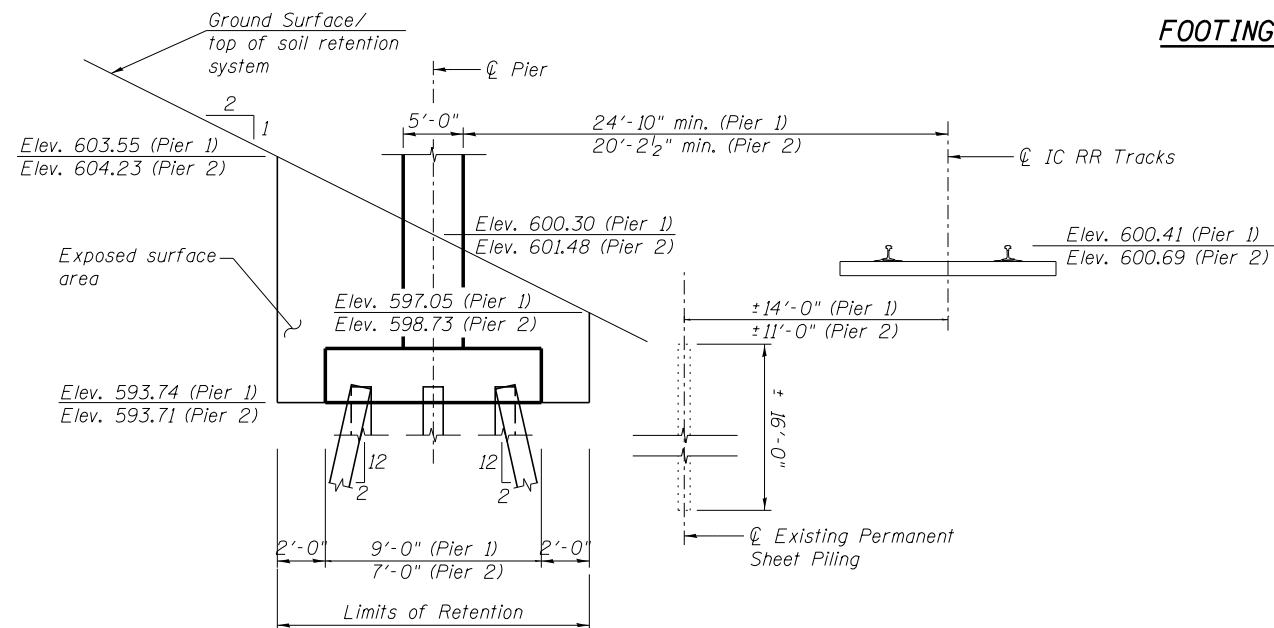


**FOOTING LAYOUT**



**TEMPORARY SOIL RETENTION SYSTEM**

Pier 1 shown, Pier 2 similar  
All dimensions perpendicular to skew unless otherwise noted.

**BILL OF MATERIAL**

ITEM	UNIT	TOTAL
Temporary Soil Retention System	Sq. Ft.	746

**NOTES:**

- For abutment details, see sheets SH24 thru SH25.
- For pier details, see sheets SH28 and SH29.
- For HP Pile Details, see sheet SH30.
- A cantilevered sheet piling design does not appear feasible and additional members or other retention systems may be necessary. The Contractor shall submit a temporary soil retention system design including plan details and calculations for review and acceptance by the Engineer.
- For Concrete Encasement Details, see Sheet SH30.

**LEGEND**

- ⊥ Indicates vertical pile
- ⊕ Indicates battered pile 12:2 (V:H)
- ⊕ Indicates Concrete Encasement

**benesch**  
engineers · scientists · planners  
Alfred Benesch & Company  
205 North Michigan Avenue, Suite 2400  
Chicago, Illinois 60601  
312-565-0450 Job No. 10093

FILE NAME =	USER NAME = jsurber	DESIGNED - CMK	REVISED -
016-0488-60J16-003-Footing Layout.dgn	PLOT SCALE =	CHECKED - JAW	REVISED -
	PLOT DATE = 12/20/2013	DRAWN - CMK	REVISED -
		CHECKED - JAW	REVISED -

**STATE OF ILLINOIS  
DEPARTMENT OF TRANSPORTATION**

**FOOTING LAYOUT  
STRUCTURE NO. 016-0488**

SHEET NO. SH3 OF SH36 SHEETS

F.A.P. RTE.	SECTION	COUNTY	TOTAL SHEETS	SHEET NO.
373	2013-038B-R	COOK	821	741
CONTRACT NO. 60J16			ILLINOIS FED. AID PROJECT	

Y:\chicago\100005\100093\Eng\_Docs\_Phase\_1\SN\_016\_0488\_0489\_1st\_Ave\_cover\_ICC.RR\Final\_0488\016-0488-60J16-003-Footing Layout.dgn 8:27:08 AM 7/16/2014