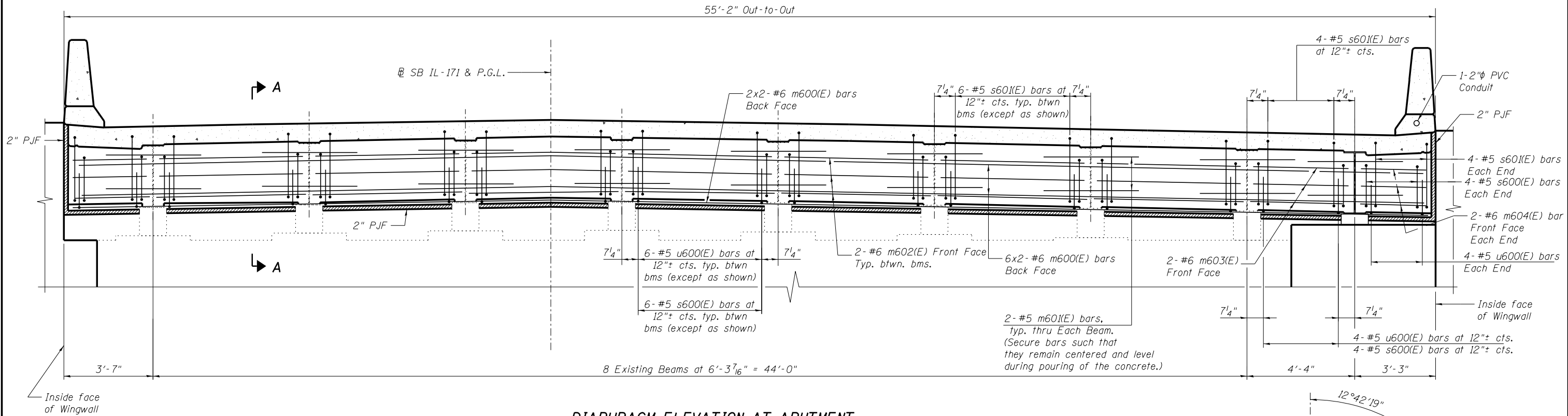
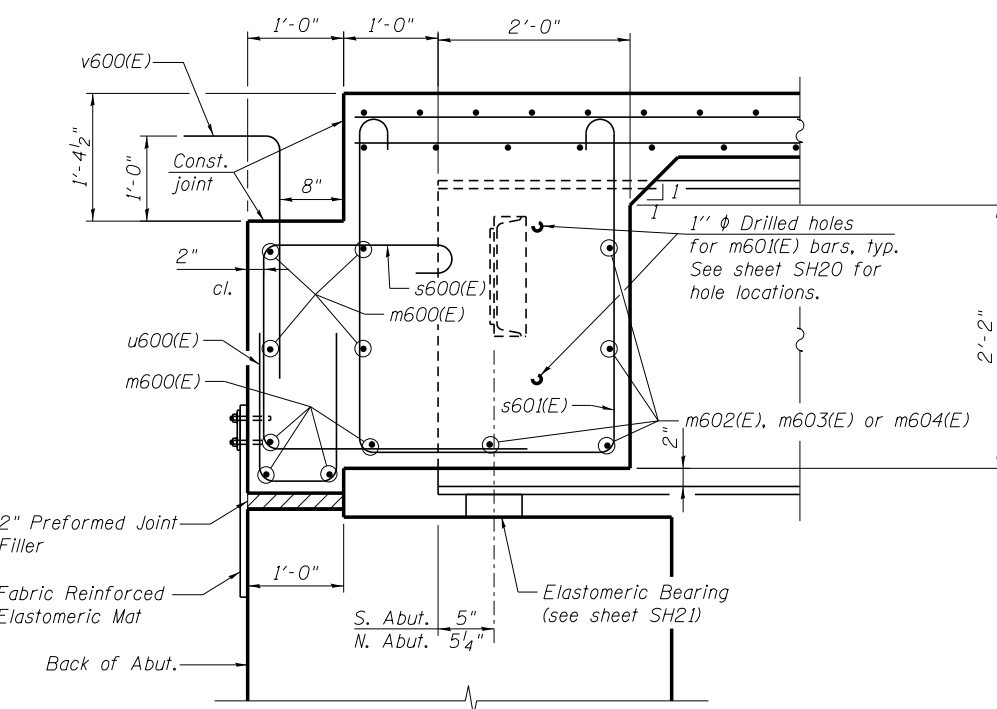


55'-2" Out-to-Out

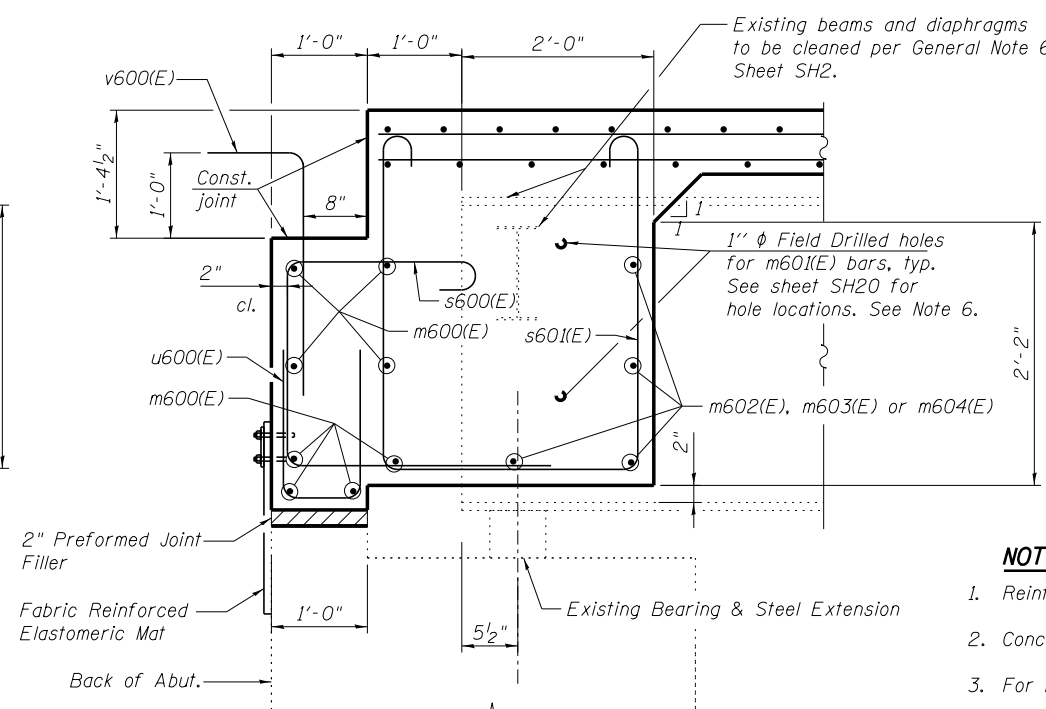


MINIMUM BAR LAP
#6 bar = 3'-0"

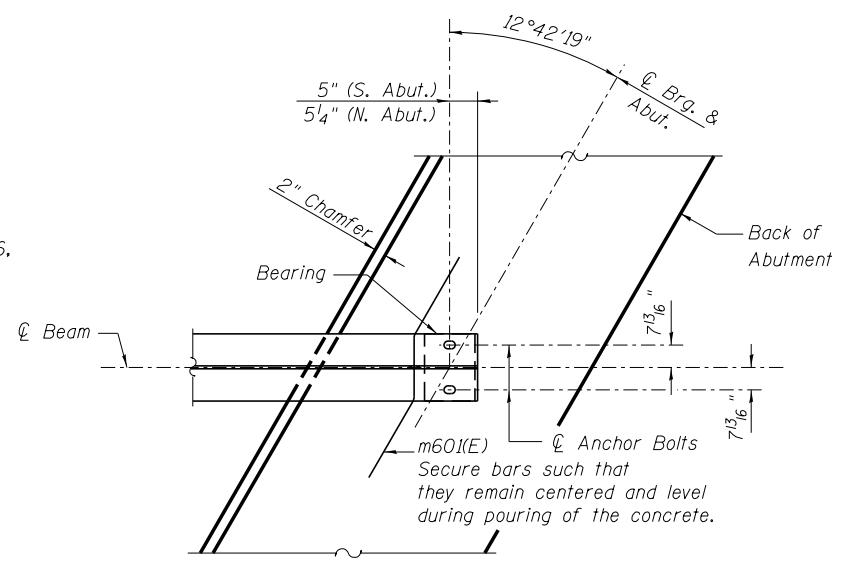
DIAPHRAGM ELEVATION AT ABUTMENT
(South Abutment shown looking Downstation)
(North Abutment - Opposite Hand)



SECTION A-A
(at abutment widening, dim. at Rt. L's except as noted)



SECTION A-A
(at existing abutment, dim. at Rt. L's except as noted)



PARTIAL PLAN AT ABUTMENT
(Showing bottom flange of beam)

NOTES:

1. Reinforcement bars in diaphragm are billed with Superstructure on sheet SH14.
2. Concrete in diaphragm is included with Concrete Superstructure on sheet SH14.
3. For bar bend details, see sheet SH14.
4. The s600(E), s601(E) and u600(E) bars shall be placed parallel to the beams. Spacing for these bars shall be at right angles to the beams.
5. For bearing details, see sheets SH21 and SH22.
6. Cost of Field Drilling included with "Furnishing and Erecting Structural Steel".

benesch
engineers · scientists · planners
Alfred Benesch & Company
205 North Michigan Avenue, Suite 2400
Chicago, Illinois 60601
312-565-0450 Job No. 10093

FILE NAME =	USER NAME = tjenicke	DESIGNED - CMK	REVISED -
		CHECKED - JAW	REVISED -
016-0488-60J16-016-Semi-Integral Abutment	Diaphragm Details.dgn	DRAWN - CMK	REVISED -
	PLOT DATE = 12/20/2013	CHECKED - JAW	REVISED -

STATE OF ILLINOIS
DEPARTMENT OF TRANSPORTATION

SEMI-INTEGRAL ABUTMENT DIAPHRAGM DETAILS
STRUCTURE NO. 016-0488

F.A.P. RTE.	SECTION	COUNTY	TOTAL SHEETS	SHEET NO.
373	2013-038B-R	COOK	821	754
CONTRACT NO. 60J16			ILLINOIS FED. AID PROJECT	

SHEET NO. SH16 OF SH36 SHEETS

X:\100005\100093\Eng_Docs_Phase_1\11\SN_016_0488-0489_1st_Ave_cover_ICC.RR\Final\Final_0488-016-016-Semi-Integral Abutment Diaphragm Details.dgn 6/23/2014 3:02:07 PM