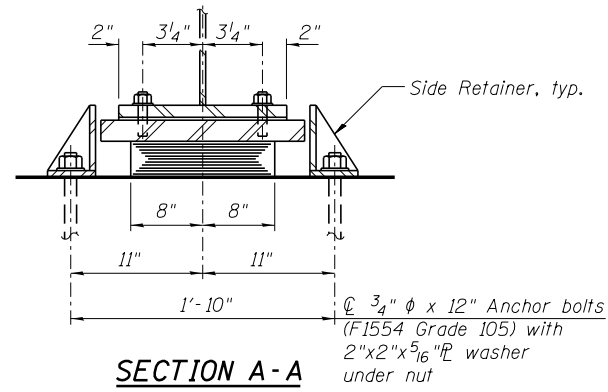
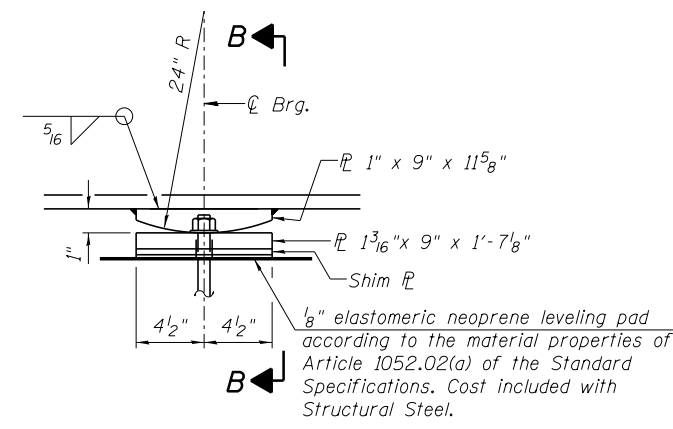


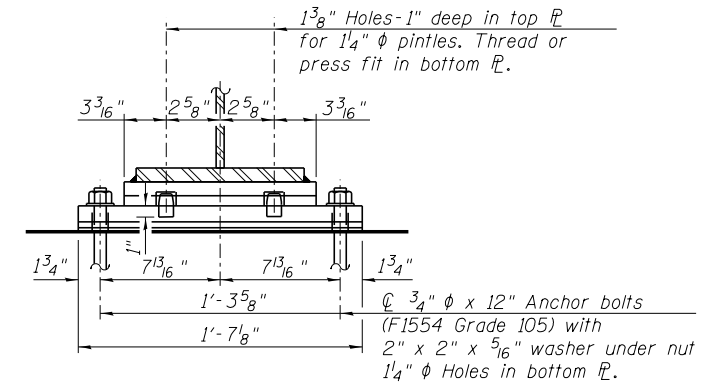
**ELEVATION**



**SECTION A-A**

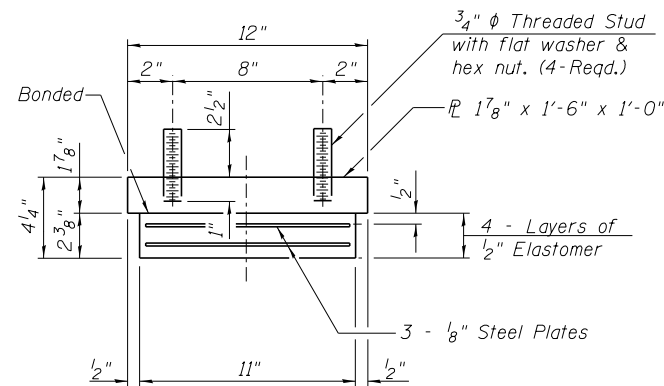


**ELEVATION AT PIER**



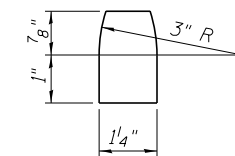
**SECTION B-B**

**TYPE I ELASTOMERIC EXP. BRG. PIER 2**



**BEARING ASSEMBLY**

Note:  
Shim plates shall not be placed under Bearing Assembly.

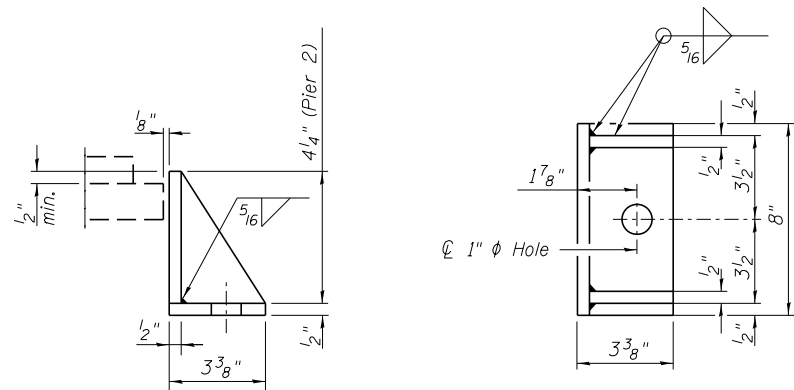


**PINTLE**

**FIXED BEARING AT PIER 1**

**NOTES:**

- Anchor bolts shall be ASTM F1554 all-thread (or an Engineer-approved alternate material) of the grade(s) and diameter(s) specified. The corresponding specified grade of AASHTO M314 anchor bolts may be used in lieu of ASTM F1554.
- Anchor bolts at fixed bearings may be either cast in place or installed in holes drilled after the supported member is in place.
- Anchor bolts for side retainers may be cast in place or installed in holes drilled before or after members are in place.
- Drilled and set anchor bolts shall be installed according to Article 521.06 of the Standard Specifications.
- Side retainers and other steel members required for the elastomeric bearing assembly shall be included in the cost of Elastomeric Bearing Assembly, Type I.
- The structural steel plates of the Bearing Assembly and fixed bearing shall conform to the requirements of AASHTO M270 Grade 50.
- Steel members required for the fixed bearing shall be included in the cost of "Furnishing and Erecting Structural Steel".
- Two 1/8" adjusting shims shall be provided for each bearing in addition to all other plates or shims and placed as shown on bearing details.



**SIDE RETAINER**

Equivalent rolled angle with stiffeners will be allowed in lieu of welded plates.

**BILL OF MATERIAL**

Item	Unit	Total
Elastomeric Bearing Assembly, Type I	Each	1
Anchor Bolts, 3/4"	Each	4

FILE NAME =	USER NAME = tjenicke	DESIGNED - CMK	REVISED -
		CHECKED - JAW	REVISED -
016-0488-60J16-022-Bearing Details 2 of 2.dgn	PLOT SCALE =	DRAWN - CMK	REVISED -
	PLOT DATE = 12/20/2013	CHECKED - JAW	REVISED -

F.A.P. RTE.	SECTION	COUNTY	TOTAL SHEETS	SHEET NO.
373	2013-0388-R	COOK	821	760
ILLINOIS FED. AID PROJECT			CONTRACT NO. 60J16	