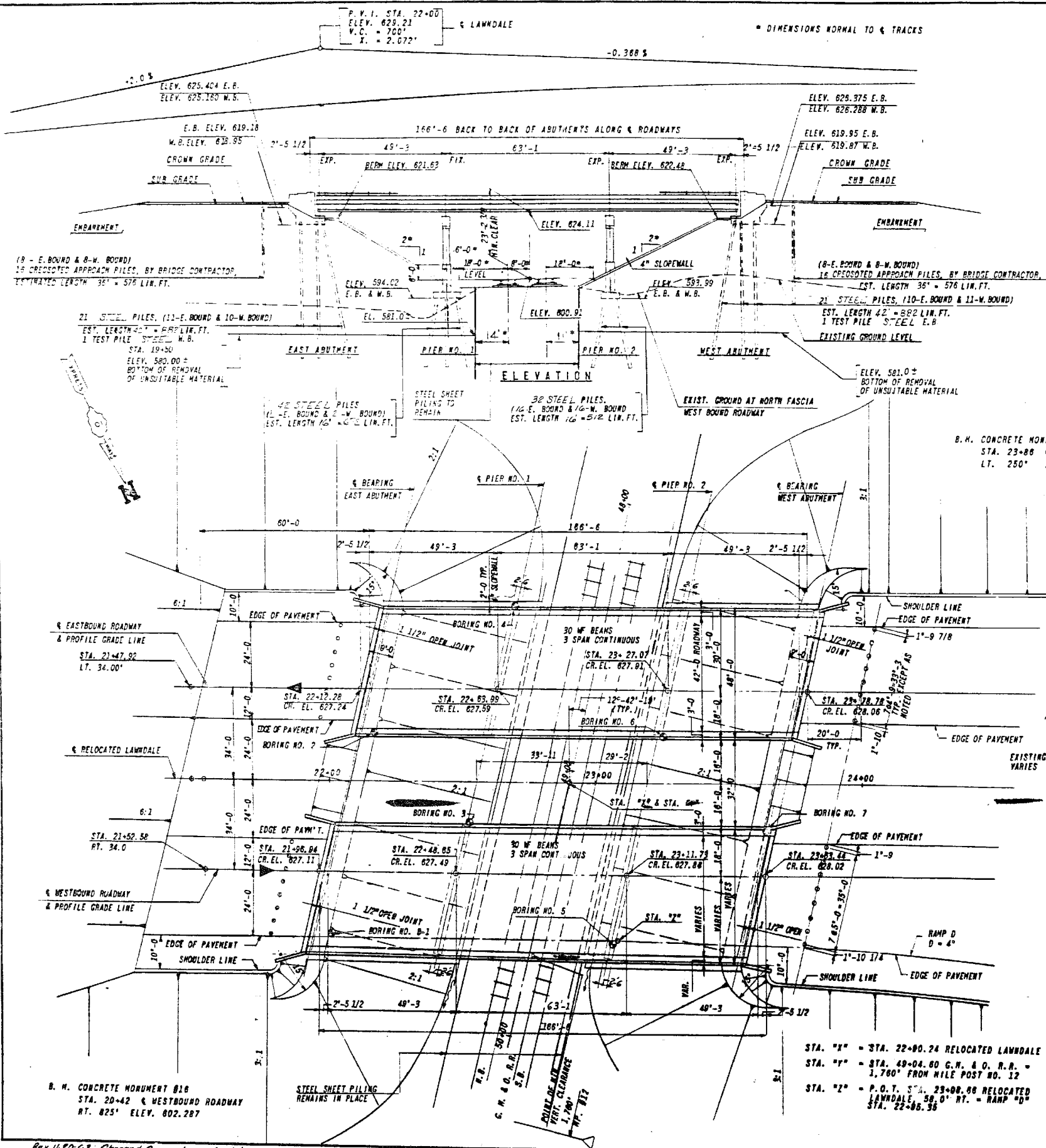
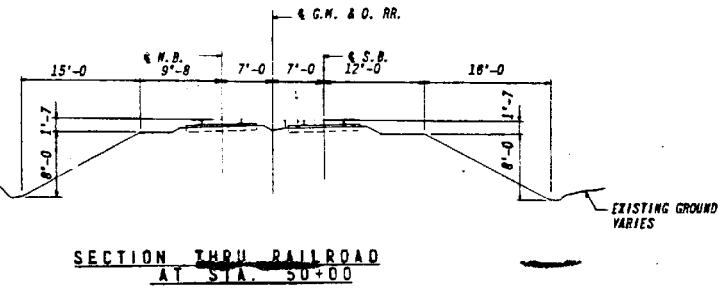
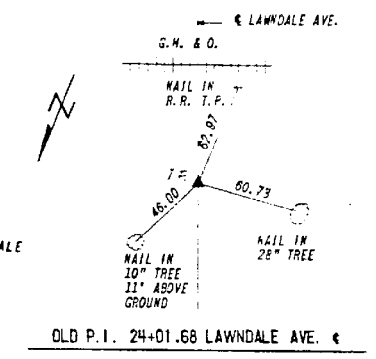
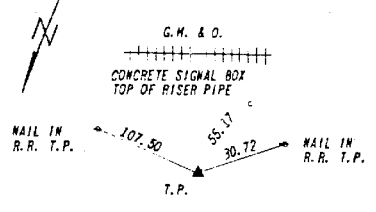


SECTION	EXPRESSWAYS	TOTAL SHEETS	SHEET NO.
133 0707-617 VB	SOUTHWEST	56	28
STA.	TO STA.		
FED. ROAD DIST. NO. 7	ILLINOIS FED. AID PROJECT - 36302		



650
640
630
620
610
600
590
580



DESIGN DATA

DESIGN SPECIFICATION: SEE NOTE BELOW
 DESIGN LOAD: H20-S16-44
 SUPERSTRUCTURE, SUBSTRUCTURE AND ABUTMENTS: STRUCTURAL STEEL.

A.S.T.M. A36 $f_s = 20,000$ psi
 REINFORCING STEEL (INTERMEDIATE AND HARD GRADE) $f_s = 20,000$ psi
 CONCRETE:
 ULTIMATE COMPRESSION $f'_c = 3,500$ psi
 ALLOWABLE COMPRESSION (WITHOUT EARTH PRESSURE) $f_c = 1,400$ psi
 ALLOWABLE COMPRESSION (WITH EARTH PRESSURE) $f_c = 1,000$ psi
 MODULAR RATIO $n = 10$
 ALLOWABLE SHEAR: BEAMS WITHOUT WEB REINFORCEMENT
 LONGITUDINAL BARS ANCHORED $u = 90$ psi
 PIER FOOTINGS $u = 75$ psi

EARTH PRESSURE:
 HORIZONTAL EARTH PRESSURE = EQUIV. FLUID PRESSURE 40 pcf

PILES:
 STEEL PILE CAPACITY (10-BP42) 37 TONS
 TIMBER PILE CAPACITY: APPROACH ROADWAY 15 TONS

MAX. ALLOWABLE LIVE LOAD DEFLECTION, NON-COMPOSITE 1/1000 SPAN

NOTE:
 DESIGN SPECIFICATIONS:
 AMERICAN ASSOCIATION OF STATE HIGHWAY OFFICIALS STANDARD SPECIFICATIONS FOR HIGHWAY BRIDGES, 8TH EDITION, DATED 1961 AND THE LATEST EDITION OF THE AMERICAN WELDING SOCIETY STANDARD SPECIFICATIONS FOR WELDED HIGHWAY AND RAILWAY BRIDGES.
 CONSTRUCTION SPECIFICATIONS:
 STANDARD SPECIFICATIONS FOR ROAD AND BRIDGE CONSTRUCTION, ILLINOIS, DEPARTMENT OF PUBLIC WORKS AND BUILDINGS, DIVISION OF HIGHWAYS, DATED APRIL 2, 1958 AND SUPPLEMENTAL SPECIFICATIONS EFFECTIVE APRIL 2, 1962.

FOR INFORMATION ONLY

REVISIONS	
NAME	DATE
DESIGNED ST.	
REVIEWED CWV	

ILLINOIS DIVISION OF HIGHWAYS.	
SOUTHWEST EXPRESSWAY	
FA. RT. 133	
LAWNDALE AVE. STRUCTURE OVER G.M. & O. RAILROAD	
SECTION 0707-617VB	
GENERAL PLAN	
SCALE: HORIZ. 1"=20'	DRAWN BY E.G.
DATE 8-21-63	CHECKED BY L.D.B.

benesch
 engineers - scientists - planners
 205 North Michigan Avenue, Suite 2400
 Chicago, Illinois 60601
 312-565-0450 Job No. 10093

FILE NAME =	USER NAME = tjenicke	DESIGNED - CMK	REVISIONS -
		CHECKED - JAW	
		DRAWN - CMK	
		CHECKED - JAW	

STATE OF ILLINOIS
 DEPARTMENT OF TRANSPORTATION

EXISTING PLAN INFORMATION (1 OF 14)
 STRUCTURE NO. 016-0488

F.A.P. RTE.	SECTION	COUNTY	TOTAL SHEETS	SHEET NO.
373	2013-0388-R	COOK	821	775
ILLINOIS FED. AID PROJECT			CONTRACT NO. 60J16	