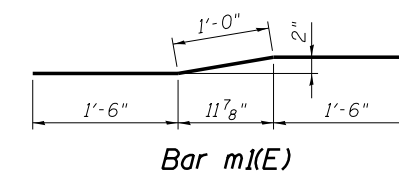
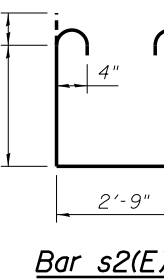
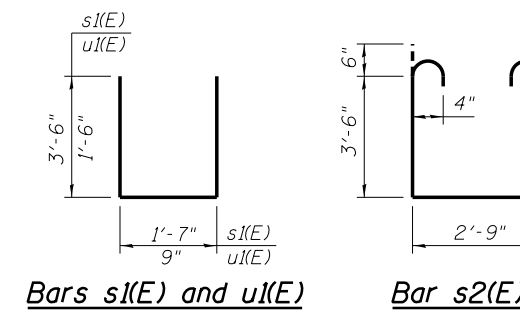
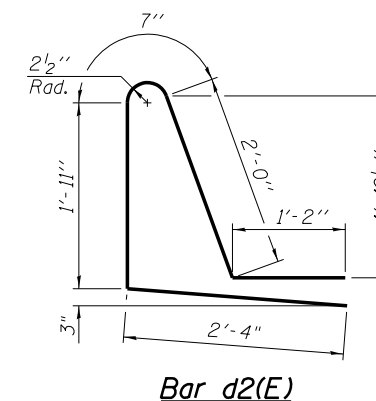
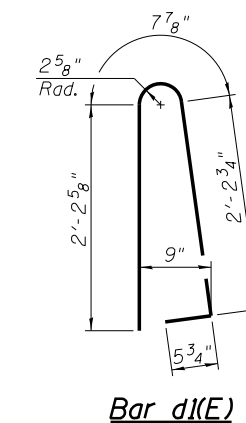
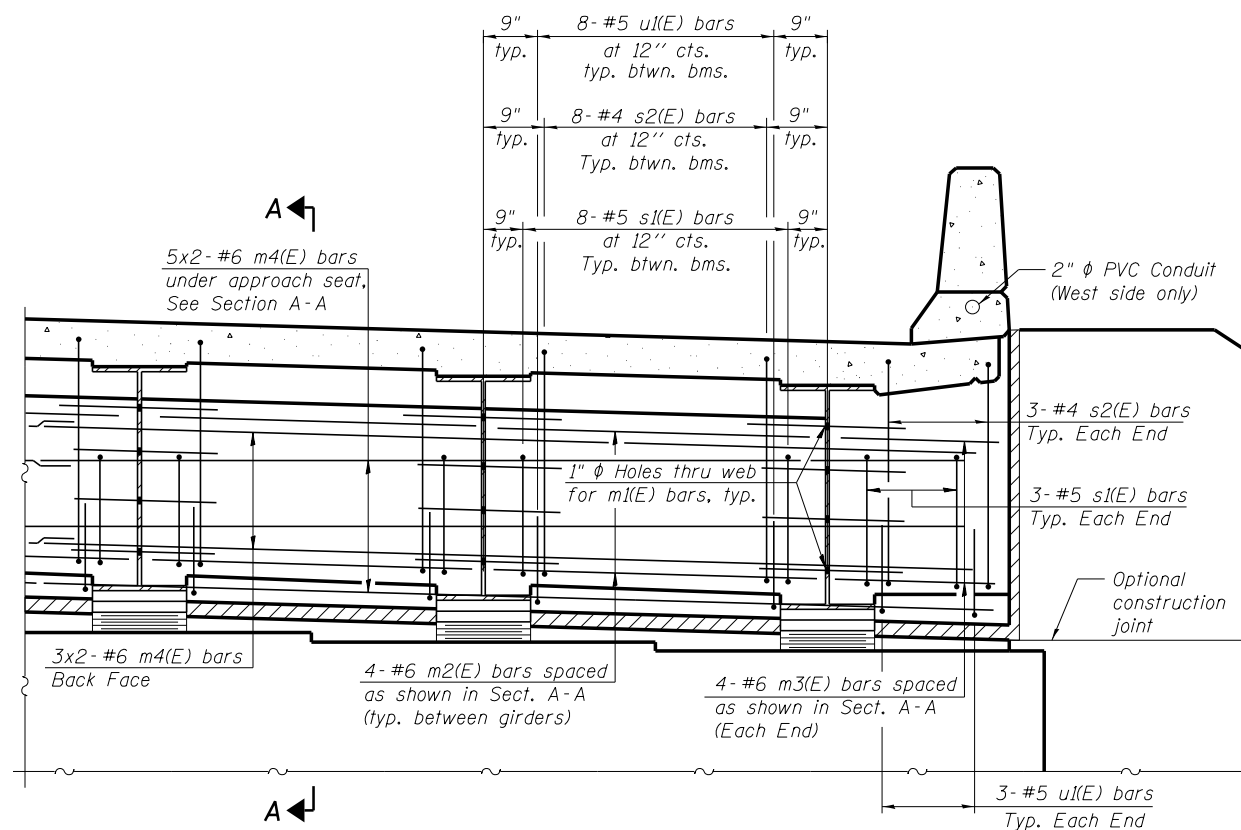
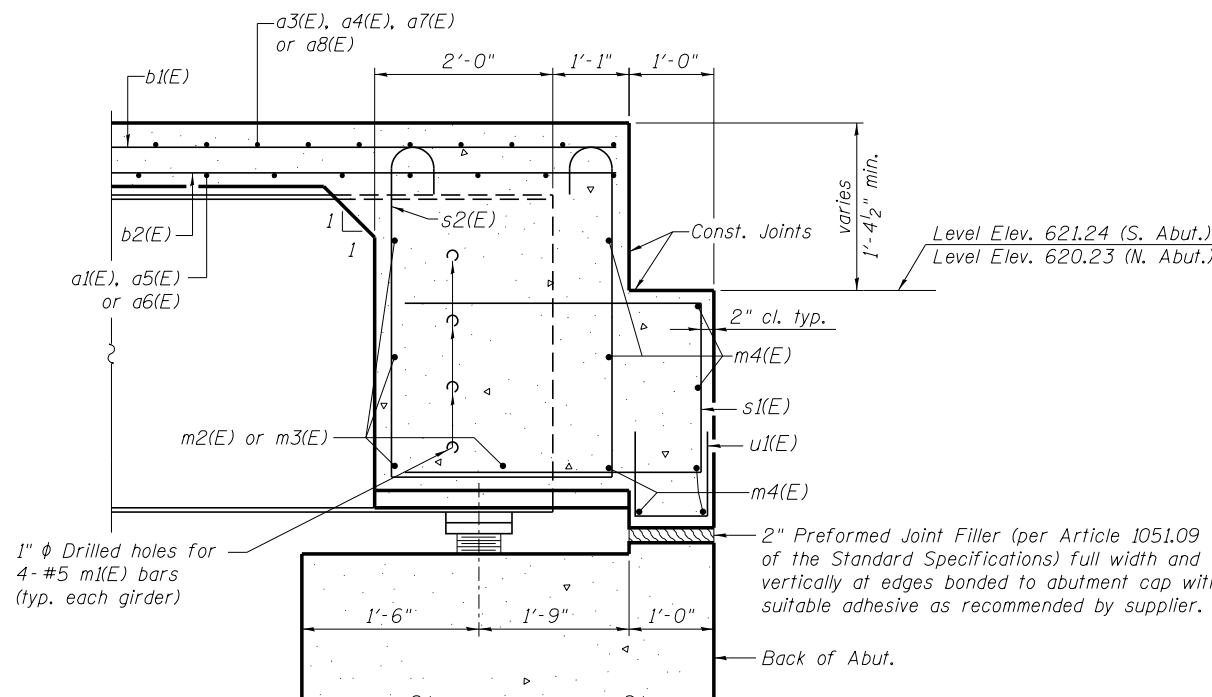
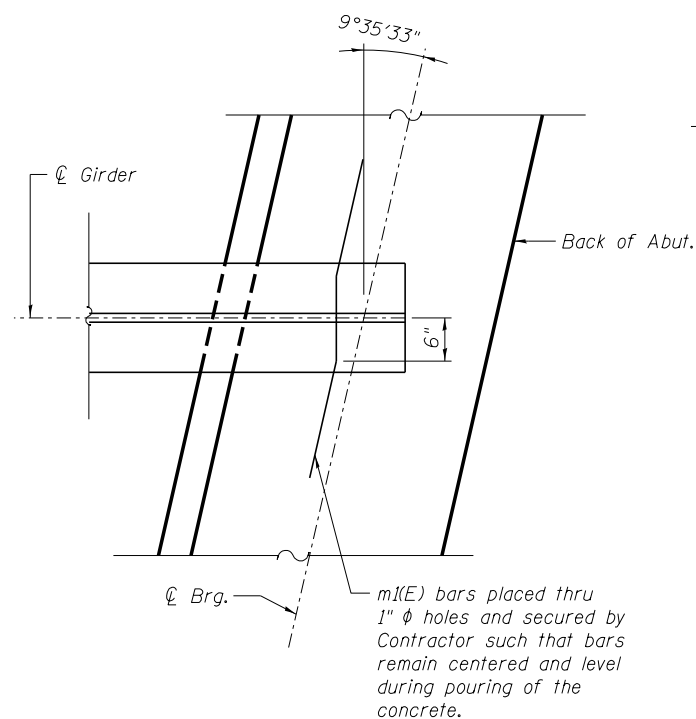


**SUPERSTRUCTURE
BILL OF MATERIAL**

Bar	No.	Size	Length	Shape
a1(E)	710	#5	30'-3"	—
a2(E)	1230	#6	6'-6"	—
a3(E)	593	#5	26'-0"	—
a4(E)	611	#5	34'-6"	—
a5(E)	6	#5	32'-2"	—
a6(E)	7	#5	31'-8"	—
a7(E)	13	#5	35'-7"	—
a8(E)	8	#5	29'-9"	—
b1(E)	549	#5	31'-6"	—
b2(E)	540	#5	28'-9"	—
b3(E)	232	#6	32'-2"	—
d1(E)	560	#5	5'-7"	⌒
d2(E)	560	#5	8'-0"	⌒
e1(E)	32	#4	15'-8"	—
e2(E)	4	#8	15'-8"	—
e3(E)	56	#4	19'-2"	—
e4(E)	6	#4	27'-4"	—
e5(E)	6	#8	29'-5"	—
e6(E)	42	#4	15'-2"	—
e7(E)	4	#4	24'-2"	—
e8(E)	4	#8	25'-9"	—
e9(E)	56	#4	17'-8"	—
e10(E)	6	#4	25'-4"	—
e11(E)	6	#8	27'-5"	—
e12(E)	32	#4	13'-2"	—
e13(E)	4	#8	13'-2"	—
m1(E)	56	#5	4'-0"	⌒
m2(E)	48	#6	8'-3"	—
m3(E)	16	#6	3'-0"	—
m4(E)	32	#6	30'-11"	—
s1(E)	108	#5	8'-7"	⌒
s2(E)	108	#4	10'-9"	⌒
u1(E)	108	#5	3'-9"	⌒
Concrete Superstructure		Cu. Yd.	504.9	
Reinforcement Bars, Epoxy Coated		Pound	135,760	



MIN. BAR LAP
#6 bar = 3'-4"



SECTION A-A
Dimensions at right angles to abutment, except as shown.

- NOTES:**
- Concrete in diaphragm is included with Concrete Superstructure.
 - The s1(E) and s2(E) bars shall be placed parallel to the beams. Spacing for these bars shall be at right angles to the beams.

benesch
engineers · scientists · planners
Alfred Benesch & Company
205 North Michigan Avenue, Suite 2400
Chicago, Illinois 60601
312-565-0450 Job No. 10093

FILE NAME =	USER NAME = ksnyder	DESIGNED - DMS	REVISED -
0161510.60W77.015_Sup_Details.dgn		CHECKED - KWS	REVISED -
	PLOT SCALE =	DRAWN - KMS	REVISED -
	PLOT DATE = 6/23/2014	CHECKED - KWS	REVISED -

**STATE OF ILLINOIS
DEPARTMENT OF TRANSPORTATION**

**SUPERSTRUCTURE DETAILS
STRUCTURE NO. 016-1510**
SHEET NO. SA15 OF SA43 SHEETS

F.A.P. RTE.	SECTION	COUNTY	TOTAL SHEETS	SHEET NO.
373	(0707-608&611)HB-B	COOK	177	80
				CONTRACT NO. 60W77
ILLINOIS FED. AID PROJECT				