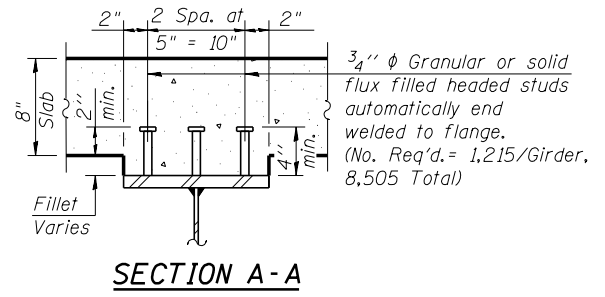
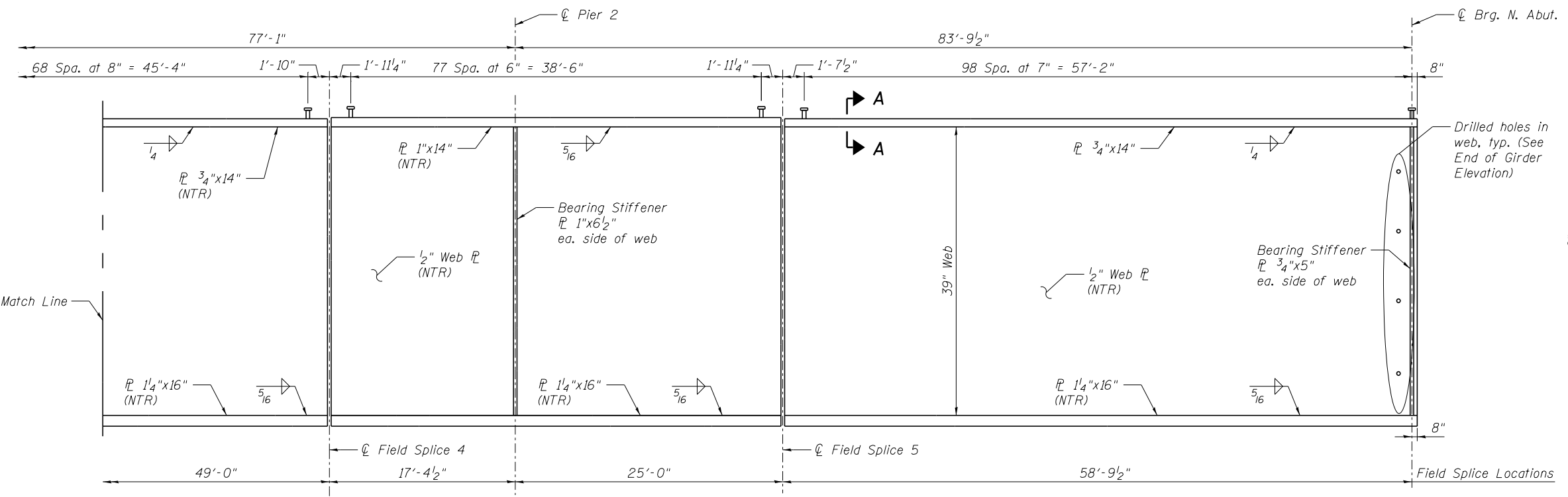


GIRDER ELEVATION
 "NTR" denotes plates to which notch toughness requirements are applicable.



GIRDER ELEVATION
 "NTR" denotes plates to which notch toughness requirements are applicable.

- NOTES:**
- All flange plates, web plates and bearing stiffeners shall be AASHTO M270 Grade 50 steel.
 - Load carrying components designated "NTR" shall conform to the Impact Testing Requirements, Zone 2.

benesch
 engineers - scientists - planners
 Alfred Benesch & Company
 205 North Michigan Avenue, Suite 2400
 Chicago, Illinois 60601
 312-565-0450 Job No. 10093

FILE NAME =	USER NAME = ksnlder	DESIGNED - DMS	REVISED -
0161510.60W77.026.Girder.Elev.dgn		CHECKED - KWS	REVISED -
	PLOT SCALE =	DRAWN - KMS	REVISED -
	PLOT DATE = 6/23/2014	CHECKED - KWS	REVISED -

STATE OF ILLINOIS
DEPARTMENT OF TRANSPORTATION

GIRDER ELEVATION
STRUCTURE NO. 016-1510

SHEET NO. SA26 OF SA43 SHEETS

F.A.P. RTE.	SECTION	COUNTY	TOTAL SHEETS	SHEET NO.
373	(0707-608&611)HB-B	COOK	177	91
CONTRACT NO. 60W77				
ILLINOIS FED. AID PROJECT				

X:\100000S\10093\Eng-Docs\Phase-11\SN-016-1510-1511-1st_Ave_cover-155\Final\0161510-60W77-026-Girder_Elev.dgn
 10:56:01 AM
 6/23/2014