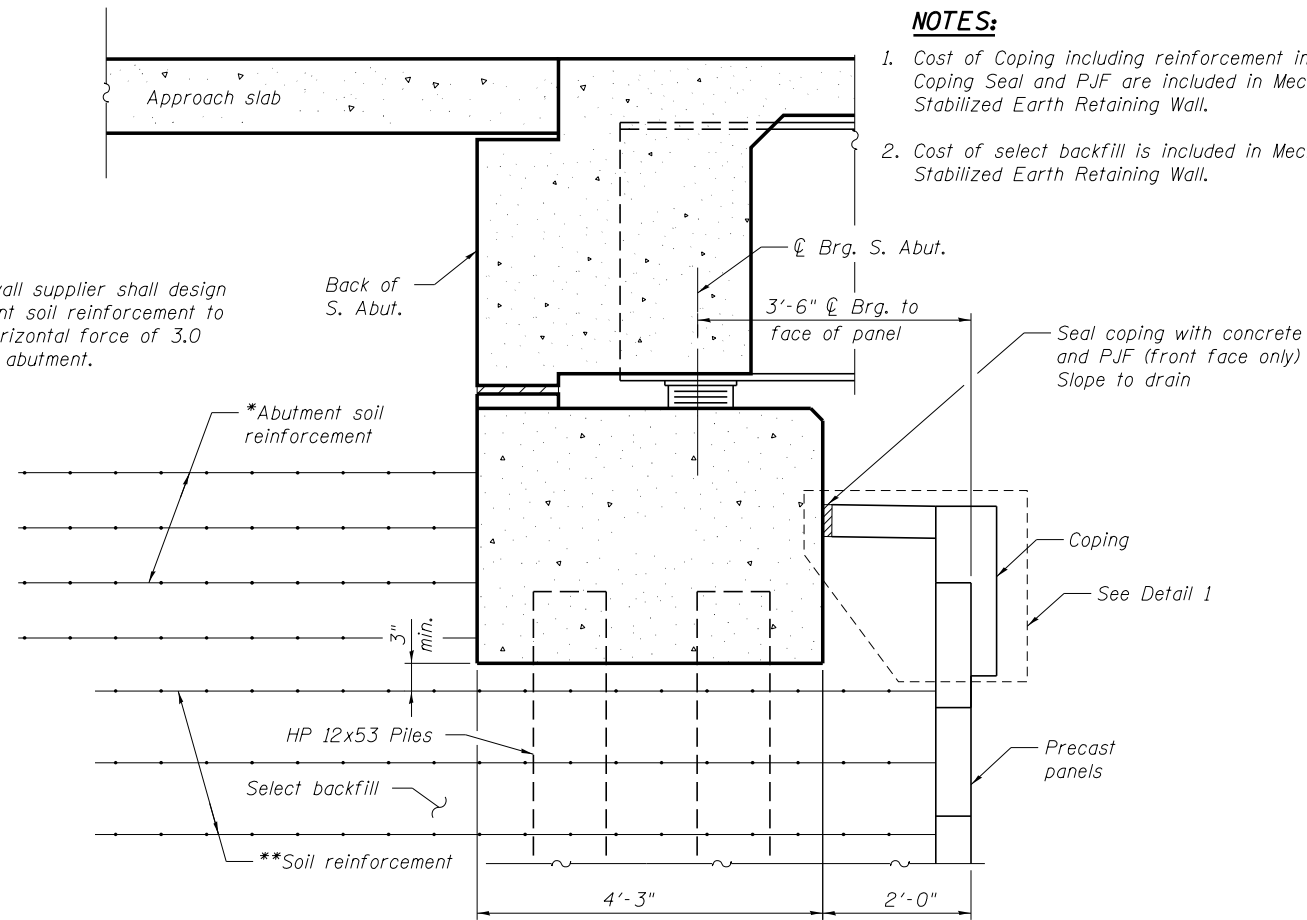
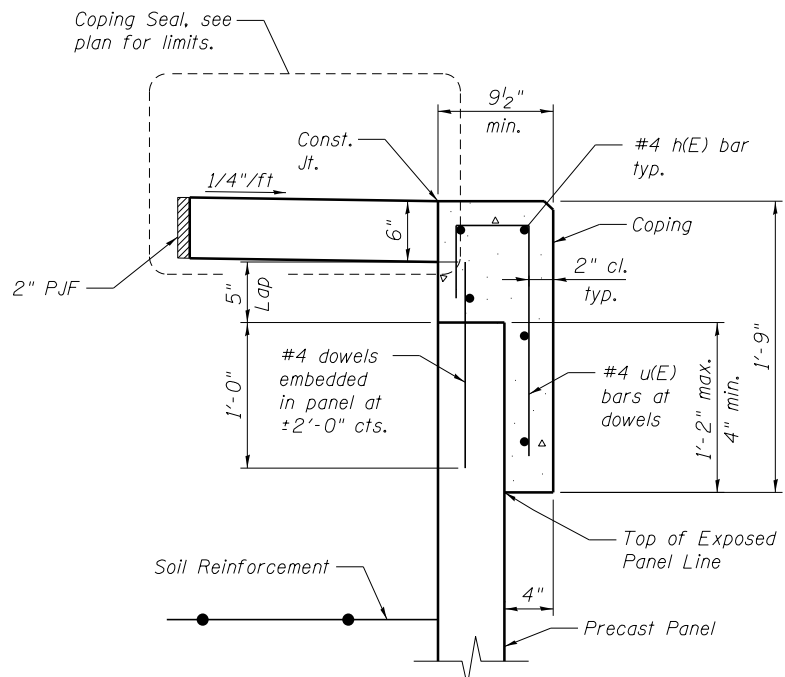


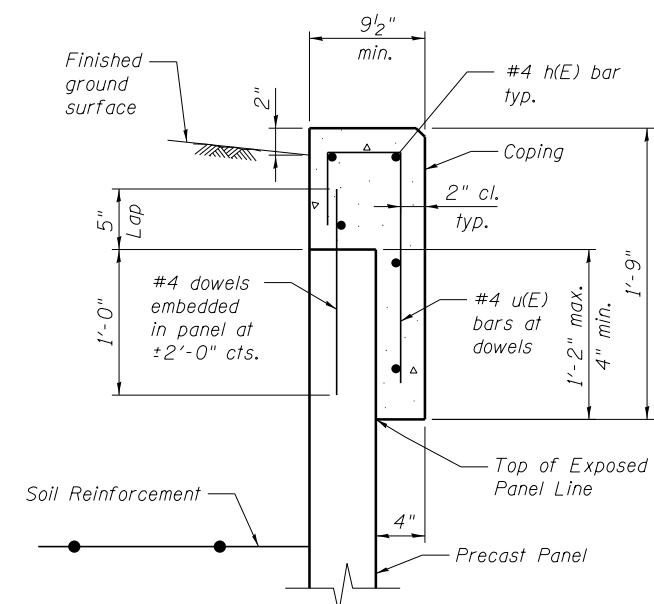
* The MSE wall supplier shall design the abutment soil reinforcement to resist a horizontal force of 3.0 kips/ft. of abutment.



SECTION THRU SOUTH ABUTMENT
(Horiz. Dim. @ Rt. L's)



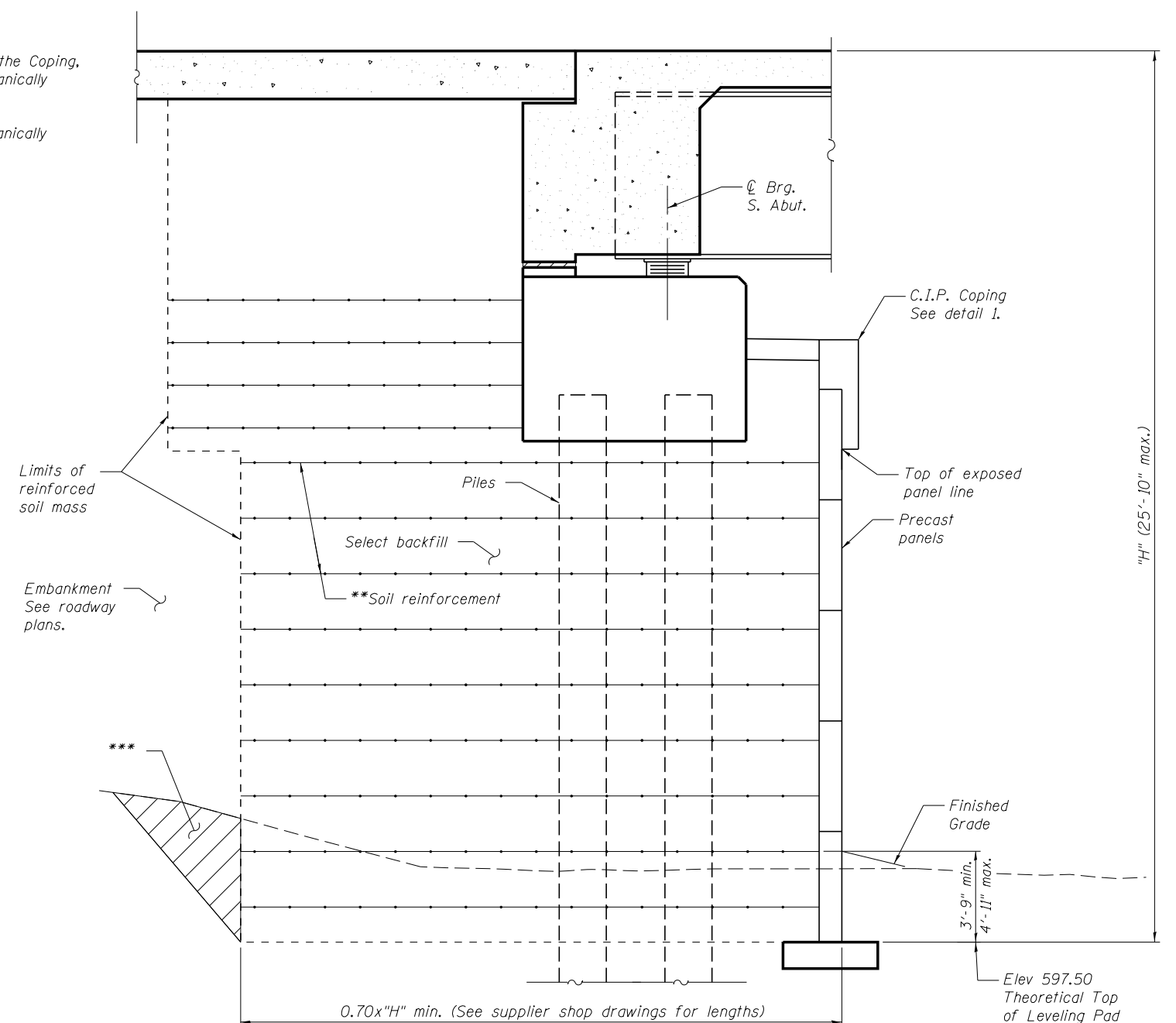
DETAIL 1
(Typical in front of S. Abut.)



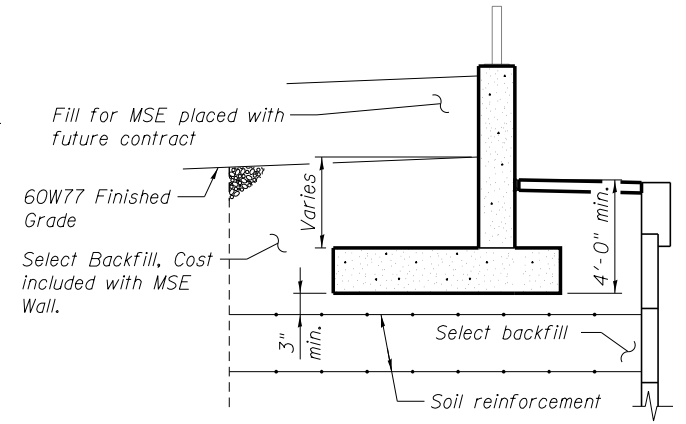
SECTION A-A

MINIMUM BAR LAP
(Coping)
#4 h(E) bar = 2'-0"

- NOTES:**
1. Cost of Coping including reinforcement in the Coping, Coping Seal and PJF are included in Mechanically Stabilized Earth Retaining Wall.
 2. Cost of select backfill is included in Mechanically Stabilized Earth Retaining Wall.



TYPICAL MSE WALL SECTION AT SOUTH ABUTMENT
(Horiz. Dim. @ Rt. L's)



SECTION THRU RETAINING WALL AT SOUTH ABUTMENT

- ** Cutting or bending of soil reinforcement beyond approved manufacturer's limits to miss piles is not permitted. Connecting soil reinforcement to piles or wrapping around piles is also not permitted. Special detailing and provisions for accommodating pile conflicts shall be included in the Submittals for Mechanically Stabilized Earth Retaining Walls.
- *** Overexcavation beyond structure excavation. This area not measured for payment. Backfill overexcavation with same material used for select fill used in MSE wall.

benesch
engineers - scientists - planners
Alfred Benesch & Company
205 North Michigan Avenue, Suite 2400
Chicago, Illinois 60601
312-565-0450 Job No. 10093

FILE NAME =	USER NAME = ksnider	DESIGNED - SLV	REVISED -
0161510.60W77.033.S.Abnt.MSE.Dtls.dgn		CHECKED - KWS	REVISED -
		DRAWN - SLV	REVISED -
		CHECKED - KWS	REVISED -

STATE OF ILLINOIS
DEPARTMENT OF TRANSPORTATION

SOUTH ABUTMENT MSE WALL DETAILS
STRUCTURE NO. 016-1510
SHEET NO. SA33 OF SA43 SHEETS

F.A.P. RTE.	SECTION	COUNTY	TOTAL SHEETS	SHEET NO.
373	(0707-608&611)HB-B	COOK	177	98
CONTRACT NO. 60W77			ILLINOIS FED. AID PROJECT	

X:\100000S\10093\Eng-Docs\Phase-11\SN-016-1510-1511-1st_Ave_cover-155\Final\1510-Final\0161510-60W77-033-S.Abnt.MSE.Dtls.dgn 10:57:13 AM 6/23/2014