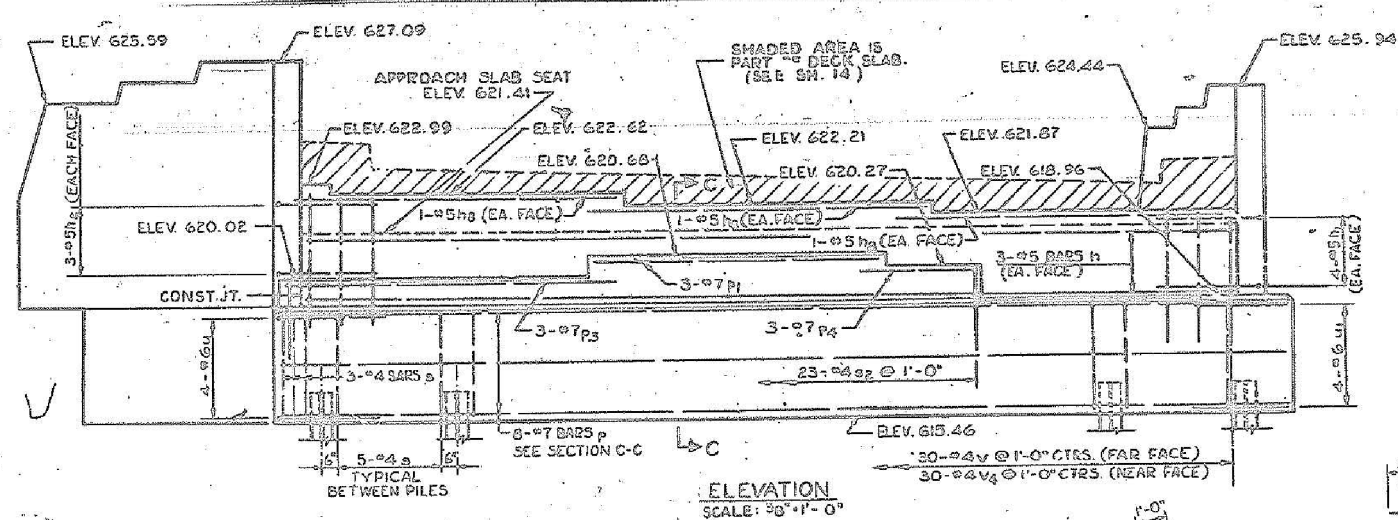
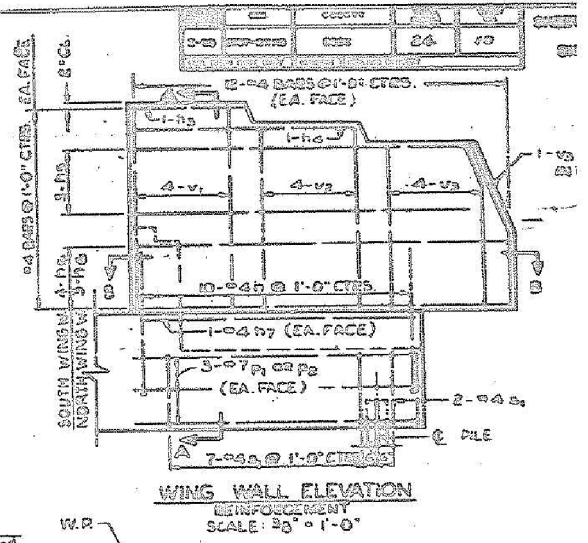


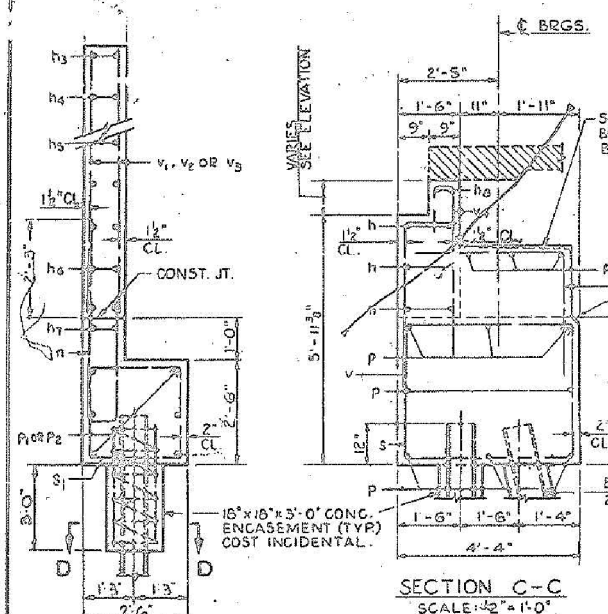
WING WALL ELEVATION



ELEVATION
SCALE: 3/8" = 1'-0"

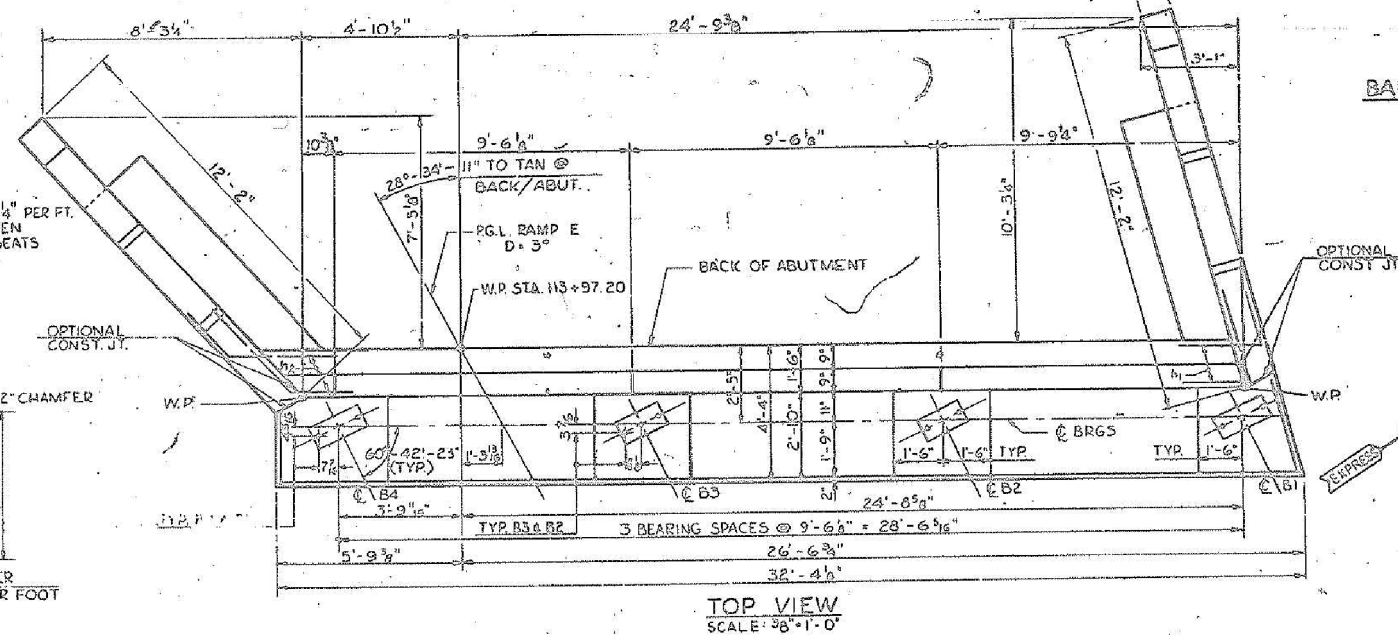


WING WALL ELEVATION
REINFORCEMENT
SCALE: 3/8" = 1'-0"

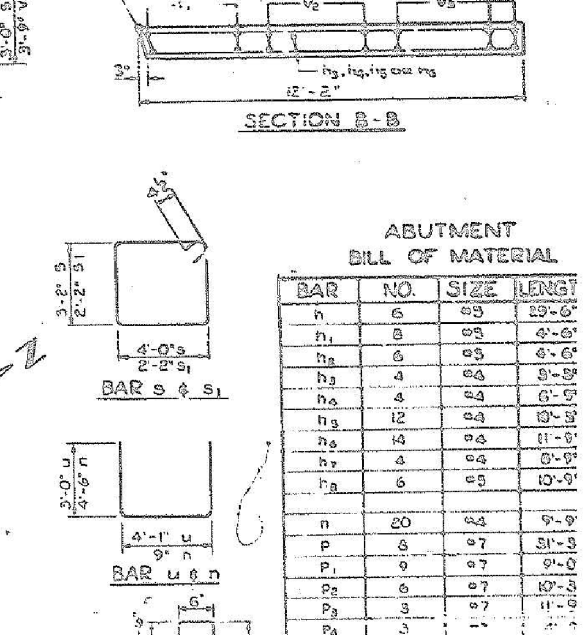


SECTION A-A

SECTION C-C
SCALE: 1/2" = 1'-0"



TOP VIEW
SCALE: 3/8" = 1'-0"

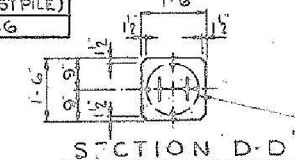


SECTION B-B

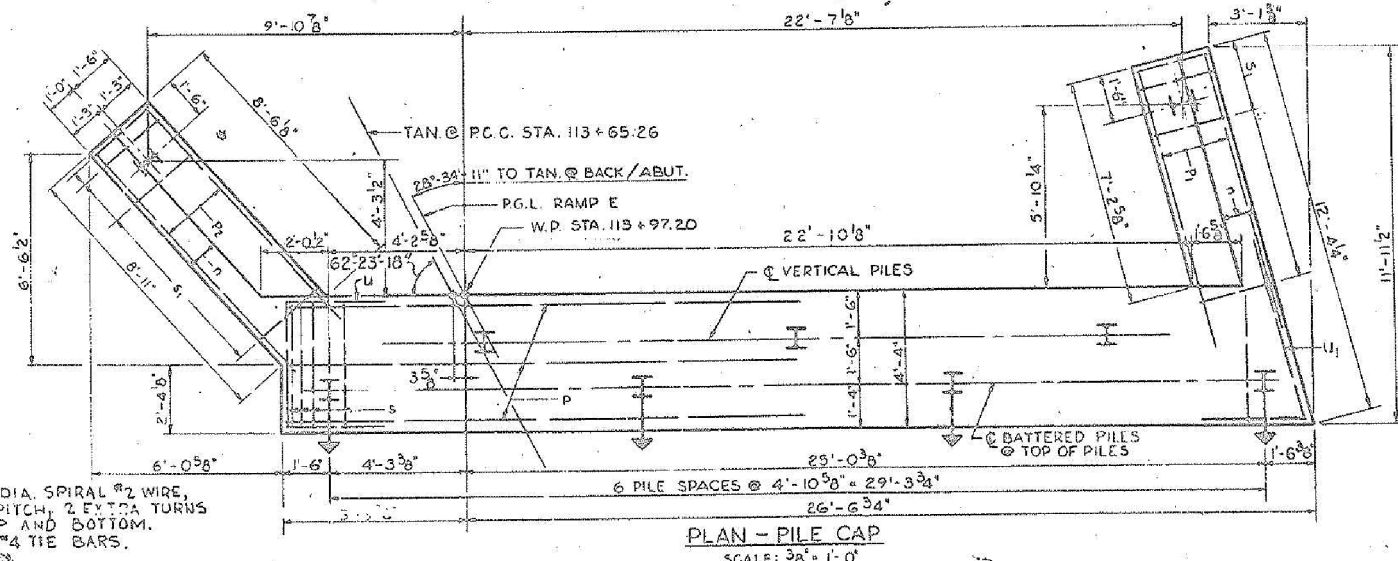
NOTES: ALL ANCHOR BOLTS TO PROJECT 3" ABOVE FINISHED CONCRETE.
ALL BAR DIMENSIONS ARE OUT TO OUT.
PREFIX ALL BAR MARKS FOR SHIPMENT WITH THE LETTER W. EXAMPLE: W# MEANS BARS IN FOR WEST ABUTMENT.
FOR WORK POINTS, SEE LOCATION PLAN SH.13.
FOR SLEEVES IN ABUTMENT BACKWALL, SEE SH.20.

PILE DATA	
TYPE	BSP36
CAPACITY	25 TON
REF. LENGTH	38 FEET
NO. REQ'D.	9 (INCL TEST PILE)
CUTOFF ELEV.	616.46

DE LAY, CATHY & CO. ENGINEERS
DESIGNED BY: V.K. CHURKOVIC
DRAWN BY: J. ALLEN
CHECKED: J. ALLEN
IN CHARGE: R.S. MORTON
APPROVED: L.B. BISH



SECTION D-D



PLAN - PILE CAP
SCALE: 3/8" = 1'-0"

ABUTMENT
BILL OF MATERIAL

BAR	NO.	SIZE	LENGTH
h	6	#5	29'-0"
h1	8	#5	4'-6"
h2	6	#5	4'-6"
h3	4	#4	9'-0"
h4	4	#4	0'-0"
h5	12	#4	10'-0"
h6	14	#4	11'-0"
h7	4	#4	0'-0"
h8	6	#5	10'-0"
n	20	#4	9'-0"
p	8	#7	31'-0"
p1	9	#7	0'-0"
p2	6	#7	10'-0"
p3	5	#7	11'-0"
p4	5	#7	11'-0"
s	35	#4	15'-1"
s1	18	#4	0'-0"
s2	23	#4	0'-0"
u	4	#6	10'-1"
u1	4	#6	8'-0"
v	20	#4	5'-0"
v1	16	#4	6'-1"
v2	16	#4	5'-1"
v3	20	#4	5'-1"
v4	20	#4	7'-1"
CLASS X CONCRETE CU.V			
PROTECTIVE COAT SQ.V			
REINFORCEMENT BARS LB.			
FURNISHING STEEL PILES LIN.F			
TEST PILES STEEL EAU			
DRIVING STEEL PILES LIN.F			
CLASS A EXCAV FOR STRUCTS CU.V			

ILLINOIS DIVISION OF HIGHWAYS
SOUTHWEST EXPRES
RAMP 'E' OVER
SOUTHWEST EXPRES
WEST ABUTMENT
SCALE AS NOTED



Alfred Benesch & Company
205 North Michigan Avenue, Suite 2400
Chicago, Illinois 60601
312-565-0450 Job No. 10093

FILE NAME = 0161512.60W77.045_Existing Plans.2.dgn	USER NAME = ksnyder	DESIGNED - DMS	REVISED -
PLOT SCALE =	DRAWN - KMS	CHECKED - JHG	REVISED -
PLOT DATE = 6/23/2014	CHECKED - JHG	DRAWN - KMS	REVISED -

STATE OF ILLINOIS
DEPARTMENT OF TRANSPORTATION

EXISTING PLANS (2 OF 7)
STRUCTURE NO. 016-1512
SHEET NO. SB2 OF SB7 SHEETS

FOR INFORMATION ONLY

F.A.P. RTE. 373	SECTION (0707-608&611)HB-B	COUNTY COOK	TOTAL SHEETS 177	SHEET NO. 161
CONTRACT NO. 60W77				ILLINOIS FED. AID PROJECT