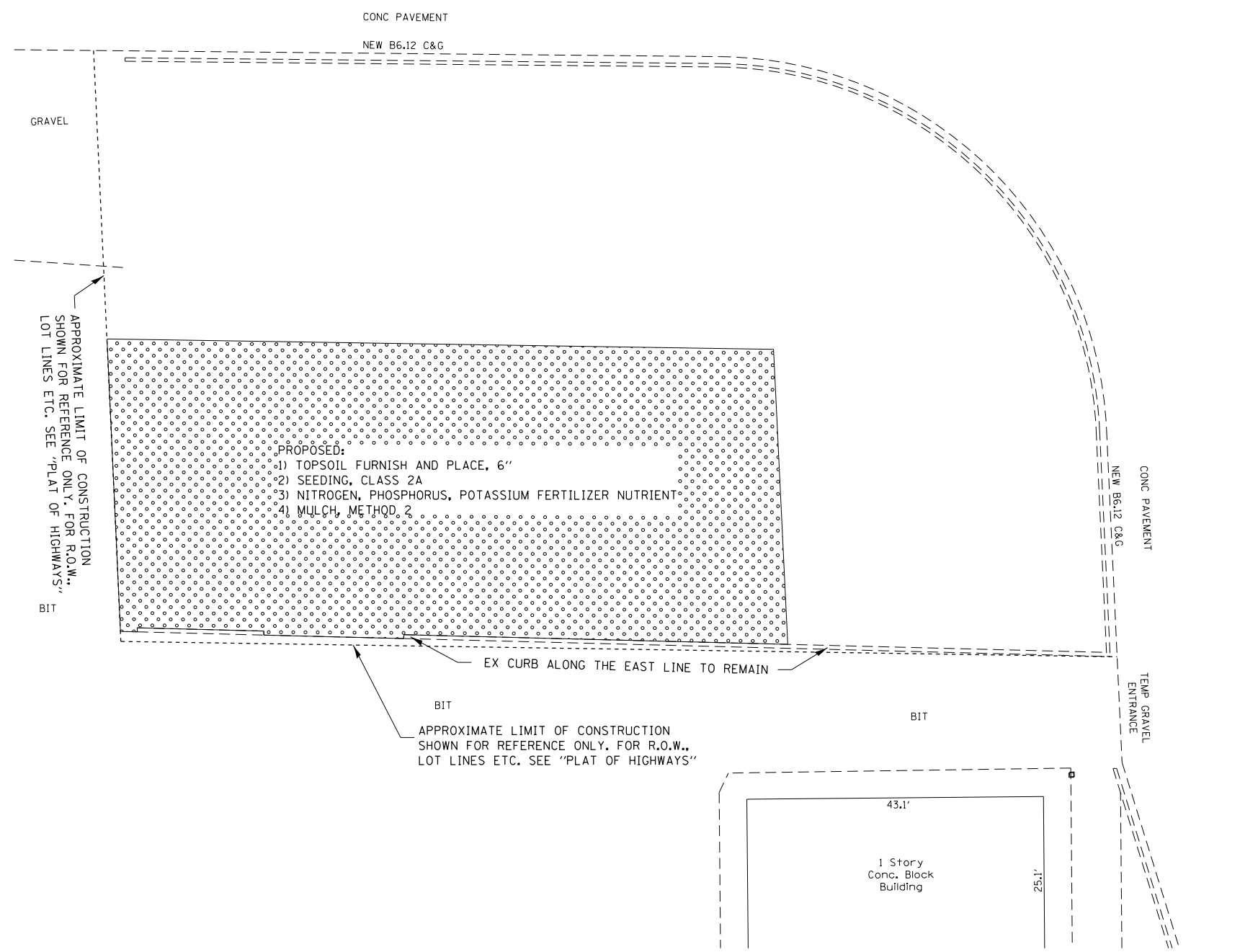


81 McLEAN BLVD 82 83

200+00
LILLIAN ST
1201



- PROPOSED:
- 1) TOPSOIL FURNISH AND PLACE, 6"
 - 2) SEEDING, CLASS 2A
 - 3) NITROGEN, PHOSPHORUS, POTASSIUM FERTILIZER NUTRIENT
 - 4) MULCH, METHOD 2

APPROXIMATE LIMIT OF CONSTRUCTION SHOWN FOR REFERENCE ONLY. FOR R.O.W., LOT LINES ETC. SEE "PLAT OF HIGHWAYS"

APPROXIMATE LIMIT OF CONSTRUCTION SHOWN FOR REFERENCE ONLY. FOR R.O.W., LOT LINES ETC. SEE "PLAT OF HIGHWAYS"

FILE NAME =	USER NAME = Velichkovv	DESIGNED -	REVISED -
et:\pw\work\pilot\velichkovv\d0400762\141814-sht-plan.dgn	141814-sht-plan.dgn	DRAWN -	REVISED -
Default	PLOT SCALE = 20.0000' / in.	CHECKED -	REVISED -
	PLOT DATE = 8/6/2014	DATE -	REVISED -

STATE OF ILLINOIS
DEPARTMENT OF TRANSPORTATION

US 20 (LAKE ST) over McLEAN BLVD (McLEAN & LILLIAN ST)
LANDSCAPING & EROSION CONTROL

F.A.P. RTE.	SECTION	COUNTY	TOTAL SHEETS	SHEET NO.
345	(8R&R)DM	KANE	7	5
CONTRACT NO. 60Y51				
ILLINOIS FED. AID PROJECT				

SCALE: SHEET OF SHEETS STA. TO STA.