

STATE OF ILLINOIS
DEPARTMENT OF TRANSPORTATION
DIVISION OF HIGHWAYS
PROPOSED
HIGHWAY PLANS

F.A.I. RTE.	SECTION	COUNTY	TOTAL SHEETS	SHEET NO.
55	(99-1HB-1A)	WILL	*33	1
FED. ROAD DIST. NO.	ILLINOIS	CONTRACT NO.	60Y53	

*35 + 1 = 36 D-91-421-14 *33 + 2 = 35

FOR INDEX OF SHEETS, SEE SHEET NO. 2

IMPROVEMENTS LOCATED IN THE VILLAGE OF
 BOLINGBROOK AND ROMEOVILLE, WILL COUNTY

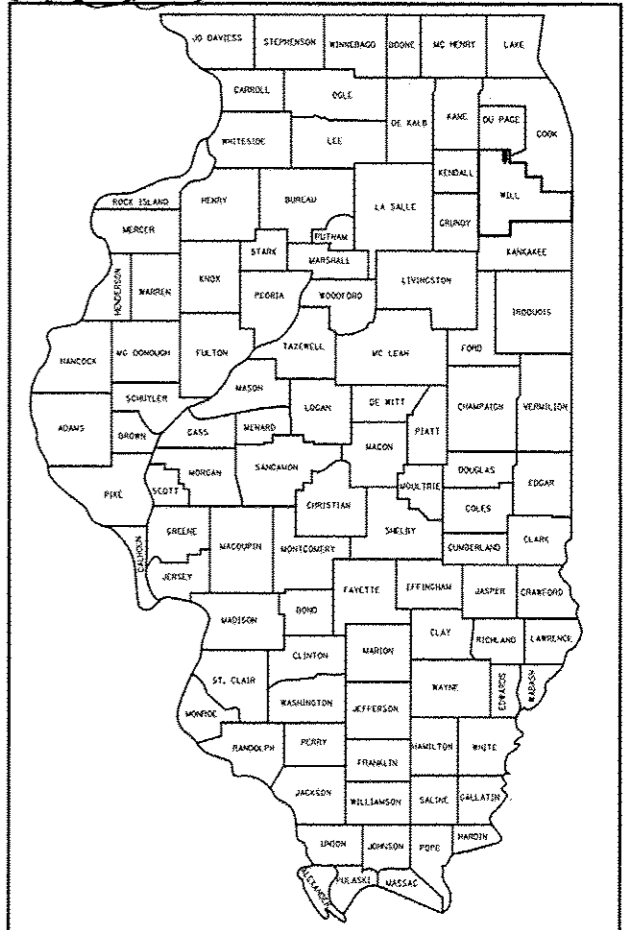
DESIGN DESIGNATION

INTERSTATE

TRAFFIC DATA

	ADT 2010/2040	SPEED DESIGN/POSTED
INTERSTATE 55		
IL 53 TO WEBER RD	136,400/146,000	70/65
WEBER RD TO IL 126	106,000/128,000	70/65
WEBER RD		
RODEO DR TO I-55	34,900/38,000	45/45
I-55 TO 135TH ST	40,300/49,000	45/45
RAMP B	17,000/17,000	45/40
RAMP D	7,300/8,000	45/40

F.A.I. ROUTE 55 (I-55)
AT WEBER ROAD
SECTION (99-1HB-1)A
ADVANCED EMBANKMENT CONTRACT
FOR RAMPS B AND D
WILL COUNTY
C-91-421-14



LOCATION OF SECTION INDICATED THUS: —■—



By: *Patrick J. O'Brien* DATE: 07/11/2014
 EXPIRES: 11/30/2015
 CONSULTANT: KNIGHT E/A, INC.

STATE OF ILLINOIS
 DEPARTMENT OF TRANSPORTATION
 DIVISION OF HIGHWAYS

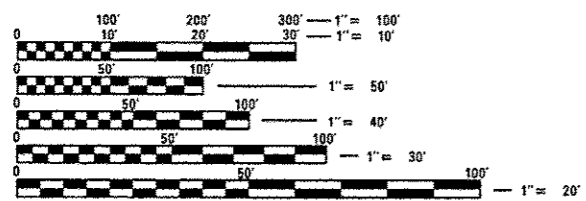
SUBMITTED *July 14 20 14*

John F. ...
 DEPUTY DIRECTOR OF HIGHWAYS, REGION ENGINEER

Aug 15 20 14
John D. Baranzolli, P.E.
 ENGINEER OF DESIGN AND ENVIRONMENT

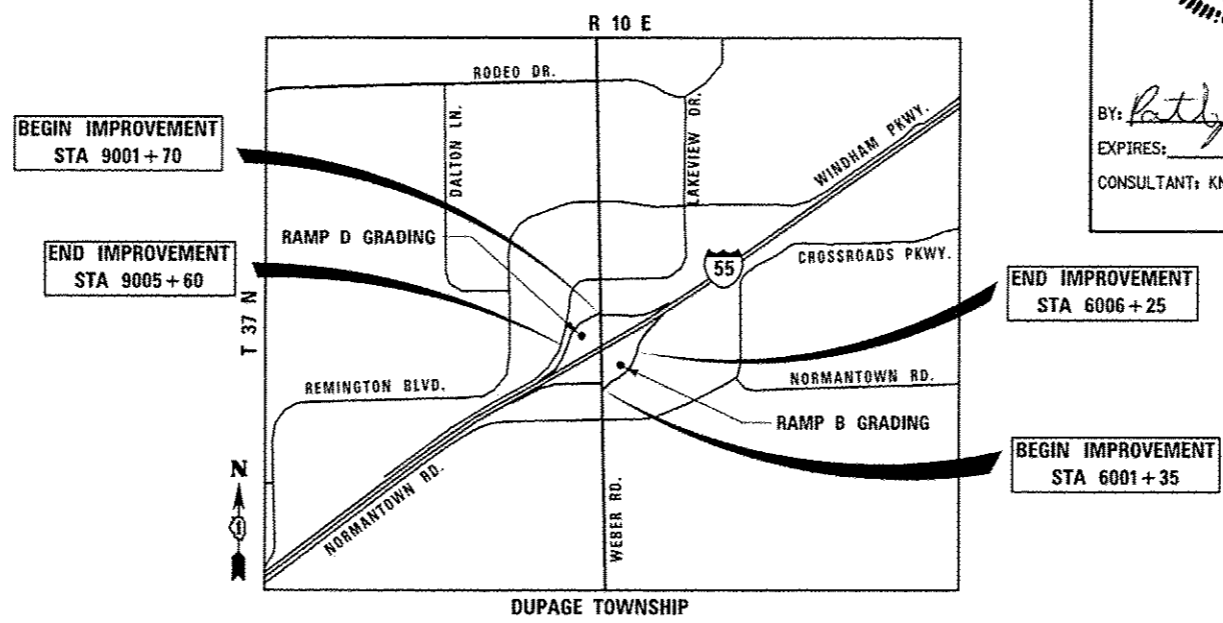
Aug 15 20 14
Orter Osman, P.E.
 DIRECTOR OF HIGHWAYS, CHIEF ENGINEER

**PRINTED BY THE AUTHORITY
 OF THE STATE OF ILLINOIS**



FULL SIZE PLANS HAVE BEEN PREPARED USING STANDARD ENGINEERING SCALES. REDUCED SIZED PLANS WILL NOT CONFORM TO STANDARD SCALES. IN MAKING MEASUREMENTS ON REDUCED PLANS, THE ABOVE SCALES MAY BE USED.

J.U.L.I.E.
 JOINT UTILITY LOCATION INFORMATION FOR EXCAVATION
 1-800-892-0123
 OR 811



LOCATION MAP

NET LENGTH OF PROJECT = 880 FEET = 0.17 MILES
 GROSS LENGTH OF PROJECT = 880 FEET = 0.17 MILES

PROJECT MANAGER – LONG TRAN (847) 705-4232
 PROJECT ENGINEER – CRAIG BAUER (847) 705-4265

CONTRACT NO. 60Y53

Plans Prepared By:
KNIGHT
 Engineers & Architects

221 North LaSalle Street
 Suite 300
 Chicago, IL 60601-1211
 Phone: (312) 577-3300

Rev. 9-4-14

D:\60Y53-sht-01-cover.dgn

INDEX OF SHEETS

<u>SHEET</u>	<u>DESCRIPTION</u>
1	TITLE SHEET
2	INDEX OF SHEETS AND HIGHWAY STANDARDS
3	GENERAL NOTES
4	SUMMARY OF QUANTITIES
5-6	TYPICAL SECTIONS
7-9	SCHEDULE OF QUANTITIES
10-13	ALIGNMENT, BENCHMARK AND TIES
14	MAINTENANCE OF TRAFFIC GENERAL NOTES AND TYPICAL SECTIONS
15-16	MAINTENANCE OF TRAFFIC PLANS
17-18	REMOVAL PLANS
19-20	GRADING & DRAINAGE PLANS
21-22	SOIL BORING LOGS
23	EROSION CONTROL LEGEND AND GENERAL NOTES
24-25	EROSION CONTROL PLANS
26	TRAFFIC CONTROL AND PROTECTION FOR SIDE ROADS, INTERSECTIONS, AND DRIVEWAYS (TC-10)
⚠ * 27	TRAFFIC CONTROL DETAILS FOR FREEWAY SHOULDER CLOSURES AND PARTIAL RAMP CLOSURES (TC-17)
28-30	CROSS SECTIONS - RAMP B
31-33	CROSS SECTIONS - RAMP D
33A-33B	LANDSCAPE PLANS
⚠ * 27A.	FREEWAY EXPRESSWAY SIGNING FOR FLAGGING OPERATIONS

IDOT HIGHWAY STANDARDS

<u>STANDARD NO.</u>	<u>TITLE</u>
000001-06	STANDARD SYMBOLS, ABBREVIATIONS AND PATTERNS
001006	DECIMAL OF AN INCH AND OF A FOOT
280001-07	TEMPORARY EROSION CONTROL SYSTEMS
701001-02	OFF-RD OPERATIONS, 2L, 2W, MORE THAN 15' (4.5M) AWAY
701006-05	OFF-RD OPERATIONS, 2L, 2W, 15' (4.5M) TO 24" (600MM) FROM PAVEMENT EDGE
701901-03	TRAFFIC CONTROL DEVICES
720006-04	SIGN PANEL ERECTION DETAILS

⚠ 701101-04

FILE NAME: C:\G053\p1-02-index and highway standards.dwg

⚠ Rev. 9-4-14

USER NAME: jmba@idot	DESIGNED: PAW	REVISED: -	STATE OF ILLINOIS DEPARTMENT OF TRANSPORTATION	INDEX OF SHEETS AND HIGHWAY STANDARDS		F.A.I. RTE.	SECTION	COUNTY	TOTAL SHEETS	SHEET NO.		
DRAWN: PAW	CHECKED: PJO	REVISED: -		SCALE: NONE	SHEET NO. 1 OF 1 SHEETS	STA.	TO STA.	55	(99-1NB-11A)	WILL	33	2
PLOT SCALE: 1/2"=200'	DATE: 7/31/2014	REVISED: -		CONTRACT NO. 60Y53								
PLOT DATE: 7/31/2014	DATE: 7/31/2014	REVISED: -		ILLINOIS FED. AID PROJECT								

GENERAL NOTES

1. BEFORE STARTING ANY EXCAVATION, THE CONTRACTOR SHALL CALL "J.U.L.I.E." AT 800-892-0123 OR 811 FOR FIELD LOCATIONS, BURIED ELECTRIC LINES, TELEPHONE AND GAS FACILITIES. (48 HOUR NOTIFICATION IS REQUIRED)
2. THE CONTRACTOR SHALL COORDINATE CONSTRUCTION ACTIVITIES WITH UTILITY COMPANIES, TO HAVE THE LOCATION OF EXISTING UTILITIES STAKED AT LEAST FORTY-EIGHT (48) HOURS PRIOR TO EXCAVATION. THE CONTRACTOR SHALL NOTIFY THE VILLAGE OF BOLINGBROOK AND THE VILLAGE OF ROMEOVILLE, AT LEAST SEVENTY-TWO (72) HOURS PRIOR TO EXCAVATION.
3. THERE ARE EXISTING IDOT LIGHTING FACILITIES AND IDOT SURVEILLANCE FACILITIES LOCATED WITHIN THE LIMITS OF THIS CONTRACT THAT MUST REMAIN FUNCTIONING AT ALL TIMES. THESE FACILITIES ARE NOT INCLUDED IN THE J.U.L.I.E. SYSTEM. THE CONTRACTOR SHALL COORDINATE WITH THE ENGINEER A MINIMUM OF 10 DAYS PRIOR TO START OF WORK FOR THESE FACILITIES TO BE FIELD LOCATED.
4. THE CONTRACTOR WILL NOT BE ALLOWED TO SET UP A YARD OR FIELD OFFICE ON STATE PROPERTY WITHOUT WRITTEN PERMISSION FROM THE DEPARTMENT.
5. WHERE SECTION OR SUBSECTION MONUMENTS ARE ENCOUNTERED, THE ENGINEER SHALL BE NOTIFIED BEFORE SUCH MONUMENTS ARE REMOVED. THE CONTRACTOR SHALL CAREFULLY PRESERVE ALL PROPERTY MARKERS AND MONUMENTS UNTIL THE OWNER, AN AUTHORIZED SURVEYOR OR AGENT HAS WITNESSED OR OTHERWISE REFERENCED EACH LOCATION.
6. THE CONTRACTOR SHALL BE RESPONSIBLE FOR DETERMINING THE LOCATIONS OF ALL UTILITIES FROM THE UTILITY COMPANIES AND BY FIELD INSPECTIONS.
7. ALL EXCAVATED MATERIAL ALONG WITH UNSUITABLE EXCAVATED MATERIAL SHALL BE STOCKPILED ON-SITE. NO MATERIAL IS TO BE REMOVED FROM THE JOBSITE. STOCKPILE LOCATIONS ARE TO BE DETERMINED BY THE ENGINEER.
8. THE CONTRACTOR SHALL TAKE CARE IN REMOVING OR EXCAVATING NEAR ALL EXISTING ITEMS WHICH WILL REMAIN. ANY DAMAGE DONE TO EXISTING ITEMS BY THE CONTRACTOR SHALL BE REPAIRED AT THE CONTRACTOR'S EXPENSE.
9. THE CONTRACTOR SHALL OBTAIN ALL NECESSARY PERMITS, AS REQUIRED, PRIOR TO COMMENCING WITH CONSTRUCTION.
10. POLLUTION CONTROL: THE CONTRACTOR SHALL BE REQUIRED TO COMPLY WITH STATE REGULATIONS REGARDING AIR, WATER AND NOISE POLLUTION.
11. THE CONTRACTOR IS RESPONSIBLE FOR MAINTAINING DRAINAGE THROUGHOUT THE CONSTRUCTION OF THIS PROJECT.
12. THE CONTRACTOR SHALL CONTACT THE IDOT ROADSIDE DEVELOPMENT UNIT AT (847) 705-4171 72 HOURS PRIOR TO TRANSPLANTING TO LAYOUT LOCATIONS WITHIN THE INTERCHANGE NOT SUBJECT TO FUTURE IMPACTS FROM CONSTRUCTION.
13. THE CONTRACTOR SHALL CONTACT THE DISTRICT ONE TRAFFIC CONTROL SUPERVISOR AT (847) 705-4470 A MINIMUM OF 72 HOURS IN ADVANCE OF BEGINNING WORK.
14. NO WORK SHALL COMMENCE UNTIL TRAFFIC CONTROL REQUIREMENTS ARE MET.
15. DURING CONSTRUCTION OPERATIONS, WHENEVER LOOSE MATERIAL IS DEPOSITED IN THE FLOW LINE OF GUTTERS, DRAINAGE STRUCTURES, DITCHES, ETC., SUCH THAT THE NATURAL FLOW LINE OF WATER IS OBSTRUCTED, THE LOOSE MATERIAL SHALL BE REMOVED AT THE CLOSE OF EACH WORKING DAY. AT THE CONCLUSION OF THE CONSTRUCTION OPERATIONS, ALL DRAINAGE STRUCTURES AND FLOW LINES SHALL BE FREE FROM DIRT AND DEBRIS. THE CONTRACTORS FAILURE TO PROVIDE THE ABOVE WILL PRECLUDE ANY POSSIBLE ADDED COMPENSATION REQUESTED DUE TO DELAYS OR UNSUITABLE MATERIAL CREATED AS A RESULT THERE OF.

FILE NAME = D:\82753\int-03-General Notes.dgn

Rev. 9-4-14

USER NAME = moastro	DESIGNED PAW	REVISED -	STATE OF ILLINOIS DEPARTMENT OF TRANSPORTATION	GENERAL NOTES			F.A.I. RTE.	SECTION	COUNTY	TOTAL SHEETS	SHEET NO.
	DRAWN PAW	REVISED -		55	(99-1HB-11A)	WILL	33	3			
PLOT SCALE = 1:2,000.00	CHECKED PJO	REVISED -		CONTRACT NO. 60Y53			ILLINOIS FED. AID PROJECT				
PLOT DATE = 7/31/2014	DATE 7/31/2014	REVISED -		SCALE: NONE	SHEET NO. 1 OF 1 SHEETS	STA.	TO STA.				

2015 09 21

				ROADWAY URBAN
CODE NO.	ITEM DESCRIPTION	UNIT	TOTAL QUANTITY	0004 100% STATE
20100110	TREE REMOVAL (6 TO 15 UNITS DIAMETER)	UNIT	111	111
20101000	TEMPORARY FENCE	FOOT	120	120
20400800	FURNISHED EXCAVATION	CU YD	10790	10790
* 21101505	TOPSOIL EXCAVATION AND PLACEMENT	CU YD	2100	2100
25100630	EROSION CONTROL BLANKET	SQ YD	13154	13154
28000250	TEMPORARY EROSION CONTROL SEEDING	POUND	272	272
28000305	TEMPORARY DITCH CHECKS	FOOT	250	250
28000400	PERIMETER EROSION BARRIER	FOOT	1789	1789
28100109	STONE RIPRAP, CLASS A5	SQ YD	94	94
28200200	FILTER FABRIC	SQ YD	94	94
67100100	MOBILIZATION	L SUM	1	1
* K0026610	TRANSPLANTED SALVAGED TREES	EACH	22	22
Z0013797	STABILIZED CONSTRUCTION ENTRANCE	SQ YD	400	400
* K0029626	WEED CONTROL, TEASEL	POUND	0.25	0.25
Z0013798	CONSTRUCTION LAYOUT	L SUM	1	1
X2010310	TREE REMOVAL (SPECIAL)	UNIT	210	210
X7010216	TRAFFIC CONTROL AND PROTECTION, (SPECIAL)	L SUM	1	1
19 X7011015	TRAFFIC CONTROL AND PROTECTION (EXPRESSWAYS)	L SUM	1	1

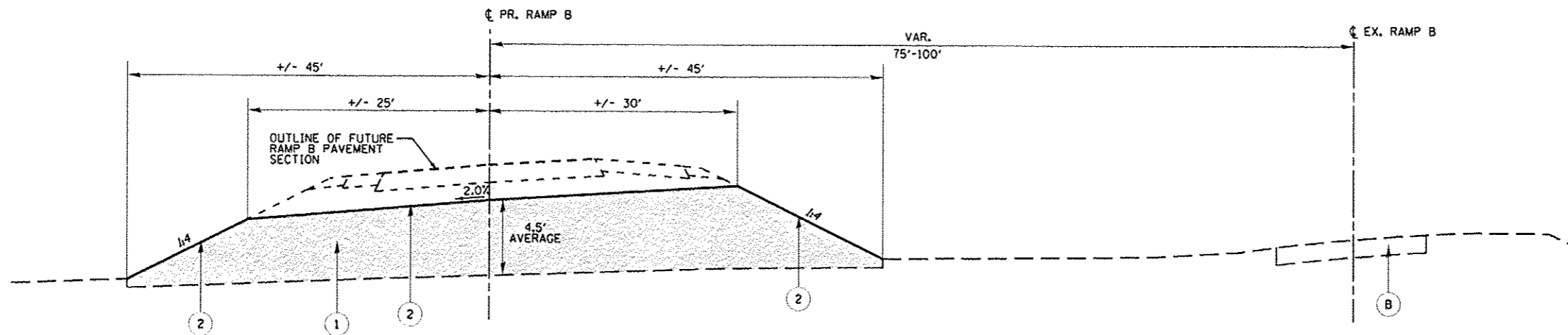
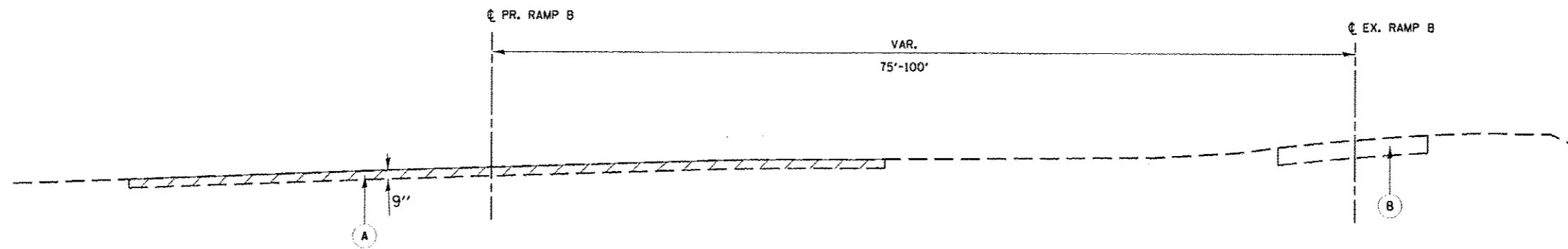
* SPECIALTY ITEM

Rev. 9-4-14

Rev.

FILE NAME = D:\BYP31-INT-04-500.dgn

USER NAME = llugo	DESIGNED MEA	REVISIONS	STATE OF ILLINOIS DEPARTMENT OF TRANSPORTATION	SUMMARY OF QUANTITIES				F.A.I. RTE.	SECTION	COUNTY	TOTAL SHEETS	SHEET NO.
PLOT SCALE = 1:2,000	DRAWN MEA	REVISIONS		SCALE: NONE	SHEET NO. 1 OF 1 SHEETS	STA.	TO STA.	55	(99-1HB-1A)	WILL	33	4
PLOT DATE = 7/16/2014	CHECKED PJO	REVISIONS						CONTRACT NO. 60Y53		ILLINOIS FED. AID PROJECT		
	DATE 7/16/2014	REVISIONS										



EXISTING LEGEND

- (A) TOPSOIL EXCAVATION AND PLACEMENT
- (B) EXISTING RAMP PAVEMENT AND PAVED SHOULDER, TO REMAIN

PROPOSED LEGEND

- (1) FURNISHED EXCAVATION
- (2) TEMPORARY EROSION CONTROL SEEDING

Rev. 9-4-14

FILE NAME : D:\60Y53\ext\typical\01 PR RAMP B.dwg

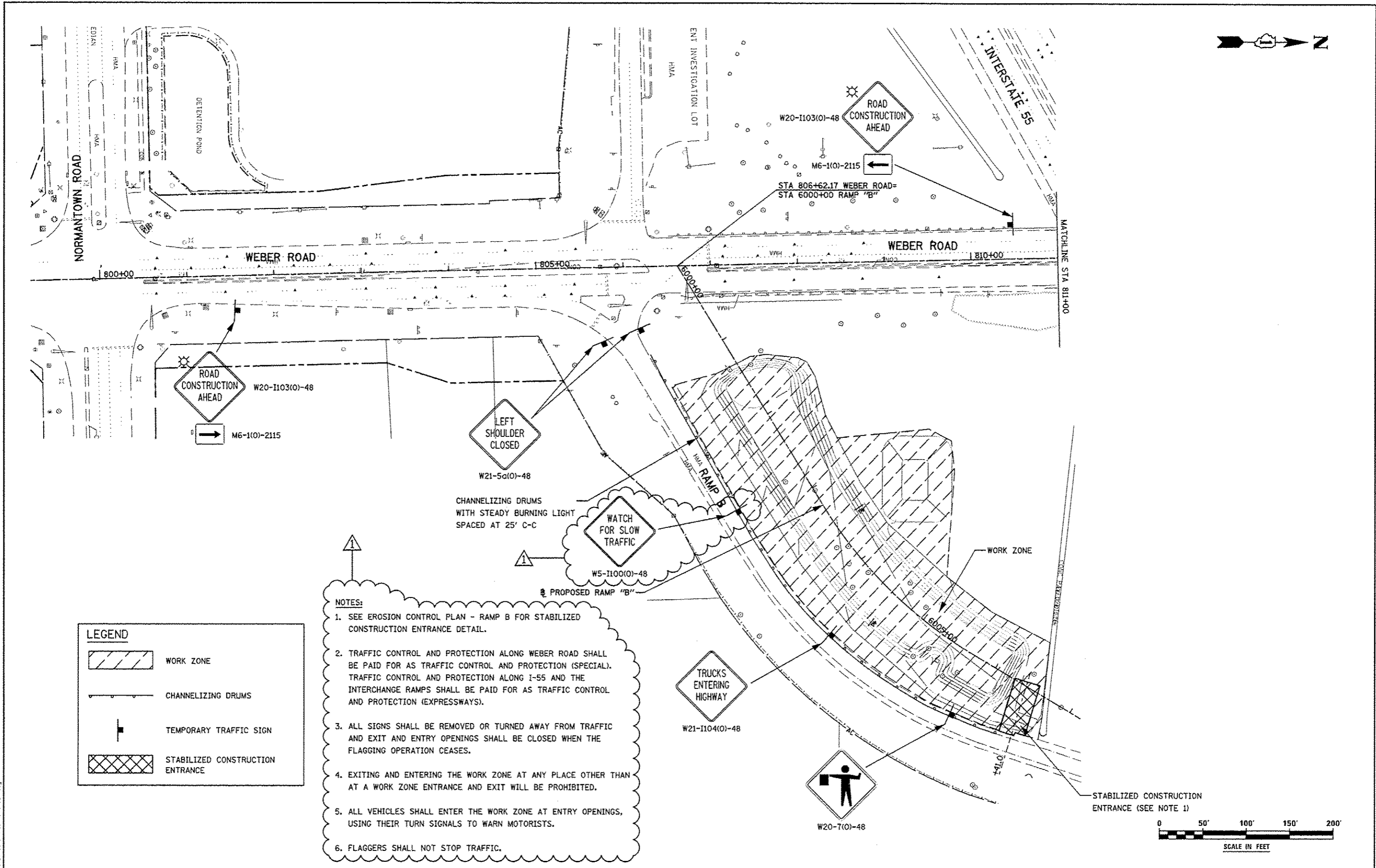
USER NAME = lljrgp	DESIGNED LL	REVISED -
DRAWN KES	REVISED -	
PILOT SCALE = 1/16"=1'-0"	CHECKED PJO	REVISED -
PLOT DATE = 7/16/2014	DATE 7/16/2014	REVISED -

STATE OF ILLINOIS
DEPARTMENT OF TRANSPORTATION

TYPICAL SECTIONS
RAMP B

SCALE: NONE SHEET NO. 1 OF 1 SHEETS STA. TO STA.

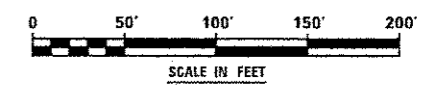
F.A.I. RTE.	SECTION	COUNTY	TOTAL SHEETS	SHEET NO.
55	(99-1HB-1)A	WILL	33	5
			CONTRACT NO. 60Y53	
ILLINOIS FED. AID PROJECT				



LEGEND

	WORK ZONE
	CHANNELIZING DRUMS
	TEMPORARY TRAFFIC SIGN
	STABILIZED CONSTRUCTION ENTRANCE

- NOTES:**
1. SEE EROSION CONTROL PLAN - RAMP B FOR STABILIZED CONSTRUCTION ENTRANCE DETAIL.
 2. TRAFFIC CONTROL AND PROTECTION ALONG WEBER ROAD SHALL BE PAID FOR AS TRAFFIC CONTROL AND PROTECTION (SPECIAL). TRAFFIC CONTROL AND PROTECTION ALONG I-55 AND THE INTERCHANGE RAMP SHALL BE PAID FOR AS TRAFFIC CONTROL AND PROTECTION (EXPRESSWAYS).
 3. ALL SIGNS SHALL BE REMOVED OR TURNED AWAY FROM TRAFFIC AND EXIT AND ENTRY OPENINGS SHALL BE CLOSED WHEN THE FLAGGING OPERATION CEASES.
 4. EXITING AND ENTERING THE WORK ZONE AT ANY PLACE OTHER THAN AT A WORK ZONE ENTRANCE AND EXIT WILL BE PROHIBITED.
 5. ALL VEHICLES SHALL ENTER THE WORK ZONE AT ENTRY OPENINGS, USING THEIR TURN SIGNALS TO WARN MOTORISTS.
 6. FLAGGERS SHALL NOT STOP TRAFFIC.



FILE NAME: D:\B753-ah-01-101-001.dwg

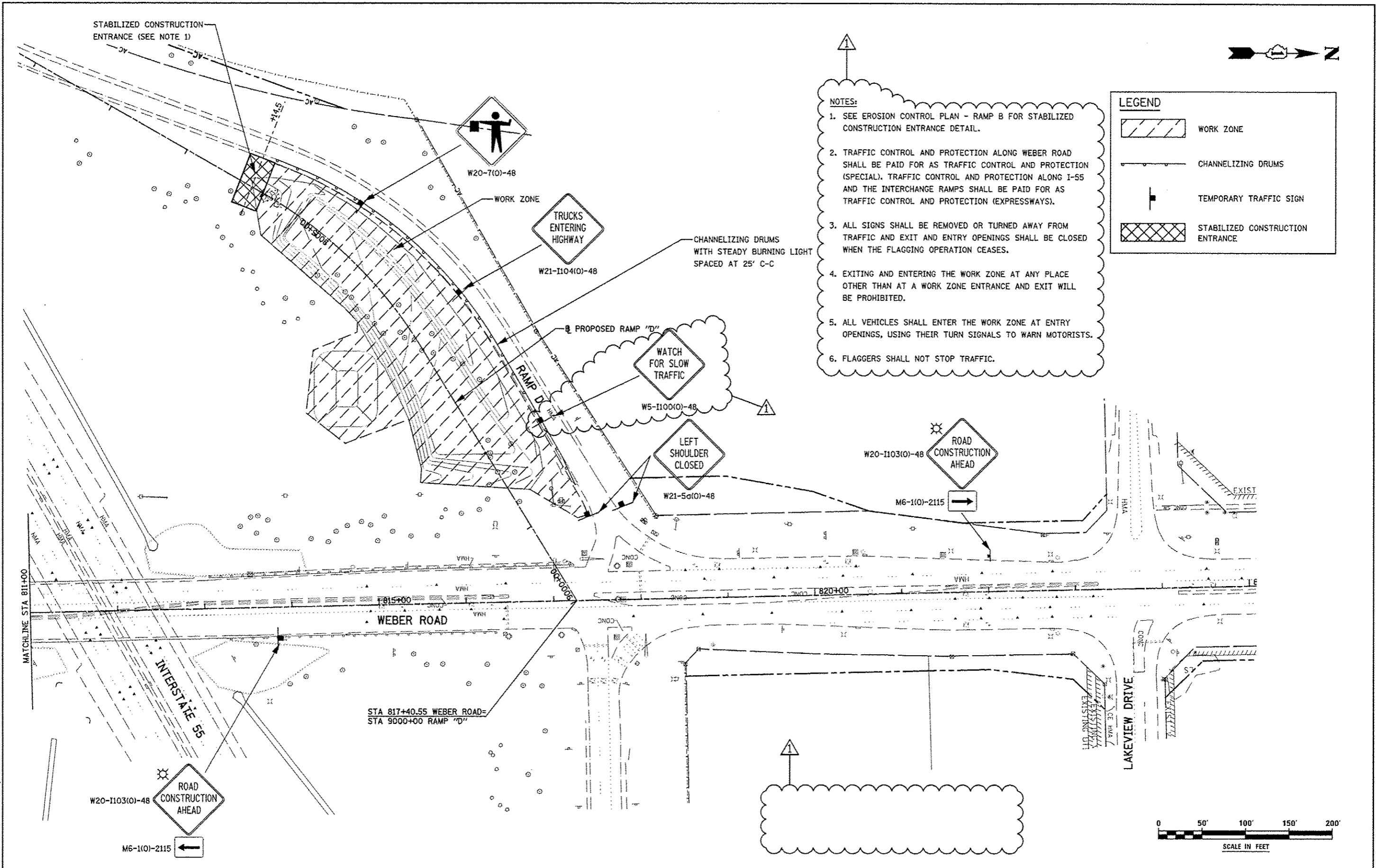
USER NAME: pwhite	DESIGNED PAW	REVISED - ADDENDUM 1 09/02/2014
DRAWN PAW	REVISED -	
CHECKED PJO	REVISED -	
DATE 9/2/2014	REVISED -	

**STATE OF ILLINOIS
DEPARTMENT OF TRANSPORTATION**

MAINTENANCE OF TRAFFIC PLAN - RAMP B

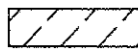
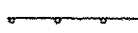


SCALE: AS SHOWN SHEET NO. 1 OF 2 SHEETS STA. _____ TO STA. _____

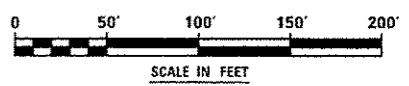
F.A.I. RTE.	SECTION	COUNTY	TOTAL SHEETS	SHEET NO.
55	(99-1HB-11A)	WILL	33	15
CONTRACT NO. 60Y53			ILLINOIS FED. AID PROJECT	



- NOTES:**
1. SEE EROSION CONTROL PLAN - RAMP B FOR STABILIZED CONSTRUCTION ENTRANCE DETAIL.
 2. TRAFFIC CONTROL AND PROTECTION ALONG WEBER ROAD SHALL BE PAID FOR AS TRAFFIC CONTROL AND PROTECTION (SPECIAL). TRAFFIC CONTROL AND PROTECTION ALONG I-55 AND THE INTERCHANGE RAMP SHALL BE PAID FOR AS TRAFFIC CONTROL AND PROTECTION (EXPRESSWAYS).
 3. ALL SIGNS SHALL BE REMOVED OR TURNED AWAY FROM TRAFFIC AND EXIT AND ENTRY OPENINGS SHALL BE CLOSED WHEN THE FLAGGING OPERATION CEASES.
 4. EXITING AND ENTERING THE WORK ZONE AT ANY PLACE OTHER THAN AT A WORK ZONE ENTRANCE AND EXIT WILL BE PROHIBITED.
 5. ALL VEHICLES SHALL ENTER THE WORK ZONE AT ENTRY OPENINGS, USING THEIR TURN SIGNALS TO WARN MOTORISTS.
 6. FLAGGERS SHALL NOT STOP TRAFFIC.

LEGEND

-  WORK ZONE
-  CHANNELIZING DRUMS
-  TEMPORARY TRAFFIC SIGN
-  STABILIZED CONSTRUCTION ENTRANCE

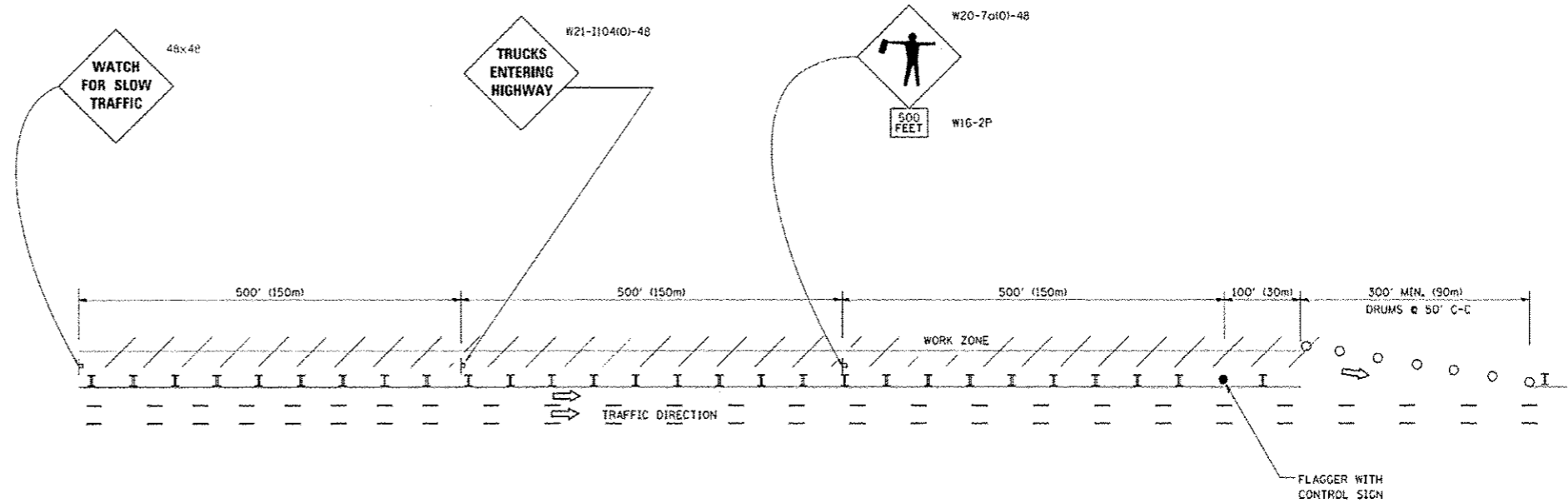


FILE NAME : DIS0503-ahc-02-1071_Aadd.dwg

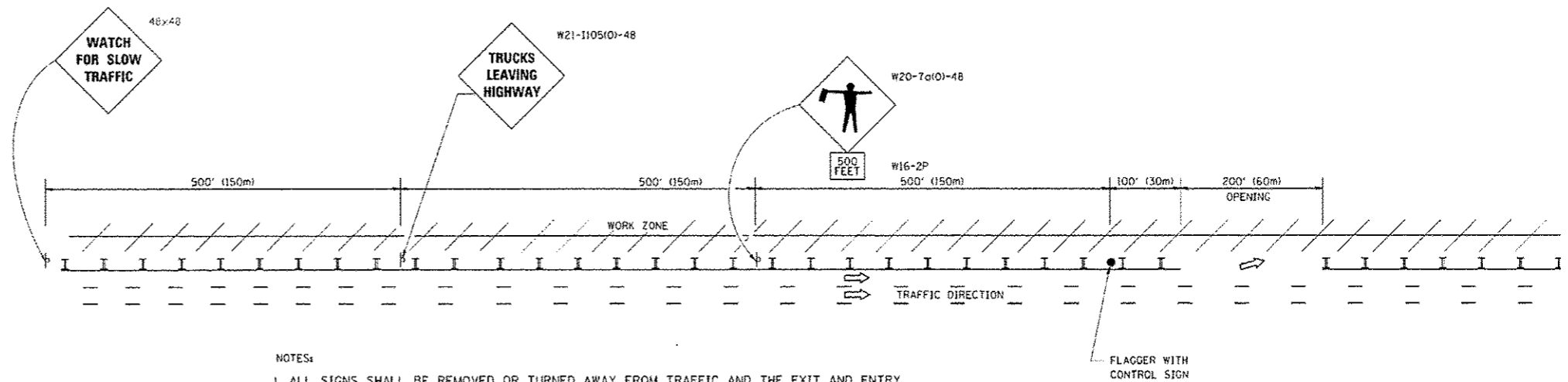
USER NAME : pawlston	DESIGNED PAW	REVISED - ADDENDUM 1 09/02/2014	STATE OF ILLINOIS DEPARTMENT OF TRANSPORTATION	MAINTENANCE OF TRAFFIC PLAN - RAMP D		F.A.T. RTE.	SECTION	COUNTY	TOTAL SHEETS	SHEET NO.	
PLOT SCALE : 1/8"=1'-0"	DRAWN PAW	REVISED -		SCALE: AS SHOWN	SHEET NO. 2 OF 2 SHEETS	STA. _____	55	(99-1HB-1)A	WILL	33	16
PLOT DATE : 9/3/2014	CHECKED PJO	REVISED -		TO STA. _____		CONTRACT NO. 60Y53		ILLINOIS FED. AID PROJECT			

SIGNING FOR FLAGGING OPERATIONS AT WORK ZONE OPENINGS

WORK ZONE EXIT OPENING



WORK ZONE ENTRY OPENING



NOTES:

1. ALL SIGNS SHALL BE REMOVED OR TURNED AWAY FROM TRAFFIC AND THE EXIT AND ENTRY OPENINGS SHALL BE CLOSED WHEN THE FLAGGING OPERATION CEASES. NON OPERATING EQUIPMENT SHALL COMPLY WITH ARTICLE 101.11
2. WORK ZONE OPENINGS SHALL BE A MINIMUM OF ONE HALF MILE APART AND A MINIMUM OF ONE QUARTER MILE FROM ALL ENTRANCE AND EXIT RAMP.
3. EXITING THE WORK ZONE AT ANY PLACE OTHER THAN AT A WORK ZONE EXIT OPENING WILL BE PROHIBITED.
4. ALL VEHICLES SHALL ENTER THE WORK ZONE AT ENTRY OPENINGS, USING THEIR TURN SIGNALS TO WARN MOTORISTS
5. FLAGGERS SHALL NOT STOP TRAFFIC OR DIRECT TRAFFIC INTO AN ADJACENT LANE.

ADDENDUM 1 - 09/02/2014

ALL DIMENSIONS ARE IN INCHES (MILLIMETERS UNLESS OTHERWISE SHOWN)

FILE NAME *	USER NAME *	DESIGNED -	REVISED - J.A.F. 02-06
		DRAWN	REVISED - S.P.B. 01-07
		CHECKED -	REVISED - S.P.B. 12-09
		DATE -	REVISED - M.D. 06-13

STATE OF ILLINOIS
DEPARTMENT OF TRANSPORTATION

FREWAY/EXPRESSWAY SIGNING FOR FLAGGING OPERATIONS
AT WORK ZONE OPENINGS ON FREEWAYS/EXPRESSWAYS

SCALE: NONE SHEET NO. 1 OF 1 SHEETS STA. TO STA.

F.A. RTE.	SECTION	COUNTY	TOTAL SHEETS	SHEET NO.
55	(99-1HB-11A)	WILL	33	27A
TC-18			CONTRACT NO. 60YS3	
FED. ROAD DIST. NO. 1 ILLINOIS FED. AID PROJECT				