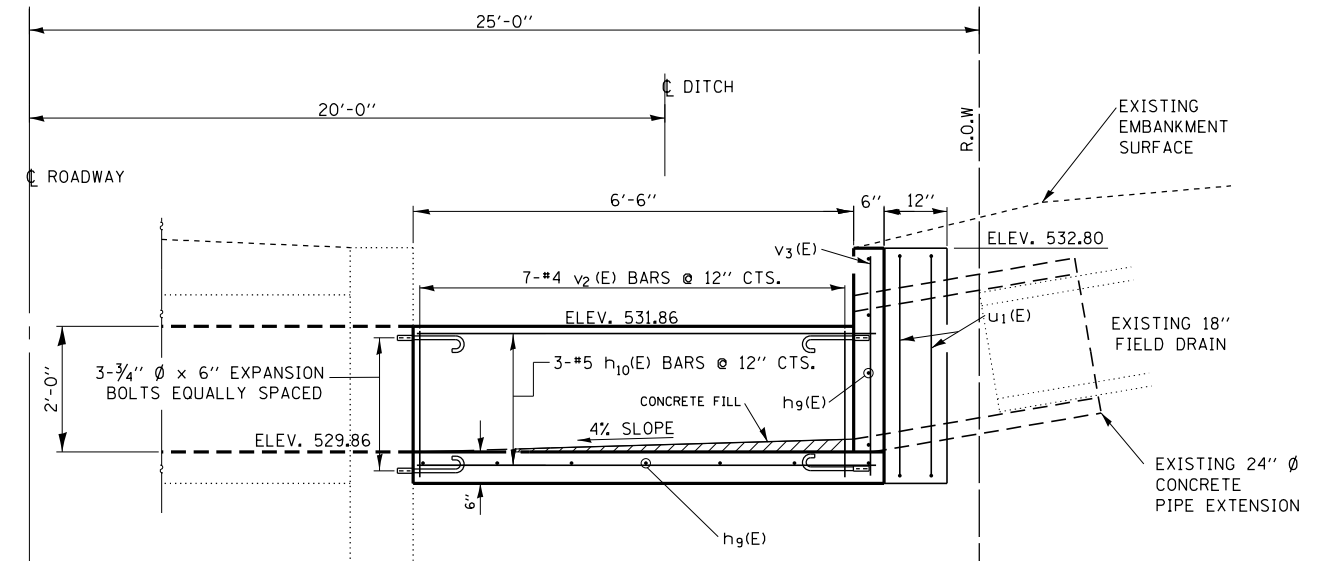
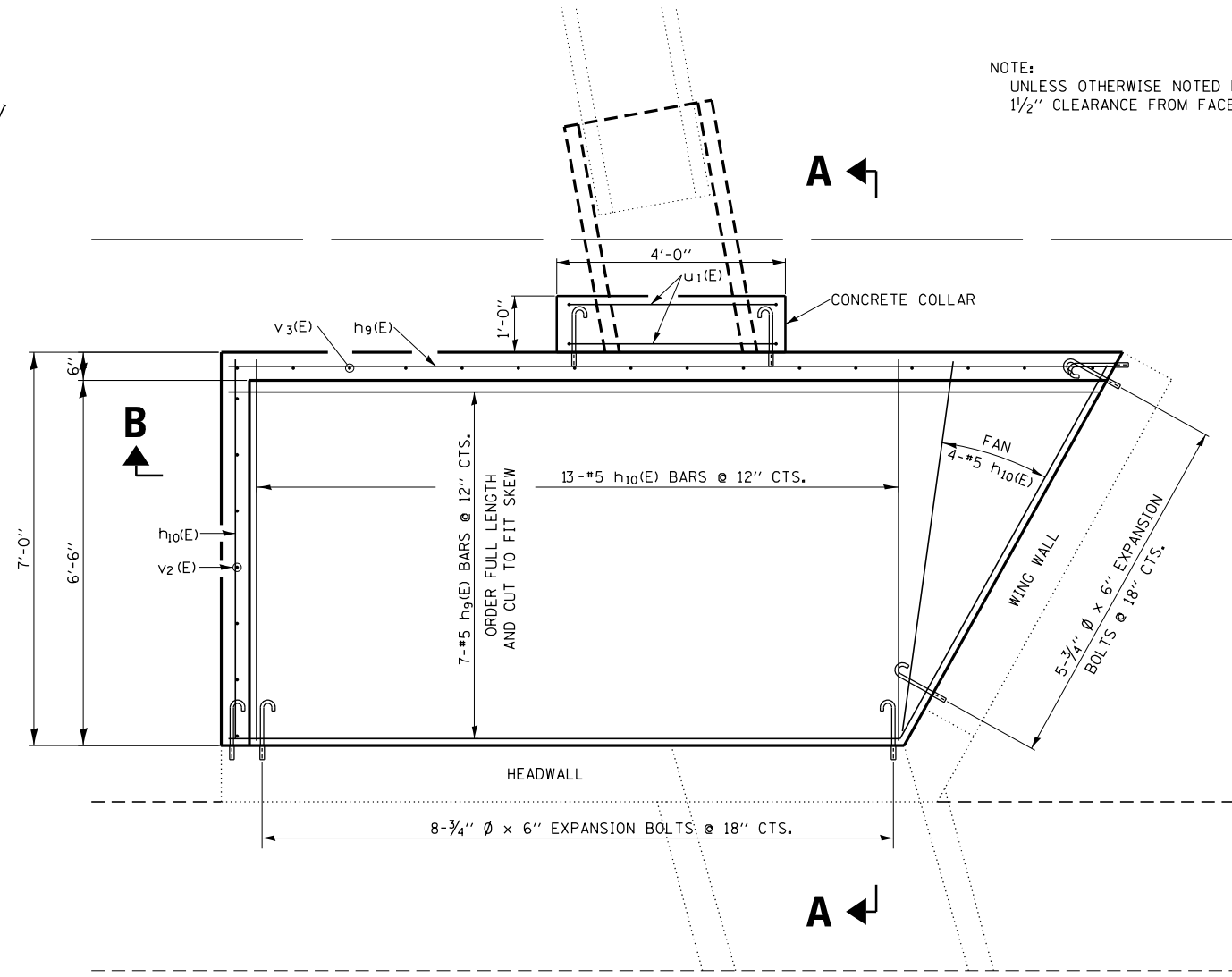


SECTION B-B

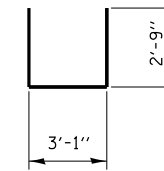


SECTION A-A

NOTE:
UNLESS OTHERWISE NOTED REINFORCEMENT SHALL HAVE A 1/2" CLEARANCE FROM FACE OF CONCRETE. (TYPICAL)



PLAN



u1(E)

BILL OF MATERIALS

BAR	NO.	SIZE	LENGTH	SHAPE
h9	11	5	15'-9"	—
h10	20	5	7'-3"	—
u1	4	4	8'-7"	U
v2	7	4	2'-3"	—
v3	17	4	3'-6"	—
CONCRETE BOX CULVERT			CU YD	3.1
REINFORCEMENT BARS EPOXY COATED			POUND	405
3/4" DIA. x 6"			EACH	27
CONCRETE COLLAR			CU YD	0.4

TABLE OF QUANTITIES SHOWN ARE FOR INFORMATION ONLY

FILE NAME =	USER NAME = woodshankr1	DESIGNED - RW	REVISED - RW 7/31/2014
ei:\pw_work\p1dot\woodshankr1\0366035-sh1-d0362707\0366035-sh1-d0362707.dgn		DRAWN - RW	REVISED -
	PLOT SCALE = 40.0000' / in.	CHECKED - HA	REVISED -
MODELNAME	PLOT DATE = 8/4/2014	DATE - 7/14/2014	REVISED -

STATE OF ILLINOIS
DEPARTMENT OF TRANSPORTATION

**CAST-IN-PLACE CONCRETE BOX CULVERT
DROP BOX DETAILS**

SCALE 20 SHEET 1 OF 1 SHEETS STA. TO STA.

F.A.P. RTE.	SECTION	COUNTY	TOTAL SHEETS	SHEET NO.
623	(0)T	LASALLE	16	11
CONTRACT NO. 66D35			ILLINOIS FED. AID PROJECT	