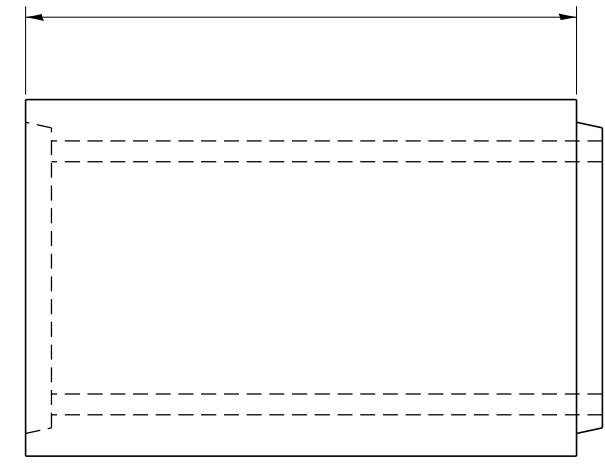


SIDE VIEW

END VIEW

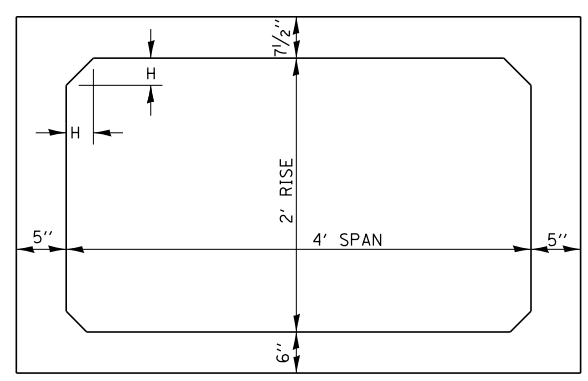
PRECAST CONCRETE BOX CULVERT END SECTION

GENERAL NOTES:
 MINIMUM COVER FOR BOX CULVERTS SHALL BE 6".

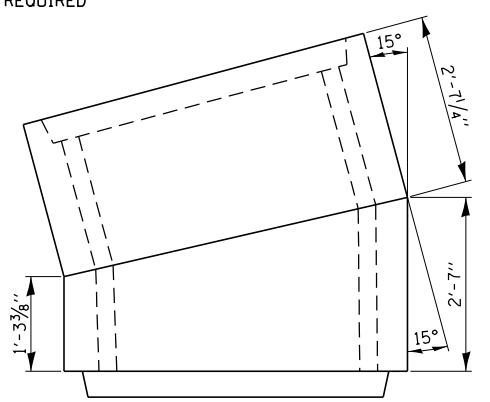


ELEVATION

2 - 4'-6" SECTIONS REQUIRED
 2 - 6'-0" SECTIONS REQUIRED



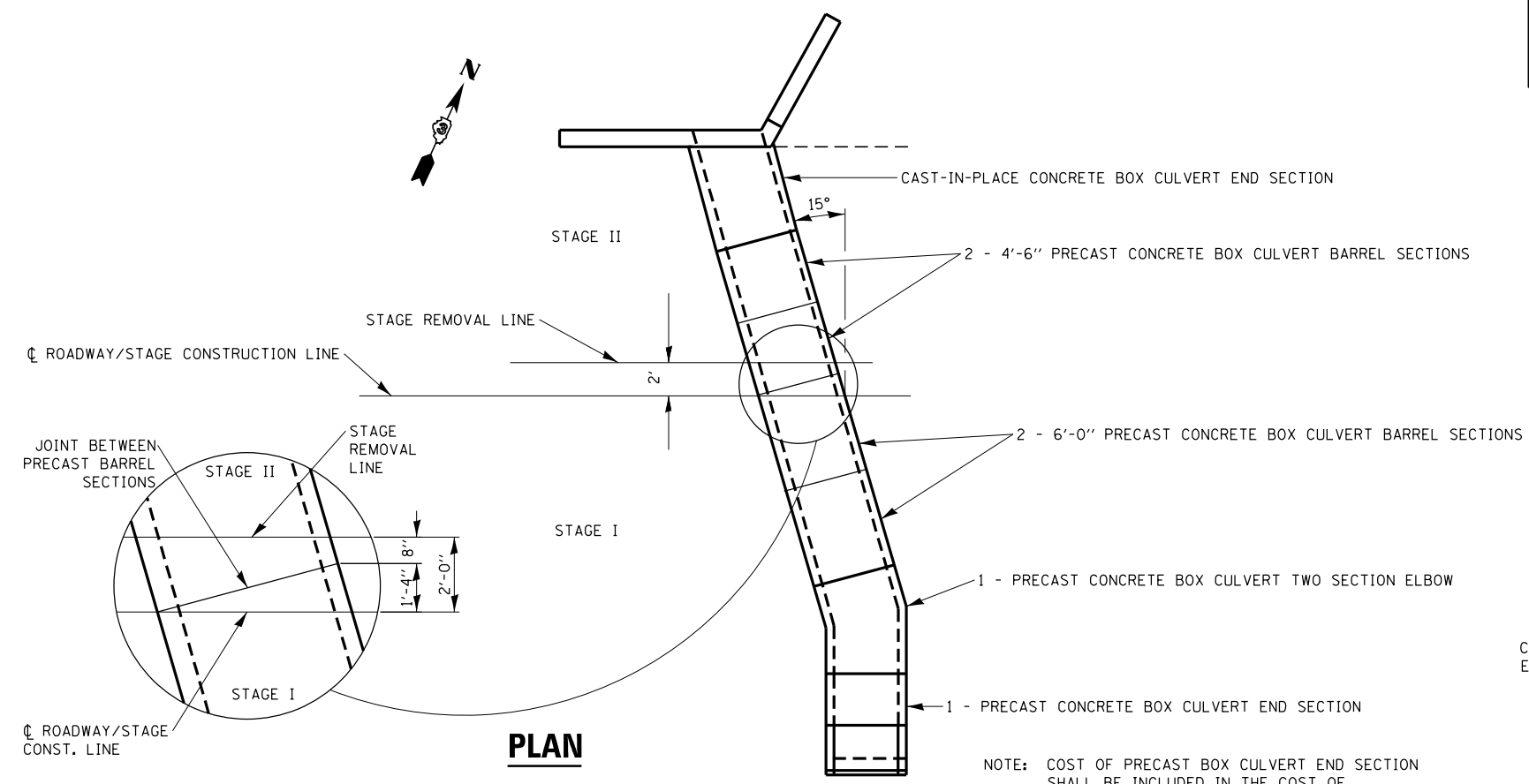
TYPICAL BARREL SECTION



PLAN

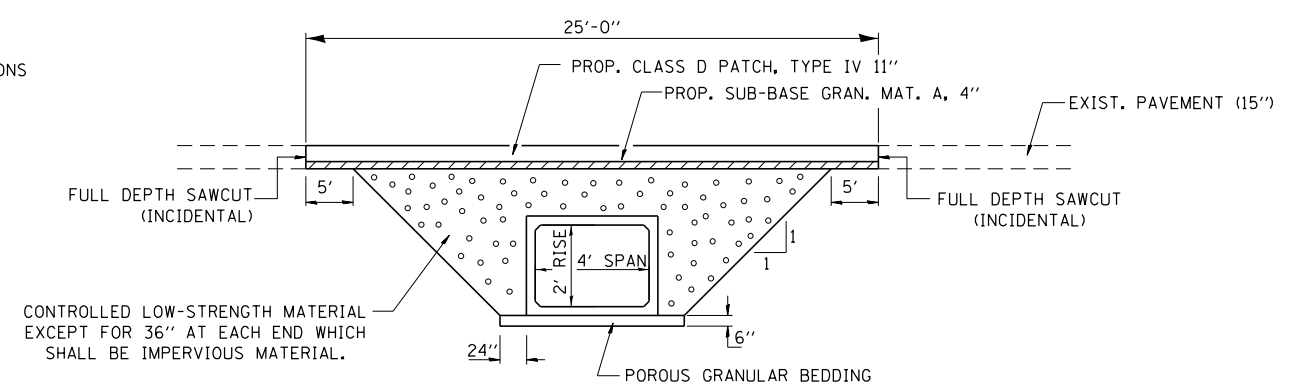
TWO SECTION ELBOW

1 EACH REQUIRED



PLAN

PRECAST CONCRETE BOX CULVERT



SECTION THROUGH PRECAST BOX CULVERT

FILE NAME =	USER NAME = woodshankr1	DESIGNED - RW	REVISED -
ei:\pw\work\p\idot\woodshankr1\0362707\0366035-sh1-deta1s.dgn		DRAWN - RW	REVISED -
		CHECKED - HA	REVISED -
		DATE - 7/14/2014	REVISED -

**STATE OF ILLINOIS
 DEPARTMENT OF TRANSPORTATION**

PRECAST CONCRETE BOX CULVERT DETAILS

SCALE 20 SHEET 1 OF 2 SHEETS STA. TO STA.

F.A.P. RTE.	SECTION	COUNTY	TOTAL SHEETS	SHEET NO.
623	(01)	LASALLE	16	12
CONTRACT NO. 66D35			ILLINOIS FED. AID PROJECT	