

STATE OF ILLINOIS
DEPARTMENT OF TRANSPORTATION
DIVISION OF HIGHWAYS

**PROPOSED
HIGHWAY PLANS**

FAP ROUTE 685 (IL 9)
SECTION 39-1-2

PATCHING
FULTON COUNTY

C-94-130-14

F.A.P. RTE.	SECTION	COUNTY	TOTAL SHEETS	SHEET NO.
685	39-1-2	FULTON	10	1
		ILLINOIS	CONTRACT NO. 68C18	

INDEX OF SHEETS

1. COVER SHEET
2. GENERAL NOTES
3. STATUS OF UTILITIES
4. SUMMARY OF QUANTITIES
5. TYPICAL SECTIONS
6. SCHEDULES OF QUANTITIES
7. LINE DIAGRAM
8. ROW, UTILITY, BENCHMARK INFORMATION
- 9.-10. DISTRICT STANDARDS
HIGHWAY STANDARDS

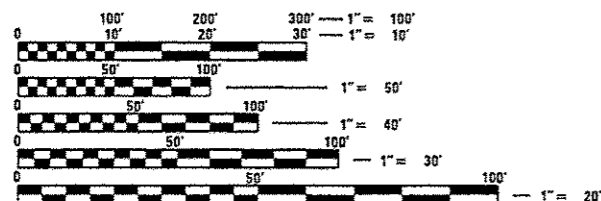
HIGHWAY STANDARDS

- 442201-03
- 701336-06
- 701316-08
- 701901-03

DISTRICT STANDARDS

780001-D4

- ADT = 725 (2013)
- MU = 5.5% (2013)
- SU = 6.9% (2013)

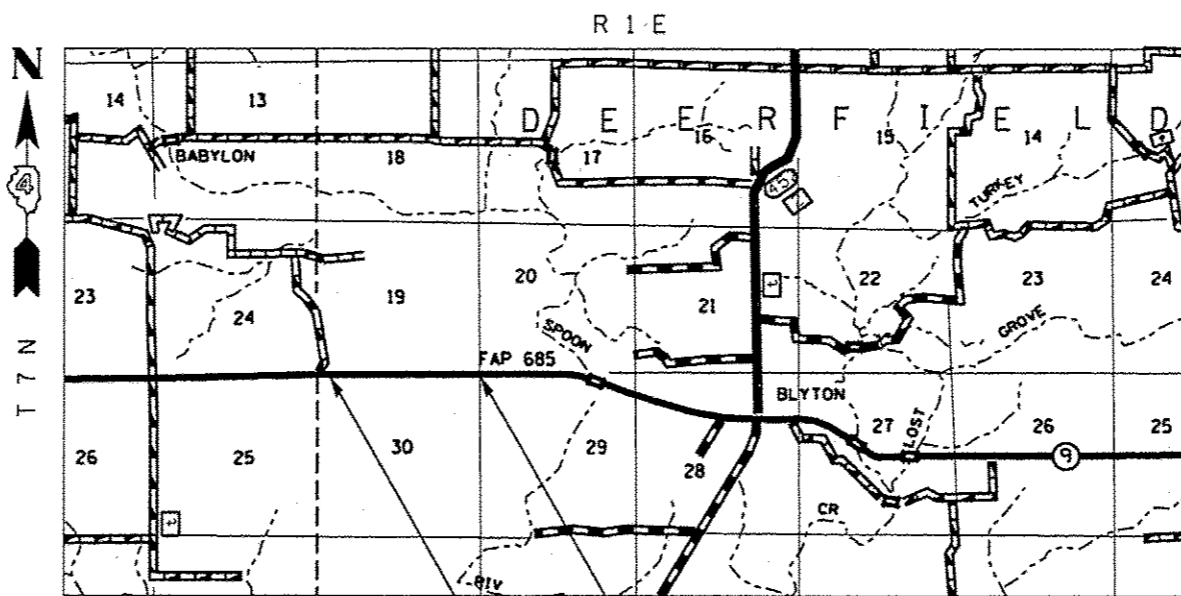


FULL SIZE PLANS HAVE BEEN PREPARED USING STANDARD ENGINEERING SCALES. REDUCED SIZED PLANS WILL NOT CONFORM TO STANDARD SCALES. IN MAKING MEASUREMENTS ON REDUCED PLANS, THE ABOVE SCALES MAY BE USED.

J.U.L.I.E.
JOINT UTILITY LOCATION INFORMATION FOR EXCAVATION
1-800-892-0123
OR 811

PROJECT ENGINEER CHRISTOPHER MAUSHARD (309)671-3453
PROJECT MANAGER MIKE MOHAMED (309)671-3462

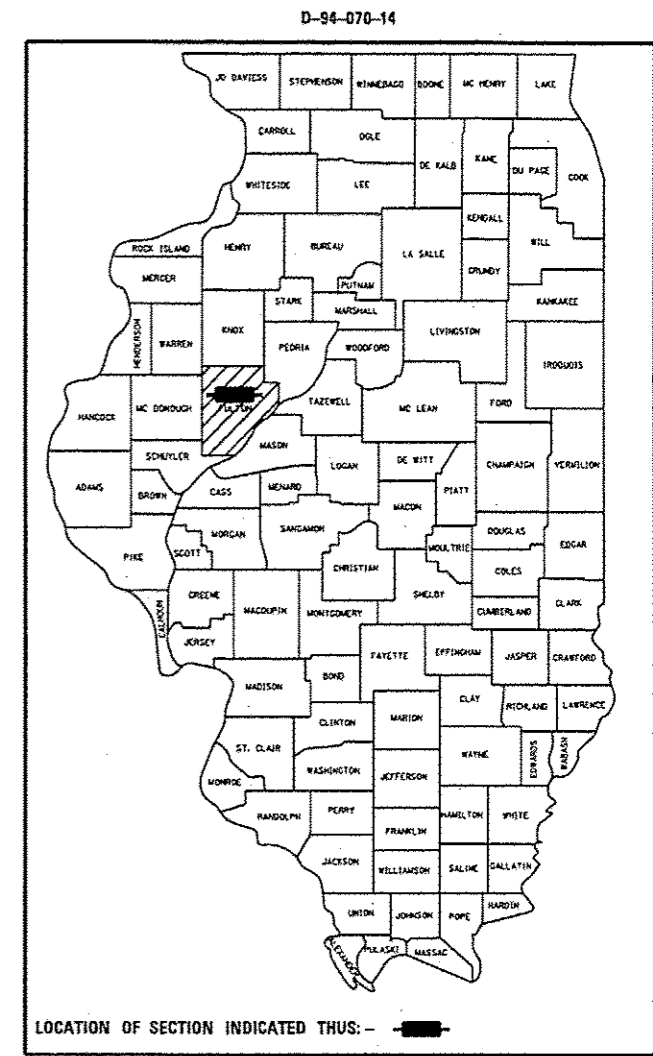
CONTRACT NO. 68C18



PROJECT ENDS
STA. 173+98

PROJECT BEGINS
STA. 128+00

GROSS LENGTH = 4,598 FT = 0.87 MI
NET LENGTH = 3,522 FT = 0.67 MI



PROJECT DESCRIPTION:

THE WORK ON THIS PROJECT
CONSISTS OF PAVEMENT PATCHING

STATE OF ILLINOIS
DEPARTMENT OF TRANSPORTATION
DIVISION OF HIGHWAYS

SUBMITTED June 27 20 14
Kensil A. Garnett
DEPUTY DIRECTOR OF HIGHWAYS, REGION ENGINEER

Aug 15 20 14
John D. Baranowski P.E.
ENGINEER OF DESIGN AND ENVIRONMENT

Aug 15 20 14
Chris Osman P.E.
DIRECTOR OF HIGHWAYS, CHIEF ENGINEER

PRINTED BY THE AUTHORITY
OF THE STATE OF ILLINOIS

GENERAL NOTES

COMMITMENTS

COMMITMENTS ARE NOT TO BE ALTERED WITHOUT THE WRITTEN APPROVAL OF ALL PARTIES TO WHICH COMMITMENT WAS MADE.

PROPERTY OWNER ACCESS REQUIREMENT

ACCESS MUST BE MAINTAINED TO ALL EXISTING PROPERTIES DURING CONSTRUCTION PER ARTICLE 107.09 UNLESS ARRANGEMENTS ARE MADE IN WRITING BY THE CONTRACTOR WITH THE PROPERTY OWNERS WITH A COPY TO THE ENGINEER FOR SHORT-TERM CLOSURES.

ENVIRONMENTAL REVIEWS

PRIOR TO THE USE OF ANY PROPOSED BORROW AREAS, USE AREAS (TEMPORARY ACCESS ROADS, DETOURS, RUN-AROUNDS, ETC.) AND/OR WASTE AREAS, THE CONTRACTOR SHALL FILE THE REQUIRED ENVIRONMENTAL RESOURCE REQUEST SURVEYS ACCORDING TO SECTION 107.22 OF THE STANDARD SPECIFICATIONS. THESE SURVEYS ARE REQUIRED IN ORDER FOR THE DEPARTMENT TO CONDUCT CULTURAL AND BIOLOGICAL RESOURCE SURVEYS FOR THE PROPOSED SITE.

PRIOR TO ANY WASTE MATERIALS BEING REMOVED FROM THE CONSTRUCTION SITE THE REQUIRED ENVIRONMENTAL RESOURCE SURVEYS WILL NEED TO BE OBTAINED AND FILED BY THE CONTRACTOR. EXCESS WASTE PRODUCTS REMOVED FROM THE CONSTRUCTION SITE SHALL BE DISPOSED OF AS REQUIRED IN SECTION 202.03 OF THE STANDARD SPECIFICATIONS.

ANY PROTRUDING METAL BARS SHALL BE REMOVED PRIOR TO THE DISPOSAL OF BROKEN CONCRETE AT APPROVED DISPOSAL SITES.

THE REQUIRED ENVIRONMENTAL RESOURCE DOCUMENTATION SHALL INCLUDE THE FOLLOWING:

- BDE FORM 2289 (ENVIRONMENTAL SURVEY REQUEST)
- A LOCATION MAP SHOWING THE SIZE LIMITS AND LOCATION OF THE USE AREA
- SIGNED PROPERTY OWNER AGREEMENT FORM - D4 P10100
- COLOR PHOTOGRAPHS DEPICTING THE USE AREA
- BORROW AREA ENTRY AGREEMENT FORM - D4 P10101

BITUMINOUS MIXTURE REQUIREMENTS

Mixture Use(s):	Surface Lift (2" nominal)	Lower Lifts (4", 3", 3")
AC/PG:	PG 64-22	PG 64-22
RAP% (Max): **	15%	15%
Design Air Voids:	4.0% @ N=50	4.0% @ N=50
Mixture Composition: (Gradation Mixture)	IL 9.5 or IL12.5	IL 9.5 or IL12.5
Friction Aggregate:	Mixture D (dolomite only)	N.A.

** IF RAP OPTION IS SELECTED, THE ASPHALT CEMENT GRADE MAY NEED TO BE ADJUSTED, THIS WILL BE DETERMINED BY THE MATERIALS ENGINEER.

FILE NAME : IL 9 Spoon River Flood 2014.dgn	USER NAME : eubreyga	DESIGNED -	REVISED -	STATE OF ILLINOIS DEPARTMENT OF TRANSPORTATION	GENERAL NOTES	F.A.P. RTE.	SECTION	COUNTY	TOTAL SHEETS	SHEET NO.	
Default	PLOT SCALE = 40.0000 / in.	DRAWN -	REVISED -			685	39-1-2	FULTON	10	2	
	PLOT DATE = 6/27/2014	CHECKED -	REVISED -			CONTRACT NO. 68C18		ILLINOIS FED. AID PROJECT			
		DATE -	REVISED -			NOT TO SCALE	SHEET 1	OF 1	SHEETS	STA.	TO STA.

STATUS OF UTILITIES

CITY OF BUSHNELL					
Route	Offset	Location	Type of Utility	Type of Conflict	Disposition
IL 9	39'-6" LT	STA. 178+00	BURIED GAS	GRADING FORESLOPE	CAUTION
IL 9	42' LT	STA. 179+00	BURIED GAS	GRADING FORESLOPE	CAUTION
IL 9	40'-6" LT	STA. 180+00	BURIED GAS	GRADING FORESLOPE	CAUTION

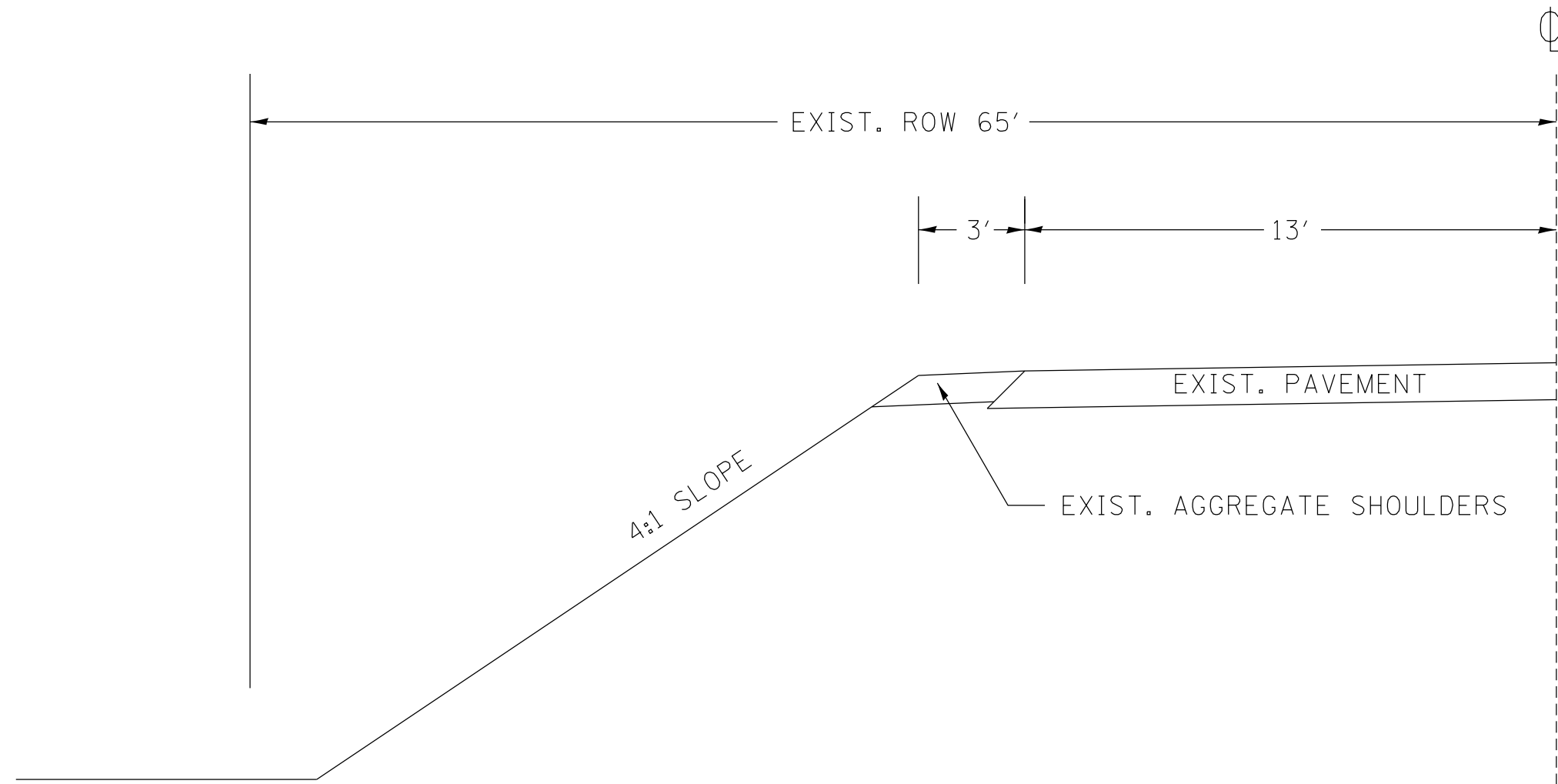
NOTE: Please check all your facilities within the construction limits of this project.

SUMMARY OF QUANTITIES

CODE NO.	PAY ITEM	UNIT	TOTAL QUANTITY	0005 FULTON RURAL 100% STATE
44200150	PAVEMENT PATCHING, TYPE IV, 12 INCH	SQ YD	1,565	1,565
67100100	MOBILIZATION	L SUM	1	1
70100100	TRAFFIC CONTROL AND PROTECTION, STANDARD 701316	EACH	1	1
70100600	TRAFFIC CONTROL AND PROTECTION, STANDARD 701336	L SUM	1	1
70103815	TRAFFIC CONTROL SURVEILLANCE	CAL DA	15	15
* 78001110	PAINT PAVEMENT MARKING - LINE 4"	FOOT	4,598	4,598

6

* SPECIALTY ITEM



EXISTING TYPICAL SECTION

STA. 128+00 TO STA. 173+98

FILE NAME = IL 9 Spoon River Flood 2014.dgn	USER NAME = aubreygs	DESIGNED -	REVISED -
		DRAWN -	REVISED -
	PLOT SCALE = 40.0000' / in.	CHECKED -	REVISED -
Default	PLOT DATE = 6/27/2014	DATE -	REVISED -

**STATE OF ILLINOIS
DEPARTMENT OF TRANSPORTATION**

TYPICAL SECTIONS

NOT TO SCALE SHEET 1 OF 1 SHEETS STA. TO STA.

F.A.P. RTE.	SECTION	COUNTY	TOTAL SHEETS	SHEET NO.
685	39-1-2	FULTON	10	5
				CONTRACT NO. 68C18
ILLINOIS FED. AID PROJECT				

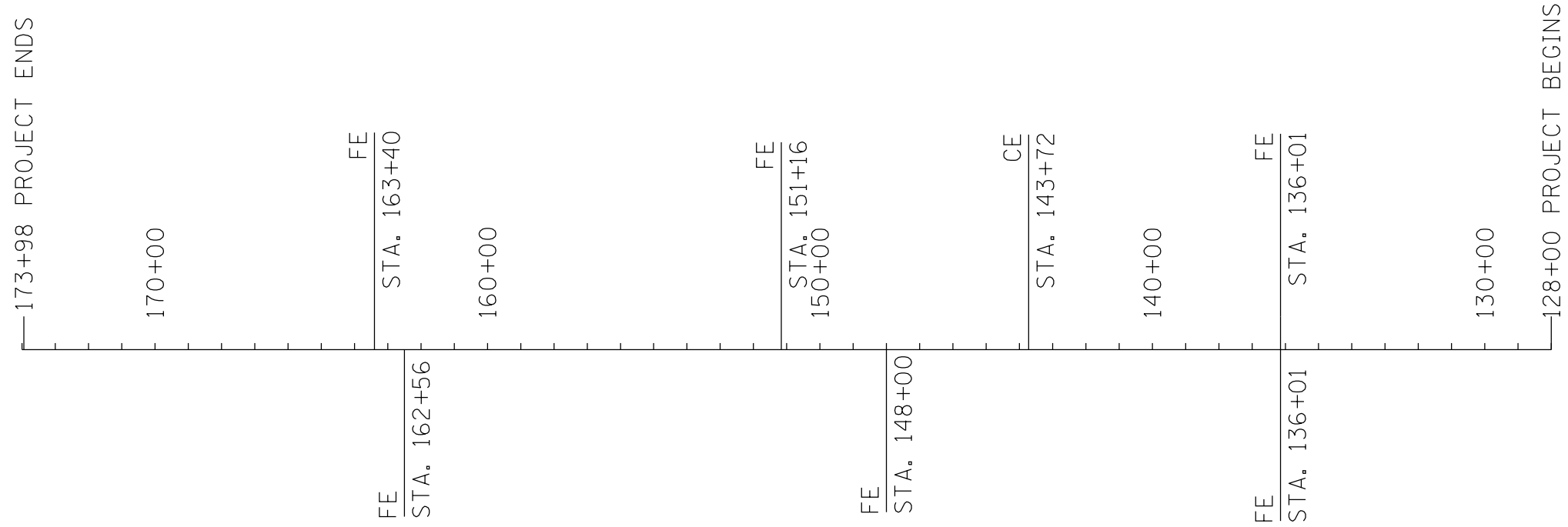
PAVEMENT PATCHING, TYPE IV, 12 INCH					
LOCATION				SIZE (W X L)	SQ YD
LT. STA.	128+00	TO STA.	134+59	4 X 659	292.89
LT. STA.	144+52	TO STA.	147+84	4 X 332	147.56
LT. STA.	148+17	TO STA.	162+31	4 X 1,414	628.44
LT. STA.	162+81	TO STA.	173+98	4 X 1,117	496.44
TOTAL					1,565

TRAFFIC CONTROL AND PROTECTION, STANDARD		
LOCATION	701336	701316
	L SUM	EACH
IL 9	1	1
TOTAL		
	1	1

TRAFFIC CONTROL SURVEILLANCE	
LOCATION	CAL DA
IL 9	15
TOTAL	
	15

PAINT PAVEMENT MARKING - LINE 4"		
LOCATION		EDGE LINE
		FT
STA.	128+00 TO STA. 173+98	4,598.00
TOTAL		
		4,598

MOBILIZATION	
LOCATION	L SUM
IL 9	1
TOTAL	
	1



FILE NAME = IL 9 Spoon River Flood 2014.dgn	USER NAME = aubreys	DESIGNED -	REVISED -
		DRAWN -	REVISED -
Default	PLOT SCALE = 40.0000' / in.	CHECKED -	REVISED -
	PLOT DATE = 6/27/2014	DATE -	REVISED -

**STATE OF ILLINOIS
DEPARTMENT OF TRANSPORTATION**

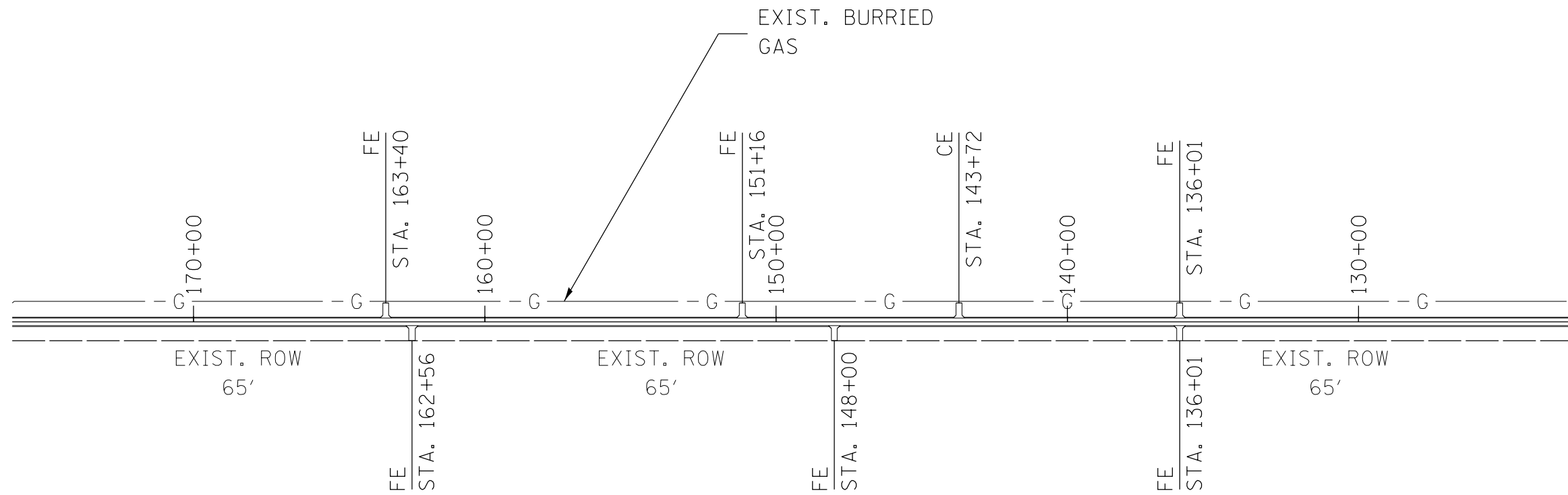
LINE DIAGRAM

NOT TO SCALE SHEET 1 OF 1 SHEETS STA. TO STA.

F.A.P. RTE.	SECTION	COUNTY	TOTAL SHEETS	SHEET NO.
685	39-1-2	FULTON	10	7
ILLINOIS FED. AID PROJECT			CONTRACT NO. 68C18	



FOR INFORMATION ONLY

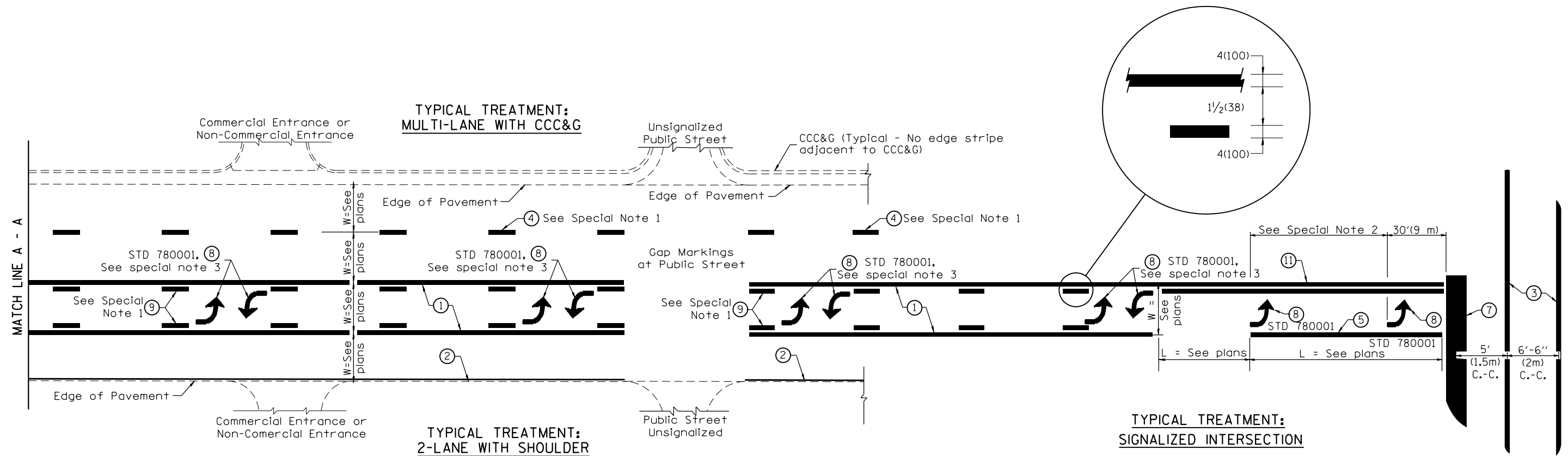


TEMPORARY BENCHMARK

CHIS
 TP PARAPET S.E. COR. BR.
 ELEV. 518.29

FILE NAME = IL 9 Spoon River Flood 2014.dgn	USER NAME = aubreygs	DESIGNED -	REVISED -	STATE OF ILLINOIS DEPARTMENT OF TRANSPORTATION	ROW, UTILITY, BENCHMARK INFORMATION			F.A.P. RTE.	SECTION	COUNTY	TOTAL SHEETS	SHEET NO.
		DRAWN -	REVISED -									
		CHECKED -	REVISED -									
		DATE -	REVISED -			NOT TO SCALE	SHEET 1	OF 1	SHEETS	STA.	TO STA.	
Default	PLOT SCALE = 40.0000' / in. PLOT DATE = 6/27/2014											
											CONTRACT NO. 68C18	ILLINOIS FED. AID PROJECT

DESIGNER NOTES:
1. Include State Standard 780001 (Typical Pavement Markings)



FLUSH PAVED MEDIAN: TWO-WAY LEFT TURN LANE WITH ONE-WAY LEFT TURN LANE AT SIGNALIZED INTERSECTION

TYPICAL PAVEMENT MARKING LEGEND

(Note: This is a District Standard Legend. Some elements may not apply to specific project.)

- ① 4(100) Solid (Yellow)
- ② 4(100) Solid (White)
- ③ 2-6(150) Crosswalk @ 6'-6" (2m)min C.-C. (White)
2-8(200) Crosswalk @ 6'-6" (2m)min C.-C. (White) (When traffic signals are present.)
- ④ 6(150) Skip-Dash (White) (See Special Note 1)
- ⑤ 8(200) Solid (White)
- ⑥ 12(300) Diagonal (White) (Item ⑥ is shown on Std. 780001)
- ⑦ 24(600) Stop Bar (White)
- ⑧ Letters & Arrows (See Std. 780001 and Special Notes 2 & 3)
- ⑨ 4(100) Skip-Dash (Yellow) (See Special Note 1)
- ⑩ 12(300) Diagonal (Yellow) (See Table A)
- ⑪ 4(100) Double Solid (Yellow) (See Table A)

SPECIAL NOTES

1. Skip-Dash markings will be centered between both ends of city blocks and shall be placed in alignment transversely across the pavement.
2. The following shall apply to arrows located in one-way left turn lanes:
 - A. A minimum of two (2) arrows is required.
 - B. The maximum spacing between arrows is 80' (24 m).
 - C. Arrows shall be evenly spaced if three (3) or more are required.
3. The following shall apply to arrow pairs located in two-way left turn lanes:
 - A. A minimum of two (2) arrow pairs is required.
 - B. The maximum spacing between arrow pairs is 200' (61 m).
 - C. Arrow pairs shall be evenly spaced if three (3) or more are required.
 - D. The spacing between Bi Directional Left Turn Arrows is 33' (10 m).

GENERAL NOTES

1. Refer to State Standard 780001 for additional Pavement Markings including letters & arrows.
2. See Plans for Pavement Markings adjacent to curbed islands and medians, and through lane reductions.

01-01-97	RENUM. F-8.03, NEW REVISION BOX	T.P.	10-16-06	REVISED TO 2007 SPEC.
02-07-97	ADD BI DIRECTIONAL DIMENSION	J.A.		
10-97	CORRECT BI DIRECTIONAL DIMENSION	J.A.		
08-02	ADD CROSSWALK DMNS. WITH T.S.	M.A.		

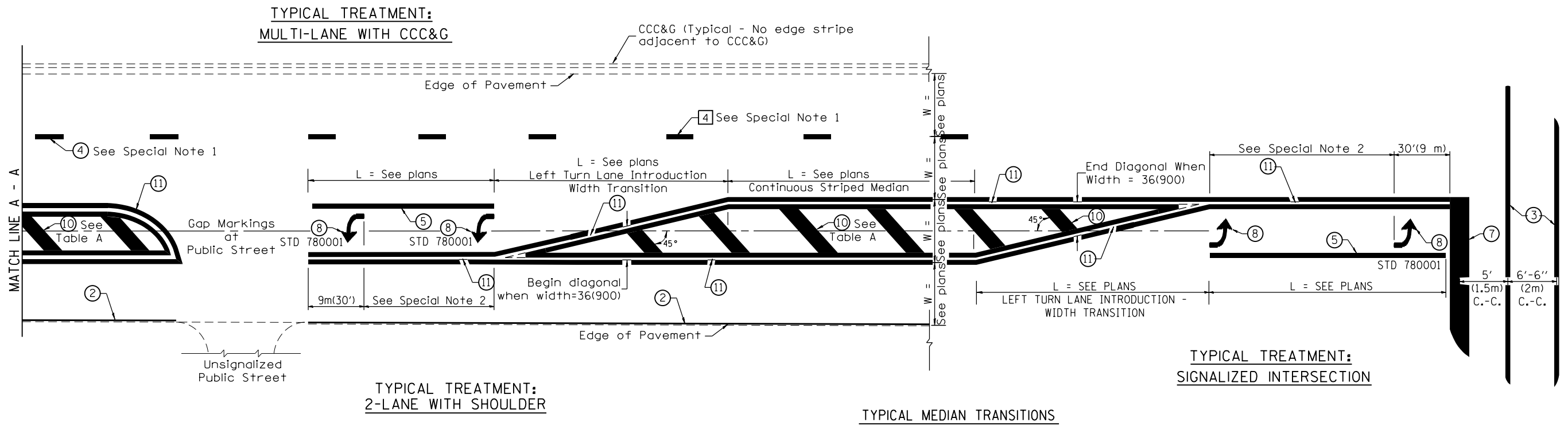
**STATE OF ILLINOIS
DEPARTMENT OF TRANSPORTATION**

TYPICAL PAVEMENT MARKINGS

NOT TO SCALE

SHT. 1 OF 2
CADD STD. 780001-D4

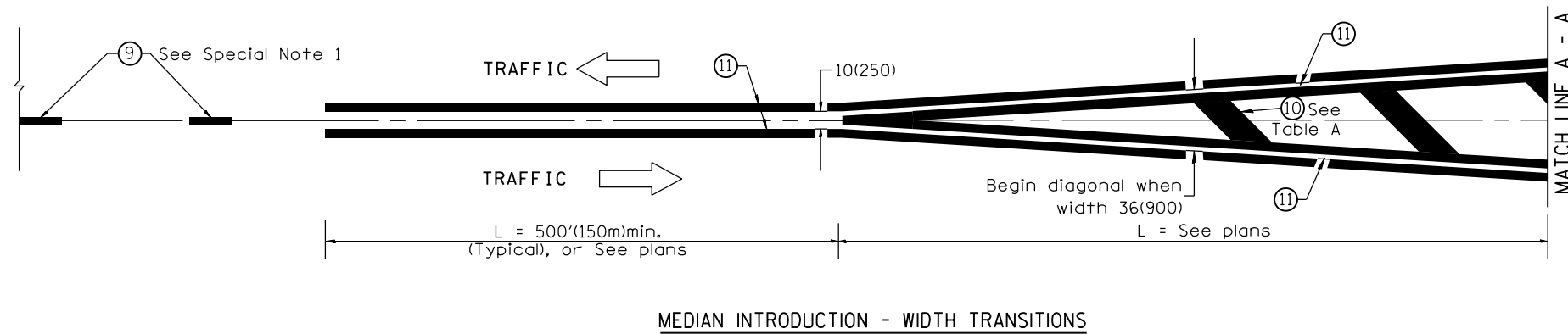
F.A.P. RTE.	SECTION	COUNTY	TOTAL SHEETS	SHEET NO.
685	39-1-2	FULTON	10	9
CONTRACT NO. 68C18				
FED. ROAD DIST. NO. ILLINOIS FED. AID PROJECT				



FLUSH PAVED MEDIAN: RESTRICTED LEFT TURN LANE

TABLE A
RECOMMENDED SPACING BETWEEN DIAGONAL LINES

SPEED LIMIT RANGE	INTERSECTION CHANNELIZATION (Includes Width Transitions for Median and Left Turn Lane Introductions)	
	CONTINUOUS	
Less Than 30 mph (50 km/h)	50' (15m)	15' (5m)
30 - 45 mph (50 - 70 km/h)	75' (23m)	20' (6m)
Over 45 mph (70 km/h)	150' (46m)	30' (9m)



All dimensions are in inches (millimeters) unless otherwise noted.