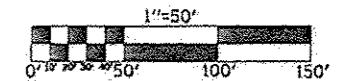


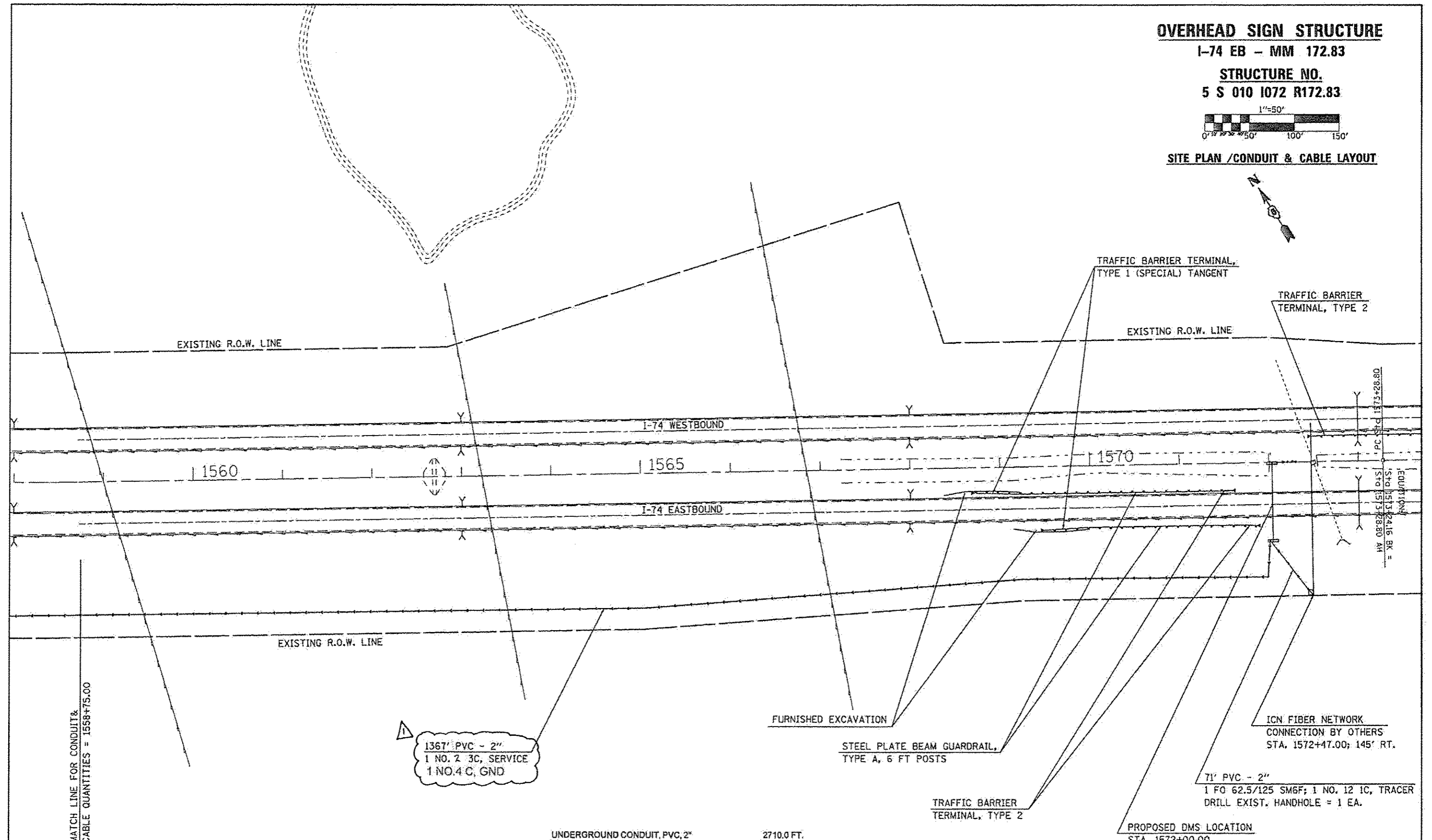
**OVERHEAD SIGN STRUCTURE**

I-74 EB - MM 172.83

**STRUCTURE NO.  
5 S 010 1072 R172.83**



**SITE PLAN / CONDUIT & CABLE LAYOUT**



MATCH LINE FOR CONDUIT & CABLE QUANTITIES = 1558+75.00

1367' PVC - 2"  
1 NO. 2 3C, SERVICE  
1 NO. 4 C, GND

UNDERGROUND CONDUIT, PVC, 2" 2710.0 FT.  
FIBER OPTIC CABLE 62.5/125 SM12F 127.0 FT.  
ELECTRIC CABLE IN CONDUIT, TRACER, NO. 12 1C 71.0 FT.  
ELECTRIC CABLE IN CONDUIT, SERVICE, NO. 2 3C 2651.0 FT.

ELECTRIC CABLE IN CONDUIT, 600V (XLP-TYPE USE) 1/C NO. 4 2651.0 FT

REVISI 9-4-14

FILE NAME *	USER NAME * cborlockjd	DESIGNED -	REVISI -	<b>STATE OF ILLINOIS DEPARTMENT OF TRANSPORTATION</b>	<b>PLAN SHEET FAI - 74 EB / MM 172.83</b>	F.A.I. RTE.	SECTION	COUNTY	TOTAL SHEETS	SHEET NO.	
c:\pwworkspace\cborlockjd\07404631\0778026-shs\plan_58.dgn	PLOT SCALE = 1/8"=50' / 1/4"	DRAWN -	REVISI -			VAR.	FY2014 ITS-1	CHAMPAIGN	71	16	
#MODELNAME*	PLOT DATE = 6/26/2014	CHECKED -	REVISI -			SCALE:	SHEET OF SHEETS	CONTRACT NO. 70A26			
		DATE -	REVISI -				STA. TO STA.	ILLINOIS FED. AID PROJECT			