

GENERAL NOTES

G.N. - 100 ENGLISH UNITS OF MEASUREMENT SHALL GOVERN OVER AND SUPERSEDE ANY METRIC UNITS SHOWN IN THIS CONTRACT. WHERE INCLUDED, METRIC UNITS ARE FOR INFORMATION ONLY.

G.N.-100A ELECTRONIC FILES AND/OR ELECTRONIC SURVEY INFORMATION INCLUDING CADD FILES WILL NOT BE AVAILABLE TO THE CONTRACTOR.

PLAN SHEET GENERAL NOTES

1. CONNECTIONS TO FIBER OPTIC NETWORKS AT LOCATIONS SHOWN IN THE PLANS SHALL BE DONE BY OTHERS. A MINIMUM OF 50' OF FIBER OPTIC CABLE SLACK SHALL BE COILED IN THE HANDHOLE INDICATED FOR FUTURE CONNECTION.
2. ALL PROPOSED HANDHOLES SHALL BE LOCATED BY THE ENGINEER

HIGHWAY STANDARDS

Standard	Description
000001-06	STANDARD SYMBOLS, ABBREVIATIONS AND PATTERNS
001006	DECIMAL OF AN INCH AND OF A FOOT
630001-10	STEEL PLATE BEAM GUARDRAIL
630301-06	SHOULDER WIDENING FOR TYPE 1 (SPECIAL) GUARDRAIL TERMINALS
631011-09	TRAFFIC BARRIER TERMINAL, TYPE 2
635006-03	REFLECTOR AND TERMINAL MARKER PLACEMENT
701006-05	OFF-RD OPERATIONS, 2L, 2W, 15'(4.5 m) TO 24" (600 mm) FROM PAVEMENT EDGE
701101-04	OFF-RD OPERATIONS, MULTILANE, 15'(4.5 m) TO 24" (600 mm) FROM PAVEMENT EDGE
701106-02	OFF-RD OPERATIONS, MULTILANE, MORE THAN 15' (4.5 m) AWAY
701201-04	LANE CLOSURE, 2L, 2W, DAY ONLY, FOR SPEEDS \geq 45 MPH
701400-07	APPROACH TO LANE CLOSURE, FREEWAY / EXPRESSWAY
701401-08	LANE CLOSURE, FREEWAY / EXPRESSWAY
701502-06	URBAN LANE CLOSURE, 2L, 2W, WITH BIDIRECTIONAL TURN LANE
701601-09	URBAN LANE CLOSURE, MULTILANE, 1W OR 2W WITH NONTRAVERSABLE MEDIAN
701701-09	URBAN LANE CLOSURE, MULTILANE INTERSECTION
701901-03	TRAFFIC CONTROL DEVICES
805001-01	ELECTRIC SERVICE INSTALLATION DETAILS
814001-02	HANDHOLES
825021-02	LIGHTING CONTROLLER, BASE MOUNTED, 240V (ONLY ELECTRIC SERVICE INSTALLATION)
830021-02	LIGHT POLE STEEL TENON TOP
836001-02	LIGHT POLE FOUNDATION

INDEX OF SHEETS

1	COVER SHEET
2	INDEX OF SHEETS, HIGHWAY STANDARDS, & GENERAL NOTES
3-7	SUMMARY OF QUANTITIES
8	OVERHEAD SIGN STRUCTURE LOCATION DATA CHART
9-11	STR# 5 S 010 I057 R226.45 - SIGN TRUSS MOUNTING DETAIL AND SITE PLAN
11-13	STR# 5 S 010 I057 L242.78 - SIGN TRUSS MOUNTING DETAIL AND SITE PLAN
14-17	STR# 5 S 010 I074 R172.83 - SIGN TRUSS MOUNTING DETAIL AND SITE PLAN
18-19	STR# 5 S 010 I074 L189.05 - SIGN TRUSS MOUNTING DETAIL AND SITE PLAN
20-21	STR# 5 S 010 I074 L178.29 - SIGN TRUSS MOUNTING DETAIL AND SITE PLAN
22	OVERHEAD SIGN STRUCTURES - GENERAL PLAN & ELEVATION - ALUMINUM TRUSS & STEEL SUPPORTS
23-24	OVERHEAD SIGN STRUCTURES - ALUMINUM TRUSS DETAILS FOR TRUSS TYPES I-A, II-A, III-A
25	OVERHEAD SIGN STRUCTURE DAMPING DEVICE
26-27	OVERHEAD SIGN STRUCTURES - SUPPORT FRAME FOR TYPE III-A ALUMINUM TRUSS
28-29	OVERHEAD SIGN STRUCTURES ALTERNATE ALUMINUM WALKWAY DETAILS FOR DMS
30	OVERHEAD SIGN STRUCTURES ALTERNATE ALUMINUM HANDRAIL DETAIL FOR DMS
31	OVERHEAD SIGN STRUCTURES - DRILLED SHAFT DETAILS
32-34	SOIL BORING LOGS
35	URBAN LOCATION MAP FOR PTZ CAMERA INSTALLATIONS AND FIBER OPTIC CONNECTIONS
36	I-74 & NEIL ST.
37	PROSPECT AVE. & I-74
38-39	LINCOLN AVE. & I-74
40	U. S. 150 & HIGHCROSS RD. (IL. 130)
41	WINDSOR RD. & HIGHCROSS RD. (IL. 130)
42	UNIVERSITY AVE. (IL. 130 SPUR) & I-74
43	UNIVERSITY AVE. & LINCOLN AVE.
44	SPRINGFIELD AVE. & WRIGHT ST.
45	SPRINGFIELD AVE. - 3RD ST. TO 4TH ST.
46	SPRINGFIELD AVE. & NEIL ST.
47	NEIL ST. & KIRBY AVE.
48	MARKET ST. & EISNER ST. - CHAMPAIGN STORAGE
49	MARKET ST. & I-57
50	I-57 0.5 MI. NORTH OF MARKET ST. - LEVERETTE STORAGE
51-52	I-57 & I-74
53	I-57 & I-72
54	I-57 & CURTIS RD.
55	MATTIS AVE. & CHURCH ST.
56	MATTIS AVE. & BRADLEY AVE.
57	MATTIS AVE. & BLOOMINGTON AVE.
58	SPRINGFIELD AVE. & DUNCAN RD.
59	SPRINGFIELD AVE. & STALEY RD.
60	PROSPECT AVE. & BRADLEY AVE.
61	PROSPECT AVE. & UNIVERSITY AVE.
62	NEIL ST. & GREEN ST.
63	NEIL ST. & WINDSOR RD.
64	U. S. 45 (DUNLAP AVE.) & CURTIS RD.
65	U. S. 45 (DUNLAP AVE.) & CHURCH ST.
66	UNIVERSITY AVE. & CUNNINGHAM AVE.
67	I-74 & CUNNINGHAM AVE. (U.S. 45), NORTH RAMPS, SOUTH RAMPS
68	U.S. 45 (CUNNINGHAM AVE.) - PERKINS RD. TO ILLINI AIRPORT DR.
69	SCHEDULE OF FIBER TERMINATIONS, TERMINAL ENCLOSURES AND ETHERNET SWITCHES
70	SCHEDULES (GENERAL)
71	CAMERA MOUNT ASSEMBLY DETAILS

▲ REVISED 9-4-14

FILE NAME =	USER NAME = ceerlookjd	DESIGNED -	REVISED -	STATE OF ILLINOIS DEPARTMENT OF TRANSPORTATION	INDEX OF SHEETS, HIGHWAY STANDARDS & GENERAL NOTES	F.A.P. RTE.	SECTION	COUNTY	TOTAL SHEETS	SHEET NO.	
01\pe_work\pedit\ceerlookjd\0340463\	Z ceerlook.plans.dgn	DRAWN -	REVISED -			VAR.	FY2011 INTERCONNECT	Champaign	71	2	
	PLOT SCALE = 48,0000' / in.	CHECKED -	REVISED -			SCALE: SHEET NO. OF SHEETS STA. TO STA.					
	PLOT DATE = 6/26/2014	DATE -	REVISED -			ILLINOIS FED. AID PROJECT					

CONTRACT NO. 70A26

SUMMARY OF QUANTITIES

CODE NO	ITEM	UNIT	TOTAL QUANTITY	LOCATION OF WORK:			
				CHAMPAIGN CO. VARIOUS ROUTES CHAMPAIGN URBANA 100% STATE URBAN 0021	CHAMPAIGN CO. VARIOUS ROUTES CHAMPAIGN URBANA 100% STATE RURAL 0021	CHAMPAIGN CO. VARIOUS ROUTES CHAMPAIGN URBANA 90% FED 10% STATE URBAN 0021	CHAMPAIGN CO. VARIOUS ROUTES CHAMPAIGN URBANA 90% FED 10% STATE RURAL 0021
CONSTRUCTION TYPE CODE:				QUANTITY	QUANTITY	QUANTITY	QUANTITY
70102622	TRAFFIC CONTROL AND PROTECTION, STANDARD 701502	L SUM	1.0	.6		.4	
70102630	TRAFFIC CONTROL AND PROTECTION, STANDARD 701601	L SUM	1.0	.6		.4	
70102635	TRAFFIC CONTROL AND PROTECTION, STANDARD 701701	L SUM	1.0	.6		.4	
70200100	NIGHTTIME WORK ZONE LIGHTING	L SUM	1.0		.6		.4
73300300	OVERHEAD SIGN STRUCTURE - SPAN, TYPE III-A (5'-0" X 7'-0")	FOOT	371.0		221.0		150.0
73301810	OVERHEAD SIGN STRUCTURE WALKWAY, TYPE A	FOOT	100.0		60.0		40.0
73400200	DRILLED SHAFT CONCRETE FOUNDATIONS	CU YD	110.5		65.7		44.8
78200410	GUARDRAIL MARKERS, TYPE A	EACH	56.0		33.0		23.0
78201000	TERMINAL MARKER - DIRECT APPLIED	EACH	27.0		16.0		11.0
80500100	SERVICE INSTALLATION, TYPE A	EACH	5.0		3.0		2.0
81028350	UNDERGROUND CONDUIT, PVC, 2" DIA.	FOOT	15,406.0	5,846.0	3,321.0	3,979.0	2,260.0
81300830	JUNCTION BOX, STAINLESS STEEL, ATTACHED TO STRUCTURE, 18" X 18" X 8"	EACH	5.0	3.0		2.0	
81400100	HANDHOLE	EACH	19.0	10.0	2.0	6.0	1.0
81500130	GULFBOX JUNCTION REMOVAL	EACH	1.0	.6		.4	
81702120	ELECTRIC CABLE IN CONDUIT, 600V (XLP-TYPE USE) 1/C NO. 8	FOOT	1526.0		908.0		618.0
81702140	ELECTRIC CABLE IN CONDUIT, 600V (XLP-TYPE USE) 1/C NO. 4	FOOT	1526.0		908.0		618.0
81702150	ELECTRIC CABLE IN CONDUIT, 600V (XLP-TYPE USE) 1/C NO. 2	FOOT	7953.0		4731.0		3222.0

△

△ REVISED 9-4-14

GUARDRAIL SCHEDULE

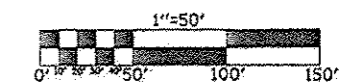
LOCATION	STATION	TO	STATION	63000001 STEEL PLATE BEAM GUARDRAIL TYPE A 6 FT POSTS (FOOT)	63100045 TRAFFIC BARRIER TERMINAL TYPE 2 (EACH)	63100167 TRAFFIC BARRIER TERMINAL TYPE 1(SPECIAL) TANGENT (EACH)	78200410 GUARDRAIL MARKER TYPE A (EACH)	78201000 TERMINAL MARKER DIRECT APPLIED (EACH)
N.B. P.L. SHLDR	469+24.00		469+74.00			1.0		1.0
N.B. P.L. SHLDR	469+74.00		471+99.00	225.0			4.0	
N.B. P.L. SHLDR	471+99.00		472+11.50		1.0			1.0
S.B. P.L. SHLDR	472+89.00		473+01.50		1.0			1.0
S.B. P.L. SHLDR	473+01.50		475+26.50	225.0			4.0	
S.B. P.L. SHLDR	475+26.50		475+76.50			1.0		1.0
SUB-TOTAL =				450.0	2.0	2.0	8.0	4.0
				FOOT	EACH	EACH	EACH	EACH

OVERHEAD SIGN STRUCTURE

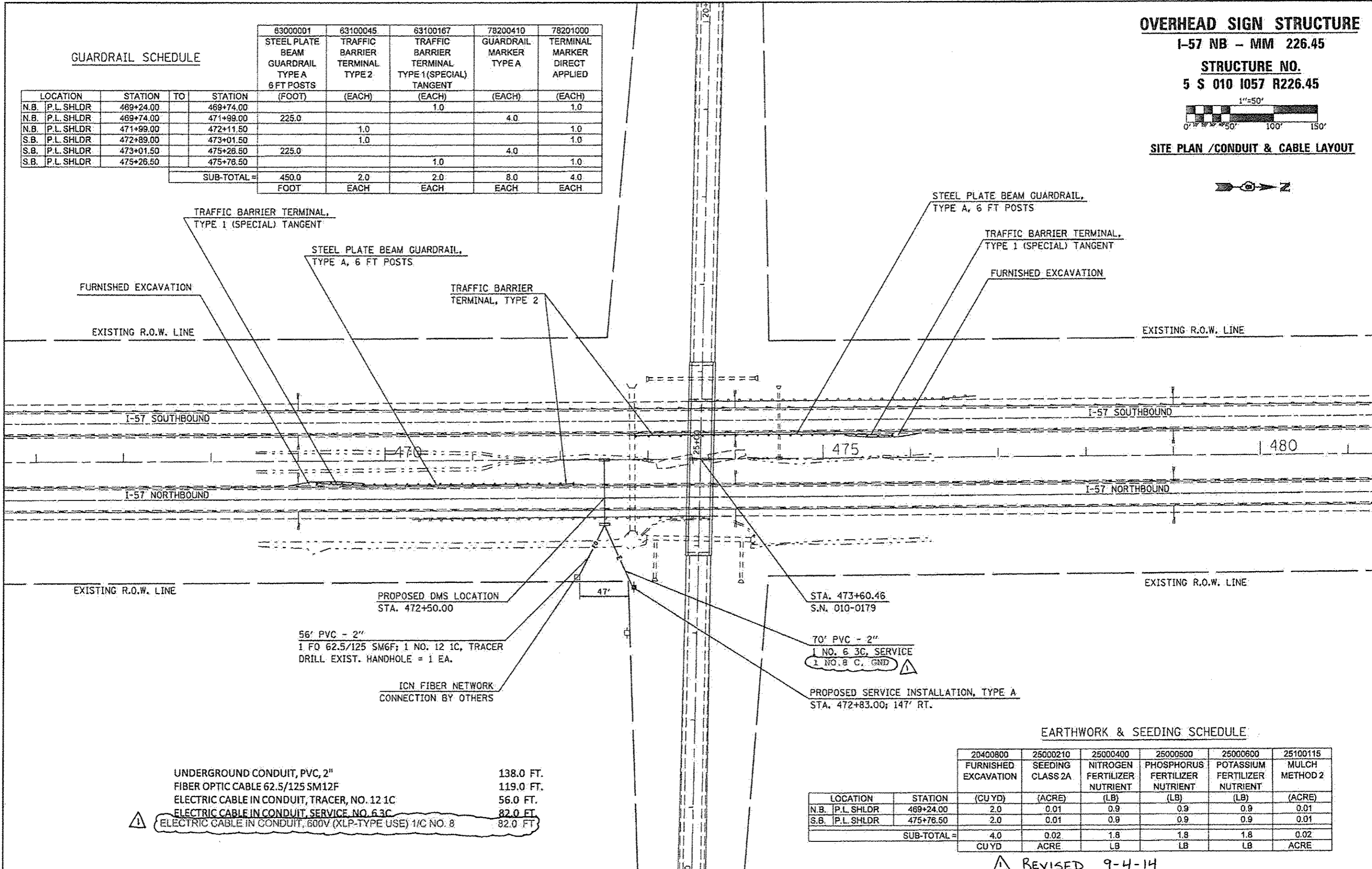
I-57 NB - MM 226.45

STRUCTURE NO.

5 S 010 1057 R226.45



SITE PLAN / CONDUIT & CABLE LAYOUT



FURNISHED EXCAVATION

EXISTING R.O.W. LINE

I-57 SOUTHBOUND

I-57 NORTHBOUND

EXISTING R.O.W. LINE

PROPOSED DMS LOCATION
STA. 472+50.00

56' PVC - 2"
1 FO 62.5/125 SM6F; 1 NO. 12 1C, TRACER
DRILL EXIST. HANDHOLE = 1 EA.

ICN FIBER NETWORK
CONNECTION BY OTHERS

STA. 473+60.46
S.N. 010-0179

70' PVC - 2"
1 NO. 6 3C, SERVICE
1 NO. 8 C, GND

PROPOSED SERVICE INSTALLATION, TYPE A
STA. 472+83.00; 147' RT.

EXISTING R.O.W. LINE

I-57 SOUTHBOUND

I-57 NORTHBOUND

EXISTING R.O.W. LINE

UNDERGROUND CONDUIT, PVC, 2" 138.0 FT.
FIBER OPTIC CABLE 62.5/125 SM12F 119.0 FT.
ELECTRIC CABLE IN CONDUIT, TRACER, NO. 12 1C 56.0 FT.
ELECTRIC CABLE IN CONDUIT, SERVICE, NO. 6 3C 82.0 FT.
ELECTRIC CABLE IN CONDUIT, 600V (XLP-TYPE USE) 1/C NO. 8 82.0 FT.

EARTHWORK & SEEDING SCHEDULE

LOCATION	STATION	(CU YD)	(ACRE)	(LB)	(LB)	(LB)	(ACRE)
N.B. P.L. SHLDR	469+24.00	2.0	0.01	0.9	0.9	0.9	0.01
S.B. P.L. SHLDR	475+76.50	2.0	0.01	0.9	0.9	0.9	0.01
SUB-TOTAL =		4.0	0.02	1.8	1.8	1.8	0.02
		CU YD	ACRE	LB	LB	LB	ACRE

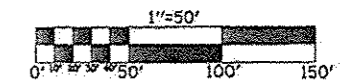
REVISD 9-4-14

OVERHEAD SIGN STRUCTURE

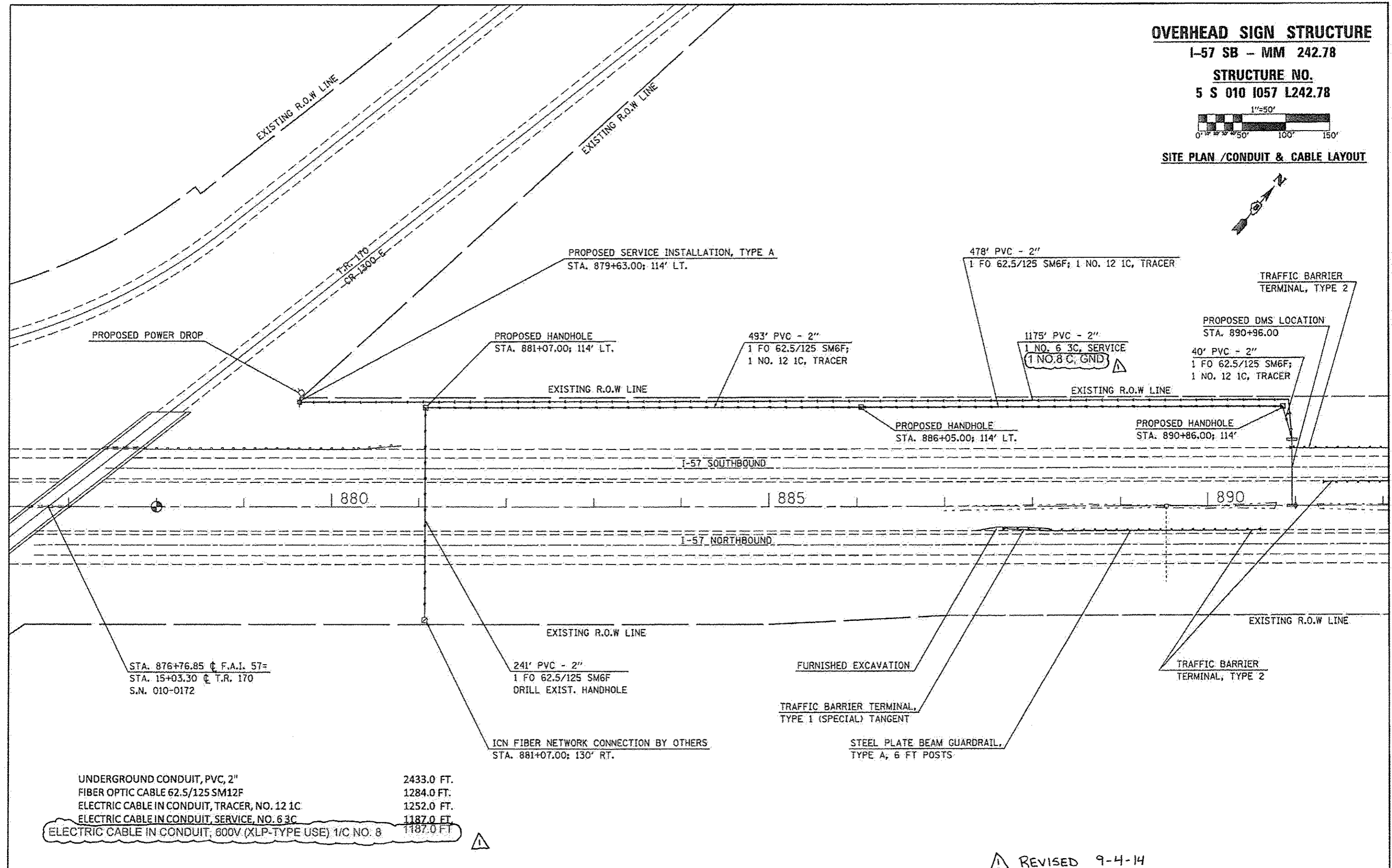
I-57 SB - MM 242.78

STRUCTURE NO.

5 S 010 1057 L242.78



SITE PLAN / CONDUIT & CABLE LAYOUT



UNDERGROUND CONDUIT, PVC, 2"	2433.0 FT.
FIBER OPTIC CABLE 62.5/125 SM12F	1284.0 FT.
ELECTRIC CABLE IN CONDUIT, TRACER, NO. 12 1C	1252.0 FT.
ELECTRIC CABLE IN CONDUIT, SERVICE, NO. 6 3C	1187.0 FT.
ELECTRIC CABLE IN CONDUIT, 600V (XLP-TYPE USE) 1/C NO. 8	1187.0 FT.

REVISION 9-4-14

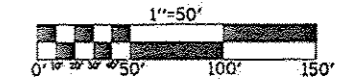
FILE NAME #	USER NAME #	DESIGNED -	REVISED -	STATE OF ILLINOIS DEPARTMENT OF TRANSPORTATION	PLAN SHEET FAI - 57 SB / MM 242.78	F.A.I. RTE.	SECTION	COUNTY	TOTAL SHEETS	SHEET NO.	
c:\pwork\pvidot\csoorlockj\d0340463\037826-shc-plan_08.dgn	csoorlockj	DRAWN -	REVISED -			VAR.	FY2014 ITS-I	CHAMPAIGN	71	12	
PLOT SCALE #	PLOT DATE #	CHECKED -	REVISED -			SCALE:	SHEET	OF	SHEETS	STA.	TO STA.
1/8" = 1'	6/26/2014	DATE -	REVISED -								
							CONTRACT NO. 70A26		ILLINOIS FED. AID PROJECT		

OVERHEAD SIGN STRUCTURE

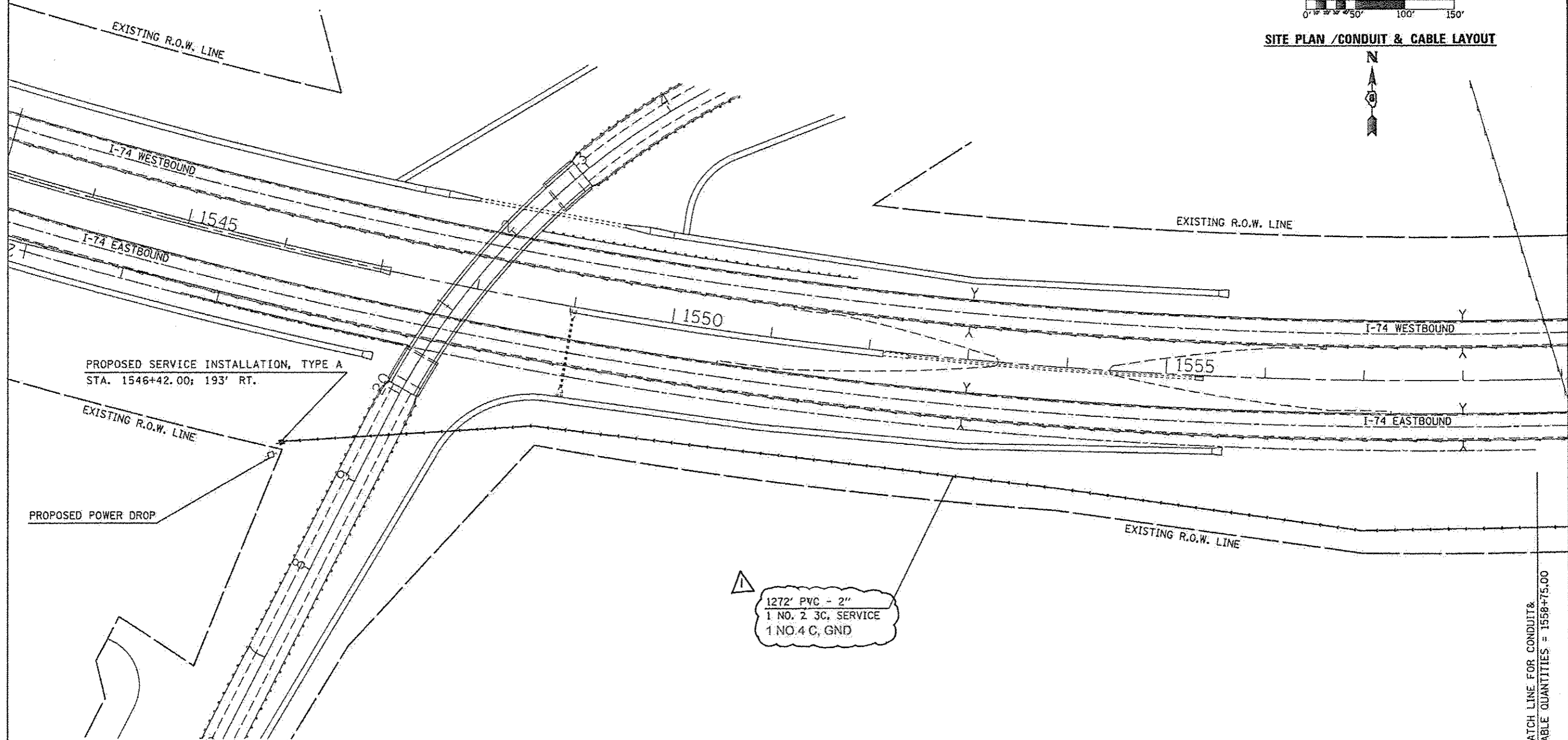
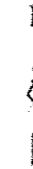
I-74 EB - MM 172.83

STRUCTURE NO.

5 S 010 1072 R172.83



SITE PLAN / CONDUIT & CABLE LAYOUT



MATCH LINE FOR CONDUIT & CABLE QUANTITIES = 1558+75.00

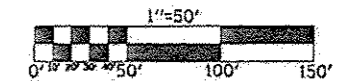
△ REVISED 9-4-14

FILE NAME :	USER NAME :	DESIGNED :	REVISOR :	STATE OF ILLINOIS DEPARTMENT OF TRANSPORTATION	PLAN SHEET		F.A.I. RTE.	SECTION	COUNTY	TOTAL SHEETS	SHEET NO.
ai\pw...work\p...dos\l...er\lock_jd\09348463\072026-shc-plan_09.dgn	72026-shc-plan_09.dgn	DRAWN :	REVISOR :		FAI - 74 EB / MM 172.83		VAR.	FY2014 ITS-1	CHAMPAIGN	71	15
		CHECKED :	REVISOR :		SCALE:	SHEET	OF	SHEETS	STA.	TO STA.	CONTRACT NO. 70A26
MODEL NAME :	PLOT DATE :	DATE :	REVISOR :		ILLINOIS FED. AID PROJECT						

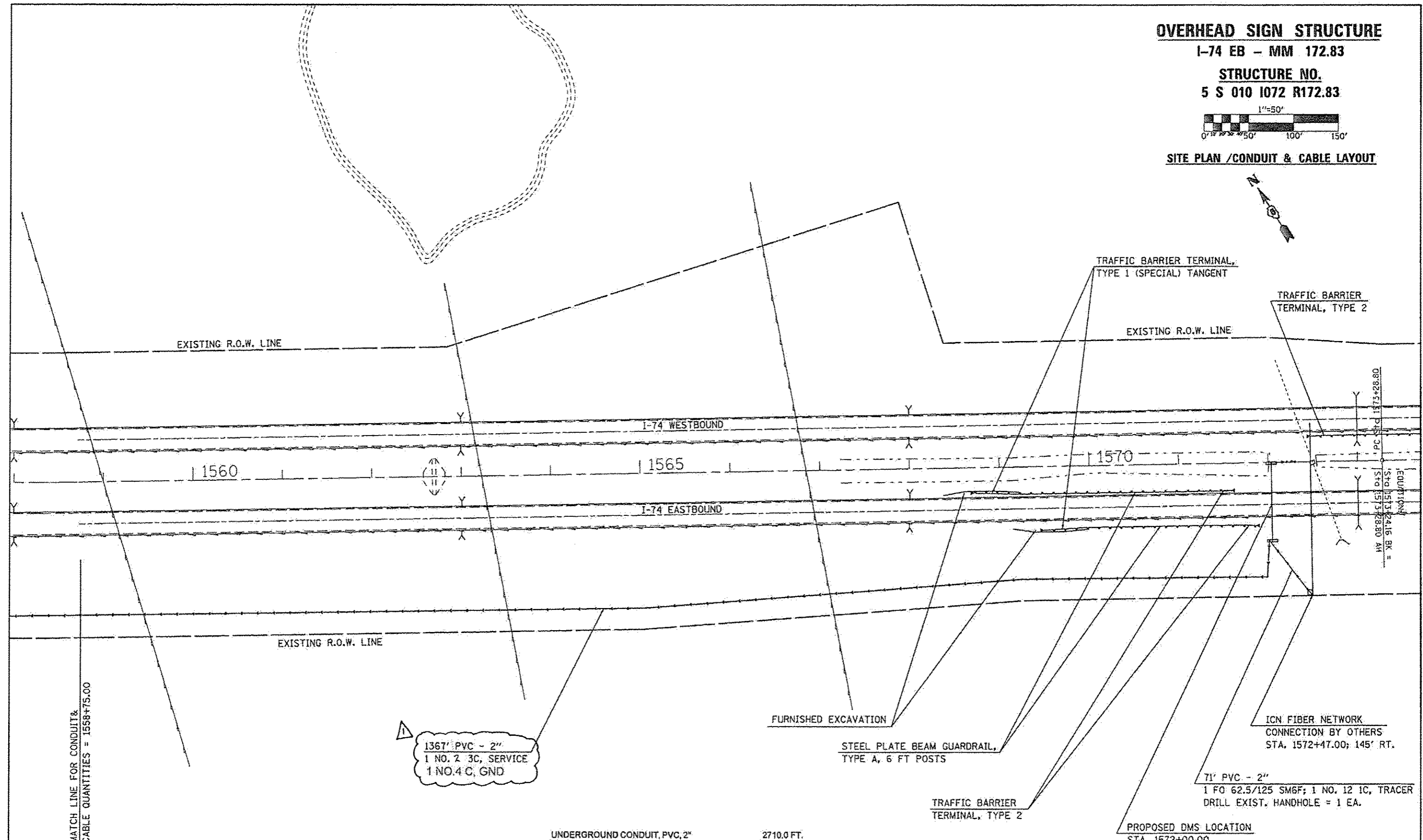
OVERHEAD SIGN STRUCTURE

I-74 EB - MM 172.83

STRUCTURE NO.
5 S 010 1072 R172.83



SITE PLAN / CONDUIT & CABLE LAYOUT



MATCH LINE FOR CONDUIT & CABLE QUANTITIES = 1558+75.00

1367' PVC - 2"
1 NO. 2 3C, SERVICE
1 NO. 4 C, GND

FURNISHED EXCAVATION
STEEL PLATE BEAM GUARDRAIL,
TYPE A, 6 FT POSTS

ICN FIBER NETWORK
CONNECTION BY OTHERS
STA. 1572+47.00; 145' RT.

71' PVC - 2"
1 FO 62.5/125 SM6F; 1 NO. 12 1C, TRACER
DRILL EXIST. HANDHOLE = 1 EA.

PROPOSED DMS LOCATION
STA. 1572+00.00

UNDERGROUND CONDUIT, PVC, 2" 2710.0 FT.
FIBER OPTIC CABLE 62.5/125 SM12F 127.0 FT.
ELECTRIC CABLE IN CONDUIT, TRACER, NO. 12 1C 71.0 FT.
ELECTRIC CABLE IN CONDUIT, SERVICE, NO. 2 3C 2651.0 FT.

ELECTRIC CABLE IN CONDUIT, 600V (XLP-TYPE USE) 1/C NO. 4 2651.0 FT

REVISD 9-4-14

FILE NAME *	USER NAME * cborlockjd	DESIGNED -	REVISD -	STATE OF ILLINOIS DEPARTMENT OF TRANSPORTATION	PLAN SHEET FAI - 74 EB / MM 172.83	F.A.I. RTE.	SECTION	COUNTY	TOTAL SHEETS	SHEET NO.	
c:\pwworkspace\cborlockjd\0240463\0278026-shs\plan_58.dgn	PLOT SCALE = 100.0000' / 1"	DRAWN -	REVISD -			VAR.	FY2014 ITS-1	CHAMPAIGN	71	16	
#MODELNAME*	PLOT DATE = 6/26/2014	CHECKED -	REVISD -			SCALE:	SHEET OF SHEETS	STA. TO STA.	ILLINOIS FED. AID PROJECT		
		DATE -	REVISD -						CONTRACT NO. 70A26		

GUARDRAIL SCHEDULE

LOCATION	STATION	TO	STATION	63000001 STEEL PLATE BEAM GUARDRAIL TYPE A 8 FT POSTS (FOOT)	63100045 TRAFFIC BARRIER TERMINAL TYPE 2 (EACH)	63100167 TRAFFIC BARRIER TERMINAL TYPE 1(SPECIAL) TANGENT (EACH)	78200410 GUARDRAIL MARKER TYPE A (EACH)	78201000 TERMINAL MARKER DIRECT APPLIED (EACH)
E.B. P.L. SHLDR	591+40.00		591+90.00			1.0		1.0
E.B. P.L. SHLDR	591+90.00		592+90.00	100.0			4.0	
E.B. P.L. SHLDR	592+90.00		593+02.50		1.0			1.0
W.B. D.L. SHLDR	593+35.50		593+48.00		1.0			1.0
W.B. D.L. SHLDR	593+48.00		595+23.00	175.0			4.0	
W.B. D.L. SHLDR	595+23.00		595+73.00			1.0		1.0
W.B. P.L. SHLDR	593+19.50		593+32.00		1.0			1.0
W.B. P.L. SHLDR	593+32.00		595+32.00	200.0			4.0	
W.B. P.L. SHLDR	595+32.00		595+82.00			1.0		1.0
SUB-TOTAL =				475.0	3.0	3.0	12.0	6.0
				FOOT	EACH	EACH	EACH	EACH

OVERHEAD SIGN STRUCTURE

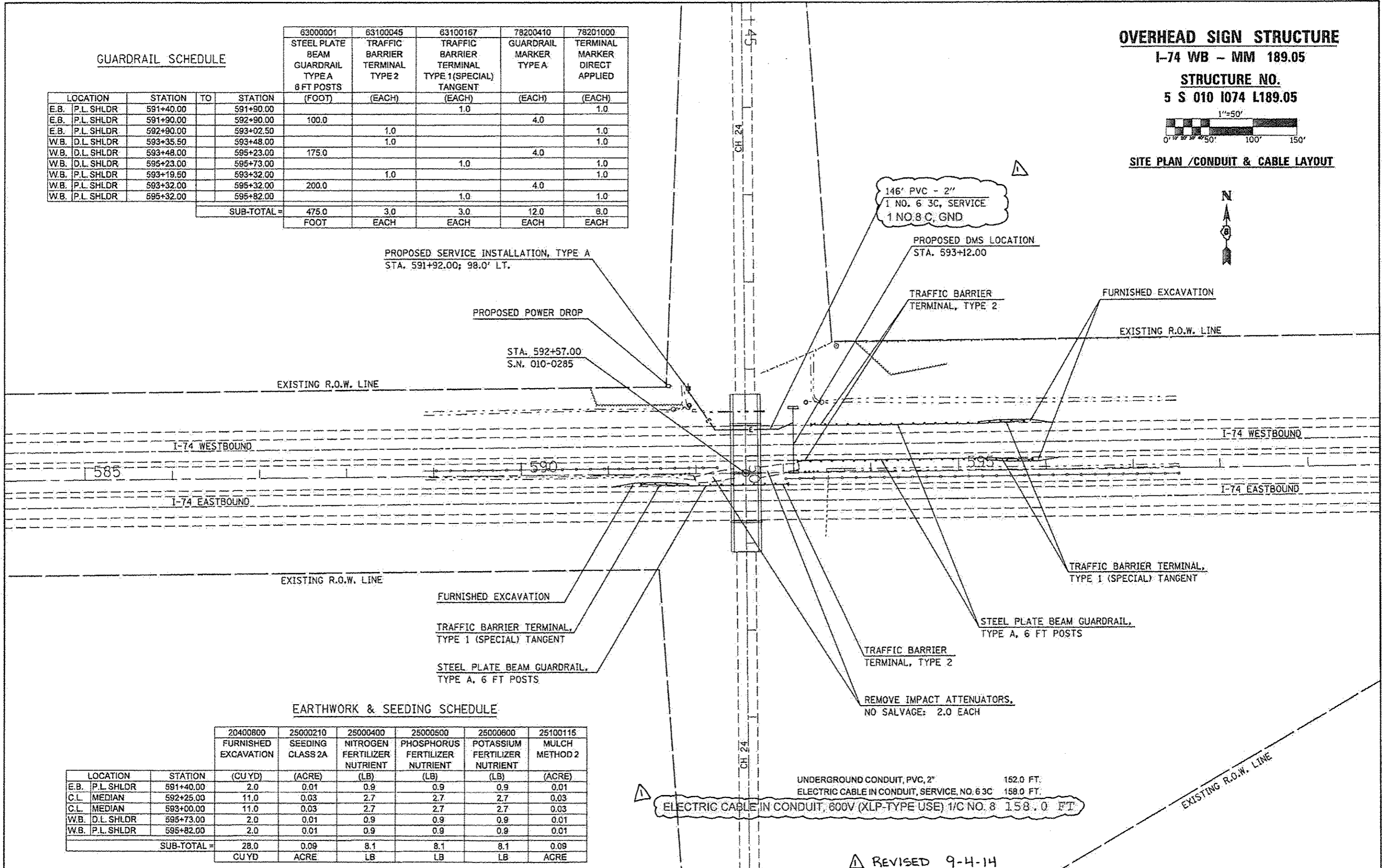
I-74 WB - MM 189.05

STRUCTURE NO.

5 S 010 1074 L189.05



SITE PLAN / CONDUIT & CABLE LAYOUT



PROPOSED SERVICE INSTALLATION, TYPE A
STA. 591+92.00; 98.0' LT.

PROPOSED POWER DROP

STA. 592+57.00
S.N. 010-0285

146' PVC - 2"
1 NO. 6 3C, SERVICE
1 NO. 8 C, GND

PROPOSED DMS LOCATION
STA. 593+12.00

TRAFFIC BARRIER
TERMINAL, TYPE 2

FURNISHED EXCAVATION

EXISTING R.O.W. LINE

I-74 WESTBOUND

I-74 WESTBOUND

585

590

595

I-74 EASTBOUND

I-74 EASTBOUND

EXISTING R.O.W. LINE

FURNISHED EXCAVATION

TRAFFIC BARRIER TERMINAL,
TYPE 1 (SPECIAL) TANGENT

STEEL PLATE BEAM GUARDRAIL,
TYPE A, 6 FT POSTS

TRAFFIC BARRIER TERMINAL,
TYPE 1 (SPECIAL) TANGENT

STEEL PLATE BEAM GUARDRAIL,
TYPE A, 6 FT POSTS

TRAFFIC BARRIER
TERMINAL, TYPE 2

REMOVE IMPACT ATTENUATORS,
NO SALVAGE: 2.0 EACH

EARTHWORK & SEEDING SCHEDULE

LOCATION	STATION	20400800 FURNISHED EXCAVATION (CU YD)	25000210 SEEDING CLASS 2A (ACRE)	25000400 NITROGEN FERTILIZER NUTRIENT (LB)	25000500 PHOSPHORUS FERTILIZER NUTRIENT (LB)	25000600 POTASSIUM FERTILIZER NUTRIENT (LB)	25100115 MULCH METHOD 2 (ACRE)
E.B. P.L. SHLDR	591+40.00	2.0	0.01	0.9	0.9	0.9	0.01
C.L. MEDIAN	592+25.00	11.0	0.03	2.7	2.7	2.7	0.03
C.L. MEDIAN	593+00.00	11.0	0.03	2.7	2.7	2.7	0.03
W.B. D.L. SHLDR	595+73.00	2.0	0.01	0.9	0.9	0.9	0.01
W.B. P.L. SHLDR	595+82.00	2.0	0.01	0.9	0.9	0.9	0.01
SUB-TOTAL =		28.0	0.09	8.1	8.1	8.1	0.09
		CUYD	ACRE	LB	LB	LB	ACRE

ELECTRIC CABLE IN CONDUIT, 600V (XLP-TYPE USE) 1/C NO. 8 158.0 FT

REVISD 9-4-14

GUARDRAIL SCHEDULE

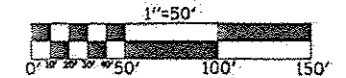
LOCATION	STATION	TO	STATION	STEEL PLATE BEAM GUARDRAIL TYPE A 6 FT POSTS (FOOT)	TRAFFIC BARRIER TERMINAL TYPE 2 (EACH)	TRAFFIC BARRIER TERMINAL TYPE 1(SPECIAL) TANGENT (EACH)	GUARDRAIL MARKER TYPE A (EACH)	TERMINAL MARKER DIRECT APPLIED (EACH)	GUARDRAIL REMOVAL (FOOT)
E.B. P.L. SHLDR	1775+18.00		1775+68.00			1.0		1.0	
E.B. P.L. SHLDR	1775+68.00		1777+93.00	225.0			4.0		
E.B. P.L. SHLDR	1777+93.00		1778+05.50		1.0			1.0	
E.B. D.L. SHLDR	1775+97.00		1776+47.00			1.0		1.0	
E.B. D.L. SHLDR	1776+47.00		1777+59.50	112.5			4.0		
E.B. D.L. SHLDR	1777+07.00		1777+57.00						50.0
W.B. P.L. SHLDR	1778+83.50		1778+86.00		1.0			1.0	
W.B. P.L. SHLDR	1778+96.00		1781+08.50	212.5			4.0		
W.B. P.L. SHLDR	1781+08.50		1781+58.50			1.0		1.0	
SUB-TOTAL =				550.0	2.0	3.0	12.0	5.0	50.0
				FOOT	EACH	EACH	EACH	EACH	FOOT

OVERHEAD SIGN STRUCTURE

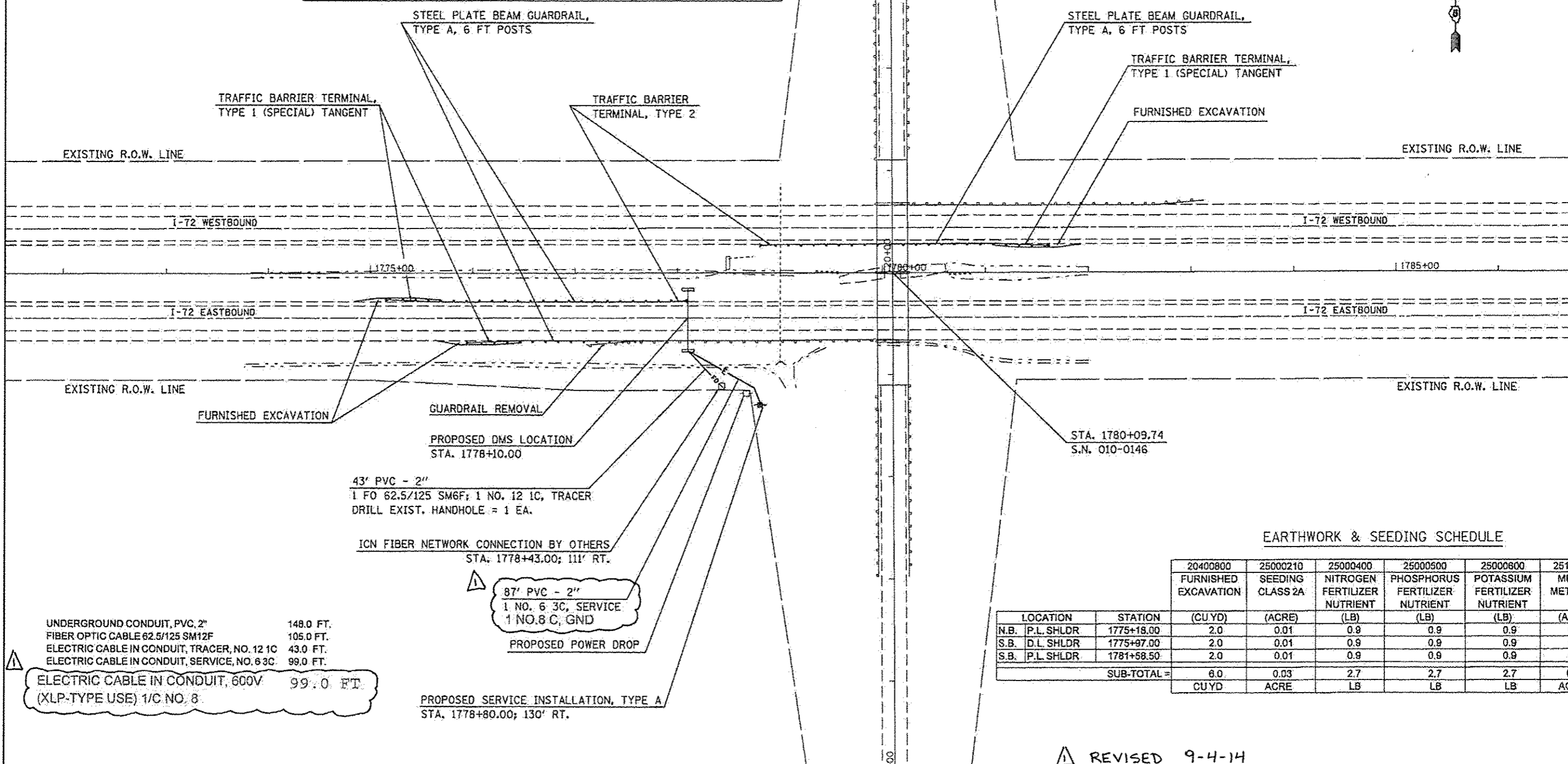
I-72 EB - MM 178.29

STRUCTURE NO.

5 S 010 1072 R178.29



SITE PLAN /CONDUIT & CABLE LAYOUT



EARTHWORK & SEEDING SCHEDULE

LOCATION	STATION	20400800 FURNISHED EXCAVATION (CU YD)	25000210 SEEDING CLASS 2A (ACRE)	25000400 NITROGEN FERTILIZER NUTRIENT (LB)	25000500 PHOSPHORUS FERTILIZER NUTRIENT (LB)	25000800 POTASSIUM FERTILIZER NUTRIENT (LB)	25100115 MULCH METHOD 2 (ACRE)
N.B. P.L. SHLDR	1775+18.00	2.0	0.01	0.9	0.9	0.9	0.01
S.B. D.L. SHLDR	1775+97.00	2.0	0.01	0.9	0.9	0.9	0.01
S.B. P.L. SHLDR	1781+58.50	2.0	0.01	0.9	0.9	0.9	0.01
SUB-TOTAL =		6.0	0.03	2.7	2.7	2.7	0.03
		CUYD	ACRE	LB	LB	LB	ACRE

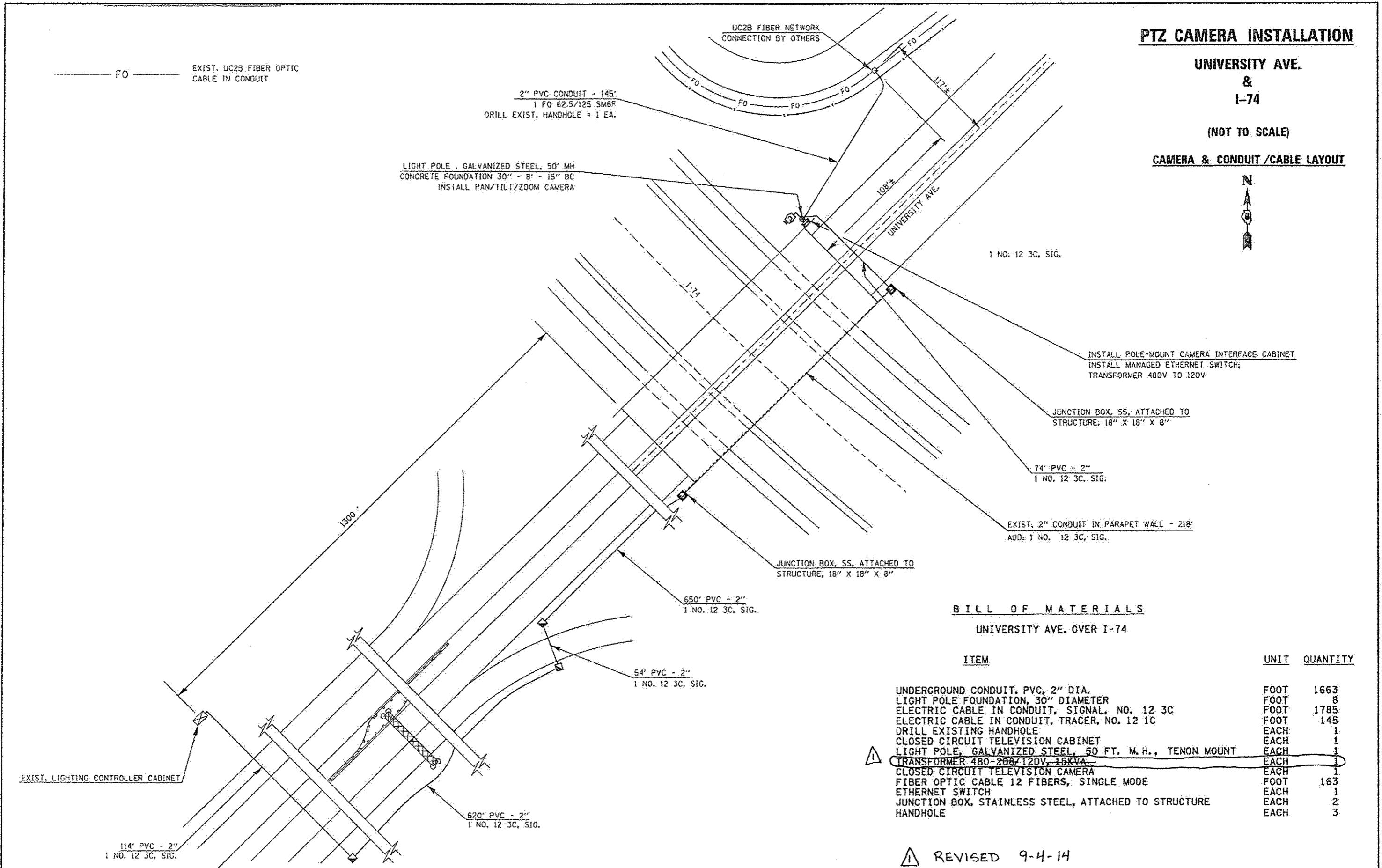
REVISI 9-4-14

PTZ CAMERA INSTALLATION

**UNIVERSITY AVE.
&
I-74**

(NOT TO SCALE)

CAMERA & CONDUIT /CABLE LAYOUT



BILL OF MATERIALS

UNIVERSITY AVE. OVER I-74

ITEM	UNIT	QUANTITY
UNDERGROUND CONDUIT, PVC, 2" DIA.	FOOT	1663
LIGHT POLE FOUNDATION, 30" DIAMETER	FOOT	8
ELECTRIC CABLE IN CONDUIT, SIGNAL, NO. 12 3C	FOOT	1785
ELECTRIC CABLE IN CONDUIT, TRACER, NO. 12 1C	FOOT	145
DRILL EXISTING HANDHOLE	EACH	1
CLOSED CIRCUIT TELEVISION CABINET	EACH	1
LIGHT POLE, GALVANIZED STEEL, 50 FT. M.H., TENON MOUNT	EACH	1
TRANSFORMER 480-208/120V-15KVA	EACH	1
CLOSED CIRCUIT TELEVISION CAMERA	EACH	1
FIBER OPTIC CABLE 12 FIBERS, SINGLE MODE	FOOT	163
ETHERNET SWITCH	EACH	1
JUNCTION BOX, STAINLESS STEEL, ATTACHED TO STRUCTURE	EACH	2
HANDHOLE	EACH	3

REVISD 9-4-14

FILE NAME >	USER NAME : ccarlook.jd	DESIGNED -	REVISED -	STATE OF ILLINOIS DEPARTMENT OF TRANSPORTATION	F.A.P. R/E.	SECTION	COUNTY	TOTAL SHEETS	SHEET NO.
or\p\work\p\idos\ccarlook.jd\8248463.VP	Z camera plans.dgn	DRAWN -	REVISED -		VAR.	FY2014 ITS-1	CHAMPAIGN	71	42
PLOT SCALE x 1/8"=1'-0"		CHECKED -	REVISED -		SCALE:				
#MODELNAME#	PLOT DATE x 6/26/2014	DATE -	REVISED -		SHEET OF SHEETS STA. TO STA.				CONTRACT NO: 70A26
						ILLINOIS FED. AID PROJECT			

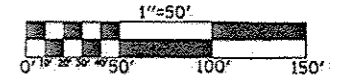
BILL OF MATERIALS

I-57 & I-74

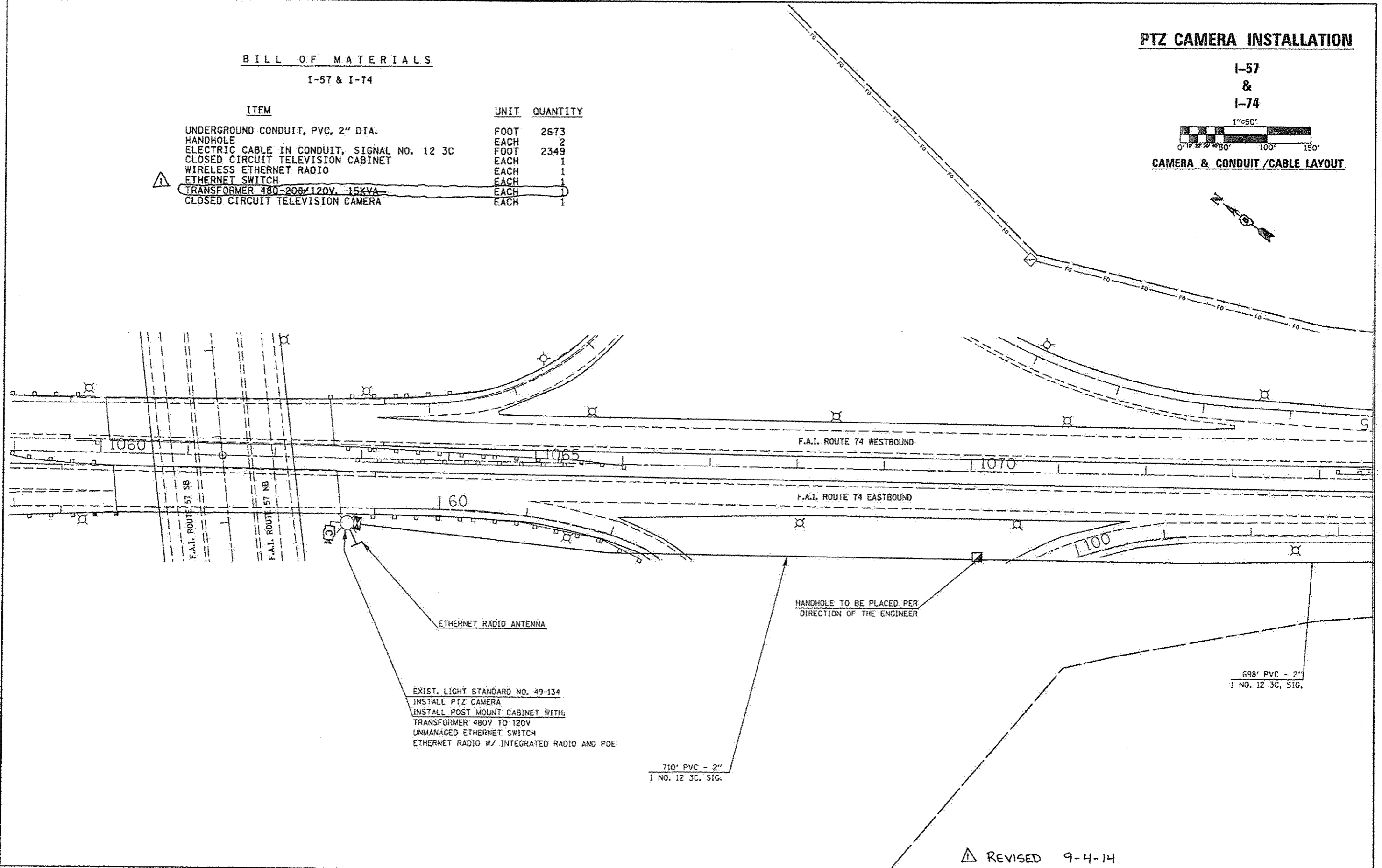
ITEM	UNIT	QUANTITY
UNDERGROUND CONDUIT, PVC, 2" DIA.	FOOT	2673
HANDHOLE	EACH	2
ELECTRIC CABLE IN CONDUIT, SIGNAL NO. 12 3C	FOOT	2349
CLOSED CIRCUIT TELEVISION CABINET	EACH	1
WIRELESS ETHERNET RADIO	EACH	1
ETHERNET SWITCH	EACH	1
TRANSFORMER 480-208/120V, 15KVA	EACH	1
CLOSED CIRCUIT TELEVISION CAMERA	EACH	1

PTZ CAMERA INSTALLATION

I-57
&
I-74



CAMERA & CONDUIT /CABLE LAYOUT



△ REVISED 9-4-14

FILE NAME *	USER NAME * cearlook_jd	DESIGNED -	REVISED -	STATE OF ILLINOIS DEPARTMENT OF TRANSPORTATION	F.A.P. RTE.	SECTION	COUNTY	TOTAL SHEETS	SHEET NO.
et:\p\work\p\idat\cearlook_jd\03142453\PTZ camera plan.dgn	Z camera plan.dgn	DRAWN -	REVISED -		VAR.	FY2014 ITS-1	CHAMPAIGN	71	51
PLOT SCALE = 1/8"=80'54" / 1"=100'	PLOT DATE = 6/26/2014	CHECKED -	REVISED -		CONTRACT NO. 70A26				
MODEL NAME #		DATE	REVISED -		ILLINOIS FED. AID PROJECT				

