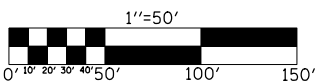


OVERHEAD SIGN STRUCTURE

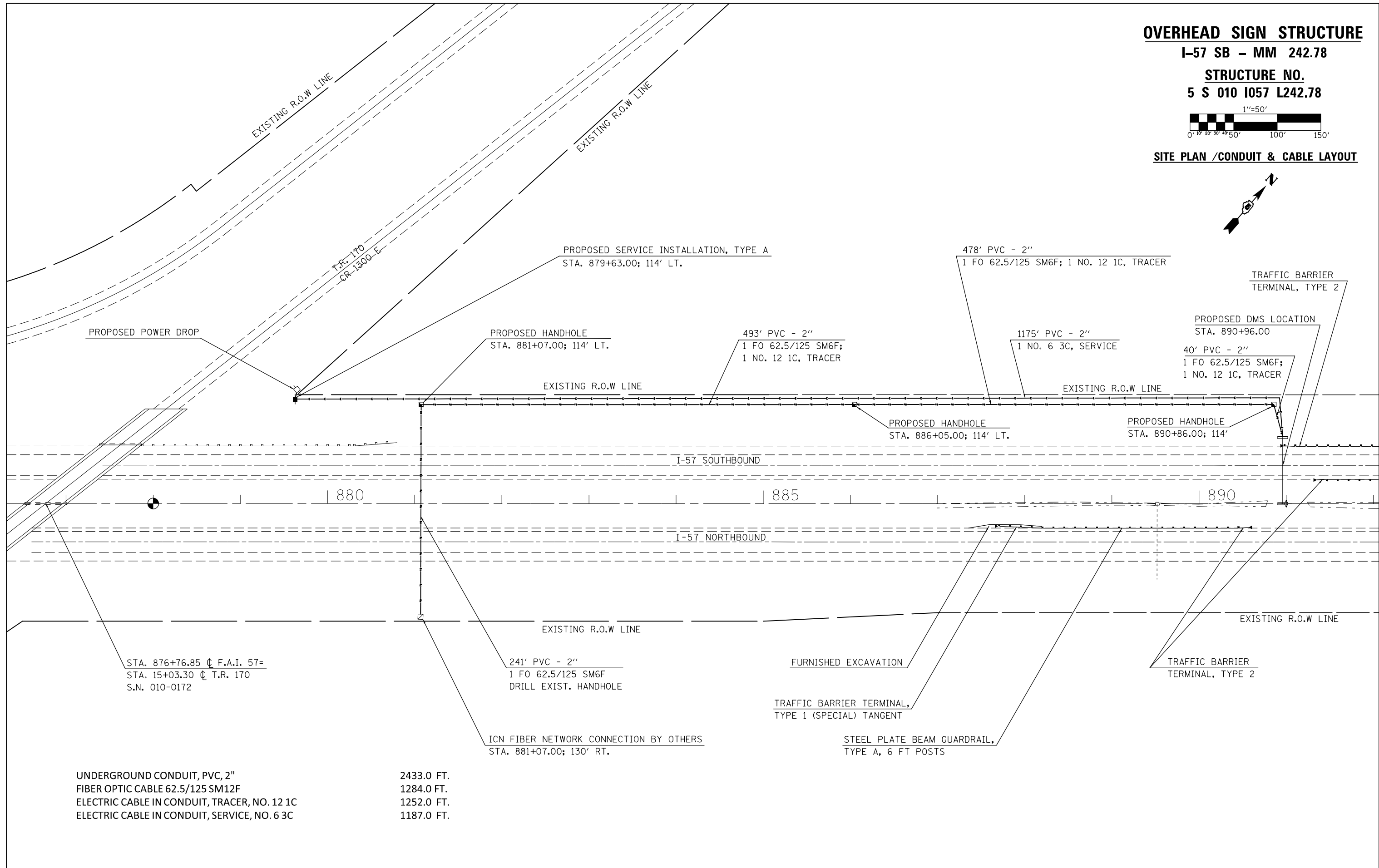
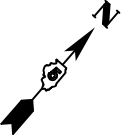
I-57 SB - MM 242.78

STRUCTURE NO.

5 S 010 1057 L242.78



SITE PLAN / CONDUIT & CABLE LAYOUT



UNDERGROUND CONDUIT, PVC, 2"	2433.0 FT.
FIBER OPTIC CABLE 62.5/125 SM12F	1284.0 FT.
ELECTRIC CABLE IN CONDUIT, TRACER, NO. 12 1C	1252.0 FT.
ELECTRIC CABLE IN CONDUIT, SERVICE, NO. 6 3C	1187.0 FT.

FILE NAME =	USER NAME = ceerlockjd	DESIGNED -	REVISED -
c:\pwork\pwork\ceerlockjd\0340463\0570A26-sht-plan_50.dgn		DRAWN -	REVISED -
	PLOT SCALE = 100.0000' / in.	CHECKED -	REVISED -
\$MODELNAME\$	PLOT DATE = 6/26/2014	DATE -	REVISED -

**STATE OF ILLINOIS
DEPARTMENT OF TRANSPORTATION**

**PLAN SHEET
FAI - 57 SB / MM 242.78**

SCALE: SHEET OF SHEETS STA. TO STA.

F.A.I. RTE.	SECTION	COUNTY	TOTAL SHEETS	SHEET NO.
VAR.	FY2014 ITS-1	CHAMPAIGN	71	12
			CONTRACT NO. 70A26	
ILLINOIS FED. AID PROJECT				