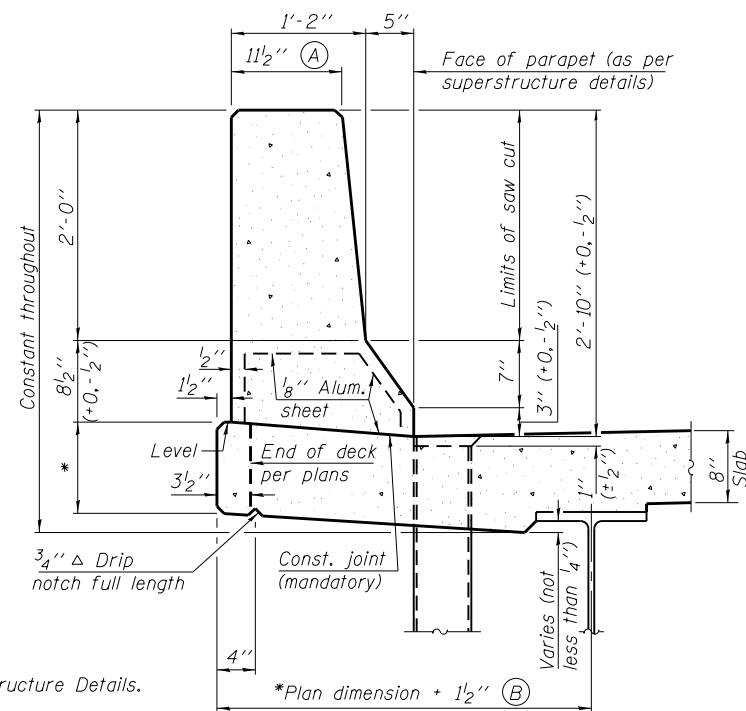
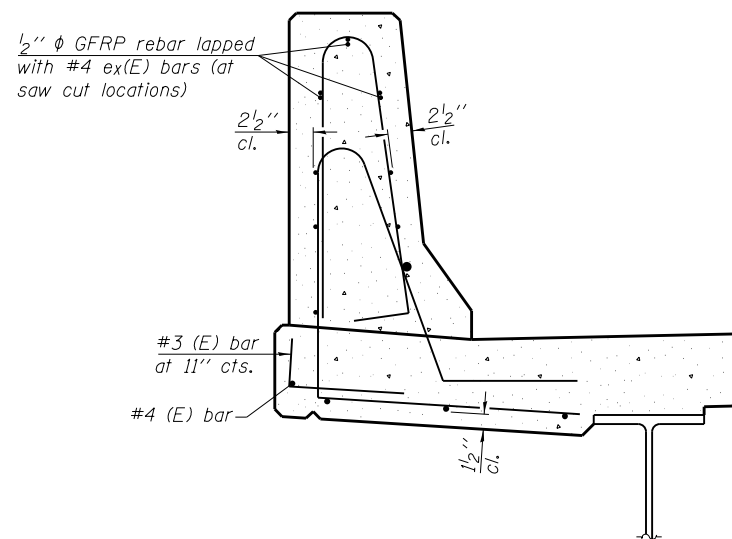


**GENERAL NOTES**

All dimensions shall remain the same as shown on superstructure details, except dimensions A and B which are to be revised as shown to provide additional clearance. Additional concrete needed to revise dimension A and B = 0.0165 cu. yds./ft. for 34" parapet or = 0.0223 cu. yds./ft. for 42" parapet. Place aluminum sheet in curb portion at and near piers. Full thickness saw cut at all joint locations in lieu of cork joint filler. Steel superstructure shown. Other superstructure types similar.

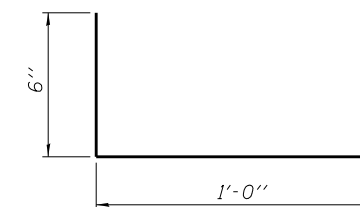


**34" F SHAPE PARAPET SECTION**  
(Showing dimensions)

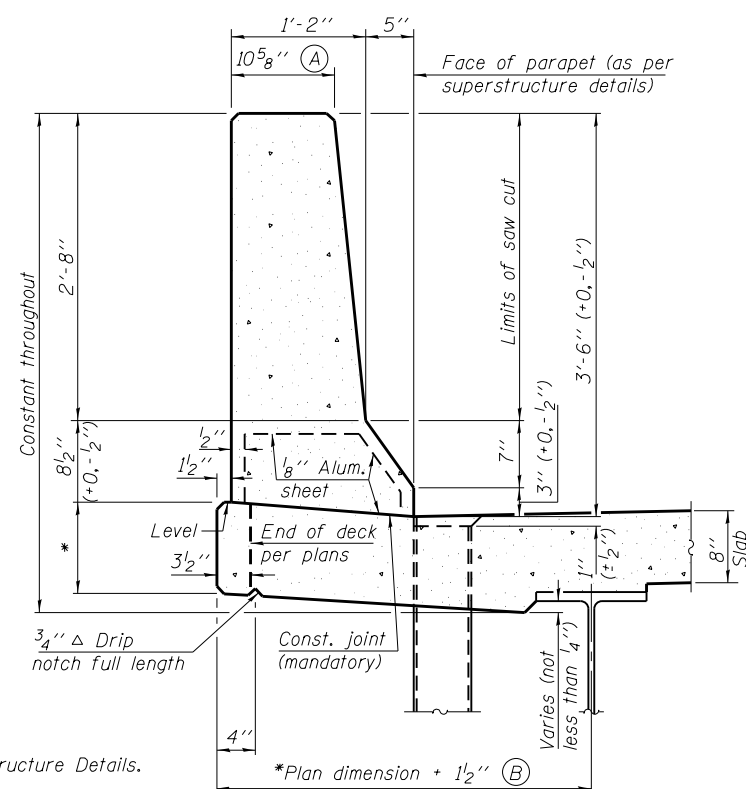


**SECTION**

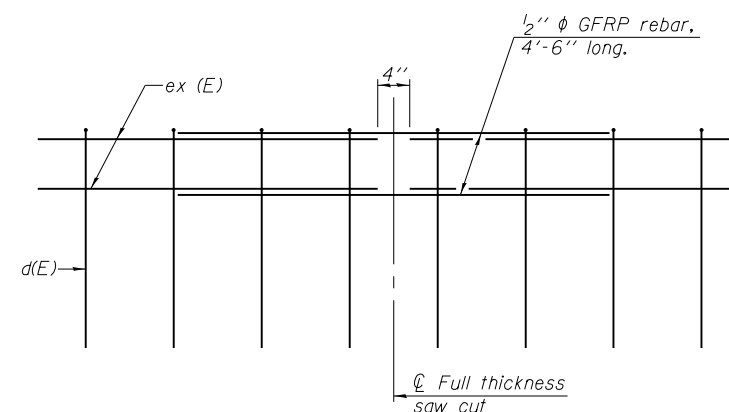
(34" parapet shown - 42" parapet similar)  
(Showing reinforcement clearances for slip forming and additional reinforcement bars)



**#3 (E) BAR**

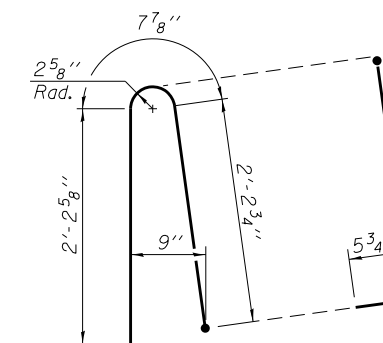


**42" F SHAPE PARAPET SECTION**  
(Showing dimensions)

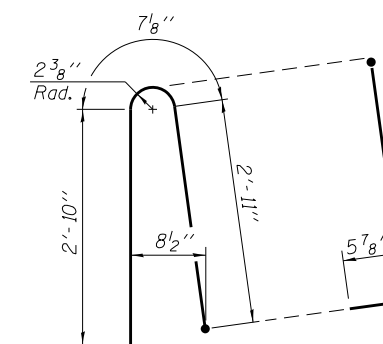


**GFRP REBAR STIFFENING DETAIL**

(Place as shown in parapet section at each parapet joint location.)



**ALTERNATE BAR d(E)**  
(For 34" parapet when conduit is present)



**ALTERNATE BAR d(E)**  
(For 42" parapet when conduit is present)

SFP 34-42

8-16-12

**E** LIN ENGINEERING, LTD.  
Consulting Engineers  
Springfield, Illinois

USER NAME =	DESIGNED - HP	REVISED -
FILE NAME =	CHECKED - MTH	REVISED -
PLOT SCALE =	DRAWN - AJF	REVISED -
PLOT DATE =	CHECKED - MTH	REVISED -

**STATE OF ILLINOIS**  
**DEPARTMENT OF TRANSPORTATION**

**CONCRETE PARAPET SLIPFORMING OPTION**  
**STRUCTURE NO. 075-0511**

SHEET NO. 9 OF 19 SHEETS

F.A.P. RTE.	SECTION	COUNTY	TOTAL SHEETS	SHEET NO.
745	108B-3	PIKE	69	44
CONTRACT NO. 72B61				
ILLINOIS FED. AID PROJECT				