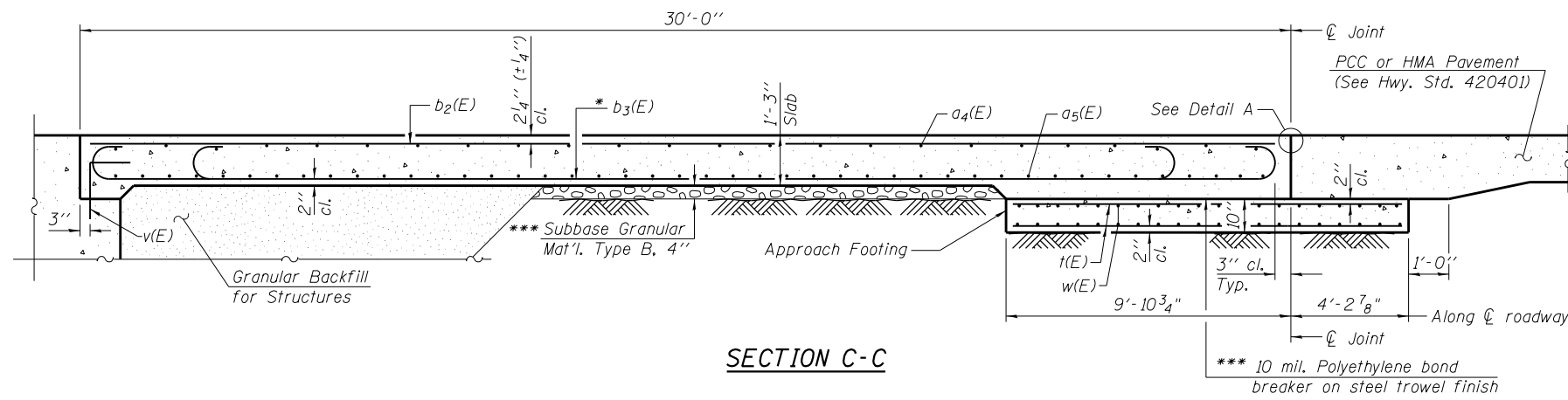
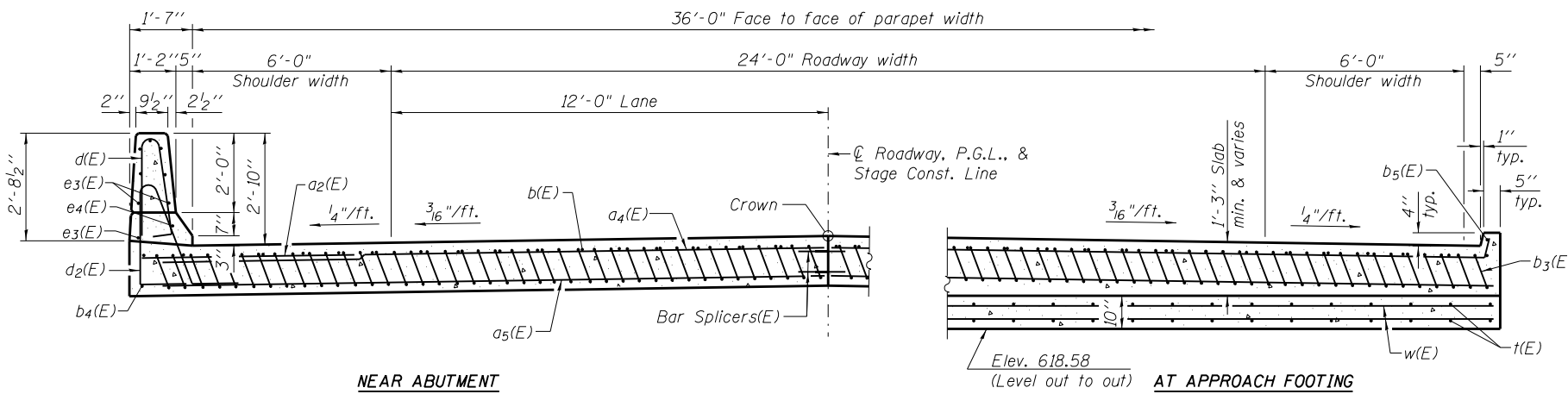


Notes:
 See sheet 11 of 19 for Detail A and View B-B.
 Approach slab and parapet concrete shall be paid for as Concrete Superstructure.
 Approach footing concrete shall be paid for as Concrete Structures.
 Reinforcement shall be paid for as Reinforcement Bars, Epoxy Coated.
 For v(E) bar details, see sheet 10 of 19.
 The approach footing maximum applied service bearing pressure (Q_{max}) = 2.0 ksf.
 For bar splicer details, see sheet 17 of 19.
 Cost of excavation for approach footing included with Concrete Structures.
 For Granular Backfill for Structures and drainage treatment details, see sheet 2 of 19.
 For additional parapet details, see sheet 8 of 19.



SECTION C-C

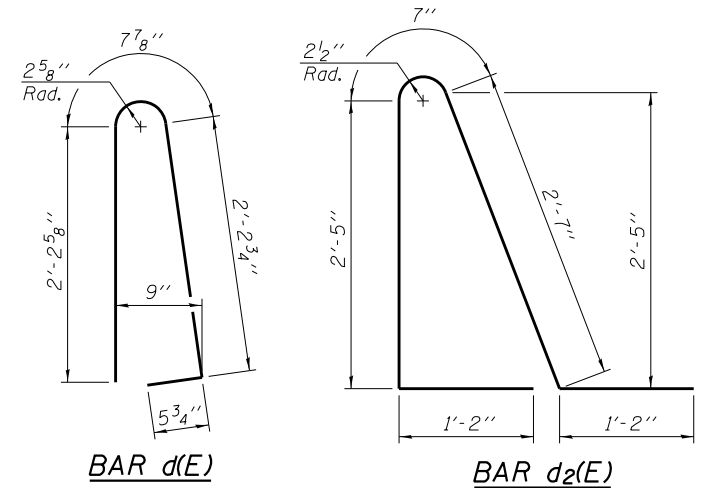


NEAR ABUTMENT

SECTION D-D

(See Plan for dimensions not shown)

AT APPROACH FOOTING

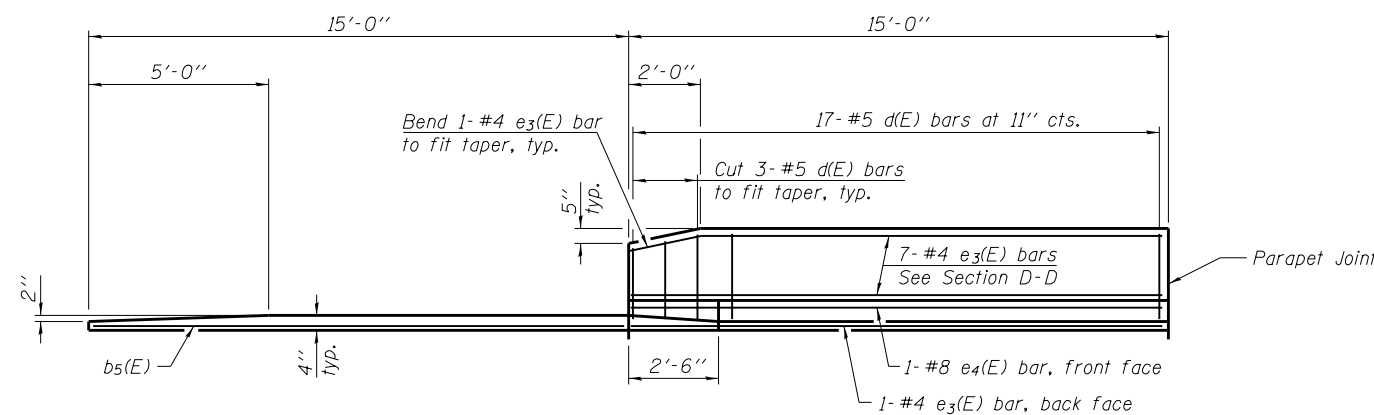


BAR d(E)

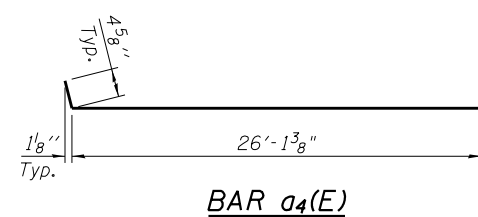
BAR d2(E)

* Tilt #9 b₃(E) bars as required to maintain clearance.

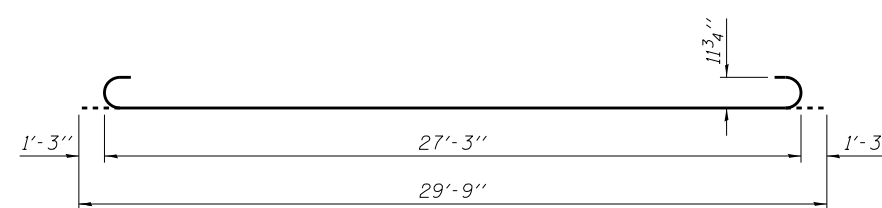
*** Cost included with Concrete Superstructure.



VIEW E-E



BAR a4(E)



BAR b3(E)

TWO APPROACHES
 BILL OF MATERIAL

| Bar | No. | Size | Length | Shape |
|----------------------------------|-----|---------|---------|-------|
| a ₂ (E) | 48 | #6 | 6'-6" | — |
| a ₄ (E) | 100 | #4 | 26'-6" | — |
| a ₅ (E) | 184 | #5 | 26'-3" | — |
| b ₂ (E) | 60 | #4 | 29'-8" | — |
| b ₃ (E) | 180 | #9 | 29'-9" | — |
| b ₄ (E) | 4 | #4 | 14'-8" | — |
| b ₅ (E) | 4 | #4 | 14'-10" | — |
| d(E) | 68 | #5 | 5'-7" | — |
| d ₂ (E) | 68 | #5 | 7'-11" | — |
| e ₃ (E) | 32 | #4 | 14'-8" | — |
| e ₄ (E) | 4 | #8 | 14'-8" | — |
| t(E) | 152 | #4 | 13'-9" | — |
| w(E) | 160 | #5 | 26'-3" | — |
| Concrete Superstructure | | Cu. Yd. | 165.2 | |
| Concrete Structures | | Cu. Yd. | 33.1 | |
| Reinforcement Bars, Epoxy Coated | | Pound | 33960 | |

(Sheet 2 of 2)