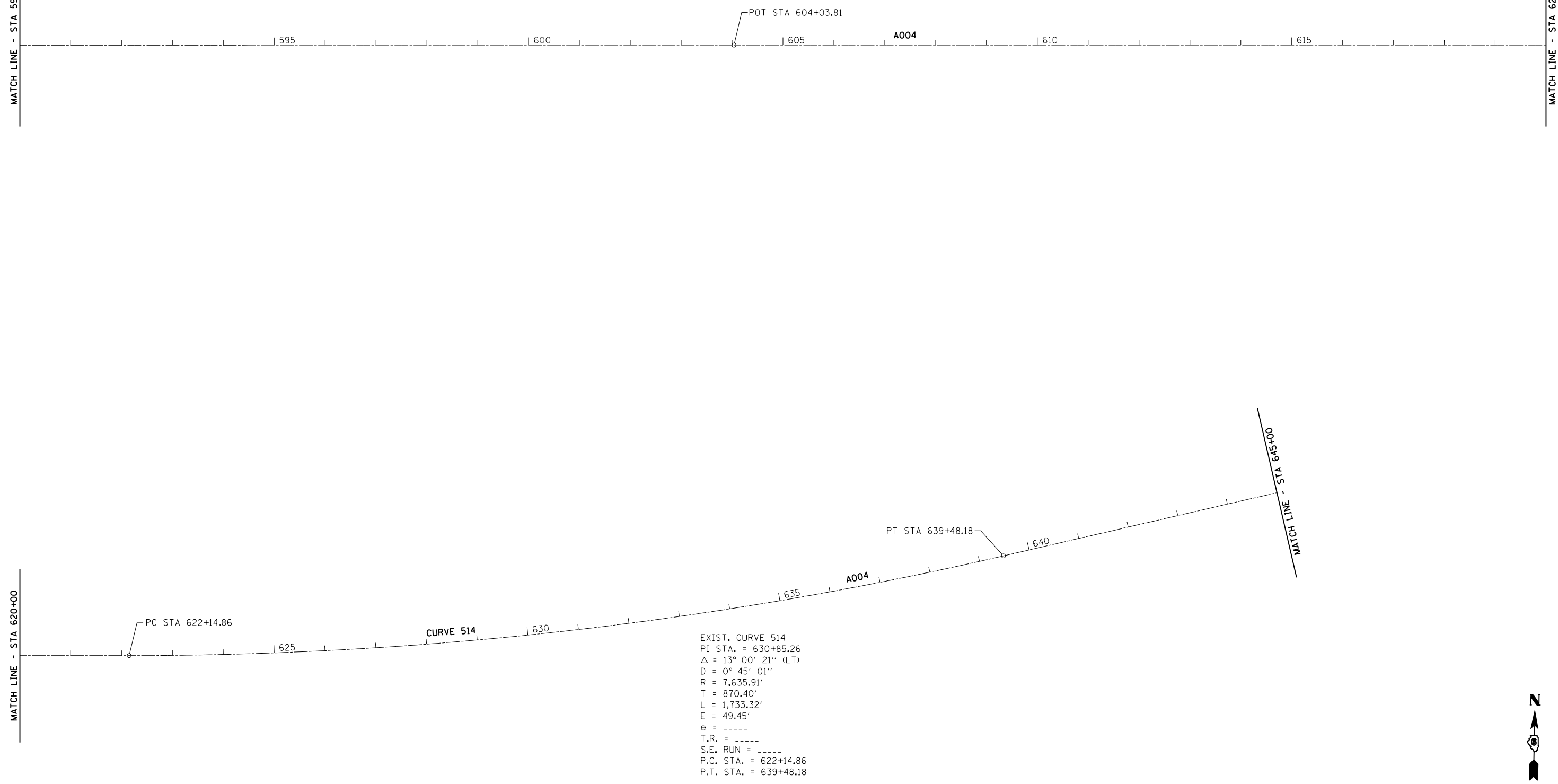




MATCH LINE - STA 620+00

MATCH LINE - STA 590+00



EXIST. CURVE 514  
 P.I. STA. = 630+85.26  
 $\Delta = 13^\circ 00' 21''$  (LT)  
 $D = 0^\circ 45' 01''$   
 $R = 7,635.91'$   
 $T = 870.40'$   
 $L = 1,733.32'$   
 $E = 49.45'$   
 $e = \text{-----}$   
 $T.R. = \text{-----}$   
 $S.E. \text{ RUN} = \text{-----}$   
 P.C. STA. = 622+14.86  
 P.T. STA. = 639+48.18



FILE NAME =	USER NAME = sparksgw	DESIGNED -	REVISED -
c:\pwwork\pwwork\sparksgw\0215133\06xxx-shit-plan&profile.dgn		DRAWN - DMS	REVISED -
Default	PLOT SCALE = 200.0000' / in.	CHECKED -	REVISED -
	PLOT DATE = Jul-14-2014 03:37:08PM	DATE -	REVISED -

**STATE OF ILLINOIS  
DEPARTMENT OF TRANSPORTATION**

**ALIGNMENT, CROSS TIES & BENCHMARKS**

SCALE: SHEET 6 OF SHEETS STA. TO STA.

F.A.I. RTE.	SECTION	COUNTY	TOTAL SHEETS	SHEET NO.
	**	LOGAN	108	40
ILLINOIS FED. AID PROJECT			CONTRACT NO.	72D41