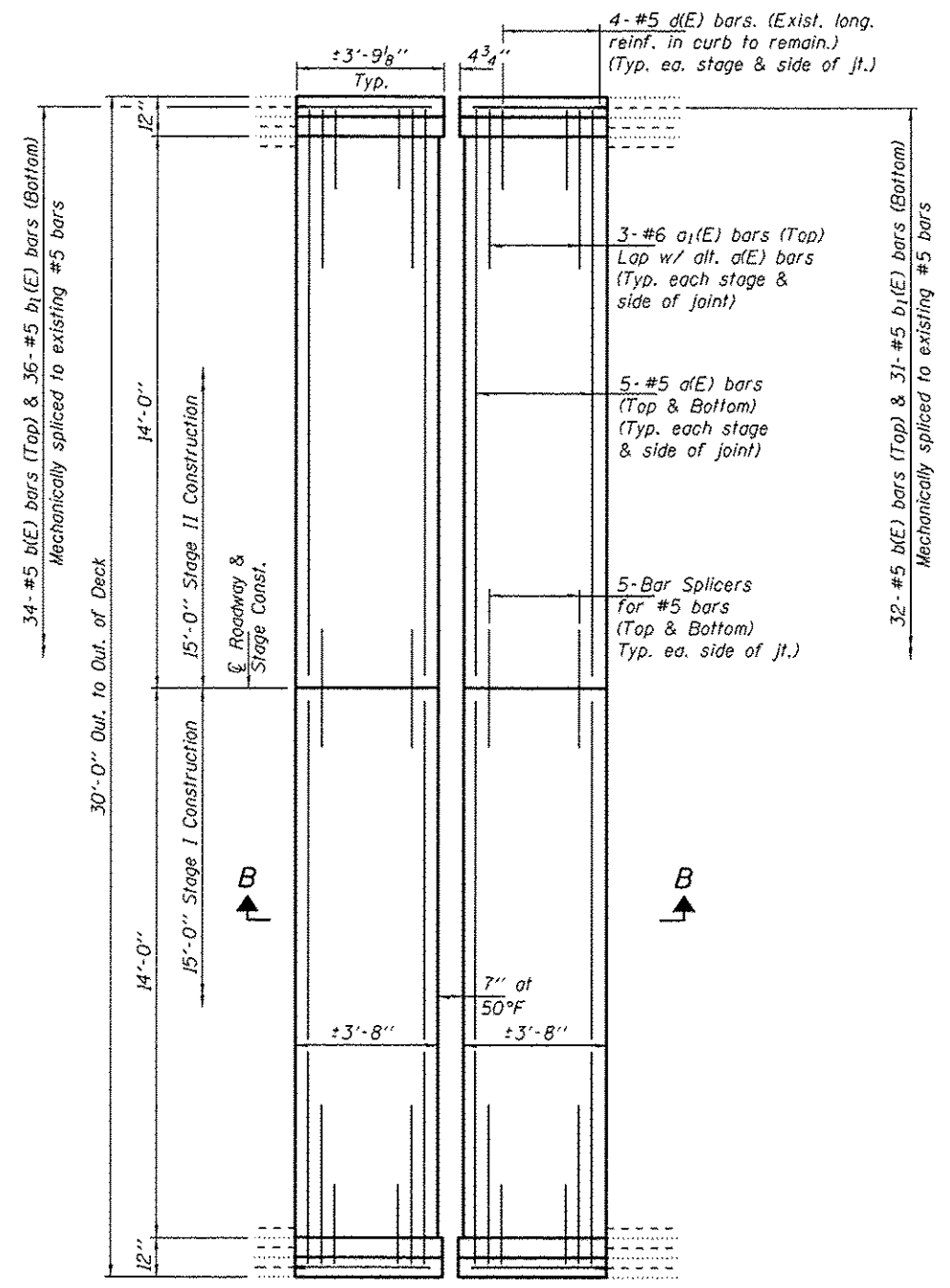
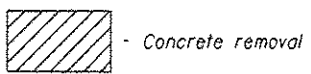
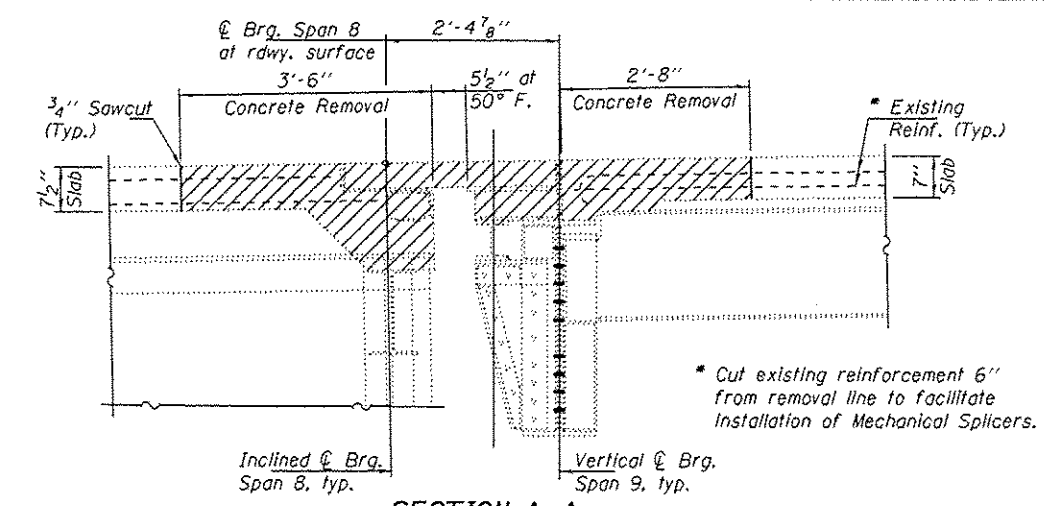
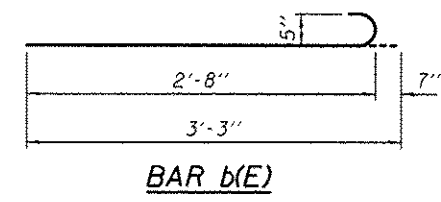
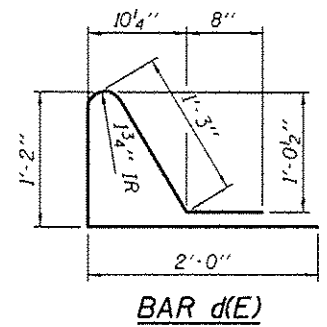


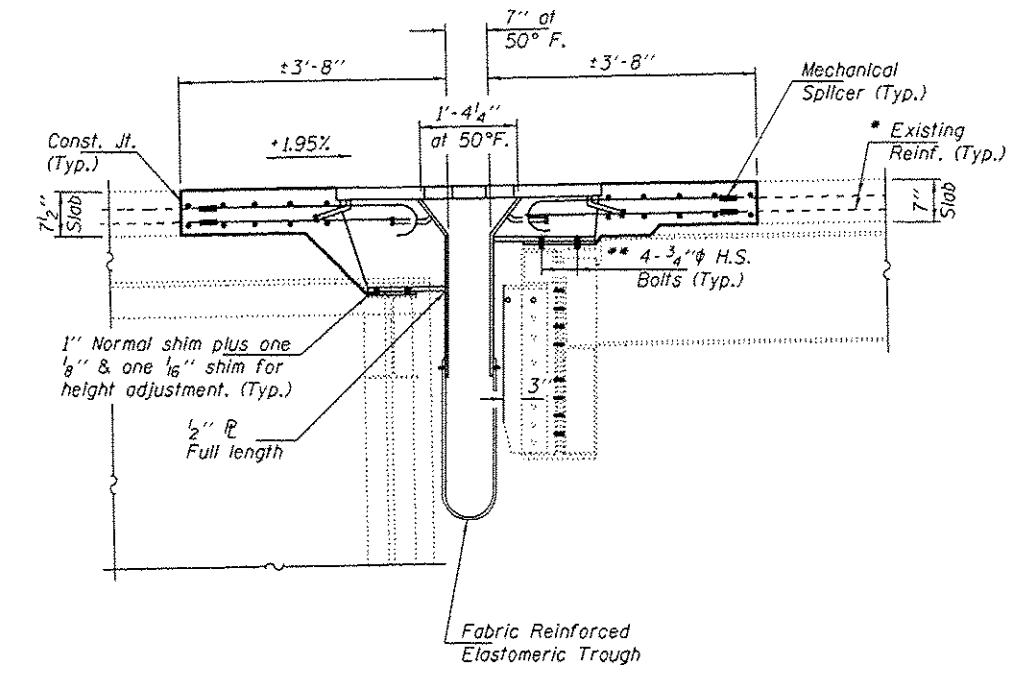
CONCRETE REMOVAL AT PIER 8



CONCRETE REPLACEMENT AT PIER 8



SECTION A-A
See sheet 12 of 14 for Structural steel removal.



SECTION B-B
For Trough details see sheets 4 & 9 of 14.

** With nut & 3" x 3" x 3/8" square washer at each bolt. 2" holes in stool flange. Field drill 7/8" holes in diaphragms and beam flanges.

BILL OF MATERIAL (PIER 8)

Bar	No.	Size	Length	Shape
a(E)	40	#5	14'-8"	
a1(E)	12	#6	4'-0"	
b(E)	66	#5	3'-3"	
b1(E)	67	#5	2'-9"	
d(E)	16	#5	5'-2"	
Concrete Removal		Cu. Yd.	5.6	
Concrete Superstructure		Cu. Yd.	5.8	
Bar Splicers		Each	20	
Mechanical Splicers		Each	133	
Reinforcement Bars, Epoxy Coated		Pounds	1190	

DESIGNED - ATH	EXAMINED - <i>[Signature]</i>	DATE - AUGUST 18, 2014
CHECKED - VHV	ACTING ENGINEER OF STRUCTURAL SERVICES	
DRAWN - Kyle M. Staffan	PASSED - <i>[Signature]</i>	REVISED
CHECKED - ATH VHV	ACTING ENGINEER OF BRIDGES AND STRUCTURES	REVISED

STATE OF ILLINOIS
DEPARTMENT OF TRANSPORTATION

PIER 8 FINGER PLATE JOINT
SN 009-0001

SHEET NO. 3 OF 14 SHEETS

F.A.P. RTE. 310	SECTION 106)BJR	COUNTY CASS	TOTAL SHEETS 19	SHEET NO. 8
CONTRACT NO. 72H29			ILLINOIS FED. AID PROJECT	