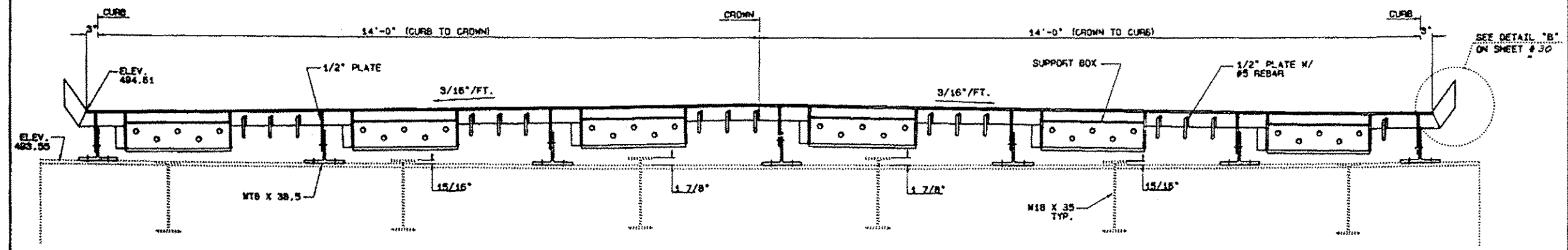
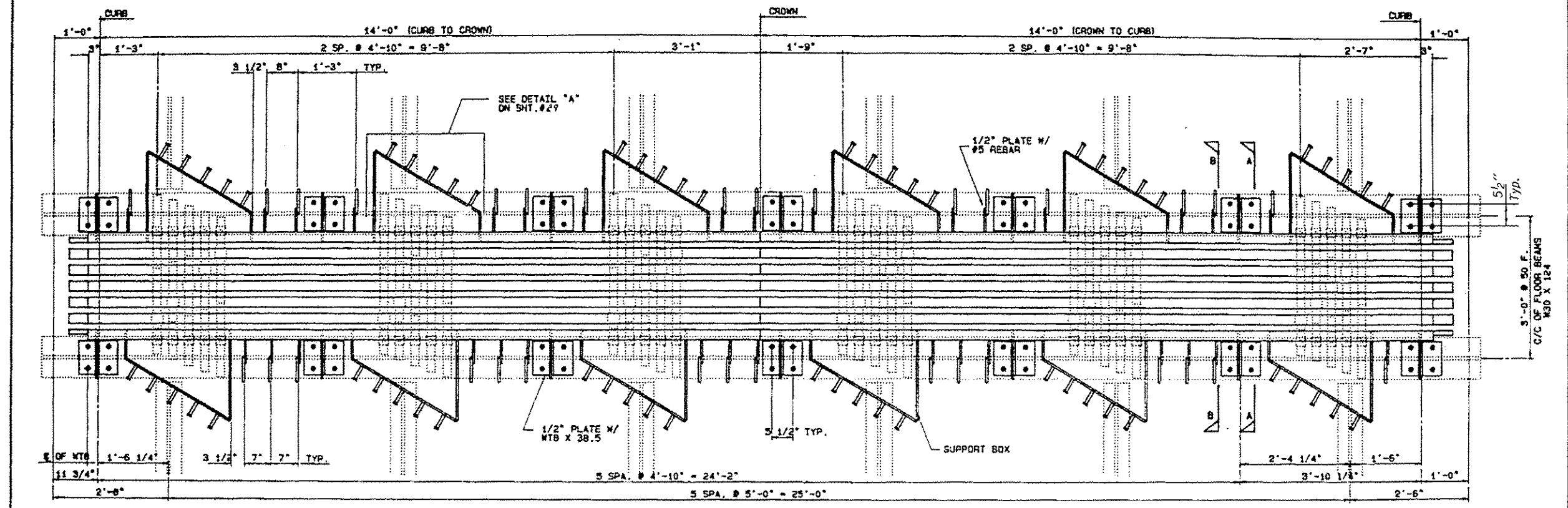


STATE OF ILLINOIS  
DEPARTMENT OF TRANSPORTATION

SHEET NO 28	
32	115 SHEETS



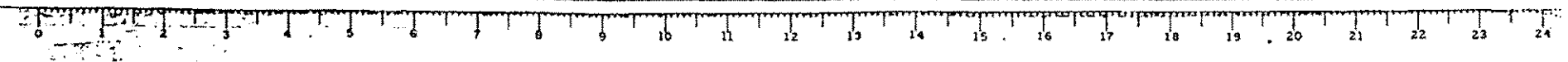
DESIGNED *David P. Shaw*  
CHECKED *Ludwig Hohl*  
DRAWN *TEA*  
CHECKED

May 22, 2014  
EXAMINED *James J. Rayburn*  
PASSED *Carl E. Morrison*  
APPROVED

FOR  
INFORMATION  
ONLY

NOTE:  
SECTIONS A-A & B-B ARE ON SHEET #30

MODULAR EXPANSION JOINT (16')  
FD RT 10 SEC 66 BR  
CASS-SCHUYLER COUNTIES  
STA. 39+58.00



DESIGNED - ATH	EXAMINED - <i>James J. Rayburn</i>	DATE - AUGUST 18, 2014	STATE OF ILLINOIS DEPARTMENT OF TRANSPORTATION		PIER 10 JOINT DETAILS SN 009-0001		F.A.P. RTE. 310	SECTION 1861BJR	COUNTY CASS	TOTAL SHEETS 19	SHEET NO. 11
CHECKED - VHV	PASSED - <i>Carl E. Morrison</i>	REVISED	SHEET NO. 6 OF 14 SHEETS		ILLINOIS FED. AID PROJECT		CONTRACT NO. 72H29				