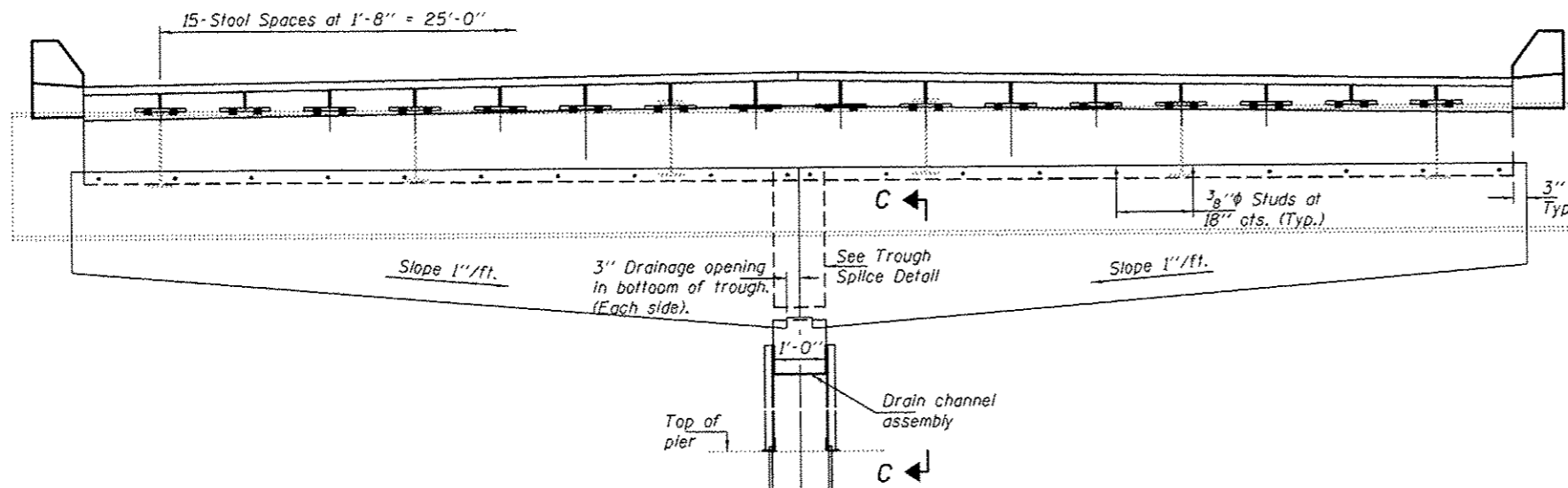
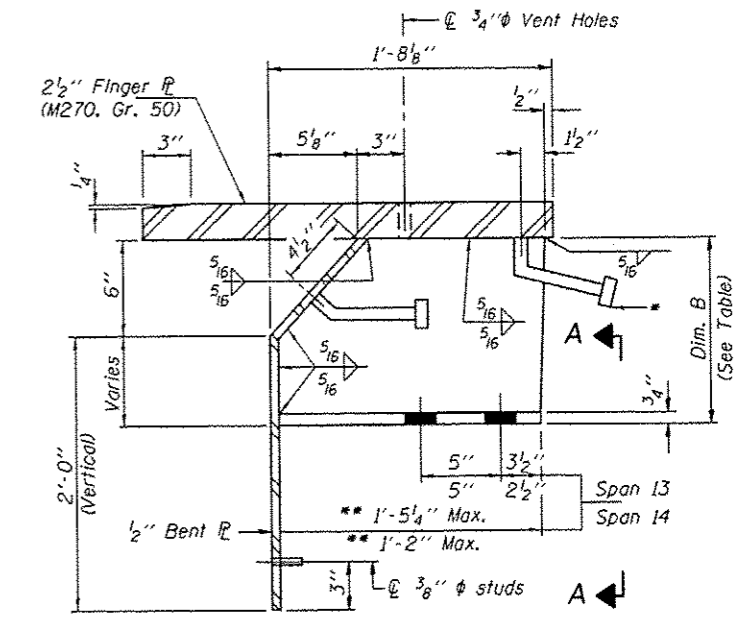


CROSS SECTION THRU SPAN 14



CROSS SECTION THRU SPAN 13



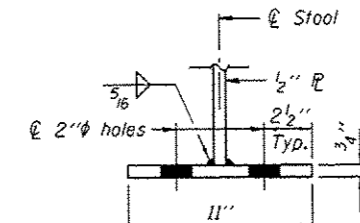
STOOL "B" DETAILS AT PIER 13

DIMENSION "B" AT PIER 13

Stool No.	Dim. B	Stool No.	Dim. B
BN1	3 ¹⁵ / ₁₆ "	BS1	6 ¹⁵ / ₁₆ "
BN2	4 ¹ / ₄ "	BS2	9 ³ / ₈ "
BN3	4 ⁹ / ₁₆ "	BS3	9 ¹¹ / ₁₆ "
BN4	4 ⁷ / ₈ "	BS4	10"
BN5	5 ³ / ₁₆ "	BS5	10 ⁵ / ₁₆ "
BN6	5 ¹ / ₂ "	BS6	8 ¹ / ₂ "
BN7	5 ¹³ / ₁₆ "	BS7	10 ¹⁵ / ₁₆ "
BN8	6 ¹ / ₈ "	BS8	11 ¹ / ₄ "
BN9	6 ¹ / ₈ "	BS9	11 ¹ / ₄ "
BN10	5 ¹³ / ₁₆ "	BS10	10 ¹⁵ / ₁₆ "
BN11	5 ¹ / ₂ "	BS11	8 ¹ / ₂ "
BN12	5 ³ / ₁₆ "	BS12	10 ⁵ / ₁₆ "
BN13	4 ⁷ / ₈ "	BS13	10"
BN14	4 ⁹ / ₁₆ "	BS14	9 ¹¹ / ₁₆ "
BN15	4 ¹ / ₄ "	BS15	9 ³ / ₈ "
BN16	3 ¹⁵ / ₁₆ "	BS16	6 ¹⁵ / ₁₆ "

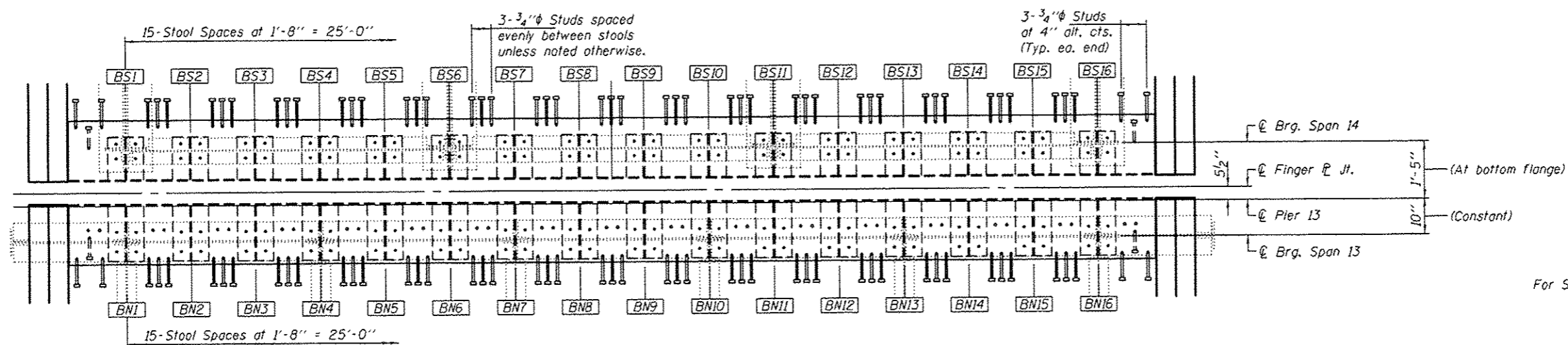
* 3/4" φ x 8" granular or solid flux filled headed studs conforming to Art. 1006.32 of the Std. Specs. automatically end welded.

** Dimension varies at stool heights < 6"



VIEW A-A

Dimensions are at bearing. See Section B-B on sheet 7 of 14 for longitudinal slope.



PLAN VIEW AT PIER 13

For Sec. C-C, see sheet 9 of 14.