

F.A.S. RTE. 673	SECTION 2BR	COUNTY COLES	TOTAL SHEETS 24	SHEET NO. 1
ILLINOIS			CONTRACT NO. 74167	

STATE OF ILLINOIS
DEPARTMENT OF TRANSPORTATION
DIVISION OF HIGHWAYS

**PROPOSED
HIGHWAY PLANS**

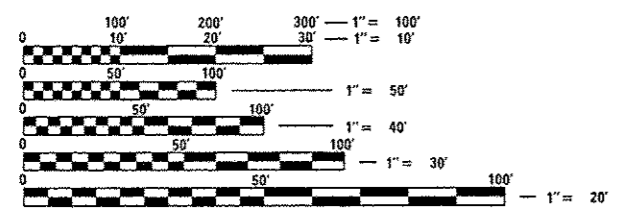
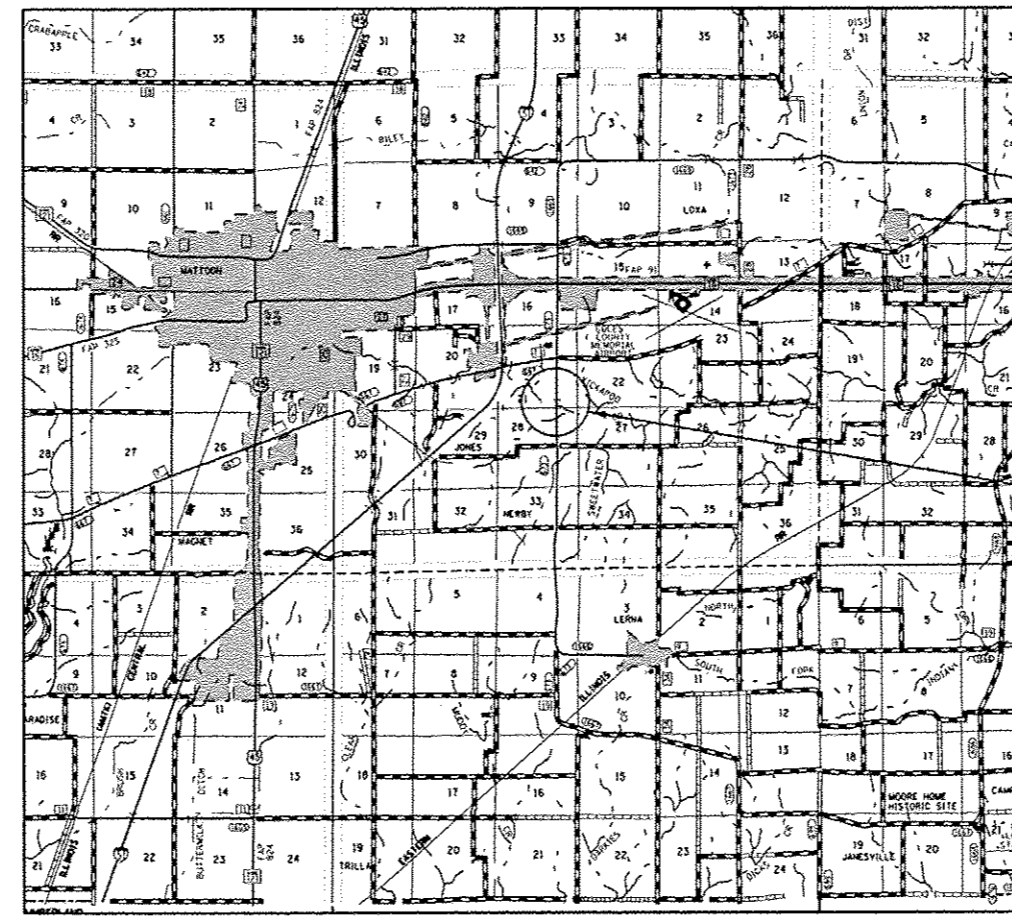
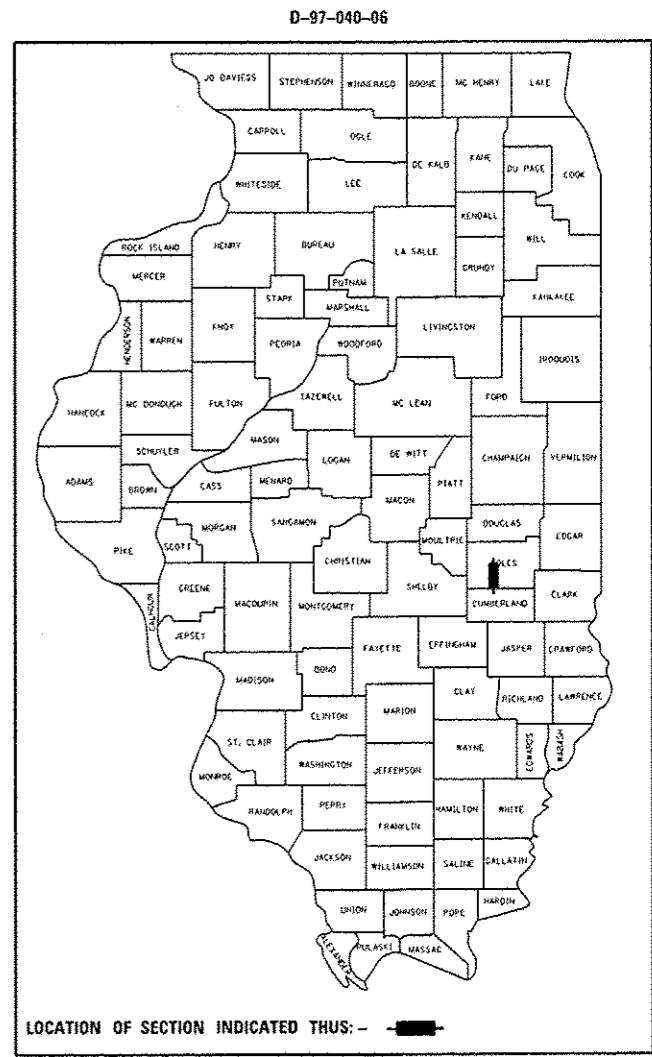
FAS ROUTE 673 (LERNA RD.)
SECTION 2BR

**SUPERSTRUCTURE REPLACEMENT
COLES COUNTY**

C-97-078-06

FOR INDEX OF SHEETS, SEE SHEET NO. 2

ADT (2012) = 3,400



FULL SIZE PLANS HAVE BEEN PREPARED USING STANDARD ENGINEERING SCALES. REDUCED SIZED PLANS WILL NOT CONFORM TO STANDARD SCALES. IN MAKING MEASUREMENTS ON REDUCED PLANS, THE ABOVE SCALES MAY BE USED.

J.U.L.I.E.
JOINT UTILITY LOCATION INFORMATION FOR EXCAVATION
1-800-892-0123
OR 811

PROJECT ENGINEER: MARK DAUGHERTY
PROJECT MANAGER: BRIAN BIERMAN

GROSS LENGTH = 158 FT. = 0.03 MILE
NET LENGTH = 158 FT. = 0.03 MILE

CONTRACT NO. 74167

STATE OF ILLINOIS
DEPARTMENT OF TRANSPORTATION
DIVISION OF HIGHWAYS

SUBMITTED July 17 20 14
Roger L. Drishell
DEPUTY DIRECTOR OF HIGHWAYS, REGION ENGINEER

Aug 15 20 14
John D. Baranzelli, PE, BC
ENGINEER OF DESIGN AND ENVIRONMENT

Aug 15 20 14
Omer Osman, PE, BC
DIRECTOR OF HIGHWAYS, CHIEF ENGINEER

**PRINTED BY THE AUTHORITY
OF THE STATE OF ILLINOIS**