

STATE OF ILLINOIS  
DEPARTMENT OF TRANSPORTATION  
DIVISION OF HIGHWAYS

**PROPOSED  
HIGHWAY PLANS**

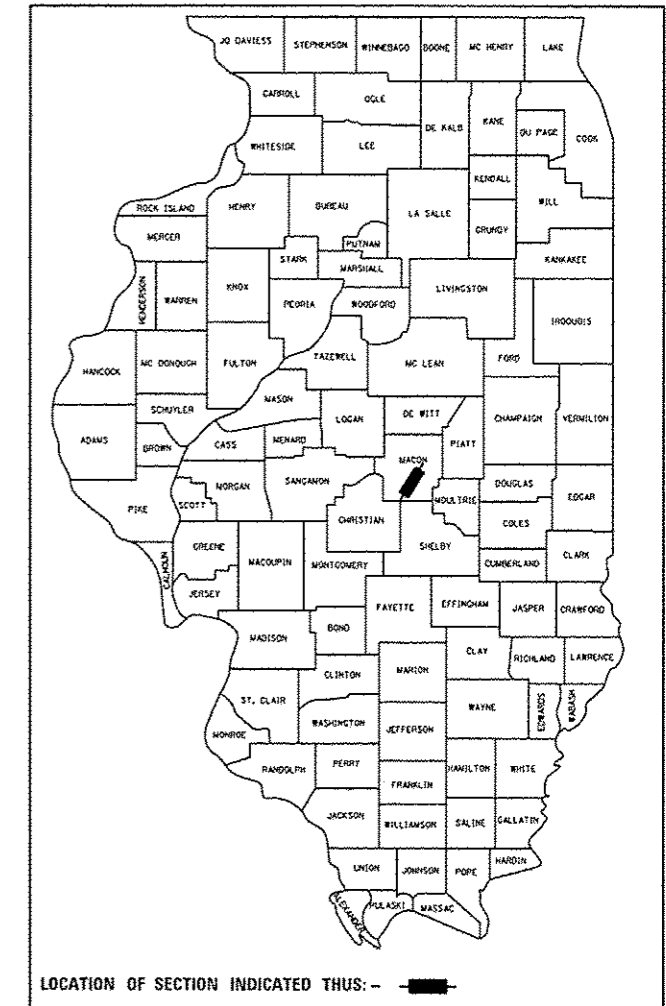
F.A.P. ROUTE 710 (IL 105)  
SECTION (48X-B-2)BR & (48BR)BR

BRIDGE REHABILITATION  
MACON COUNTY

C-97-041-10

F.A.P. RTE.	SECTION	COUNTY	TOTAL SHEETS	SHEET NO.
710	(48X-B-2)BR & (48BR)BR	MACON	144	1
ILLINOIS		CONTRACT NO. 74438		

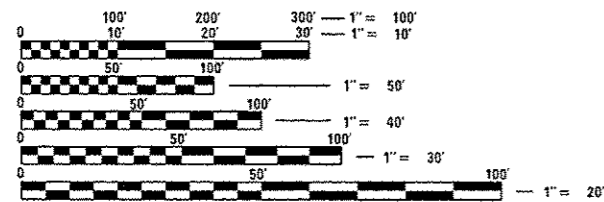
D-97-018-10



FOR INDEX OF SHEETS, SEE SHEET NO. 2  
FOR SUMMARY OF QUANTITIES, SEE SHEET 4

OTHER PRINCIPAL ARTERIAL  
ADT = 14,760 (2011) NB  
ADT = 14,350 (2011) SB

PROPOSED IMPROVEMENT ENDS  
STA. 661 + 51.35 (SB)  
STA. 660 + 97.71 (NB)  
PROPOSED IMPROVEMENT BEGINS  
STA. 650 + 36.40 (NB)  
STA. 650 + 73.29 (SB)

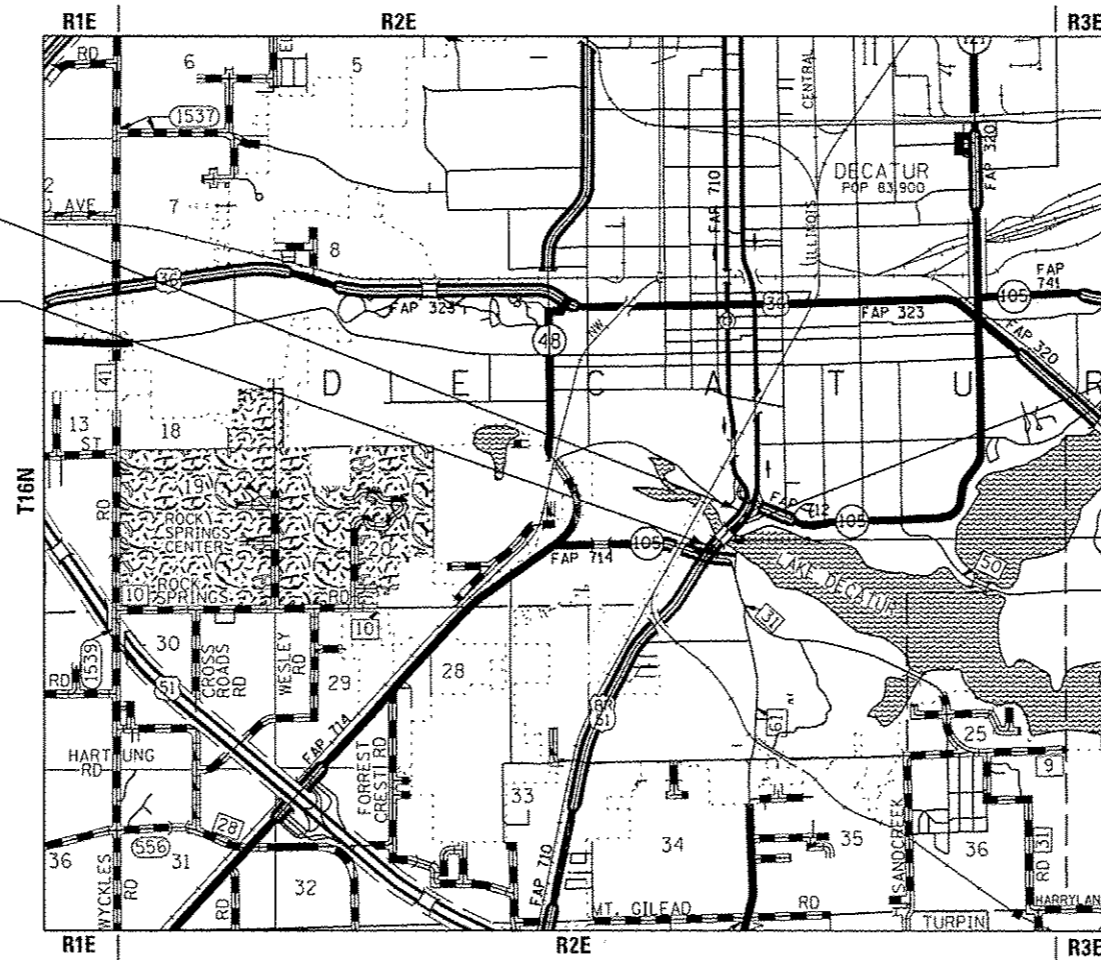


FULL SIZE PLANS HAVE BEEN PREPARED USING STANDARD ENGINEERING SCALES. REDUCED SIZED PLANS WILL NOT CONFORM TO STANDARD SCALES. IN MAKING MEASUREMENTS ON REDUCED PLANS, THE ABOVE SCALES MAY BE USED.

J.U.L.I.E.  
JOINT UTILITY LOCATION INFORMATION FOR EXCAVATION  
1-800-892-0123  
OR 811

PROJECT ENGINEER: TOM ROMAN  
DISTRICT 7 PHONE: (217) 342-8320

CONTRACT NO. 74438



LOCATION MAP



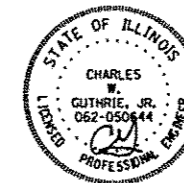
GROSS LENGTH = 1114.9 FT. = 0.211 MILE  
NET LENGTH = 1114.9 FT. = 0.211 MILE

PROPOSED DECK REPLACEMENT  
SN 058-0049 (SB)  
STATION 655 + 79.10  
476'-6" B-B APPROACH BENTS  
32'-0" REINF. CONC. DECK  
SKEW = 0 DEGREES

PROPOSED DECK REPLACEMENT  
SN 058-0010 (NB)  
STATION 655 + 79.10  
530'-0" B-B APPROACH BENTS  
31'-6" REINF. CONC. DECK  
SKEW = 0 DEGREES

STATE OF ILLINOIS  
DEPARTMENT OF TRANSPORTATION  
DIVISION OF HIGHWAYS  
SUBMITTED June 25 2014  
Roman & Oriskany/2014  
DEPUTY DIRECTOR OF HIGHWAYS, REGION ENGINEER  
Aug 15 2014  
John D. Baranzelli, P.E., PE  
ACTING ENGINEER OF DESIGN AND ENVIRONMENT  
Aug 15 2014  
Ormer Osman, P.E., PE  
DIRECTOR OF HIGHWAYS, CHIEF ENGINEER

BLANK, WESSELINK, COOK & ASSOCIATES  
ENGINEERS - CONSULTANTS  
DECATUR, ILLINOIS



Charles W. Guthrie, Jr.  
CHARLES W. GUTHRIE, JR., P.E.  
DATE June 19 2014  
EXPIRES NOVEMBER 30, 2015

PRINTED BY THE AUTHORITY  
OF THE STATE OF ILLINOIS