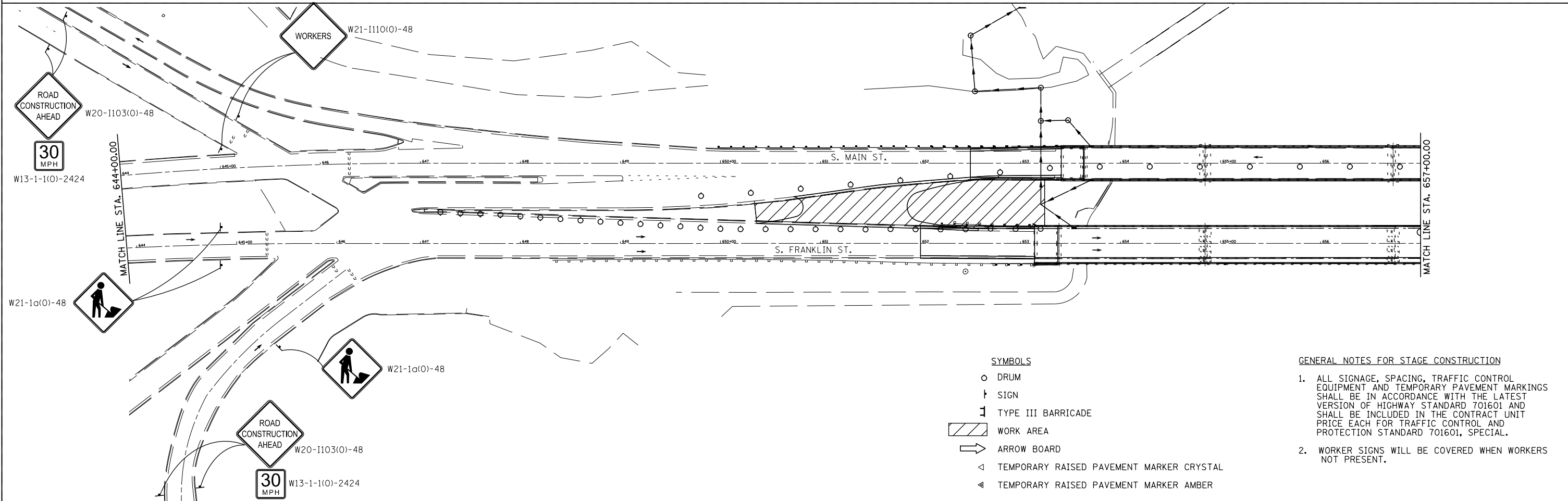
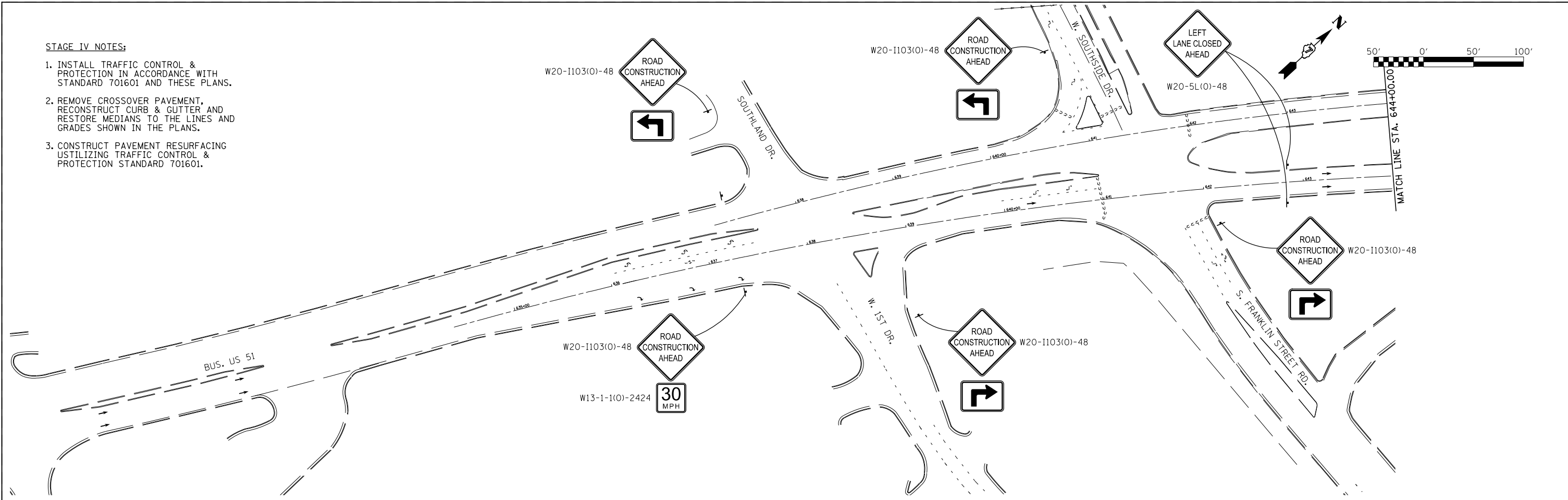


STAGE IV NOTES:

1. INSTALL TRAFFIC CONTROL & PROTECTION IN ACCORDANCE WITH STANDARD 701601 AND THESE PLANS.
2. REMOVE CROSSOVER PAVEMENT, RECONSTRUCT CURB & GUTTER AND RESTORE MEDIANS TO THE LINES AND GRADES SHOWN IN THE PLANS.
3. CONSTRUCT PAVEMENT RESURFACING UTILIZING TRAFFIC CONTROL & PROTECTION STANDARD 701601.



- SYMBOLS**
- DRUM
 - † SIGN
 - ⌚ TYPE III BARRICADE
 - ▨ WORK AREA
 - ➡ ARROW BOARD
 - ◁ TEMPORARY RAISED PAVEMENT MARKER CRYSTAL
 - ◄ TEMPORARY RAISED PAVEMENT MARKER AMBER

GENERAL NOTES FOR STAGE CONSTRUCTION

1. ALL SIGNAGE, SPACING, TRAFFIC CONTROL EQUIPMENT AND TEMPORARY PAVEMENT MARKINGS SHALL BE IN ACCORDANCE WITH THE LATEST VERSION OF HIGHWAY STANDARD 701601 AND SHALL BE INCLUDED IN THE CONTRACT UNIT PRICE EACH FOR TRAFFIC CONTROL AND PROTECTION STANDARD 701601, SPECIAL.
2. WORKER SIGNS WILL BE COVERED WHEN WORKERS NOT PRESENT.

FILE NAME =	USER NAME = \$USER\$	DESIGNED -	REVISED -
\$FILEL\$		DRAWN -	REVISED -
	PLOT SCALE = \$SCALE\$	CHECKED -	REVISED -
	PLOT DATE = \$DATE\$	DATE -	REVISED -

**STATE OF ILLINOIS
DEPARTMENT OF TRANSPORTATION**

STAGE IV TRAFFIC CONTROL

SCALE: SHEET NO. 8 OF 9 SHEETS STA. TO STA.

F.A.P. RTE.	SECTION	COUNTY	TOTAL SHEETS	SHEET NO.
710	(49-X-B-2)BR & (48BR)BR	MACON	144	29
CONTRACT NO. 74438				
ILLINOIS FED. AID PROJECT				