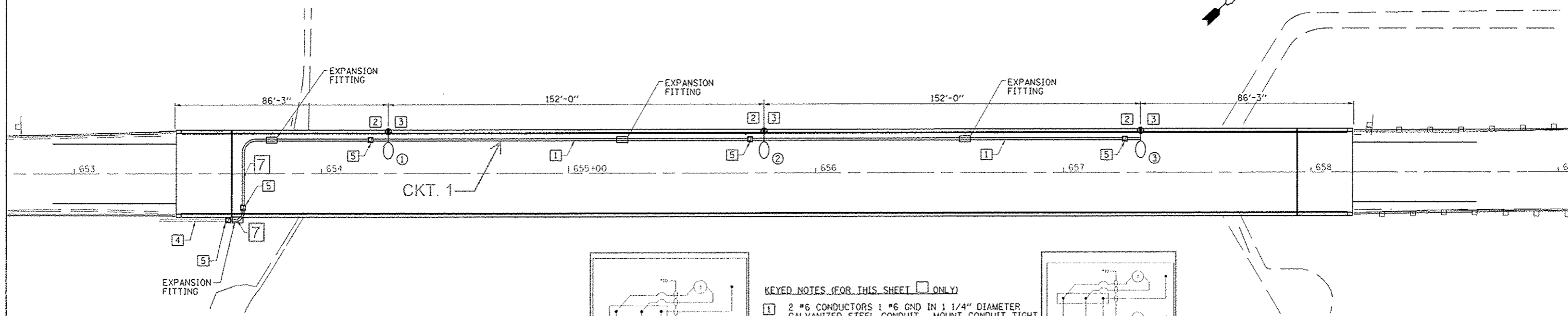
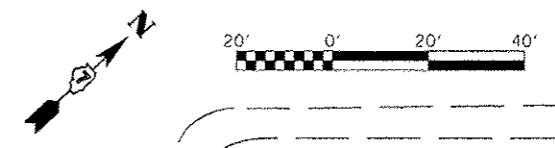


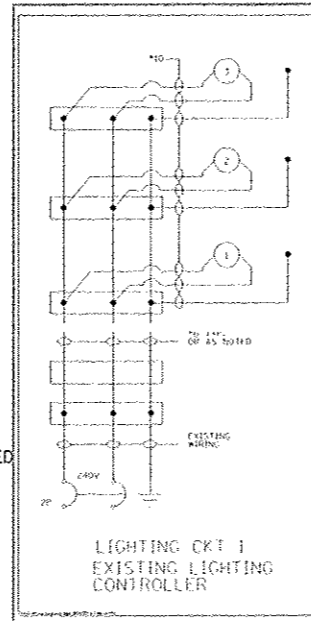
DATE	
BY	
REVISIONS	
NO.	
DATE	
BY	
REVISIONS	
NO.	
DATE	
BY	
REVISIONS	
NO.	
DATE	
BY	
REVISIONS	
NO.	

DATE	
BY	
REVISIONS	
NO.	
DATE	
BY	
REVISIONS	
NO.	
DATE	
BY	
REVISIONS	
NO.	



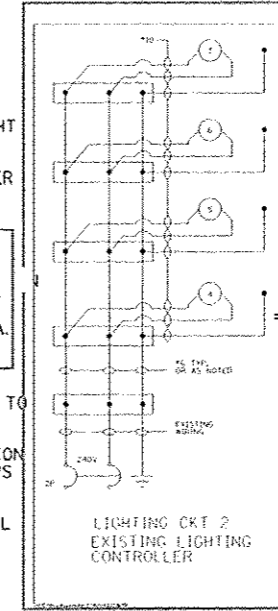
GENERAL LIGHTING NOTES:

- EXISTING LIGHT POLES, LUMINAIRES AND FOUNDATIONS ARE TO BE REMOVED, AND ALL ASSOCIATED HARDWARE AND APPURTANCES ARE TO BE SALVAGED. THE CONTRACTOR SHALL RETURN THE PROPERTY TO THE CITY OF DECATUR.
- CONTRACTOR SHALL BE RESPONSIBLE TO COORDINATE ELECTRICAL WORK WITH OTHER TRADES AND ALL SERVICE CONNECTIONS WITH LOCAL UTILITY COMPANY.
- CONTRACTOR SHALL INSTALL LIGHT POLES AT THE LOCATIONS INDICATED ON THE PLANS, MAINTAINING ADEQUATE CLEARANCE FROM OVERHEAD UTILITY LINES. CONTRACTOR SHALL BE RESPONSIBLE TO VERIFY CLEARANCES PER NATIONAL ELECTRICAL SAFETY CODE AND/OR THE REQUIREMENTS OF THE UTILITY COMPANIES. THE LOCATION OF BURIED AND ABOVE GROUND UTILITIES SHOWN ARE APPROXIMATE AND ARE SHOWN FOR INFORMATION ONLY. REROUTING, DISCONNECTION, RELOCATION, PROTECTION, ETC. OF ANY UTILITIES MUST BE COORDINATED BETWEEN THE CONTRACTOR, UTILITY COMPANY, AND OWNER. THE CONTRACTOR SHALL VERIFY THE EXACT LOCATION OF ALL UNDERGROUND UTILITIES PRIOR TO CONSTRUCTION.
- THE CONTRACTOR SHALL BE RESPONSIBLE FOR MAINTAINING THE LIGHTING SYSTEM UNTIL IDOT HAS THE ACCEPTANCE OF THE SYSTEM. ALL EXISTING CIRCUITS AND CABLES TO THE LIGHT POLES SHALL BE MAINTAINED AS NEEDED AND THIS WORK SHALL BE INCIDENTAL TO THE CONTRACT.
- BREAKWAY DEVICES SHALL NOT BE INSTALLED FOR POLES MOUNTED ON BRIDGE PARAPET WALLS.
- THE CONTRACTOR SHALL COMPLY WITH ALL THE LATEST IDOT, NEC AND LOCAL CODES AND ORDINANCES.



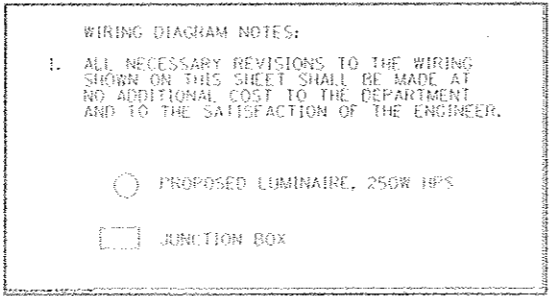
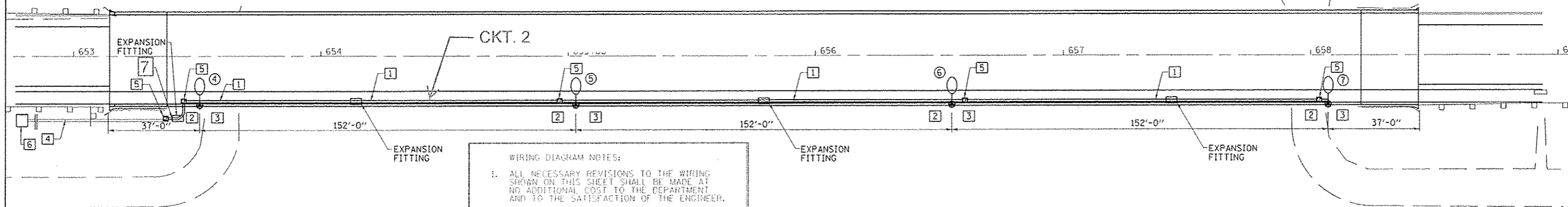
KEYED NOTES (FOR THIS SHEET ONLY)

- 2 #6 CONDUCTORS 1 #6 GND IN 1 1/4" DIAMETER GALVANIZED STEEL CONDUIT. MOUNT CONDUIT TIGHT TO UNDERSIDE OF BRIDGE DECK.
- 2 #10 CONDUCTORS WITH 1 #10 GND IN 2" DIAMETER PVC CONDUIT EMBEDDED IN STRUCTURE. (SEE STRUCTURE PLANS)
- COORDINATE THE INSTALLATION OF 2" DIA. EMBEDDED PVC CONDUIT, COUPLING AND 2" GALV. STEEL CONDUIT WITH BRIDGE CONTRACTOR. COST OF COUPLING SHALL BE INCLUDED IN THE COST OF 2" DIA. GALV. STEEL CONDUIT
- FIELD VERIFY EXISTING CONDUIT AND CONDUCTORS TO REMAIN.
- PROVIDE AND INSTALL 6" SQUARE, 4" DEEP JUNCTION BOX WITH STAINLESS STEEL, TAMPER PROOF SCREWS ATTACHED TO STRUCTURE.
- PROVIDE AND INSTALL 12"x10"x6" STAINLESS STEEL JUNCTION BOX TO REPLACE THE EXISTING BOX CONTAINING THE LIGHT CONTROL EQUIPMENT.
- 2 1/C #6 AND 1/C #6 GND IN 1 1/4" DIA. STAINLESS STEEL CONDUIT



LEGEND

- JUNCTION BOX STAINLESS STEEL, ATTACHED TO STRUCTURE, 6"x4"x4"
- LIGHT POLE, ALUMINUM, 35 FT M.H., 10 FT MAST ARM, WITH LUMINAIRE, HIGH PRESSURE SODIUM VAPOR, HORIZONTAL MOUNT, 250 WATT AND VIBRATION ISOLATION PADS.
- RIGID CONDUIT
- INDICATES KEYED NOTE FOR SHEET ON WHICH IT APPEARS UNLESS OTHERWISE NOTED.
- LIGHTPOLE NUMBER



REV.

FILE NAME :	USER NAME : USERS	DESIGNED -	REVISED -	STATE OF ILLINOIS DEPARTMENT OF TRANSPORTATION	LIGHTING PLAN		F.A.P. RTE.	SECTION	COUNTY	TOTAL SHEETS	SHEET NO.	
FILE# :	PLOT SCALE : *SCALE*	CHECKED -	REVISED -		SCALE:	SHEET NO. 2 OF 3 SHEETS	STA. TO STA.	710	(48-X-B-2)BR & (48)BR	MACON	144	37
	PLOT DATE : *DATE*	DRAWN -	REVISED -									
		CHECKED -	REVISED -									
CONTRACT NO. 74438											ILLINOIS FED. AID PROJECT	