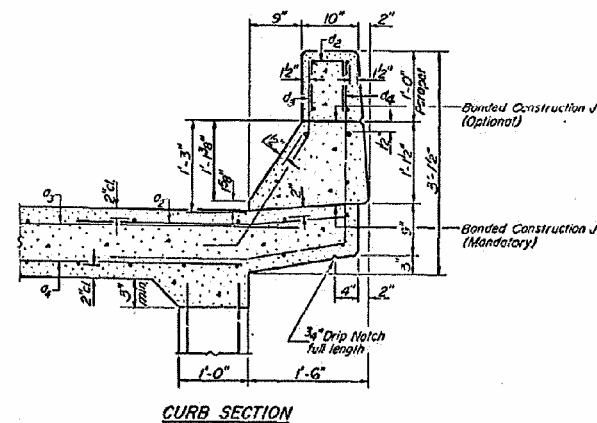
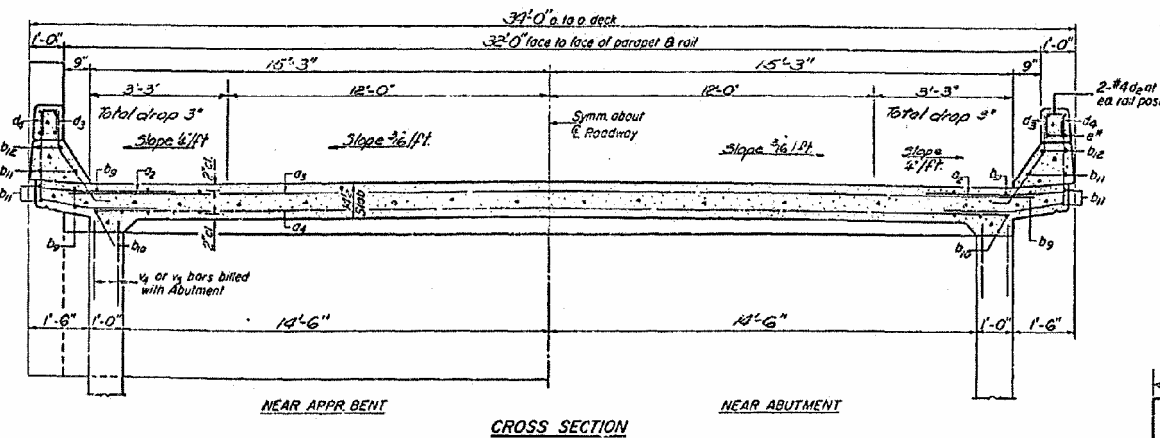
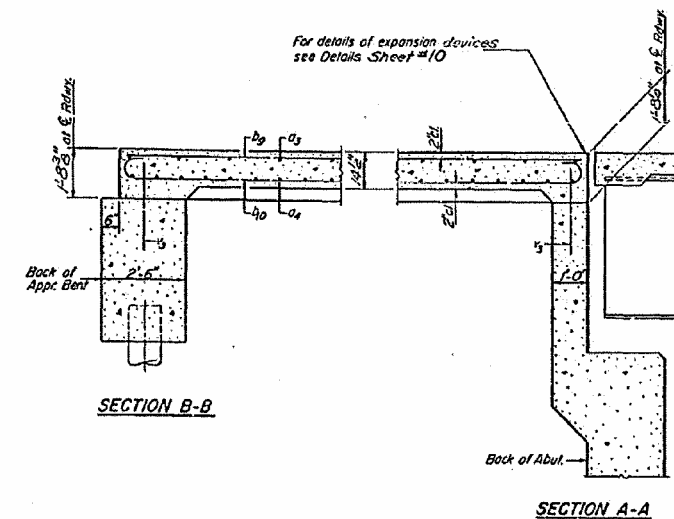
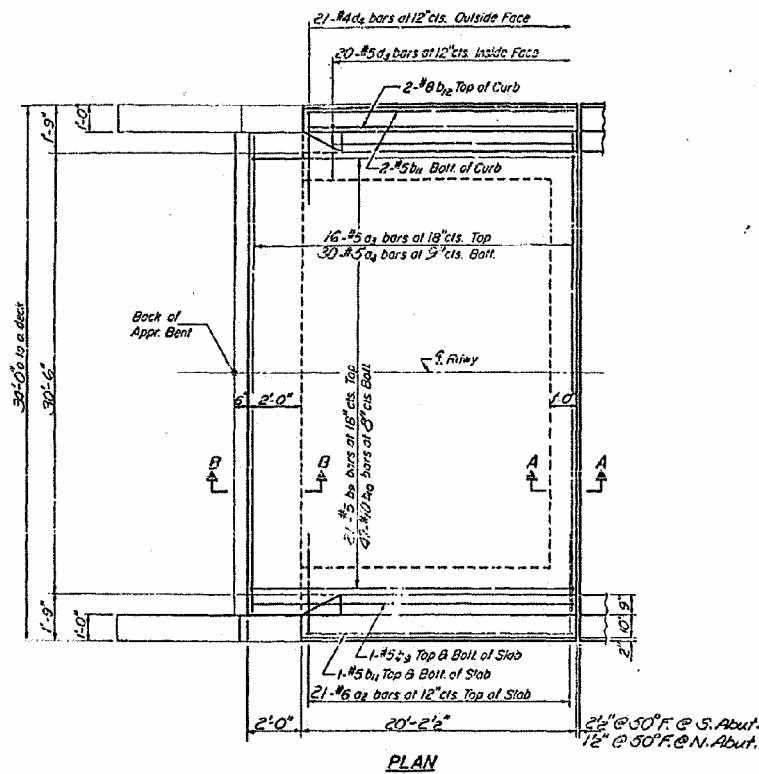


STATE OF ILLINOIS  
DEPARTMENT OF PUBLIC WORKS & BUILDINGS  
DIVISION OF HIGHWAYS

PROJECT NO.	SECTION	COUNTY	TOTAL SHEETS	SHEET NO.
2	48BR	MACON	26	15
SHEET NO. 5 16 SHEETS				



**TWO APPR. SLABS  
BILL OF MATERIAL**

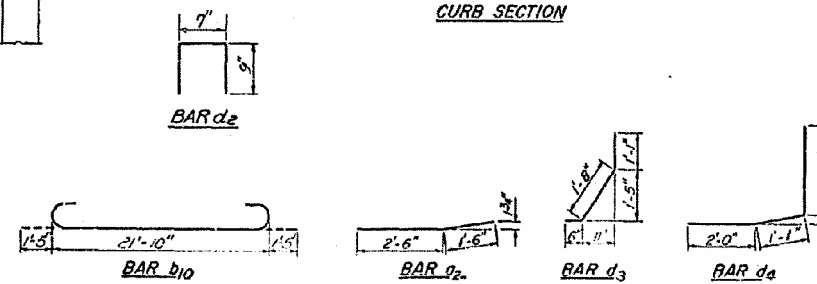
Bar	No.	Size	Length	Shape	
a <sub>2</sub>	32	#5	4'-0"	—	
a <sub>3</sub>	32	#5	3'-4 1/2"	—	
a <sub>4</sub>	60	#5	30'-3"	—	
b <sub>9</sub>	26	#5	2'-1 1/2"	—	
b <sub>10</sub>	22	#5	2'-4 1/2"	C	
b <sub>11</sub>	16	#5	20'-0"	—	
b <sub>12</sub>	2	#8	20'-0"	—	
d <sub>1</sub>	2A	#5	2'-1 1/2"	—	
d <sub>2</sub>	30	#5	3'-3"	J	
d <sub>3</sub>	34	#4	5'-8"	J	
Reinforcement Bars				Lbs.	15560
Class X Concrete				Cu. Yds.	73.0

DESIGNED: *[Signature]*  
 CHECKED: *[Signature]*  
 DRAWN: *[Signature]*  
 CHECKED: *[Signature]*

EXAMINED: *[Signature]*  
 PASSED: *[Signature]*  
 APPROVED: *[Signature]*

Dec 30 1970

SAS-0 3-1-67



\*Longitudinal Parapet Reinforcement and Class X Concrete are killed on Sheet # 7

APPROACH SPANS  
 F.A. RT. 2 SEC. 48 BR  
 MACON COUNTY  
 STATION 655+79.11W

BLANK, WESSELINK, COOK & ASSOCIATES DECATUR, ILLINOIS ENGINEERS - CONSULTANTS DESIGN FIRM NO. 184000894

FILE NAME =	USER NAME =	DESIGNED PBB	REVISOR =	STATE OF ILLINOIS DEPARTMENT OF TRANSPORTATION	EXISTING BRIDGE PLANS	F.A.P. RTE.	SECTION	COUNTY	TOTAL SHEETS	SHEET NO.
	CHECKED		REVISOR =			710	(48X-B-2)BR & (48BR)BR	MACON	144	64
	PLOT SCALE =	DRAWN MLO	REVISOR =			CONTRACT NO. 74438				
	PLOT DATE =	CHECKED	REVISOR =		SHEET NO. 26 OF 39 SHEETS	ILLINOIS FED. AID PROJECT				