

Notes:

Modular expansion joints shall be assembled in their final relative position with the ends in place for shop inspection and acceptance.

The manufacturer's recommended installation and fabrication methods shall be followed as approved by the Engineer.

Parapet plates, Sidewalk plates, shims, stools, brackets, anchorage studs, hardware and any additional reinforcement are included in the cost of Modular Expansion Joint 6".

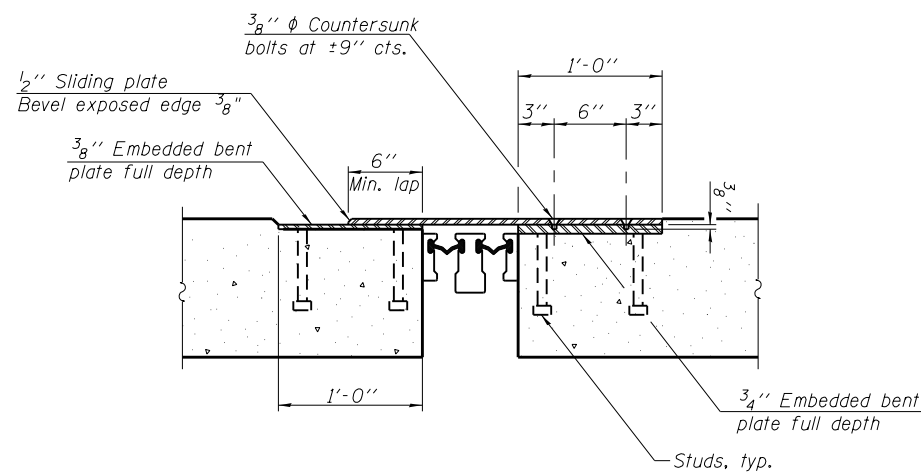
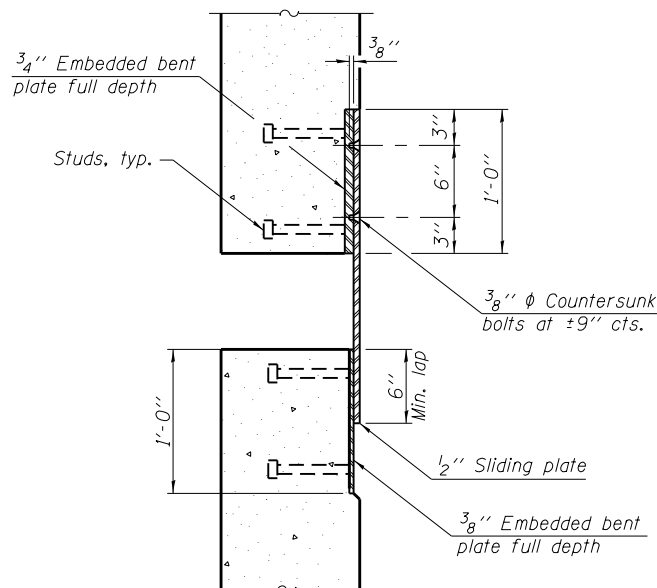
The modular expansion joint system shall be capable of handling 2 1/2" of longitudinal movement either direction from 50°F (5" total).

Support boxes shall be rigidly attached to diaphragms and backwall by adjustable brackets, stools or shims.

Prior to ordering stools or shims, the Contractor shall verify in the field all top of steel elevations.

All steel components shall be galvanized after fabrication according to Article 520.03 of the Standard Specifications.

See Guide Bridge Special Provision for Modular Expansion Joint.

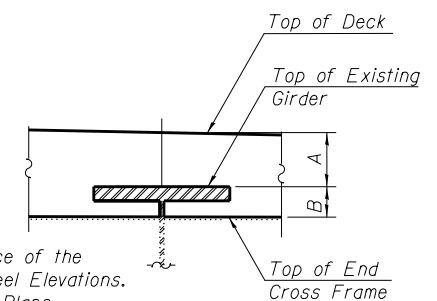


Girder Number	Dim. A	Dim. B
1	10"	3 3/4"
2	9 7/8"	5 5/8"
3	10"	5 3/8"
4	10"	3 3/8"

Notes:

Dim. A is the theoretical difference of the Proposed Deck Elev. and Top of Steel Elevations.

Dim. B is from the 1960 Existing Plans.



BILL OF MATERIAL

Item	Unit	Total
Modular Expansion Joint 6"	Foot	38

BLANK, WESSELINK, COOK & ASSOCIATES DECATUR, ILLINOIS ENGINEERS - CONSULTANTS DESIGN FIRM NO. 184000894

FILE NAME =	USER NAME =	DESIGNED PBB	REVISED -
		CHECKED MCB	REVISED -
	PLOT SCALE =	DRAWN MLO	REVISED -
	PLOT DATE =	CHECKED PBB/MCB	REVISED -

STATE OF ILLINOIS
DEPARTMENT OF TRANSPORTATION

MODULAR EXPANSION JOINT
STRUCTURE NO. 058-0010

SHEET NO. 16 OF 34 SHEETS

F.A.P. RTE.	SECTION	COUNTY	TOTAL SHEETS	SHEET NO.
710	(48X-B-2)BR & (48BR)BR	MACON	144	93
				CONTRACT NO. 74438

ILLINOIS FED. AID PROJECT