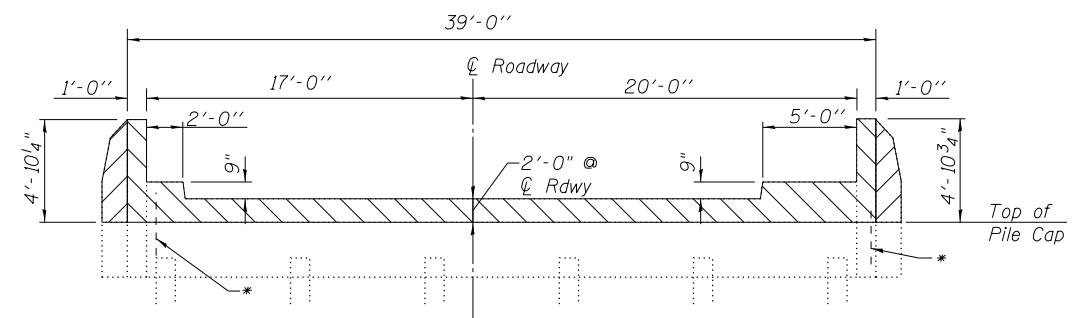
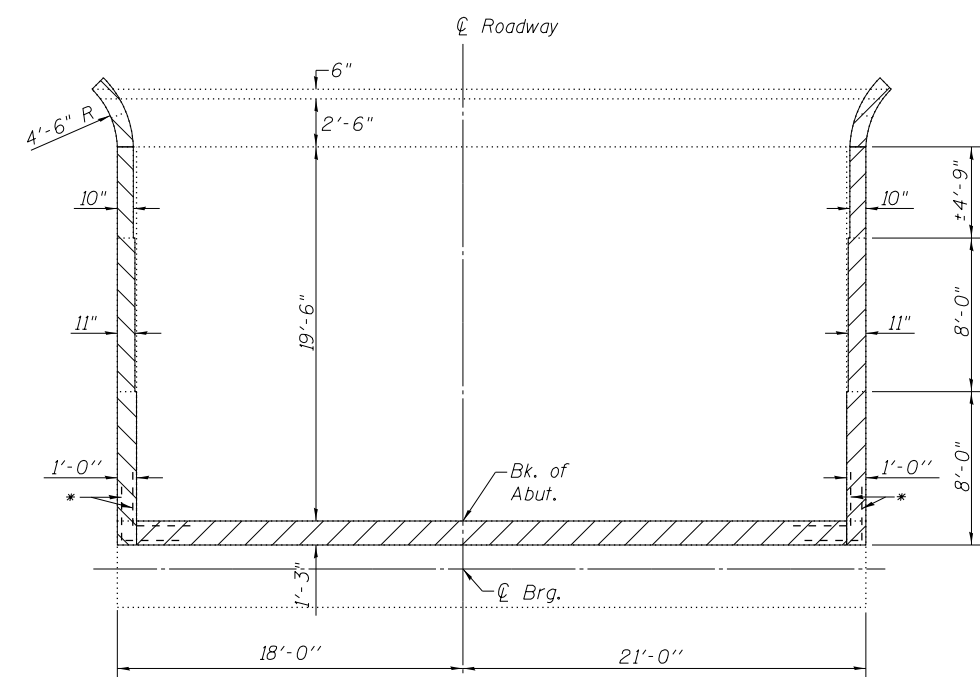


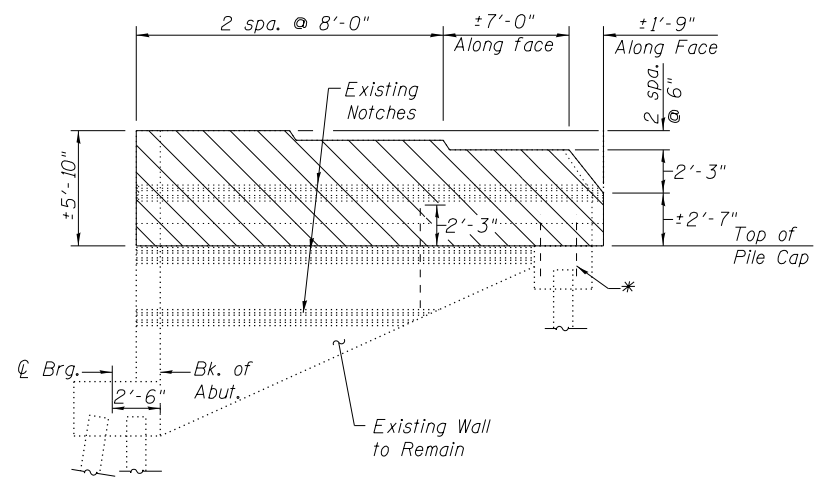
**SECTION THRU VAULTED ABUTMENT**



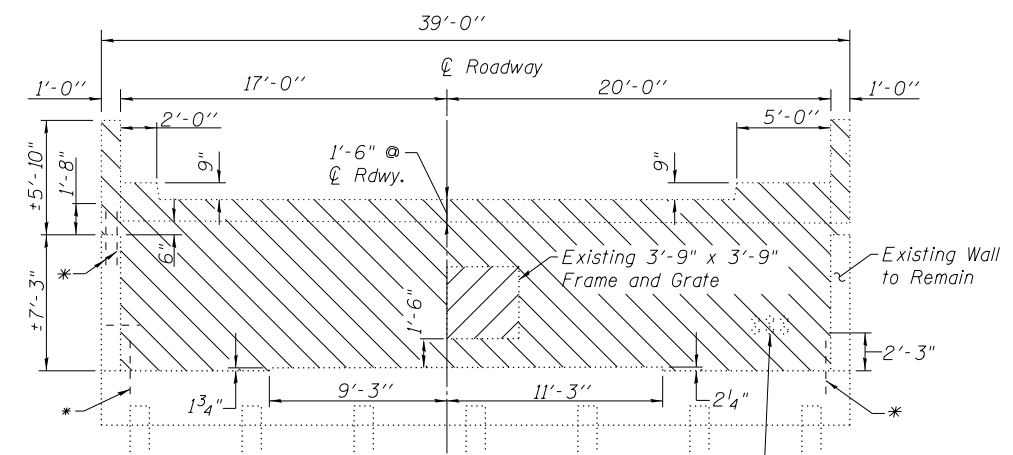
**SECTION AT APPROACH BENT**  
(N. Abut. Looking North - S. Abut. Similar)



**PLAN**  
(N. Abut. Shown - S. Abut. Similar)



**TYPICAL WING ELEVATION**



**ELEVATION**  
(N. Abut. Looking North - S. Abut. Similar)

Notes  
Hatched areas indicate Concrete Removal.  
\* Existing reinforcement extending into new construction shall be cleaned and incorporated into the new construction. Cost included with Concrete Removal.

Existing conduits and utilities in pipe sleeves shall be supported and protected during construction. Cost included with Concrete Removal.

**BILL OF MATERIAL**

ITEM	UNIT	TOTAL
Concrete Removal	Cu. Yd.	125.4

BLANK, WESSELINK, COOK & ASSOCIATES DECATUR, ILLINOIS ENGINEERS - CONSULTANTS DESIGN FIRM NO. 184000894

FILE NAME =	USER NAME =	DESIGNED PBB	REVISED -
		CHECKED MCB	REVISED -
	PLOT SCALE =	DRAWN MLO	REVISED -
	PLOT DATE =	CHECKED PBB/MCB	REVISED -

**STATE OF ILLINOIS**  
**DEPARTMENT OF TRANSPORTATION**

**CONCRETE REMOVAL DETAILS**  
**STRUCTURE NO. 058-0010**

SHEET NO. 21 OF 34 SHEETS

F.A.P. RTE.	SECTION	COUNTY	TOTAL SHEETS	SHEET NO.
710	(48X-B-2)BR & (48BR)BR	MACON	144	98
CONTRACT NO. 74438				
ILLINOIS FED. AID PROJECT				