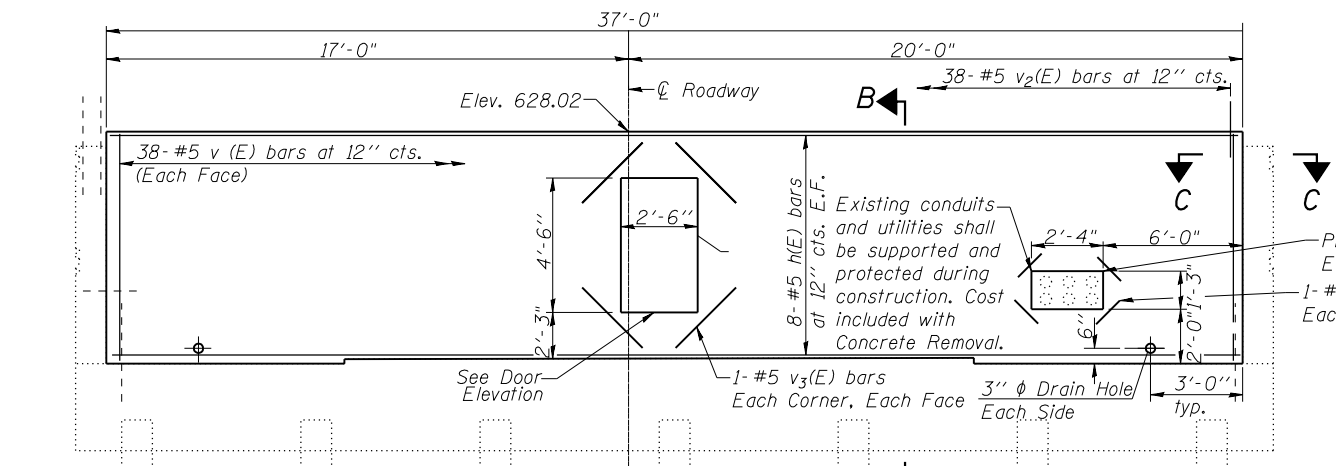
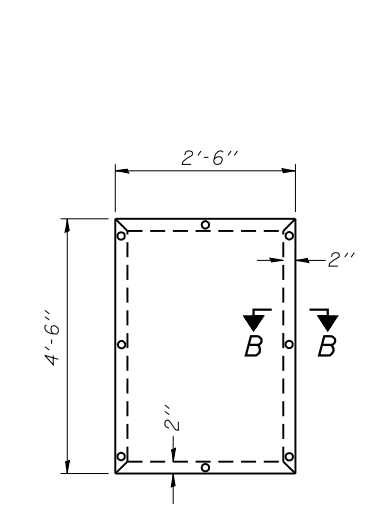


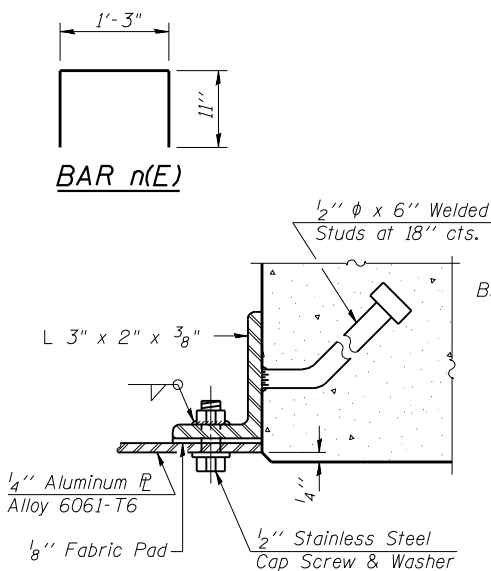
BACKWALL ELEVATION
(S. Abut. Looking South)



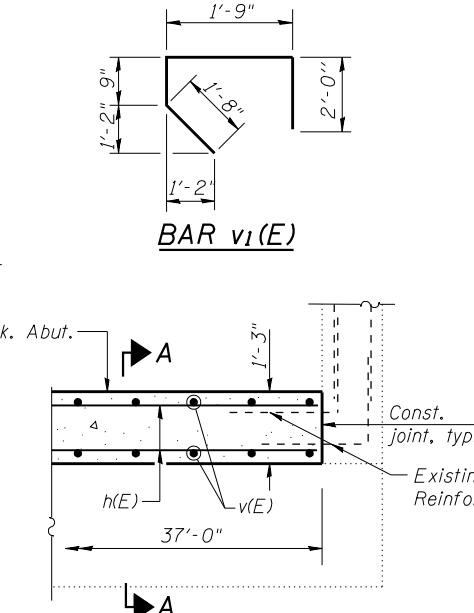
BACKWALL ELEVATION
(N. Abut. Looking North)



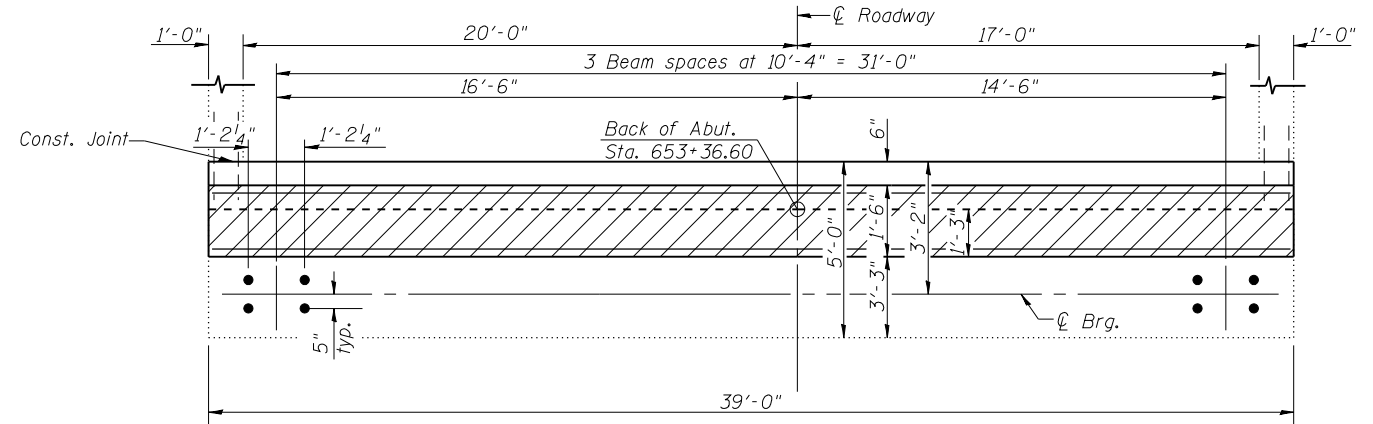
DOOR ELEVATION
Cost of door and frame are included with Concrete Structures.



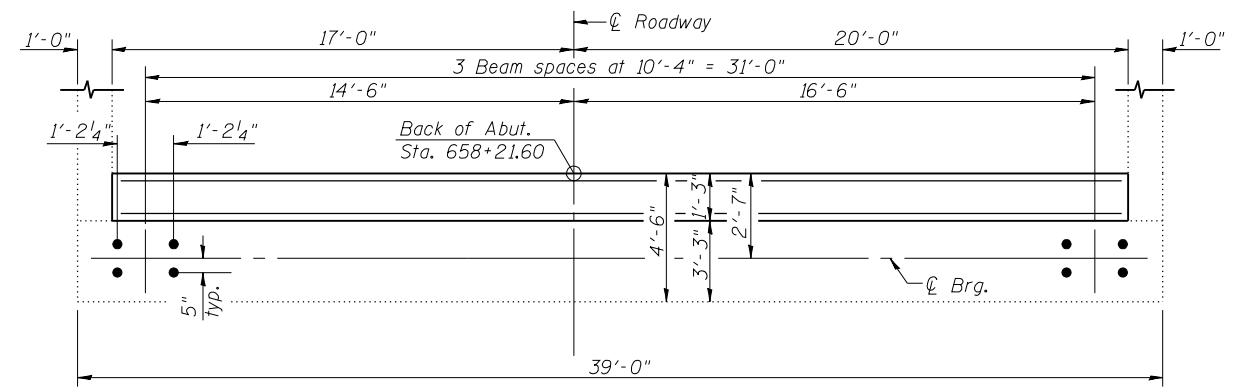
SECTION B-B



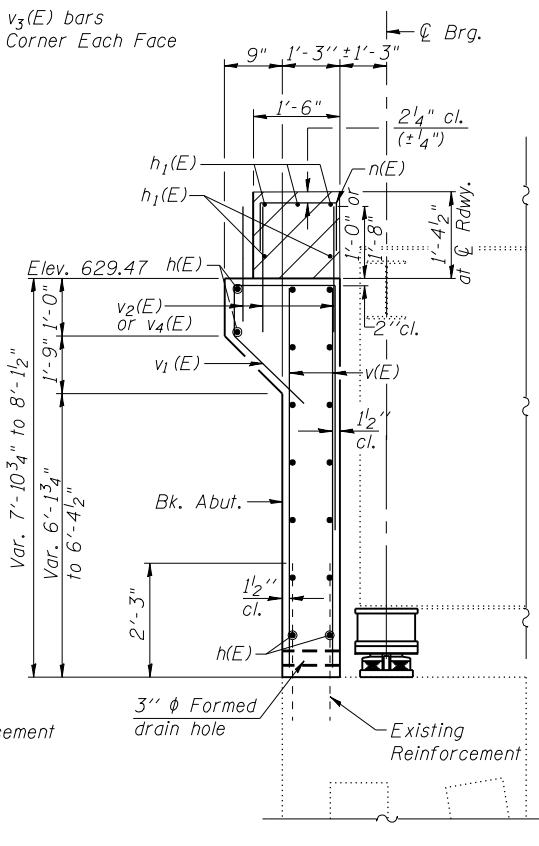
SECTION C-C



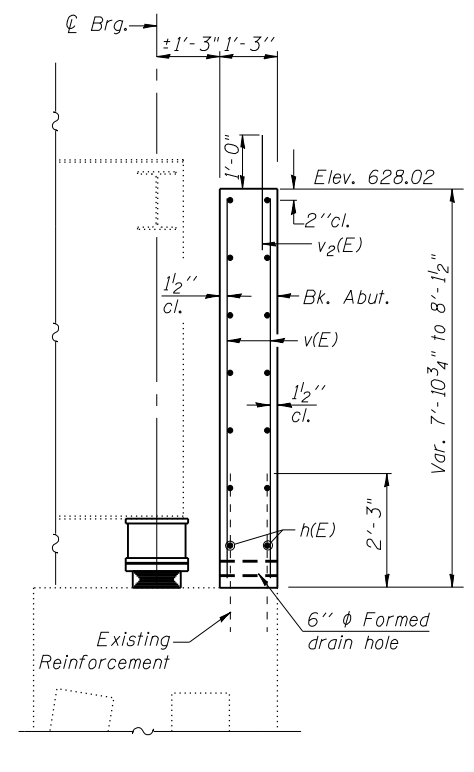
TOP VIEW
(S. Abut.)



TOP VIEW
(N. Abut.)



SECTION A-A
(S. Abut.)



SECTION B-B
(N. Abut.)

Notes:
See Sheets 12 and 13 of 34 for details of $a_2(E)$, $c(E)$, $c_2(E)$ and $d_7(E)$ - $d_9(E)$ bars.
The blockout area represented by hatching shall be poured following the installation of the modular expansion joint.
The concrete quantity for the hatch block area is included with Concrete Superstructure on Sheet 11 of 34.
Concrete Sealer shall be applied to the front face of the abutment backwall and hatched block.
Cut $v(E)$ and $h(E)$ bars at openings for door and conduit.
Existing reinforcement extending into new construction shall be cleaned and incorporated into the new construction. Cost included with Concrete Removal.

**TWO ABUTMENT BACKWALLS
BILL OF MATERIAL**

Bar	No.	Size	Length	Shape
$h(E)$	36	#5	36'-8"	—
$h_1(E)$	5	#6	38'-8"	—
$n(E)$	38	#5	3'-1"	⊏
$v(E)$	152	#5	7'-6"	—
$v_1(E)$	38	#7	6'-2"	⊏
$v_2(E)$	131	#5	2'-0"	—
$v_3(E)$	8	#5	3'-0"	—
$v_4(E)$	14	#5	2'-8"	—
Reinforcement Bars, Epoxy Coated		Pound	3,810	
Concrete Structures		Cu. Yd.	28.8	
Concrete Sealer		Sq. Ft.	686	
Structure Excavation		Cu. Yd.	1	

Note A:
420 lbs (Superstr.)
3,390 lbs (Substr.)

BLANK, WESSELINK, COOK & ASSOCIATES DECATUR, ILLINOIS ENGINEERS - CONSULTANTS DESIGN FIRM NO. 184000894

FILE NAME =	USER NAME =	DESIGNED <i>PBB</i>	REVISED -
		CHECKED <i>MCB</i>	REVISED -
		DRAWN <i>MLO</i>	REVISED -
		CHECKED <i>PBB/MCB</i>	REVISED -

**STATE OF ILLINOIS
DEPARTMENT OF TRANSPORTATION**

**ABUTMENT BACKWALL DETAILS
STRUCTURE NO. 058-0010**

SHEET NO. 22 OF 34 SHEETS

F.A.P. RTE.	SECTION	COUNTY	TOTAL SHEETS	SHEET NO.
710	(48X-B-2)BR & (48BR)BR	MACON	144	99
			CONTRACT NO. 74438	
ILLINOIS FED. AID PROJECT				