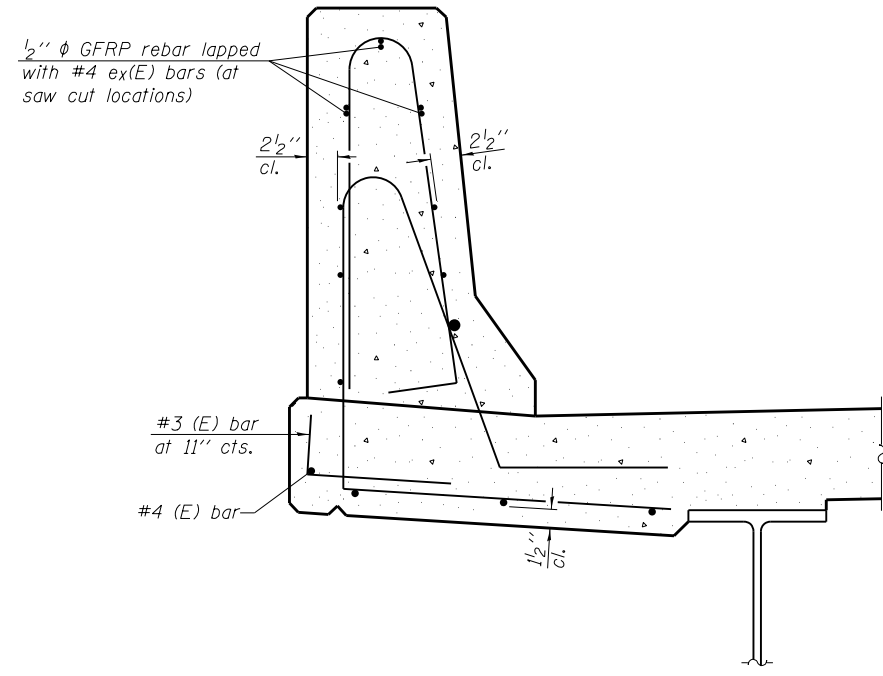


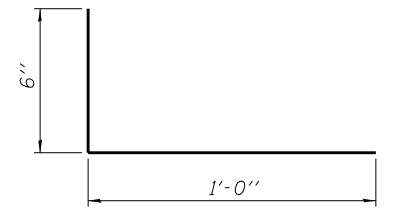
**SECTION**  
(Showing dimensions)

\* See Superstructure Details.

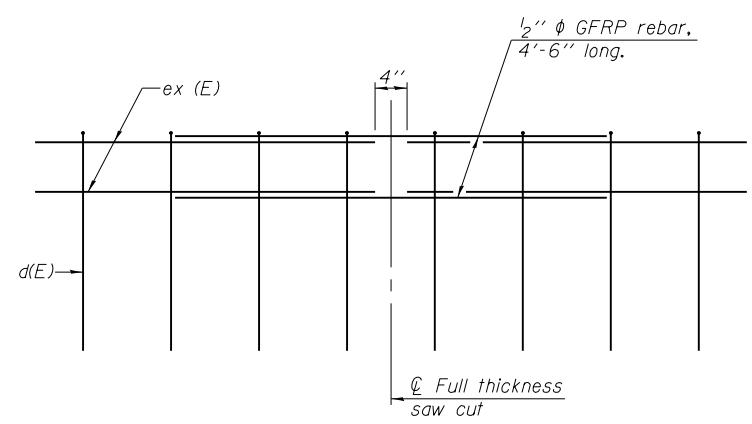


**SECTION**  
(Showing reinforcement clearances for slip forming and additional reinforcement bars)

**GENERAL NOTES**  
All dimensions shall remain the same as shown on superstructure details, except dimensions A and B which are to be revised as shown to provide additional clearance. Additional concrete needed to revise dimension A and B = 0.0165 cu. yds./ft. of parapet.  
Place aluminum sheet in curb portion at and near piers. Full thickness saw cut at all joint locations in lieu of cork joint filler.  
Steel superstructure shown. Other superstructure types similar.



**#3 (E) BAR**



**GFRP REBAR STIFFENING DETAIL**  
(Place as shown in parapet section at each parapet joint location.)

SFP-34

1-27-12

BLANK, WESSELINK, COOK & ASSOCIATES DECATUR, ILLINOIS ENGINEERS - CONSULTANTS DESIGN FIRM NO. 184000894

FILE NAME =	USER NAME =	DESIGNED <i>PBB</i>	REVISED -
		CHECKED <i>MCB</i>	REVISED -
		DRAWN <i>MLO</i>	REVISED -
		CHECKED <i>PBB/MCB</i>	REVISED -

**STATE OF ILLINOIS  
DEPARTMENT OF TRANSPORTATION**

**CONCRETE PARAPET SLIPFORMING OPTION  
STRUCTURE NO. 058-0010**

F.A.P. RTE.	SECTION	COUNTY	TOTAL SHEETS	SHEET NO.
710	(48X-B-2)BR & (48BR)BR	MACON	144	100
CONTRACT NO. 74438				

SHEET NO. 23 OF 34 SHEETS

ILLINOIS FED. AID PROJECT