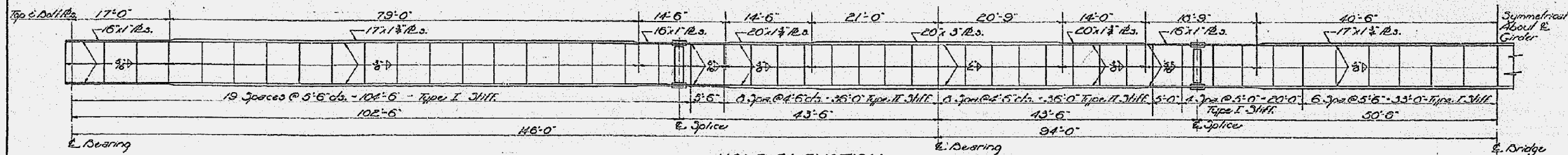
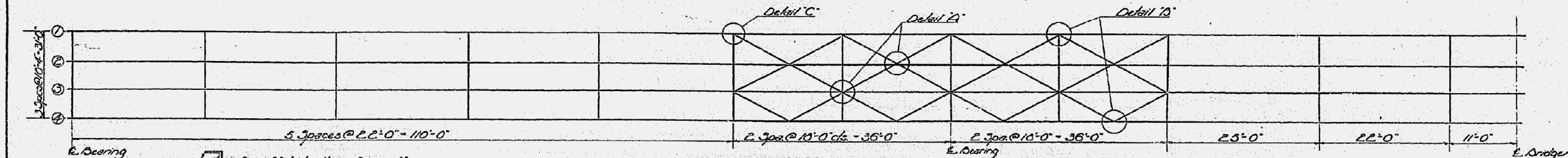


STATE OF ILLINOIS
DEPARTMENT OF PUBLIC WORKS & BUILDINGS
DIVISION OF HIGHWAYS

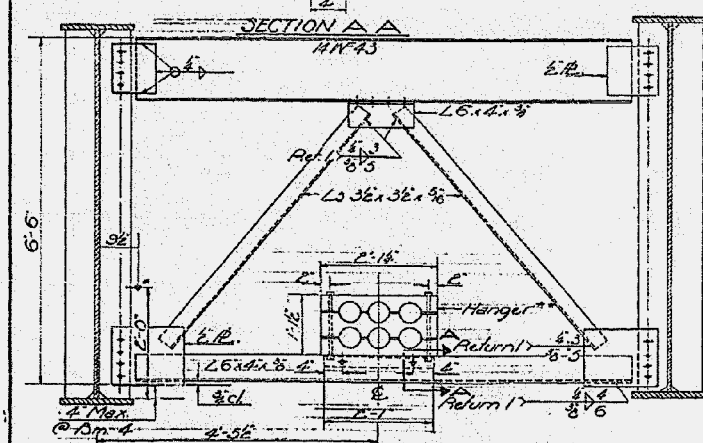
PROJECT NO.	SECTION	COUNTY	TOTAL SHEETS	SHEET NO.
A.S. 2	48X-B-2	Macon	37	13
P.A.	515-52		11	20
FILE NAME	CONTRACT NO. 74438			



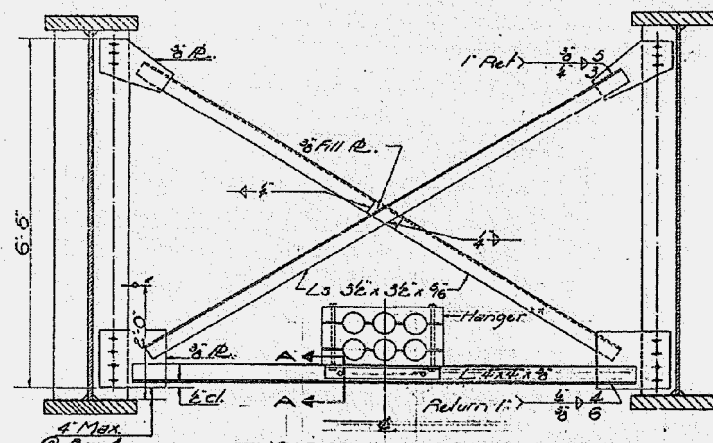
HALF ELEVATION



HALF FRAMING PLAN



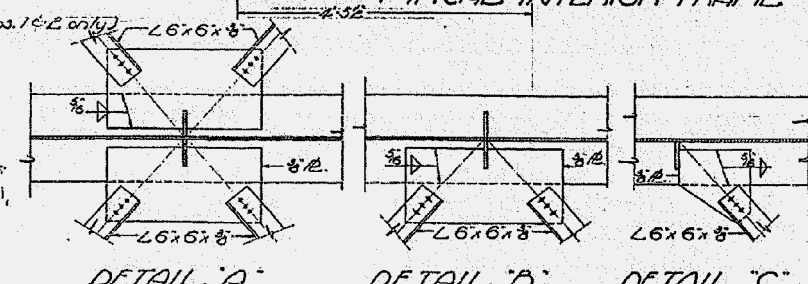
TYPICAL END FRAME



TYPICAL INTERIOR FRAME

Note: Telephone Hangers to be placed between bms. 16'-0" only.
The electrical contractor shall provide a 3/8" welded fastener at each of the inside stiffeners of the outside beams, subject to approval of the Engineer.

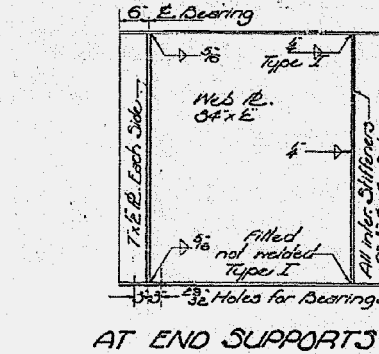
DESIGNED	W.S. Beiswenger	EXAMINED	W.S. Beiswenger
CHECKED	D. Weimull	PASSED	T. Shultz
DRAWN	G.R. W.L. Jacobs	APPROVED	R.H. Beiswenger
CHECKED			



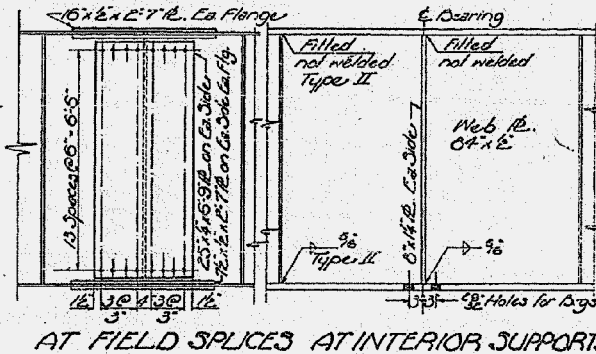
DETAIL 'A'

DETAIL 'B'

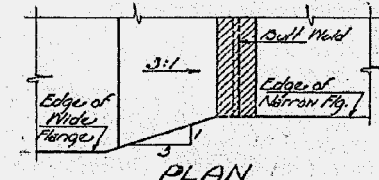
DETAIL 'C'



AT END SUPPORTS

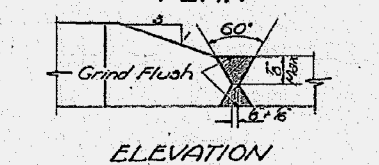


AT FIELD SPLICES AT INTERIOR SUPPORTS



PLAN

PLAN-FLANGE PL. GIRDER DETAILS



ELEVATION

TYPICAL FLANGE BUTT WELD

FRAMING DETAILS
S.B.T. RT. 2 - SEC. 48X-DE
MACON COUNTY 4
STA. 655 + 79.1

Revised: Added Telephone Hangers in Typical End & Interior Frame Details. 9/9/60. G.R.

BLANK, WESSELINK, COOK & ASSOCIATES

DECATUR, ILLINOIS

ENGINEERS - CONSULTANTS

DESIGN FIRM NO. 184000894

FILE NAME	
USER NAME	
PLOT SCALE	
PLOT DATE	

DESIGNED	PBB	REVISED	-
CHECKED	MCB	REVISED	-
DRAWN	MLO	REVISED	-
CHECKED	PBB/MCB	REVISED	-

STATE OF ILLINOIS
DEPARTMENT OF TRANSPORTATION

EXISTING BRIDGE PLANS

SHEET NO. 28 OF 34 SHEETS

F.A.P. RTE.	SECTION	COUNTY	TOTAL SHEETS	SHEET NO.
710	(48X-B-2)BR & (48BR)BR	MACON	144	105
CONTRACT NO. 74438				
ILLINOIS FED. AID PROJECT				