

STATE OF ILLINOIS
DEPARTMENT OF TRANSPORTATION
DIVISION OF HIGHWAYS

PLANS FOR PROPOSED
HIGHWAY IMPROVEMENT

FAS ROUTE 858 (ROOTS ROAD)
SECTION 12VB-1I
PROJECT: ACBS-0858(300)
RANDOLPH COUNTY

BRIDGE REHABILITATION

C-98-045-05

F.A.S. RTE.	SECTION	COUNTY	TOTAL SHEETS	SHEET NO.
858	12VB-1I	RANDOLPH	72	1
FED. ROAD DIST. NO.		ILLINOIS	CONTRACT NO. 76409	

* 72 + 2 = 74

D-98-026-05



LOCATION OF SECTION INDICATED THUS: -

FOR INDEX OF SHEETS, SEE SHEET NO. 2

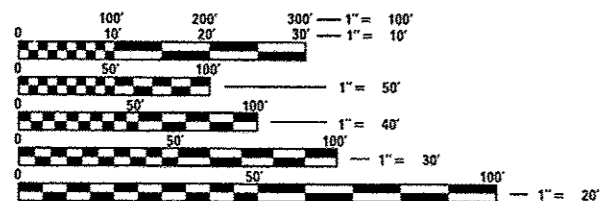
SECTION 12VB-1I INCLUDES THE REMOVAL AND REPLACEMENT OF THE EXISTING CONCRETE DECK ON THE EXISTING STEEL BEAMS AND SUBSTRUCTURE UNITS FOR THE STRUCTURE CARRYING ROOTS ROAD OVER UNION PACIFIC RAILROAD. THIS WORK ALSO INCLUDES RECONSTRUCTION OF THE BRIDGE APPROACH SLABS.
STA. 650+10.50
SN 079-0020

SECTION 12VB-1I BEGINS STA 624+34.70

SECTION 12VB-1I INCLUDES BRIDGE REPAIRS FOR THE STRUCTURE CARRYING ROOTS ROAD OVER THE KASKASKIA RIVER
STA. 631+60.00
SN 079-0019

SECTION 12VB-1I ENDS STA 652+10.00

RESURFACING OMISSION STA. 638+84.70 TO STA 648+11.00



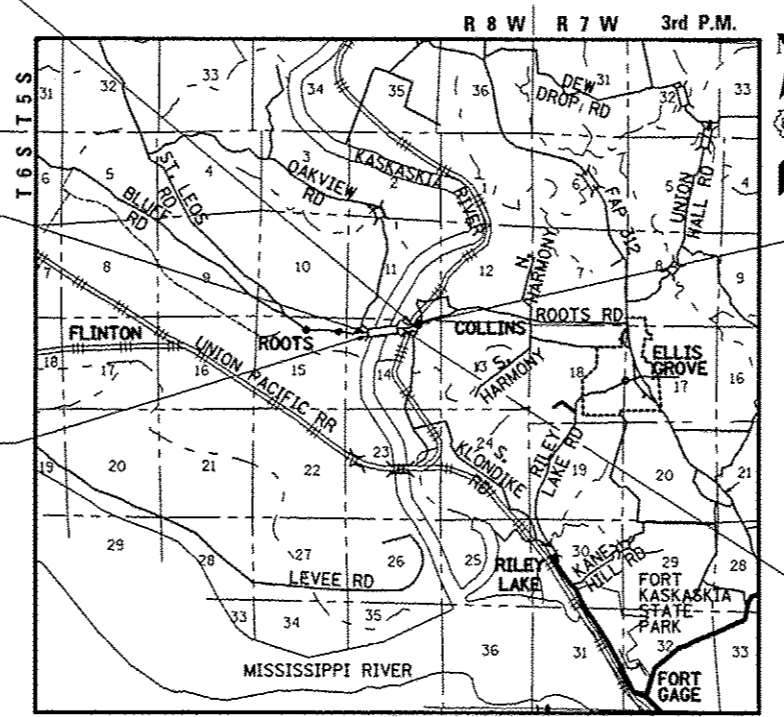
FULL SIZE PLANS HAVE BEEN PREPARED USING STANDARD ENGINEERING SCALES. REDUCED SIZED PLANS WILL NOT CONFORM TO STANDARD SCALES. IN MAKING MEASUREMENTS ON REDUCED PLANS, THE ABOVE SCALES MAY BE USED.

J.U.L.I.E.
JOINT UTILITY LOCATION INFORMATION FOR EXCAVATION
1-800-892-0123
OR 811

PROJECT ENGINEER: PATTI LEBEAU (618) 346-3179
PROJECT MANAGER: HERVE GELIN (618) 346-3323

CONTRACT NO. 76409

ADT: 475 (2012) COLLECTOR
ADT: 975 (2023)
13.3% TRUCKS



LOCATION MAP
ELLIS GROVE TOWNSHIP
GRAPHIC SCALE IN MILES

GROSS SECTION LENGTH = 2775.30 FEET = 0.525 MILES
OMISSION LENGTH = 926.30 FEET = 0.175 MILES
NET SECTION LENGTH = 1850.00 FEET = 0.350 MILES

LATITUDE	38°01' 0.13"	LONGITUDE	89°57' 34.11"
	38°01' 2.98"		89°57' 2.40"



Brian R. Mueller 02-18-2014
ILLINOIS PROFESSIONAL ENGINEER NO. 062-052018 DATE
EXP. 11-30-2015

STATE OF ILLINOIS
DEPARTMENT OF TRANSPORTATION
DIVISION OF HIGHWAYS

SUBMITTED June 27, 2014
Jeffrey Z. Keane
DEPUTY DIRECTOR OF HIGHWAYS, REGION 5 ENGINEER

Aug 15, 2014
John D. Baranzelle PE
ENGINEER OF DESIGN AND ENVIRONMENT

Aug 15, 2014
Omer Osman PE
DIRECTOR OF HIGHWAYS, CHIEF ENGINEER



BERNARDIN * LOCHMUELLER & ASSOCIATES, INC.
3 OAK DRIVE
MARYVILLE, ILLINOIS 62062
PHONE (618) 288-4665
FAX (618) 288-4666

PRINTED BY THE AUTHORITY
OF THE STATE OF ILLINOIS