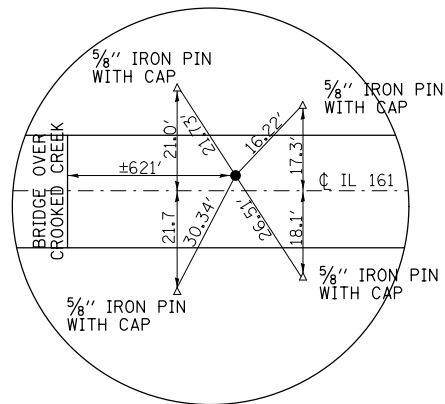
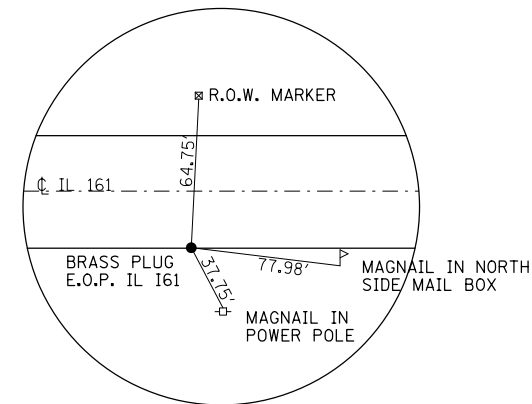


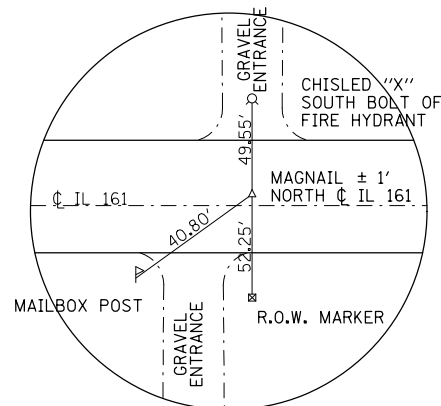
NORTH QUARTER CORNER  
SECTION 14  
(MAP ITEM 'G')



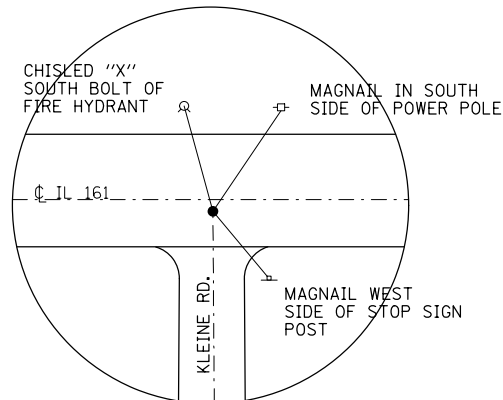
NORTH QUARTER CORNER  
SECTION 15  
(MAP ITEM 'F')



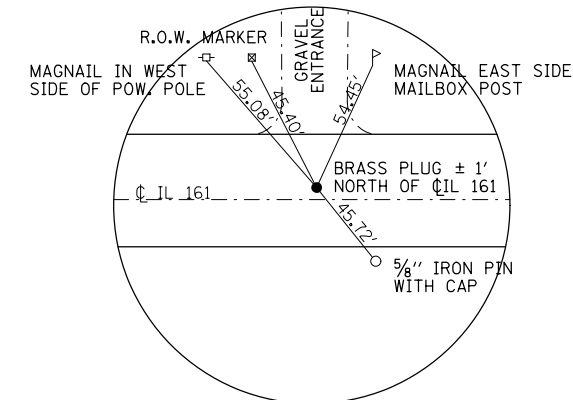
SOUTH QUARTER CORNER  
SECTION 15  
(MAP ITEM 'E')



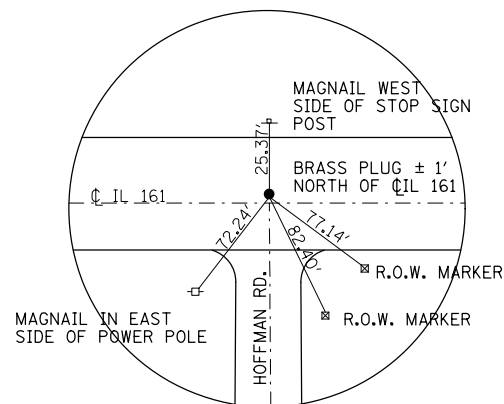
NORTH QUARTER CORNER  
SECTION 16  
(MAP ITEM 'D')



NORTHEAST CORNER  
SECTION 18  
(MAP ITEM 'C')



NORTH QUARTER CORNER  
SECTION 18  
(MAP ITEM 'B')



NORTHWEST CORNER  
SECTION 13  
(MAP ITEM 'A')

FILE NAME =	USER NAME = dntelmanjn	DESIGNED -	REVISED -
et:\pw\work\p\dot\dntelmanjn\d0332010\0876631-shr-plan.dgn		DRAWN -	REVISED -
	PLOT SCALE = 100.0000' / in.	CHECKED -	REVISED -
	PLOT DATE = 6/25/2014	DATE -	REVISED -

**STATE OF ILLINOIS**  
**DEPARTMENT OF TRANSPORTATION**

**TIE POINTS FOR SURVEY MONUMENTS**

SCALE: SHEET NO. 1 OF 2 SHEETS STA. TO STA.

F.A.P. RTE.	SECTION	COUNTY	TOTAL SHEETS	SHEET NO.
805	3RS-1,(5,7-1)RS-3	CLINTON	26	25
CONTRACT NO. 76G31				
FED. ROAD DIST. NO. ILLINOIS FED. AID PROJECT				