

STATE OF ILLINOIS
DEPARTMENT OF TRANSPORTATION
DIVISION OF HIGHWAYS

**PROPOSED
HIGHWAY PLANS**

FAP ROUTE 726 (IL 148)
SECTION 119(RS-1); 126(RS-11)

RESURFACING 3P
FRANKLIN COUNTY

F.A.P. RTE.	SECTION	COUNTY	TOTAL SHEETS	SHEET NO.
726	119(RS-1), 126(RS-11)	FRANKLIN	24	1
		ILLINOIS	CONTRACT NO. 78181	

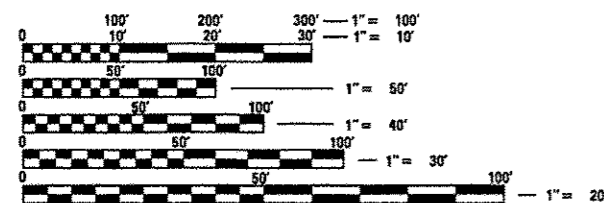
FOR INDEX OF SHEETS, SEE SHEET NO. 3

STATION EQUATIONS
120+24.65 (N) BK = 120+36.29 (N) AH
0+00 (N) = 0+00 (S)

IL 148 (FAP 726)
TRAFFIC DATA

	(2014)	(2034)
PV =	5,300	6,470
SU =	180	220
MU =	380	460
ADT =	5,860	7,150

TOWNSHIP
GOODE

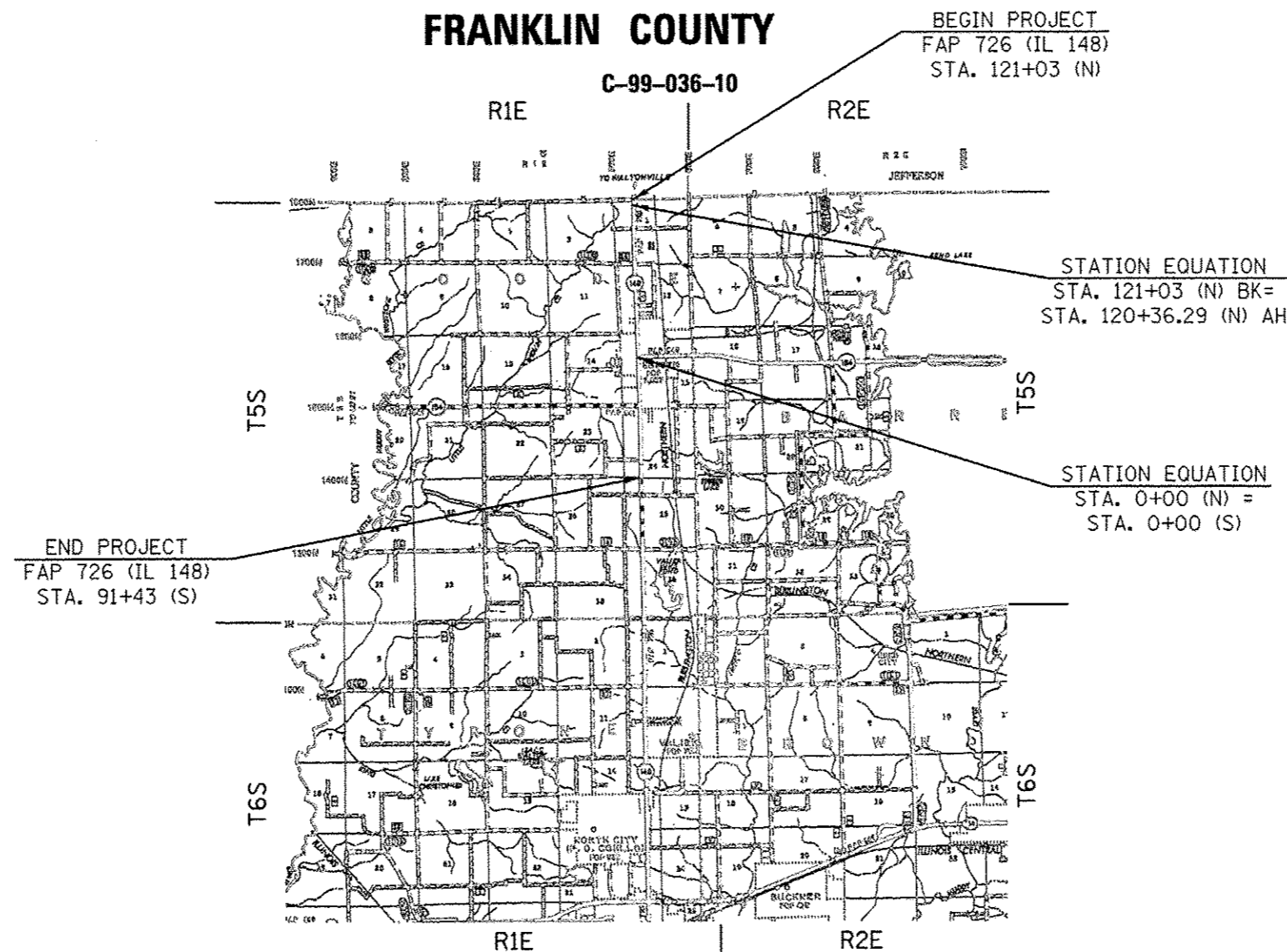


FULL SIZE PLANS HAVE BEEN PREPARED USING STANDARD ENGINEERING SCALES. REDUCED SIZED PLANS WILL NOT CONFORM TO STANDARD SCALES. IN MAKING MEASUREMENTS ON REDUCED PLANS, THE ABOVE SCALES MAY BE USED.

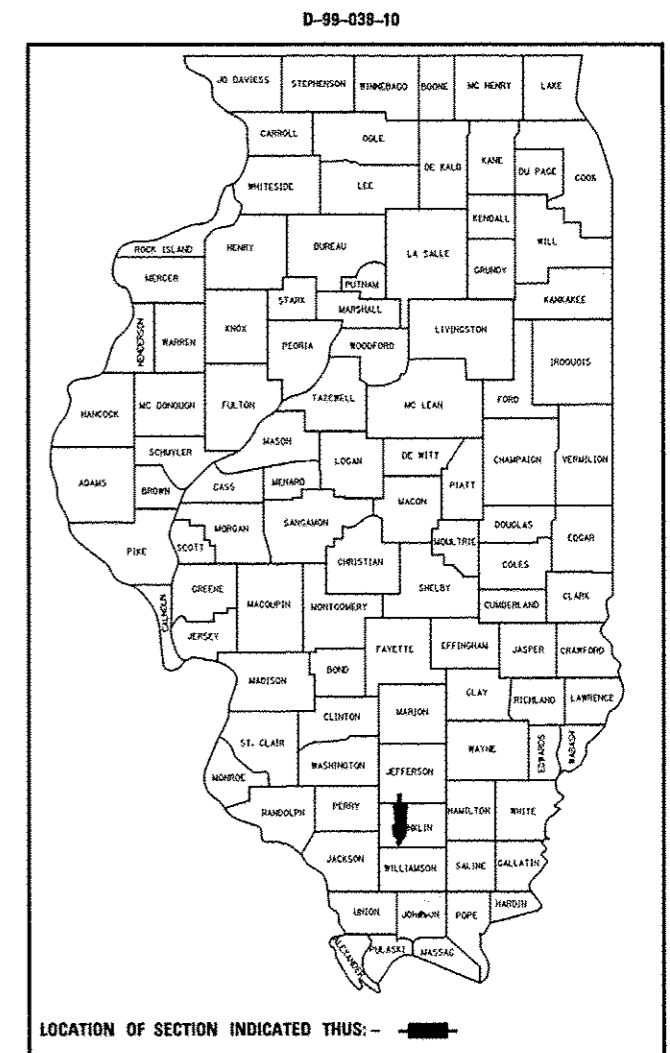
J.U.L.I.E.
JOINT UTILITY LOCATION INFORMATION FOR EXCAVATION
1-800-892-0123
OR 811

PROJECT ENGINEER: CHARLES STEIN
DESIGNER: PAULA STOVER

CONTRACT NO. 78181



GROSS LENGTH = 21,258 FT. = 4.03 MILE
NET LENGTH = 21,258 FT. = 4.03 MILE



STATE OF ILLINOIS
DEPARTMENT OF TRANSPORTATION
DIVISION OF HIGHWAYS

SUBMITTED July 7, 2014
Jeffrey L. Keim
 DEPUTY DIRECTOR OF HIGHWAYS, REGION ENGINEER

Aug 15, 2014
John D. Baranzelli, P.E.
 ENGINEER OF DESIGN AND ENVIRONMENT

Aug 15, 2014
Orner Osman, P.E.
 DIRECTOR OF HIGHWAYS, CHIEF ENGINEER

PRINTED BY THE AUTHORITY
OF THE STATE OF ILLINOIS