

STATE OF ILLINOIS
DEPARTMENT OF TRANSPORTATION
DIVISION OF HIGHWAYS
PROPOSED
HIGHWAY PLANS

F.A.P. RTE.	SECTION	COUNTY	TOTAL SHEETS	SHEET NO.
885	7RS-3,6RS-7	POPE/HARDIN	28	1
		ILLINOIS	CONTRACT NO. 78339	

FOR INDEX OF SHEETS, SEE SHEET NO. 3

ADT - 1617 (2014)
 PV = 1434
 MU = 31
 SU = 152
 TRUCK = 11%

EQUATION STATIONS:

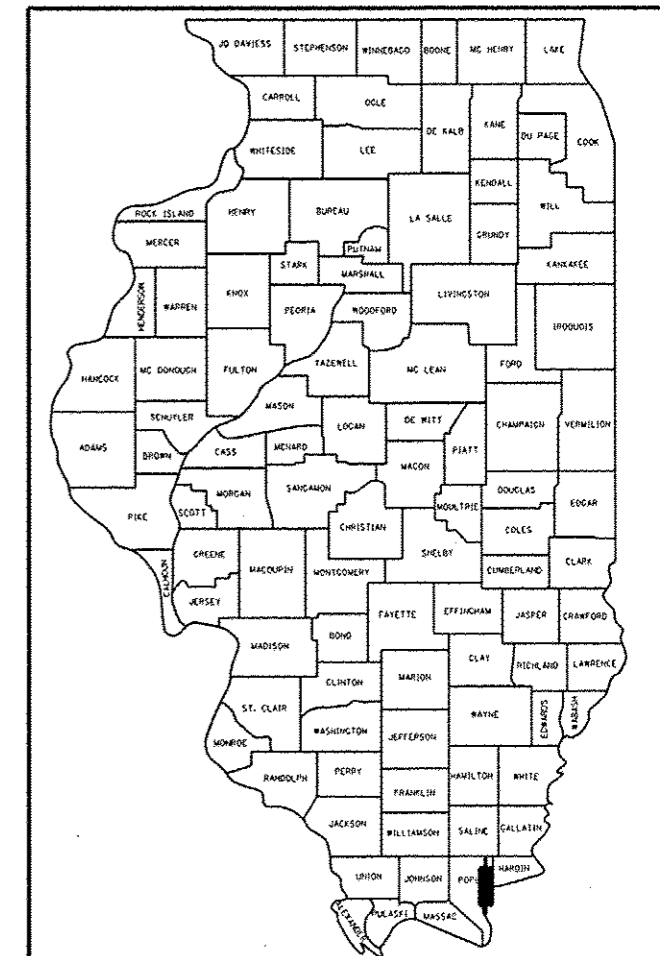
Eq. Sta. 11+05.80 (BK) = Sta. 1188+43.20 (AH)
 Eq. Sta. 1236+95.78 (BK) = Sta. 1240+34.48 (AH)
 Eq. Sta. 1254+76.55 (BK) = Sta. 1254+66.55 (AH)
 Eq. Sta. 1274+14.98 (BK) = Sta. 1274+02.49 (AH)
 Eq. Sta. 1292+05.50 (BK) = Sta. 1292+20.63 (AH)
 Eq. Sta. 1312+98.58 (BK) = Sta. 1312+94.18 (AH)
 Eq. Sta. 1367+91.97 (BK) = Sta. 1367+92.48 (AH)
 Eq. Sta. 1386+99.52 (BK) = Sta. 1387+09.36 (AH)
 Eq. POT Sta. 1450+08.70 (BK) = Sta. 1450+00.0 (AH)
 Eq. Sta. 1499+08.35 (BKK) = Sta. 1499+11.44 (AH)
 Eq. POT Sta. 1622+09.07 (BK) = Sta. 1604A+60.25 (AH)
 Eq. POT Sta. 1623A+00.0 (BK) = Sta. 1623+00.0 (AH)
 Eq. Sta. 1625+29.34 (BK) = Sta. 1625+31.55 (AH)
 Eq. Sta. 1643+40.63 (BK) = Sta. 1643+63.79 (AH)
 Eq. Sta. 1653+03.96 (BK) = Sta. 1652+88.05 (AH)
 Eq. Sta. 1665+62.18 (BK) = Sta. 1667+09.59 (AH)
 Eq. Sta. 1674+17.61 (BK) Adams St./IL 146 =
 Sta. 1266+34.00 (AH) Main St./IL 146 =

FAP ROUTE 885 (IL 146)
SECTION 7RS-3,6RS-7

3P RESURFACING
POPE & HARDIN COUNTIES

C-99-015-13

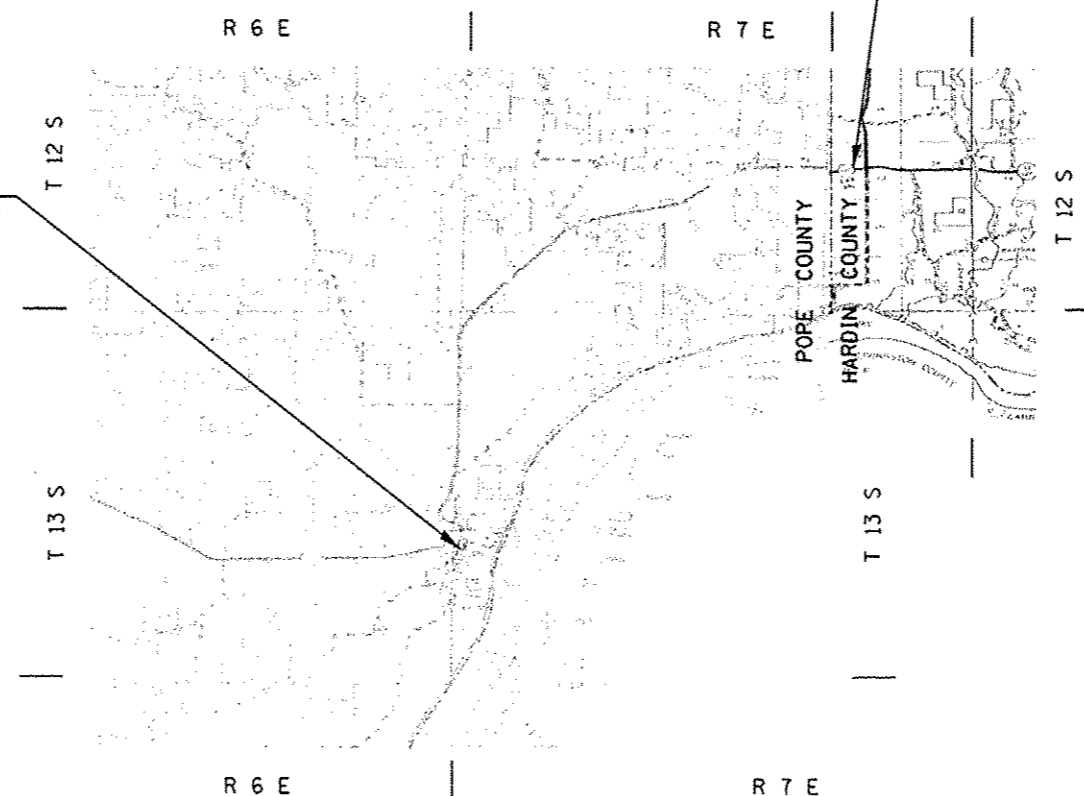
D-99-013-13



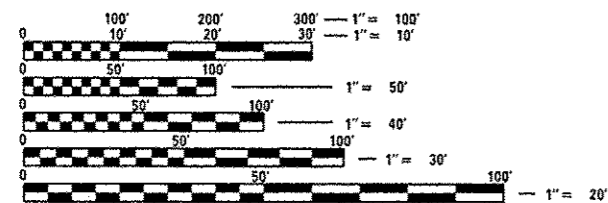
LOCATION OF SECTION INDICATED THUS: - [black rectangle] -

PROPOSED PROJECT ENDS
 STA. 1266+10 (BUTT JOINT)

PROPOSED PROJECT BEGINS
 STA. 9+79.61 (BUTT JOINT)



TOWNSHIPS: GOLCONDA, COLUMBUS & WEBSTER



FULL SIZE PLANS HAVE BEEN PREPARED USING STANDARD ENGINEERING SCALES. REDUCED SIZED PLANS WILL NOT CONFORM TO STANDARD SCALES. IN MAKING MEASUREMENTS ON REDUCED PLANS, THE ABOVE SCALES MAY BE USED.

J.U.L.I.E.
 JOINT UTILITY LOCATION INFORMATION FOR EXCAVATION
 1-800-892-0123
 OR 811

PROJECT ENGINEER: CHARLES STEIN (618)351-5210
 PROJECT MANAGER: KATHI MCCORD (618)351-5319

CONTRACT NO. 78339

GROSS LENGTH = 49,984.87 FT. = 9.47 MILE
 NET LENGTH = 48,244.33 FT. = 9.14 MILE

STATE OF ILLINOIS
 DEPARTMENT OF TRANSPORTATION
 DIVISION OF HIGHWAYS

SUBMITTED June 26, 2014
Jeffrey L. Keen
 DEPUTY DIRECTOR OF HIGHWAYS, REGION ENGINEER

Aug 15, 2014
John D. Baranzelli, PE
 ENGINEER OF DESIGN AND ENVIRONMENT

Aug 15, 2014
Omer Osman, PE
 DIRECTOR OF HIGHWAYS, CHIEF ENGINEER

PRINTED BY THE AUTHORITY
OF THE STATE OF ILLINOIS