

STATE OF ILLINOIS
DEPARTMENT OF TRANSPORTATION

F.A.U. RTE.	SECTION	COUNTY	TOTAL SHEETS	SHEET NO.
3506	2024-980-TR	LAKE	21	1
		ILLINOIS	CONTRACT NO. 62X00	

PROJECT IS LOCATED IN THE
CITY OF HIGHLAND PARK

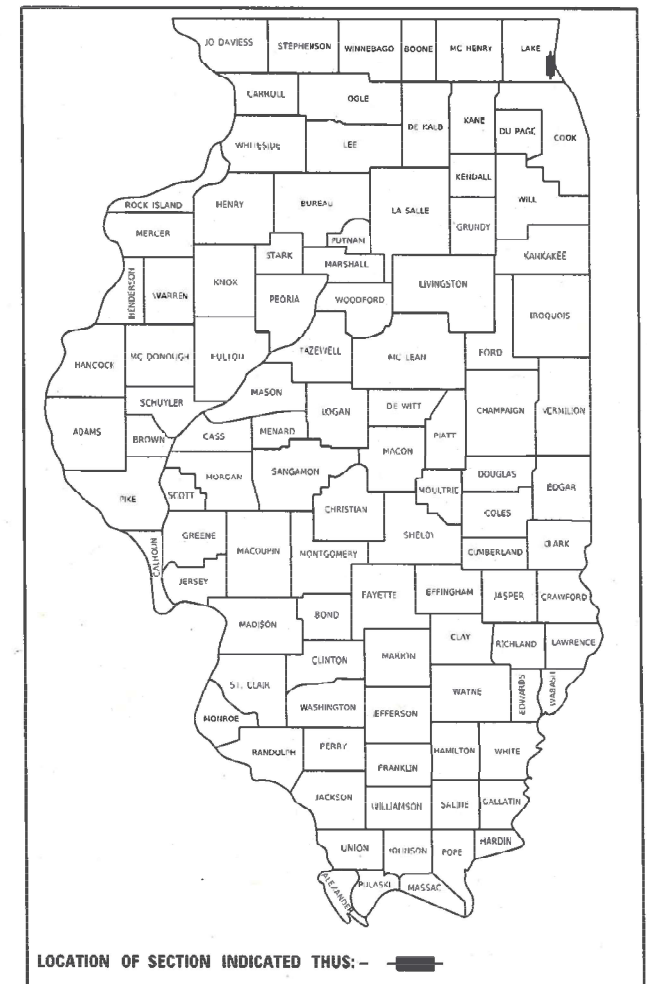
FOR INDEX OF SHEETS, SEE SHEET NO. 2

PROPOSED HIGHWAY PLANS

FAU ROUTE 3506 (SHERIDAN ROAD)
SECTION: 2024-980-TR
PROJECT: SHERIDAN RD OVER TWO CREEKS
TREE REMOVAL
LAKE COUNTY

C-91-280-24

D-91-216-24



DESIGN DESIGNATION

MAJOR COLLECTOR

TRAFFIC DATA

SHERIDAN RD: 2023 ADT 2850

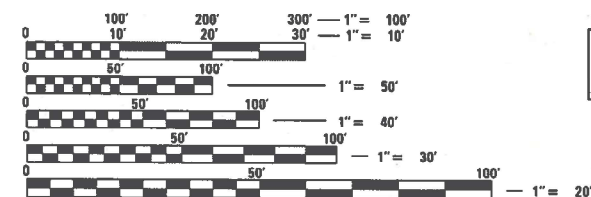
SPEED LIMIT

DESIGN SPEED: 35 MPH
POSTED SPEED: 30 MPH

PROJECT LOCATION 2
SHERIDAN RD.
STA 122+40.00 TO STA 127+00.00
EXISTING CULVERT (SN: 049-0596)
ROSEWOOD BEACH ACCESS
STA 300+00.00 TO STA 300+82.78

PROJECT LOCATION 1
SHERIDAN RD.
STA 104+29.66 TO STA 109+40.00
EXISTING CULVERT (SN: 049-0595)

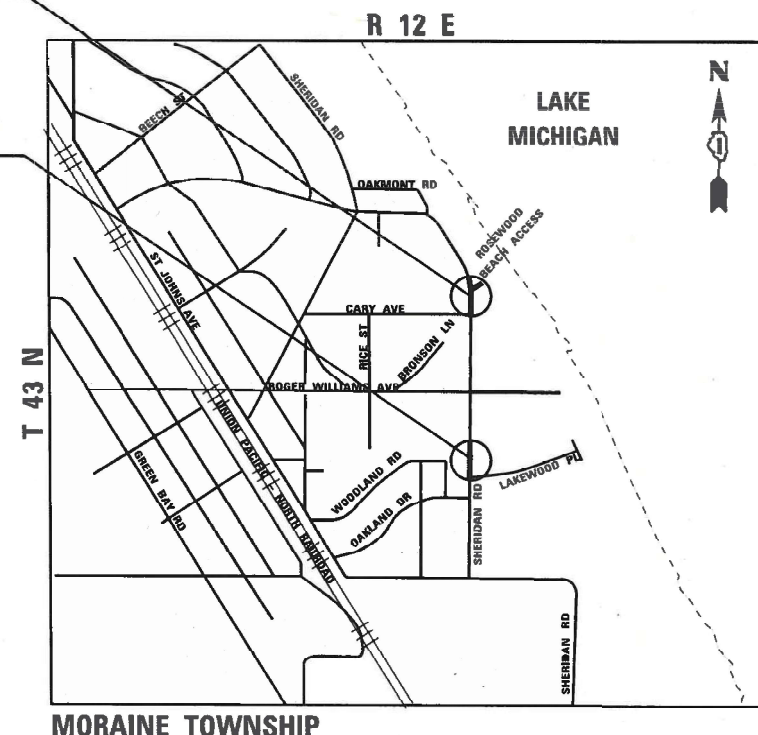
SHERIDAN ROAD OMISSION
STA 109+40.00 TO STA 122+40.00



FULL SIZE PLANS HAVE BEEN PREPARED USING STANDARD
ENGINEERING SCALES. REDUCED SIZED PLANS WILL NOT
CONFORM TO STANDARD SCALES. IN MAKING MEASUREMENTS
ON REDUCED PLANS, THE ABOVE SCALES MAY BE USED.

J.U.L.I.E.
JOINT UTILITY LOCATION INFORMATION FOR EXCAVATORS
1-800-892-0123
OR 811

PROJECT ENGINEER: MUSAB SHUAYYAT
T: 847-705-4269
PROJECT MANAGER: DARPIT SHAH
T: 847-705-4755
CONTRACT NO. 62X00



LOCATION MAP
NOT TO SCALE

GROSS LENGTH = 2353 FT. = 0.45 MILE
NET LENGTH = 1053 FT. = 0.20 MILE



Mohsen Farahany
DATE: 08-30-2025

Mohsen M. Farahany
Rubinos & Mesia Engineers
Licensed Professional Engineer
State of Illinois
Lic. No. 062-43875
Expires: 11-30-2025

SHEETS: 1 TO 4, 6 TO 9 AND 13 TO 21

RME Rubinos &
Mesia
Engineers, Inc.
200 S. Michigan Avenue, Suite 1500, Chicago, IL 60604-2482



Eric P. Spina

CiorbaGroup

SHEETS: 5 AND 10 TO 12

STATE OF ILLINOIS
DEPARTMENT OF TRANSPORTATION

SUBMITTED July 2nd 2025
Arbors IR
REGIONAL ENGINEER
August 15 2025
Sec. E. E. E.
ENGINEER OF DESIGN AND ENVIRONMENT
August 15 2025
Arbors
DIRECTOR OF HIGHWAYS PROJECT IMPLEMENTATION

PRINTED BY THE AUTHORITY
OF THE STATE OF ILLINOIS

INDEX OF SHEETS

SHEET NO.	DESCRIPTION
1	COVER SHEET
2	INDEX OF SHEETS, HIGHWAY STANDARDS, GENERAL NOTES
3	SUMMARY OF QUANTITIES
4 - 5	SCHEDULE OF QUANTITIES
6 - 7	ALIGNMENT, TIES AND BENCHMARKS
8	TREE REMOVAL PLANS - PROJECT LOCATION 1
9	TREE REMOVAL PLANS - PROJECT LOCATION 2
10 - 12	TREE REMOVAL PLANS - CITY OF HIGHLAND PARK
13	BM-20 PRUNING FOR SAFETY AND EQUIPMENT CLEARANCE
14	TC-10 TRAFFIC CONTROL AND PROTECTION FOR SIDE ROADS, INTERSECTIONS, AND DRIVEWAYS
15	TC-22 ARTERIAL ROAD INFORMATION SIGN
16	PROPOSED GRADING - PROJECT LOCATION 1 - INFORMATION ONLY
17	PROPOSED GRADING - PROJECT LOCATION 2 - INFORMATION ONLY
18 - 21	PLAT OF HIGHWAYS

HIGHWAY STANDARDS

STD. NO.	DESCRIPTION
000001-08	STANDARD SYMBOLS, ABBREVIATIONS AND PATTERNS
280001-07	TEMPORARY EROSION CONTROL SYSTEMS
701001-02	OFF-ROAD OPERATIONS, 2L, 2W, MORE THAN 15' (4.5 m) AWAY
701006-05	OFF-RD OPERATIONS, 2L, 2W, 15 FT (4.5 m) TO 24" (600 mm) FROM PAVEMENT EDGE
701301-04	LANE CLOSURE, 2L, 2W, SHORT TIME OPERATIONS
701501-06	URBAN LANE CLOSURE, 2L, 2W, UNDIVIDED
701901-10	TRAFFIC CONTROL DEVICES

GENERAL NOTES

- BEFORE STARTING, THE CONTRACTOR SHALL CALL "J.U.L.I.E." AT 811 OR 1-800-892-0123 FOR FIELD LOCATIONS OF UTILITIES. (48 HOUR NOTIFICATION IS REQUIRED).
- THE CONTRACTOR SHALL COORDINATE CONSTRUCTION ACTIVITIES WITH UTILITY COMPANIES. THE CONTRACTOR SHALL BE RESPONSIBLE FOR THE PROTECTION OF ALL UNDERGROUND OR SURFACE UTILITIES EVEN THOUGH THEY MAY NOT BE SHOWN ON THE PLANS. ANY UTILITY THAT IS DAMAGED DURING CONSTRUCTION SHALL BE REPLACED TO THE SATISFACTION OF THE ENGINEER AT THE CONTRACTORS ON EXPENSE.
- THE CONTRACTOR SHALL CONTACT KALPANA KANNAN HOSADURGA, DISTRICT ONE TRAFFIC ONE CONTROL SUPERVISOR AT KALPANA.KANNAN-HOSADURGA@ILLINOIS.GOV A MINIMUM OF 72 HOURS IN ADVANCE OF BEGINNING OF WORK.
- THE CONTRACTOR WILL NOT BE ALLOWED TO SET UP A YARD OR FIELD OFFICE ON STATE PROPERTY WITHOUT WRITTEN PERMISSION FROM THE DEPARTMENT.
- ALL ELEVATIONS SHOWN ON THESE PLANS ARE BASED UPON BENCHMARKS PROVIDED BY IDOT. WHERE SECTION OR SUB SECTION MONUMENTS ARE ENCOUNTERED, THE ENGINEER SHALL BE NOTIFIED BEFORE SUCH MONUMENTS ARE REMOVED. THE CONTRACTOR SHALL PROTECT AND CAREFULLY PRESERVE ALL PROPERTY MARKERS AND MONUMENTS UNTIL THE OWNER,AN AUTHORIZED SURVEYOR OR AGENT HAS WITNESSED THEIR LOCATIONS.
- THE CONTRACTOR SHALL CONTACT THE ROADSIDE DEVELOPMENT UNIT IN THE BUREAU OF MAINTENANCE AT (847) 705-4171 AT LEAST 72 HOURS IN ADVANCE OF FORESTRY WORK.
- THE CONTRACTOR SHALL BE REQUIRED TO PROVIDE ACCESS TO ADJACENT PROPERTIES AT ALL TIMES DURING THE CONSTRUCTION OF THIS PROJECT.
- NO WORK SHALL COMMENCE UNTIL TRAFFIC CONTROL REQUIREMENTS ARE MET.
- POLLUTION CONTROL: THE CONTRACTOR SHALL BE REQUIRED TO COMPLY WITH STATE REGULATIONS REGARDING AIR, WATER AND NOISE POLLUTION.
- IT SHALL BE THE CONTRACTOR'S RESPONSIBILITY TO VERIFY ALL DIMENSIONS AND CONDITIONS EXISTING IN THE FIELD. DO NOT SCALE PLANS FOR CONSTRUCTION DIMENSIONS.
- THE CONSTRUCTION LIMITS WILL BE STAKED AND APPROVED BY THE ENGINEER PRIOR TO COMMENCING CONSTRUCTION. THE CONSTRUCTION LIMITS MAY BE ADJUSTED BY THE ENGINEER TO PRESERVE TREES AND NO ADDITIONAL COMPENSATION WILL BE PAID TO THE CONTRACTOR FOR CHANGES IN THE CONSTRUCTION LIMITS.
- DURING CONSTRUCTION OPERATIONS, IF ANY LOOSE MATERIAL IS DEPOSITED IN THE FLOW LINE OF DRAINAGE STRUCTURES SUCH THAT THE NATURAL FLOW OF WATER IS OBSTRUCTED, THE MATERIAL SHALL BE REMOVED AT THE CLOSE OF EACH WORKING DAY. AT THE CONCLUSION OF CONSTRUCTION OPERATIONS,ALL UTILITY STRUCTURES SHALL BE FREE FROM DUST AND DEBRIS. THE CONTRACTORS FAILURE TO PROVIDE THE ABOVE WILL PRECLUDE ANY POSSIBLE ADDED COMPENSATION REQUESTED DUE TO DELAYS OF UNSUITABLE MATERIALS CREATED AS A RESULT THEREOF.
- THE CONTRACTOR IS RESPONSIBLE FOR RETURNING ALL AREAS, AFFECTED BY EQUIPMENT OR LABORERS TO EXISTING CONDITIONS. THE CONTRACTOR IS ALSO RESPONSIBLE FOR PROTECTING ALL NEW WORK UNTIL COMPLETION OF THIS CONTRACT.
- THE CONTRACTOR SHALL OBSERVE AND COMPLY WITH ALL SECTIONS OF THE ILLINOIS CUSTOM SPRAY LAW, INCLUDING LICENSING. CONTRACTOR PERSONNEL APPLYING HERBICIDES SHALL HAVE A VALID PESTICIDE APPLICATOR LICENSE ISSUED BY THE ILLINOIS DEPARTMENT OF AGRICULTURE. THE LICENSED PESTICIDE APPLICATOR SHALL SUBMIT THEIR CURRENT LICENSE TO THE ENGINEER. THE LICENSED PESTICIDE APPLICATOR SHALL BE QUALIFIED AT A MINIMUM IN RIGHT- OF -WAY AND AQUATICS. LICENSED APPLICATOR SHALL WORK ON SITE.
- THE CONTRACTOR SHALL USE CARE IN TREE REMOVAL OPERATIONS NEAR ANY AND ALL EXISTING ITEMS THAT WILL NOT BE REMOVED. ANY DAMAGE DONE TO EXISTING ITEMS BY THE CONTRACTOR SHALL BE REPAIRED AT THE CONTRACTOR'S OWN EXPENSE TO THE SATISFACTION OF THE ENGINEER.
- ALL ELEVATIONS IN THE PLANS ARE BASED UPON THE NORTH AMERICAN VERTICAL DATUM OF 1988 (NAVD88), UNLESS OTHERWISE NOTED.
- ONE PARCEL (INA0009TE) IS NOT CLEARED. CONTRACTOR TO VERIFY WITH RESIDENT ENGINEER BEFORE REMOVING TREES IN THIS PARCEL.
- THE NORTHERN LONG EARED BAT (NLEB) HAS BEEN RECLASSIFIED AS AN ENDANGERED SPECIES UNDER THE ENDANGERED SPECIES BY THE U.S. FISH AND WILDLIFE SERVICE. TO AVOID AND MINIMIZE IMPACTS TO THE NLEB AND ITS HABITAT, DISTRICT ONE HAS IMPLEMENTED TIME RESTRICTIONS FOR ALL TREE REMOVAL AND FORESTRY WORK. THIS WORK SHALL NOT OCCUR FROM APRIL 1 TO OCTOBER 31 OF ANY GIVEN YEAR THROUGHOUT DISTRICT ONE.

DISTRICT ONE STANDARD DETAILS

STD. NO.	DESCRIPTION
BM-20	PRUNING FOR SAFETY AND EQUIPMENT CLEARANCE
TC-10	TRAFFIC CONTROL AND PROTECTION FOR SIDE ROADS, INTERSECTIONS, AND DRIVEWAYS
TC-22	ARTERIAL ROAD INFORMATION SIGN

COMMITMENTS

NONE

MODEL: Default
FILE NAME: P:\00010822\Design\Draw\Civil\CADD Sheets\TREE.D163703-sh-genote1.dgn



Rubinos & Mesia
Engineers, Inc.

200 S. Michigan Avenue, Suite 1500, Chicago, IL 60604-3482

USER NAME = Valvarez	DESIGNED - PH	REVISED -
	DRAWN - VEA	REVISED -
PLOT SCALE = 100,0000 ' / in.	CHECKED - MF	REVISED -
PLOT DATE = 7/3/2025	DATE - 8/30/2025	REVISED -

STATE OF ILLINOIS
DEPARTMENT OF TRANSPORTATION

INDEX OF SHEET /STANDARDS /GENERAL NOTES
SHERIDAN ROAD

SCALE: SHEET OF SHEETS STA. TO STA.

F.A.U RTE.	SECTION	COUNTY	TOTAL SHEETS	SHEET NO.
3506	2024-980-TR	LAKE	21	2
CONTRACT NO. 62X00				
		ILLINOIS	FED. AID PROJECT	

MODEL: Default
FILE NAME: P:\R010922\Design\Drawn\Civil\CADD_Sheets\TREE.D 62103-shr-500.dgn

CODE NO.	ITEM	UNIT	TOTAL QUANTITY	CONSTRUCTION CODE	
				0031	0031
				100% STATE	80% STATE ITEP 20% CITY OF HIGHLAND PARK
				URBAN	URBAN
20100110	TREE REMOVAL (6 TO 15 UNITS DIAMETER)	UNIT	341		341
20100210	TREE REMOVAL (OVER 15 UNITS DIAMETER)	UNIT	234		234
20101000	TEMPORARY FENCE	FOOT	50	50	
28000250	TEMPORARY EROSION CONTROL SEEDING	POUND	139	139	
28000400	PERIMETER EROSION BARRIER	FOOT	560	560	
28000510	INLET FILTERS	EACH	6	6	
67100100	MOBILIZATION	L SUM	1	1	
70102620	TRAFFIC CONTROL AND PROTECTION, STANDARD 701501	L SUM	1	1	
Z0010615	CLEANING EXISTING INLETS	EACH	6	6	
K1004595	PRUNING FOR SAFETY AND EQUIPMENT CLEARANCE	L SUM	1	1	
X2010350	TREE REMOVAL, ACRES (SPECIAL)	ACRE	1	1	
X2010516	SELECTIVE CLEARING	UNIT	61	57	4
X6700407	ENGINEER'S FIELD OFFICE, TYPE A (D1)	CAL MO	6	6	
X7200061	TEMPORARY INFORMATION SIGNING	SQ FT	51	51	

▼ SPECIALTY ITEMS



Rubinos &
Mesia
Engineers, Inc.

200 S. Michigan Avenue, Suite 1500, Chicago, IL 60604-2482

USER NAME = Valvarez	DESIGNED = PH	REVISED =
DRAWN = VEA	REVISED =	
PLOT SCALE = 100.0091' / in.	CHECKED = MF	REVISED =
PLOT DATE = 7/11/2025	DATE = 8/30/2025	REVISED =

STATE OF ILLINOIS
DEPARTMENT OF TRANSPORTATION

SUMMARY OF QUANTITIES
SHERIDAN ROAD

SCALE: SHEET 1 OF 5 SHEETS STA. TO STA.

F.A.U RTE.	SECTION	COUNTY	TOTAL SHEETS	SHEET NO.
3506	2024-980-TR	LAKE	21	3
CONTRACT NO. 62X00				
ILLINOIS FED. AID PROJECT				

PERIMETER EROSION BARRIER

	STATION	OFFSET	STATION	OFFSET	PERIMETER EROSION BARRIER (SEGMENT) FOOT
SOUTH CULVERT- LOCATION ONE					
A	106+79.62	75.8 LT	107+12.20	64.7 LT	31.04
B	107+12.20	64.7 LT	107+09.99	55.5 LT	9.48
C	107+09.99	55.5 LT	107+23.40	53.4 LT	12.43
D	107+23.40	53.4 LT	107+35.73	68.1 LT	13.97
E	107+35.73	68.1 LT	107+42.86	62.9 LT	6.53
F	107+42.86	62.9 LT	107+56.86	69.5 LT	14.22
G	106+70.50	77.0 RT	106+86.40	76.9 RT	17.82
H	106+86.40	76.9 RT	106+89.79	44.3 RT	32.79
I	106+89.79	44.3 RT	107+04.80	41.6 RT	16.35
J	107+04.80	41.6 RT	107+00.86	77.2 RT	35.83
K	107+00.86	77.2 RT	107+17.70	78.2 RT	18.92
				SUBTOTAL	209.36
NORTH CULVERT - LOCATION TWO					
L	124+87.10	79.7 LT	125+05.32	73.6 LT	19.22
M	125+05.32	73.6 LT	125+03.90	60.0 LT	13.64
N	125+03.90	60.0 LT	125+08.71	54.5 LT	7.35
O	125+08.71	54.5 LT	125+19.39	53.6 LT	10.72
P	125+28.52	62.6 LT	125+28.52	62.6 LT	12.81
Q	125+29.78	71.3 LT	125+29.78	71.3 LT	8.80
R	125+29.78	71.3 LT	125+42.81	85.2 LT	19.04
T	123+68.79	49.2 RT	124+56.00	52.0 RT	87.25
U	124+56.00	52.0 RT	124+89.85	70.8 RT	38.71
V	124+89.85	70.8 RT	124+90.83	61.7 RT	9.11
W	124+90.83	61.7 RT	124+96.76	61.0 RT	6.08
X	124+96.76	61.0 RT	125+00.22	53.2 RT	9.62
Y	125+00.22	53.2 RT	125+10.50	52.6 RT	10.35
Z	125+10.50	52.6 RT	125+16.43	63.8 RT	12.66
AA	125+16.43	63.8 RT	125+14.11	84.3 RT	20.66
BB	125+14.11	84.3 RT	125+24.50	90.0 RT	11.84
CC	125+24.50	90.0 RT	125+72.31	90.7 RT	52.49
				SUBTOTAL	350.34
TOTAL (NORTH+SOUTH)					560.00

SELECTIVE CLEARING

STATION	OFFSET	STATION	OFFSET	AREA SQFT	SELECTIVE CLEARING UNIT
SOUTH CULVERT- LOCATION ONE					
104+67.46	33.2 LT	106+15.5	32.5 LT	2535.89	2.54
106+30.05	33.2 LT	108+52.82	51 LT	10055.97	10.06
108+66.42	48.1 LT	109+40.00	36.4 LT	1841.75	1.84
104+92.00	19.2 RT	106+28.10	19.6 RT	492.62	0.49
104+84.84	27.2 RT	106+27.97	33 RT	1088.00	1.09
106+27.97	33 RT	109+03.27	40.2 RT	724.63	0.72
107+80.33	19.7 RT	109+04.63	33.1 RT	1423.56	1.42
109+17.62	30.4 RT	109+38.68	25.4 RT	267.30	0.27
109+15.57	38.9 RT	109+41.99	37.4 RT	120.72	0.12
SUBTOTAL					18.55
NORTH CULVERT - LOCATION TWO					
122+40.00	16.9 LT	122+81.09	34.6 LT	247.67	0.25
123+10.89	34 LT	127+94.59	33.6 LT	18319.17	18.32
122+22.96	25.6 RT	125+72.19	90.7 RT	16221.53	16.22
125+93.48	92.3 RT	126+99.98	35.1 RT	3160.39	3.16
SUBTOTAL					37.95
TOTAL					57.00

TEMPORARY FENCE

	STATION	OFFSET	STATION	OFFSET	TEMPORARY FENCE FOOT
NORTH CULVERT- LOCATION TWO					
S	125+76.97	74.4 LT	126+31.77	74.4 LT	50
				TOTAL	50

MODEL: Default
FILE NAME: P:\00010822\Design\Draw\Civil\CADD_Sheets\TREE D1 62X00-sh-schedule.dgn



Rubinos & Mesia
Engineers, Inc.
200 S. Michigan Avenue, Suite 1500, Chicago, IL 60604-6482

USER NAME	= Valvarez
PLOT SCALE	= 100,0091 ' / in.
PLOT DATE	= 7/3/2025

DESIGNED	-	PH
DRAWN	-	VEA
CHECKED	-	MF
DATE	-	8/30/2025

REVISED	-
REVISED	-
REVISED	-
REVISED	-

STATE OF ILLINOIS
DEPARTMENT OF TRANSPORTATION

SCHEDULE OF QUANTITIES
SHERIDAN ROAD

SCALE:	SHEET	OF	SHEETS	STA.	TO STA.
--------	-------	----	--------	------	---------

F.A.U RTE.	SECTION	COUNTY	TOTAL SHEETS	SHEET NO.
3506	2024-980-TR	LAKE	21	4
CONTRACT NO. 62X00				
ILLINOIS FED. AID PROJECT				

TREE REMOVAL (6 TO 15 UNITS DIAMETER)

STA	OFFSET	DIAMETER
114+92.88	19.4 RT	10.0
115+90.86	20.0 RT	10.0
116+25.03	23.8 RT	7.0
116+41.43	22.2 RT	6.0
116+43.89	25.3 RT	6.0
116+44.88	22.1 RT	6.0
117+43.22	20.7 RT	6.0
118+02.98	26.6 RT	15.0
118+93.74	23.0 RT	9.0
121+01.52	20.8 RT	8.0
121+07.98	19.7 RT	6.0
121+23.88	24.2 RT	6.0
121+34.92	17.7 RT	7.0
121+44.85	24.7 RT	9.0
121+70.61	20.3 RT	7.0
121+72.84	23.8 RT	6.0
121+98.14	19.7 RT	6.0
122+20.71	28.2 RT	12.0
127+06.12	16.9 RT	13.0
127+22.41	15.9 RT	7.0
127+46.90	32.1 RT	6.0
127+64.45	27.6 RT	13.0
127+97.32	29.9 RT	12.0
129+74.29	20.2 RT	15.0
129+92.56	25.4 RT	8.0
129+92.68	22.0 RT	6.0
129+95.32	22.2 RT	10.0
129+96.79	24.0 RT	12.0
131+00.20	22.1 RT	10.0
131+00.59	25.7 RT	14.0
131+78.01	26.4 RT	14.0
140+91.36	24.0 RT	10.0
140+95.91	24.0 RT	13.0
142+42.41	22.4 RT	6.0
142+47.09	22.4 RT	15.0
142+92.74	22.4 RT	6.0
142+98.23	23.3 RT	9.0
TOTAL		341

TREE REMOVAL (OVER 15 UNITS DIAMETER)

STA	OFFSET	DIAMETER
115+91.86	25.7 RT	18.0
115+93.77	20.1 RT	17.0
118+15.39	26.0 RT	24.0
119+02.12	30.2 RT	20.0
121+10.64	27.3 RT	17.0
121+48.91	25.6 RT	16.0
121+87.57	19.8 RT	16.0
128+12.53	27.8 RT	17.0
128+67.00	29.0 RT	20.0
139+36.38	22.5 RT	28.0
140+16.34	26.4 RT	20.0
141+46.28	25.9 RT	21.0
TOTAL		234

SELECTIVE CLEARING

STA	STA	SQ. FT.	UNIT
140+22.50	143+42.26	3,483.4	3.48
ROUNDED TOTAL			3.50



[Signature]
DATE: 6/25/25

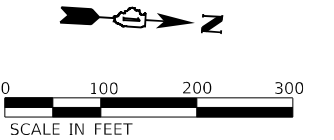
SEAL EXPIRES: 11/30/2025

Model: Default
File Name: P:\R00_0922\Design\Draw\Civil\CADD Sheets\TREE.D16200-1R-SW-ccchedule.dgn

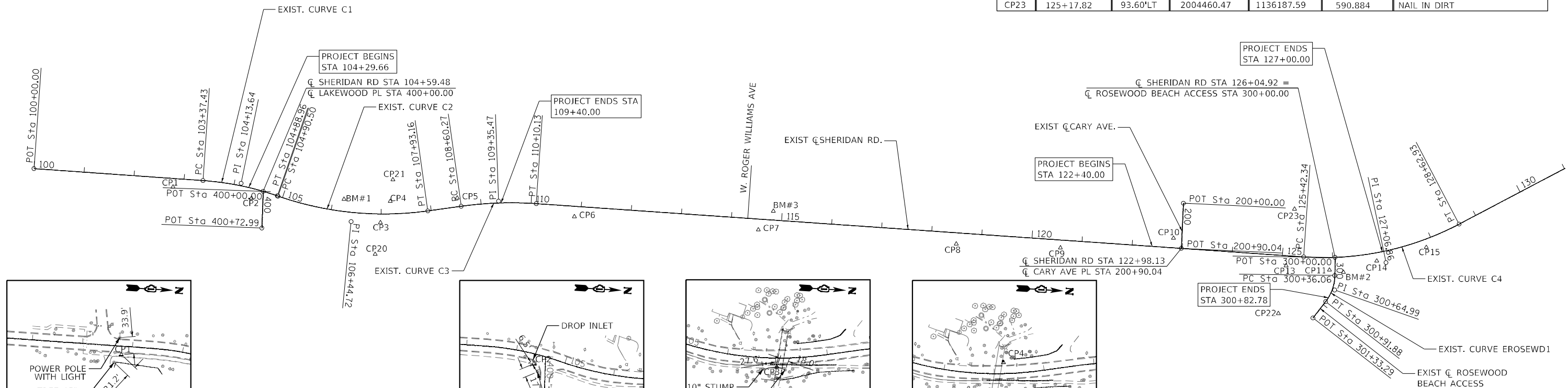
USER NAME : Roadway	DESIGNED - VZ	REVISED -
	DRAWN - VZ	REVISED -
PLOT SCALE :	CHECKED - EPS	REVISED -
PLOT DATE : 7/25/2025	DATE - 7/31/2025	REVISED -

F.A.U. RTE.	SECTION	COUNTY	TOTAL SHEETS	SHEET NO.
3506	2024-980-TR	LAKE	21	5
CONTRACT NO. 62X00				
ILLINOIS FED. AID PROJECT				

EXIST. CURVE EROSEWD1
PI STA. = 300+64.99
 $\Delta = 37^{\circ} 01' 02''$ (RT)
D = $66^{\circ} 19' 01''$
R = 86.40'
T = 28.92'
L = 55.82'
E = 4.71'
e = NC
T.R. = N.A.
S.E. RUN = N.A.
P.C. STA. = 300+36.06
P.T. STA. = 300+91.88
DESIGN SPEED = 20 MPH



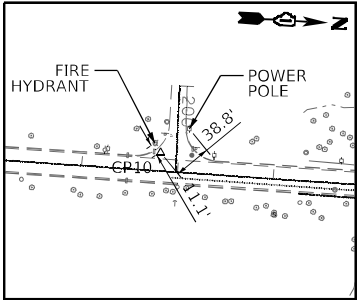
CP No.	STATION	OFFSET	NORTHING	EASTING	ELEVATION	MARKER
CP1	102+78.71	16.81'RT	2002227.71	1136277.51	656.226	CROSS ON THE SIDEWALK
CP2	104+44.37	20.35'RT	2002388.83	1136292.33	648.80	CROSS ON THE SIDEWALK
CP3	106+98.71	17.35'RT	2002644.51	1136323.73	636.598	CROSS ON THE SIDEWALK
CP4	107+18.46	24.93'LT	2002661.31	1136280.25	636.513	
CP5	108+54.76	17.31'LT	2002794.25	1136265.58	639.149	MAG NAIL ON ENTRANCE
CP6	110+87.75	20.67'RT	2003029.41	1136288.72	649.766	MAG NAIL ON SIDEWALK
CP7	114+55.10	21.20'RT	2003396.74	1136292.62	647.649	CROSS ON FLOW LINE OF CURB
CP8	118+50.25	22.15'RT	2003791.86	1136297.21	646.06	IRON ROD WITH CAP
CP9	120+57.77	15.45'RT	2003999.44	1136292.41	636.286	MAG NAIL ON ENTRANCE
CP10	122+81.05	19.26'LT	2004223.03	1136259.75	623.528	MAG NAIL ON RETURN CARY AVE.
CP11	125+93.34	24.86'RT	2004537.05	1136304.41	616.792	CROSS ON TOP OF CURB
CP13	125+08.56	19.99'RT	2004450.17	1136301.09	615.827	IRON ROD WITH CAP
CP14	126+85.71	16.10'RT	2004630.00	1136280.70	621.944	CROSS ON CONCRETE ENTRANCE
CP15	125+85.35	15.72'RT	2004726.80	1136247.75	627.875	MAG NAIL ON ENTRANCE
CP20	106+89.92	80.45'RT	2002637.82	1136387.18	610.290	CROSS ON CONCRETE SLAB
CP21	107+25.41	68.01'LT	2002663.99	1136236.77	611.562	CROSS ON CONCRETE SLAB
CP22	124+99.89	115.77'RT	2004440.62	1136396.78	587.309	CROSS ON CONCRETE SLAB
CP23	125+17.82	93.60'LT	2004460.47	1136187.59	590.884	NAIL IN DIRT



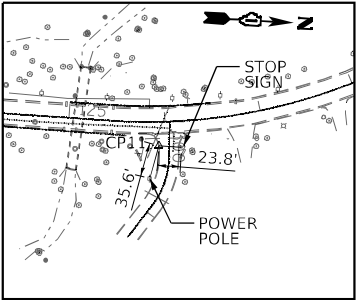
CONTROL PT No. 4

CONTROL PT No. 9

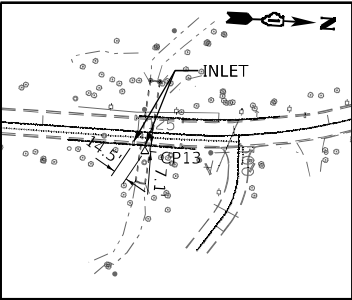
1. CONTRACTOR WILL RE-ESTABLISH MONUMENT/CONTROL POINT AND FURNISH TIE SKETCHES TO DISTRICT 1 PLATS AND PLANS.
2. ALL DIMENSIONS GIVEN IN FEET AND DECIMAL PARTS THEREOF.
3. ALL COORDINATE VALUES ARE IN THE U.S. SURVEY FOOT UNITS.
4. NO DIMENSIONS SHALL BE DERIVED FROM SCALE MEASUREMENT.
5. FOR ADDITIONAL INFO SEE SHEET 7



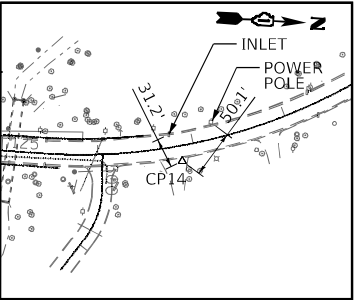
CONTROL PT No. 10



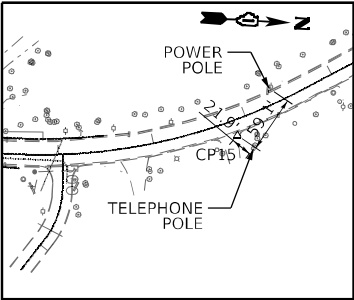
CONTROL PT No. 11



CONTROL PT No. 13



CONTROL PT No. 14



CONTROL PT No. 15

BM#1

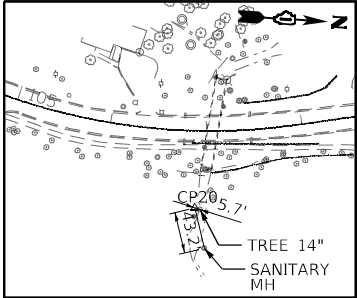
X IN N. BOLT OF FIRE HYDRANT W. SIDE SHERIDAN RD \pm 150' N. LAKEWOOD
ELEVATION 642.196

BM#2

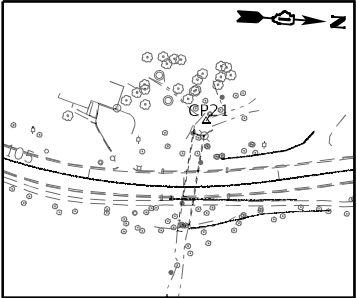
☐ IN NE. CORNER CONCRETE BASE OF ROSEWOOD SIGN AT ENTRANCE
TO ROSEWOOD BEACH AND SHERIDAN RD.
ELEVATION 616.200

BM#3

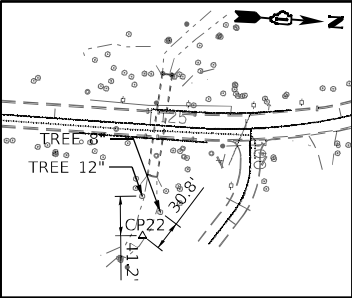
X IN W. BOLT OF FIRE HYDRANT W. ROGER WILLIAMS AVE. AND SHERIDAN RD.
ELEVATION 649.607



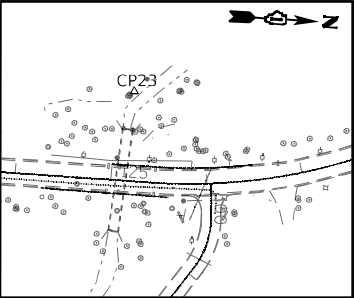
CONTROL PT No. 20



CONTROL PT No. 21



CONTROL PT No. 22



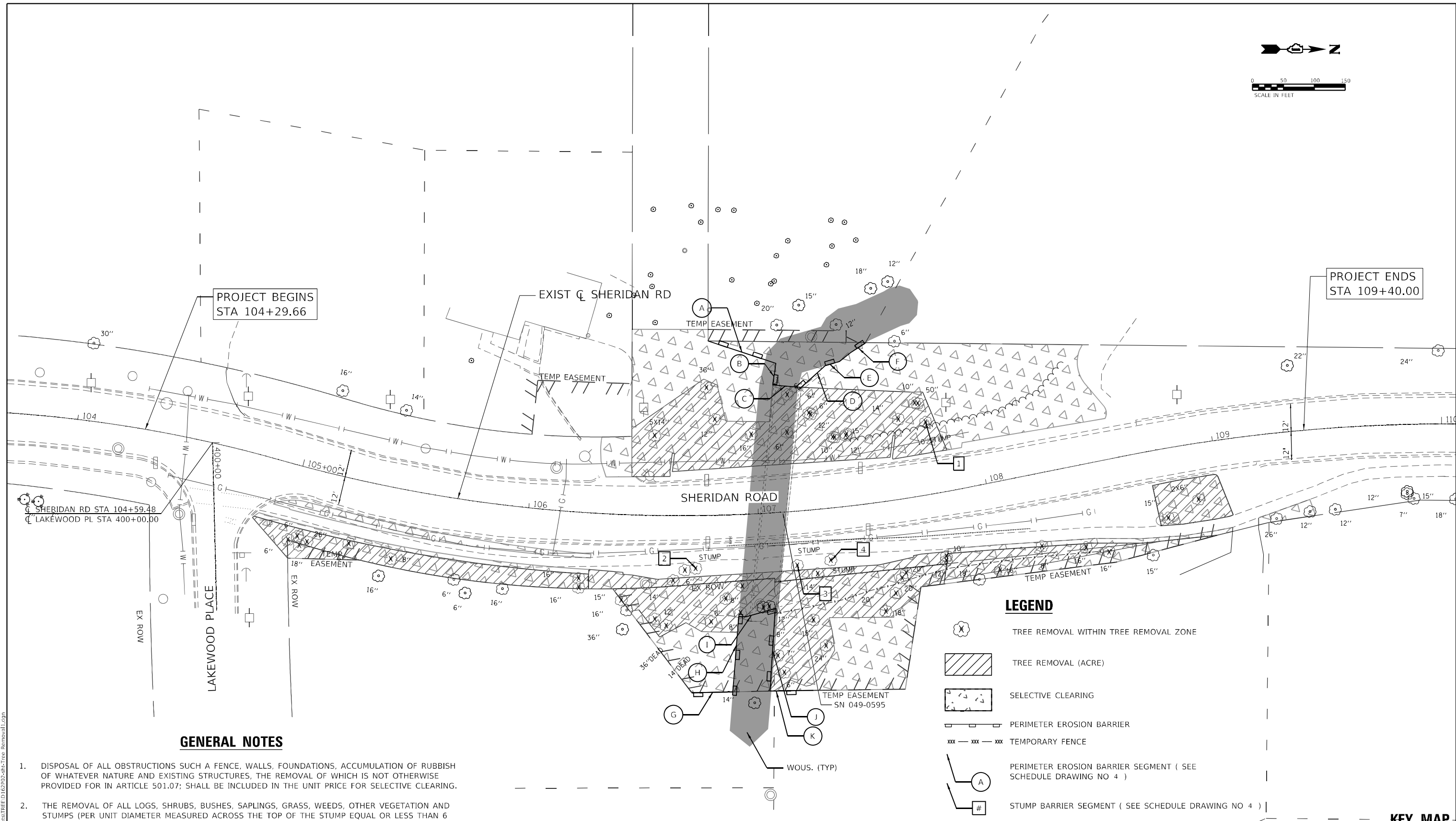
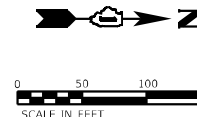
CONTROL PT No. 23

ALIGNMENT SHOWN ON
SHEET NO. 6

USER NAME = Valvarez	DESIGNED - PH	REVISED -
	DRAWN - VEA	REVISED -
PLOT SCALE = 200,0182' / In.	CHECKED - MF	REVISED -
PLOT DATE = 7/3/2025	DATE - 8/30/2025	REVISED -

ALIGNMENT, TIES, AND BENCHMARK SHERIDAN ROAD			
SCALE: 1:100	SHEET 2 OF 2 SHEETS	STA.	TO STA.

F.A.U. RTE.	SECTION	COUNTY	TOTAL SHEETS	SHEET NO.
3506	2024-980-TR	LAKE	21	7
CONTRACT NO. 62X00				
ILLINOIS FED. AID PROJECT				



GENERAL NOTES

- DISPOSAL OF ALL OBSTRUCTIONS SUCH A FENCE, WALLS, FOUNDATIONS, ACCUMULATION OF RUBBISH OF WHATEVER NATURE AND EXISTING STRUCTURES, THE REMOVAL OF WHICH IS NOT OTHERWISE PROVIDED FOR IN ARTICLE 501.07; SHALL BE INCLUDED IN THE UNIT PRICE FOR SELECTIVE CLEARING.
- THE REMOVAL OF ALL LOGS, SHRUBS, BUSHES, SAPLINGS, GRASS, WEEDS, OTHER VEGETATION AND STUMPS (PER UNIT DIAMETER MEASURED ACROSS THE TOP OF THE STUMP EQUAL OR LESS THAN 6 INCHES, (WHERE ONE UNIT IS EQUAL TO 1 INCH)) SHALL BE INCLUDED IN THE UNIT PRICE FOR SELECTIVE CLEARING. STUMPS GREATER THAN 6 INCHES IN UNIT DIAMETER SHALL BE PAID PER UNIT FOR STUMP REMOVAL.
- EXACT LOCATION OF THE SELECTIVE CLEARING SHALL BE DETERMINED AND APPROVED BY THE ENGINEER.
- THE CONTRACTOR MUST WATCH AND PROTECT ALL THE AERIAL UTILITIES THROUGHOUT THE ENTIRE TIME OF TREE REMOVAL

LEGEND

- TREE REMOVAL WITHIN TREE REMOVAL ZONE
- TREE REMOVAL (ACRE)
- SELECTIVE CLEARING
- PERIMETER EROSION BARRIER
- TEMPORARY FENCE
- PERIMETER EROSION BARRIER SEGMENT (SEE SCHEDULE DRAWING NO 4)
- STUMP BARRIER SEGMENT (SEE SCHEDULE DRAWING NO 4)

KEY MAP



MODEL: Default
FILE NAME: P:\00010822\Design\Draw\Chili\CAOD - Sheets\TREE.D162\02-shc-Tree Removal1.dgn

RME

Rubinos & Mesia
Engineers, Inc.
200 S. Michigan Avenue, Suite 1500, Chicago, IL 60604-6482

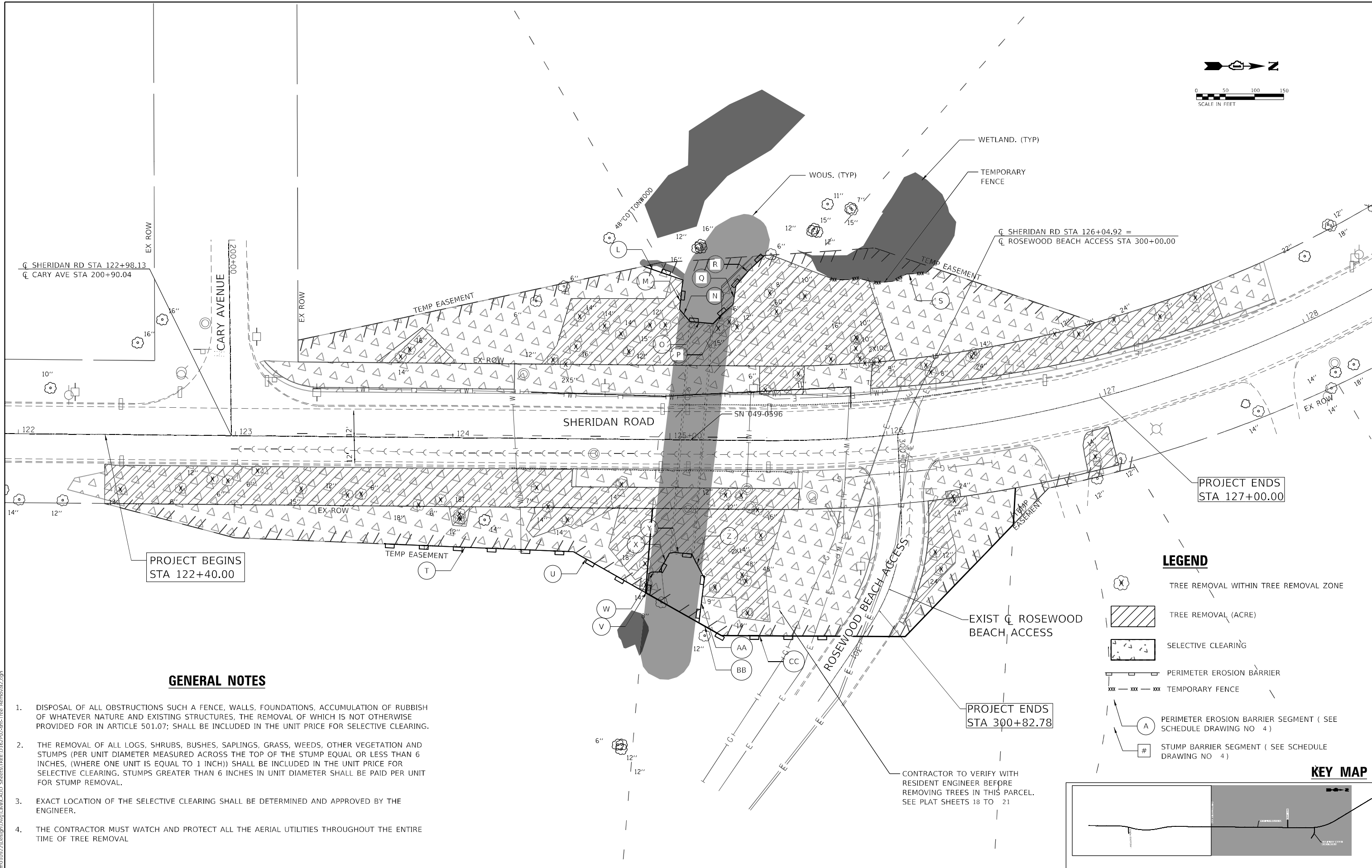
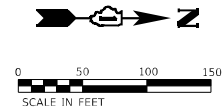
USER NAME = Valvarez	DESIGNED - PH	REVISED -
	DRAWN - VEA	REVISED -
PLOT SCALE = 40,0036' / in.	CHECKED - MF	REVISED -
PLOT DATE = 7/3/2025	DATE - 8/30/2025	REVISED -

STATE OF ILLINOIS
DEPARTMENT OF TRANSPORTATION

TREE REMOVAL PLAN – PROJECT LOCATION 1
SHERIDAN ROAD

SCALE: 1:20 SHEET 1 OF 2 SHEETS STA. 104+29.66 TO STA. 109+40.00

F.A.U RTE.	SECTION	COUNTY	TOTAL SHEETS	SHEET NO.
3506	2024-980-TR	LAKE	21	8
CONTRACT NO. 62X00				
ILLINOIS FED. AID PROJECT				



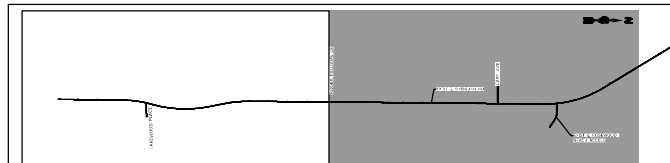
GENERAL NOTES

- DISPOSAL OF ALL OBSTRUCTIONS SUCH A FENCE, WALLS, FOUNDATIONS, ACCUMULATION OF RUBBISH OF WHATEVER NATURE AND EXISTING STRUCTURES, THE REMOVAL OF WHICH IS NOT OTHERWISE PROVIDED FOR IN ARTICLE 501.07; SHALL BE INCLUDED IN THE UNIT PRICE FOR SELECTIVE CLEARING.
- THE REMOVAL OF ALL LOGS, SHRUBS, BUSHES, SAPLINGS, GRASS, WEEDS, OTHER VEGETATION AND STUMPS (PER UNIT DIAMETER MEASURED ACROSS THE TOP OF THE STUMP EQUAL OR LESS THAN 6 INCHES, (WHERE ONE UNIT IS EQUAL TO 1 INCH)) SHALL BE INCLUDED IN THE UNIT PRICE FOR SELECTIVE CLEARING. STUMPS GREATER THAN 6 INCHES IN UNIT DIAMETER SHALL BE PAID PER UNIT FOR STUMP REMOVAL.
- EXACT LOCATION OF THE SELECTIVE CLEARING SHALL BE DETERMINED AND APPROVED BY THE ENGINEER.
- THE CONTRACTOR MUST WATCH AND PROTECT ALL THE AERIAL UTILITIES THROUGHOUT THE ENTIRE TIME OF TREE REMOVAL

LEGEND

- TREE REMOVAL WITHIN TREE REMOVAL ZONE
- TREE REMOVAL (ACRE)
- SELECTIVE CLEARING
- PERIMETER EROSION BARRIER
- TEMPORARY FENCE
- PERIMETER EROSION BARRIER SEGMENT (SEE SCHEDULE DRAWING NO 4)
- STUMP BARRIER SEGMENT (SEE SCHEDULE DRAWING NO 4)

KEY MAP



MODEL: Default
FILE NAME: P:\00010822\Design\Draw\ChallCADD Sheets\TREE.D163703-sh-T-Tree Removal12.dgn



Rubinos &
Mesia
Engineers, Inc.

200 S. Michigan Avenue, Suite 1500, Chicago, IL 60604-4482

USER NAME	= Valvarez
DESIGNED	- PH
DRAWN	- VEA
CHECKED	- MF
DATE	- 8/30/2025
PLOT SCALE	= 40,0036' / in.
PLOT DATE	= 7/3/2025

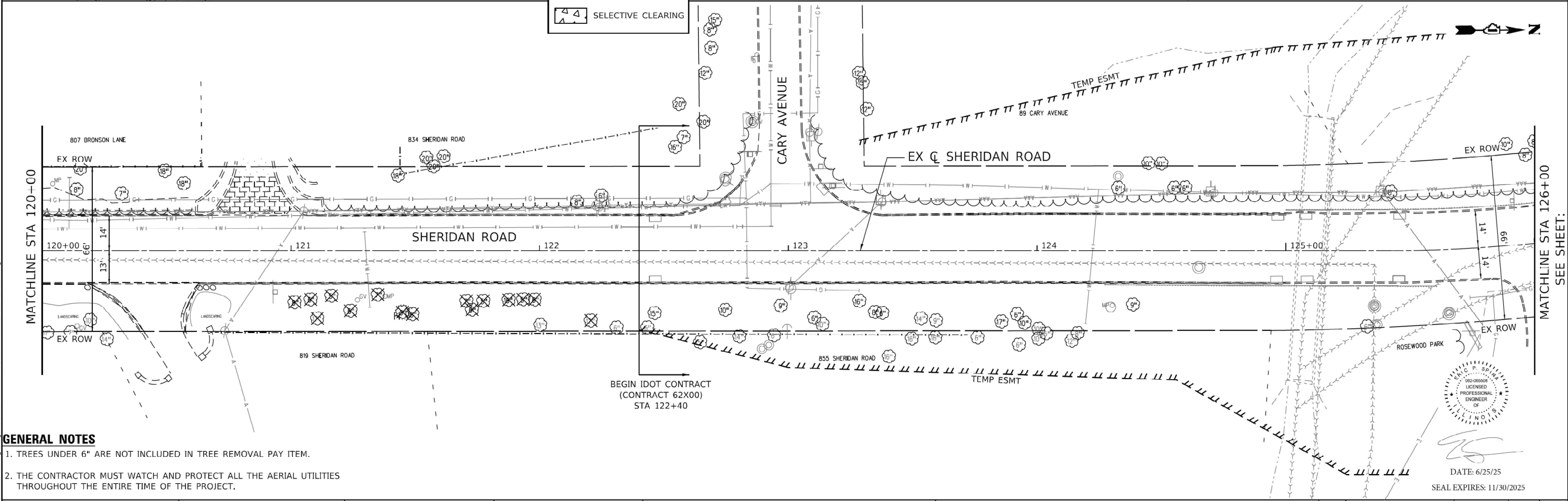
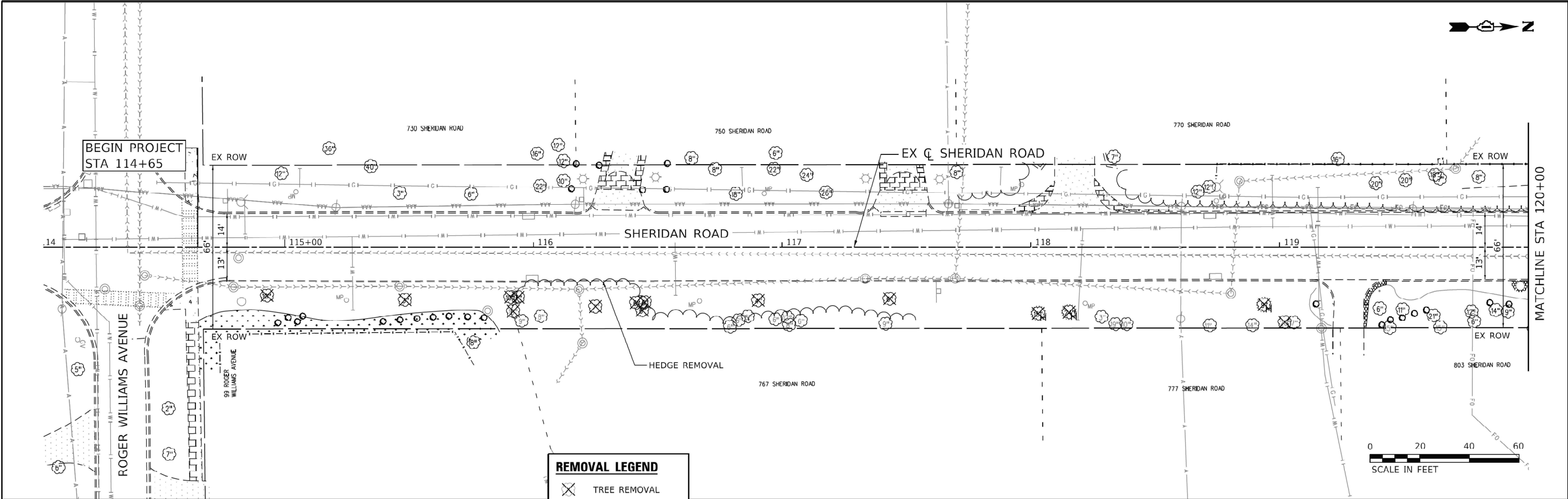
REVISED	-
REVISED	-
REVISED	-
REVISED	-

STATE OF ILLINOIS
DEPARTMENT OF TRANSPORTATION

TREE REMOVAL PLAN - PROJECT LOCATION 2
SHERIDAN ROAD

SCALE: 1:20 SHEET 1 OF 2 SHEETS STA. 122+40.00 TO STA. 127+00.00

F.A.U RTE.	SECTION	COUNTY	TOTAL SHEETS	SHEET NO.
3506	2024-980-TR	LAKE	21	9
CONTRACT NO. 62X00				
ILLINOIS FED. AID PROJECT				



GENERAL NOTES

1. TREES UNDER 6" ARE NOT INCLUDED IN TREE REMOVAL PAY ITEM.
2. THE CONTRACTOR MUST WATCH AND PROTECT ALL THE AERIAL UTILITIES THROUGHOUT THE ENTIRE TIME OF THE PROJECT.

CiorbaGroup
8725 W. Higgins Rd, Ste 600, Chicago, IL 60631
P 773.775.4009 | www.ciorba.com

USER NAME = Roadway	DESIGNED - EC	REVISED -
	DRAWN - EC	REVISED -
PLOT SCALE =	CHECKED - EPS	REVISED -
PLOT DATE = 6/25/2025	DATE - 11/1/2024	REVISED -

CITY OF HIGHLAND PARK

**SHERIDAN ROAD SIDEWALK TREE REMOVAL
TREE REMOVAL PLAN**

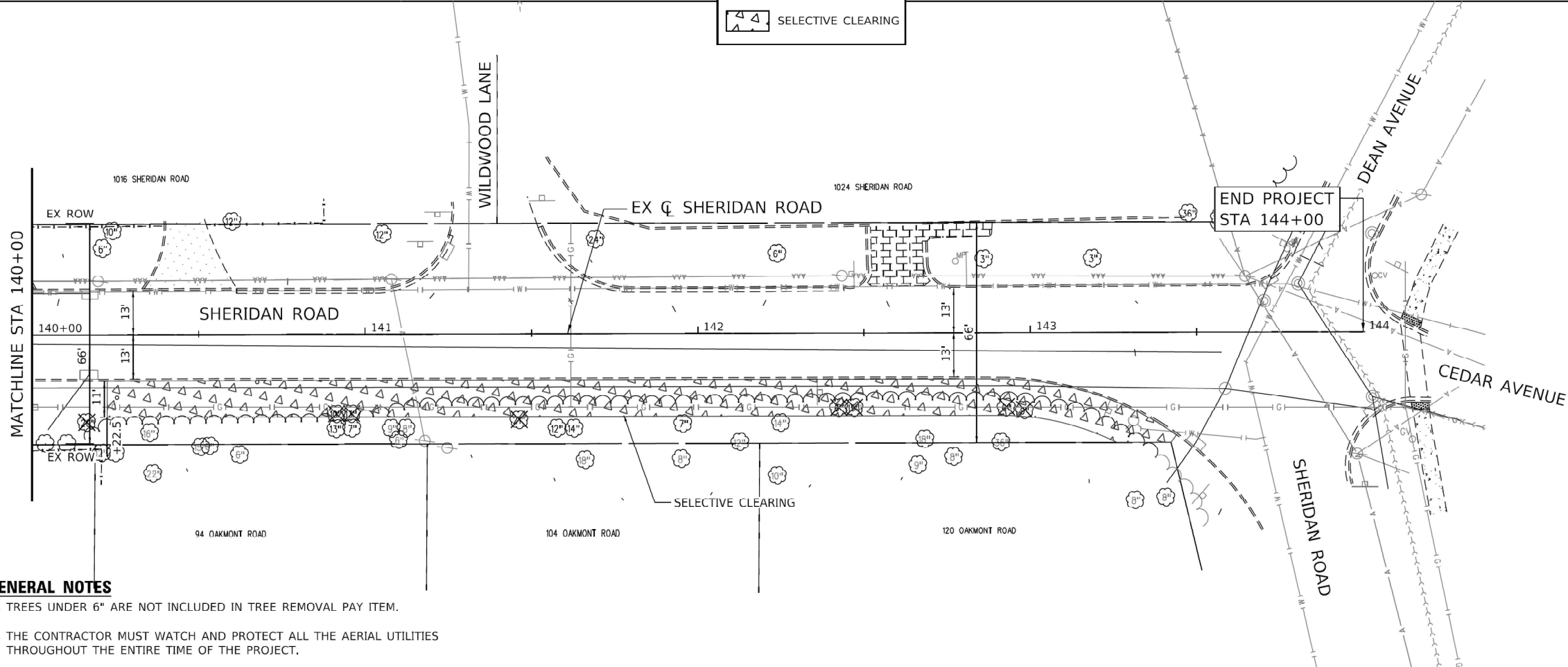
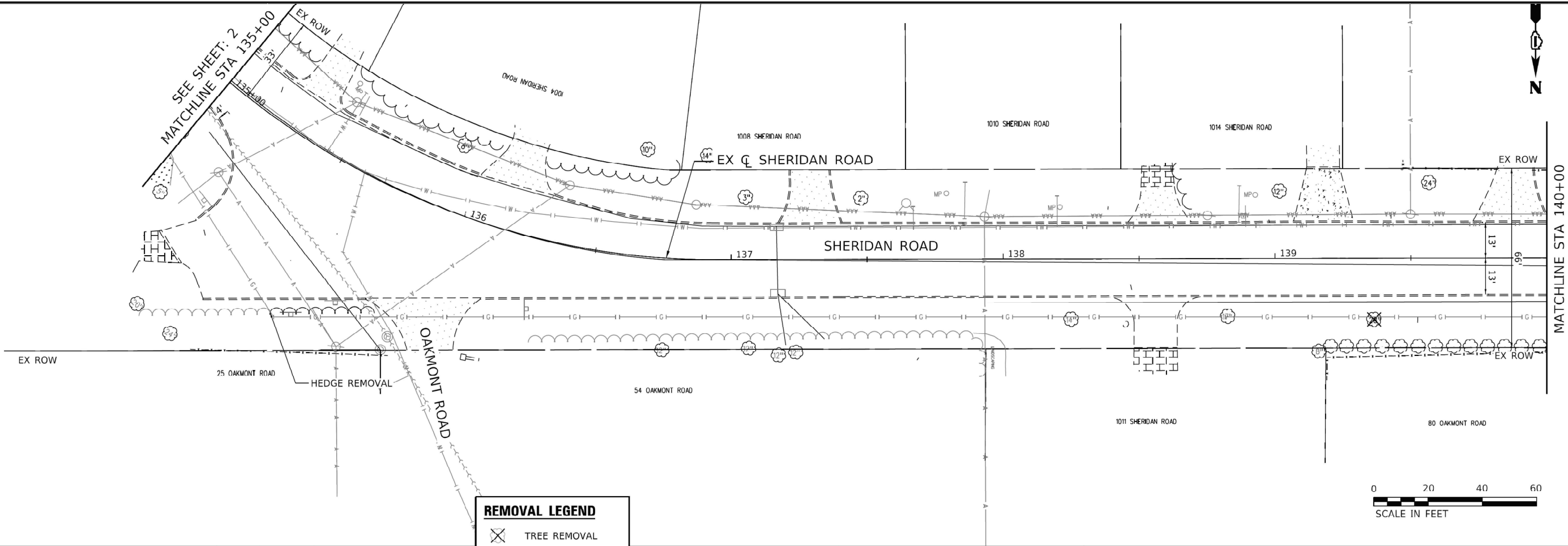
SCALE: N.T.S. SHEET NO. OF 3 SHEETS STA. 114+65 TO STA. 126+00

F.A.U. RTE.	SECTION	COUNTY	TOTAL SHEETS	SHEET NO.
3506	2024-980-TR	LAKE	21	10
CONTRACT NO. 62X00				



DATE: 6/25/25
SEAL EXPIRES: 11/30/2025

MODEL: Default
FILE NAME: P:\62X00_0922\Design\Drawings\Civil\CADD Sheets\TREE\62X00-TR-SW-Tee Removal.dgn



GENERAL NOTES

1. TREES UNDER 6" ARE NOT INCLUDED IN TREE REMOVAL PAY ITEM.
2. THE CONTRACTOR MUST WATCH AND PROTECT ALL THE AERIAL UTILITIES THROUGHOUT THE ENTIRE TIME OF THE PROJECT.



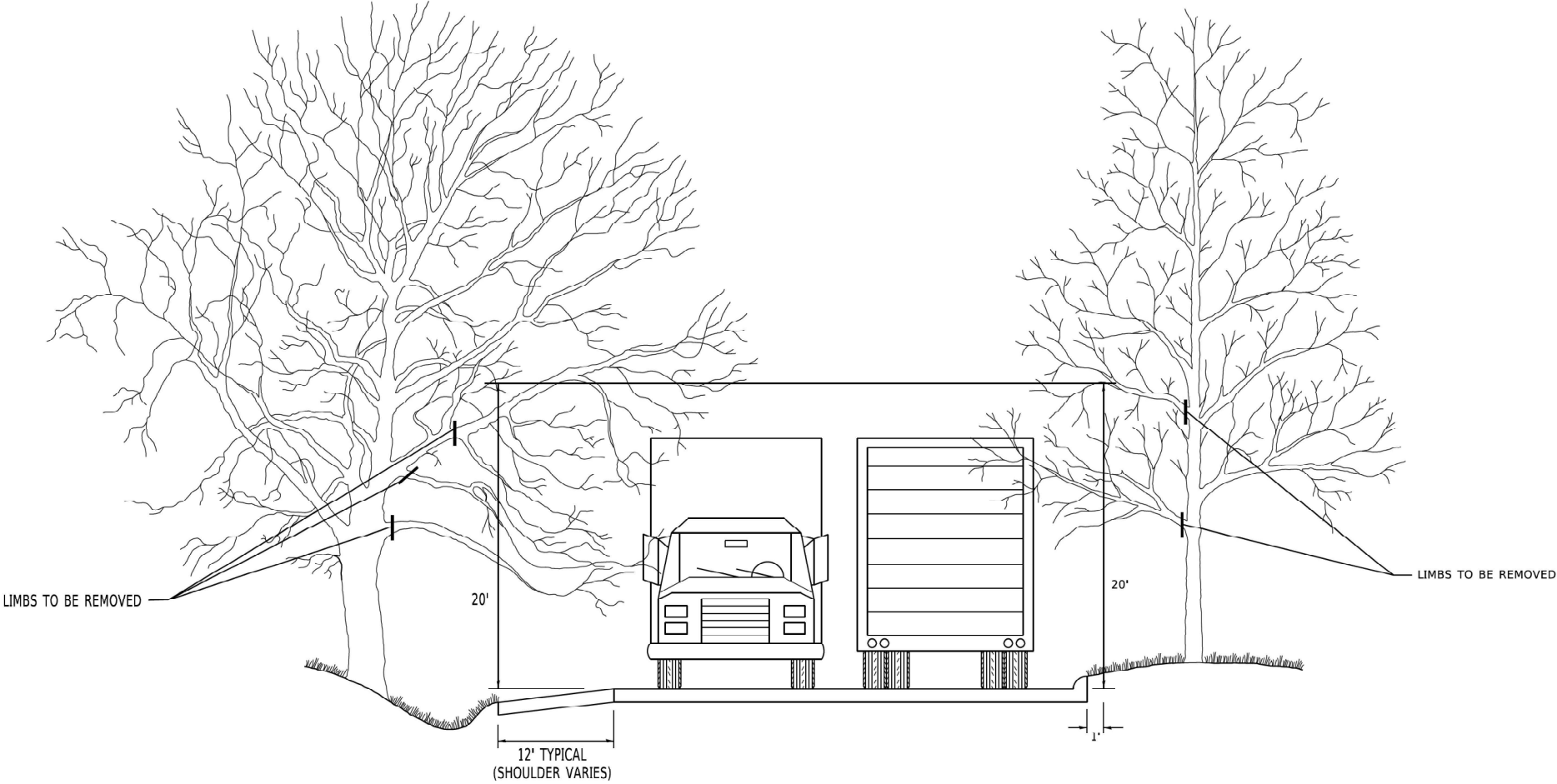
USER NAME = Roadway	DESIGNED - VZ	REVISED -
	DRAWN - VZ	REVISED -
PLOT SCALE =	CHECKED - EPS	REVISED -
PLOT DATE = 7/25/2025	DATE - 7/31/2025	REVISED -

CITY OF HIGHLAND PARK

**SHERIDAN ROAD SIDEWALK
TREE REMOVAL PLAN**

SCALE: N.T.S. SHEET NO. OF 3 SHEETS STA. 135+00 TO STA. 144+00

F.A.U. RTE. 3506	SECTION 2024-980-TR	COUNTY LAKE	TOTAL SHEETS 21	SHEET NO. 12
CONTRACT NO. 62X00				
ILLINOIS FED. AID PROJECT				



NO:0561_0561.dwg
FILE:bm20_2024-980-TR.dwg
PLOT:0561_0561.dwg
PLOT DATE:3/11/2019
PLOT SCALE:1/8" = 1'-0"
PLOT DATE:3/11/2019
PLOT SCALE:1/8" = 1'-0"

USER NAME	= footemj	DESIGNED	-	REVISED	-	R. BORO 10-31-06
DRAWN	-	CHECKED	-	REVIS	-	
PLOT SCALE	= 50.0000 ' / in.	DATE	-	REVISED	-	
PLOT DATE	= 3/11/2019					

STATE OF ILLINOIS
DEPARTMENT OF TRANSPORTATION

PRUNING FOR SAFETY AND EQUIPMENT CLEARANCE			
SCALE: NONE	SHEET 1	OF 1	SHEETS
STA.	TO STA.		

F.A.U RTE.	SECTION	COUNTY	TOTAL SHEETS	SHEET NO.
3506	2024-980-TR	LAKE	21	13
BM-20		CONTRACT NO. 62X00		
		ILLINOIS FED. AID PROJECT		

Model: Default
File Name: 2024-980-TR-62X00-02.dgn
Project: 2024-980-TR-62X00-02.dgn
Sheet: 15 of 15
Date: 3/4/2019
User: JUCIUS

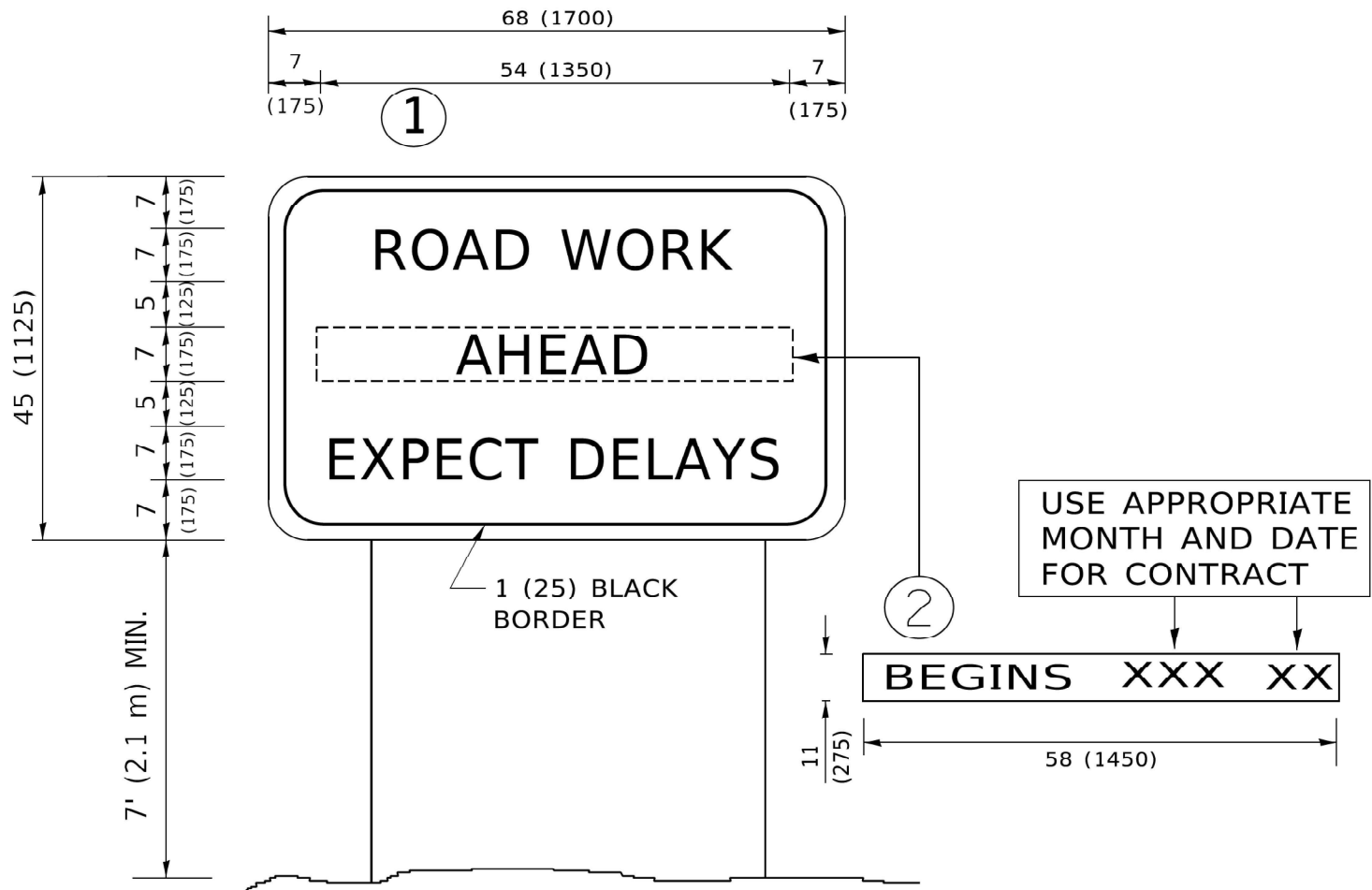
	USER NAME = footemj	DESIGNED -	REVISED - R. MIRS 09-15-97
		DRAWN -	REVISED - R. MIRS 12-11-97
	PLOT SCALE = 50.0000 ' / in.	CHECKED -	REVISED - T. RAMMACHER 02-02-99
	PLOT DATE = 3/4/2019	DATE -	REVISED - C. JUCIUS 01-31-07

STATE OF ILLINOIS
DEPARTMENT OF TRANSPORTATION

ARTERIAL ROAD
INFORMATION SIGN

SCALE: NONE SHEET 1 OF 1 SHEETS STA. TO STA.

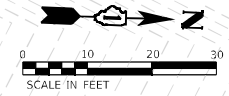
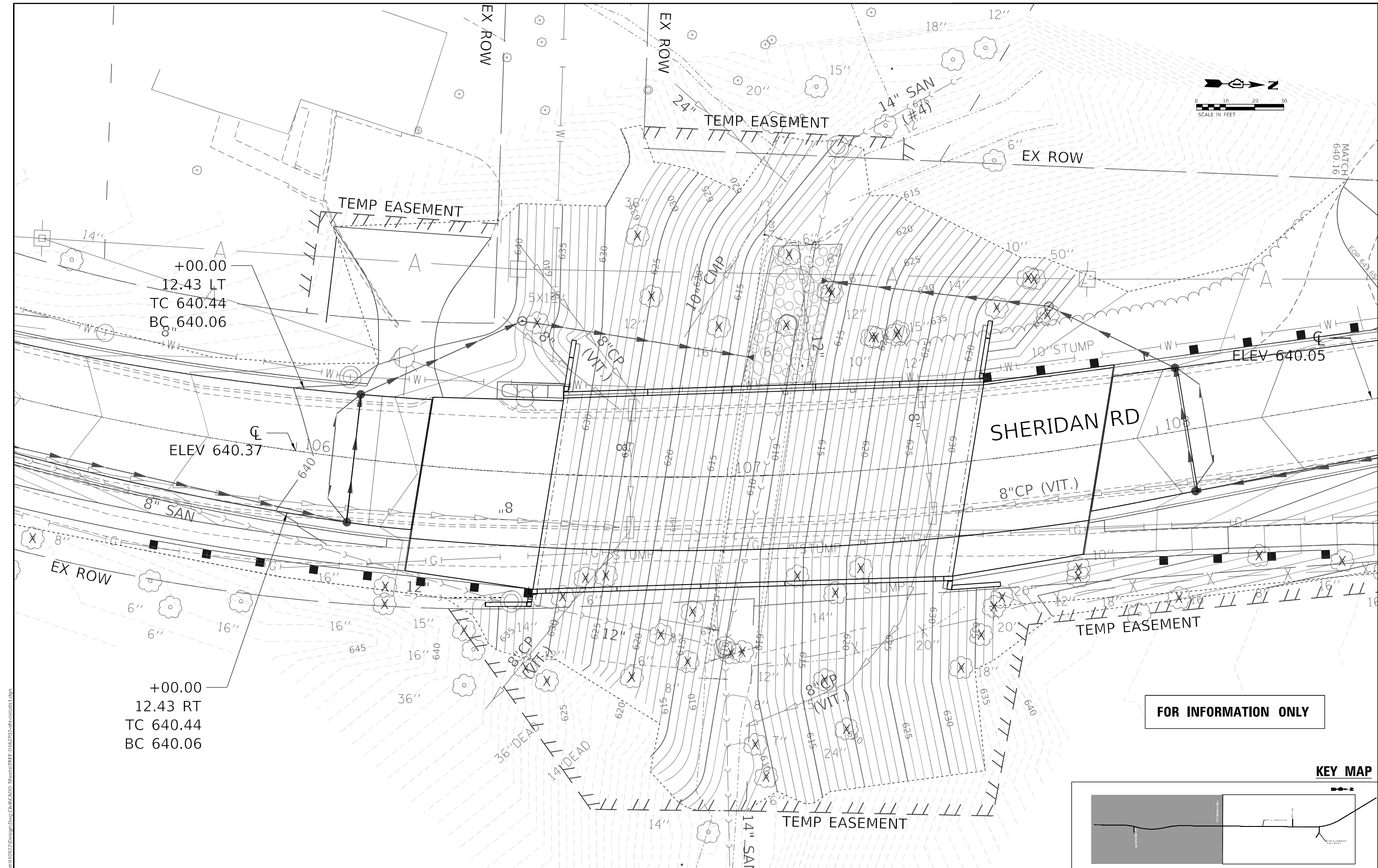
F.A.U. RTE.	SECTION	COUNTY	TOTAL SHEETS	SHEET NO.
3506	2024-980-TR	LAKE	21	15
TC-22		CONTRACT NO. 62X00		
ILLINOIS FED. AID PROJECT				



NOTES:

1. USE BLACK LETTERING ON ORANGE BACKGROUND.
2. ERECT SIGNS IN ADVANCE OF THE LOCATION FOR THE "ROAD CONSTRUCTION AHEAD" SIGN AT LOCATIONS AS DIRECTED BY THE ENGINEER.
3. ERECT SIGN ① WITH INSTALLED PANEL ② ONE WEEK PRIOR TO THE START OF CONSTRUCTION.
4. REMOVE PANEL ② SOON AFTER THE START OF CONSTRUCTION.
5. SEE SPECIAL PROVISION FOR "TEMPORARY INFORMATION SIGNING" FOR ADDITIONAL INFORMATION.
6. ONE SIGN ASSEMBLY EQUALS 25.70 SQ. FT. (2.3 SQ. M.)
7. SHALL BE PAID FOR AS TEMPORARY INFORMATION SIGNING.

ALL DIMENSIONS ARE IN INCHES (MILLIMETERS)
UNLESS OTHERWISE SHOWN.



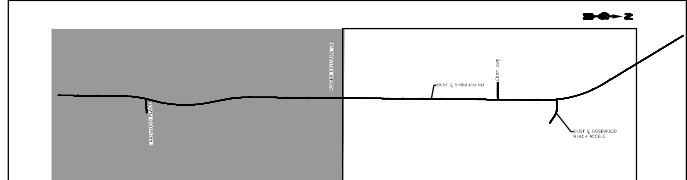
+00.00
12.43 LT
TC 640.44
BC 640.06

ELEV 640.37

+00.00
12.43 RT
TC 640.44
BC 640.06

FOR INFORMATION ONLY

KEY MAP



MODEL: Default
FILE NAME: P:\00010822\Design\Draw\Civil\CADD_Sheets\TREE.D162702-eh-detail1.dgn

RME

Rubinos & Mesia
Engineers, Inc.
200 S. Michigan Avenue, Suite 1500, Chicago, IL 60604-6482

USER NAME	= Valvarez	DESIGNED	- PH	REVISED	-
		DRAWN	- VEA	REVISED	-
PLOT SCALE	= 20,0018 ' / in.	CHECKED	- MF	REVISED	-
PLOT DATE	= 7/3/2025	DATE	- 8/30/2025	REVISED	-

STATE OF ILLINOIS
DEPARTMENT OF TRANSPORTATION

PROPOSED GRADING - PROJECT LOCATION 1
SHERIDAN ROAD

SCALE: 1:10 SHEET 1 OF 2 SHEETS STA. 104+29.66 TO STA. 109+40.00

F.A.U RTE.	SECTION	COUNTY	TOTAL SHEETS	SHEET NO.
3506	2024-980-TR	LAKE	21	16
CONTRACT NO. 62X00				
ILLINOIS FED. AID PROJECT				

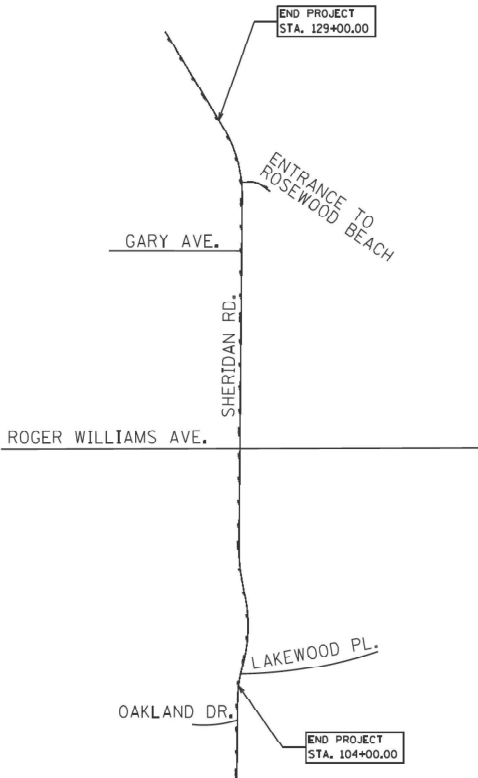
STATE OF ILLINOIS
DEPARTMENT OF TRANSPORTATION
DIVISION OF HIGHWAYS

PLAT OF HIGHWAYS

ROUTE: SHERIDAN RD.
SECTION:
COUNTY: LAKE
LIMITS: 104 + 00 TO 129 + 00
JOB NO: R-91-005-17

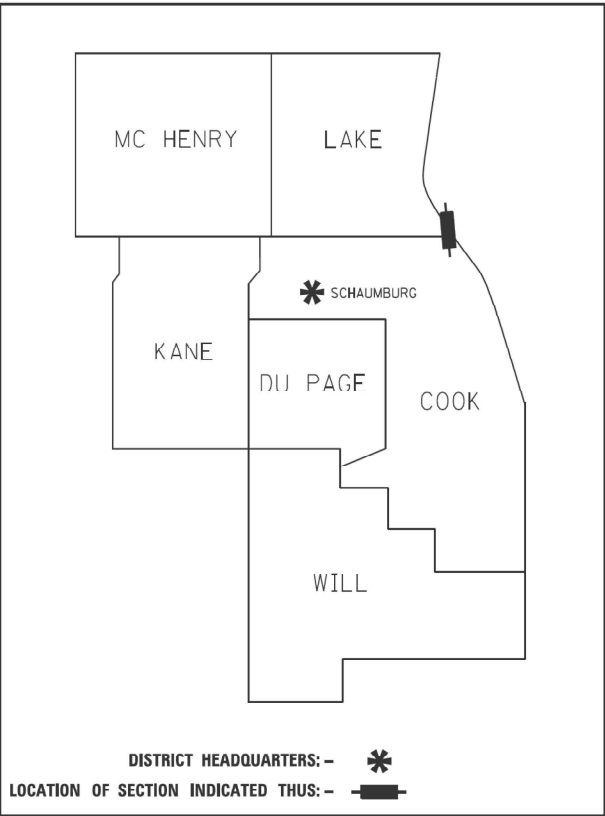
PARCEL NUMBER	OWNER	SHEET NUMBER	PROPERTY ACQUIRED BY
1NA0001TE-A	VITALI HANTSEVICH AND ALENA GOLUBEVA, HUSBAND AND WIFE, AS TENANTS BY THE ENTIRETY	2	
1NA0001TE-B		2	
1NA0002TE	MICHAN WALKER AND KATHARINA WALKER	2	
1NA0003TE	ELLEN SMITH AND JEFF SMITH, WIFE AND HUSBAND, AS TENANTS BY THE ENTIRETY	2	
1NA0004TE	DAVID CUNLIFFE AND DESIREE RUHSTRAT, HUSBAND AND WIFE, AS TENANTS IN THE ENTIRETY	2	
1NA0006TE	WILLIAM TERMAN AND PATRICIA TALAMO TERMAN, HUSBAND AND WIFE, AS TENANTS BY THE ENTIRETY	3	
1NA0007TE	RIDAS KALADE	4	
1NA0008TE	LAKEVIEW PROPERTIES, LLC, A WYOMING LIMITED LIABILITY COMPANY	4	
1NA0009TE	PARK DISTRICT OF HIGHLAND PARK, A MUNICIPAL CORPORATION	3	
1NA0010TE	STEPHEN J. SPERCO AND CAROL SPERCO, AS TENANTS BY THE ENTIRETY	4	
1NA0011TE	CHICAGO TITLE LAND TRUST COMPANY, AS TRUSTEE UNDER A TRUST AGREEMENT DATED THE 3RD OF MAY, 2017 AND KNOWN AS TRUST NUMBER 8002374488	3	

PARCEL NOT ACQUIRED



PROJECT LENGTH = 2,500 FT. = 0.474 MILE

LOCATION MAP



PRINTED BY THE AUTHORITY
OF THE STATE OF ILLINOIS

Model: Default
File Name: P:\R000_0922\Design\Draw\Civil\CADD Sheets\THEED162002-HR-parcel1.dgn



Rubinos & Mesia
Engineers, Inc.

200 S. Michigan Avenue, Suite 1500, Chicago, IL 60604-2482

USER NAME = Valvarez	DESIGNED - PH	REVISED -
	DRAWN - VEA	REVISED -
PLOT SCALE = 80.0000' / in.	CHECKED - MF	REVISED -
PLOT DATE = 7/3/2025	DATE - 8/30/2025	REVISED -

STATE OF ILLINOIS
DEPARTMENT OF TRANSPORTATION

PLAT OF HIGHWAYS
SHERIDAN ROAD

SCALE: SHEET OF SHEETS STA. TO STA.

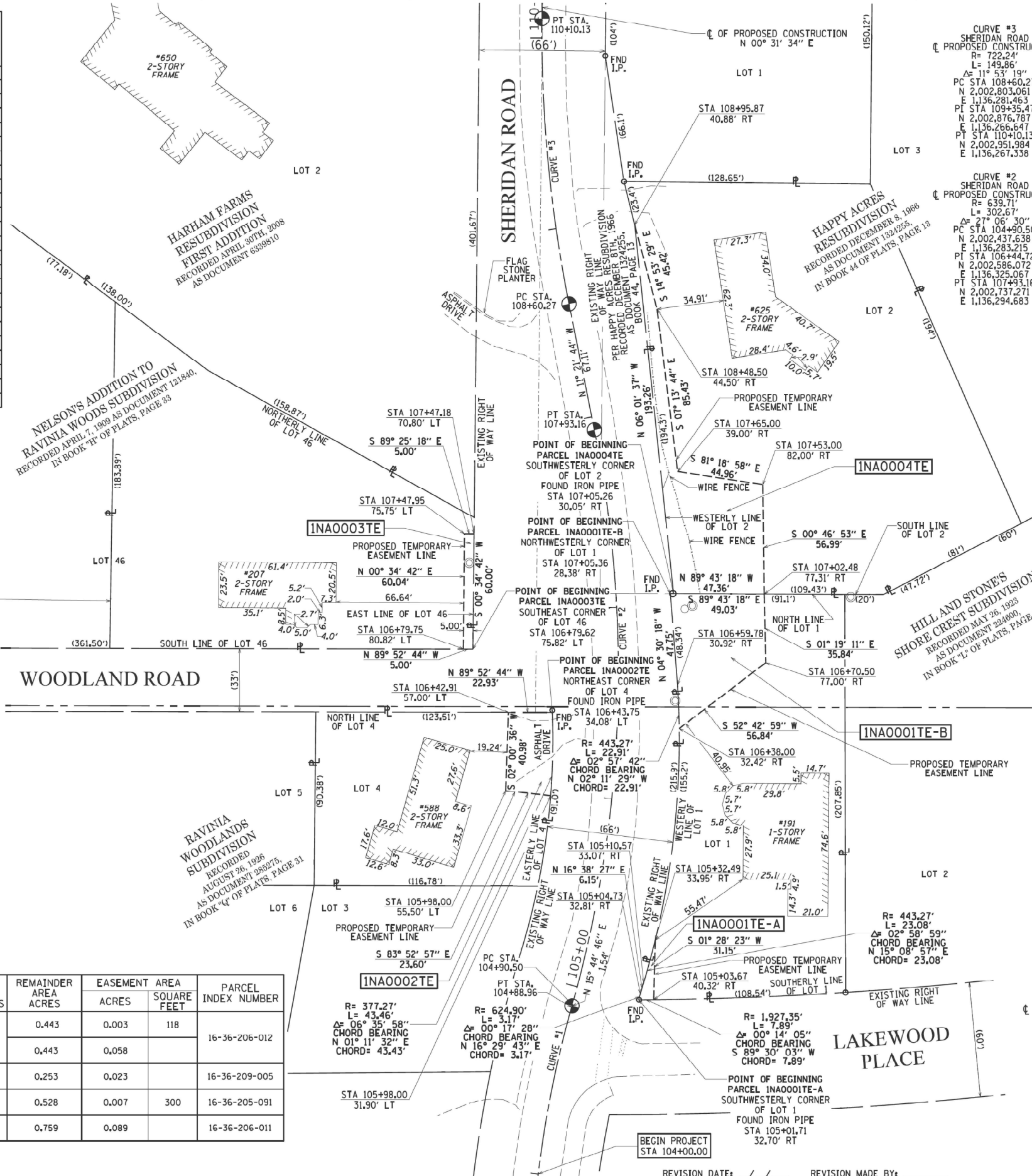
F.A.U. RTE.	SECTION	COUNTY	TOTAL SHEETS	SHEET NO.
3506	2024-980-TR	LAKE	21	18
CONTRACT NO. 62X00				
ILLINOIS FED. AID PROJECT				

APPROVED
By certamom at 10:37 am, Nov 30, 2021

PART OF THE NORTHEAST QUARTER OF SECTION 36, TOWNSHIP 43 NORTH, RANGE 12 EAST OF THE THIRD PRINCIPAL MERIDIAN, LAKE COUNTY, ILLINOIS.

COORDINATES ARE BASED ON THE ILLINOIS STATE PLANE COORDINATE SYSTEM, EAST ZONE, NAD 83 (2011). THE SOUTHWESTERLY CORNER OF LOT 1 IN HAPPY ACRES RESUB. HAS A VALUE OF 2,002,866.903 NORTH & 1,136,310.135 EAST

STATION	OFFSET	NORTH	EAST
105+01.71	32.70' RT	2,002,440.140	1,136,317.790
105+03.67	40.32' RT	2,002,440.208	1,136,325.682
105+04.73	32.81' RT	2,002,443.183	1,136,318.691
105+10.57	33.07' RT	2,002,449.075	1,136,320.452
105+32.49	33.95' RT	2,002,471.350	1,136,326.483
105+98.00	31.90' LT	2,002,546.467	1,136,271.858
105+98.00	55.50' LT	2,002,548.982	1,136,248.394
106+38.00	32.42' RT	2,002,581.513	1,136,338.983
106+42.91	57.00' LT	2,002,589.937	1,136,249.831
106+43.75	34.08' LT	2,002,589.889	1,136,272.762
106+59.78	30.92' RT	2,002,604.406	1,136,338.107
106+70.50	77.00' RT	2,002,615.943	1,136,384.205
106+79.62	75.82' LT	2,002,622.977	1,136,231.278
106+79.75	80.82' LT	2,002,622.987	1,136,226.278
107+02.48	77.31' RT	2,002,651.771	1,136,383.380
107+05.26	30.05' RT	2,002,652.001	1,136,336.026
107+05.36	28.38' RT	2,002,652.009	1,136,334.356
107+47.18	70.80' LT	2,002,682.974	1,136,231.884
107+47.95	75.75' LT	2,002,683.024	1,136,226.884
107+53.00	82.00' RT	2,002,708.752	1,136,382.603
107+65.00	39.00' RT	2,002,715.540	1,136,338.159
108+48.50	44.50' RT	2,002,800.290	1,136,327.409
108+95.87	40.88' RT	2,002,844.189	1,136,315.735



LEGEND

SECTION CORNER 16 QUARTER SECTION CORNER 15

GRAPHIC SCALE
FEET
0 10 20
SCALE: 1"= 30'

BEARINGS ARE REFERENCED TO THE ILLINOIS STATE PLANE COORDINATE SYSTEM, NAD83 (2011 ADJUSTMENT), EAST ZONE AND THE WEST EXISTING RIGHT OF WAY LINE OF SHERIDAN ROAD BEARS N 00° 34' 42" W

SECTION - QUARTER SECTION LINE
PLATTED LOT LINES
PROPERTY (DEED) LINE
APPARENT PROPERTY LINE
EXISTING CENTERLINE
PROPOSED CENTERLINE
EXISTING RIGHT OF WAY LINE
PROPOSED RIGHT OF WAY LINE
EXISTING EASEMENT
PROPOSED EASEMENT
EXISTING ACCESS CONTROL LINE
PROPOSED ACCESS CONTROL LINE
MEASURED DIMENSION
COMPUTED DIMENSION
RECORDED DIMENSION
EXISTING BUILDING

IRON PIPE OR ROD FOUND
CUT CROSS FOUND OR SET

“MAC” NAIL SET
5/8" REBAR SET

- SURVEY NOTES:**
- ALL DIMENSIONS ARE MEASURED UNLESS OTHERWISE SPECIFIED.
 - BEARING, DISTANCES, AND COORDINATES SHOWN HEREON REFERENCE THE ILLINOIS STATE PLANE COORDINATE SYSTEM, EAST ZONE, NORTH AMERICAN DATUM OF 1983 (2011 ADJUSTMENT) "GRID".
 - ALL MEASURED AND CALCULATED DISTANCES ARE "GRID" NOT "GROUND". TO OBTAIN GROUND DISTANCES, DIVIDE GRID DISTANCES SHOWN BY THE COMBINATION FACTOR OF 0.99997500.
 - AREAS SHOWN ON THIS PLAT ARE "GROUND".
 - FIELD SURVEY COMPLETED ON MARCH 11, 2019.

- STAKING OF PROPOSED RIGHT OF WAY. SET DIVISION OF HIGHWAYS SURVEY MARKER TO MONUMENT THE POSITION SHOWN, IDENTIFIED BY INSCRIPTION DATA AND SURVEYORS REGISTRATION NUMBER.
- STAKING OF PROPOSED RIGHT OF WAY IN CULTIVATED AREAS. BURIED 5/8 INCH METAL ROD 20 INCHES BELOW GROUND TO MARK FUTURE SURVEY MARKER POSITION IDENTIFIED BY COLORED PLASTIC CAP BEARING SURVEYORS REGISTRATION NUMBER.

PERMANENT SURVEY MARKER, I.D.O.T. STANDARD 2135 (TO BE SET BY OTHERS)
RIGHT OF WAY STAKING PROPOSED TO BE SET

STATE OF ILLINOIS)
COUNTY OF COOK)

THIS IS TO CERTIFY THAT WE, ENVIRONMENTAL DESIGN INTERNATIONAL INC., ILLINOIS PROFESSIONAL DESIGN FIRM LAND SURVEYING CORPORATION, NUMBER 184-001224, HAVE SURVEYED THE PLAT OF HIGHWAYS SHOWN HEREON IN SECTION 36, TOWNSHIP 43 NORTH, RANGE 12 EAST OF THE THIRD PRINCIPAL MERIDIAN, LAKE COUNTY, THAT THE SURVEY IS TRUE AND COMPLETE AS SHOWN TO THE BEST OF MY KNOWLEDGE AND BELIEF, THAT THE PLAT CORRECTLY REPRESENTS SAID SURVEY, THAT ALL MONUMENTS FOUND AND ESTABLISHED ARE OF PERMANENT QUALITY AND OCCUPY THE POSITIONS SHOWN THEREON AND THAT THE MONUMENTS ARE SUFFICIENT TO ENABLE THE SURVEY TO BE RETRACED, MADE FOR THE DEPARTMENT OF TRANSPORTATION, STATE OF ILLINOIS.

DATED AT CHICAGO, ILLINOIS THIS 15TH DAY OF FEBRUARY, A.D. 2021.

WILLIAM J. FLEMING
ILLINOIS PROFESSIONAL LAND SURVEYOR NO. 35-003226
LICENSE EXPIRATION DATE: 11/30/2022

THIS PROFESSIONAL SERVICE CONFORMS TO THE CURRENT ILLINOIS MINIMUM STANDARDS FOR A BOUNDARY SURVEY.



PARCEL NUMBER	TOTAL HOLDINGS ACRES	PART TAKEN ACRES	AREA IN EXISTING R.O.W. ACRES	REMAINDER AREA ACRES	EASEMENT ACRES	AREA SQUARE FEET	PARCEL INDEX NUMBER
1NA0001TE-A	0.443			0.443	0.003	118	16-36-206-012
1NA0001TE-B				0.443	0.058		
1NA0002TE	0.253			0.253	0.023		16-36-209-005
1NA0003TE	0.528			0.528	0.007	300	16-36-205-091
1NA0004TE	0.759			0.759	0.089		16-36-206-011

STATE OF ILLINOIS
DEPARTMENT OF TRANSPORTATION

PLAT OF HIGHWAYS
SHERIDAN ROAD

EDI PROJECT 1173.023.31

ED I Environmental Design International Inc.
Civil, Survey, Environmental and Construction Inspection Services
33 W. MONROE STREET, SUITE 1825, CHICAGO, IL 60603
Ph: (312) 345-1400 Fax: (312)345-0529
www.edienvi.com MBE/WBE/DBE

excellence. dedication. innovation

PLAT OF HIGHWAYS
STATE OF ILLINOIS
DEPARTMENT OF TRANSPORTATION
SHERIDAN ROAD

LIMITS: AT LAKE COOK ROAD COUNTY: LAKE
SECTION: AT SN: 049-0595 & 049-0596 JOB NO.: R-91-005-17
STATION 104+00.00 TO 129+00.00
SCALE: 1" = 30'

BUREAU OF LAND ACQUISITION
201 WEST CENTER COURT
SCHAUMBURG, ILLINOIS 60196

F.A.U. RTE.	SECTION	COUNTY	TOTAL SHEETS	SHEET NO.
3506	2024-980-TR	LAKE	21	19

CONTRACT NO. 62X00

ILLINOIS | FED. AID PROJECT

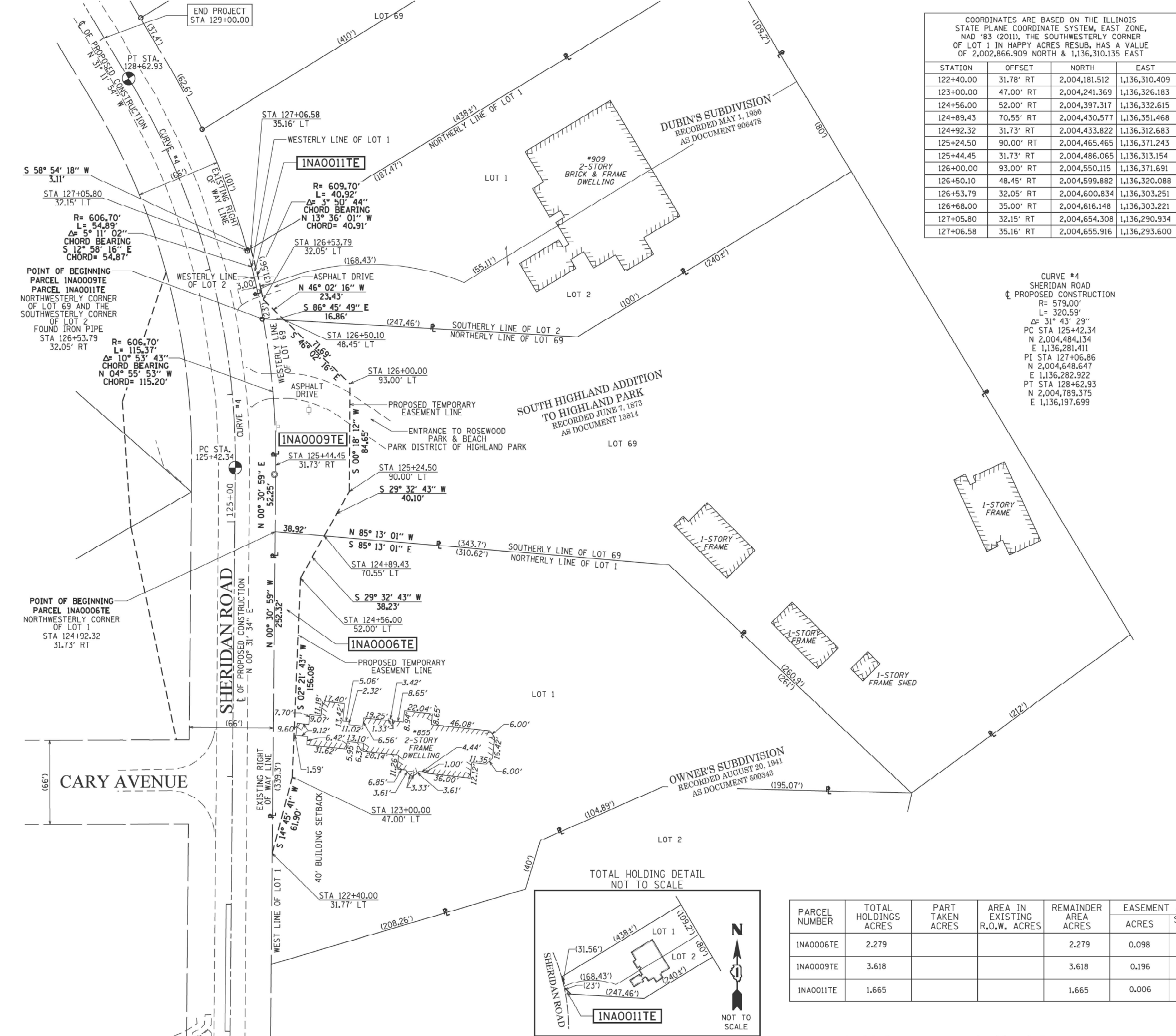
MODEL: Default
FILE NAME: F:\16360_09222\Design\Draw\Civil\CADD Sheets\THEED162702-JHT-parcel2.dgn

RME Rubinos & Mesia Engineers, Inc.
200 S. Michigan Avenue, Suite 1500, Chicago, IL 60604-2482

USER NAME = Valvarez	DESIGNED - PH	REVISED -
	DRAWN - VEA	REVISED -
PLOT SCALE = 60.0000' / in.	CHECKED - MF	REVISED -
PLOT DATE = 7/3/2025	DATE - 8/30/2025	REVISED -

REVISION DATE: / / REVISION MADE BY:

PART OF THE SOUTHEAST QUARTER OF FRACTIONAL SECTION 25, TOWNSHIP 43 NORTH, RANGE 12 EAST OF THE THIRD PRINCIPAL MERIDIAN, LAKE COUNTY, ILLINOIS.



LEGEND

SECTION CORNER 16 QUARTER SECTION CORNER

GRAPHIC SCALE
0 40
FEET
SCALE: 1"= 40'

BEARINGS ARE REFERENCED TO THE ILLINOIS STATE PLANE COORDINATE SYSTEM, NAD83 (2011 ADJUSTMENT), EAST ZONE AND THE WEST SHERIDAN ROAD BEARS N 00° 34' 42" W

SECTION - QUARTER SECTION LINE
PLATTED LOT LINES
PROPERTY (DEED) LINE
APPARENT PROPERTY LINE
EXISTING CENTERLINE
PROPOSED CENTERLINE
EXISTING RIGHT OF WAY LINE
PROPOSED RIGHT OF WAY LINE
EXISTING EASEMENT
PROPOSED EASEMENT
EXISTING ACCESS CONTROL LINE
PROPOSED ACCESS CONTROL LINE
MEASURED DIMENSION
COMPUTED DIMENSION
RECORDED DIMENSION
EXISTING BUILDING

IRON PIPE OR ROD FOUND
CUT CROSS FOUND OR SET
"MAG" NAIL SET
5/8" REBAR SET

SURVEY NOTES:

- ALL DIMENSIONS ARE MEASURED UNLESS OTHERWISE SPECIFIED.
- BEARING, DISTANCES, AND COORDINATES SHOWN HEREON REFERENCE THE ILLINOIS STATE PLANE COORDINATE SYSTEM, EAST ZONE, NORTH AMERICAN DATUM OF 1983 (2011 ADJUSTMENT) "GRID".
- ALL MEASURED AND CALCULATED DISTANCES ARE "GRID" NOT "GROUND". TO OBTAIN GROUND DISTANCES, DIVIDE GRID DISTANCES SHOWN BY THE COMBINATION FACTOR OF 0.99997500.
- AREAS SHOWN ON THIS PLAT ARE "GROUND".
- FIELD SURVEY COMPLETED ON MARCH 11, 2019.

STAKING OF PROPOSED RIGHT OF WAY. SET DIVISION OF HIGHWAYS SURVEY MARKER TO MONUMENT THE POSITION SHOWN, IDENTIFICATION BY INSCRIPTION DATA AND SURVEYORS REGISTRATION NUMBER.

STAKING OF PROPOSED RIGHT OF WAY IN CULTIVATED AREAS. BURIED 5/8 INCH METAL ROD 20 INCHES BELOW GROUND TO MARK FUTURE SURVEY MARKER POSITION IDENTIFIED BY COLORED PLASTIC CAP BEARING SURVEYORS REGISTRATION NUMBER.

PERMANENT SURVEY MARKER, I.D.O.T. STANDARD 2135 (TO BE SET BY OTHERS)

RIGHT OF WAY STAKING PROPOSED TO BE SET

STATE OF ILLINOIS)
COUNTY OF COOK)

THIS IS TO CERTIFY THAT WE, ENVIRONMENTAL DESIGN INTERNATIONAL INC, ILLINOIS PROFESSIONAL DESIGN FIRM LAND SURVEYING CORPORATION, NUMBER 184-001224, HAVE SURVEYED THE PLAT OF HIGHWAYS SHOWN HEREON IN SECTION 36, TOWNSHIP 43 NORTH, RANGE 12 EAST OF THE THIRD PRINCIPAL MERIDIAN, LAKE COUNTY, THAT THE SURVEY IS TRUE AND COMPLETE AS SHOWN TO THE BEST OF MY KNOWLEDGE AND BELIEF, THAT THE PLAT CORRECTLY REPRESENTS SAID SURVEY, THAT ALL MONUMENTS FOUND AND ESTABLISHED ARE OF PERMANENT QUALITY AND OCCUPY THE POSITIONS SHOWN THEREON AND THAT THE MONUMENTS ARE SUFFICIENT TO ENABLE THE SURVEY TO BE RETRACED, MADE FOR THE DEPARTMENT OF TRANSPORTATION, STATE OF ILLINOIS.

DATED AT CHICAGO, ILLINOIS THIS 22ND DAY OF APRIL, A.D. 2019.

WILLIAM J. FLEMING
ILLINOIS PROFESSIONAL LAND SURVEYOR NO. 35-003226
LICENSE EXPIRATION DATE: 11/30/2020

THIS PROFESSIONAL SERVICE CONFORMS TO THE CURRENT ILLINOIS MINIMUM STANDARDS FOR A BOUNDARY SURVEY.



EDI PROJECT 1173.023.31

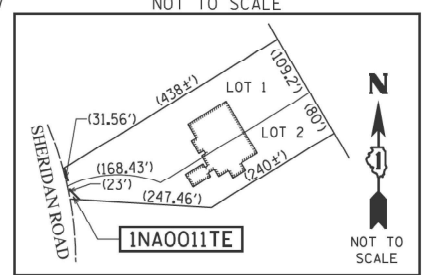
EDI Environmental Design International Inc.
Civil, Survey, Environmental and Construction Inspection Services
33 W. MONROE STREET, SUITE 1825, CHICAGO, IL 60603
Ph. (312) 345-1400 Fax (312) 345-0529
www.ediinc.com MBE/WBE/DBE

PLAT OF HIGHWAYS
STATE OF ILLINOIS
DEPARTMENT OF TRANSPORTATION
SHERIDAN ROAD

LIMITS: AT LAKE COOK ROAD COUNTY: LAKE
SECTION: AT SN: 049-0595 & 049-0596 JOB NO.: R-91-005-17
STATION 104+00.00 TO 129+00.00
SCALE: 1" = 40' SHEET 3 OF 4 SHEETS

BUREAU OF LAND ACQUISITION
201 WEST CENTER COURT
SCHAUMBURG, ILLINOIS 60196

PARCEL NUMBER	TOTAL HOLDINGS ACRES	PART TAKEN ACRES	AREA IN EXISTING R.O.W. ACRES	REMAINDER AREA ACRES	EASEMENT AREA		PARCEL INDEX NUMBER
					ACRES	SQUARE FEET	
1NA0006TE	2.279			2.279	0.098		16-25-405-012
1NA0009TE	3.618			3.618	0.196		16-25-405-011
1NA0011TE	1.665			1.665	0.006	270	16-25-405-010



RME Rubino & Mesia Engineers, Inc.
200 S. Michigan Avenue, Suite 1500, Chicago, IL 60604-2482

USER NAME = Valvarez	DESIGNED - PH	REVISED -
PLOT SCALE = 80.0000' / in.	DRAWN - VEA	REVISED -
PLOT DATE = 7/3/2025	CHECKED - MF	REVISED -
	DATE - 8/30/2025	REVISED -

STATE OF ILLINOIS
DEPARTMENT OF TRANSPORTATION

PLAT OF HIGHWAYS
SHERIDAN ROAD

SCALE: SHEET OF SHEETS STA. TO STA.

F.A.U. RTE.	SECTION	COUNTY	TOTAL SHEETS	SHEET NO.
3506	2024-980-TR	LAKE	21	20

CONTRACT NO. 62X00

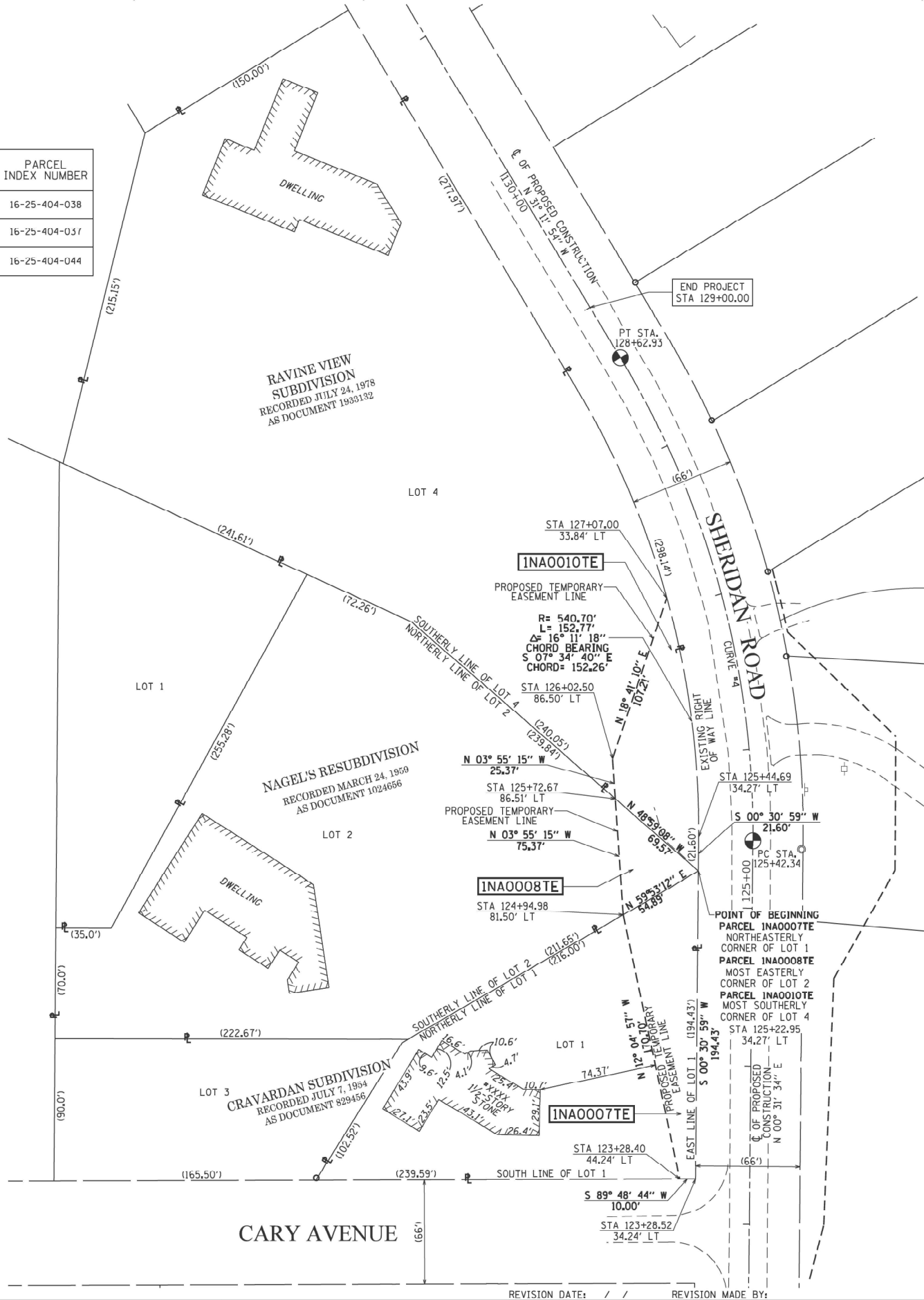
ILLINOIS FED. AID PROJECT

PART OF THE SOUTHEAST QUARTER OF FRACTIONAL SECTION 25, TOWNSHIP 43 NORTH, RANGE 12 EAST OF THE THIRD PRINCIPAL MERIDIAN, LAKE COUNTY, ILLINOIS.

PARCEL NUMBER	TOTAL HOLDINGS ACRES	PART TAKEN ACRES	AREA IN EXISTING R.O.W. ACRES	REMAINDER AREA ACRES	EASEMENT ACRES	AREA SQUARE FEET	PARCEL INDEX NUMBER
1NA0007TE	0.653	0		0.653	0.125		16-25-404-038
1NA0008TE	1.539	0		1.539	0.041		16-25-404-031
1NA00101E	2.326	0		2.326	0.123		16-25-404-044

COORDINATES ARE BASED ON THE ILLINOIS STATE PLANE COORDINATE SYSTEM, EAST ZONE, NAD '83 (2011), THE SOUTHWESTERLY CORNER OF LOT 1 IN HAPPY ACRES RESUB. HAS A VALUE OF 2,002,866.909 NORTH & 1,136,310.135 EAST			
STATION	OFFSET	NORTH	EAST
123+28.40	44.24' LT	2,004,270.605	1,136,235.210
123+28.52	34.24' LT	2,004,270.638	1,136,245.210
124+94.98	81.50' LT	2,004,437.521	1,136,199.479
125+22.95	34.27' LT	2,004,465.060	1,136,246.962
125+44.69	34.27' LT	2,004,486.659	1,136,247.156
125+72.67	86.51' LT	2,004,510.721	1,136,194.462
126+02.50	86.50' LT	2,004,536.028	1,136,192.728
127+07.00	33.84' LT	2,004,637.590	1,136,227.077

CURVE #4
SHERIDAN ROAD
PROPOSED CONSTRUCTION
R= 579.00'
L= 320.59'
Δ= 31° 43' 29"
PC STA 125+42.34
N 2,004,484.134
E 1,136,281.411
PI STA 127+06.86
N 2,004,648.647
E 1,136,282.922
PT STA 128+62.93
N 2,004,789.375
E 1,136,197.699



SECTION CORNER

QUARTER SECTION CORNER

SECTION - QUARTER SECTION LINE

PLATTED LOT LINES

PROPERTY (DEED) LINE

APPARENT PROPERTY LINE

EXISTING CENTERLINE

PROPOSED CENTERLINE

EXISTING RIGHT OF WAY LINE

PROPOSED RIGHT OF WAY LINE

EXISTING EASEMENT

PROPOSED EASEMENT

EXISTING ACCESS CONTROL LINE

PROPOSED ACCESS CONTROL LINE

MEASURED DIMENSION

COMPUTED DIMENSION

RECORDED DIMENSION

EXISTING BUILDING

LEGEND

IRON PIPE OR ROD FOUND

CUT CROSS FOUND OR SET

"MAG" NAIL SET

5/8" REBAR SET

GRAPHIC SCALE

FEET

0 40

SCALE: 1"= 40'

BEARINGS ARE REFERENCED TO THE ILLINOIS STATE PLANE COORDINATE SYSTEM, NAD83 (2011 ADJUSTMENT), EAST ZONE AND THE WEST EXISTING RIGHT OF WAY LINE OF SHERIDAN ROAD BEARS N 00° 34' 42" W

- SURVEY NOTES:
- ALL DIMENSIONS ARE MEASURED UNLESS OTHERWISE SPECIFIED.
 - BEARING, DISTANCES, AND COORDINATES SHOWN HEREON REFERENCE THE ILLINOIS STATE PLANE COORDINATE SYSTEM, EAST ZONE, NORTH AMERICAN DATUM OF 1983 (2011 ADJUSTMENT) "GRID".
 - ALL MEASURED AND CALCULATED DISTANCES ARE "GRID" NOT "GROUND". TO OBTAIN GROUND DISTANCES, DIVIDE GRID DISTANCES SHOWN BY THE COMBINATION FACTOR OF 0.99997500.
 - AREAS SHOWN ON THIS PLAT ARE "GROUND".
 - FIELD SURVEY COMPLETED ON MARCH 11, 2019.
- STAKING OF PROPOSED RIGHT OF WAY. SET DIVISION OF HIGHWAYS SURVEY MARKER TO MONUMENT THE POSITION SHOWN, IDENTIFIED BY INSCRIPTION DATA AND SURVEYORS REGISTRATION NUMBER.
- STAKING OF PROPOSED RIGHT OF WAY IN CULTIVATED AREAS. BURIED 5/8 INCH METAL ROD 20 INCHES BELOW GROUND TO MARK FUTURE SURVEY MARKER POSITION IDENTIFIED BY COLORED PLASTIC CAP BEARING SURVEYORS REGISTRATION NUMBER.
- PERMANENT SURVEY MARKER, I.D.O.T. STANDARD 2135 (TO BE SET BY OTHERS)
- RIGHT OF WAY STAKING PROPOSED TO BE SET

STATE OF ILLINOIS)
COUNTY OF COOK)

THIS IS TO CERTIFY THAT WE, ENVIRONMENTAL DESIGN INTERNATIONAL INC, ILLINOIS PROFESSIONAL DESIGN FIRM LAND SURVEYING CORPORATION, NUMBER 184-001224, HAVE SURVEYED THE PLAT OF HIGHWAYS SHOWN HEREON IN SECTION 25, TOWNSHIP 43 NORTH, RANGE 12 EAST OF THE THIRD PRINCIPAL MERIDIAN, LAKE COUNTY, THAT THE SURVEY IS TRUE AND COMPLETE AS SHOWN TO THE BEST OF MY KNOWLEDGE AND BELIEF, THAT THE PLAT CORRECTLY REPRESENTS SAID SURVEY, THAT ALL MONUMENTS FOUND AND ESTABLISHED ARE OF PERMANENT QUALITY AND OCCUPY THE POSITIONS SHOWN THEREON AND THAT THE MONUMENTS ARE SUFFICIENT TO ENABLE THE SURVEY TO BE RETRACED, MADE FOR THE DEPARTMENT OF TRANSPORTATION, STATE OF ILLINOIS.

DATED AT CHICAGO, ILLINOIS THIS 22ND DAY OF APRIL, A.D. 2019.

WILLIAM J. FLEMING
ILLINOIS PROFESSIONAL LAND SURVEYOR NO. 35-003226
LICENSE EXPIRATION DATE: 11/30/2020

THIS PROFESSIONAL SERVICE CONFORMS TO THE CURRENT ILLINOIS MINIMUM STANDARDS FOR A BOUNDARY SURVEY.

EDI PROJECT 1173,023,31

EDI

Environmental Design International Inc.
Civil, Survey, Environmental and Construction Inspection Services
33 W. MONROE STREET, SUITE 1825, CHICAGO, IL 60603
Ph. (312) 345-1400 Fax (312) 345-0529
www.edi-design.com MBE/WBE/DBE

Excellence. Dedication. Innovation.

PLAT OF HIGHWAYS

STATE OF ILLINOIS

DEPARTMENT OF TRANSPORTATION

SHERIDAN ROAD

LIMITS: AT LAKE COOK ROAD COUNTY: LAKE
SECTION: AT SN: 049-0595 & 049-0596 JOB NO.: R-01-005-17
STATION 104+00 TO 129+00
SCALE: 1" = 40' SHEET 4 OF 4 SHEETS

BUREAU OF LAND ACQUISITION

201 WEST CENTER COURT

SCHAUMBURG, ILLINOIS 60196

<div><div>RME</div><div>Rubinos & Mesia Engineers, Inc. <small>200 S. Michigan Avenue, Suite 1500, Chicago, IL 60604-2482</small></div></div>	USER NAME = VALVAREZ		DESIGNED - PH	REVISED -	STATE OF ILLINOIS DEPARTMENT OF TRANSPORTATION	PLAT OF HIGHWAYS SHERIDAN ROAD				F.A.U RTE.	SECTION	COUNTY	TOTAL SHEETS	SHEET NO.
			DRAWN - VEA	REVISED -										
	PLOT SCALE = 80.0000' / in.		CHECKED - MF	REVISED -										
	PLOT DATE = 7/3/2025		DATE - 8/30/2025	REVISED -										
						SCALE:	SHEET	OF	SHEETS	STA.	TO STA.		CONTRACT NO. 62X00	
											ILLINOIS	FED. AID PROJECT		

MODEL: Default
FILE NAME: F:\R00_0922\Design\Draw\Civil\CADD Streets\TRED162702-JR-parcel.dgn