

STATE OF ILLINOIS
DEPARTMENT OF TRANSPORTATION

1

FAU ROUTE	SECTION	COUNTY	TOTAL SHEETS	SHEET NO.
1360	(21B-NRM-4) BR 25	COOK	36	1
ILLINOIS CONTRACT NO. 62Y12				
* 36 + 1 = 37 TOTAL SHEETS				

FOR INDEX OF SHEETS AND HIGHWAY
STANDARDS, SEE SHEET NO. 2

THIS PROJECT IS LOCATED IN THE CITY OF
CHICAGO

PROPOSED HIGHWAY PLANS

FAU ROUTE 1360: FOSTER AVENUE
OVER NORTH SHORE CHANNEL
SECTION: (21B-NRM-4) BR 25
PROJECT: BR-8P9N(708)

BRIDGE DECK OVERLAY, BRIDGE JOINT REPLACE AND REPAIR
COOK COUNTY

C-91-188-25

TRAFFIC DATA

2023 ADT = 19,100 VPD

POSTED SPEED LIMIT = 30 MPH

MINOR ARTERIAL

PROJECT LOCATION
FOSTER AVE OVER
N SHORE CHANNEL
STRUCTURE NO. 016-0251

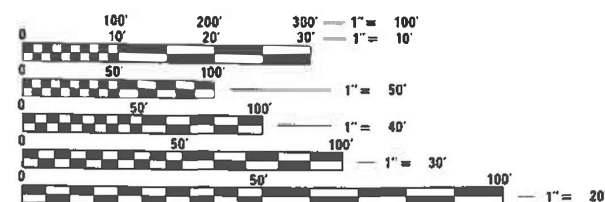
40N



JEFFERSON TOWNSHIP

GROSS LENGTH = 269 FT. = 0.05 MILE

NET LENGTH = 269 FT. = 0.05 MILE



FULL SIZE PLANS HAVE BEEN PREPARED USING STANDARD
ENGINEERING SCALES. REDUCED SIZED PLANS WILL NOT
CONFORM TO STANDARD SCALES. IN MAKING MEASUREMENTS
ON REDUCED PLANS, THE ABOVE SCALES MAY BE USED.

J.U.L.I.E.
JOINT UTILITY LOCATION INFORMATION FOR EXCAVATION
1-800-892-0123
OR 811

PROJECT ENGINEER: VESELIN VELICHKOV (847) 705-4432
PROJECT MANAGER: FAWAD AQUEEL

CONTRACT NO. 62Y12



Alexander Carl Lane
ALEXANDER CARL LANE, P.E.
IL LIC. NO. 062-063261

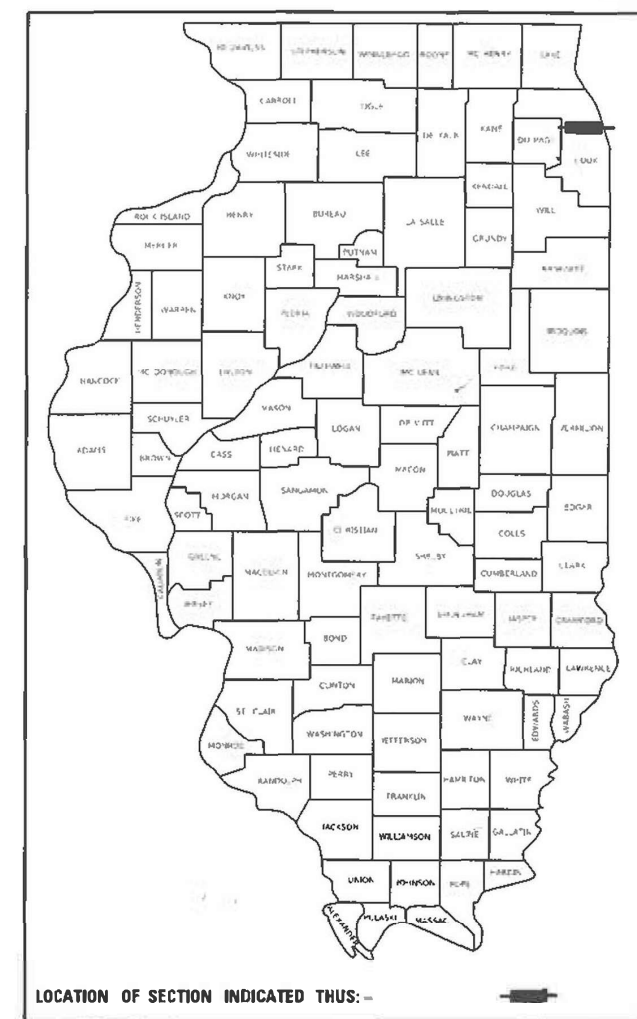
EXP: 11/30/2025

DATE: 06/13/2025

THIS SEAL AND SIGNATURE
PERTAINS TO SHEETS 1 TO 1

INFRASTRUCTURE
ENGINEERING INCORPORATED
1 South Wacker | Suite 2650 | Chicago, IL 60606
P 312.425.9546 | F 312.425.9549 | www.iae-inc.com

CONTACT: ALEXANDER LANE (312) 477-0620



LOCATION OF SECTION INDICATED THUS: —

STATE OF ILLINOIS
DEPARTMENT OF TRANSPORTATION

SUBMITTED

June 26th 2025
IR

REGIONAL ENGINEER

August 15 2025

ENGINEER OF DESIGN AND ENVIRONMENT

August 15 2025

DIRECTOR OF HIGHWAYS PROJECT IMPLEMENTATION

PRINTED BY THE AUTHORITY
OF THE STATE OF ILLINOIS

REVISED SHEET 9/9/2025

REV-SEP

INDEX OF SHEETS

SHEET NO.	TITLE
1	COVER SHEET
2	INDEX OF SHEETS, STATE STANDARDS, MIXTURE REQUIREMENTS, AND GENERAL NOTES
3	SUMMARY OF QUANTITIES
4	TYPICAL SECTIONS
5-8	TRAFFIC CONTROL PLANS
9	ROADWAY AND PAVEMENT MARKING PLAN
10-26	STRUCTURAL DRAWINGS - S.N. 016-0251
27	BD-02: DRIVEWAY DETAILS DISTANCE BETWEEN ROW AND FACE OF CURB < 15' (4.5m)
28	BD-08: DETAILS FOR FRAMES AND LIDS ADJUSTMENT WITH MILLING
29	BD-24: CURB AND GUTTER REMOVAL AND REPLACEMENT
30	BD-32: BUTT JOINT AND HMA TAPER DETAILS
31	TC-10: TRAFFIC CONTROL AND PROTECTION FOR SIDE ROADS, INTERSECTIONS, AND DRIVEWAYS
31A	TC-16: SHORT TERM PAVEMENT MARKING LETTERS AND SYMBOLS
32	TC-22: ARTERIAL ROAD INFORMATION SIGN
33-35	TC-24: CITY OF CHICAGO TYPICAL PAVEMENT MARKINGS
36	TC-26: DRIVEWAY ENTRANCE SIGNING

STATE STANDARDS

STANDARD NO.	DRAWING NAME
000001-08	STANDARD SYMBOLS, ABBREVIATIONS AND PATTERNS
701301-04	LANE CLOSURE, 2L, 2W, SHORT TIME OPERATIONS
701311-03	LANE CLOSURE 2L, 2W, MOVING OPERATIONS- DAY ONLY
701427-05	LANE CLOSURE, MULTILANE, INTERMITTENT OR MOVING OPERATION, FOR SPEEDS ≤ 40 MPH
701501-06	URBAN LANE CLOSURE, 2L, 2W, UNDIVIDED
701611-01	URBAN HALF ROAD CLOSURE, MULTILANE, 2W WITH MOUNTABLE MEDIAN
701801-06	SIDEWALK, CORNER OR CROSSWALK CLOSURE
701901-09	TRAFFIC CONTROL DEVICES
704001-08	TEMPORARY CONCRETE BARRIER
780001-05	TYPICAL PAVEMENT MARKINGS
782006-01	GUARDRAIL AND BARRIER WALL REFLECTOR MOUNTING DETAILS

HMA TABLE

HOT-MIX ASPHALT MIXTURE REQUIREMENTS		QUALITY MANAGEMENT PROGRAM (QMP)
MIXTURE TYPE	AIR VOIDS @ Ndes	
BUTT JOINT		
HOT-MIX ASPHALT SURFACE COURSE, MIX "D", IL-9.5, N70, 1-3/4"	4% @ 70 Gyr	QC/QA
QMP DESIGNATION: QUALITY CONTROL/ QUALITY ASSURANCE (QC/QA): QUALITY CONTROL FOR PERFORMANCE (QCP): PAY FOR PERFORMANCE (PFP)		


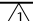
MIXTURE REQUIREMENT NOTES:

- 1.THE UNIT WEIGHT USED TO CALCULATE ALL HMA SURFACE MIXTURE QUANTITIES IS 112 LBS/SQ YD/IN.
- 2.THE "AC TYPE" FOR POLYMERIZED HMA MIXES SHALL BE "SBS/SBR PG 76 -22" AND FOR NON-POLYMERIZED HMA THE "AC TYPE" SHALL BE "PG 64-22" UNLESS MODIFIED BY RECLAIMED MATERIALS SPECIFICATIONS.

GENERAL NOTES

- THE EXACT LOCATION OF ALL UTILITIES SHALL BE FIELD VERIFIED BY THE CONTRACTOR BEFORE ORDERING ANY MATERIALS AND STARTING ANY WORK. FOR LOCATIONS OF UTILITIES, LOCALLY OWNED EQUIPMENT, LEASED ENFORCEMENT CAMERA SYSTEM FACILITIES AND IDOT UNDERGROUND FACILITIES, CONTACT THE LOCAL COUNTIES, MUNICIPALITIES AND IDOT FOR LOCATES.
- MEADE ELECTRIC COMPANY, THE IDOT DISTRICT ONE ELECTRICAL MAINTENANCE CONTRACTOR, LOCATES IDOT ELECTRICAL EQUIPMENT AND UNDERGROUND CABLES. CALL 773-287-7672 FOR THE INITIAL LOCATE. REQUEST FOR LOCATES OF PREVIOUSLY MARKED FACILITIES MAY BE AT THE CONTRACTOR'S EXPENSE.
- IN ADDITION TO FIELD REVIEW AND AERIAL DATA, PLAN DIMENSIONS AND DETAILS RELATIVE TO THE EXISTING FACILITIES HAVE BEEN TAKEN FROM EXISTING PLANS AND ARE SUBJECT TO CONSTRUCTION VARIATIONS, PLAN DIMENSIONS AND DETAILS RELATIVE TO EXISTING PLANS ARE SUBJECT TO ROUTINE VARIATIONS. IT SHALL BE THE CONTRACTOR'S RESPONSIBILITY TO VERIFY EXISTING DIMENSIONS AND DETAILS AFFECTING NEW CONSTRUCTION AND MAKE NECESSARY APPROVED ADJUSTMENTS PRIOR TO CONSTRUCTION OR ORDERING MATERIALS. SUCH VARIATIONS SHALL NOT BE CAUSE FOR ADDITIONAL COMPENSATION FOR A CHANGE IN THE SCOPE OF WORK. HOWEVER, THE CONTRACTOR WILL BE PAID FOR THE QUANTITY ACTUALLY FURNISHED AT THE BID PRICE FOR THE WORK.
- THE CONTRACTOR WILL NOT BE ALLOWED TO SET UP A YARD OR FIELD OFFICE ON STATE PROPERTY WITHOUT WRITTEN PERMISSION FROM THE DEPARTMENT.
- IT SHALL BE THE CONTRACTOR'S RESPONSIBILITY TO VERIFY ALL DIMENSIONS AND CONDITIONS EXISTING IN THE FIELD PRIOR TO BEGINNING CONSTRUCTION AND ORDERING MATERIALS.
- THE CONTRACTOR SHALL TAKE ALL NECESSARY PRECAUTIONS FOR THE PROTECTION OF EXISTING PLANT MATERIAL FOR WHICH THE CONTRACT DOES NOT PROVIDE REMOVAL. THE PROTECTION OF EXISTING PLANT MATERIAL AND THE REPAIR OR REPLACEMENT OF EXISTING PLANT MATERIAL DAMAGED BY THE CONTRACTOR SHALL BE DONE IN ACCORDANCE WITH THE REQUIREMENTS OF SECTION 201 OF THE STANDARD SPECIFICATIONS.
- THE DEPARTMENT HAS NOT OBTAINED ANY PERMITS FOR OFFSITE BORROW, WASTE, USE (BWU) AREAS. PRIOR TO WORKING IN BWU AREAS, IF THE CONTRACTOR CHOOSES TO USE ACTIVITIES REQUIRING PERMITS IT IS THE CONTRACTOR'S RESPONSIBILITY TO SECURE THE PROPER PERMITS. IN ADDITION TO THE BORROW REVIEW (BDE 2289) AND USE/WASTE REVIEW (BDE 2290) SUBMITTALS, THE CONTRACTOR SHALL SUBMIT AN EROSION AND SEDIMENT CONTROL (ESC) PLAN FOR EVERY BWU SITE TO THE DEPARTMENT FOR ACCEPTANCE. GUIDELINES FOR ACCEPTABLE BWU PRACTICES CAN BE FOUND IN SECTION 11.G.1. THE COST OF ALL MATERIALS AND LABOR NECESSARY TO COMPLY WITH THE ABOVE PROVISIONS TO PREPARE AND IMPLEMENT ESC PLANS WILL NOT BE PAID FOR SEPARATELY, BUT SHALL BE CONSIDERED AS INCLUDED IN THE CONTRACT UNIT PRICES AND NO ADDITIONAL COMPENSATION WILL BE ALLOWED.
- THE CONTRACTOR SHALL CONTACT KALPANA KANNAN-HOSADURGA, THE DISTRICT ONE TRAFFIC CONTROL SUPERVISOR AT KALPANA.KANNAN-HOSADURGA@ILLINOIS.GOV A MINIMUM OF 72 HOURS IN ADVANCE OF BEGINNING WORK.
- THE RESIDENT ENGINEER SHALL CONTACT FADI SULTAN, AREA TRAFFIC FIELD ENGINEER, AT FADI.SULTAN@ILLINOIS.GOV A MINIMUM OF TWO (2) WEEKS PRIOR TO THE PLACEMENT OF PERMANENT PAVEMENT MARKINGS.
- THE DEPARTMENT HAS DETERMINED THAT IN STREAM WORK IS NOT REQUIRED FOR THE WORK SPECIFIED IN THIS CONTRACT. THE DEPARTMENT HAS NOT OBTAINED A USACE PERMIT. IF THE CONTRACTOR CHOOSES TO USE ACTIVITIES REQUIRING AN USACE PERMIT, IT IS THE CONTRACTOR'S RESPONSIBILITY TO SECURE THE PROPER USACE PERMITS. THE COST OF ALL MATERIALS AND LABOR NECESSARY TO SECURE AND COMPLY WITH A USACE PERMIT FOR CONTRACTOR'S ACTIVITIES WILL NOT BE PAID FOR SEPARATELY, BUT SHALL BE CONSIDERED AS INCLUDED IN THE UNIT BID PRICES OF THE CONTRACT AND NO ADDITIONAL COMPENSATION WILL BE ALLOWED.
- THE CONTRACTOR SHALL USE CARE IN REMOVING OR EXCAVATING NEAR ALL EXISTING ITEMS WHICH WILL REMAIN. ANY DAMAGE DONE TO EXISTING ITEMS BY THE CONTRACTOR SHALL BE REPAIRED AT THE CONTRACTOR'S EXPENSE.
- SAW CUTTING PRIOR TO ANY REMOVAL ITEMS NOTED ON THE PLANS OR DIRECTED BY THE ENGINEER SHALL BE CONSIDERED INCLUDED IN THE COST OF THE ITEMS BEING REMOVED.
- FOR WORK OUTSIDE THE LIMITS OF BRIDGE APPROACH PAVEMENT. ALL REFERENCES IN THE HIGHWAY STANDARDS AND STANDARD SPECIFICATIONS FOR REINFORCEMENT, DOWEL BARS AND TIE BARS IN PAVEMENT SHALL BE EPOXY COATED UNLESS NOTED ON THE PLANS.
- DOUBLE LANE MARKERS ARE TO BE USED AS SHOWN ON THE DISTRICT ONE DETAIL "TYPICAL APPLICATIONS-RAISED REFLECTIVE PAVEMENT MARKERS (SNOW-PLOW RESISTANT)" SHOWN IN PLANS.
- THE CENTERLINE IS FOR INFORMATION ONLY.
- THE "ROAD CONSTRUCTION AHEAD" SIGNS SHALL REMAIN INSTALLED UNTIL THE COMPLETION OF THE PROJECT OR WHEN NO ROADWAY HAZARDS REMAIN WITHIN THE WORK ZONE.
- CHANGEABLE MESSAGE SIGNS SHALL BE INSTALLED TWO WEEKS PRIOR TO ALL ROAD CLOSURE, TRAFFIC STAGE CHANGES, AND NEW TRAFFIC SIGNAL TURN-ON EVENTS ON EACH APPROACH OF THE AFFECTED ROADWAY TO WARN MOTORISTS OF THE UPCOMING EVENT. THE SIGNS SHALL BE REMOVED TWO WEEKS THEREAFTER UNLESS THE SIGNS ARE NEEDED AGAIN FOR A SUBSEQUENT FUTURE EVENT THAT WILL OCCUR WITHIN 2 WEEKS ON THE SAME APPROACH OF THE EFFECTED ROADWAY. THE SIGN LOCATIONS SHALL BE (DETERMINED BY THE ENGINEER) PLACED AS DIRECTED BY THE ENGINEER.
- FRAME ADJUSTMENTS IN CHICAGO REQUIRE FULL DEPTH SAW CUTS WHICH ARE INCIDENTAL TO THE WORK
- CONTRACTOR MUST CONTACT CTA WITHIN A MINIMUM OF THREE WEEKS PRIOR TO ANY LANE OR STREET CLOSURES TO DISCUSS ANY IMPACTS TO BUS OPERATIONS, I.E. DETOURS, TEMPORARY BUS STOP RELOCATIONS OR ELIMINATIONS. TWO OR MORE CONSECUTIVE BUS STOP MAY NOT BE CLOSED AT THE SAME TIME. PLEASE CONTACT TRAFFIC.PLANNING@TRANSITCHICAGO.COM TO COORDINATE ANY BUS SERVICE ISSUES.
- THE LONGITUDINAL JOINT SEALANT SHALL BE PLACED UNDER THE SURFACE COURSE MIX.

MODEL : Default
FILE NAME: P:\P-22-22-4675-00 IDOT Various Phase 2 (PTB 208-002)\WO 31 62Y12\DGN\CADD_Sheets\62Y12-SHT-GENNOTES.dgn


	INFRASTRUCTURE ENGINEERING INCORPORATED 1 South Wacker Suite 2650 Chicago, IL 60606 P 312.425.9560 F 312.425.9560 www.infrastructure-eng.com	USER NAME = ATverdoknieb	DESIGNED - HA	REVISED -  AMT 8/20/25
			DRAWN - HA	REVISED -
			CHECKED - ACL	REVISED -
		PLOT DATE = 8/20/2025	DATE - 08/19/2025	REVISED -

STATE OF ILLINOIS
DEPARTMENT OF TRANSPORTATION

INDEX OF SHEETS, STATE STANDARDS, AND GENERAL NOTES
FOSTER AVENUE OVER NORTH SHORE CHANNEL

SCALE: NTS SHEET 1 OF 1 SHEETS STA. TO STA.

F.A.U. RTE.	SECTION	COUNTY	TOTAL SHEETS	SHEET NO.
1360	(21B-NRM-4) BR 25	COOK	36	2
CONTRACT NO. 62Y12				
		ILLINOIS	FED. AID PROJECT	

 REVISED SHEET 9/9/2025

MODEL: Default
FILE NAME: P:\P-22\22-4675-00\DOT Various Phase 2 (PTB 205-02)\WO 31 62Y12\DGNCADD_Sheets\62Y12-SHT-SQO.dgn

PAY ITEM NUMBER	DESIGNATION	UNIT	TOTAL QUANTITY	CONSTRUCTION CODE	
				0013	
				80% FEDERAL 20% STATE	100% STATE
20200100	EARTH EXCAVATION	CU YD	19	19	
40600290	BITUMINOUS MATERIALS (TACK COAT)	POUND	262	262	
40600370	LONGITUDINAL JOINT SEALANT	FOOT	363	363	
40600982	HOT-MIX ASPHALT SURFACE REMOVAL - BUTT JOINT	SQ YD	581	581	
40604062	HOT-MIX ASPHALT SURFACE COURSE, IL-9.5, MIX "D", N70	TON	57	57	
42300200	PORTLAND CEMENT CONCRETE DRIVEWAY PAVEMENT, 6 INCH	SQ YD	23	23	
42400200	PORTLAND CEMENT CONCRETE SIDEWALK 5 INCH	SQ FT	1,670	1,670	
44000600	SIDEWALK REMOVAL	SQ FT	1,876	1,876	
50102400	CONCRETE REMOVAL	CU YD	53.4	53.4	
50157300	PROTECTIVE SHIELD	SQ YD	598	598	
50300255	CONCRETE SUPERSTRUCTURE	CU YD	57.5	57.5	
50300300	PROTECTIVE COAT	SQ YD	726	726	
50800205	REINFORCEMENT BARS, EPOXY COATED	POUND	2,830	2,830	
50800515	BAR SPLICERS	EACH	28	28	
52000110	PREFORMED JOINT STRIP SEAL	FOOT	135	135	
60300305	FRAMES AND LIDS TO BE ADJUSTED	EACH	7	7	
63301990	REMOVE AND REERECT TRAFFIC BARRIER TERMINALS, TYPE 1	EACH	4	4	
* 66900200	NON-SPECIAL WASTE DISPOSAL	CU YD	20	20	
* 66900530	SOIL DISPOSAL ANALYSIS	EACH	1	1	
* 66901001	REGULATED SUBSTANCES PRE-CONSTRUCTION PLAN	L SUM	1	1	
* 66901003	REGULATED SUBSTANCES FINAL CONSTRUCTION REPORT	L SUM	1	1	
* 66901006	REGULATED SUBSTANCES MONITORING	CAL DA	2	2	
67100100	MOBILIZATION	L SUM	1	1	
70107025	CHANGEABLE MESSAGE SIGN	CAL DA	60	60	
70300150	SHORT TERM PAVEMENT MARKING REMOVAL	CAL DA	2,069	2,069	
70307120	TEMPORARY PAVEMENT MARKING - LINE 4" - TYPE IV TAPE	FOOT	4,851	4,851	
70300241	TEMPORARY PAVEMENT MARKING - LINE 6" - PAINT	FOOT	553	553	

* = SPECIALTY ITEM

PAY ITEM NUMBER	DESIGNATION	UNIT	TOTAL QUANTITY	CONSTRUCTION CODE	
				0013	
				80% FEDERAL 20% STATE	100% STATE
70307100	TEMPORARY PAVEMENT MARKING LETTER AND SYMBOLS - TYPE IV TAPE	SQ FT	52	52	
70307130	TEMPORARY PAVEMENT MARKING - LINE 6" - TYPE IV TAPE	FOOT	77	77	
70307140	TEMPORARY PAVEMENT MARKING - LINE 8" - TYPE IV TAPE	FOOT	16	16	
* 78009004	MODIFIED URETHANE PAVEMENT MARKING - LINE 4"	FOOT	1266	1266	
70307160	TEMPORARY PAVEMENT MARKING - LINE 12" - TYPE IV TAPE	FOOT	75	75	
78300202	PAVEMENT MARKING REMOVAL - WATER BLASTING	SQ FT	666	666	
70400100	TEMPORARY CONCRETE BARRIER	FOOT	312	312	
X0300062	GRAFFITI REMOVAL	SQ YD	169	169	
70400200	RELOCATE TEMPORARY CONCRETE BARRIER	FOOT	312	312	
X0327611	REMOVE AND REINSTALL BRICK PAVEMENT	SQ FT	144	144	
70600241	IMPACT ATTENUATORS, TEMPORARY (NON- REDIRECTIVE, NARROW), TEST LEVEL 2	EACH	2	2	
X4400503	COMBINATION CURB AND GUTTER REMOVAL AND REPLACEMENT GREATER THAN 10 FEET	FOOT	256	256	
70600341	IMPACT ATTENUATORS, RELOCATE (NON- REDIRECTIVE, NARROW), TEST LEVEL 2	EACH	2	2	
X5030250	BRIDGE DECK GROOVING (LONGITUDINAL)	SQ YD	657	657	
78004620	PREFORMED PLASTIC PAVEMENT MARKING, TYPE D - LINE 4'	FOOT	148	148	
X5537800	STORM SEWERS TO BE CLEANED 12"	FOOT	120		120
78009024	MODIFIED URETHANE PAVEMENT MARKING - 24"	FOOT	100	100	
X6700407	ENGINEER'S FIELD OFFICE, TYPE A (D1)	CAL MO	6	6	
78011025	GROOVING FOR RECESSED PAVEMENT MARKING - 5"	FOOT	148	148	
X7010216	TRAFFIC CONTROL AND PROTECTION, (SPECIAL)	L SUM	1	1	
Z0001700	APPROACH SLAB REPAIR (FULL DEPTH)	SQ YD	5	5	
Z0001800	APPROACH SLAB REPAIR (PARTIAL DEPTH)	SQ YD	30	30	
Z0006016	BRIDGE DECK LATEX CONCRETE OVERLAY, 2 3/4 INCHES	SQ YD	654	654	
Z0012130	BRIDGE DECK SCARIFICATION 3/4"	SQ YD	656	656	
Z0012754	STRUCTURAL REPAIR OF CONCRETE (DEPTH EQUAL TO OR LESS THAN 5 INCHES)	SQ FT	187	187	
Z0012755	STRUCTURAL REPAIR OF CONCRETE (DEPTH GREATER THAN 5 INCHES)	SQ FT	6	6	
Z0015550	DEBRIS REMOVAL (BRIDGE)	CU YD	20	20	
Z0016002	DECK SLAB REPAIR (FULL DEPTH, TYPE II)	SQ YD	1.5	1.5	
Z0018500	DRAINAGE STRUCTURES TO BE CLEANED	EACH	4		4
Z0029090	DIAMOND GRINDING (BRIDGE SECTION)	SQ YD	657	657	
X7200061	TEMPORARY INFORMATION SIGNING	SQ FT	57	57	
Z0041895	POLYMER CONCRETE	CU FT	3.9	3.9	
Z0073200	TEMPORARY SHORING AND CRIBBING	EACH	1	1	

REVISED SHEET 9/9/2025

<div></div> <div>INFRASTRUCTURE ENGINEERING INCORPORATED</div> <div>1 South Wacker Suite 2650 Chicago, IL 60606 P 312.425.9560 F 312.425.9564 www.infrastructure-eng.com</div>	USER NAME = ALane	DESIGNED - HA	REVISED -	<div>STATE OF ILLINOIS</div> <div>DEPARTMENT OF TRANSPORTATION</div>	<div>SUMMARY OF QUANTITIES</div> <div>FOSTER AVENUE OVER NORTH SHORE CHANNEL</div>				F.A.U. RTE.	SECTION	COUNTY	TOTAL SHEETS	SHEET NO.
		DRAWN - HA	REVISED -						1360	(21B-NRM-4) BR 25	COOK	36	3
		CHECKED - ACL	REVISED -						CONTRACT NO. 62Y12				
	PLOT DATE = 6/20/2025	DATE - 06/13/2025	REVISED -						ILLINOIS FED. AID PROJECT				
	SCALE: NTS		SHEET 1 OF 1 SHEETS						STA. TO STA.				

MAINTENANCE OF TRAFFIC GENERAL NOTES

- ALL MAINTENANCE OF TRAFFIC (MOT) LANE CLOSURES CAN BE COMPLETED WITH IDOT HIGHWAY STANDARDS. THE MOT PLANS SHALL SERVE AS A GUIDE FOR SAFE DIVERSION OF TRAFFIC DURING EXECUTION OF THIS CONTRACT. HOWEVER, THE CONTRACTOR MAY IMPROVE OR MODIFY THE MOT PLANS TO MEET CONSTRUCTION NEEDS BUT NOT AT THE EXPENSE OF PUBLIC SAFETY OR CONVENIENCE. ANY CHANGES TO THE MOT PLANS SHALL BE SUBMITTED TO THE ENGINEER FOR APPROVAL.
- THE CONTRACTOR SHALL CONTACT KALPANA KANNAN-HOSADURGA, THE IDOT DISTRICT 1 ARTERIAL TRAFFIC CONTROL SUPERVISOR, AT KALPANA.KANNAN-HOSADURGA@ILLINOIS.GOV A MINIMUM OF 72 HOURS IN ADVANCE OF BEGINNING WORK.
- CHANGEABLE MESSAGE SIGNS SHALL BE INSTALLED TWO WEEKS PRIOR TO ALL ROAD CLOSURE, TRAFFIC STAGE CHANGES TO WARN MOTORISTS OF THE UPCOMING EVENT. THE SIGNS SHALL BE REMOVED TWO WEEKS THEREAFTER UNLESS THE SIGNS ARE NEEDED AGAIN FOR A SUBSEQUENT FUTURE EVENT THAT WILL OCCUR WITHIN 2 WEEKS ON THE SAME APPROACH OF THE EFFECTED ROADWAY. THE SIGN LOCATIONS SHALL BE PLACED AS DIRECTED BY THE ENGINEER.
- ALL EXISTING PAVEMENT MARKINGS IN CONFLICT WITH THE PAVEMENT MARKING TAPE USED FOR STAGING SHALL BE REMOVED. THIS WORK SHALL BE PAID FOR AS "PAVEMENT MARKING REMOVAL-WATER BLASTING".
- CONTRACTOR MUST CONTACT CTA WITHIN A MINIMUM OF THREE WEEKS PRIOR TO ANY LANE OR STREET CLOSURES TO DISCUSS ANY IMPACTS TO BUS OPERATIONS, I.E. DETOURS, TEMPORARY BUS STOP RELOCATIONS OR ELIMINATIONS. TWO OR MORE CONSECUTIVE BUS STOP MAY NOT BE CLOSED AT THE SAME TIME. PLEASE CONTACT TRAFFIC.PLANNING@TRANSITCHICAGO.COM TO COORDINATE ANY BUS SERVICE ISSUES.

CONSTRUCTION STAGING

STAGE 1

CONSTRUCTION:

- COMPLETE BRIDGE DECK REPAIRS AND OVERLAY ON THE THRU LANE AND SHOULDER OF FOSTER AVENUE EASTBOUND.

MAINTENANCE OF TRAFFIC:

- CLOSE THE THRU LANE AND SHOULDER OF FOSTER AVENUE EASTBOUND. 2 LANES OF TRAFFIC AND DRIVEWAY ACCESS SHALL BE MAINTAINED.

STAGE 2

CONSTRUCTION:

- COMPLETE BRIDGE DECK REPAIRS AND OVERLAY ON THE THRU LANE AND SHOULDER OF FOSTER AVENUE WESTBOUND.

MAINTENANCE OF TRAFFIC:

- CLOSE THE THRU LANE AND SHOULDER OF FOSTER AVENUE WESTBOUND. 2 LANES OF TRAFFIC AND DRIVEWAY ACCESS SHALL BE MAINTAINED.

WORK ZONE SPEED LIMIT:

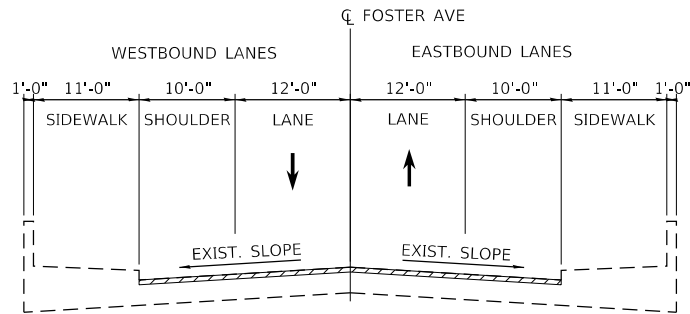
	WORK ZONE SPEED	POSTED SPEED
STAGE 1 & 2	30 MPH	30 MPH

MOT TYPICAL LEGEND

- TEMPORARY CONCRETE BARRIER WITH TYPE C BI-DIRECTIONAL CRYSTAL REFLECTORS PER STD 704001 AND 782006.
- WORK AREA
- DIRECTION OF TRAVEL
- TEMPORARY PAVEMENT MARKING TAPE, TYPE IV 4" (DOUBLE YELLOW) @ 8" C-C
 - TEMPORARY PAVEMENT MARKING, PAINT 6" (WHITE) - TO BE PLACED AT THE BOTTOM OF THE TEMPORARY CONCRETE BARRIER
 - BI-DIRECTIONAL CRYSTAL, TYPE C REFLECTORS

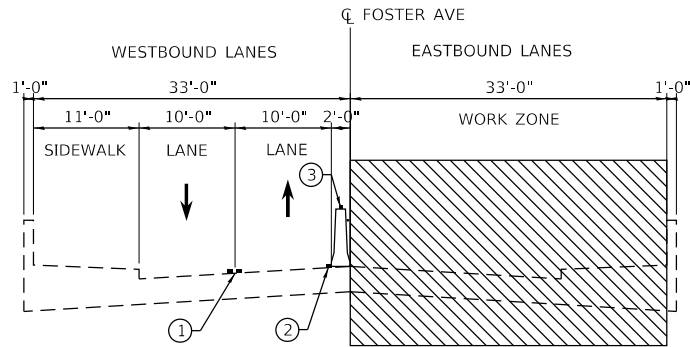
LEGEND

- BRIDGE DECK LATEX CONCRETE OVERLAY, 2 3/4" WITH 1/4" GRINDING
- BRIDGE DECK SCARIFICATION, 3/4"



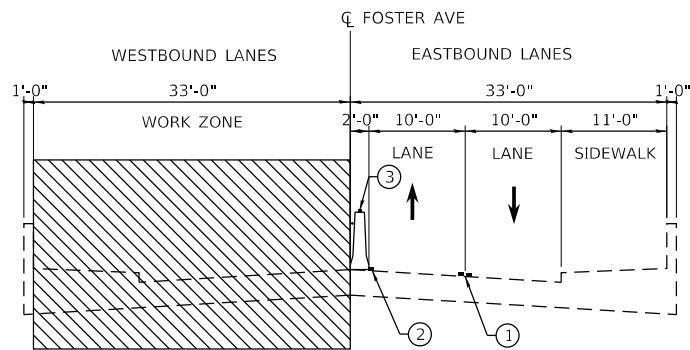
EXISTING TYPICAL CROSS SECTION

ON SN 016-0251



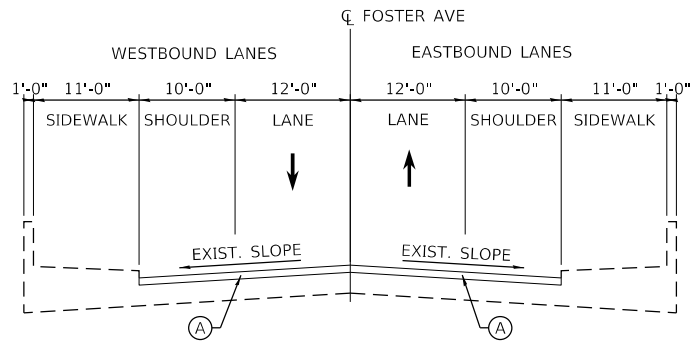
STAGE 1 CONSTRUCTION

ON SN 016-0251



STAGE 2 CONSTRUCTION

ON SN 016-0251



PROPOSED TYPICAL CROSS SECTION

ON SN 016-0251

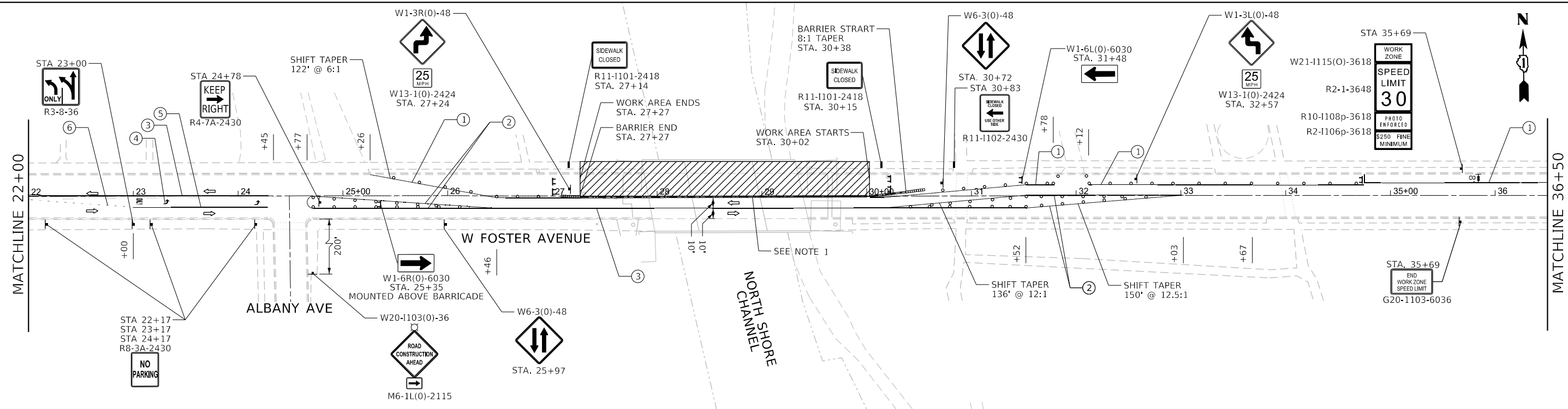
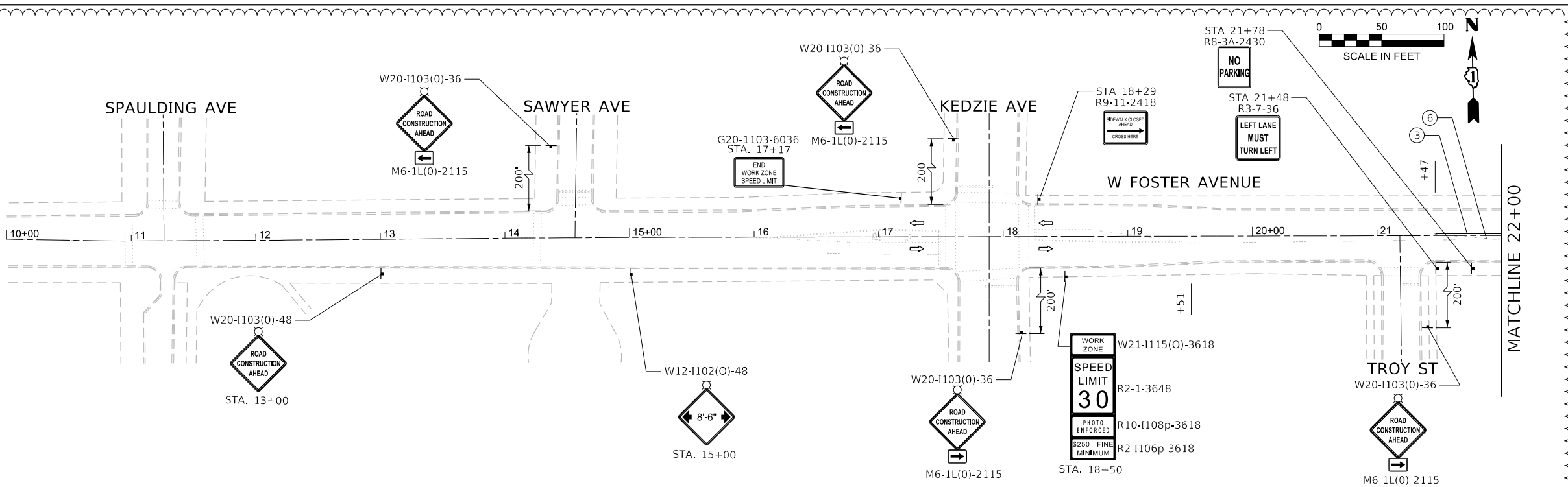
REVISED SHEET 9/9/2025

MODEL: Default
FILE NAME: P:\P-22-22-4675-00 IDOT Various Phase 2 (PTB 208-02)\WO 31 62Y12\GNICADD_Sheets\62Y12-SHT-T-TYPICAL.dgn

<div></div> <div>INFRASTRUCTURE ENGINEERING INCORPORATED 1 South Wacker Suite 2650 Chicago, IL 60606 P 312.425.9569 F 312.425.9564 www.infrastructure-eng.com</div>	USER NAME = A Tverdokhle	DESIGNED - HA	REVISED -  AMT 8/20/25	<div>STATE OF ILLINOIS DEPARTMENT OF TRANSPORTATION</div>	<div>TYPICAL SECTIONS FOSTER AVENUE OVER NORTH SHORE CHANNEL</div>			F.A.U. RTE. 1360	SECTION (21B-NRM-4) BR 25	COUNTY COOK	TOTAL SHEETS 36	SHEET NO. 4
	PLOT DATE = 8/20/2025	DATE = 08/19/2025	REVISED -					CONTRACT NO. 62Y12				
					SCALE: NTS	SHEET 1 OF 1 SHEETS	STA. TO STA.	ILLINOIS FED. AID PROJECT				



MODEL: Default
FILE NAME: P:\P-22-22-4675-00 IDOT Various Phase 2 (PTB 2016-02)\WO 31 62Y12\GNCADD_Sheets\62Y12-SHT-MOT-03.dgn

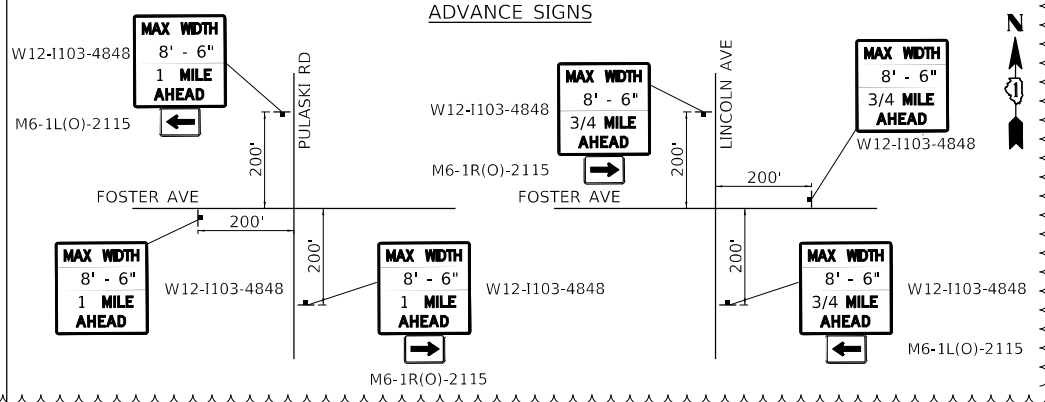


- MOT SYMBOL LEGEND**
- DRUM OR BARRICADE
 - ▨ WORK AREA
 - ⚡ TYPE III BARRICADE WITH FLASHING LIGHTS
 - ⚡ BARRICADE
 - ➡ DIRECTION OF TRAFFIC
 - ⚡ SIGN ON PORTABLE OR PERMANENT SUPPORT
 - ▬ TEMPORARY CONCRETE BARRIER
 - ▬ IMPACT ATTENUATOR NON REDIRECTIVE, NARROW, TEST LEVEL 2
 - ▬ DETECTABLE PEDESTRIAN CHANNELIZING BARRICADE
 - ▬ IDOT STDs 701801 & 701901
 - ▬ PAVEMENT MARKING REMOVAL
 - ▨ TEMPORARY PAVEMENT
 - ➡ FLASHING ARROW BOARD

- MOT PROPOSED LEGEND**
- ① TEMPORARY PAVEMENT MARKING TAPE, TYPE IV 4" (WHITE)
 - ② TEMPORARY PAVEMENT MARKING TAPE, TYPE IV 4" (YELLOW)
 - ③ TEMPORARY PAVEMENT MARKING TAPE, TYPE IV 4" (DOUBLE YELLOW 2 @ 8" C-C)
 - ④ TEMPORARY PAVEMENT MARKING TAPE, TYPE IV (WHITE, LETTERS & SYMBOLS)
 - ⑤ TEMPORARY PAVEMENT MARKING TAPE, TYPE IV 6" (WHITE)
 - ⑥ TEMPORARY PAVEMENT MARKING TAPE, TYPE IV 6" (WHITE, 2' LINE, 6' SPACE)
 - ⑦ TEMPORARY PAVEMENT MARKING TAPE, TYPE IV 8" (WHITE)
 - ⑧ TEMPORARY PAVEMENT MARKING TAPE, TYPE IV 12" (WHITE, DISGONAL @ 6' C-C)

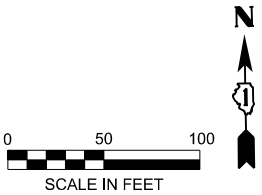
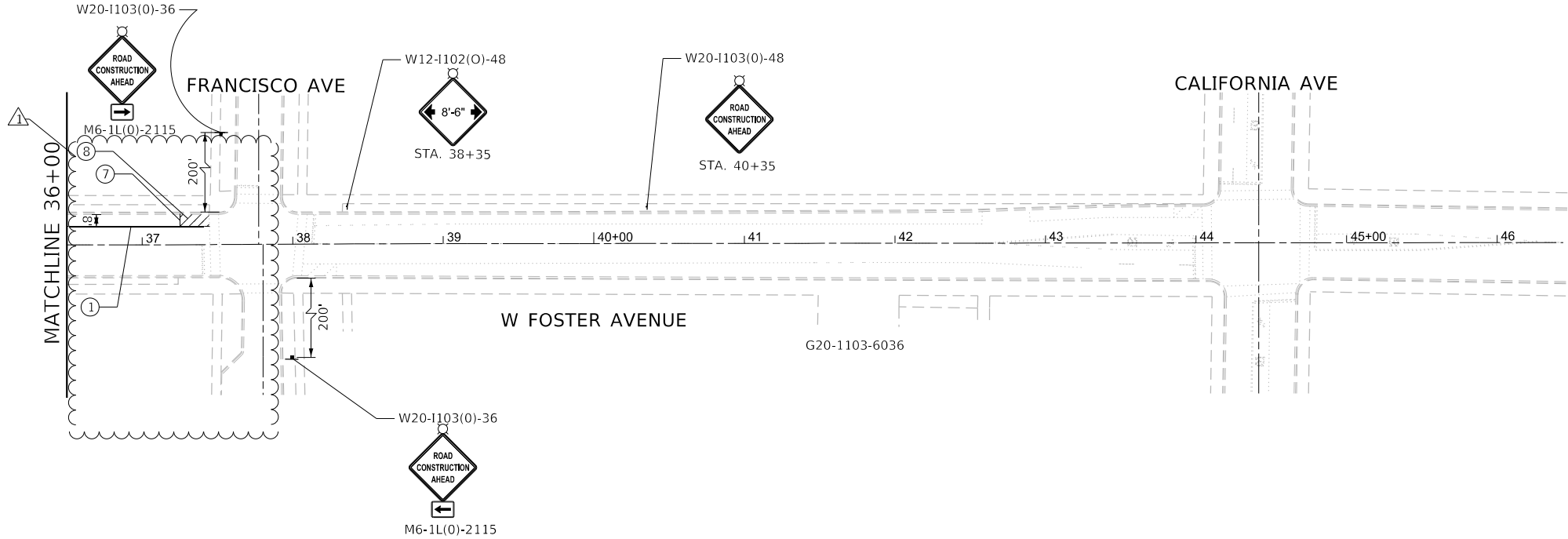
NOTES:
1. PLACE THE PAVEMENT MARKING AT BOTTOM OF TEMPORARY CONCRETE BARRIER WITH 6" WHITE PAINT
2. REMOVE CONFLICTING PAVEMENT MARKING USING PAVEMENT MARKING REMOVAL - WATERBLASTING

REVISED ENTIRE SHEET 9/9/2025



<div></div> <div>INFRASTRUCTURE ENGINEERING INCORPORATED</div> <div>1 South Wacker Suite 2650 Chicago, IL 60606 P 312.425.9568 F 312.425.9569 www.infrastructure-eng.com</div>	USER NAME = ATverdoknieb	DESIGNED - HA	REVISED -  AMT 8/20/25	STATE OF ILLINOIS DEPARTMENT OF TRANSPORTATION	TRAFFIC CONTROL PLANS: STAGE 2 FOSTER AVENUE FROM SPAULDING AVE TO CALIFORNIA AVE				F.A.U. RTE.	SECTION	COUNTY	TOTAL SHEETS	SHEET NO.
		DRAWN - HA	REVISED -						1360	(21B-NRM-4) BR 25	COOK	36	7
		CHECKED - ACL	REVISED -		CONTRACT NO. 62Y12								
	PLOT DATE = 8/20/2025	DATE = 08/19/2025	REVISED -		SCALE: 1"=50'		SHEET 1 OF 2 SHEETS	STA.	TO STA.				
							ILLINOIS FED. AID PROJECT						

MODEL: Default
FILE NAME: P:\P-22\22-4675-00 IDOT Various Phase 2 (PTB 2016-02)\WO 31 62Y12\2D\GNICADD_Sheets\62Y12-SHT-1-MOT-04.dgn



MOT SYMBOL LEGEND

- DRUM OR BARRICADE
- ▨ WORK AREA
- ⚡ TYPE III BARRICADE WITH FLASHING LIGHTS
- ⚡ BARRICADE
- ➡ DIRECTION OF TRAFFIC
- ⚡ SIGN ON PORTABLE OR PERMANENT SUPPORT
- ▬ TEMPORARY CONCRETE BARRIER
- ▬ IMPACT ATTENUATOR NON REDIRECTIVE, NARROW, TEST LEVEL 2
- ▬ DETECTABLE PEDESTRIAN CHANNELIZING BARRICADE
- ▬ IDOT STDS 701801 & 701901
- ▬ PAVEMENT MARKING REMOVAL
- ▨ TEMPORARY PAVEMENT
- ➡ FLASHING ARROW BOARD

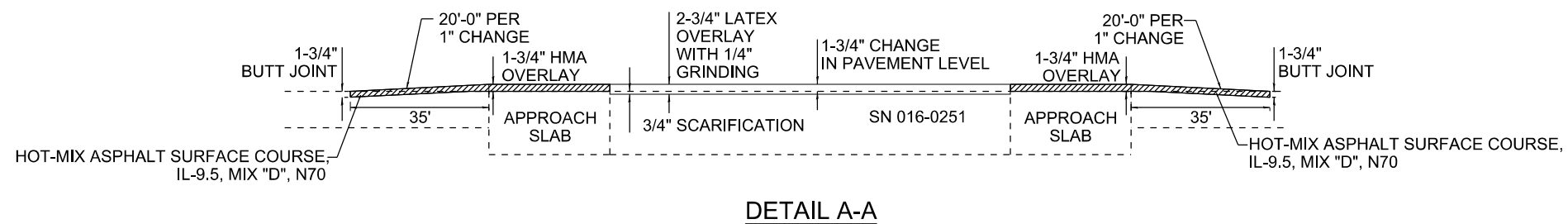
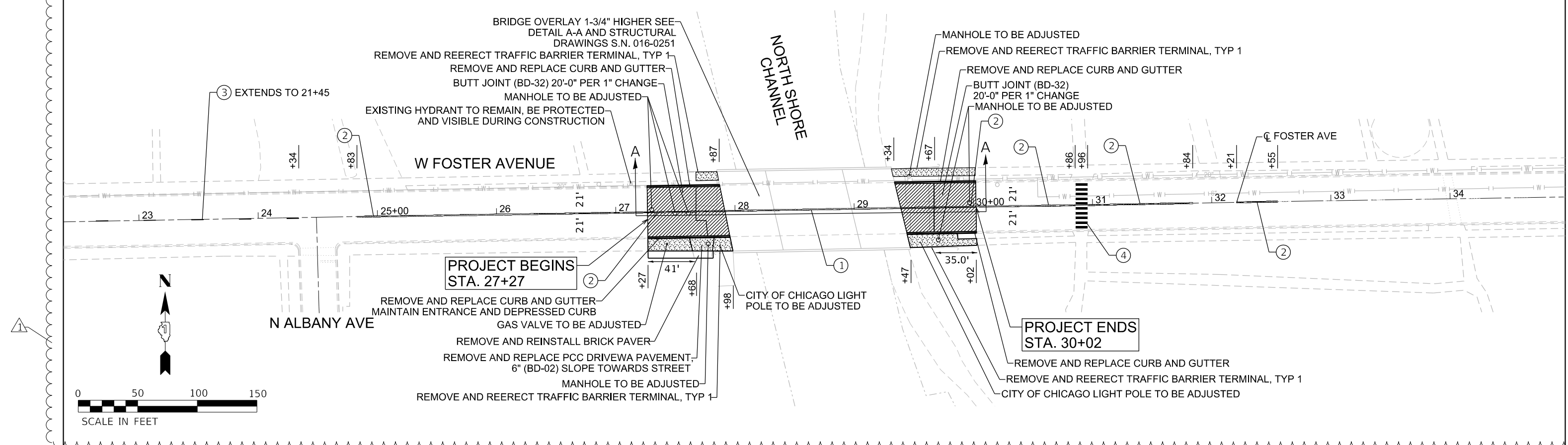
MOT PROPOSED LEGEND

- ① TEMPORARY PAVEMENT MARKING TAPE, TYPE IV 4" (WHITE)
- ② TEMPORARY PAVEMENT MARKING TAPE, TYPE IV 4" (YELLOW)
- ③ TEMPORARY PAVEMENT MARKING TAPE, TYPE IV 4" (DOUBLE YELLOW 2 @ 8" C-C)
- ④ TEMPORARY PAVEMENT MARKING TAPE, TYPE IV (WHITE, LETTERS & SYMBOLS)
- ⑤ TEMPORARY PAVEMENT MARKING TAPE, TYPE IV 6" (WHITE)
- ⑥ TEMPORARY PAVEMENT MARKING TAPE, TYPE IV 6" (WHITE, 2' LINE, 6' SPACE)
- ⑦ TEMPORARY PAVEMENT MARKING TAPE, TYPE IV 8" (WHITE)
- ⑧ TEMPORARY PAVEMENT MARKING TAPE, TYPE IV 12" (WHITE, DISGONAL @ 6' C-C)


NOTES:
1. PLACE THE PAVEMENT MARKING AT BOTTOM OF TEMPORARY CONCRETE BARRIER WITH 6" WHITE PAINT
2. REMOVE CONFLICTING PAVEMENT MARKING USING PAVEMENT MARKING REMOVAL - WATERBLASTING


REVISED SHEET 9/9/2025

 <div>INFRASTRUCTURE ENGINEERING INCORPORATED 1 South Wacker Suite 2650 Chicago, IL 60606 P 312.425.9569 F 312.425.9568 www.infrastructure-eng.com</div>	USER NAME = ATverdokhleb		DESIGNED - HA	REVISED -  AMT 8/20/25	<div>STATE OF ILLINOIS DEPARTMENT OF TRANSPORTATION</div>	TRAFFIC CONTROL PLANS: STAGE 2 FOSTER AVENUE FROM SPAULDING AVE TO CALIFORNIA AVE				F.A.U. RTE.	SECTION	COUNTY	TOTAL SHEETS	SHEET NO.
			DRAWN - HA	REVISED -						1360	(21B-NRM-4) BR 25	COOK	36	8
			CHECKED - ACL	REVISED -		CONTRACT NO. 62Y12				ILLINOIS FED. AID PROJECT				
	PLOT DATE = 8/20/2025		DATE - 08/19/2025	REVISED -		SCALE: 1"=50'		SHEET 2 OF 2 SHEETS	STA.	TO STA.				

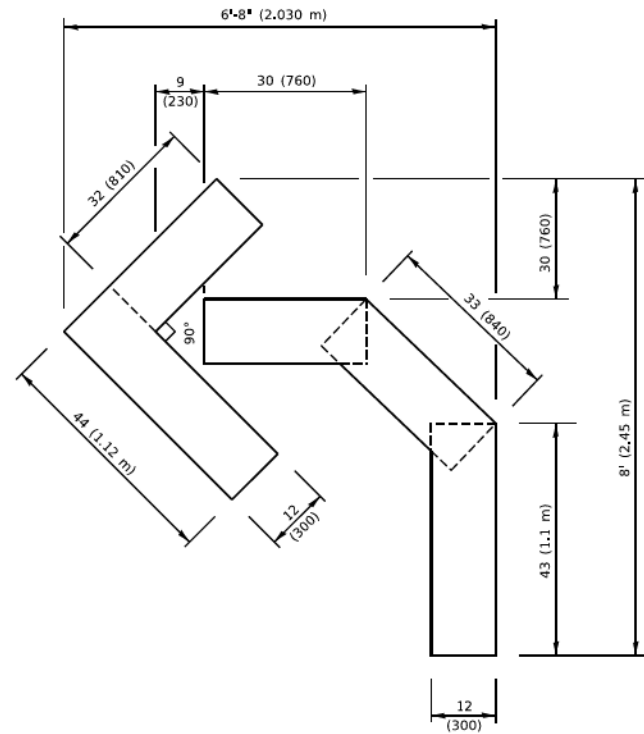


- ① LINE 4", DOUBLE SOLID YELLOW, 2 @ 8' C-C - (TYP)
PREFORMED PLASTIC PAVEMENT MARKING, TYPE D (GROOVED)
- ② LINE 4", DOUBLE SOLID YELLOW, 2 @ 8' C-C - (TYP)
MODIFIED URETHANE
- ③ LINE 4", YELLOW SKIP-DASH, 6' LINE WITH 18' SPACE
MODIFIED URETHANE
- ④ LINE 24", 10' WHITE CONTINENTAL CROSSWALK WITH 2' SPACING
MODIFIED URETHANE

 HOT-MIX ASPHALT SURFACE COURSE, MIX "D", IL-9.5, N70, 1-3/4"

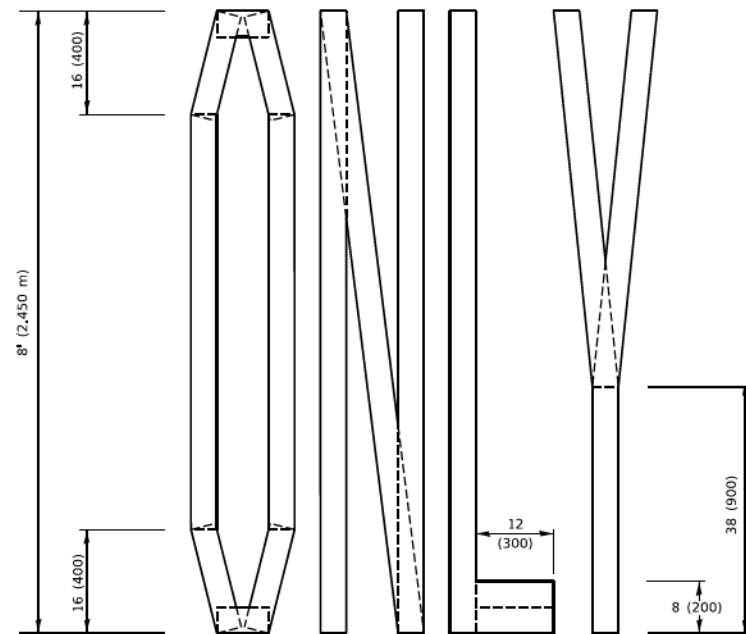
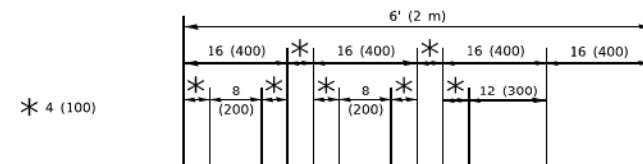
 REMOVE AND REPLACE SIDEWALK

1. THE CONTRACTOR SHALL MILL FIRST THEN PATCH
2. THE LONGITUDINAL JOINT SEALANT SHALL BE PLACED OVER THE MILLED SURFACE.
3. ALL FINAL PAVEMENT MARKINGS SHALL BE MODIFIED URETHANE ON HMA PAVEMENT & PREFORMED PLASTIC ON PCC PAVEMENTS.
4. ALL FINAL PAVEMENT MARKINGS SHALL BE PLACED IN ACCORDANCE WITH TC-24 "DISTRICT ONE TYPICAL PAVEMENT MARKINGS" STANDARD DETAIL.
5. EXISTING HYDRANT TO REMAIN, BE PROTECTED AND VISIBLE DURING CONSTRUCTION.



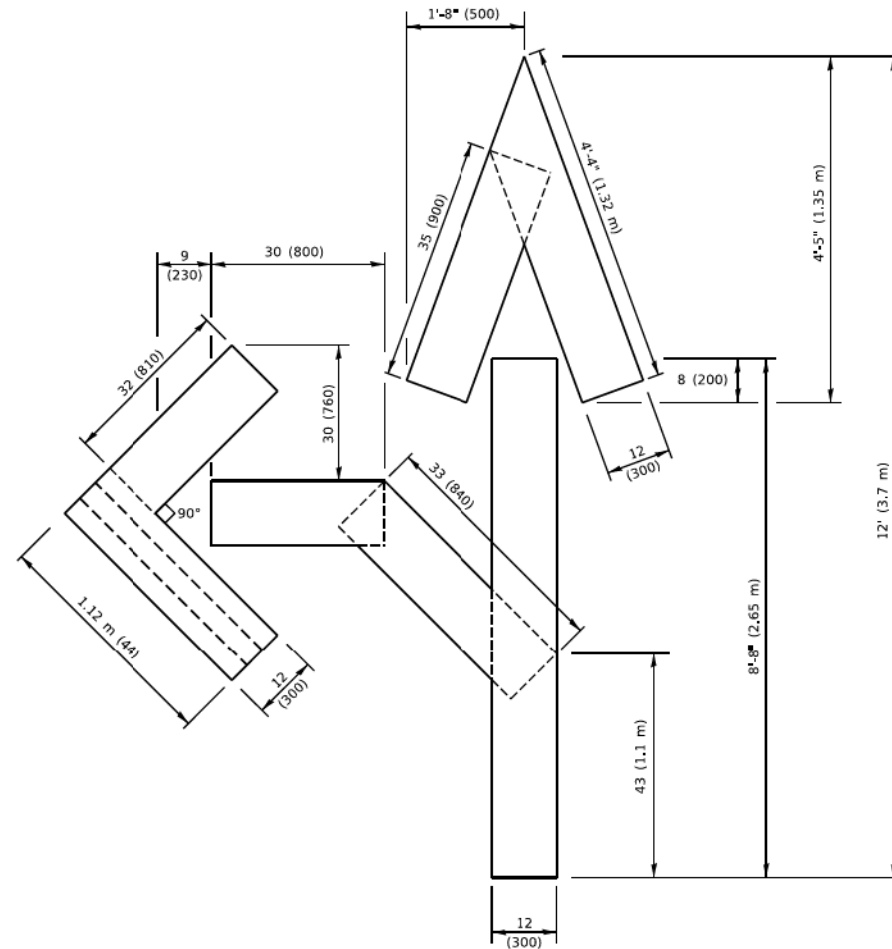
QUANTITY

4 (100) LINE = 45.5 ft. (13.9 m)
15.2 sq. ft. (1.41 sq. m)



QUANTITY

4 (100) LINE = 64.1 ft. (19.5 m)
21.4 sq. ft. (1.99 sq. m)

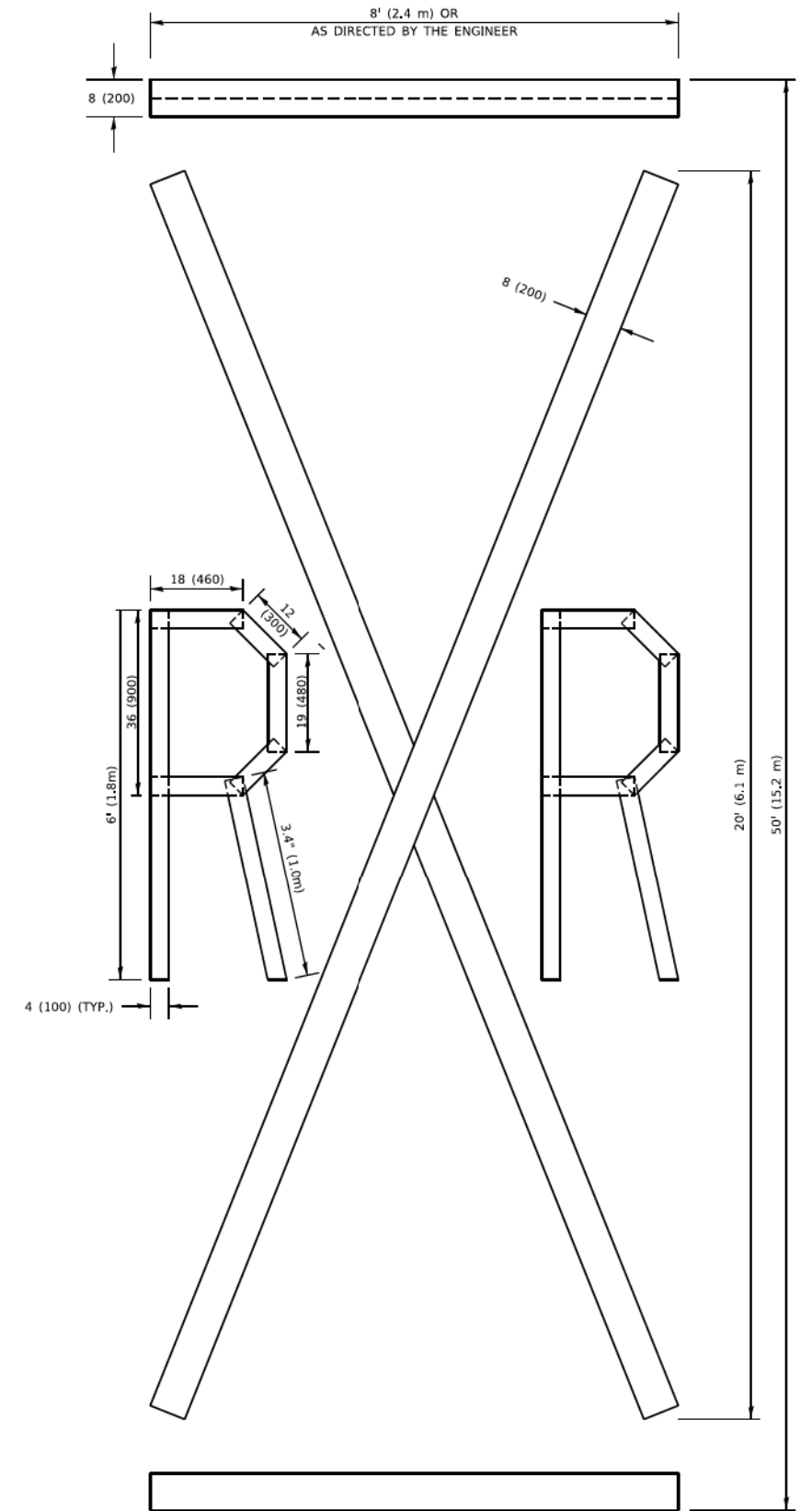


QUANTITY

4 (100) LINE = 82.5 ft. (25.1 m)
27.5 sq. ft. (2.53 sq. m)

NOTE:

ALL QUANTITIES OF PLACEMENT ARE REPRESENTED IN LINEAR FEET OF 4" LINES TO MATCH THE 4" TEMPORARY TAPE PAY ITEM AND REPRESENTS THE TOTAL QUANTITY OF 4" TAPE REQUIRED.



QUANTITY

4 (100) LINE = 225.9 ft. (68.9 m)
75.3 sq. ft. (6.99 sq. m)

All dimensions are in inches (millimeters) unless otherwise shown.

1 REVISED ENTIRE SHEET 9/9/2025

STATE OF ILLINOIS
DEPARTMENT OF TRANSPORTATION

SHORT TERM PAVEMENT MARKING LETTERS AND SYMBOLS

SCALE: NONE SHEET 1 OF 1 SHEETS STA. TO STA.

F. A. U. RTE.	SECTION	COUNTY	TOTAL SHEETS	SHEET NO.
1360	(21B-NRM-4) BR 25	COOK	36	31A
TC-16		CONTRACT NO. 62Y12		
		ILLINOIS	FED. AID PROJECT	