

09-19-2025 LETTING ITEM 040

STATE OF ILLINOIS
DEPARTMENT OF TRANSPORTATION

F.A.I. RTE.	SECTION	COUNTY	TOTAL SHEETS	SHEET NO.
74	72(7-9)L	PEORIA	34*	1
ILLINOIS		CONTRACT NO. 68K24		

* 34 + 2 = 36 TOTAL SHEETS

D-94-059-25

INDEX OF SHEETS:
SEE SHEET 2 FOR INDEX OF SHEETS

PROPOSED
HIGHWAY PLANS

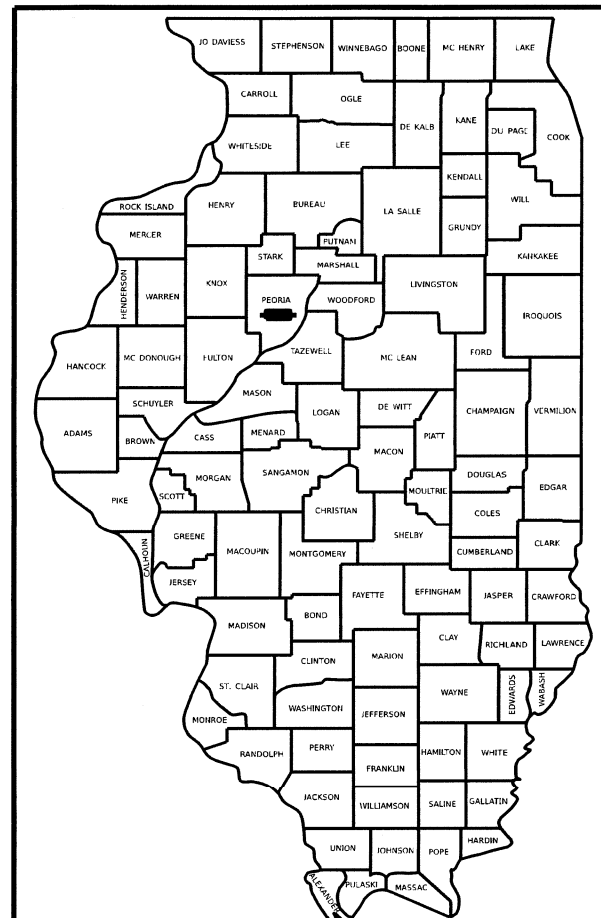
FAI ROUTE 74 (I-74)
SECTION 72(7-9)L
PROJECT NO. CAR-D24G(394)
PEORIA COUNTY
C-94-073-25

HIGHWAY STANDARDS:
SEE SHEET 2 FOR A LIST OF
APPLICABLE HIGHWAY STANDARDS

PROJECT DESCRIPTION:
UPGRADE HPS TO LED LUMINAIRES IN
PEORIA ALONG I-74 ON EXISTING LIGHT
TOWERS, LIGHT POLES, HIGH MAST
TOWERS, AND INSIDE TUNNELS FROM
STERLING AVE. TO ILLINOIS RIVER

J.U.L.I.E.
JOINT UTILITY LOCATION INFORMATION FOR EXCAVATORS
1-800-892-0123
OR 811

PROJECT ENGINEER : ERIC HOWALD (309) 671-4481
PROJECT MANAGER : BEN TELLEFSON (309) 671-4477
CATALOG NO. 036662-00D
CONTRACT NO. 68K24



LOCATION OF SECTION INDICATED THUS: 

STATE OF ILLINOIS
DEPARTMENT OF TRANSPORTATION

SUBMITTED June 27, 2025
Eric Howald
REGIONAL ENGINEER
August 15, 2025
Eric Howald
ENGINEER OF DESIGN AND ENVIRONMENT
August 15, 2025
Eric Howald
DIRECTOR OF HIGHWAYS PROJECT IMPLEMENTATION

PRINTED BY THE AUTHORITY OF
THE STATE OF ILLINOIS

INDEX OF SHEETS	
SHEET NO.	DESCRIPTION
1	COVER SHEET
2	COMMITMENTS, INDEX OF SHEETS, HIGHWAY STANDARDS, AND CONSTRUCTION NOTES
3	LIGHTING CONTROLLER LOCATIONS AND LEGEND
4	SUMMARY OF QUANTITIES
5 - 7	LIGHT TOWER AND LUMINAIRE INFORMATION (PEORIA COUNTY)
8	UNDERPASS LUMINAIRE INFORMATION
9 - 10	LIGHT TOWER LUMINAIRE REPLACEMENT I-74 AT STERLING AVE.
11 - 14	LIGHT TOWER LUMINAIRE REPLACEMENT I-74 AT US 150 (WAR MEMORIAL DR.)
15	LIGHT TOWER LUMINAIRE REPLACEMENT I-74 AT FORREST HILL AVE.
16 - 18	LIGHT TOWER LUMINAIRE REPLACEMENT I-74 AT GALE AVE.
19	LIGHT TOWER LUMINAIRE REPLACEMENT I-74 AT NEBRASKA AVE.
20 - 21	LIGHT TOWER LUMINAIRE REPLACEMENT I-74 AT UNIVERSITY ST.
22	LIGHT TOWER LUMINAIRE REPLACEMENT I-74 AT BROADWAY ST., SHERIDAN RD., ELLIS ST.
23	LIGHT TOWER LUMINAIRE REPLACEMENT I-74 AT NORTH ST.
24	LIGHT TOWER LUMINAIRE REPLACEMENT I-74 AT IL 40 (KNOXVILLE AVE.)
25	LIGHT TOWER LUMINAIRE REPLACEMENT I-74 AT GLEN OAK AVE., PERRY AVE.
26	LIGHT TOWER LUMINAIRE REPLACEMENT I-74 AT MONROE ST., MADISON AVE., JEFFERSON ST.
27	LIGHT TOWER LUMINAIRE REPLACEMENT I-74 AT ADAMS ST., WASHINGTON ST.
28-28B	I-74 WB RAMP G4 TUNNEL LUMINAIRE REPLACEMENT
29-32	I-74 WB RAMP G4 TUNNEL EXISTING PLANS (FOR INFORMATION ONLY)
33-34	LUMINAIRE PERFORMANCE TABLE

1

HIGHWAY STANDARDS	
000001-08	STANDARD SYMBOLS, ABBREVIATIONS AND PATTERNS
001006	DECIMAL OF AN INCH & FOOT
701001-02	OFF-ROAD OPERATIONS, 2L, 2W, MORE THAN 15' AWAY
701006-05	OFF-ROAD OPERATIONS, 2L, 2W, 15' TO 24" FROM PAVEMENT EDGE
701101-05	OFF-ROAD OPERATIONS, MULTILANE, 15' TO 24" FROM PAVEMENT EDGE
701106-02	OFF-ROAD OPERATIONS, MULTILANE, MORE THAN 15' AWAY
701400-12	APPROACH TO LANE CLOSURE, FREEWAY/ EXPRESSWAY
701406-13	LANE CLOSURE, FREEWAY/ EXPRESSWAY, DAY OPERATIONS ONLY
701428-01	TRAFFIC CONTROL SETUP AND REMOVAL FREEWAY/ EXPRESSWAY
701456-05	PARTIAL EXIT RAMP CLOSURE, FREEWAY/ EXPRESSWAY
701601-09	URBAN LANE CLOSURE, MULTILANE, 1W OR 2W WITH NONTRAVERSABLE MEDIAN
701901-10	TRAFFIC CONTROL DEVICES
821101-03	LUMINARE WIRING IN POLE
701426-09	LANE CLOSURE, MULTILANE, INTERMITTENT OR MOVING OPERATION, FOR SPEEDS >= 45 MPH
720001-01	SIGN PANEL MOUNTING DETAILS

THERE HAVE BEEN NO COMMITMENTS MADE IN CONJUCTION WITH THIS PROJECT.

CONSTRUCTION NOTES	
1.	ANY MAINTENANCE OF EXISTING LIGHTING WILL BE CONSIDERED EXTRA WORK IN ACCORDANCE WITH ARTICLE 109.04 OF THE STANDARD SPECIFICATIONS.
2.	THE CONTRACTOR SHALL BE RESPONSIBLE FOR LOCATING EXISTING IDOT ELECTRICAL FACILITIES AT HIS/HER OWN EXPENSE IF REQUIRED. THE CONTRACTOR SHALL ALSO BE LIABLE FOR ANY DAMAGE TO IDOT FACILITIES RESULTING FROM INACCURATE LOCATING.
3.	THE CONTRACTOR SHALL VERIFY FIELD CONDITIONS PRIOR TO BIDDING. THERE WILL BE NO ADDITIONAL COMPENSATION PAID FOR CLAIMS THAT ARISE FROM A FAILURE TO FULLY INVESTIGATE EXISTING FIELD CONDITIONS.
4.	ELECTRICAL WORK SHALL CONFORM WITH NATIONAL, STATE, AND LOCAL CODES.
5.	ALL SURPLUS MATERIALS SHALL BE DISPOSED OF IN ACCORDANCE WITH ARTICLE 202.03 OF THE STANDARD SPECIFICATIONS.
6.	REMOVAL OF EXISTING ITEMS WILL NOT BE PAID FOR SEPARATELY, BUT SHALL BE INCLUDED IN THE UNIT BID PRICES FOR THE PROPOSED ITEMS.
7.	ALL HPS LAMPS SHALL BE DISPOSED OF AT A CERTIFIED DISPOSAL FACILITY. ALL COSTS, INCLUDING DISPOSAL AND SHIPPING CHARGES, SHALL BE INCLUDED IN THE COST OF THE PROPOSED PAY ITEMS FOR LUMINAIRE LAMP REPLACEMENT. THE CONTRACTOR SHALL SUBMIT SUPPORTING DOCUMENTATION FOR ALL DISPOSAL ACTIVITIES.
8.	THE CONTRACTOR MAY ELECT TO WORK DURING NON-PEAK HOURS AND WEEKENDS, HOWEVER, ALL COSTS ASSOCIATED WITH WORKING DURING THESE TIME PERIODS SHALL BE INCLUDED IN THE BID PRICES FOR THE PAY ITEMS. THERE WILL BE NO ADDITIONAL COMPENSATION FOR SHIFT DIFFERENTIALS AND PREMIUM TIME HOURS.
9.	PRIOR TO COMMENCING WORK, THE CONTRACTOR SHALL ACQUIRE ALL PERTINENT MANUFACTURER'S OPERATION AND MAINTENANCE MANUALS FOR THE TOWER LOWERING DEVICES AND LUMINAIRES. THE CONTRACTOR SHALL BE FAMILIAR AND KNOWLEDGEABLE IN THE MAINTENANCE AND OPERATION OF THE LIGHTING EQUIPMENT.
10.	THE CONTRACTOR SHALL HAVE ALL REQUIRED EQUIPMENT AND SUFFICIENT SUPPLIES OF ALL REQUIRED MATERIALS AVAILABLE AT THE IMMEDIATE WORK SITE TO MINIMIZE WORK OPERATIONS AND TRAFFIC DISRUPTIONS, INCREASE OPERATIONAL EFFICIENCY, AND PREVENT UNNECESSARY LOWERING OF THE LUMINAIRE RING.
11.	THE LANE CLOSURES FOR WORK ON THE 7 HIGH MAST TOWERS IN THE CENTER MEDIAN ON THE PEORIA SIDE OF THE MURRAY BAKER BRIDGE SHALL BE RESTRICTED TO OFF-PEAK HOURS (8:30AM TO 3:30PM) ON SUNDAY ONLY, SEE TABLE FOR DETAILS.
12.	THE LANE CLOSURES FOR WORK ON THE 7 HIGH MAST TOWERS IN THE CENTER MEDIAN ON THE TAZEWELL SIDE OF THE MURRAY BAKER BRIDGE SHALL BE RESTRICTED TO OFF-PEAK HOURS (8:30AM TO 3:30PM) ON SUNDAY ONLY, SEE TABLE FOR DETAILS.
13.	EXISTING LUMINAIRE WIRING, FUSES, AND FUSE HOLDERS WILL BE REUSED WITH THE PROPOSED HIGH MAST, TUNNEL, UNDERPASS, AND ROADWAY LUMINAIRES. IF THE EXISTING ITEMS ARE DAMAGED, INCOMPATIBLE, OR NOT RE-USABLE, THE CONTRACTOR SHALL FURNISH AND INSTALL NEW ITEMS AS REQUIRED FOR LUMINAIRE INSTALLATION AND AS DIRECTED BY THE ENGINEER. THE CONTRACTOR SHALL FURNISH AND INSTALL ALL ITEMS REQUIRED FOR LUMINAIRE INSTALLATION. ALL MATERIAL SHALL CONFORM TO THE STANDARD SPECIFICATIONS. THE COST OF THIS WORK SHALL BE INCLUDED IN THE COST OF THE PROPOSED LUMINAIRES.
14.	EXISTING LUMINAIRE MOUNTING BRACKETS AND HARDWARE WILL BE REUSED WITH THE PROPOSED HIGH MAST, TUNNEL, UNDERPASS, AND ROADWAY LUMINAIRES. IF THE EXISTING ITEMS ARE DAMAGED, INCOMPATIBLE, OR NOT RE-USABLE, THE CONTRACTOR SHALL FURNISH AND INSTALL NEW ITEMS AS REQUIRED FOR LUMINAIRE INSTALLATION AND AS DIRECTED BY THE ENGINEER. . THE CONTRACTOR SHALL FURNISH AND INSTALL BRACKETS, HARDWARE, AND ALL OTHER ITEMS REQUIRED FOR LUMINAIRE INSTALLATION. ALL BRACKETS AND HARDWARE SHALL BE GALVANIZED STEEL OR STAINLESS STEEL. ALL MATERIAL SHALL CONFORM TO THE STANDARD SPECIFICATIONS. THE COST OF THIS WORK
15.	THE CONTRACTOR SHALL VERIFY EXISTING LUMINAIRE VOLTAGES PRIOR TO ORDERING MATERIAL.

IF THE EXISTING ITEMS ARE DAMAGED, THIS WORK SHALL BE PAID FOR ACCORDING TO ARTICLE 109.04. IF THE EXISTING ITEMS ARE INCOMPATIBLE WITH THE LUMINAIRE SUPPLIED BY THE CONTRACTOR, THE COST OF THIS WORK SHALL BE INCLUDED IN THE COST OF THE LUMINAIRE.

IF THE EXISTING ITEMS ARE DAMAGED, THIS WORK SHALL BE PAID FOR ACCORDING TO ARTICLE 109.04. IF THE EXISTING ITEMS ARE INCOMPATIBLE WITH THE LUMINAIRE SUPPLIED BY THE CONTRACTOR, THE COST OF THIS WORK SHALL BE INCLUDED IN THE COST OF THE LUMINAIRE.

MODEL: 8400LUMINAIRES
FILE: LUMINAIRES.SHEET

USER NAME = \$USERS	DESIGNED -	REVISED -
DRAWN -	REVISD -	
PLOT SCALE = \$SCALE\$	CHECKED -	REVISED -
PLOT DATE = \$DATES	DATE -	REVISED -

STATE OF ILLINOIS
DEPARTMENT OF TRANSPORTATION

COMMITMENTS, INDEX OF SHEETS, HIGHWAY
STANDARDS, AND CONSTRUCTION NOTES

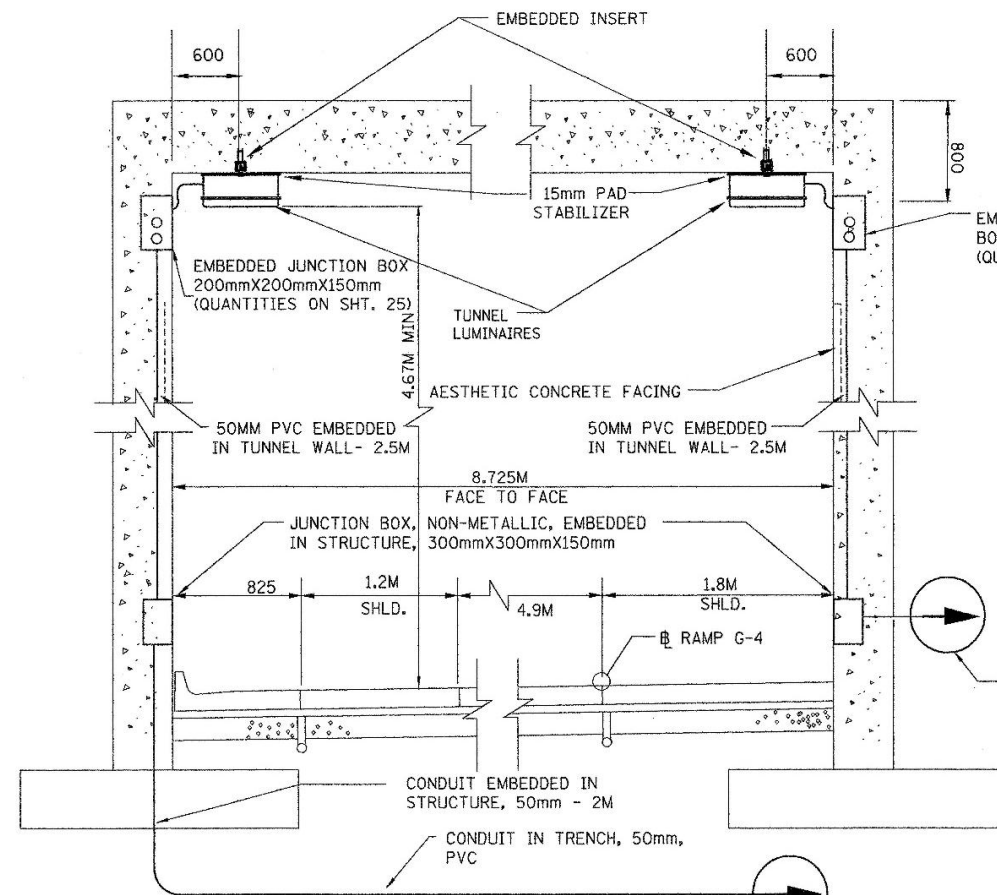
SCALE: SHEET OF SHEETS STA. TO STA.

FILE RTE.	SECTION	COUNTY	TOTAL SHEETS	SHEET NO.
74	72(7-9)L	PEORIA	34	2
CONTRACT NO. 68K24				
ILLINOIS FED. AID PROJECT				

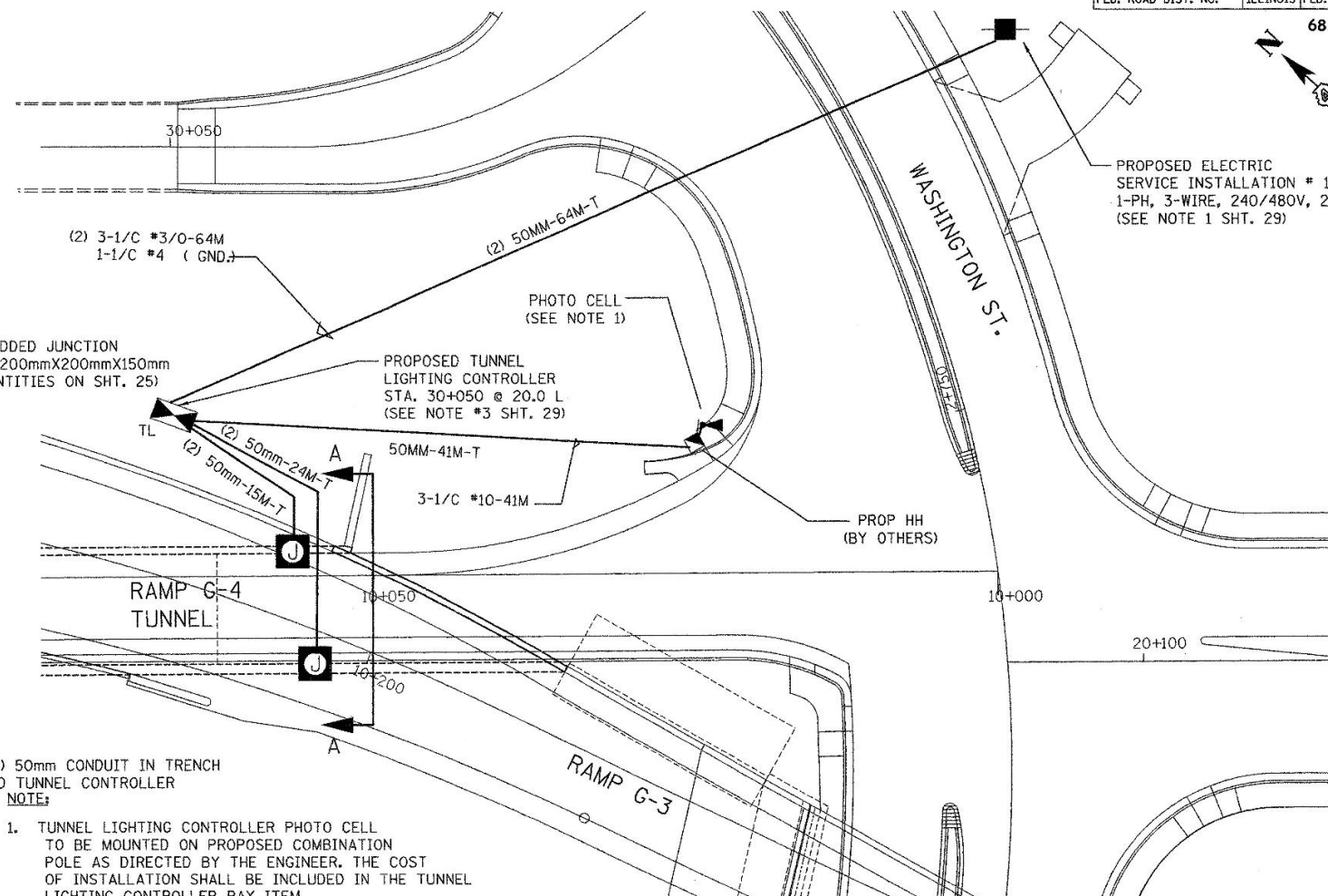
F.A.I. RTE.	SECTION	COUNTY	TOTAL SHEETS	SHEET NO.
74	7219.9-1R-1	PEORIA	1559	1433
STA.		TO STA.		
FED. ROAD DIST. NO.		ILLINOIS FED. AID PROJECT		

68196

PROPOSED ELECTRIC SERVICE INSTALLATION # 1 AND # 2
1-PH, 3-WIRE, 240/480V, 200A
(SEE NOTE 1 SHT. 29)



SECTION A-A
NO SCALE



- NOTE:
1. TUNNEL LIGHTING CONTROLLER PHOTO CELL TO BE MOUNTED ON PROPOSED COMBINATION POLE AS DIRECTED BY THE ENGINEER. THE COST OF INSTALLATION SHALL BE INCLUDED IN THE TUNNEL LIGHTING CONTROLLER PAY ITEM.
 2. ALL MEASUREMENTS ARE IN MILLIMETER UNLESS OTHERWISE NOTED.

STREET LIGHTING - BILL OF MATERIAL - THIS SHEET

PAY ITEM	UNIT	QTY.
ELECTRIC SERVICE INSTALLATION	EACH	2
CONDUIT IN TRENCH, 50MM DIA., PVC	METER	232
CONDUIT EMBEDDED IN STRUCTURE, 50mm DIA., PVC	METER	7
JUNCTION BOX, NON-METALLIC, EMBEDDED IN STRUCTURE, 300mmX300mmX150mm	EACH	2
TRENCH AND BACKFILL FOR ELECTRICAL WORK	METER	120

ELECTRIC CABLE IN CONDUIT, 600V (XLP-TYPE USE) 1/C NO. 10	METER	123
ELECTRIC CABLE IN CONDUIT, 600V (XLP-TYPE USE) 1/C NO. 3/0	METER	384
ELECTRIC CABLE IN CONDUIT, 600V (XLP-TYPE USE) 1/C NO. 4	METER	128
TUNNEL LIGHTING CONTROLLER	EACH	1
CONCRETE FOUNDATION FOR BASE MOUNTED CONTROLLER, SPECIAL	EACH	1

* NEXT SHEET SHALL BE 26A.
LIGHTING SHEET 26 OF 59

REVISIONS	
NAME	DATE

ILLINOIS DEPARTMENT OF TRANSPORTATION
PROPOSED LIGHTING DETAILS
RAMP G-4 TUNNEL

DRAWN BY DJK
CHECKED BY MKR
DATE: 11/03/03

alfred benesch & company
CONSULTING ENGINEERS
205 NORTH MICHIGAN AVENUE, CHICAGO, ILLINOIS 60601

FOR INFORMATION ONLY

USER NAME = \$USERS	DESIGNED -	REVISED -
PLOT SCALE = 1:100	DRAWN -	REVISED -
PLOT DATE =	CHECKED -	REVISED -
	DATE -	REVISED -

STATE OF ILLINOIS
DEPARTMENT OF TRANSPORTATION

I-74 WB RAMP G-4
TUNNEL LUMINAIRE REPLACEMENT

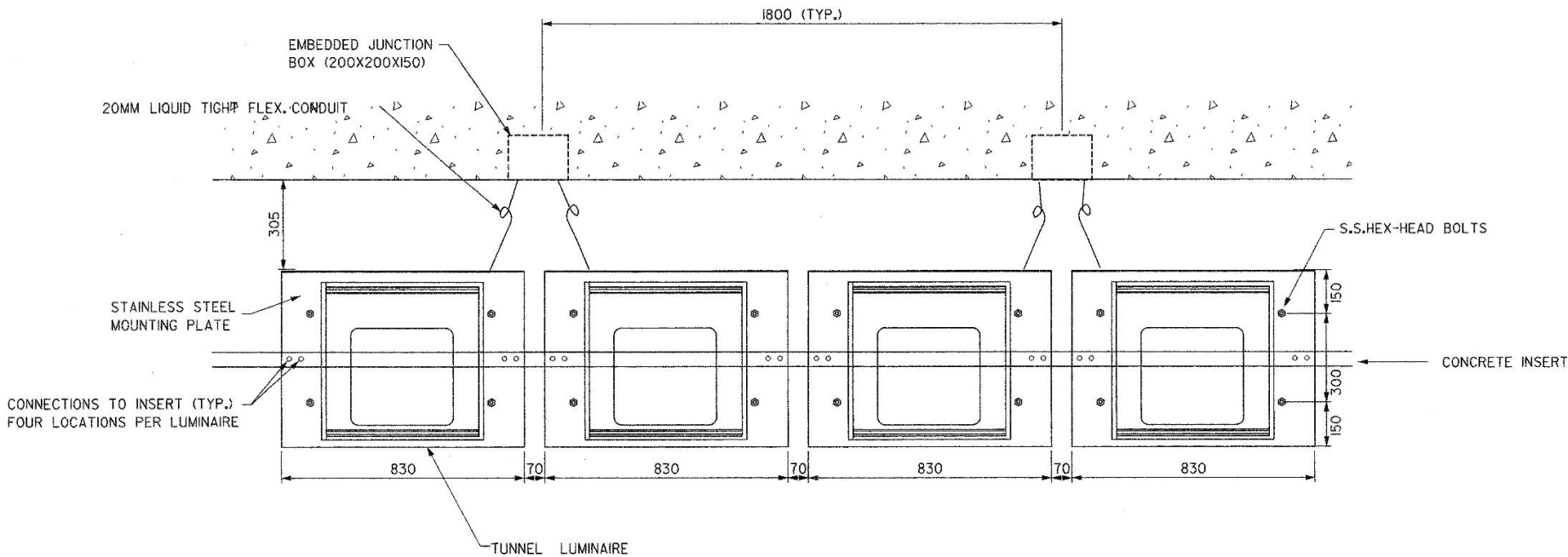
SCALE: SHEET 1 OF 1 SHEETS, STA. TO STA.

F.A.I. RTE.	SECTION	COUNTY	TOTAL SHEETS	SHEET NO.
74	7217-9JL	PEORIA	34	28A
		ILLINOIS CONTRACT NO. 68K24		

ADDED SHEET 9/4/25

F.A.I. RTE.	SECTION	COUNTY	TOTAL SHEETS	SHEET NO.
74	72(9,9-DR-1	PEORIA	1559	1434
STA.		TO STA.		
FED. ROAD DIST. NO.		ILLINOIS	FED. AID PROJECT	

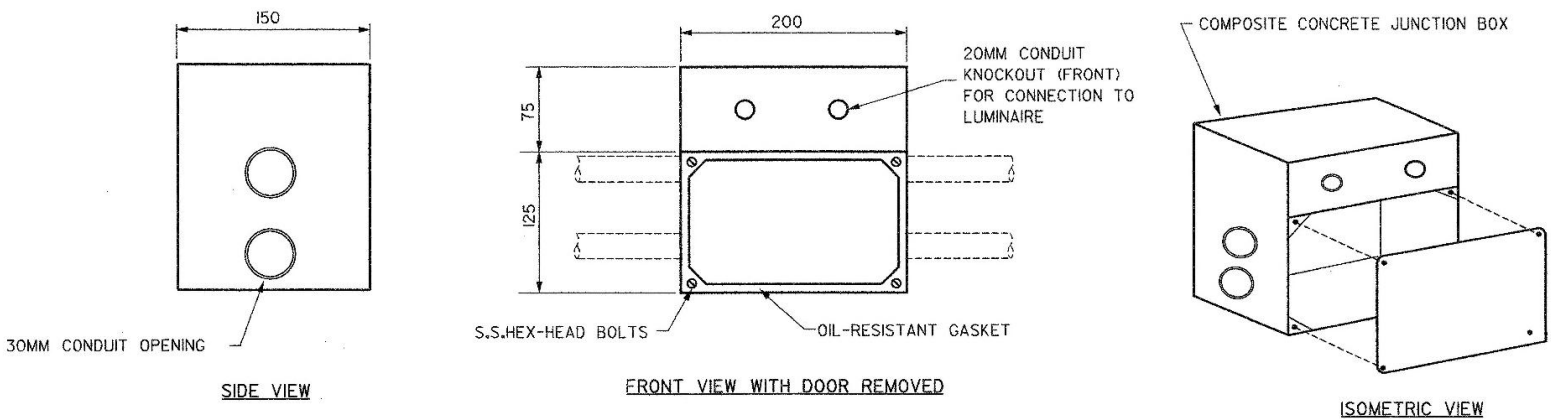
68196



TYPICAL TUNNEL LUMINAIRE INSTALLATION- PLAN VIEW

NOTES:

1. ALL MOUNTING HARDWARE, BOLTS AND NUTS SHALL BE STAINLESS STEEL. ALL NUTS AND BOLTS SHALL BE FACTORY COATED WITH ANTI-SIEZE COMPOUND.
2. ALL DIMENSIONS SHOWN ARE IN MILLIMETER.
3. THE COVER OF THE JUNCTION BOX SHALL BE ARRANGED TO FIT FLUSH WITH THE WALL SURFACE.
4. THE TUNNEL LUMINAIRE, AND MOUNTING PLATE SHALL BE FURNISHED TO THE CONTRACTOR UNDER A SEPARATE CONTRACT.
5. THE COST OF THE CONCRETE INSERT SHALL BE INCLUDED IN THE PAY ITEM FOR TUNNEL LUMINAIRE, (INSTALL ONLY).
6. THE COST OF ATTACHING THE WALL BRACKET TO THE EMBEDDED CONTINUOUS CONCRETE INSERT (INCLUDING ALL NECESSARY HARDWARE, NUTS AND BOLTS) SHALL BE INCLUDED IN THE PAY ITEM FOR TUNNEL LUMINAIRE, (INSTALL ONLY).



NON-METALLIC EMBEDDED JUNCTION BOX (200X200X150)

FOR INFORMATION ONLY

LIGHTING SHEET 26A OF 59

REVISIONS		ILLINOIS DEPARTMENT OF TRANSPORTATION
NAME	DATE	
		PROPOSED TUNNEL LIGHTING RAMP G-4
DATE: 11/03/03		DRAWN BY DJK CHECKED BY MKR

ab alfred benesch & company
CONSULTING ENGINEERS
205 NORTH MICHIGAN AVENUE, CHICAGO, ILLINOIS 60601

USER NAME = \$USERS	DESIGNED -	REVISED -
DRAWN -	REVISED -	
PLOT SCALE = 1:100	CHECKED -	REVISED -
PLOT DATE =	DATE -	REVISED -

STATE OF ILLINOIS
DEPARTMENT OF TRANSPORTATION

I-74 WB RAMP G-4
TUNNEL LUMINAIRE REPLACEMENT

SCALE: SHEET 1 OF 1 SHEETS, STA. TO STA.

F.A.I. RTE.	SECTION	COUNTY	TOTAL SHEETS	SHEET NO.
74	72(7-9)JL	PEORIA	34	28B
ILLINOIS		CONTRACT NO. 68K24		