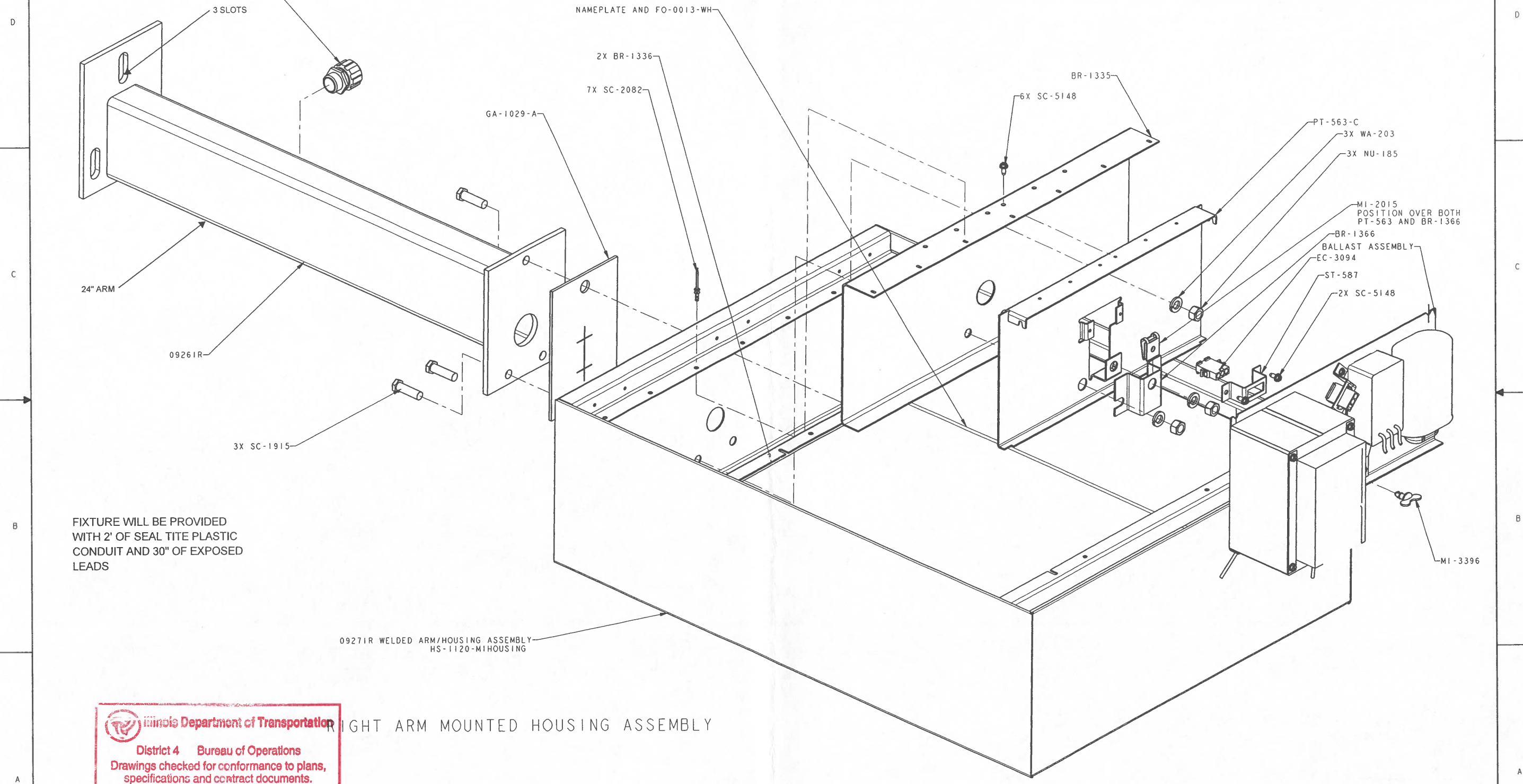


FOR INFORMATION ONLY - TUNNEL LUMINAIRE SHOP DRAWINGS FROM CONTRACT 68198

REVISIONS					
ZONE	REV	DESCRIPTION	PCN	DATE	BY

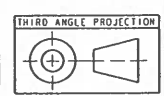


Illinois Department of Transportation
District 4 Bureau of Operations
Drawings checked for conformance to plans, specifications and contract documents.
APPROVED
Date: 4/26/06
By: GAW

RIGHT ARM MOUNTED HOUSING ASSEMBLY

X	X	X	REVISION	REV STATUS
3	2	1	SHEET	OF SHEETS

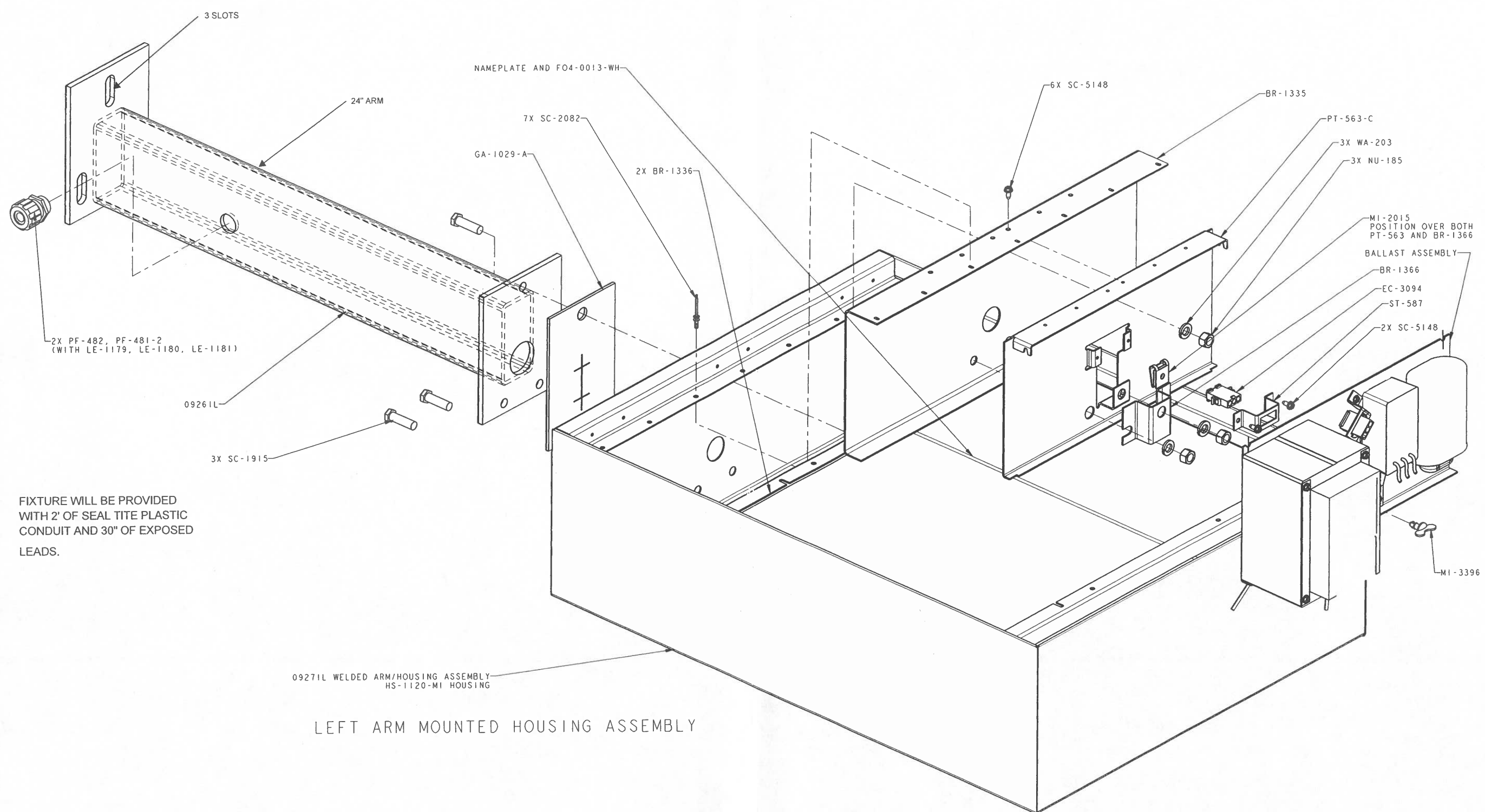
DRAWING PREPARED IN ACCORDANCE WITH ANSI Y14.5M-1982



HOLOPHANE RESEARCH AND DEVELOPMENT CENTER NEWARK, OHIO		UNLESS OTHERWISE SPECIFIED DIMENSIONS ARE IN INCHES. TOLERANCES ARE:		XXX ± .015 XX ± .03 ANG ± 2°
THIS PRINT IS THE CONFIDENTIAL PROPERTY OF HOLOPHANE AND IS LOANED SUBJECT TO RETURN UPON DEMAND AND UPON EXPRESS CONDITION THAT IT WILL NOT BE DISCLOSED TO ANY THIRD PARTY WITHOUT THE PRIOR WRITTEN PERMISSION OF HOLOPHANE OR USED DIRECTLY OR INDIRECTLY IN ANY WAY DETRIMENTAL TO THE INTEREST OF HOLOPHANE		DRW BY: NAR DATE: 2-20-06	TITLE: SS MEDIUM MIRRORSTAR WITH SMST COMPONENTS	
CAD MODEL: MD1978.DRW		ISSUE PCN:	SCALE: 1/2	SHEET 1 OF 2

FOR INFORMATION ONLY - TUNNEL LUMINAIRE SHOP DRAWINGS FROM CONTRACT 68198

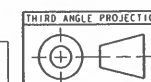
REV		DESCRIPTION	PCN	DATE	BY	CHK



FIXTURE WILL BE PROVIDED
WITH 2' OF SEAL TITE PLASTIC
CONDUIT AND 30" OF EXPOSED
LEADS.

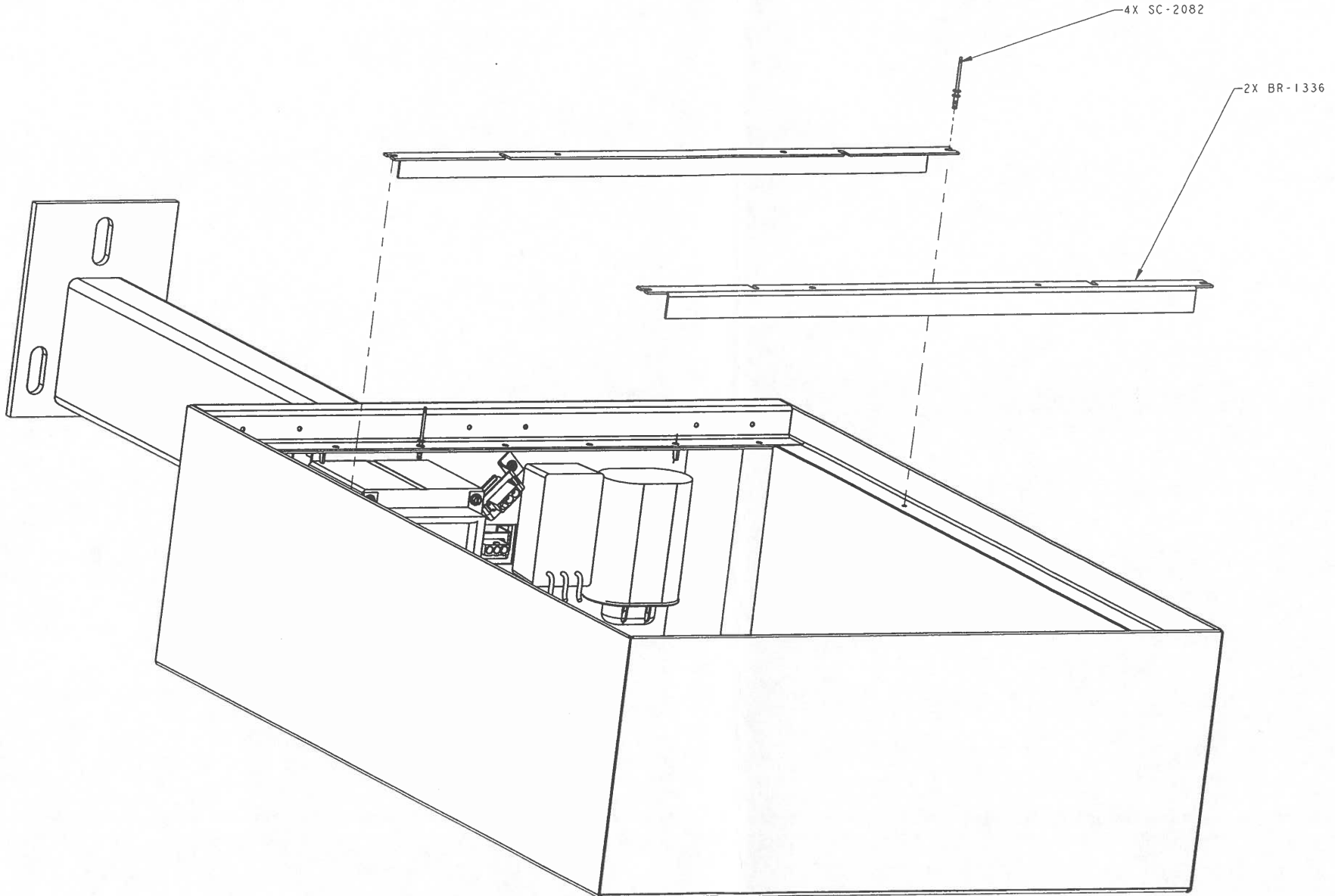
LEFT ARM MOUNTED HOUSING ASSEMBLY

DRAWING PREPARED IN
ACCORDANCE WITH ANSI Y14.5M-1982



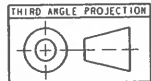
HOLOPHANE RESEARCH AND DEVELOPMENT CENTER NEWARK, OHIO		UNLESS OTHERWISE SPECIFIED DIMENSIONS ARE IN INCHES. TOLERANCES ARE:		.XXX±.015 .XX±.03 ANG ± 2°	
THIS PRINT IS THE CONFIDENTIAL PROPERTY OF HOLOPHANE AND IS LOANED SUBJECT TO RETURN UPON DEMAND AND UPON EXPRESS CONDITION THAT IT WILL NOT BE DISCLOSED TO ANY THIRD PARTY WITHOUT THE PRIOR WRITTEN PERMISSION OF HOLOPHANE OR USED DIRECTLY OR INDIRECTLY IN ANY WAY DETRIMENTAL TO THE INTEREST OF HOLOPHANE	DRN BY: MAR ENGR: MAR CHK: APVD BY:	DATE: 2-20-06 DATE: 2-20-06	TITLE SS MEDIUM NARROWSTAR WITH SMT COMPONENTS	SIZE D FSCN NO DWG NO MD-1978	SHEET 2
CAD MODEL: MD1978.DRW		ISSUE PCN:		SCALE 1/2	REV

FOR INFORMATION ONLY - TUNNEL LUMINAIRE SHOP DRAWINGS FROM CONTRACT 68198



SCALE 1/2

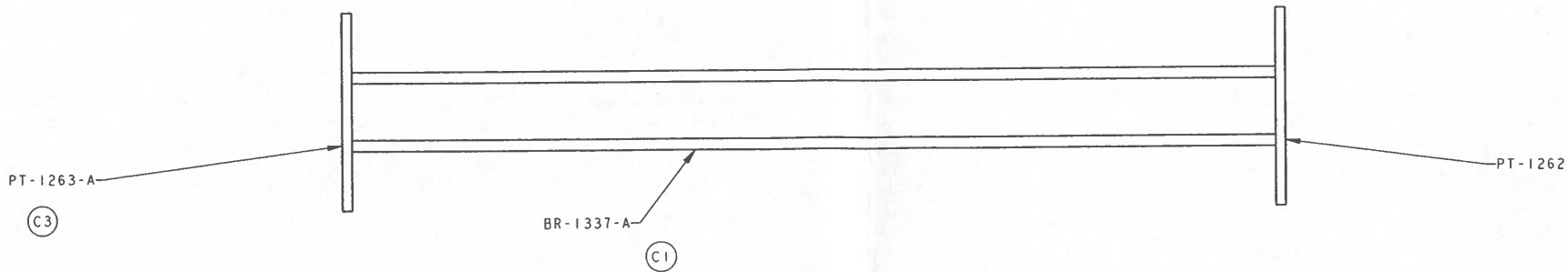
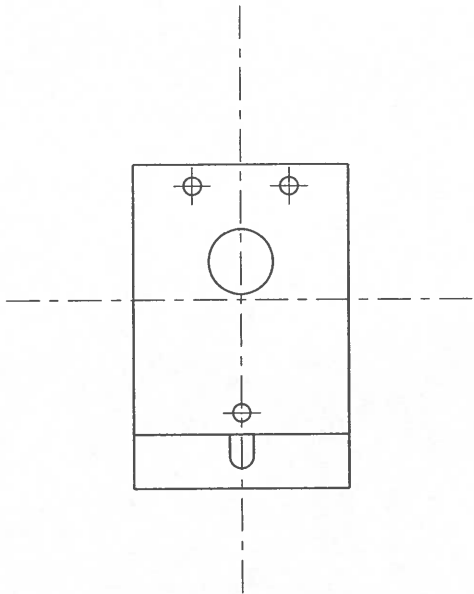
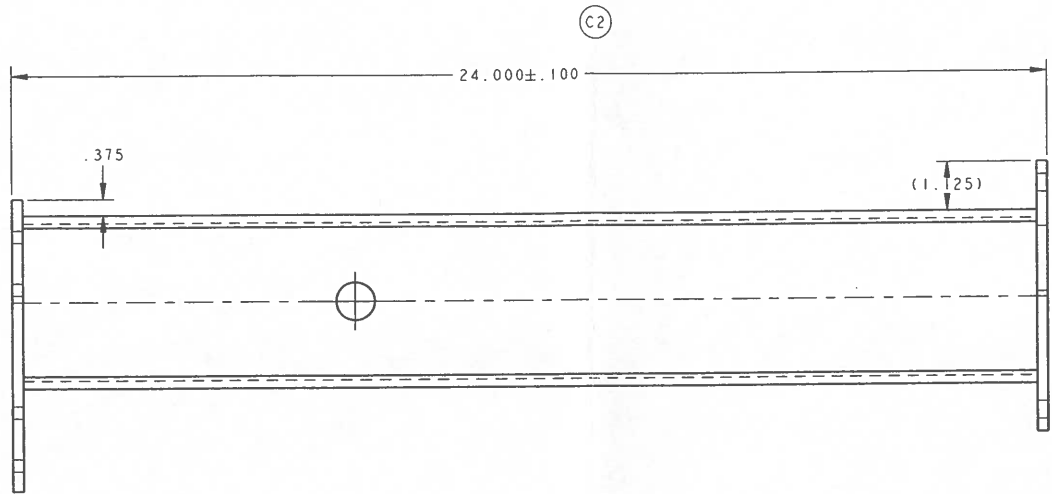
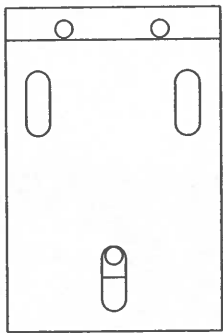
DRAWING PREPARED IN
ACCORDANCE WITH ANSI Y14.5M-1982



HOLOPHANE RESEARCH AND DEVELOPMENT CENTER NEWARK, OHIO		UNLESS OTHERWISE SPECIFIED DIMENSIONS ARE IN INCHES. TOLERANCES ARE:		.XXX ± .015 .XX ± .03 ANG ± 2°		HOLOPHANE®	
THIS PRINT IS THE CONFIDENTIAL PROPERTY OF HOLOPHANE AND IS LOANED SUBJECT TO RETURN UPON DEMAND AND UPON EXPRESS CONDITION THAT IT WILL NOT BE DISCLOSED TO ANY THIRD PARTY WITHOUT THE PRIOR WRITTEN PERMISSION OF HOLOPHANE OR USED DIRECTLY OR INDIRECTLY IN ANY WAY DETRIMENTAL TO THE INTEREST OF HOLOPHANE		DWG BY: MAR DATE: 2-20-06 ENG: MAR DATE: 2-20-06 CHK: APPD BY:		TITLE SS MEDIUM NIRRORSTAR WITH SMST COMPONENTS		REV	
CAD MODEL: MD1978.DRW		ISSUE PCN:		SIZE D SCALE		SHEET 3	

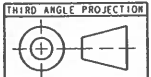
FOR INFORMATION ONLY - TUNNEL LUMINAIRE SHOP DRAWINGS FROM CONTRACT 68198

REVISIONS						
DATE	REV	DESCRIPTION	PCN	DATE	BY	CHK
1-6-05	B6	A UPDATED ARM VIEW			BJB	
1-31-05	C2	B UPDATED ARM VIEW; REVISED SH 2			BJB	
2-8-06	A5	C 1) BR-1337-A WAS BR-1337			MAR	
	D4	C 2) 24.000 WAS 17.750				
	A7	C 3) PT-1263-A WAS PT-1263				
2-21-06	A1	D 09261R WAS 09261			MAR	



B	B	REVISION	REV STATUS
2	1	SHEET	OF SHEETS

DRAWING PREPARED IN
ACCORDANCE WITH ANSI Y14.5M-1982

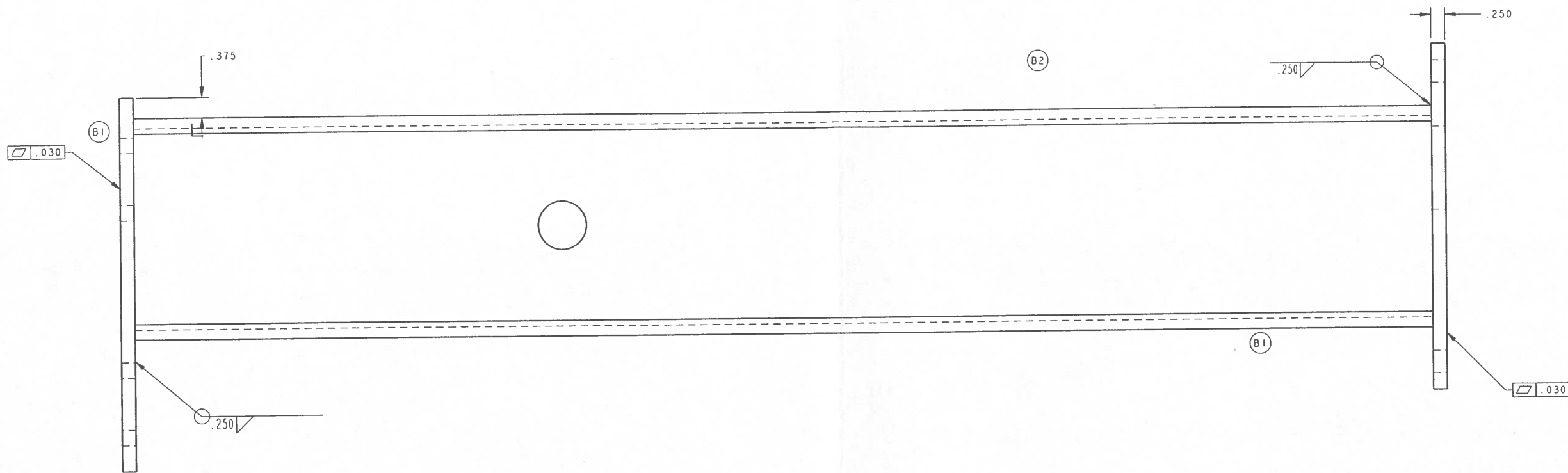


HOLOPHANE RESEARCH AND DEVELOPMENT CENTER NEWARK, OHIO		UNLESS OTHERWISE SPECIFIED DIMENSIONS ARE IN INCHES. TOLERANCES ARE:		XX±.015 XX±.03 ANG ± 2°	HOLOPHANE®
DRW BY: BJB	DATE: 10-7-04	ENG: BJB	DATE: 10-25-04		
THIS PRINT IS THE CONFIDENTIAL PROPERTY OF HOLOPHANE AND IS LOANED SUBJECT TO RETURN UPON DEMAND AND UPON EXPRESS CONDITION THAT IT WILL NOT BE DISCLOSED TO ANY THIRD PARTY WITHOUT THE PRIOR WRITTEN PERMISSION OF HOLOPHANE OR USED DIRECTLY OR INDIRECTLY IN ANY WAY DETRIMENTAL TO THE INTEREST OF HOLOPHANE		CAD MODEL: 09261.DRW		ISSUE PCN: Z	

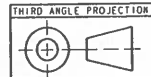
SIZE: D	FSCH NO:	MD-1984	REV: D
SCALE:	SHEET 1 OF 2		

FOR INFORMATION ONLY - TUNNEL LUMINAIRE SHOP DRAWINGS FROM CONTRACT 68198

REV		DESCRIPTION	PCN	DATE	BY	CHK
C8, B3	B	B1) ADDED .030 FLATNESS		1-31-05	BJB	
C4	B	B2) MOVED WELD LOCATION		1-31-05	BJB	



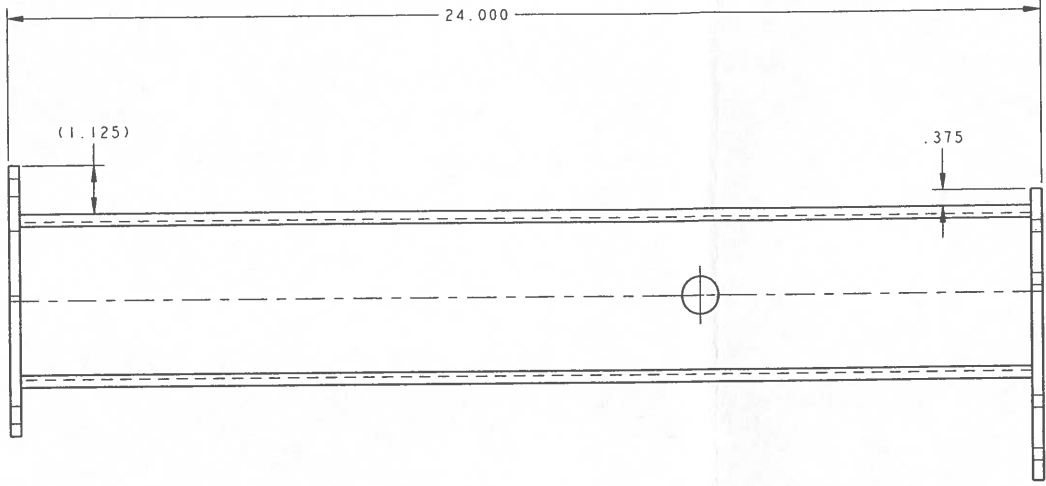
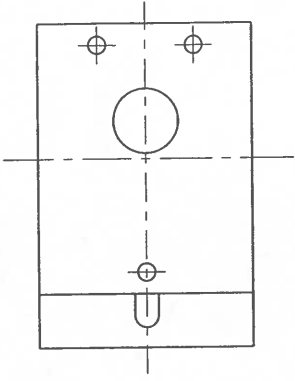
DRAWING PREPARED IN
ACCORDANCE WITH ANSI Y14.5M-1982



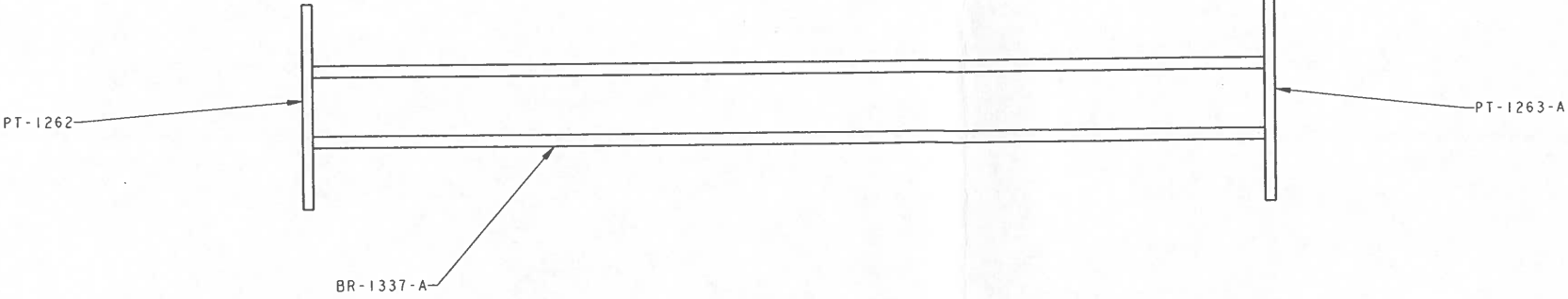
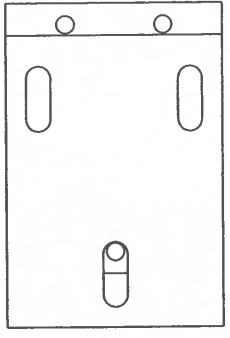
HOLOPHANE RESEARCH AND DEVELOPMENT CENTER NEWARK, OHIO		UNLESS OTHERWISE SPECIFIED DIMENSIONS ARE IN INCHES. TOLERANCES ARE: .XXX ± .015 .XX ± .03 ANG ± 2°		HOLOPHANE®	
DRN BY: BJB	DATE: 10-7-04	TITLE: 09261 ASSEMBLY		REV: B	
ENGR: BJB	DATE: 10-25-04	SIZE: D		SHEET: 2	
CHK:		DWG NO: MD-1984			
APPR BY:		SCALE:			
CAD MODEL: 09261.DRW		ISSUE PCN: Z			

FOR INFORMATION ONLY - TUNNEL LUMINAIRE SHOP DRAWINGS FROM CONTRACT 68198

REVISIONS					
DATE	REV	DESCRIPTION	PCN	DATE	BY

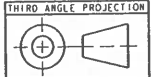


SCALE 1/2



X	REVISION	REV STATUS
2	1	SHEET

DRAWING PREPARED IN ACCORDANCE WITH ANSI Y14.5M-1982



HOLOPHANE
RESEARCH AND DEVELOPMENT CENTER
NEWARK, OHIO

THIS PRINT IS THE CONFIDENTIAL PROPERTY OF HOLOPHANE AND IS LOANED SUBJECT TO RETURN UPON DEMAND AND UPON EXPRESS CONDITION THAT IT WILL NOT BE DISCLOSED TO ANY THIRD PARTY WITHOUT THE PRIOR WRITTEN PERMISSION OF HOLOPHANE OR USED DIRECTLY OR INDIRECTLY IN ANY WAY DETRIMENTAL TO THE INTEREST OF HOLOPHANE

CAD MODEL: 09261L.DRW

UNLESS OTHERWISE SPECIFIED
DIMENSIONS ARE IN INCHES.
TOLERANCES ARE:

OWN BY: MAR DATE: 2-13-06
ENGR: MAR DATE: 2-13-06
CHK:
APPR BY:

ISSUE PCN:

XXI-015
XX-03
ANG ± 2°

HOLOPHANE®

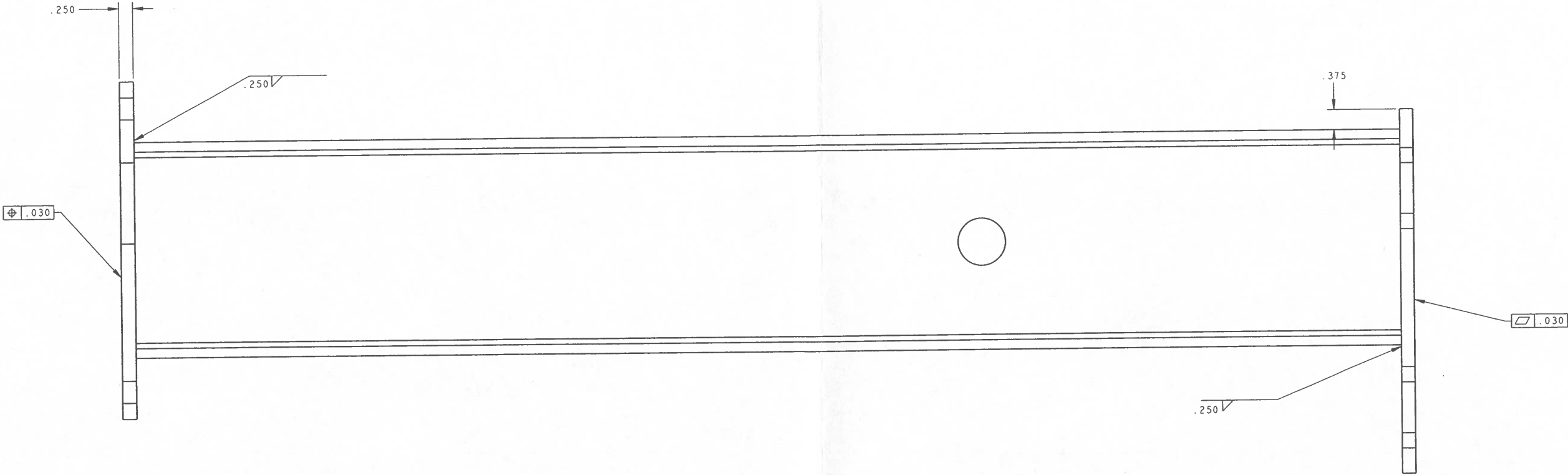
09261L ASSEMBLY

SIZE: D
SCALE: 1/2
SHEET 1 OF 2

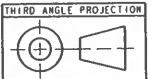
MD-2181

FOR INFORMATION ONLY - TUNNEL LUMINAIRE SHOP DRAWINGS FROM CONTRACT 68198

REVISIONS						
ZONE	REV	DESCRIPTION	PCN	DATE	BY	CHK



DRAWING PREPARED IN
ACCORDANCE WITH ANSI Y14.5M-1982



HOLOPHANE RESEARCH AND DEVELOPMENT CENTER NEWARK, OHIO		UNLESS OTHERWISE SPECIFIED DIMENSIONS ARE IN INCHES. TOLERANCES ARE:		.XXX ± .015 .XX ± .03 ANG ± 2°		HOLOPHANE®	
THIS PRINT IS THE CONFIDENTIAL PROPERTY OF HOLOPHANE AND IS LOANED SUBJECT TO RETURN UPON DEMAND AND UPON EXPRESS CONDITION THAT IT WILL NOT BE DISCLOSED TO ANY THIRD PARTY WITHOUT THE PRIOR WRITTEN PERMISSION OF HOLOPHANE OR USED DIRECTLY OR INDIRECTLY IN ANY WAY DETRIMENTAL TO THE INTEREST OF HOLOPHANE		DWN BY: MAR DATE: 2-13-06 ENGR: MAR DATE: 2-13-06 CHK: APPD BY:		TITLE 09261L ASSEMBLY		DWN NO MD-2181	
CAD MODEL: 09261L.DRW		ISSUE PCN:		SCALE		SHEET 2	