

STATE OF ILLINOIS  
DEPARTMENT OF TRANSPORTATION

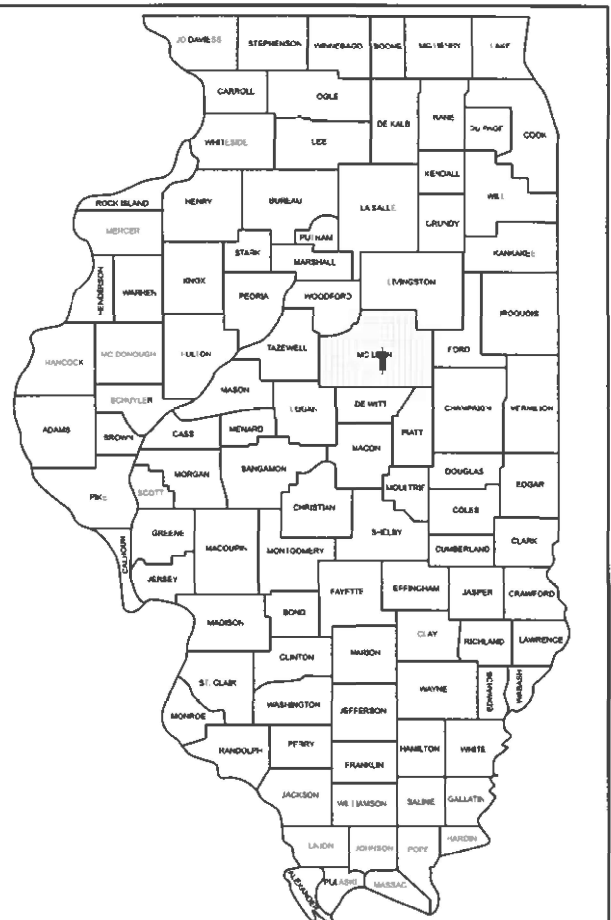
| F.A.P.<br>RTE. | SECTION    | COUNTY             | TOTAL<br>SHEETS | SHEET<br>NO. |
|----------------|------------|--------------------|-----------------|--------------|
| 322            | HMLT2025-1 | MCLEAN             | 22              | 1            |
| ILLINOIS       |            | CONTRACT NO. 70H51 |                 |              |

FOR INDEX OF SHEETS, SEE SHEET NO. 2  
FOR SUMMARY OF QUANTITIES, SEE SHEET NO. 3 - 4

PROPOSED  
HIGHWAY PLANS

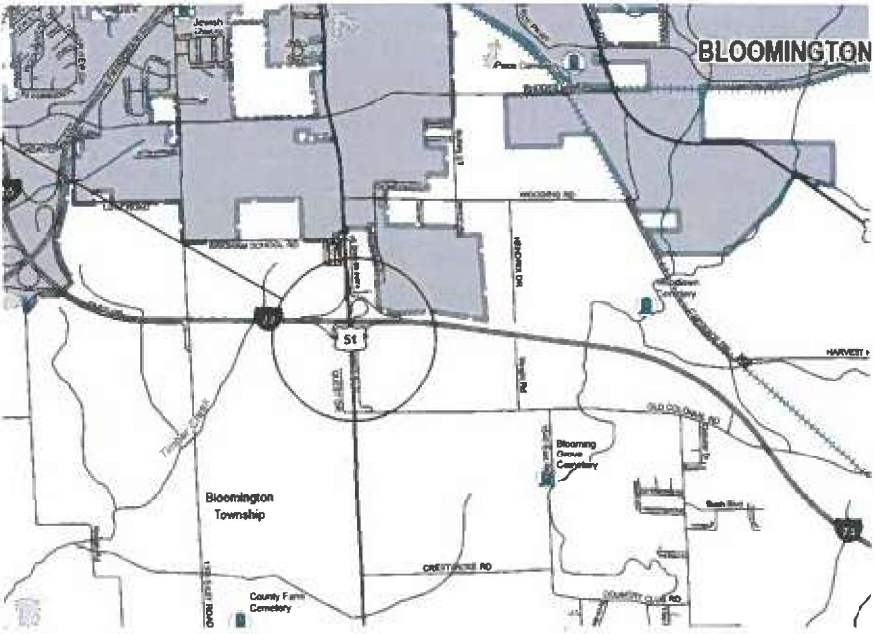
FAP ROUTE 322 (US 51)  
SECTION HMLT2025-1  
PROJECT NHPP-Y07P(898)  
LIGHTING  
MCLEAN COUNTY  
C-95-035-25

P-95-009-25

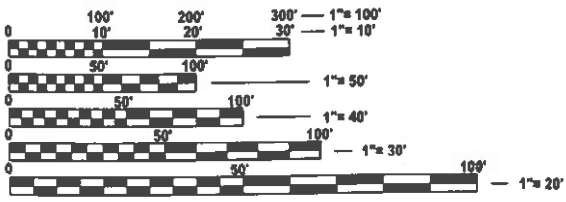


LOCATION OF SECTION INDICATED THUS: - [thick black border] -

US 51 & I-74 LOCATION



0 0.5 1 2 Miles



FULL SIZE PLANS HAVE BEEN PREPARED USING STANDARD  
ENGINEERING SCALES. REDUCED SIZED PLANS WILL NOT  
CONFORM TO STANDARD SCALES. IN MAKING MEASUREMENTS  
ON REDUCED PLANS, THE ABOVE SCALES MAY BE USED.

J.U.L.I.E.  
JOINT UTILITY LOCATION INFORMATION FOR EXCAVATION  
1-800-892-0123  
OR 811

PROJECT ENGINEER: JEFF ALLEN  
PHONE NUMBER: (217)465-4181

CONTRACT NO. 70H51

STATE OF ILLINOIS  
DEPARTMENT OF TRANSPORTATION

SUBMITTED 08/15/2025  
Kenneth A. [Signature]  
REGIONAL ENGINEER  
August 15, 2025  
[Signature]  
ENGINEER OF DESIGN AND ENVIRONMENT  
August 15, 2025  
[Signature]  
DIRECTOR OF HIGHWAYS PROJECT IMPLEMENTATION

PRINTED BY THE AUTHORITY  
OF THE STATE OF ILLINOIS

## INDEX OF SHEETS

| SHEET NO. | DESCRIPTION                               |
|-----------|---|
| 1         | COVER SHEET                               |
| 2         | INDEX OF SHEETS                           |
| 2         | LIST OF STANDARDS                         |
| 2         | GENERAL NOTES                             |
| 3 - 4     | SUMMARY OF QUANTITIES                     |
| 5 - 11    | LIGHTING REMOVAL PLAN SHEETS              |
| 12 - 18   | PROPOSED LIGHTING PLAN SHEETS             |
| 19        | WIRING DIAGRAMS                           |
| 20        | LUMINARE PERFORMANCE TABLE                |
| 21        | RODENT SHEILD FOR ALUMINUM POLE           |
| 22        | NIGHT TIME INSPECTION OF ROADWAY LIGHTING |

## GENERAL NOTES

### G.N.-100A

ELECTRONIC FILES AND/OR ELECTRONIC SURVEY INFORMATION INCLUDING CADD FILES WILL NOT BE AVAILABLE TO THE CONTRACTOR.

### G.N. 105.07C

EXISTING STATE-OWNED AND MAINTAINED UNDERGROUND UTILITY FACILITIES EXIST WITHIN THE ROW. THE DEPARTMENT IS NOT A MEMBER OF JULIE AND DOES NOT LOCATE IT'S OWN FACILITIES. THE CONTRACTOR SHALL BE RESPONSIBLE AT THEIR OWN EXPENSE FOR SECURING AN APPROVED LOCATING FIRM TO LOCATE ALL EXISTING IDOT UNDERGROUND FACILITIES PRIOR TO COMMENCING ANY EXCAVATION, PER THE REQUIREMENTS OF ARTICLE 803 OF THE STARDARD SPECIFICATIONS. UTILITY LOCATES MAY ALSO BE REQUIRED OUTSIDE THE PROJECT LIMITS, SUCH AS FOR TRAFFIC CONTROL SIGNING AND OTHER ITEMS THE CONTRACTOR MAY OBTAIN, ON REQUEST, PLANS OF EXISTING ELECTRICAL FACILITIES FROM THE DEPARTMENT FOR FURTHER INFORMATION. THE CONTRACTOR MAY CONTACT THE DISTRICT TRAFFIC OPERATIONS ENGINEER, ROBERT HODGSON, 217-712-9018.

THE CONTRACTOR SHALL ALSO BE RESPONSIBLE FOR LOCATNG AND PROVIDING PROTECTION FOR FACILITIES DURING ALL PHASES OF CONSTRUCTION. IF, AT ANY TIME, THE FACILITIES ARE DAMAGED, THE CONTRACTOR SHALL IMMEDIATELY NOTIFY THE DEPARTMENT AND MAKE ALL NECESSARY ARRANGEMENTS FOR REPAIR TO THE SATISFACTION OF THE ENGINEER. THIS WORK SHALL BE INCLUDED IN THE CONTRACT BID PRICE AND NO ADDITIONAL COMPENSATION WILL BE ALLOWED.

### MISC. ELECTRICAL GENERAL NOTES

- THE CONTRACTOR IS RESPONSIBLE FOR UNCOVERING OR HAND DIGGING AROUND UTILITIES AS NECESSARY. THE COST OF THIS WORK IS TO BE INCLUDED WITH THE APPLICABLE UNDERGREOUND CONDUIT OR UNIT DUCT PAY ITEM.
- EXISTING SIGN LIGHTING TO REMAIN IN PLACE AND BE REMOVED BY OTHERS.

## LIST OF HIGHWAY STANDARDS

| STANDARD NO. | DESCRIPTION  |
|--------------|--|
| 000001-08    | STANDARD SYMBOLS, ABBREVIATIONS AND PATTERNS                                 |
| 001006       | DECIMAL CF AN INCH AND OF A FOOT   |
| 701101-05    | OFF-RD OPERATIONS, MULTILANE, 15' (4.5M) TO 24" (600MM) FROM PAVEMENT EDGE   |
| 701400-12    | APPROACH TO LANE CLOSURE, FREEWAY/EXPRESSWAY                                 |
| 701406-13    | LANE CLOSURE, FREEWAY/EXPRESSWAY, DAY OPERATIONS ONLY                        |
| 701421-08    | LANE CLOSURE, MULTILANE, DAY OPERATIONS ONLY, FOR SPEEDS ≥ 45 MPH TO 55 MPH. |
| 701456-05    | PARTIAL EXIT RAMP CLOSURE, FREEWAY/EXPRESSWAY                                |
| 701701-10    | URBAN LANE CLOSURE, MULTILANE INTERSECTION                                   |
| 701901-10    | TRAFFIC CONTROL DEVICES  |
| 805001-01    | ELETRIC SERVICE INSTALLATION DETAILS   |
| 821101-03    | LUMINAIRE WIRING IN POLE   |
| 825011-04    | LIGHTING CONTROLLER PEDESTAL MOUNTED, 240V                                   |
| 830006-05    | LIGHT POLE ALUMINUM DAVIT ARM  |
| 836001-05    | LIGHT POLE FOUNDATION  |
| 838001-01    | BREAKAWAY DEVICES  |

## LEGEND

|  |  |
|--|--|
|  | EXISTING ELECTRIC SERVICE TO BE REMOVED.   |
|  | EXISTING LIGHTING CONTROLLER TO BE REMOVED.  |
|  | PROPOSED LIGHTING CONTROLLER, 240V, 60A.   |
|  | EXISTING LIGHTING UNIT TO BE REMOVED.  |
|  | EXISTING HIGHMAST TOWER LIGHTING UNIT TO BE REMOVED.   |
|  | PROPOSED LIGHTING UNIT, LUMINAIRE, LED, ROADWAY, OUTPUT DESIGNATION H, 45 FT ALUMINUM POLE, 15 FT MAST ARM, BREAKAWAY COUPLINGS WITH SS SCREEN, ON METAL FOUNDATION. |
|  | EXISTING ELECTRIC CABLE IN CONDUIT TO BE REMOVED.  |
|  | PROPOSED UNIT DUCT, 600V, 2-1C NO. 8, 1/C NO. 8 GROUND (XLP-TYPE USE), 3/4" DIA. POLYETHYLENE. (UNLESS STATED OTHERWISE)   |
|  | PROPOSED COILABLE NONMETALLIC CONDUIT 2" DIA. LENGTH AS NOTED.   |

MODEL: General Notes [Sheet]  
FILE NAME: c:\p\\_work\p\work\projects\1032394\DS70H51-Sht-Index.dgn

|  |                             |            |                     |   |   |  |  |  |                    |            |        |                 |              |
|--|-----------------------------|------------|---------------------|---|---|--|--|--|--------------------|------------|--------|-----------------|--------------|
|  | USER NAME = Justin.Cearlock | DESIGNED - | REVISED -           | STATE OF ILLINOIS<br>DEPARTMENT OF TRANSPORTATION | INDEX OF SHEETS, HIGHWAY STANDARDS,<br>GENERAL NOTES & LEGEND |  |  |  | F.A.P.<br>R.T.E.   | SECTION    | COUNTY | TOTAL<br>SHEETS | SHEET<br>NO. |
|  |                             | DRAWN -    | REVISED -           |   |   |  |  |  | 322                | HMLT2025-1 | MCLEAN | 22              | 2            |
|  |                             | CHECKED -  | REVISED -           |   |   |  |  |  | CONTRACT NO. 70H51 |            |        |                 |              |
|  | PLOT DATE = 1/13/2025       | DATE -     | REVISED -           |   | ILLINOIS FED.AID PROJECT                                      |  |  |  |                    |            |        |                 |              |
|  | SCALE:                      |            | SHEET 1 OF 1 SHEETS |   |   |  |  |  | STA. TO STA.       |            |        |                 |              |

MODEL: SQO 1 (Sheet)  
FILE NAME: c:\pwworking\dotproject\dot1032394\0570H51-Sht-SQO.dgn

|  |          |  |   |          |  |                |                            |          |
|--|----------|--|---|----------|--|----------------|----------------------------|----------|
| LOCATION OF WORK:<br><br><br><br><br>COUNTY:<br>FUNDING BREAKOUT:<br>CONSTRUCTION TYPE CODE: |          |  |   |          |  |                | FAP 322 / US 51            |          |
|  |          |  |   |          |  |                | STA. 2080+60 TO STA. 37+50 |          |
|  |          |  |   |          |  |                | FREEWAY                    |          |
|  |          |  |   |          |  |                | URBAN                      |          |
|  |          |  |   |          |  |                | MCLEAN                     |          |
|  |          |  |   |          |  |                | 80% FED / 20% STATE        |          |
|  |          |  |   |          |  |                | 0021                       |          |
|  |          |  |   |          |  |                |                            |          |
|  | CODE NO. |  | ITEM  | UNIT     |  | TOTAL QUANTITY |                            | QUANTITY |
|  |          |  |   |          |  |                |                            |          |
|  | 67100100 |  | MOBILIZATION  | LUMP SUM |  | 1.0            |                            | 1.0      |
|  |          |  |   |          |  |                |                            |          |
|  | 70100700 |  | TRAFFIC CONTROL AND PROTECTION, STANDARD 701406                                     | LUMP SUM |  | 1.0            |                            | 1.0      |
|  |          |  |   |          |  |                |                            |          |
|  | 70100310 |  | TRAFFIC CONTROL AND PROTECTION, STANDARD 701421                                     | LUMP SUM |  | 1.0            |                            | 1.0      |
|  |          |  |   |          |  |                |                            |          |
|  | 70100825 |  | TRAFFIC CONTROL AND PROTECTION, STANDARD 701456                                     | LUMP SUM |  | 1.0            |                            | 1.0      |
|  |          |  |   |          |  |                |                            |          |
|  | 70102635 |  | TRAFFIC CONTROL AND PROTECTION, STANDARD 701701                                     | LUMP SUM |  | 1.0            |                            | 1.0      |
|  |          |  |   |          |  |                |                            |          |
|  | 80400100 |  | ELECTRIC SERVICE INSTALLATION   | EACH     |  | 2.0            |                            | 2.0      |
|  |          |  |   |          |  |                |                            |          |
|  | 80400200 |  | ELECTRIC UTILITY SERVICE CONNECTION   | LUMP SUM |  | 1.0            |                            | 1.0      |
|  | 81028240 |  | UNDERGROUND CONDUIT, GALVANIZED STEEL, 4" DIA.                                      | FOOT     |  | 220.0          |                            | 220.0    |
|  | 81028750 |  | UNDERGROUND CONDUIT, COILABLE NONMETALLIC, 2" DIA.                                  | FOOT     |  | 1,030.0        |                            | 1,030.0  |
|  |          |  |   |          |  |                |                            |          |
|  | 81603000 |  | UNIT DUCT, 600V, 2-1C NO.8, 1/C NO.8 GROUND, (XLP-TYPE USE), 3/4" DIA. POLYETHYLENE | FOOT     |  | 14,355.0       |                            | 14,355.0 |
|  |          |  |   |          |  |                |                            |          |
|  | 82110007 |  | LUMINAIRE, LED, ROADWAY, OUTPUT DESIGNATION G                                       | EACH     |  | 61.0           |                            | 61.0     |
|  |          |  |   |          |  |                |                            |          |
|  | 82500330 |  | LIGHITNG CONTROLLER, PEDESTAL MOUNTED, 240VOLT, 60AMP                               | EACH     |  | 2.0            |                            | 2.0      |
|  |          |  |   |          |  |                |                            |          |
|  | 83003600 |  | LIGHT POLE, ALUMINUM, 45 FT. M.H., 15 FT. DAVIT ARM                                 | EACH     |  | 61.0           |                            | 61.0     |
|  |          |  |   |          |  |                |                            |          |
|  | 83600356 |  | LIGHT POLE FOUNDATION, METAL, 15" BOLT CIRCLE 8 5/8" X 6"                           | EACH     |  | 61.0           |                            | 61.0     |
|  |          |  |   |          |  |                |                            |          |
| * DENOTES SPECIALTY ITEM   |          |  |   |          |  |                |                            |          |

|                             |                       |           |   |                       |  |  |                                  |            |        |                 |              |
|-----------------------------|-----------------------|-----------|---|-----------------------|--|--|----------------------------------|------------|--------|-----------------|--------------|
| USER NAME = Justin.Cearlock | DESIGNED -            | REVISED - | STATE OF ILLINOIS<br>DEPARTMENT OF TRANSPORTATION | SUMMARY OF QUANTITIES |  |  | F.A.P.<br>RTE.                   | SECTION    | COUNTY | TOTAL<br>SHEETS | SHEET<br>NO. |
|                             | DRAWN -               | REVISED - |   |                       |  |  | 322                              | HMLT2025-1 | MCLEAN | 22              | 3            |
|                             | CHECKED -             | REVISED - |   | SCALE:                |  |  | SHEET 1 OF 2 SHEETS STA. TO STA. |            |        |                 |              |
|                             | PLOT DATE = 1/14/2025 | DATE -    | REVISED -   |                       |  |  | ILLINOIS FED. AID PROJECT        |            |        |                 |              |

MODEL: SOQ 2 [Sheet]  
FILE NAME: c:\pwwork\pwwork\projects\1032394\DS70H51-Sht-SOQ.dgn

|                          |          |  |  |          |  |                |                            |
|--------------------------|----------|--|--|----------|--|----------------|----------------------------|
| LOCATION OF WORK:        |          |  |  |          |  |                | FAP 322 / US 51            |
|                          |          |  |  |          |  |                | STA. 2080+60 TO STA. 37+50 |
|                          |          |  |  |          |  |                | FREEWAY                    |
|                          |          |  |  |          |  |                | URBAN                      |
| COUNTY:                  |          |  |  |          |  |                | MCLEAN                     |
| FUNDING BREAKOUT:        |          |  |  |          |  |                | 80% FED / 20% STATE        |
| CONSTRUCTION TYPE CODE:  |          |  |  |          |  |                | 0021                       |
|                          |          |  |  |          |  |                |                            |
|                          | CODE NO. |  | ITEM   | UNIT     |  | TOTAL QUANTITY | QUANTITY                   |
|                          |          |  |  |          |  |                |                            |
|                          | 83800650 |  | BREAKAWAY DEVICE, COUPLING WITH STAINLESS STEEL SCREEN | EACH     |  | 244.0          | 244.0                      |
|                          |          |  |  |          |  |                |                            |
|                          | 84200600 |  | REMOVAL OF LIGHTING UNIT, NO SALVAGE                   | EACH     |  | 27.0           | 27.0                       |
|                          |          |  |  |          |  |                |                            |
|                          | 84200605 |  | REMOVAL OF LIGHTING TOWER, NO SALVAGE                  | EACH     |  | 5.0            | 5.0                        |
|                          |          |  |  |          |  |                |                            |
|                          | 84200804 |  | REMOVAL OF POLE FOUNDATION                             | EACH     |  | 27.0           | 27.0                       |
|                          |          |  |  |          |  |                |                            |
|                          | 84500110 |  | REMOVAL OF LIGHTING CONTROLLER                         | EACH     |  | 2.0            | 2.0                        |
|                          |          |  |  |          |  |                |                            |
|                          | 84500120 |  | REMOVAL OF ELECTRIC SERVICE INSTALLATION               | EACH     |  | 2.0            | 2.0                        |
|                          |          |  |  |          |  |                |                            |
|                          | 84500130 |  | REMOVAL OF LIGHTING CONTROLLER FOUNDATION              | EACH     |  | 1.0            | 1.0                        |
|                          |          |  |  |          |  |                |                            |
|                          | 89502300 |  | REMOVE ELECTRIC CABLE FROM CONDUIT                     | FOOT     |  | 33,098.0       | 33,098.0                   |
|                          |          |  |  |          |  |                |                            |
|                          | X8420510 |  | REMOVAL OF TOWER FOUNDATION                            | EACH     |  | 5.0            | 5.0                        |
|                          |          |  |  |          |  |                |                            |
|                          | X8730105 |  | ELECTRICAL CABLE IN CONDUIT, SIGNAL NO. 10 3C          | FOOT     |  | 697.0          | 697.0                      |
|                          |          |  |  |          |  |                |                            |
|                          | X8950450 |  | REMOVE EXISTING UNDERGROUND CONDUIT                    | FOOT     |  | 70.0           | 70.0                       |
|                          |          |  |  |          |  |                |                            |
|                          | Z0013798 |  | CONSTRUCTION LAYOUT                                    | LUMP SUM |  | 1.0            | 1.0                        |
|                          |          |  |  |          |  |                |                            |
|                          |          |  |  |          |  |                |                            |
|                          |          |  |  |          |  |                |                            |
| * DENOTES SPECIALTY ITEM |          |  |  |          |  |                |                            |

|                             |            |           |
|-----------------------------|------------|-----------|
| USER NAME = Justin.Cearlock | DESIGNED - | REVISED - |
|                             | DRAWN -    | REVISED - |
|                             | CHECKED -  | REVISED - |
| PLOT DATE = 1/23/2025       | DATE -     | REVISED - |

STATE OF ILLINOIS  
DEPARTMENT OF TRANSPORTATION

SUMMARY OF QUANTITIES

SCALE: SHEET 2 OF 2 SHEETS STA. TO STA.

|                    |            |                  |              |           |
|--------------------|------------|------------------|--------------|-----------|
| F.A.P. RTE.        | SECTION    | COUNTY           | TOTAL SHEETS | SHEET NO. |
| 322                | HMLT2025-1 | MCLEAN           | 22           | 4         |
| CONTRACT NO. 70H51 |            |                  |              |           |
| ILLINOIS           |            | FED. AID PROJECT |              |           |

MODEL: Default  
FILE NAME: c:\p\work\pwt\dot\projects\1032394\DS70H51\_Remlight\_1.dgn

|           |                   |          |   |         |   |
|-----------|-------------------|----------|---|---------|---|
| USER NAME | = Justin.Cearlock | DESIGNED | - | REVISED | - |
|           |                   | DRAWN    | - | REVISED | - |
|           |                   | CHECKED  | - | REVISED | - |
| PLOT DATE | = 1/6/2025        | DATE     | - | REVISED | - |

STATE OF ILLINOIS  
DEPARTMENT OF TRANSPORTATION

US-51 AND I-74  
LIGHTING REMOVAL PLAN

SCALE: SHEET 1 OF 7 SHEETS STA. TO STA.

| F.A.P.<br>RTE.            | SECTION    | COUNTY | TOTAL<br>SHEETS | SHEET<br>NO. |
|---------------------------|------------|--------|-----------------|--------------|
| 322                       | HMLT2025-1 | MCLEAN | 22              | 5            |
| CONTRACT NO. 70H51        |            |        |                 |              |
| ILLINOIS FED. AID PROJECT |            |        |                 |              |



MATCHLINE STA. 2084+00, SEE SHEET 6



MODEL: Default  
FILE NAME: c:\p\work\p\work\project\1032394\DS70H51\_RemLight\_2.dgn

|                             |            |           |
|-----------------------------|------------|-----------|
| USER NAME = Justin.Cearlock | DESIGNED - | REVISED - |
|                             | DRAWN -    | REVISED - |
|                             | CHECKED -  | REVISED - |
| PLOT DATE = 1/6/2025        | DATE -     | REVISED - |

STATE OF ILLINOIS  
DEPARTMENT OF TRANSPORTATION

US-51 AND I-74  
LIGHTING REMOVAL PLAN

SCALE: SHEET 2 OF 7 SHEETS STA. TO STA.

|                           |            |        |                 |              |
|---------------------------|------------|--------|-----------------|--------------|
| F.A.P.<br>RTE.            | SECTION    | COUNTY | TOTAL<br>SHEETS | SHEET<br>NO. |
| 322                       | HMLT2025-1 | MCLEAN | 22              | 6            |
| CONTRACT NO. 70H51        |            |        |                 |              |
| ILLINOIS FED. AID PROJECT |            |        |                 |              |



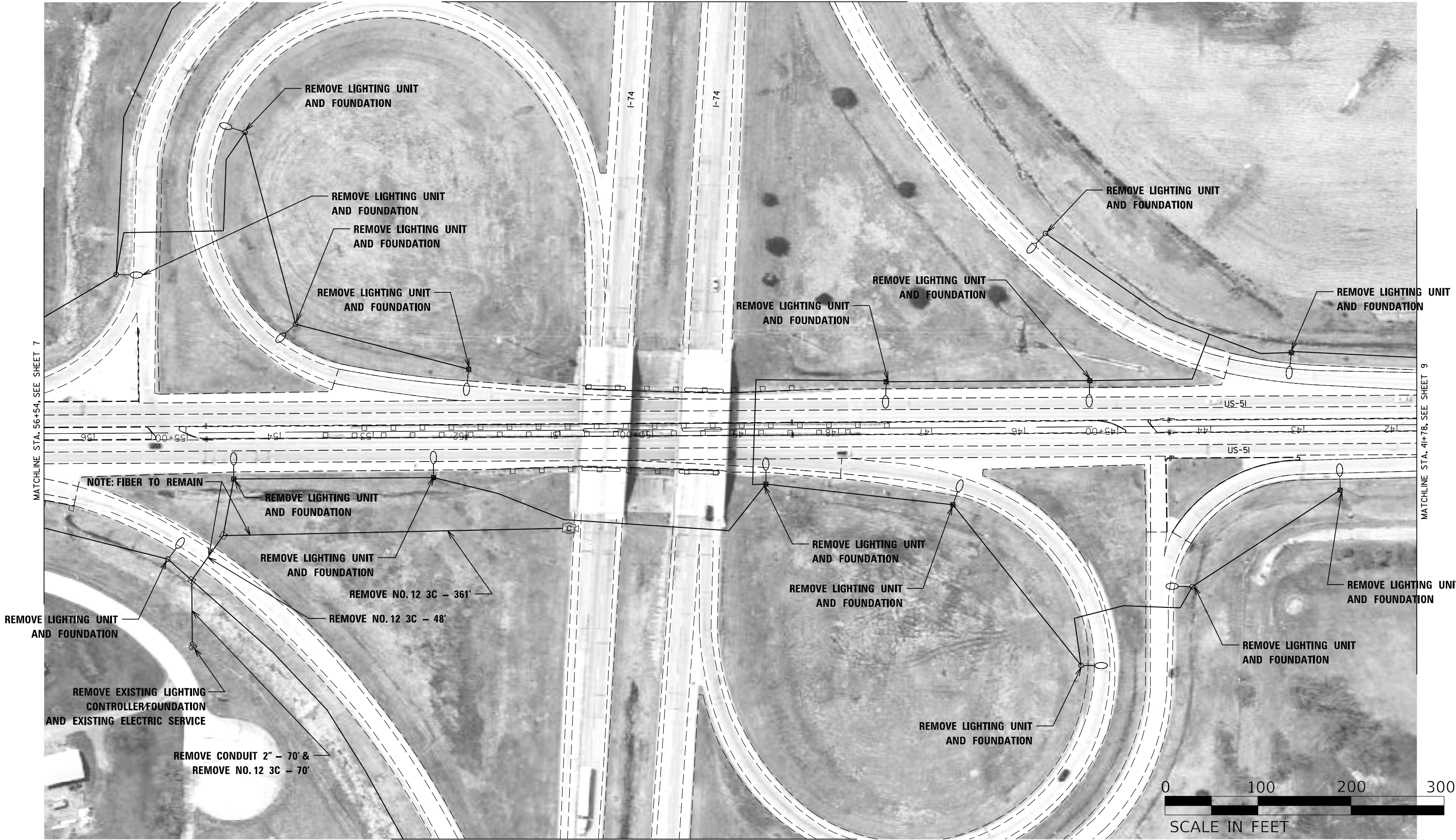
|                             |            |           |
|-----------------------------|------------|-----------|
| USER NAME = Justin.Cearlock | DESIGNED - | REVISED - |
|                             | DRAWN -    | REVISED - |
|                             | CHECKED -  | REVISED - |
| PLOT DATE = 1/6/2025        | DATE -     | REVISED - |

|  |         |      |        |      |         |
|--|---------|------|--------|------|---------|
| <p align="center"><b>US-51 AND I-74</b><br/><b>LIGHTING REMOVAL PLAN</b></p> |         |      |        |      |         |
| SCALE:   | SHEET 3 | OF 7 | SHEETS | STA. | TO STA. |

|                |            |                    |                 |              |
|----------------|------------|--------------------|-----------------|--------------|
| F.A.P.<br>RTE. | SECTION    | COUNTY             | TOTAL<br>SHEETS | SHEET<br>NO. |
| 322            | HMLT2025-1 | MCLEAN             | 22              | 7            |
|                |            | CONTRACT NO. 70H51 |                 |              |
| ILLINOIS       |            | FED. AID PROJECT   |                 |              |



MATCHLINE, SEE SHEET 10



MATCHLINE, SEE SHEET 11

MODEL: Default  
FILE NAME: c:\pwwork\projects\1032394\DS70H51 Remlight\_4.dgn

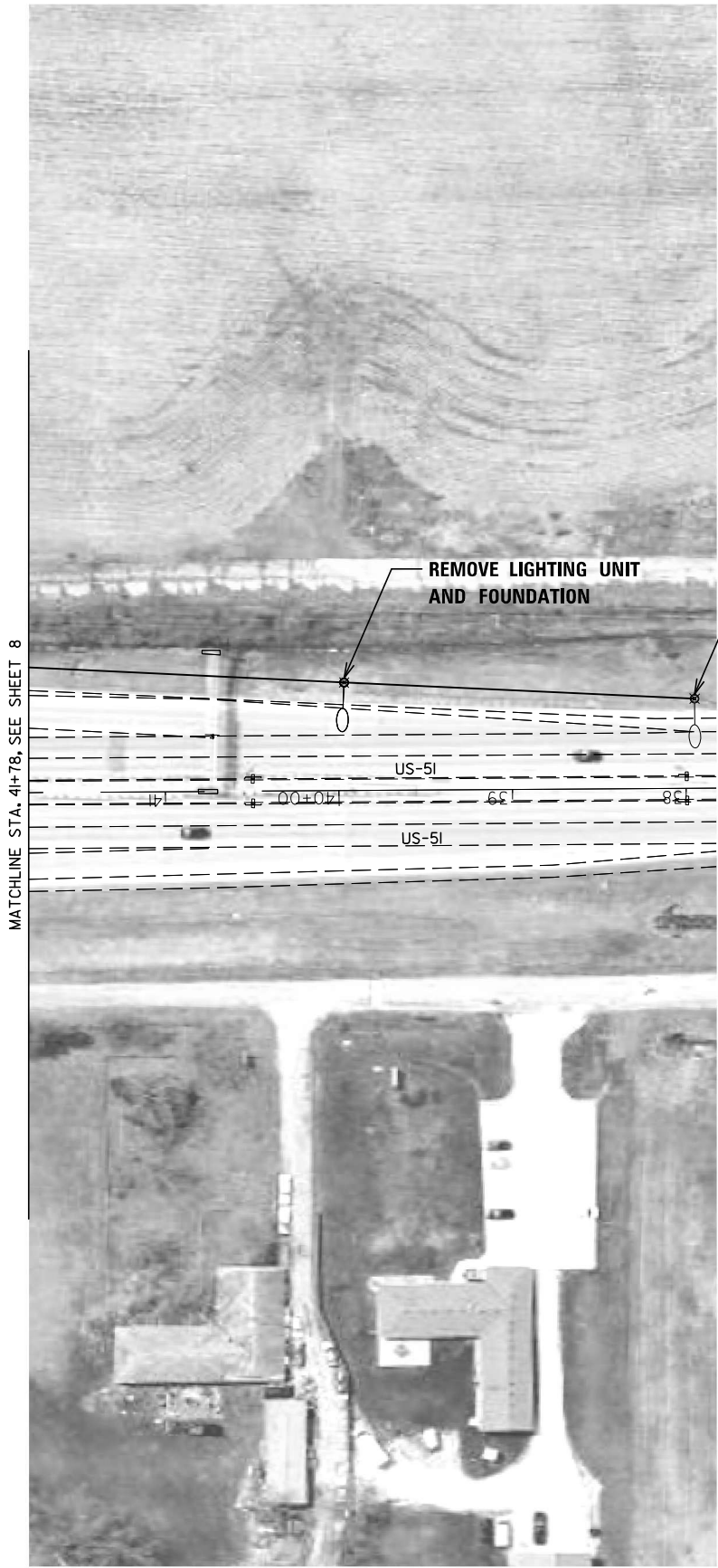
|                             |            |           |
|-----------------------------|------------|-----------|
| USER NAME = Justin.Cearlock | DESIGNED - | REVISED - |
|                             | DRAWN -    | REVISED - |
|                             | CHECKED -  | REVISED - |
|                             | DATE -     | REVISED - |
| PLOT DATE = 1/14/2025       |            |           |

STATE OF ILLINOIS  
DEPARTMENT OF TRANSPORTATION

US-51 AND I-74  
LIGHTING REMOVAL PLAN

SCALE: SHEET 4 OF 7 SHEETS STA. TO STA.

|                           |            |        |              |           |
|---------------------------|------------|--------|--------------|-----------|
| F.A.P. RTE.               | SECTION    | COUNTY | TOTAL SHEETS | SHEET NO. |
| 322                       | HMLT2025-1 | MCLEAN | 22           | 8         |
| CONTRACT NO. 70H51        |            |        |              |           |
| ILLINOIS FED. AID PROJECT |            |        |              |           |



MODEL: Default  
FILE NAME: c:\p\work\p\work\projects\1032394\DS70H51\_Remlight\_5.dgn

|                             |            |           |
|-----------------------------|------------|-----------|
| USER NAME = Justin.Cearlock | DESIGNED - | REVISED - |
|                             | DRAWN -    | REVISED - |
|                             | CHECKED -  | REVISED - |
| PLOT DATE = 1/6/2025        | DATE -     | REVISED - |

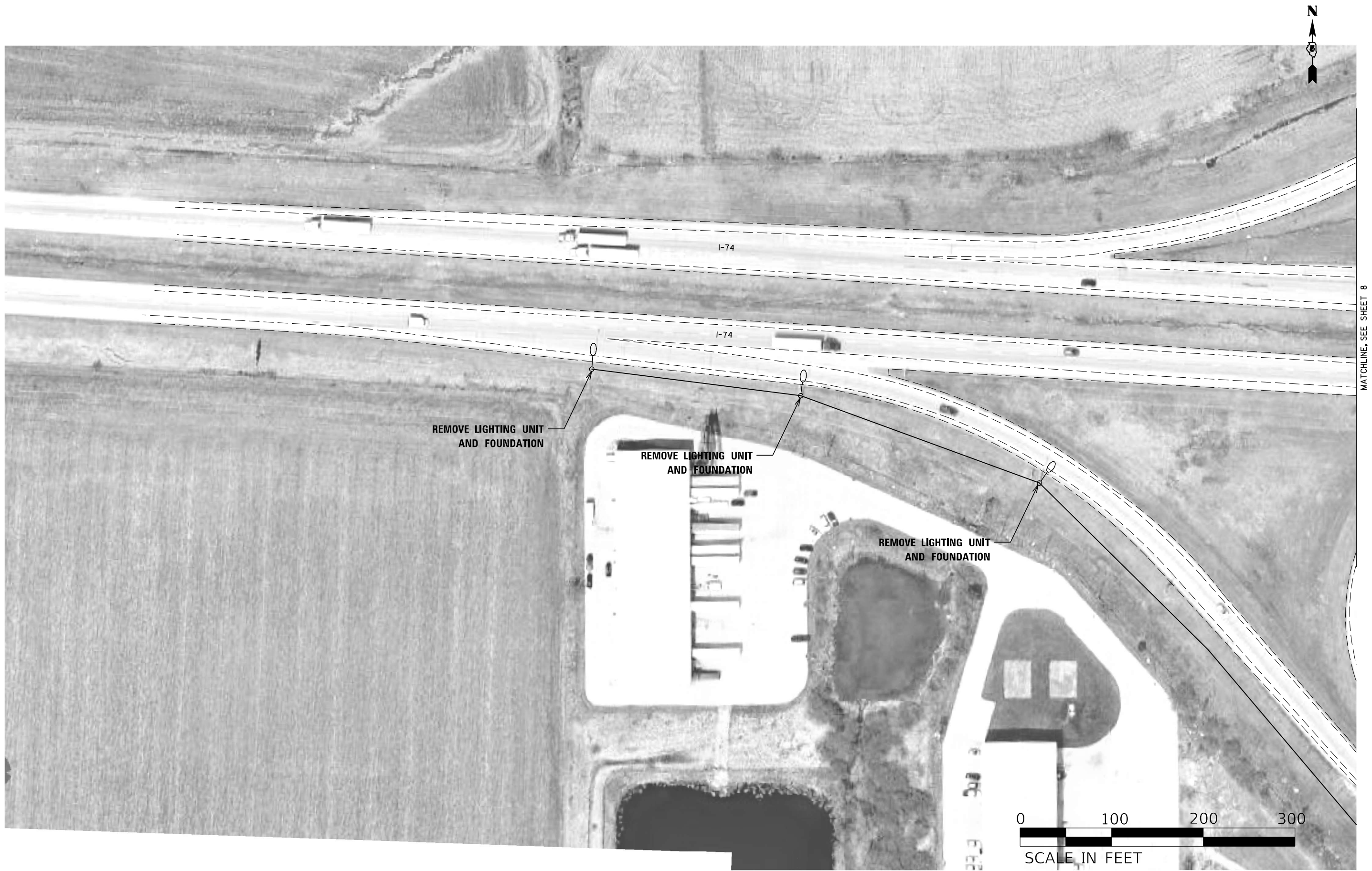
STATE OF ILLINOIS  
DEPARTMENT OF TRANSPORTATION

US-51 AND I-74  
LIGHTING REMOVAL PLAN

SCALE: SHEET 5 OF 7 SHEETS STA. TO STA.

|                           |                       |                  |                       |                   |
|---------------------------|-----------------------|------------------|-----------------------|-------------------|
| F.A.P.<br>RTE.<br>322     | SECTION<br>HMLT2025-1 | COUNTY<br>MCLEAN | TOTAL<br>SHEETS<br>22 | SHEET<br>NO.<br>9 |
| CONTRACT NO. 70H51        |                       |                  |                       |                   |
| ILLINOIS FED. AID PROJECT |                       |                  |                       |                   |

MODEL: Default  
FILE NAME: c:\pwwork\pwwork\projects\1032394\DS70H51\_Remlight\_6.dgn



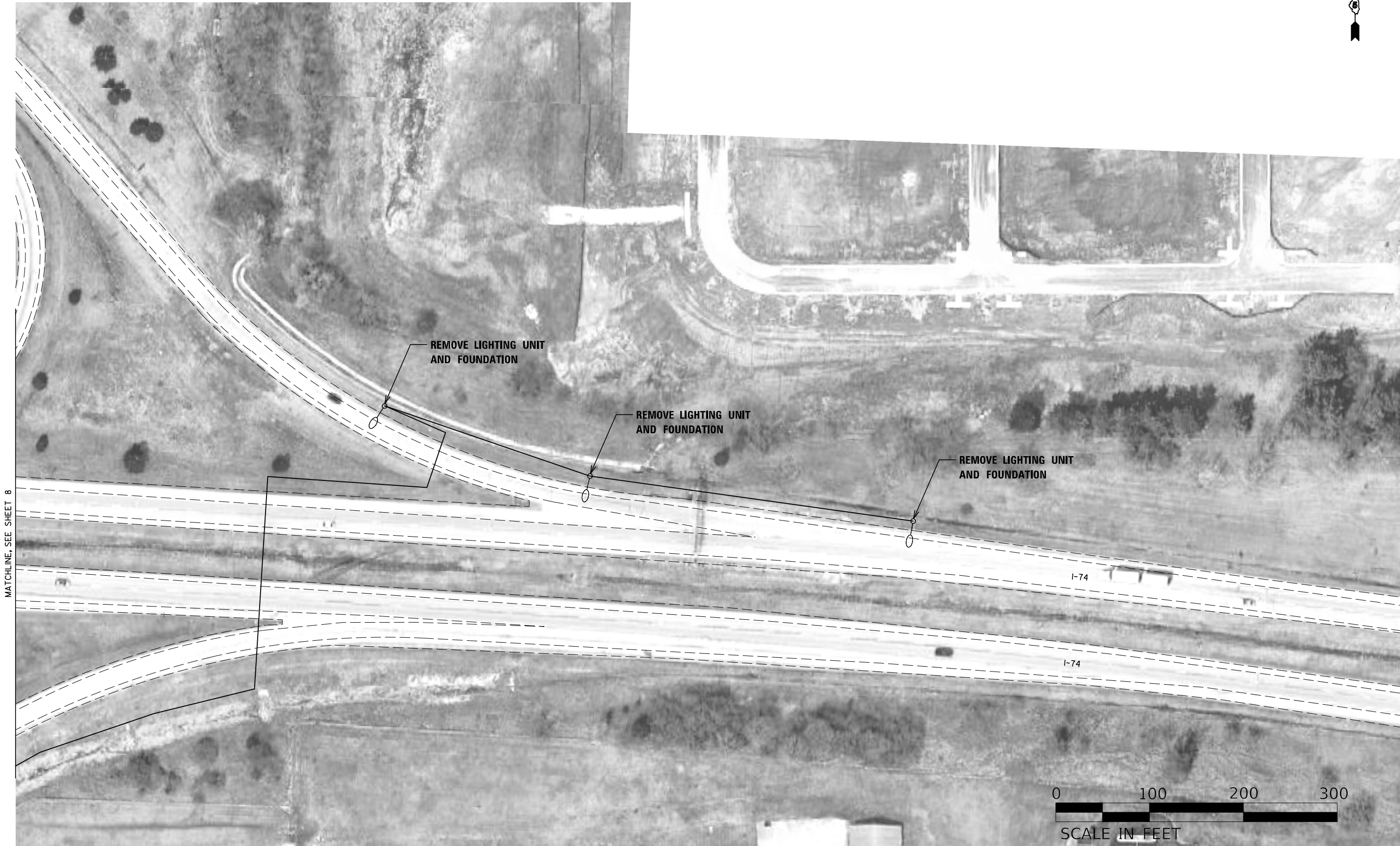
|           |                   |          |   |         |   |
|-----------|-------------------|----------|---|---------|---|
| USER NAME | = Justin.Cearlock | DESIGNED | - | REVISED | - |
|           |                   | DRAWN    | - | REVISED | - |
|           |                   | CHECKED  | - | REVISED | - |
| PLOT DATE | = 1/6/2025        | DATE     | - | REVISED | - |

STATE OF ILLINOIS  
DEPARTMENT OF TRANSPORTATION

US-51 AND I-74  
LIGHTING REMOVAL PLAN

SCALE: SHEET 6 OF 7 SHEETS STA. TO STA.

|                           |            |        |                 |              |
|---------------------------|------------|--------|-----------------|--------------|
| F.A.P.<br>RTE.            | SECTION    | COUNTY | TOTAL<br>SHEETS | SHEET<br>NO. |
| 322                       | HMLT2025-1 | MCLEAN | 22              | 10           |
| CONTRACT NO. 70H51        |            |        |                 |              |
| ILLINOIS FED. AID PROJECT |            |        |                 |              |



MODEL: Default  
FILE NAME: c:\pwwork\pwwork\projects\1032394\DS70H51\_Remlight\_7.dgn

|           |                   |          |   |         |   |
|-----------|-------------------|----------|---|---------|---|
| USER NAME | = Justin.Cearlock | DESIGNED | - | REVISED | - |
|           |                   | DRAWN    | - | REVISED | - |
|           |                   | CHECKED  | - | REVISED | - |
| PLOT DATE | = 1/6/2025        | DATE     | - | REVISED | - |

STATE OF ILLINOIS  
DEPARTMENT OF TRANSPORTATION

US-51 AND I-74  
LIGHTING REMOVAL PLAN

SCALE: SHEET 7 OF 7 SHEETS STA. TO STA.

|                           |            |        |                 |              |
|---------------------------|------------|--------|-----------------|--------------|
| F.A.P.<br>RTE.            | SECTION    | COUNTY | TOTAL<br>SHEETS | SHEET<br>NO. |
| 322                       | HMLT2025-1 | MCLEAN | 22              | 11           |
| CONTRACT NO. 70H51        |            |        |                 |              |
| ILLINOIS FED. AID PROJECT |            |        |                 |              |

MODEL: Default  
FILE NAME: c:\p\work\pwt\dl\projects\1032394\DS70H51\_Light\_1.dgn



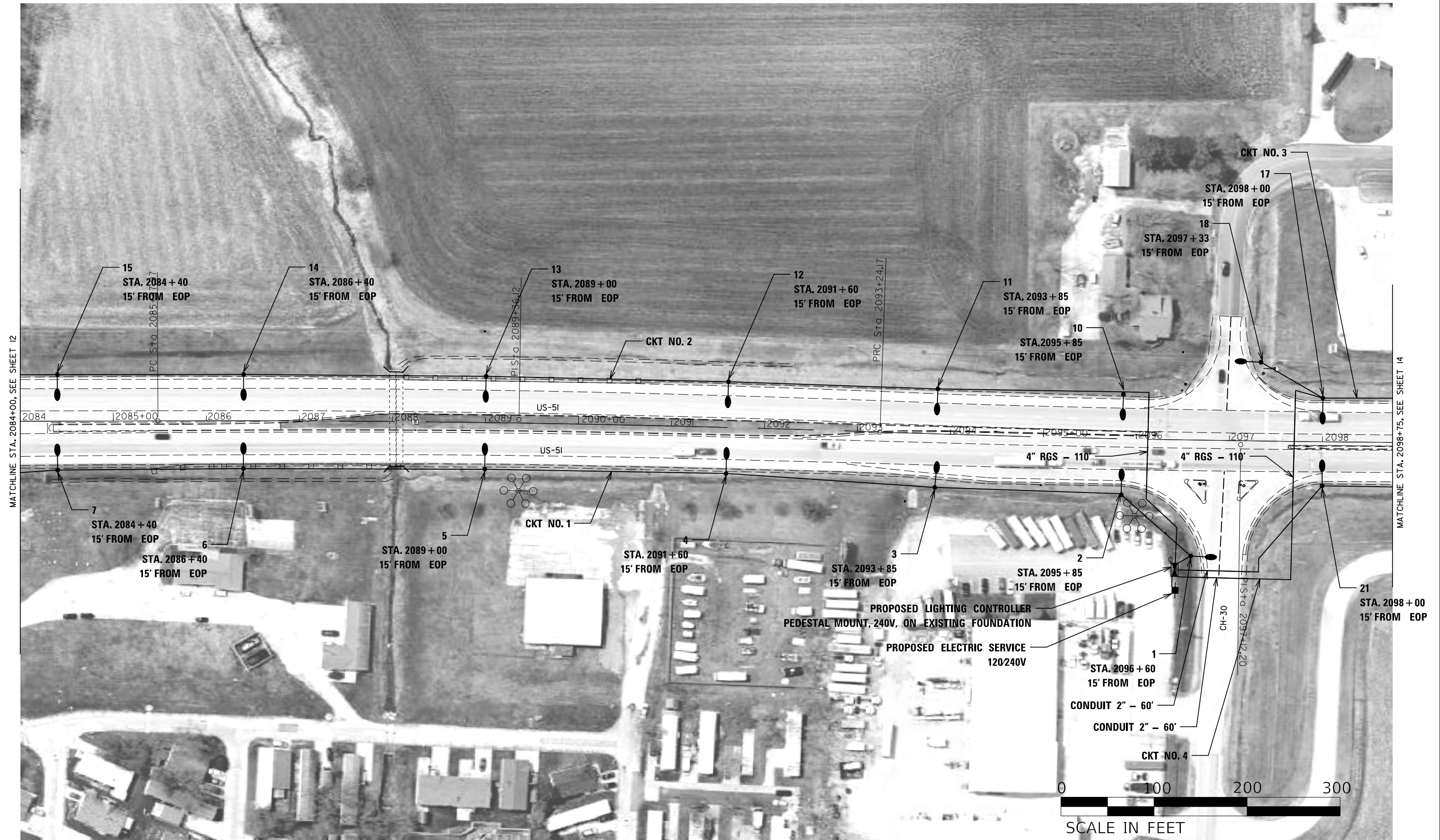
|  |                             |            |           |
|--|-----------------------------|------------|-----------|
|  | USER NAME = Justin.Cearlock | DESIGNED - | REVISED - |
|  |                             | DRAWN -    | REVISED - |
|  |                             | CHECKED -  | REVISED - |
|  | PLOT DATE = 1/7/2025        | DATE -     | REVISED - |

STATE OF ILLINOIS  
DEPARTMENT OF TRANSPORTATION

US-51 AND I-74  
PROPOSED LIGHTING PLAN

SCALE: SHEET 1 OF 7 SHEETS STA. TO STA.

| F.A.P. RTE.        | SECTION    | COUNTY           | TOTAL SHEETS | SHEET NO. |
|--------------------|------------|------------------|--------------|-----------|
| 322                | HMLT2025-1 | MCLEAN           | 22           | 12        |
| CONTRACT NO. 70H51 |            |                  |              |           |
| ILLINOIS           |            | FED. AID PROJECT |              |           |



MODEL: Default  
FILE NAME: c:\p\work\p\work\project\1032394\DS70H51\_Light\_2.dgn

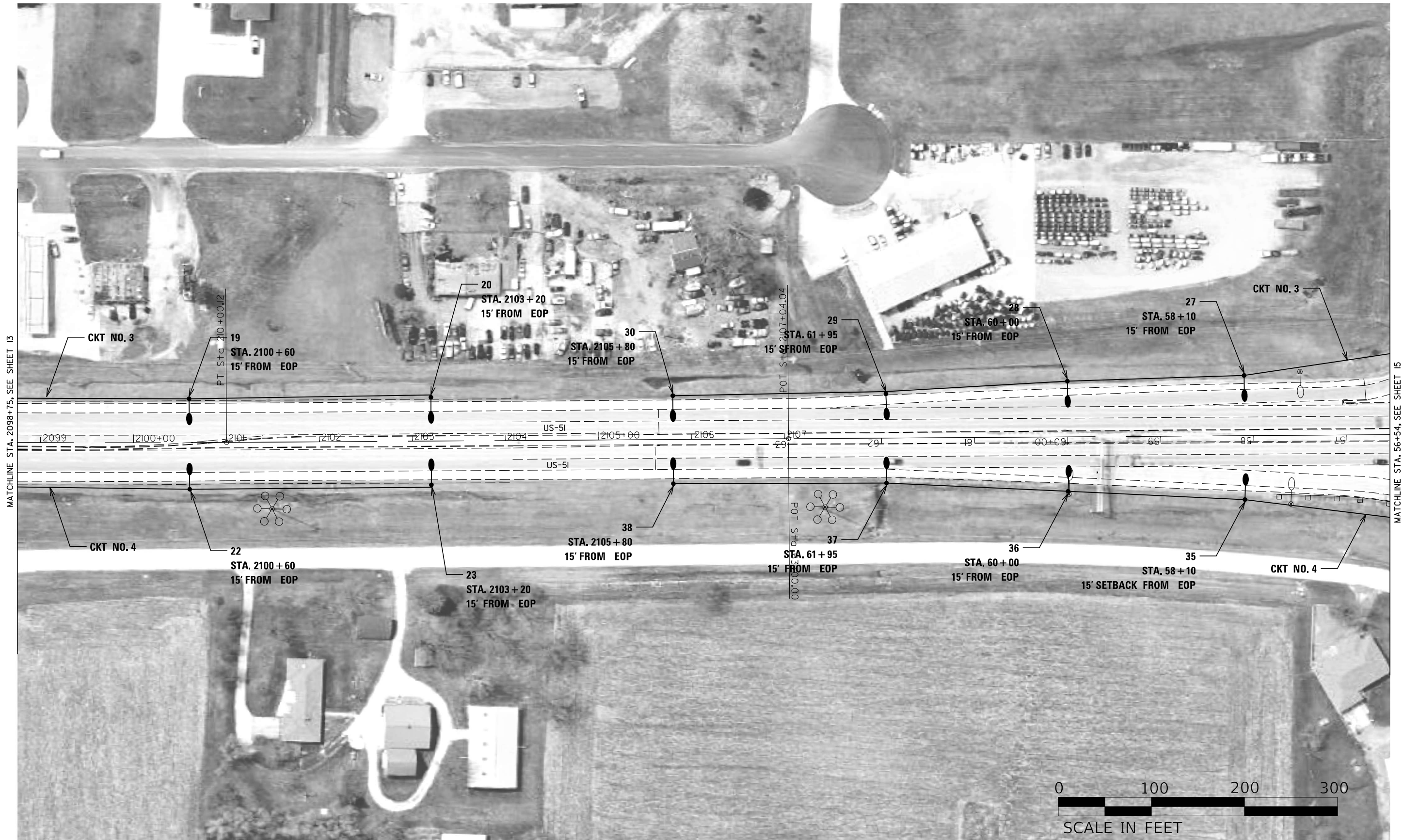
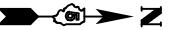
|                             |            |           |
|-----------------------------|------------|-----------|
| USER NAME = Justin.Cearlock | DESIGNED - | REVISED - |
|                             | DRAWN -    | REVISED - |
|                             | CHECKED -  | REVISED - |
|                             | DATE -     | REVISED - |
| PLOT DATE = 1/7/2025        |            |           |

STATE OF ILLINOIS  
DEPARTMENT OF TRANSPORTATION

US-51 AND I-74  
PROPOSED LIGHTING PLAN

SCALE: SHEET 2 OF 7 SHEETS STA. TO STA.

|                           |            |        |              |           |
|---------------------------|------------|--------|--------------|-----------|
| F.A.P. RTE.               | SECTION    | COUNTY | TOTAL SHEETS | SHEET NO. |
| 322                       | HMLT2025-1 | MCLEAN | 22           | 13        |
| CONTRACT NO. 70H51        |            |        |              |           |
| ILLINOIS FED. AID PROJECT |            |        |              |           |



MODEL: Default  
FILE NAME: c:\p\work\p\work\projects\1032394\DS70H51\_Light\_3.dgn

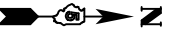
|                             |            |           |
|-----------------------------|------------|-----------|
| USER NAME = Justin.Cearlock | DESIGNED - | REVISED - |
|                             | DRAWN -    | REVISED - |
|                             | CHECKED -  | REVISED - |
| PLOT DATE = 1/6/2025        | DATE -     | REVISED - |

STATE OF ILLINOIS  
DEPARTMENT OF TRANSPORTATION

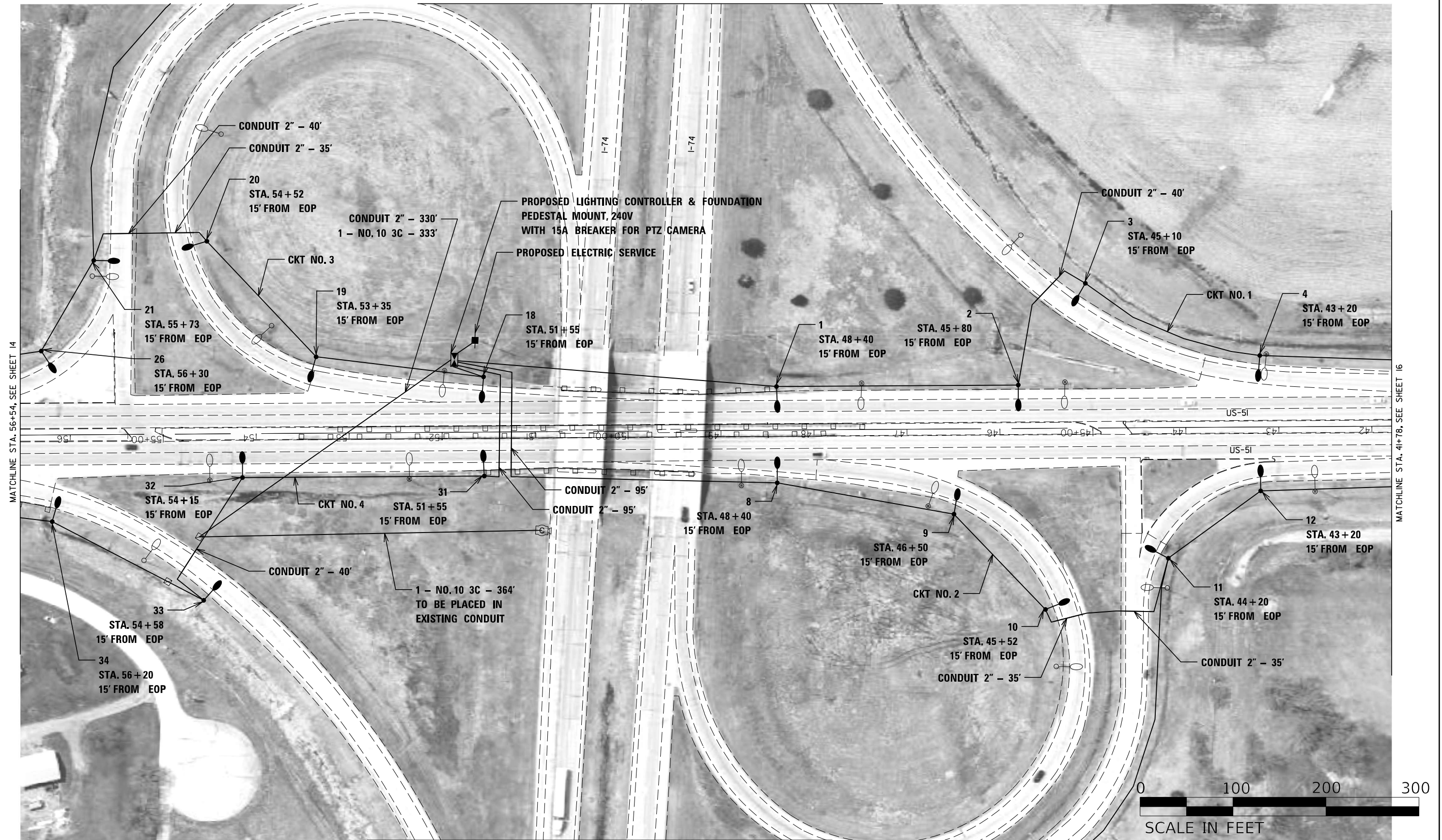
US-51 AND I-74  
PROPOSED LIGHTING PLAN

SCALE: SHEET 3 OF 7 SHEETS STA. TO STA.

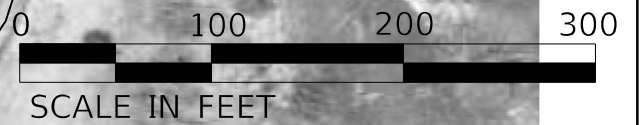
| F.A.P. RTE.               | SECTION    | COUNTY | TOTAL SHEETS | SHEET NO. |
|---------------------------|------------|--------|--------------|-----------|
| 322                       | HMLT2025-1 | MCLEAN | 22           | 14        |
| CONTRACT NO. 70H51        |            |        |              |           |
| ILLINOIS FED. AID PROJECT |            |        |              |           |



MATCHLINE, SEE SHEET 17



MATCHLINE, SEE SHEET 18



MODEL: Default  
FILE NAME: c:\p\work\p\work\projects\103239\AD570H51\_Light\_4.dgn

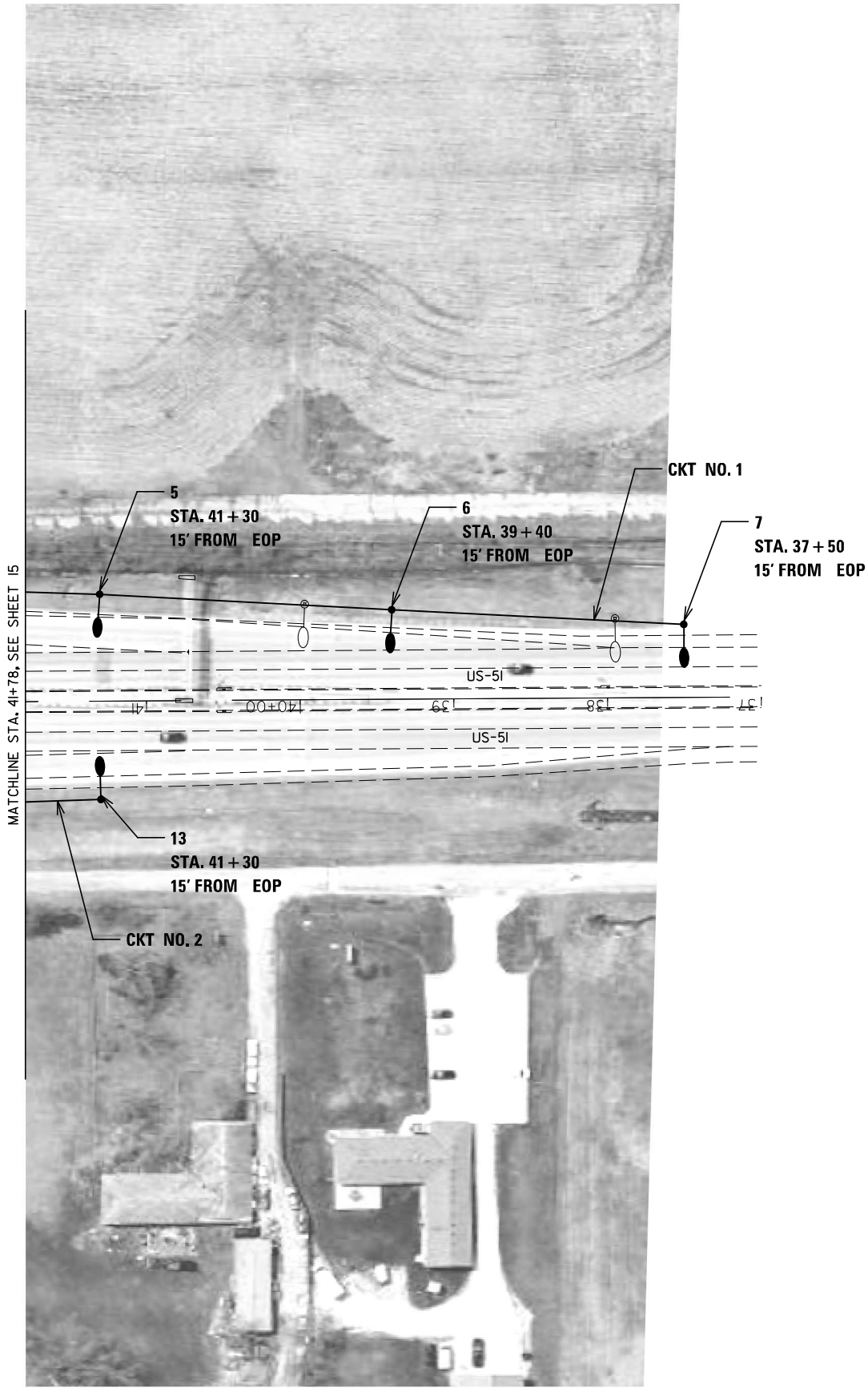
|                             |            |           |
|-----------------------------|------------|-----------|
| USER NAME = Justin.Cearlock | DESIGNED - | REVISED - |
|                             | DRAWN -    | REVISED - |
|                             | CHECKED -  | REVISED - |
| PLOT DATE = 1/9/2025        | DATE -     | REVISED - |

STATE OF ILLINOIS  
DEPARTMENT OF TRANSPORTATION

US-51 AND I-74  
PROPOSED LIGHTING PLAN

SCALE: SHEET 4 OF 7 SHEETS STA. TO STA.

| F.A.P. RTE.               | SECTION    | COUNTY | TOTAL SHEETS | SHEET NO. |
|---------------------------|------------|--------|--------------|-----------|
| 322                       | HMLT2025-1 | MCLEAN | 22           | 15        |
| CONTRACT NO. 70H51        |            |        |              |           |
| ILLINOIS FED. AID PROJECT |            |        |              |           |



MODEL: Default  
FILE NAME: c:\p\work\p\work\projects\1032394\DS70H51\_Light\_5.dgn

|                             |            |           |
|-----------------------------|------------|-----------|
| USER NAME = Justin.Cearlock | DESIGNED - | REVISED - |
|                             | DRAWN -    | REVISED - |
|                             | CHECKED -  | REVISED - |
| PLOT DATE = 1/6/2025        | DATE -     | REVISED - |

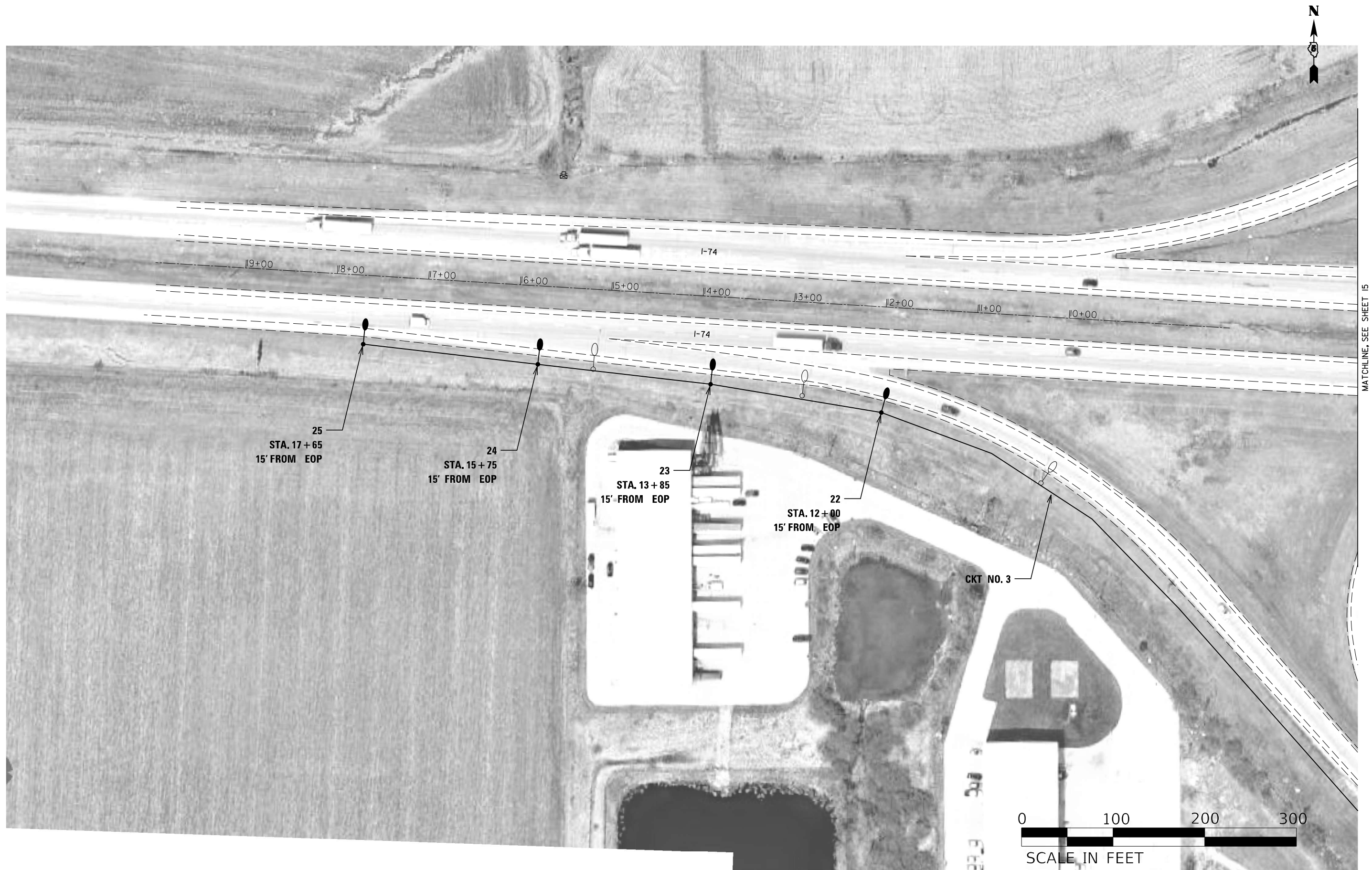
STATE OF ILLINOIS  
DEPARTMENT OF TRANSPORTATION

US-51 AND I-74  
PROPOSED LIGHTING PLAN

SCALE: SHEET 5 OF 7 SHEETS STA. TO STA.

| F.A.P. RTE.               | SECTION    | COUNTY | TOTAL SHEETS | SHEET NO. |
|---------------------------|------------|--------|--------------|-----------|
| 322                       | HMLT2025-1 | MCLEAN | 22           | 16        |
| CONTRACT NO. 70H51        |            |        |              |           |
| ILLINOIS FED. AID PROJECT |            |        |              |           |

MODEL: Default  
FILE NAME: c:\pwork\pwork\projects\1032394\DS70H51\_Light\_6.dgn



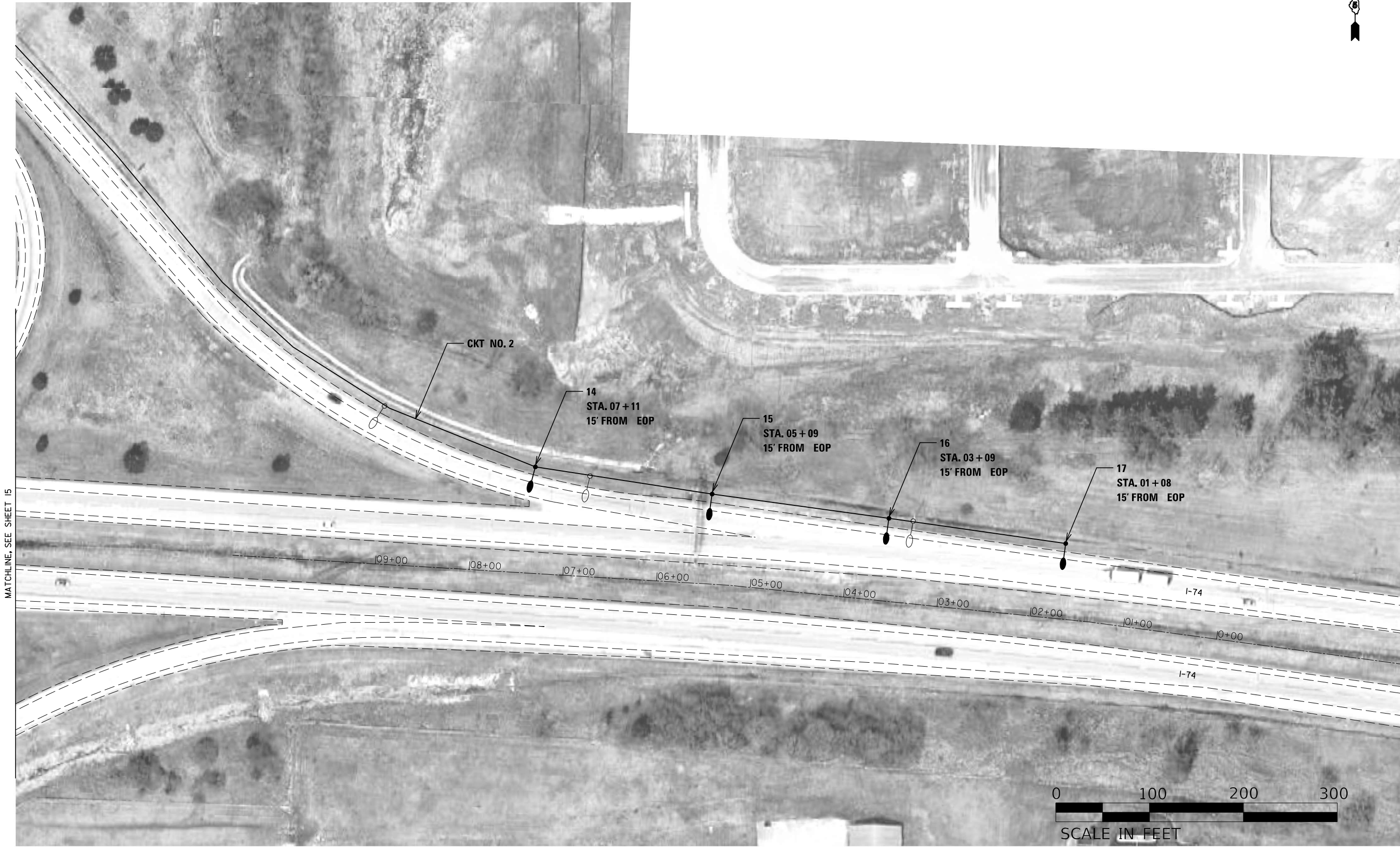
|                      |                             |            |           |
|----------------------|-----------------------------|------------|-----------|
| PLOT DATE = 1/6/2025 | USER NAME = Justin.Cearlock | DESIGNED - | REVISED - |
|                      |                             | DRAWN -    | REVISED - |
|                      |                             | CHECKED -  | REVISED - |
|                      | DATE -                      |            | REVISED - |

STATE OF ILLINOIS  
DEPARTMENT OF TRANSPORTATION

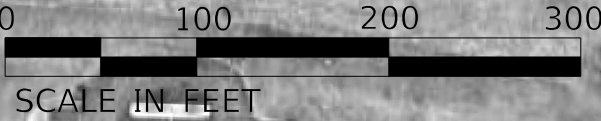
US-51 AND I-74  
PROPOSED LIGHTING PLAN

SCALE: SHEET 6 OF 7 SHEETS STA. TO STA.

|                           |            |        |              |           |
|---------------------------|------------|--------|--------------|-----------|
| F.A.P. RTE.               | SECTION    | COUNTY | TOTAL SHEETS | SHEET NO. |
| 322                       | HMLT2025-1 | MCLEAN | 22           | 17        |
| CONTRACT NO. 70H51        |            |        |              |           |
| ILLINOIS FED. AID PROJECT |            |        |              |           |



MATCHLINE, SEE SHEET 15



MODEL: Default  
FILE NAME: c:\p\work\p\work\projects\1032394\1032394\Lighting.dgn

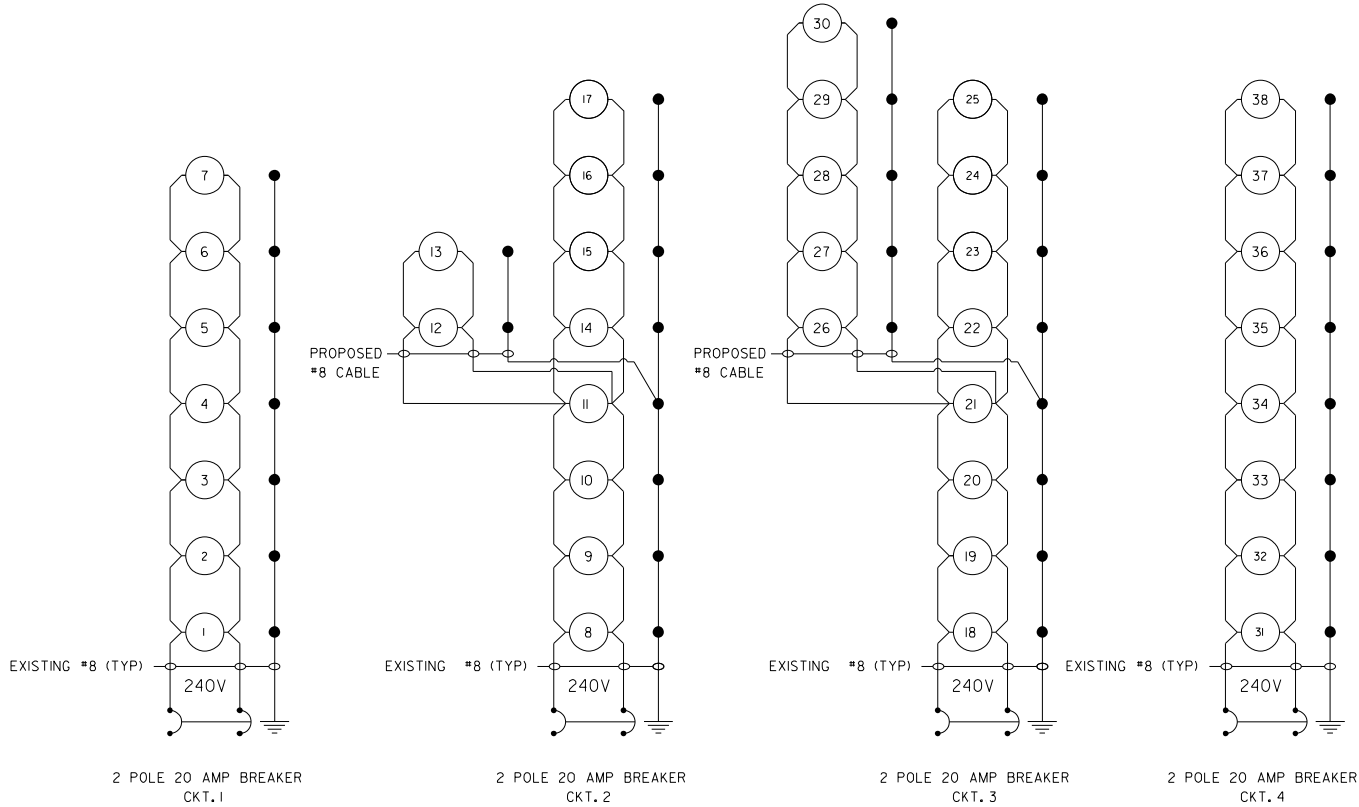
|                             |            |           |
|-----------------------------|------------|-----------|
| USER NAME = Justin.Cearlock | DESIGNED - | REVISED - |
|                             | DRAWN -    | REVISED - |
|                             | CHECKED -  | REVISED - |
| PLOT DATE = 1/6/2025        | DATE -     | REVISED - |

STATE OF ILLINOIS  
DEPARTMENT OF TRANSPORTATION

US-51 AND I-74  
PROPOSED LIGHTING PLAN

SCALE: SHEET 7 OF 7 SHEETS STA. TO STA.

|                           |                    |               |                 |              |
|---------------------------|--------------------|---------------|-----------------|--------------|
| F.A.P. RTE. 322           | SECTION HMLT2025-1 | COUNTY MCLEAN | TOTAL SHEETS 22 | SHEET NO. 18 |
| CONTRACT NO. 70H51        |                    |               |                 |              |
| ILLINOIS FED. AID PROJECT |                    |               |                 |              |



## US-51 AND I-74

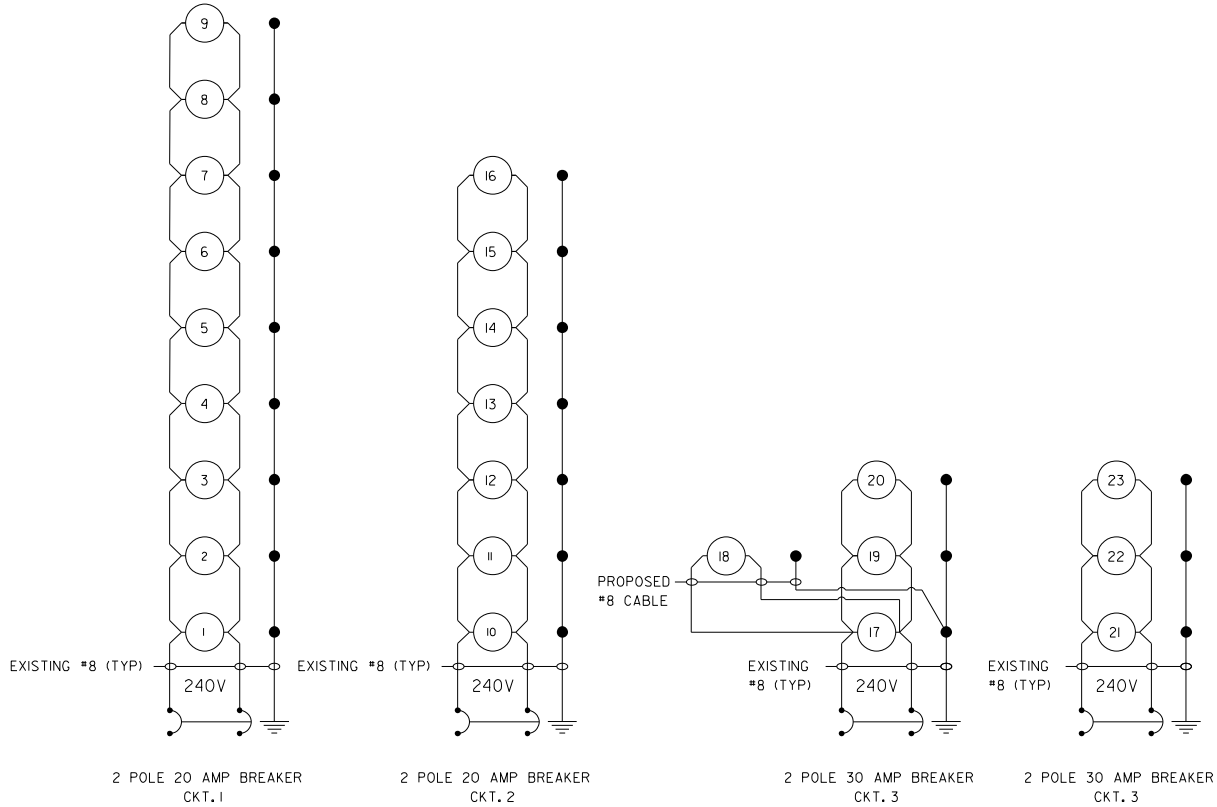
PROPOSED LIGHTING CONTROLLER,  
PEDESTAL MOUNTED, 240V, 60AMP

### LEGEND:

- (1) PROPOSED LIGHTING UNIT  
GROUND ROD

### NOTES:

1. ALL NECESSARY REVISIONS TO THE WIRING SHOWN ON THIS SHEET SHALL BE MADE AT NO ADDITIONAL COST TO THE DEPARTMENT AND TO THE SATISFACTION OF THE ENGINEER.



## US-51 AND CH-30

PROPOSED LIGHTING CONTROLLER,  
PEDESTAL MOUNTED, 240V, 60AMP

MODEL: Default  
FILE NAME: c:\p\work\p\work\project\1032394\DS70H51\_Wiring Diagram.dgn

|  |                               |              |             |   |                 |  |           |         |                    |            |                             |        |                 |              |
|--|-------------------------------|--------------|-------------|---|-----------------|--|-----------|---------|--------------------|------------|-----------------------------|--------|-----------------|--------------|
|  | USER NAME   = Justin.Cearlock | DESIGNED   - | REVISED   - | STATE OF ILLINOIS<br>DEPARTMENT OF TRANSPORTATION | WIRING DIAGRAMS |  |           |         | F.A.P.<br>RTE.     | SECTION    |                             | COUNTY | TOTAL<br>SHEETS | SHEET<br>NO. |
|  |                               | DRAWN    -   | REVISED   - |   |                 |  |           |         | 322                | HMLT2025-1 |                             | MCLEAN | 22              | 19           |
|  |                               | CHECKED   -  | REVISED   - |   |                 |  |           |         | CONTRACT NO. 70H51 |            |                             |        |                 |              |
|  | PLOT DATE   = 1/6/2025        | DATE       - | REVISED   - |   | SCALE:          |  | SHEET   1 | OF    1 | SHEETS             | STA.       | TO STA.                     |        |                 |              |
|  |                               |              |             |   |                 |  |           |         |                    |            | ILLINOIS   FED. AID PROJECT |        |                 |              |



Luminaire Performance Table

Project

|                     |                 |                |        |
|---------------------|-----------------|----------------|--------|
| Date                | Contract Number | Section Number | County |
| 10/22/24            | 70H51           | HMLT2025-1     | McLean |
| Marked Route Number |                 | Municipality   |        |
| US-51               |                 |                |        |

Roadway

|                         |                               |              |                        |              |
|-------------------------|-------------------------------|--------------|------------------------|--------------|
| Lane Width (see note 4) | Number and Direction of lanes | Median Width | Surface Classification | Q-Zero Value |
| 12                      | 3 - In One Direction          | 16           | R3                     | 0.07         |

Structure

|                 |            |                       |                      |
|-----------------|------------|-----------------------|----------------------|
| Mounting Height | Arm Length | Set-Back (see note 1) | Number of Luminaries |
| 45              | 15         | 15                    | 1                    |

Luminaire

|  |                         |                      |                  |
|--|-------------------------|----------------------|------------------|
| Description                            | Transverse Distribution | Lateral Distribution |                  |
| Roadway Luminaire Output Designation G | Type III                | Medium               |                  |
| Total Light Loss Factor (LLF)          | B-U-G Rating            | Shields              | Dimming Protocol |
| Refer to Notes 6 and 7                 | U=0                     | N/A                  | 0-10V            |

Layout

|         |               |
|---------|---------------|
| Spacing | Configuration |
| 260     | Opposite      |

Performance (see notes 5 and 6)

|   |                                     |                                     |  |
|---|-------------------------------------|-------------------------------------|--|
| Average Illuminance, $E_{AVE}$ (fc)               | Uniformity Ratio, $E_{AVE}/E_{MIN}$ |                                     |  |
| 0.6   | 3.0                                 |                                     |  |
| Average Luminance, $L_{AVE}$ (cd/m <sup>2</sup> ) | Uniformity Ratio, $L_{AVE}/L_{MIN}$ | Uniformity Ratio, $L_{MAX}/L_{MIN}$ | Veiling Luminance Ratio, $L_v/L_{AVE}$ |
| 0.8   | 3.5                                 | 6.0                                 | 0.3                                    |

Light Trespass (see notes 5 and 7)

|                               |   |   |
|-------------------------------|---|---|
| Distance to ROW (behind pole) | Max. Horizontal Illuminance at ROW, $E_H$ | Max. Vertical Illuminance at ROW, $E_v$ |
| N/A                           | N/A                                       | N/A                                     |

Notes

- Set-Back is from Edge of Pavement (white line).
- Lighting calculations shall be performed with all luminaires oriented toward and perpendicular to the roadway.
- Performance requirements shall be the minimum acceptable standards of photometric performance for the luminaire, based on the given conditions listed above.
- Lane width is the width of each **individual** lane, not to be confused with total roadway width.
- Compliance with performance criteria shall be held to one significant digit.
- Photometric calculations for roadways shall be performed with a total light loss factor of 0.7
- Light trespass calculations shall be performed with a total light loss factor of 1.0 and with horizontal calculations performed at grade and vertical calculations performed with calculation points located three feet above grade.
- Luminaire performance table is intended to define the luminaire and does not necessarily match any specific roadway geometry, mounting height, setback, or arm length.

|  |
|--|
|  |
|--|

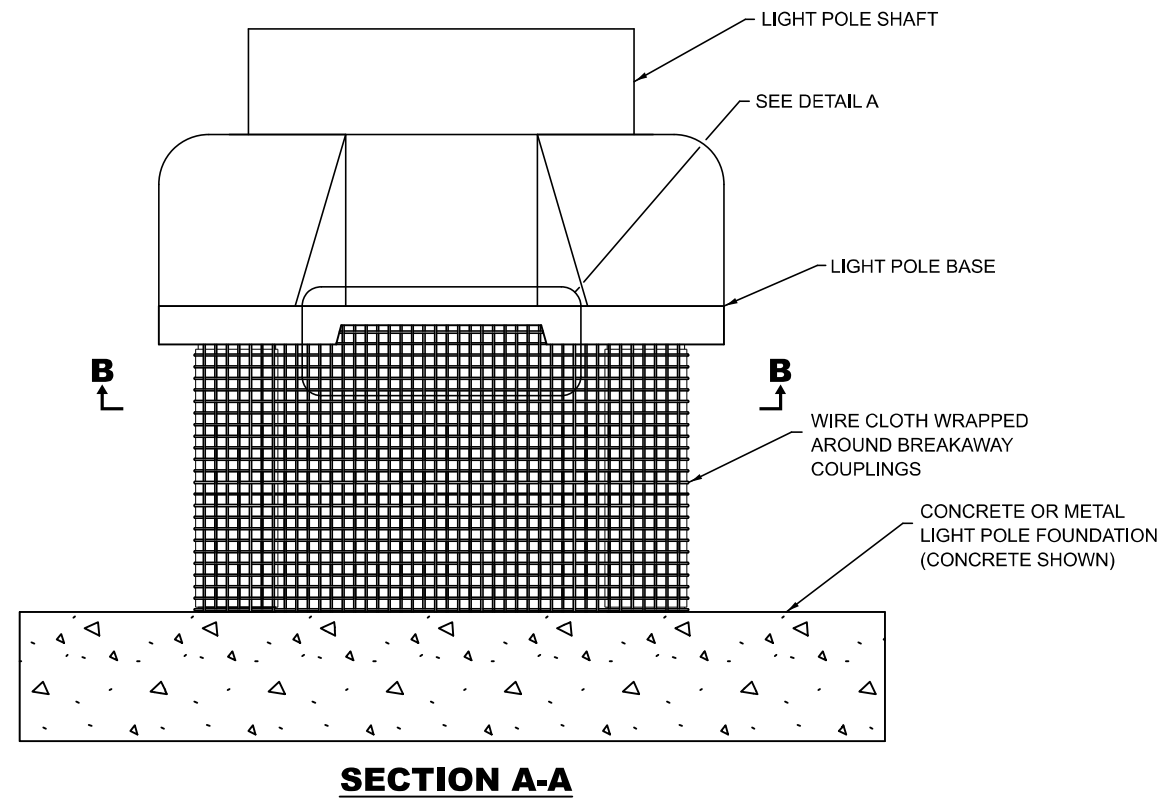
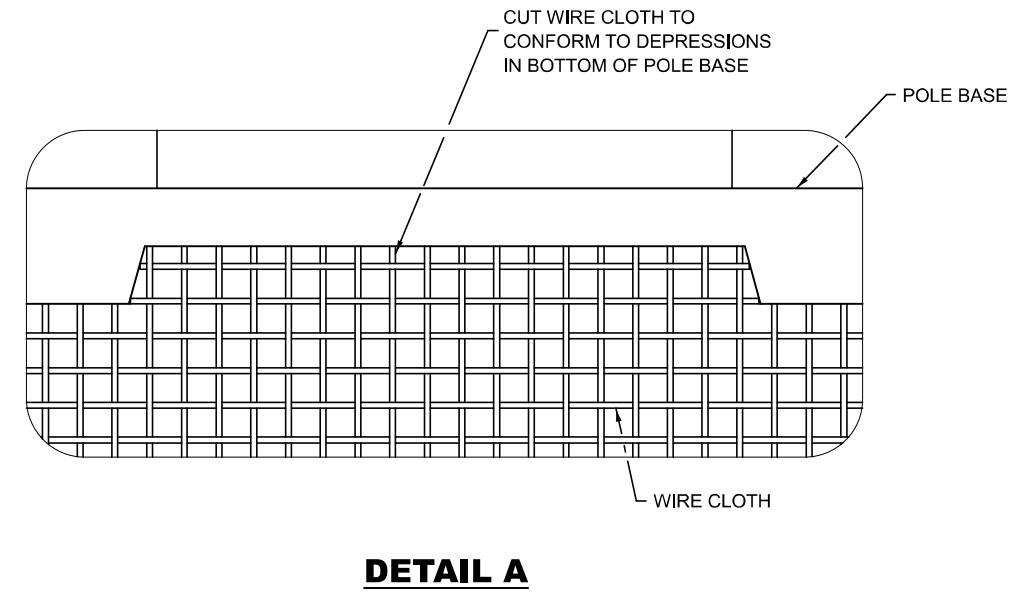
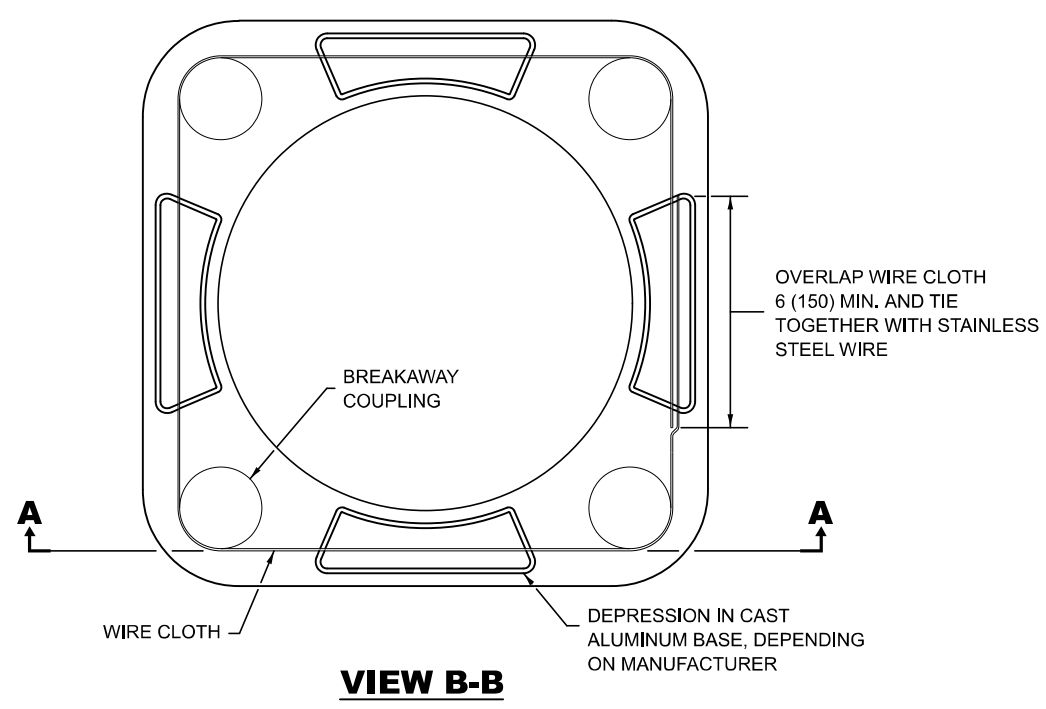
Printed 10/22/24

BDE 5630 (Draft)

MODEL: Default  
FILE NAME: c:\p\work\pwt\tdol\project\td1032394\DS70H51\_Luminaire Performance\_Table.dgn

|  |                             |            |           |   |                             |         |      |                    |            |         |                             |              |
|--|-----------------------------|------------|-----------|---|-----------------------------|---------|------|--------------------|------------|---------|-----------------------------|--------------|
|  | USER NAME = Justin.Cearlock | DESIGNED - | REVISED - | STATE OF ILLINOIS<br>DEPARTMENT OF TRANSPORTATION | LUMINAIRE PERFORMANCE TABLE |         |      | F.A.P.<br>RTE.     | SECTION    | COUNTY  | TOTAL<br>SHEETS             | SHEET<br>NO. |
|  |                             | DRAWN -    | REVISED - |   |                             |         |      | 322                | HMLT2025-1 | MCLEAN  | 22                          | 20           |
|  |                             | CHECKED -  | REVISED - |   |                             |         |      | CONTRACT NO. 70H51 |            |         |                             |              |
|  | PLOT DATE = 12/17/2024      | DATE -     | REVISED - |   | SCALE:                      | SHEET 1 | OF 1 | SHEETS             | STA.       | TO STA. | ILLINOIS   FED. AID PROJECT |              |

RODENT SHIELD FOR ALUMINUM POLE



GENERAL NOTES

WIRE CLOTH SHALL BE STAINLESS STEEL, HAVE A MAXIMUM OPENING OF 1/4 (6), AND A MINIMUM WIRE DIAMETER OF AWG NO. 16 (1.6).

ALL DIMENSIONS ARE IN INCHES (MILLIMETERS) UNLESS OTHERWISE SHOWN.

RODENT SHIELD FOR ALUMINUM POLE

MODEL: Rodent Shield (Sheet)  
FILE NAME: c:\p\work\w\id\projects\id1032394\ID570H51-Shield-Detail-Rodent\_Shield.dgn

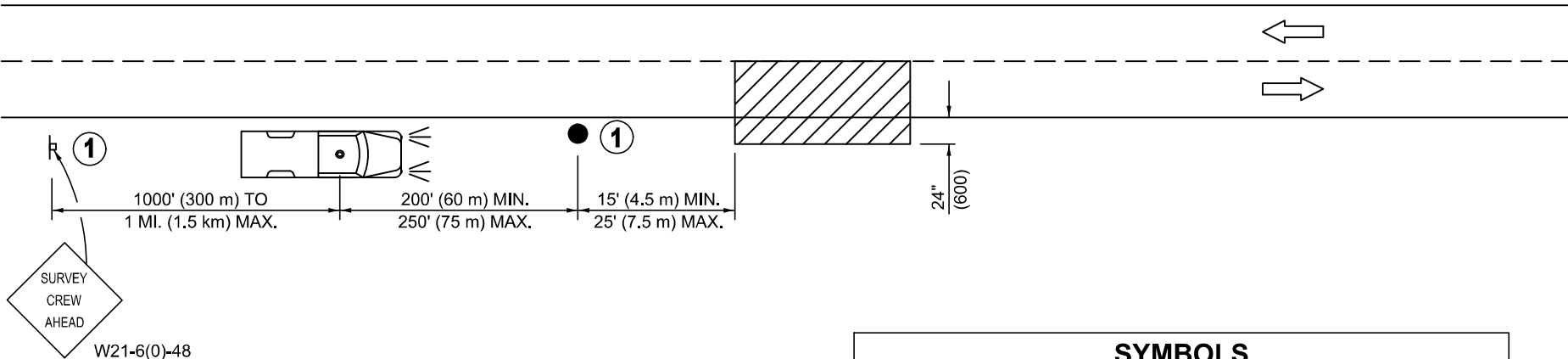
|                             |            |           |
|-----------------------------|------------|-----------|
| USER NAME = Justin.Cearlock | DESIGNED - | REVISED - |
|                             | DRAWN -    | REVISED - |
|                             | CHECKED -  | REVISED - |
| PLOT DATE = 12/17/2024      | DATE -     | REVISED - |

STATE OF ILLINOIS  
DEPARTMENT OF TRANSPORTATION

RODENT SHIELD FOR  
ALUMINUM POLE

SCALE: SHEET 1 OF 1 SHEETS STA. TO STA.

| F.A.P. RTE.               | SECTION    | COUNTY | TOTAL SHEETS | SHEET NO. |
|---------------------------|------------|--------|--------------|-----------|
| 322                       | HMLT2025-1 | MCLEAN | 22           | 21        |
| CONTRACT NO. 70H51        |            |        |              |           |
| ILLINOIS FED. AID PROJECT |            |        |              |           |



**TYPICAL APPLICATIONS**  
UTILITY OPERATIONS

**SYMBOLS**

WORK AREA

SIGN ON PORTABLE OR PERMANENT SUPPORT

TRUCK WITH FLASHING AMBER LIGHT AND DUAL EMERGENCY FLASHERS

FLAGGER WITH TRAFFIC CONTROL SIGN

**1** NOT REQUIRED FOR WORK ACTIVITIES IN OR WITHIN 2' OF TRAVELED LANE IN ONE LOCATION FOR LESS THAN 15 MINUTES (BRIEF ENCROACHMENT).

Note: All dimensions are in INCHES (millimeters) unless otherwise shown.

MODEL: 70100000 [Sheet]  
FILE NAME: c:\p\work\wdol\project\1032394\570H51-Shr-Detail\_70100000.dgn

|                             |            |                 |
|-----------------------------|------------|-----------------|
| USER NAME = Justin.Cearlock | DESIGNED - | REVISED - 11/06 |
|                             | DRAWN -    | REVISED -       |
|                             | CHECKED -  | REVISED -       |
| PLOT DATE = 12/17/2024      | DATE -     | REVISED -       |

STATE OF ILLINOIS  
DEPARTMENT OF TRANSPORTATION

NIGHT TIME INSPECTION OF ROADWAY LIGHTING

SCALE: SHEET 1 OF 1 SHEETS STA. TO STA.

| DISTRICT 5 DETAIL NO. 71000000 |            |          |                    |           |
|--------------------------------|------------|----------|--------------------|-----------|
| F.A.P. RTE.                    | SECTION    | COUNTY   | TOTAL SHEETS       | SHEET NO. |
| 322                            | HMLT2025-1 | MCCLEAN  | 22                 | 22        |
|                                |            |          | CONTRACT NO. 70H51 |           |
|                                |            | ILLINOIS | FED. AID PROJECT   |           |