

STATE OF ILLINOIS  
DEPARTMENT OF TRANSPORTATION

F.A.I RTE.	SECTION	COUNTY	TOTAL SHEETS	SHEET NO.
72	(86-9HB2)BDR,BRR	SCOTT	15	1
		ILLINOIS	CONTRACT NO. 72324	

D-96-037-24

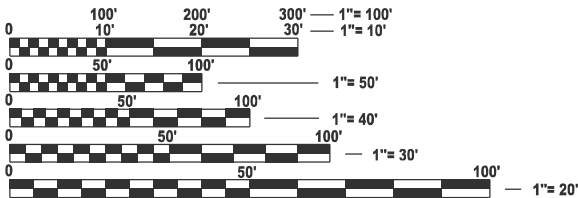
FOR INDEX OF SHEETS, SEE SHEET NO. 2

FOR HIGHWAY STANDARDS, SEE SHEET NO. 2

PROPOSED  
HIGHWAY PLANS

FAI ROUTE 72 (I-72)  
SECTION (86-9HB2)BDR,BRR  
PROJECT NHPP-1EHD(754)  
BRIDGE DECK OVERLAY, BRIDGE REPAIR  
SCOTT COUNTY

C-96-057-24

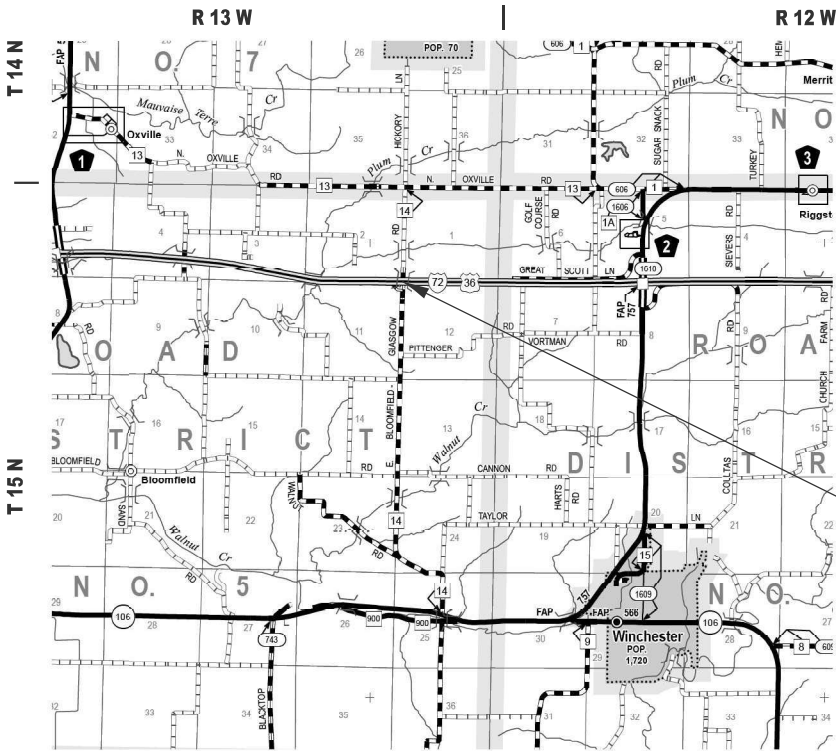


FULL SIZE PLANS HAVE BEEN PREPARED USING STANDARD  
ENGINEERING SCALES. REDUCED SIZED PLANS WILL NOT  
CONFORM TO STANDARD SCALES. IN MAKING MEASUREMENTS  
ON REDUCED PLANS, THE ABOVE SCALES MAY BE USED.

J.U.L.I.E.  
JOINT UTILITY LOCATION INFORMATION FOR EXCAVATION  
1-800-892-0123  
OR 811

PROJECT ENGINEER: BRIAN LANINGHAM (217) 782-6990  
PROJECT MANAGER: RENE CABRERA (217) 558-5140

CONTRACT NO. 72324



INDEX OF SHEETS

1	COVER
2	GENERAL NOTES
3 - 4	SUMMARY OF QUANTITIES
5	PLAN SHEET / SCHEDULES
6	SIGNING SHEET
7	BUTT JOINT DETAIL
8 - 15	BRIDGE PLANS

GENERAL NOTES

SYNTHETIC FIBERS ARE NOT REQUIRED IN THE BRIDGE DECK MICROSILICA CONCRETE OVERLAY.

HIGHWAY STANDARDS

000001-08	STANDARD SYMBOLS, ABBREVIATIONS AND PATTERNS
001001-02	AREAS OF REINFORCEMENT BARS
001006	DECIMAL OF AN INCH AND OF A FOOT
701101-05	OFF-ROAD OPERATIONS, MULTILANE, 15 FT TO 24" FROM PAVEMENT EDGE
701106-02	OFF-ROAD OPERATIONS, MULTILANE, MORE THAN 15 FT AWAY
701400-12	APPROACH TO LANE CLOSURE, FREEWAY / EXPRESSWAY
701401-13	LANE CLOSURE, FREEWAY / EXPRESSWAY
701901-10	TRAFFIC CONTROL DEVICES
B.L.R., 21-9	TYPICAL APPLICATION OF TRAFFIC CONTROL DEVICES FOR CONSTRUCTION ON RURAL LOCAL HIGHWAYS

APPLICATION RATES

BITUMINOUS MATERIALS - TACK	0.05 LB / SQ FT (MILLED SURFACE)
-----------------------------	----------------------------------

COMMITMENTS

NONE

BRIDGE APPROACH APRONS	
MIXTURE USE(S):	INCIDENTAL SURFACING
PG:	PG 64-22
DESIGN AIR VOIDS:	4.0% @ N50
MIXTURE COMPOSITION	IL - 9.5
FRICTION AGGREGATE:	MIX "C"
MIXTURE WEIGHT	112 LB/SQ IN
QUALITY MANAGEMENT	QC/QA
SUBLOT SIZE:	N/A
MTD REQUIRED	NO


STATE OF ILLINOIS  
DEPARTMENT OF TRANSPORTATION  
DIVISION OF HIGHWAYS  
DISTRICT 6

EXAMINED

June 5,

20

25




ENGINEER OF OPERATIONS

EXAMINED

June 10,

20

25




ENGINEER OF PROJECT IMPLEMENTATION

EXAMINED

June 10,

20

25



ENGINEER OF PROGRAM DEVELOPMENT

MODEL: General Notes  
FILE NAME: c:\pwworking\dotcom\ballot\098771\0672324-ill-gennote.dgn

	USER NAME = thomas.cox	DESIGNED -	REVISED -	STATE OF ILLINOIS DEPARTMENT OF TRANSPORTATION	GENERAL NOTES FAI 72 (I-72)			FAI RTE.	SECTION	COUNTY	TOTAL SHEETS	SHEET NO.
		DRAWN -	REVISED -					72	(86-9HB2)BDR,BRR	SCOTT	15	2
		CHECKED -	REVISED -					CONTRACT NO. 72324				
	PLOT DATE = 6/16/2025	DATE -	REVISED -					ILLINOIS   FED. AID PROJECT				
SCALE:		SHEET 1	OF 1	SHEETS	STA.	TO STA.						

MODEL: SQQ [Sheet] - 1  
FILE NAME: c:\pw\_work\pwid\michael.l.crow@illinois.gov\0987717\0612324-shh-SQQ.dgn

				6-02047-0000
				NHPP FUNDING 90% FEDERAL 10% STATE
CODE NO.	ITEM	UNIT	TOTAL QUANTITY	SN 086-0029
				0047
				RURAL
40600982	HOT-MIX ASPHALT SURFACE REMOVAL - BUTT JOINT	SQ YD	68	68
40800029	BITUMINOUS MATERIALS (TACK COAT)	POUND	31	31
40800050	INCIDENTAL HOT-MIX ASPHALT SURFACING	TON	10	10
50102400	CONCRETE REMOVAL	CU YD	5.1	5.1
50157300	PROTECTIVE SHIELD	SQ YD	267	267
50300225	CONCRETE STRUCTURES	CU YD	5.8	5.8
50300255	CONCRETE SUPERSTRUCTURE	CU YD	3.5	3.5
50300260	BRIDGE DECK GROOVING	SQ YD	702	702
50300300	PROTECTIVE COAT	SQ YD	767	767
50800205	REINFORCEMENT BARS, EPOXY COATED	POUND	1,140	1,140
50800515	BAR SPLICERS	EACH	8	8
52000110	PREFORMED JOINT STRIP SEAL	FOOT	58	58
67000400	ENGINEER'S FIELD OFFICE, TYPE A	CAL MO	6	6
67100100	MOBILIZATION	L SUM	1	1

\* - INDICATES PAY ITEM REQUIRES A SPECIAL PROVISION

REV - MS

	USER NAME = Michael.L.Crow	DESIGNED -	REVISED -	STATE OF ILLINOIS DEPARTMENT OF TRANSPORTATION	SUMMARY OF QUANTITIES FAI 72 (I-72)			FAI RTE.	SECTION	COUNTY	TOTAL SHEETS	SHEET NO.
		DRAWN -	REVISED -					72	(86-9HB2)BDR,BRR	SCOTT	15	3
		CHECKED -	REVISED -					CONTRACT NO. 72324				
	PLOT DATE = 6/27/2025	DATE -	REVISED -		SCALE:	SHEET 1	OF 2 SHEETS	STA.	TO STA.	ILLINOIS   FED. AID PROJECT		

MODEL: SOQ [Sheet] - 2  
FILE NAME: c:\pw\work\pwdot\michael.l.crow@illinois.gov\0987717D672324-sh1-SOQ.dgn

				6-02047-0000
				NHPP FUNDING 90% FEDERAL 10% STATE
CODE NO.	ITEM	UNIT	TOTAL QUANTITY	SN 086-0029
				0047
				RURAL
70100800	TRAFFIC CONTROL AND PROTECTION, STANDARD 701401	L SUM	1	1
70107025	CHANGEABLE MESSAGE SIGN	CAL DA	30	30
*	X0325748	ACRYLIC COATING	SQ YD	243
*	X0325749	FIBER WRAP	SQ FT	486
*	X5060704	CLEANING AND PAINTING EXPOSED REBAR	SQ FT	15.4
*	X7011800	TRAFFIC CONTROL AND PROTECTION, STANDARD BLR 21	L SUM	1
*	Z0001800	APPROACH SLAB REPAIR (PARTIAL DEPTH)	SQ YD	5
*	Z0004556	HOT-MIX ASPHALT SURFACE REMOVAL (DECK)	SQ YD	759
*	Z0012130	BRIDGE DECK SCARIFICATION 3/4"	SQ YD	759
*	Z0012164	BRIDGE DECK MICROSILICA CONCRETE OVERLAY 2 1/2"	SQ YD	759
	Z0012754	STRUCTURAL REPAIR OF CONCRETE (DEPTH EQUAL TO OR LESS THAN 5")	SQ FT	142
*	Z0016002	DECK SLAB REPAIR (FULL DEPTH, TYPE II)	SQ YD	5
*	Z0041895	POLYMER CONCRETE	CU FT	3.4
*	Z0043800	PRECAST PRESTRESSED CONCRETE I-BEAM REPAIR	SQ FT	56

\* - INDICATES PAY ITEM REQUIRES A SPECIAL PROVISION

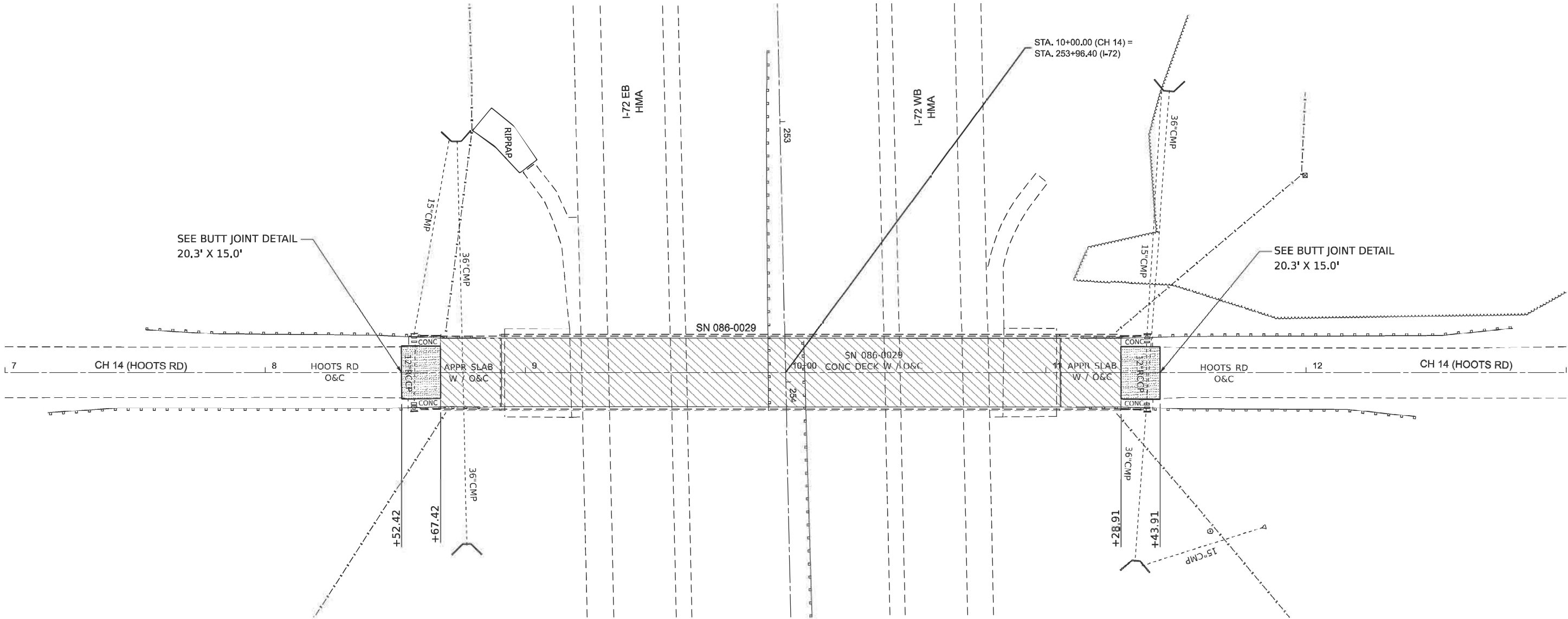
REV - MS

USER NAME = Michael.L.Crow	DESIGNED -	REVISED -	STATE OF ILLINOIS DEPARTMENT OF TRANSPORTATION	SUMMARY OF QUANTITIES FAI 72 (72)				F.A.I RTE.	SECTION	COUNTY	TOTAL SHEETS	SHEET NO.
	DRAWN -	REVISED -						72	(86-9HB2)BDR,BRR	SCOTT	15	4
	CHECKED -	REVISED -		CONTRACT NO. 72324								
PLOTDATE = 6/27/2025	DATE -	REVISED -		SCALE:	SHEET 2	OF 2	SHEETS	STA.	TO STA.	ILLINOIS   FED. AID PROJECT		

LEGEND

- PR HOT-MIX ASPHALT SURFACE REMOVAL - BUTT JOINT  
PR INCIDENTAL HOT-MIX ASPHALT SURFACING

- PR HYDROSCARIFICATION WITH  
MICROSILICA OVERLAY (SEE BRIDGE PLANS)



ROADWAY PAVING - SCHEDULE										
STATION	TO	STATION	LOCATION	DISTANCE	WIDTH	AREA	40600982	NO. OF APPS.	40800029	40800050
							HOT-MIX ASPHALT SURFACE REMOVAL - BUTT JOINT		BITUMINOUS MATERIALS (TACK COAT)	INCIDENTAL HOT-MIX ASPHALT SURFACING
									RESURFACING DEPTH = 2.75"	
				FOOT	FOOT	SQ FT	SQ YD		MILLED SURFACE	POUND
SN 086-0029										
8+52.42	-	8+67.42	CH 14 (HOOTS RD)	15.00	20.3	304.5	33.8	1	15.2	5.2
BRIDGE OMISSION										
11+28.91	-	11+43.91	CH 14 (HOOTS RD)	15.00	20.3	304.5	33.8	1	15.2	5.2
SUB-TOTAL =							67.7		15.2	10.4
TOTALS							68		30.4	10

REV - MS

MODEL: HOOTS RD - Plan 1 [Sheet]  
FILE NAME: c:\pwworkspace\carrollj\087717\0672324-shr-plan.dgn

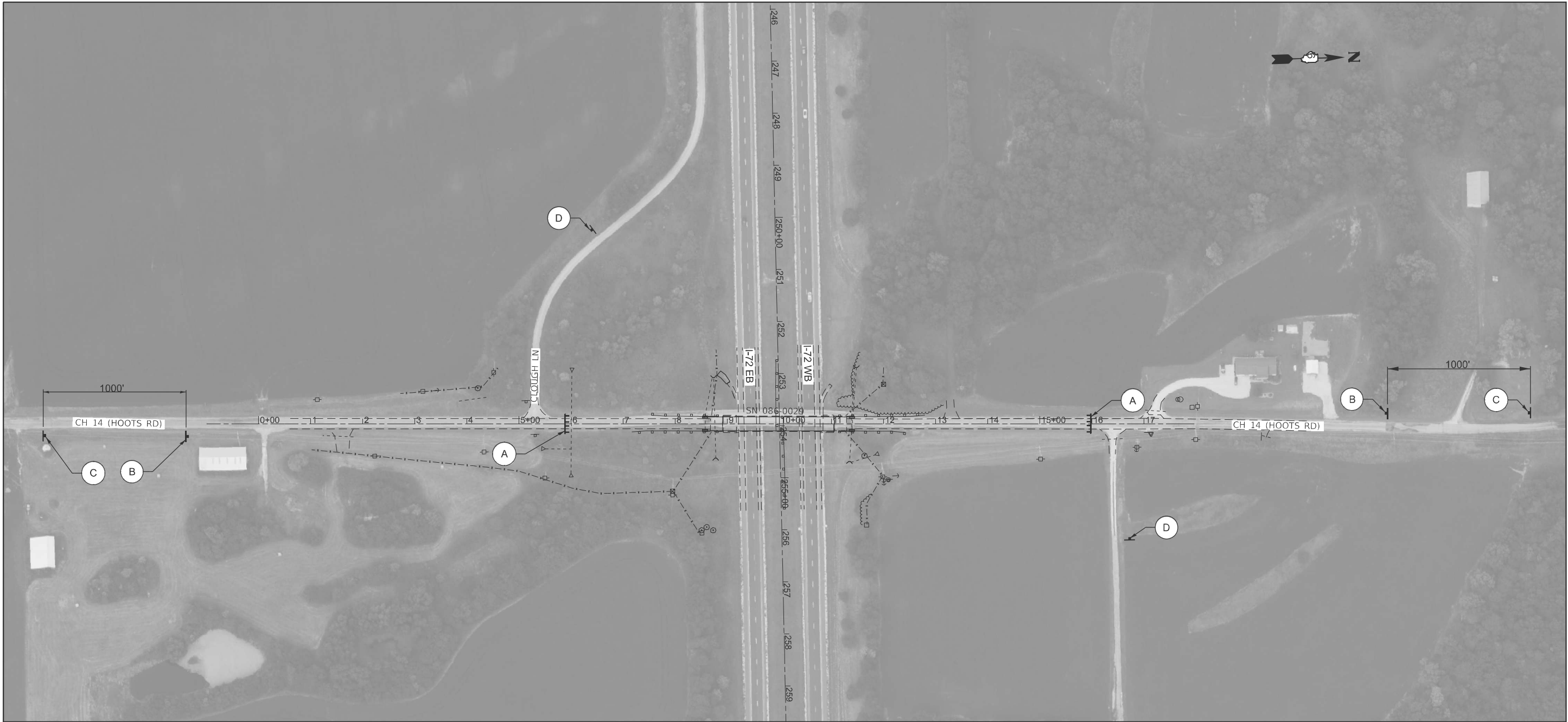
USER NAME = Michael.L.Crow	DESIGNED -	REVISED -
	DRAWN -	REVISED -
	CHECKED -	REVISED -
PLOT DATE = 6/25/2025	DATE -	REVISED -

STATE OF ILLINOIS  
DEPARTMENT OF TRANSPORTATION

PLAN SHEET  
FAI 72 (I-72)

SCALE: 1"=20' SHEET 1 OF 1 SHEETS STA. 7+00.00 TO STA. 13+00.00

F.A.I RTE	SECTION	COUNTY	TOTAL SHEETS	SHEET NO.
72	(86-9HB2)BDR,BRR	SCOTT	15	5
CONTRACT NO. 72324				
ILLINOIS FED. AID PROJECT				



GENERAL NOTES

- 1) ALL SIGNS SHALL BE FURNISHED, ERECTED, AND MAINTAINED BY THE CONTRACTOR.
- 2) SUGGESTED SIGNING PLAN. SEE HIGHWAY STANDARD BLR-21 FOR MINIMUM REQUIRED SETUP.

SIGNAGE LEGEND

**A** — TYPE III BARRICADES WITH R11-2(W) - 48"x30" AND FLASHING BI-DIRECTIONAL LIGHTS 2 EACH

**B** — W20-3(O) - 48"x48" WITH STEADY BURNING BI-DIRECTIONAL LIGHTS 2 EACH

**C** — W20-3(O) - 48"x48" WITH STEADY BURNING BI-DIRECTIONAL LIGHTS 2 EACH

**D** — W20-3(O) - 48"x48" WITH STEADY BURNING BI-DIRECTIONAL LIGHTS WITH M5-1L(O) - 2115 2 EACH

**ROAD CLOSED**

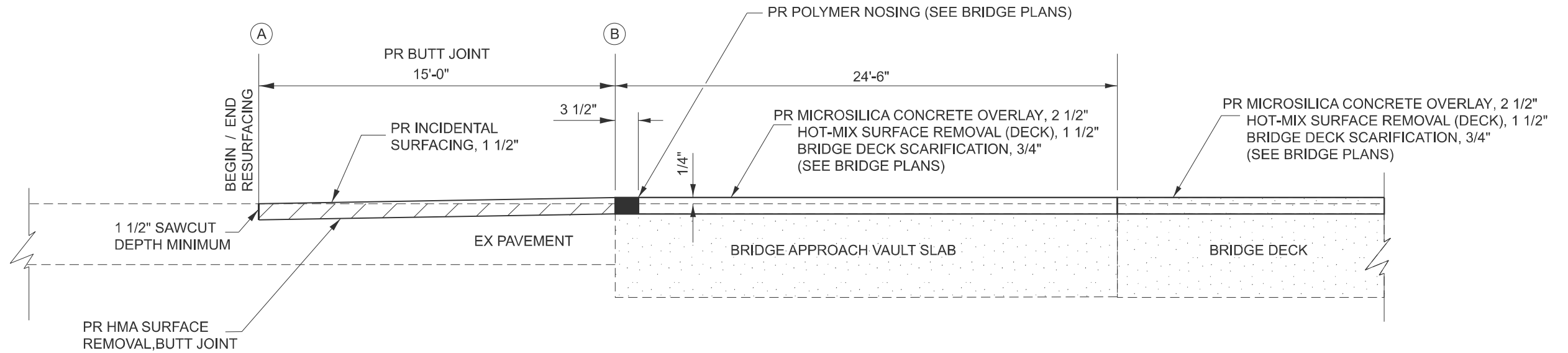
**ROAD CLOSED 500 FT**

**ROAD CLOSED AHEAD**

**ROAD CLOSED AHEAD**

MODEL: HOOTS\_RD - Plan 1 [Sheet]  
FILE NAME: c:\p\work\hoo\caraballo\0087717\0672324-sh.dgn

	USER NAME   = thomas.cox	DESIGNED   -	REVISED   -	STATE OF ILLINOIS DEPARTMENT OF TRANSPORTATION	ROAD CLOSURE PLAN CH 14 (HOOTS RD)				F.A.I RTE.	SECTION	COUNTY	TOTAL SHEETS	SHEET NO.				
		DRAWN    -	REVISED   -   ROAD CLOSURE PLAN						72	(86-9HB2)BDR,BRR	SCOTT	15	6				
		CHECKED   -	REVISED   -   CH 14 (HOOTS RD)						CONTRACT NO. 72324								
	PLOT DATE   = 6/16/2025	DATE       -	REVISED   -						SCALE: 1"=100'				SHEET 1       OF   1       SHEETS   STA. -4+90.00       TO STA. 25+10.00				
	ILLINOIS   FED. AID PROJECT																



### HMA SURFACE REMOVAL - BUTT JOINT

A	B	NOTES
STA. 8+52.42	STA. 8+67.42	BEGIN RESURFACING CH 14
STA. 11+43.91	STA. 11+28.91	END RESURFACING CH 14

MODEL: Butt Joint Detail (Sheet) - 1  
FILE NAME: c:\p\work\p\work\caraballo\087717\0672324-sht-Details.dgn

USER NAME	= frank.caraballo	DESIGNED	-	REVISED	-
		DRAWN	-	REVISED	-
		CHECKED	-	REVISED	-
PLOT DATE	= 6/26/2025	DATE	-	REVISED	-

STATE OF ILLINOIS  
DEPARTMENT OF TRANSPORTATION

BUTT JOINT DETAIL  
FAI 72 (I-72)

SCALE: SHEET 1 OF 1 SHEETS STA. TO STA.

F.A.I RTE.	SECTION	COUNTY	TOTAL SHEETS	SHEET NO.
72	(86-9HB2)BDR,BRR	SCOTT	15	7
CONTRACT NO. 72324				
ILLINOIS FED. AID PROJECT				



GENERAL NOTES

Plan dimensions and details relative to the existing structure have been taken from existing plans and are subject to nominal construction variations. The Contractor shall field verify existing dimensions and details affecting new construction and make necessary approved adjustments prior to construction or ordering of materials. Such variations shall not be cause for additional compensation for a change in scope of the work, however, the Contractor will be paid for the quantity actually furnished at the unit price bid for the work.

Reinforcement bars designated (E) shall be epoxy coated.

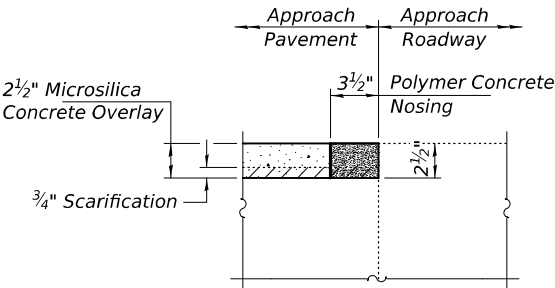
Existing reinforcement bars extending into the removal area shall be cleaned, straightened and incorporated into the new construction. Any reinforcement bars that are damaged during concrete removal shall be replaced with an approved bar splicer or anchorage system at the contractor's expense.

The Contractor shall use extreme care during concrete removal so as not to damage the PPC I-Beam.

Areas of deck repairs shown are estimated.

The Engineer shall show actual locations and size of deck repairs on As-built Plans.

Joint openings shall be adjusted according to Article 520.04 of the Std. Specs. when the deck is poured at an ambient temperature other than 50° F.



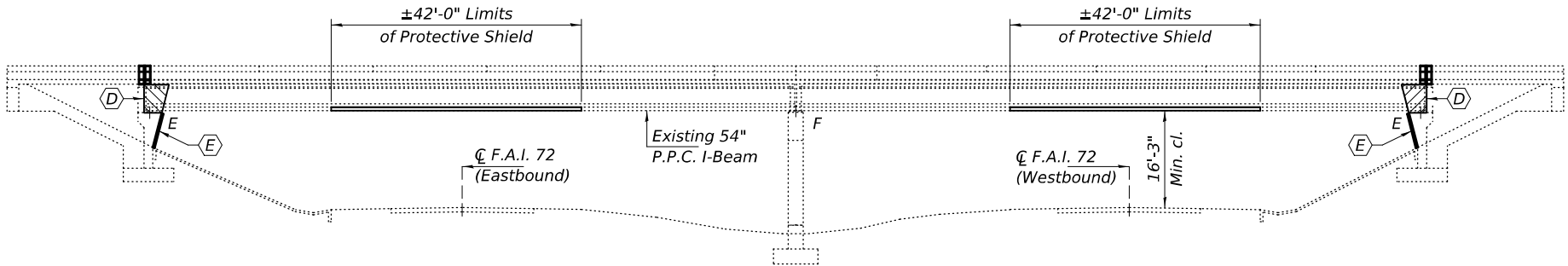
POLYMER CONCRETE NOSING DETAIL

TOTAL BILL OF MATERIAL

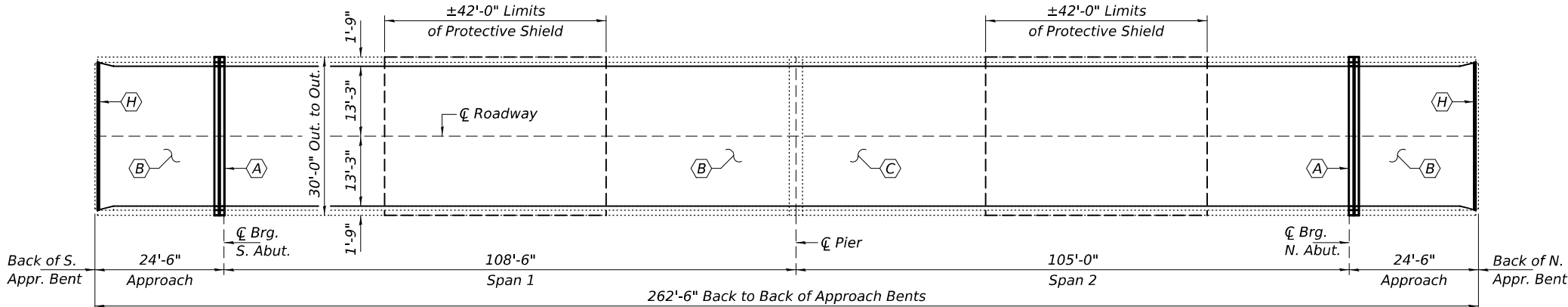
ITEM	UNIT	QUANTITY
Concrete Removal	Cu. Yd.	5.1
Concrete Structures	Cu. Yd.	5.8
Concrete Superstructure	Cu. Yd.	3.5
Reinforcement Bars, Epoxy Coated	Pound	1140
Preformed Joint Strip Seal	Foot	58
Hot-Mix Asphalt Surface Removal (Deck)	Sq. Yd.	759
Bridge Deck Scarification, 3/4"	Sq. Yd.	759
Bridge Deck Microsilica Concrete Overlay, 2 1/2"	Sq. Yd.	759
Bridge Deck Grooving	Sq. Yd.	702
P.P.C. I-Beam Repair	Sq. Ft.	56.1
Fiber Wrap	Sq. Ft.	486
Acrylic Coating	Sq. Yd.	243
Cleaning and Painting Exposed Rebar	Sq. Ft.	15.4
Polymer Concrete	Cu. Ft.	3.4
Structural Repair of Concrete (Depth ≤ 5")	Sq. Ft.	142
Protective Shield	Sq. Yd.	267
Protective Coat	Sq. Yd.	767
* Approach Slab Repair (Partial Depth)	Sq. Yd.	5
** Deck Slab Repair (Full Depth, Type II)	Sq. Yd.	5

\* Applied on new concrete and overlay only.

\*\* Quantity is estimated. Location and size of patches to be determined in the field by the Engineer.

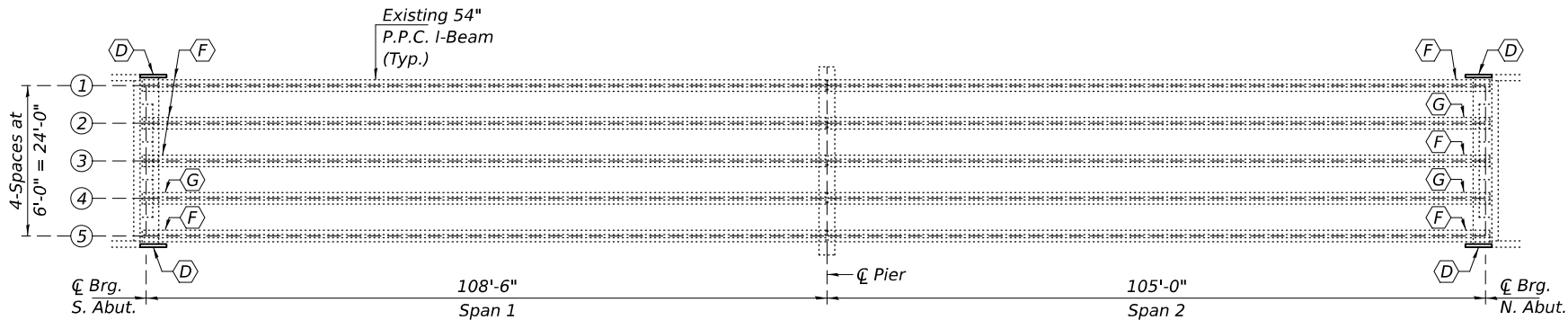


ELEVATION



PLAN

- (A) - Remove & Replace Expansion Joint (Partial Depth)
- (B) - Bridge Deck Scarification, 3/4" & Microsilica Concrete Overlay, 2 1/2"
- (C) - Bridge Deck Patching (See sheet 8 of 8.)
- (D) - Remove Abutment Bearing Seat Wings. (See sheet 6 of 8.)
- (E) - Install Rebar Mat and pour new concrete abutment faces. (See sheets 6 & 7 of 8.)
- (F) - F.R.P. Beam End Repair Type 1 (See sheet 5 of 8.)
- (G) - F.R.P. Beam End Repair Type 2 (See sheet 5 of 8.)
- (H) - Polymer Concrete Nosing (See Detail this sheet.)



FRAMING PLAN



EXPIRES 11-30-2026

DESIGNED -	Stephen M. Ryan
CHECKED -	Jeffrey S. Burke
DRAWN -	STEFFEN
CHECKED -	SMR JSB

EXAMINED	
PASSED	

DATE -	AUGUST 14, 2025
REVISED -	
REVISED -	

STATE OF ILLINOIS  
DEPARTMENT OF TRANSPORTATION

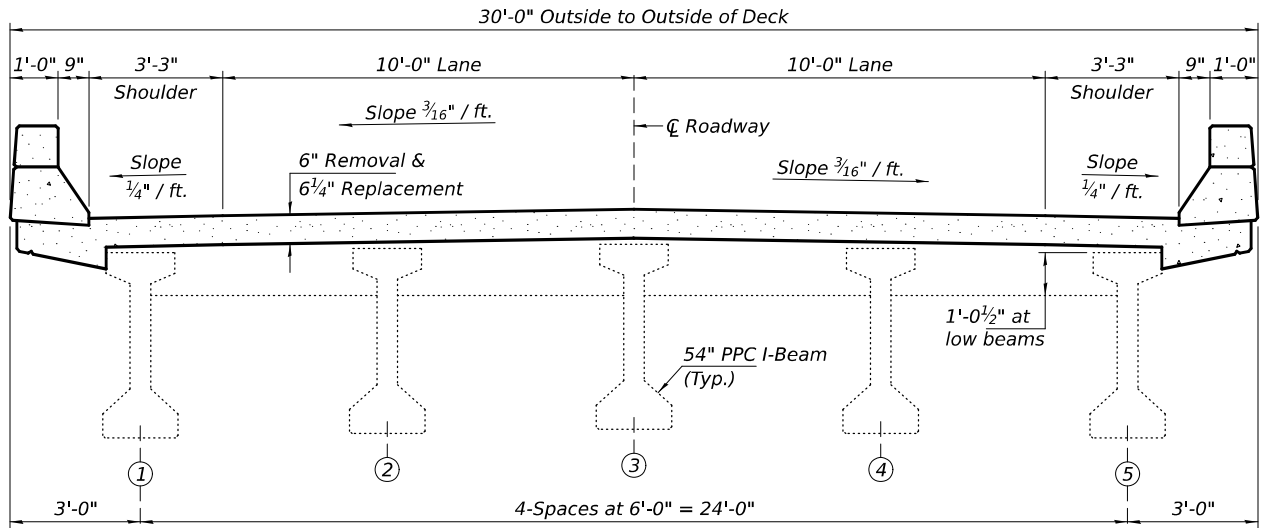
GENERAL PLAN AND ELEVATION  
CH 14 OVER F.A.I. 72  
SN 086-0029

SHEET 1 OF 8 SHEETS

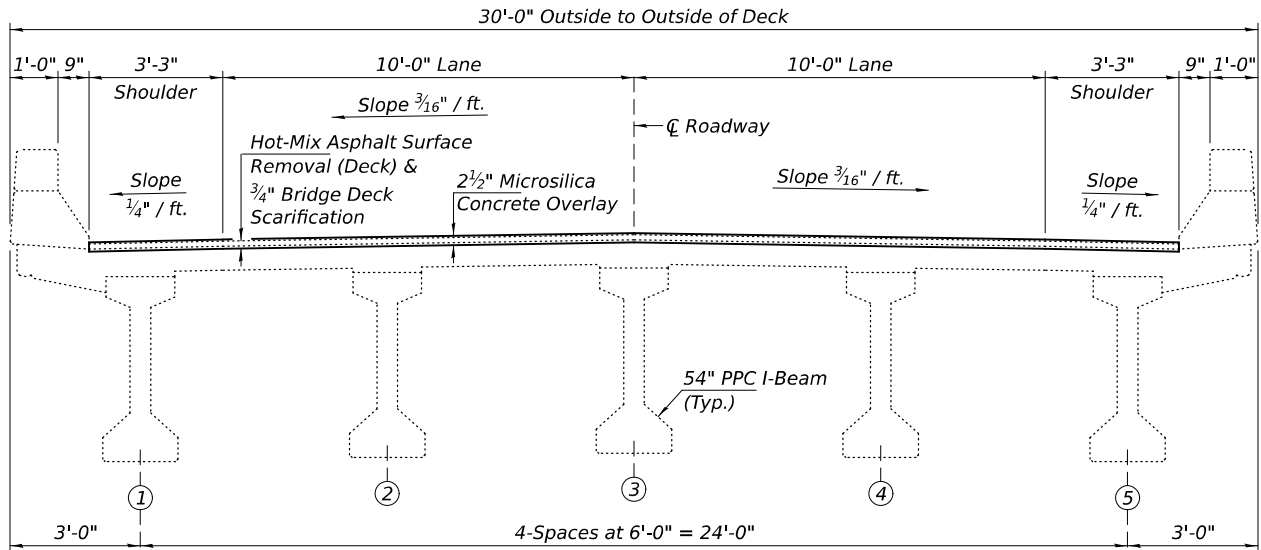
F.A.I. RTE.	SECTION	COUNTY	TOTAL SHEETS	SHEET NO.
72	(86-9HB2)BDR,BRR	SCOTT	15	8
CONTRACT NO. 72324				
ILLINOIS FED. AID PROJECT				



MODEL: 72324-009  
FILE NAME: pw:///idiot-pw.bentley.com:FWIDOT/Documents/IDOT O ces/Bureau of Bridges and Structures/0860029/CADDData/Structures/0860029.dgn




**CROSS SECTION AT ABUTMENTS**  
(Looking North)



**CROSS SECTION AT MIDSPAN**  
(Looking North)

DESIGNED -	SMR
CHECKED -	JSB
DRAWN -	STEFFEN
CHECKED -	SMR JSB

EXAMINED	
PASSED	ENGINEER OF BRIDGES AND STRUCTURES

DATE -	AUGUST 14, 2025
REVISED -	
REVISED -	

**STATE OF ILLINOIS**  
**DEPARTMENT OF TRANSPORTATION**

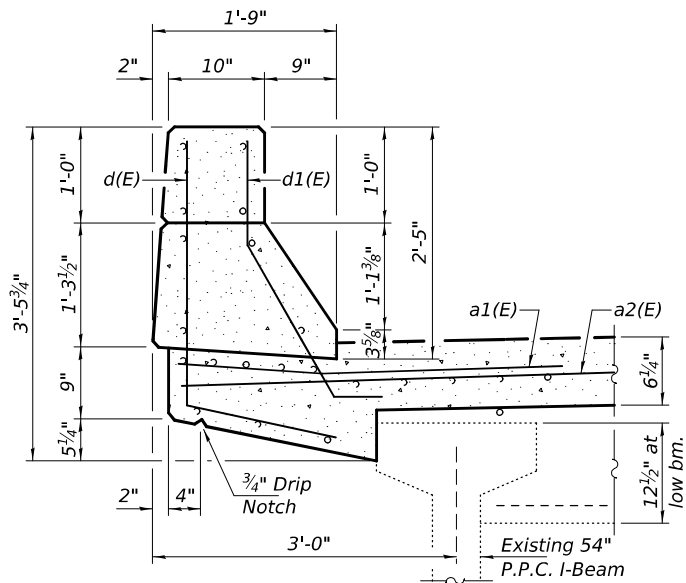
**CROSS SECTION**  
**SN 086-0029**

SHEET 2 OF 8 SHEETS

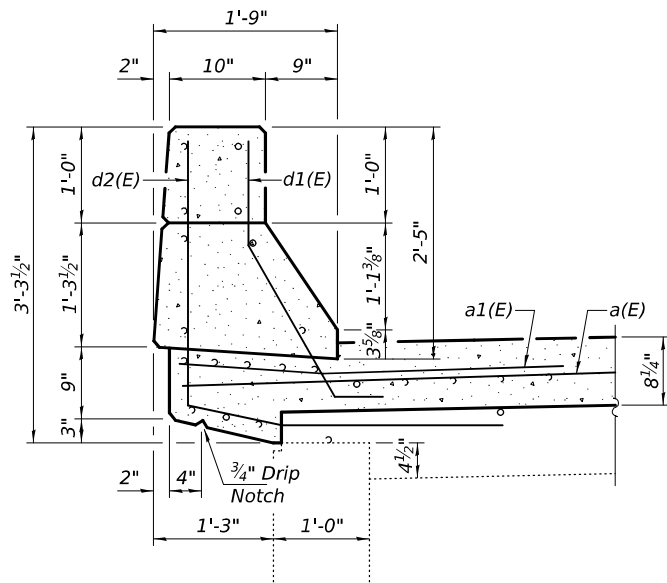
F.A.I. RTE.	SECTION	COUNTY	TOTAL SHEETS	SHEET NO.
72	(86-9HB2)BDR,BRR	SCOTT	15	9
CONTRACT NO. 72324				
ILLINOIS FED. AID PROJECT				



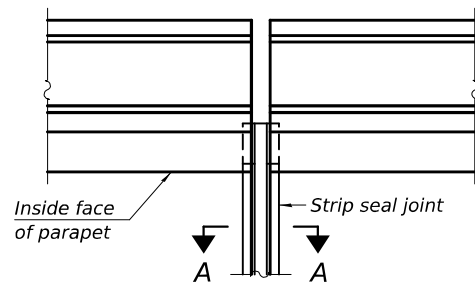
MODEL: 72324-011  
FILE NAME: pw:///idiot-pw.bentley.com:FWIDOT/Documents/IDOT O ces/Bureau of Bridges and Structures/OBM Projects/0860029/CADDData/Structures/0860029.dgn  
8/14/2025 4:24:10 PM



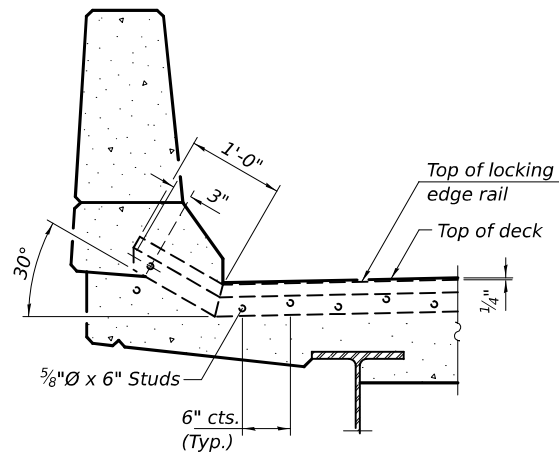
BRIDGE PARAPET DETAILS



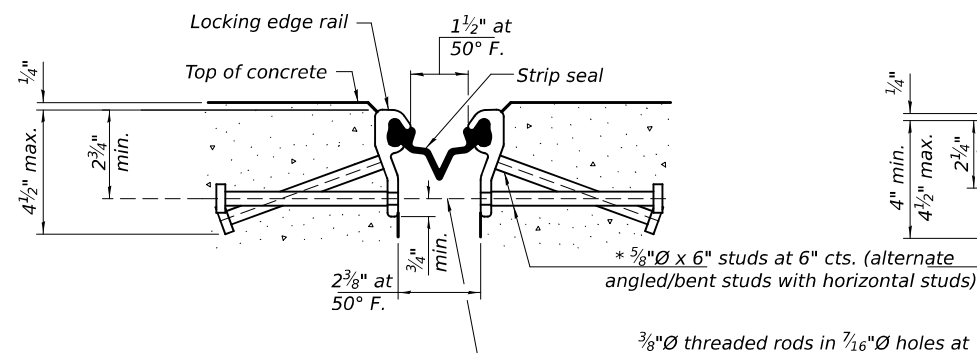
APPROACH PARAPET DETAILS



PLAN AT PARAPET



SECTION THRU PARAPET

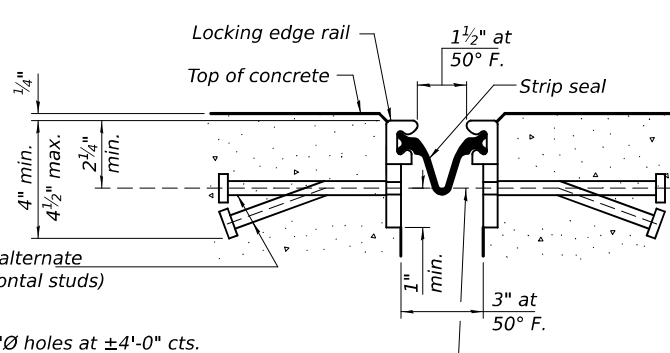


SHOWING ROLLED RAIL JOINT

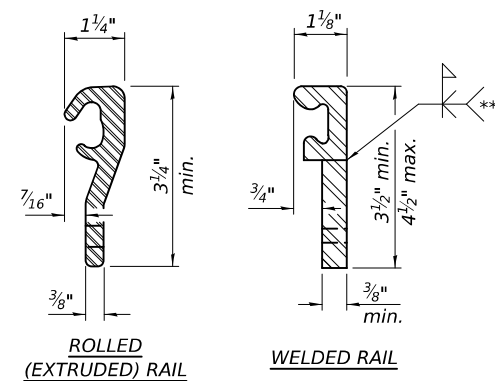
3/8"Ø threaded rods in 7/16"Ø holes at ±4'-0" cts. for holding the proper joint opening based on the temperature during the deck pour. Place to miss studs. All rods shall be burned, or sawed off flush with the plates after concrete is set.

SECTION A-A

\* Granular or solid flux filled headed studs conforming to Article 1006.32 of the Std. Specs., automatically end welded.

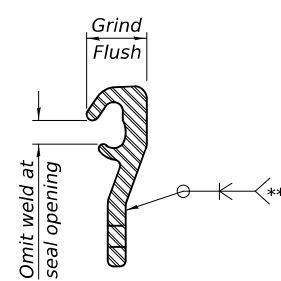


SHOWING WELDED RAIL JOINT



LOCKING EDGE RAILS

\*\* Back gouge not required if complete joint penetration is verified by mock-up.



LOCKING EDGE RAIL SPLICE

The inside of the locking edge rail groove shall be free of weld residue. Rolled rail shown, welded rail similar.

BILL OF MATERIAL

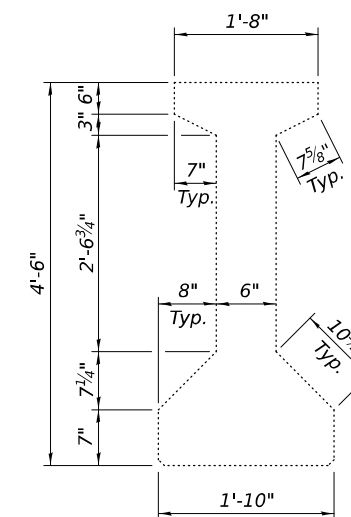
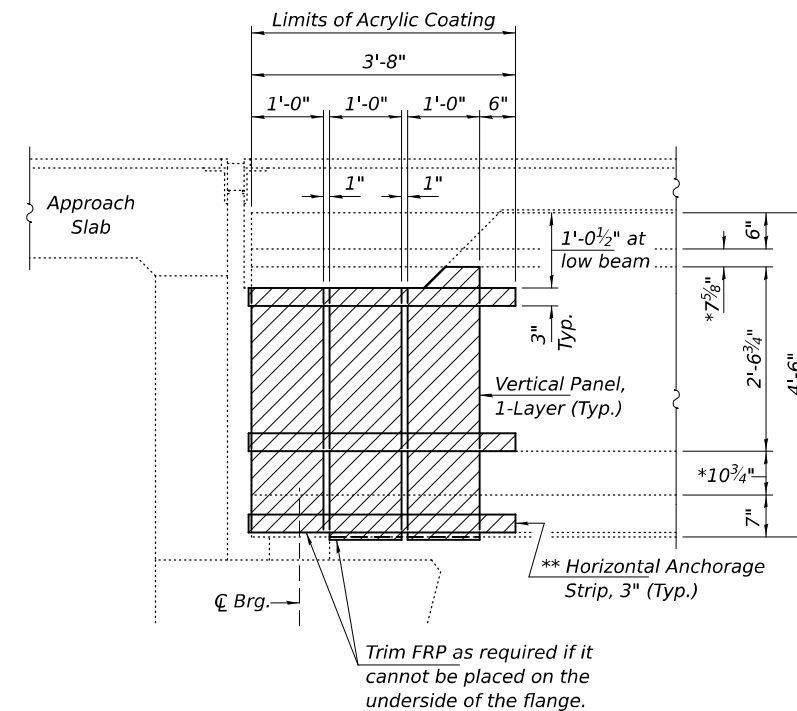
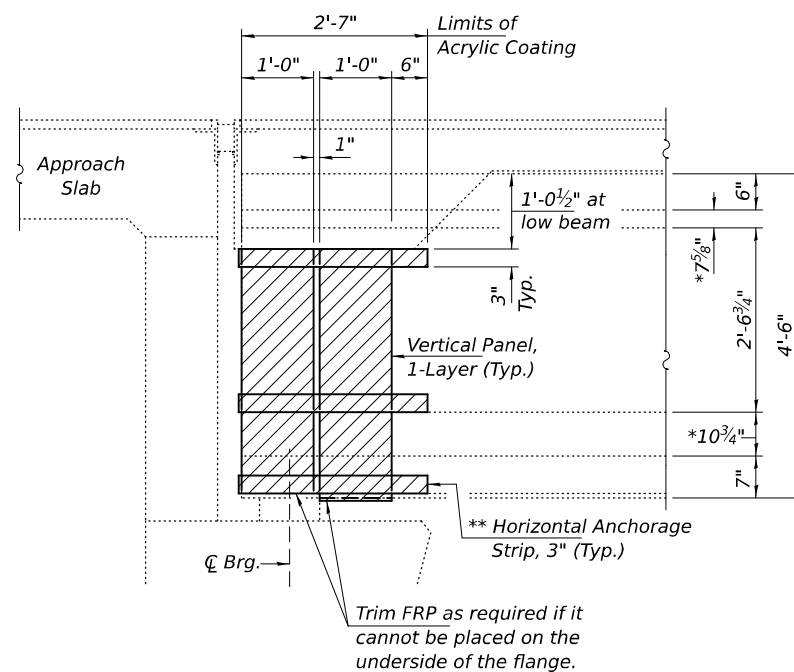
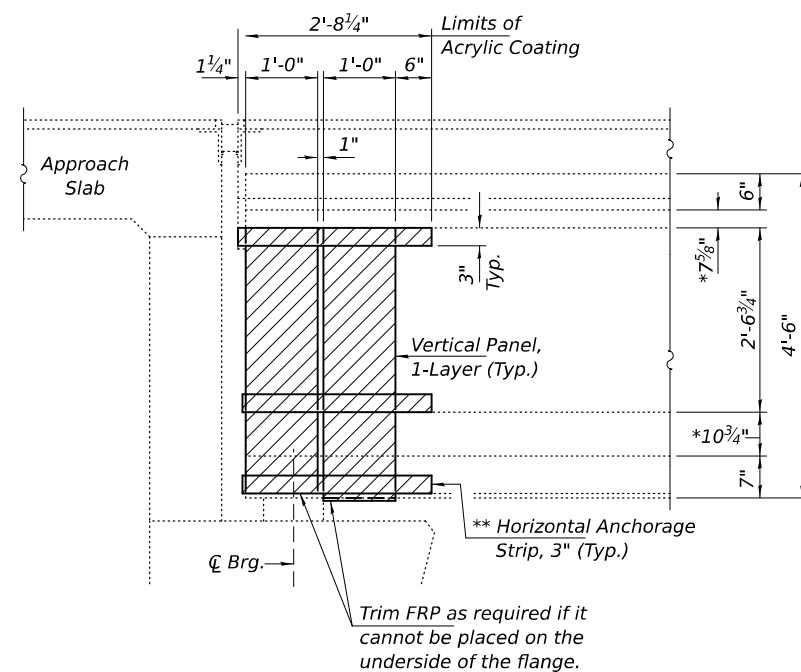
Item	Unit	Total
Preformed Joint Strip Seal	Foot	58

STATE OF ILLINOIS  
DEPARTMENT OF TRANSPORTATION

PREFORMED JOINT STRIP SEAL DETAILS  
SN 086-0029

SHEET 4 OF 8 SHEETS

F.A.I. RTE.	SECTION	COUNTY	TOTAL SHEETS	SHEET NO.
72	(86-9HB2)BDR,BRR	SCOTT	15	11
CONTRACT NO. 72324				
ILLINOIS FED. AID PROJECT				



**BEAM DIMENSIONS**  
For Information Only.

*F.R.P. REPAIR TYPE 1 (EXTERIOR FACE)*

4-Locations  
S. Abut. - Beams 1 & 5  
N. Abut. - Beams 1 & 5

### F.R.P. REPAIR TYPE 1 (INTERIOR FACE)

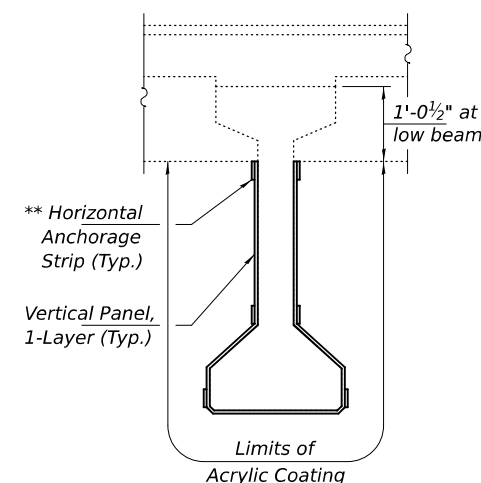
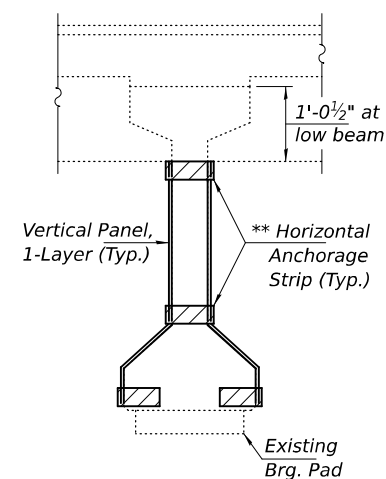
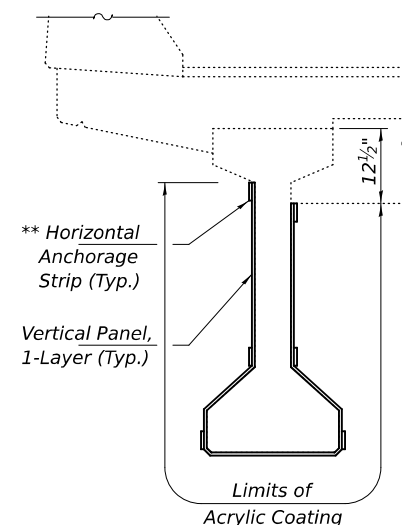
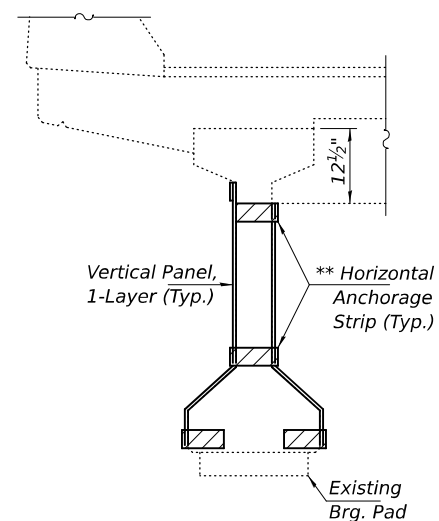
7-Locations  
S. Abut. - Beams 1, 2, 3 & 5  
N. Abut. - Beams 1, 3 & 5

### F.R.P. REPAIR TYPE 2

3-Locations  
S. Abut. - Beam 4  
N. Abut. - Beams 2 & 4

\* Along sloped flange.

**\*\* Horizontal Anchorage Strips to extend 6" beyond end of beam and wrap onto beam end.**



## NOTES

*The existing concrete surface shall be cleaned and prepared in accordance with the Special Provisions.  
Acrylic Coating shall be placed over the fiber wrap repairs.  
Two coats shall be applied.  
See Special Provisions for "FRP Strengthening for PPC I-Beam Repairs".*

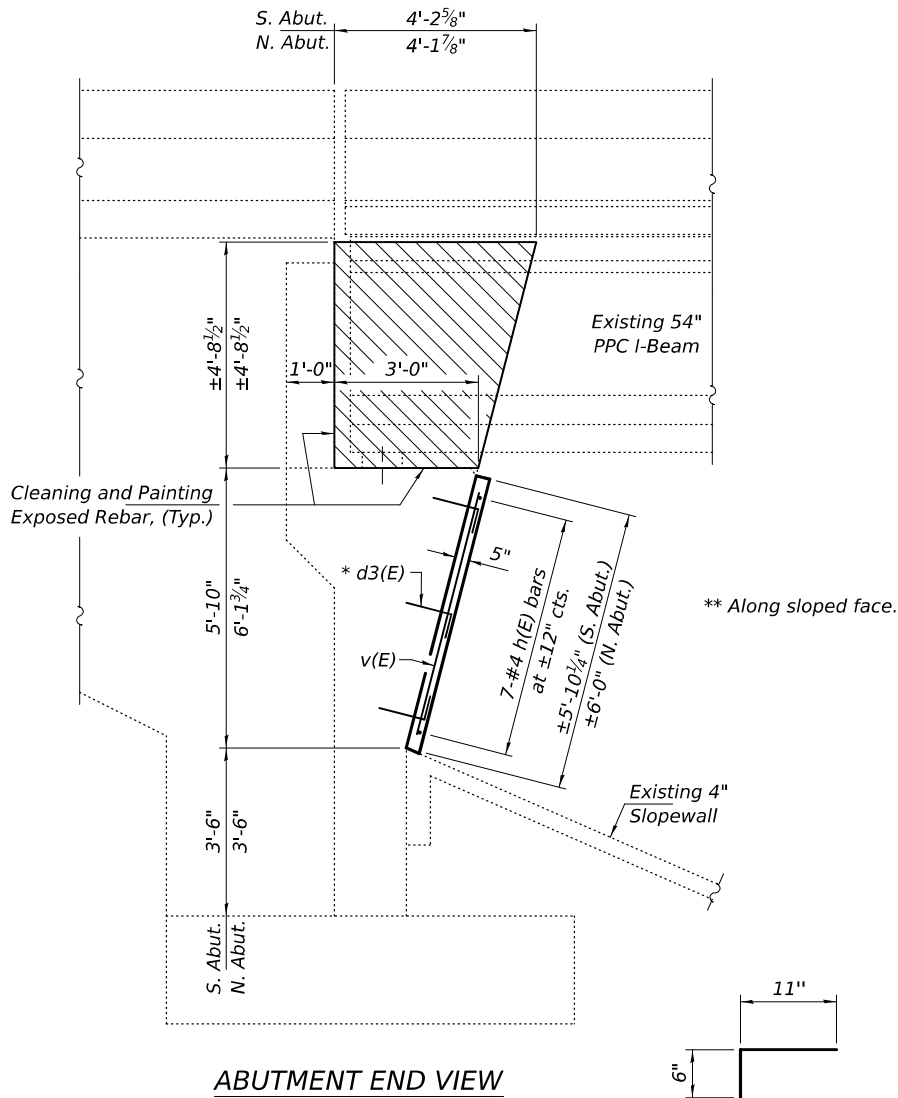
### BILL OF MATERIAL

ITEM	UNIT	QUANTITY
P.P.C. I-Beam Repair	Sq. Ft.	56.1
Fiber Wrap	Sq. Ft.	243
Acrylic Coating	Sq. Yd.	486

MODEL: 72324-013  
FILE NAME: pw:///idiot-pw.bentley.com:FWIDOT/Documents/IDOT O ces/Bureau of Bridges and Structures/0860029/CADDData/Structures/0860029.dgn

BILL OF MATERIAL

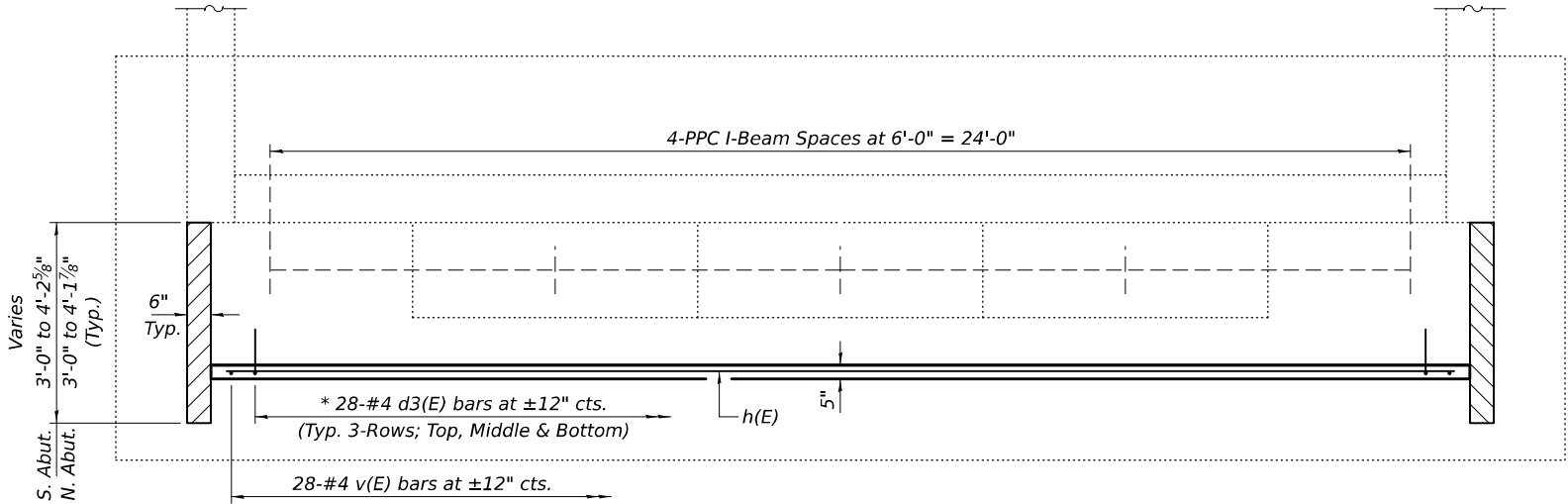
Bar	No.	Size	Length	Shape
d3(E)	168	#4	1'-5"	
h(E)	14	#4	27'-2"	
v(E)	56	#4	5'-6"	
Concrete Removal			Cu. Yd.	1.8
Concrete Structures			Cu. Yd.	5.8
Reinforcement Bars, Epoxy Coated			Pound	620



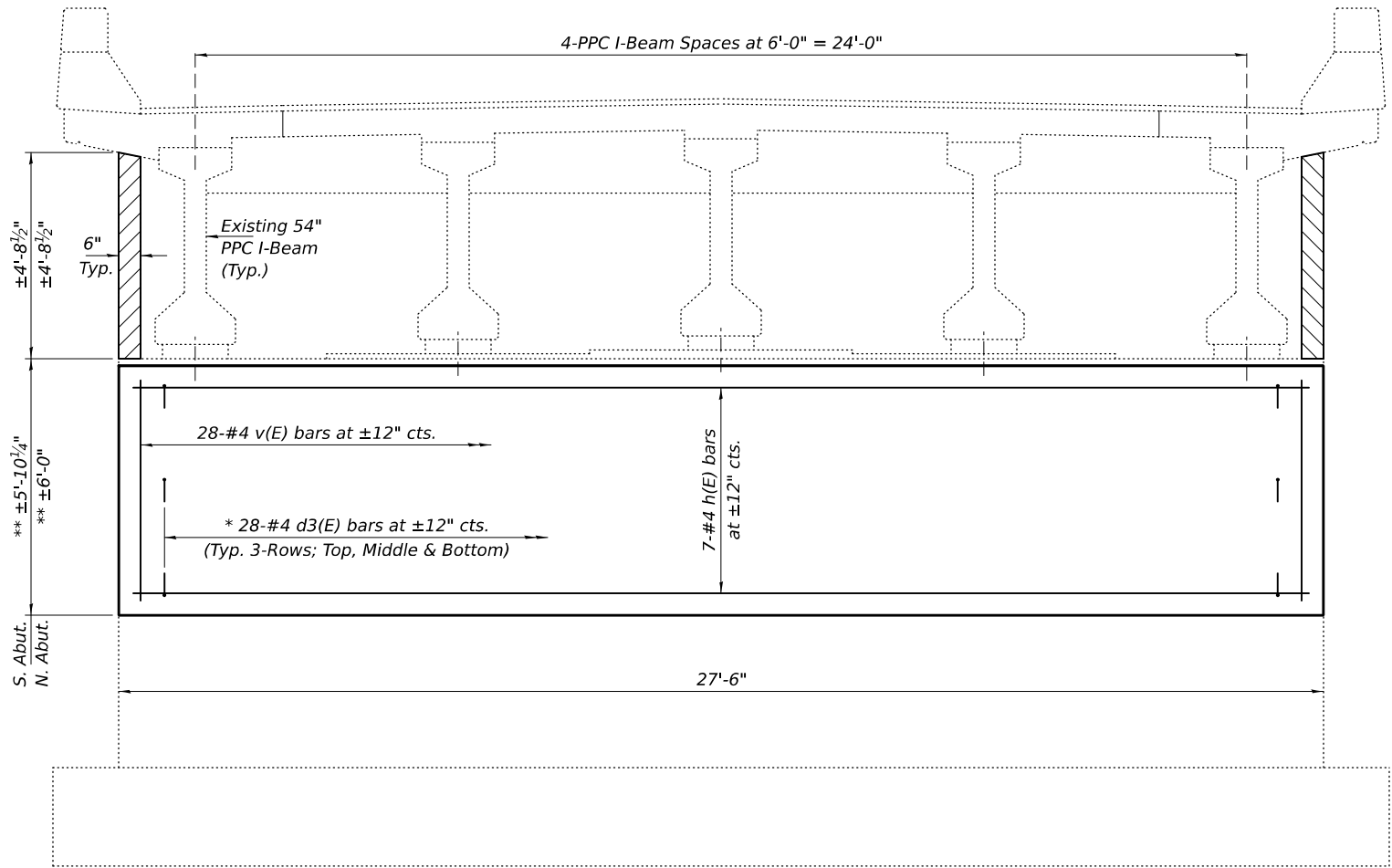
ABUTMENT END VIEW

\* BAR d3(E)

\* Epoxy grout d3(E) bars in 9" min. holes according to Article 584 of the Standard Specifications.



ABUTMENT PLAN VIEW



ABUTMENT ELEVATION VIEW

(Looking South at South Abutment.)  
(Looking North at North Abutment.)

Notes:  
Hatched areas indicate Concrete Removal.  
All loose, deteriorated, and/or delaminated concrete must be removed prior to placing new concrete face.  
Cost included with Concrete Removal. (See sheet 7 of 8 for estimated locations and quantities.)

DESIGNED -	SMR
CHECKED -	JSB
DRAWN -	STEFFEN
CHECKED -	SMR JSB

EXAMINED	ENGINEER OF STRUCTURAL SERVICES
PASSED	ENGINEER OF BRIDGES AND STRUCTURES

DATE -	AUGUST 14, 2025
REVISED -	
REVISED -	

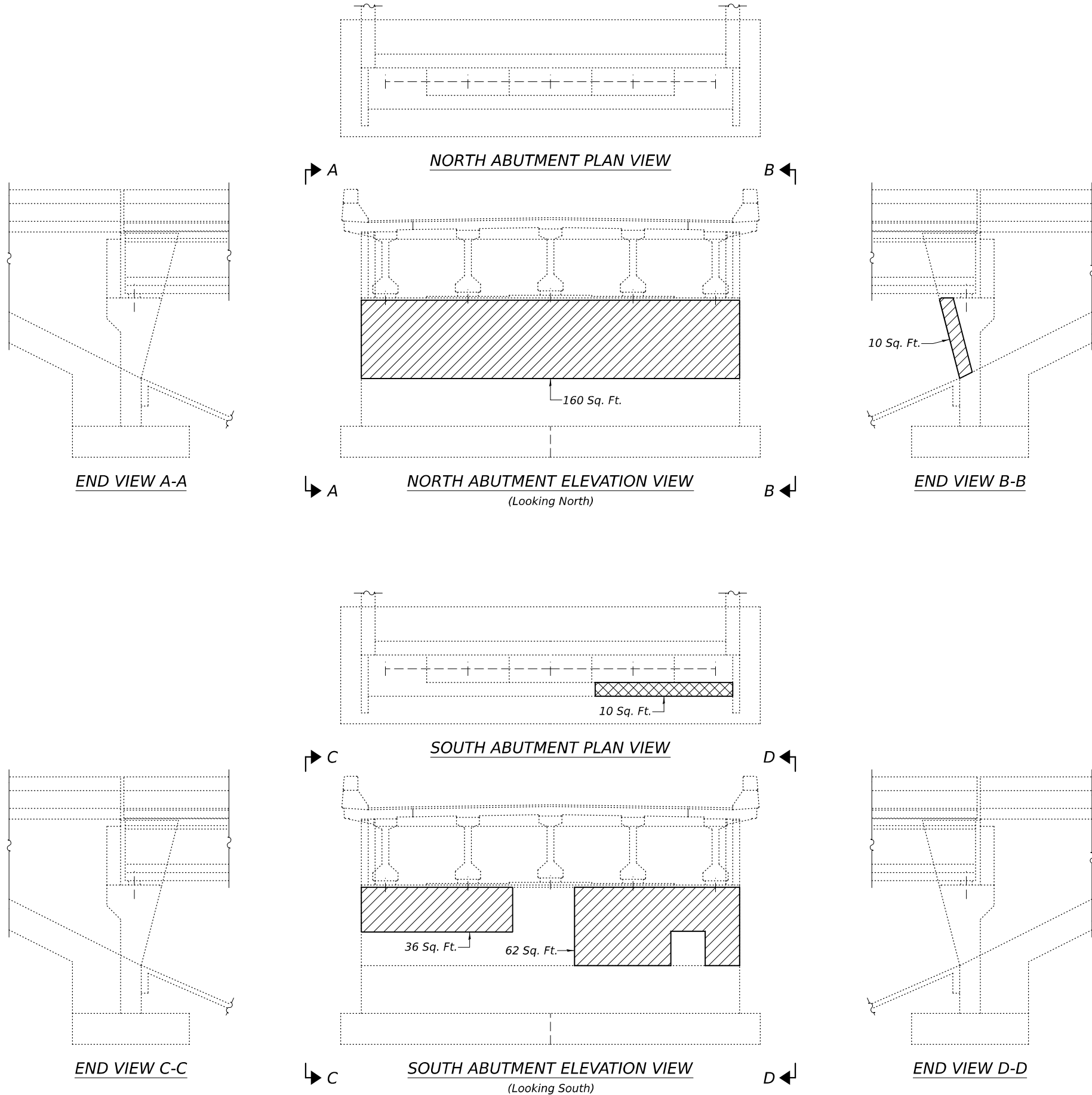
STATE OF ILLINOIS  
DEPARTMENT OF TRANSPORTATION

ABUTMENT REPAIR DETAILS  
SN 086-0029

SHEET 6 OF 8 SHEETS


F.A.I. RTE.	SECTION	COUNTY	TOTAL SHEETS	SHEET NO.
72	(86-9HB2)BDR,BRR	SCOTT	15	13
CONTRACT NO. 72324				
ILLINOIS FED. AID PROJECT				

MODEL: 72324-014  
FILE NAME: p:\dot-pw\entley.com\FWIDOT\Documents\DOT O ces\Bureau of Bridges and Structures\OBM Projects\0860029\CADDData\Structures\0860029.dgn



Notes:  
Hatched areas indicate Concrete Removal. Locations, sizes & quantities are estimated.  
Cross-Hatched areas indicate Structural Repair of Concrete (Depth  $\leq$  5 inches).  
All loose, deteriorated, and/or delaminated concrete must be removed prior to placing new concrete face.  
Cost included with Concrete Removal.

DESIGNED -	SMR
CHECKED -	JSB
DRAWN -	STEFFEN
CHECKED -	SMR JSB

EXAMINED	
PASSED	ENGINEER OF BRIDGES AND STRUCTURES

DATE -	AUGUST 14, 2025
REVISED -	
REVISED -	

STATE OF ILLINOIS  
DEPARTMENT OF TRANSPORTATION

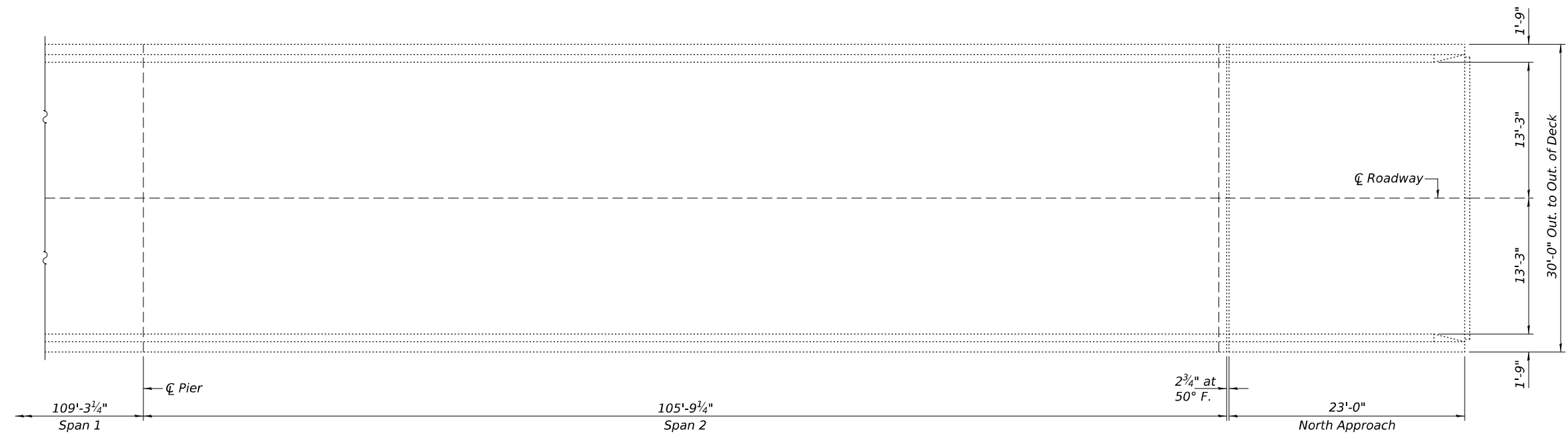
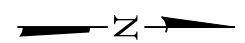
SUBSTRUCTURE REPAIR DETAILS  
SN 086-0029

SHEET 7 OF 8 SHEETS



F.A.I. RTE.	SECTION	COUNTY	TOTAL SHEETS	SHEET NO.
72	(86-9HB2)BDR,BRR	SCOTT	15	14
		CONTRACT NO. 72324		
		ILLINOIS	FED. AID PROJECT	



DECK PATCHING PLAN - SOUTH APPROACH & SPAN 1



DECK PATCHING PLAN - SPAN 2 & NORTH APPROACH

-  - Approach Slab Repair (Partial Depth)
-  - Deck Slab Repair (Full Depth, Type II)

Notes:  
Areas of deck & approach repairs shown are estimated.  
The Engineer shall show actual locations and size of deck & approach repairs on As-built Plans.



BILL OF MATERIAL

ITEM	UNIT	QUANTITY
* Approach Slab Repair (Partial Depth)	Sq. Yd.	5
* Deck Slab Repair (Full Depth, Type II)	Sq. Yd.	5

\* Quantity is estimated. Location and size of patches to be determined in the field by the Engineer.

MODEL: 72324-015  
FILE NAME: pw:///idiot-pw.bentley.com:FWIDOT/Documents/IDOT O ces/Bureau of Bridges and Structures/OBM Projects/0860029/CADDData/Structures/0860029.dgn  
8/14/2025 4:24:15 PM

DESIGNED - SMR
CHECKED - JSB
DRAWN - STEFFEN
CHECKED - SMR JSB

EXAMINED	 ENGINEER OF STRUCTURAL SERVICES
PASSED	 ENGINEER OF BRIDGES AND STRUCTURES

DATE - AUGUST 14, 2025
REVISED -
REVISED -

STATE OF ILLINOIS  
DEPARTMENT OF TRANSPORTATION

DECK PATCHING DETAILS  
SN 086-0029

SHEET 8 OF 8 SHEETS

F.A.I. RTE.	SECTION	COUNTY	TOTAL SHEETS	SHEET NO.
72	(86-9HB2)BDR,BRR	SCOTT	15	15
CONTRACT NO. 72324				
ILLINOIS FED. AID PROJECT				