

STATE OF ILLINOIS
DEPARTMENT OF TRANSPORTATION

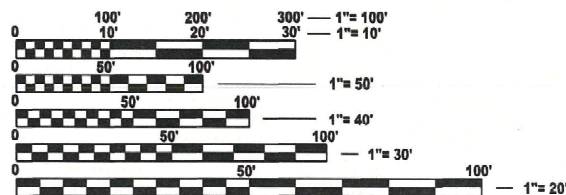
PROPOSED
HIGHWAY PLANS

VARIOUS ROUTES
DIST 8 BRIDGE DECK REPAIRS 2026-2

BRIDGE DECK REPAIRS
VARIOUS COUNTIES

C-98-112-25

FOR INDEX OF SHEETS, SEE SHEET NO. 2

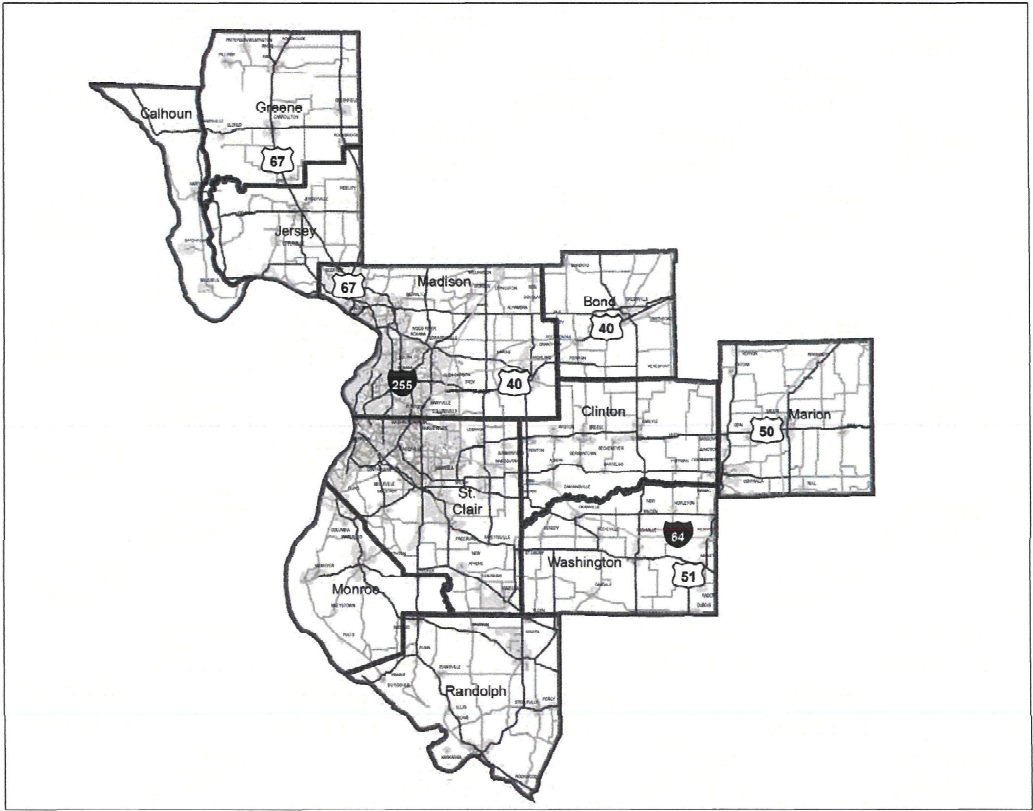


FULL SIZE PLANS HAVE BEEN PREPARED USING STANDARD
ENGINEERING SCALES. REDUCED SIZED PLANS WILL NOT
CONFORM TO STANDARD SCALES. IN MAKING MEASUREMENTS
ON REDUCED PLANS, THE ABOVE SCALES MAY BE USED.

J.U.L.I.E.
JOINT UTILITY LOCATION INFORMATION FOR EXCAVATION
1-800-892-0123
OR 811

PROJECT ENGINEER: BILLIE OWEN
PROJECT MANAGER: MIKE BERG

CONTRACT NO. 76U51



F.A. RTE.	SECTION	COUNTY	TOTAL SHEETS	SHEET NO.
VAR	*	VARIOUS	7	1
		ILLINOIS	CONTRACT NO. 76U51	

*DIST 8 BRIDGE DECK REPAIRS 2026-2

D-98-046-25



LOCATION OF SECTION INDICATED THUS: -

STATE OF ILLINOIS
DEPARTMENT OF TRANSPORTATION

SUBMITTED LINE 27 20 050
[Signature] REGIONAL ENGINEER
August 15 20 25
[Signature] ENGINEER OF DESIGN AND ENVIRONMENT
August 15 20 25
[Signature] DIRECTOR OF HIGHWAYS PROJECT IMPLEMENTATION

PRINTED BY THE AUTHORITY
OF THE STATE OF ILLINOIS

INDEX OF SHEETS

- 1. COVER SHEET
- 2. INDEX OF SHEETS, HIGHWAY STANDARDS, GENERAL NOTES, AND COMMITMENTS
- 3. SUMMARY OF QUANTITIES
- 4. DECK SLAB REPAIR (PARTIAL DEPTH) SPECIAL
- 5. TRAFFIC CONTROL AND PROTECTION STANDARD 701400 (SPECIAL)
- 6. TRAFFIC CONTROL AND PROTECTION STANDARD 701401 (SPECIAL)
- 7. TRAFFIC CONTROL AND PROTECTION STANDARD (SPECIAL)

HIGHWAY STANDARDS

- 000001-08 STANDARD SYMBOLS, ABBREVIATIONS & PATTERNS
- 001006 DECIMAL OF AN INCH AND OF A FOOT
- 420001-10 PAVEMENT JOINTS
- 701400-12 APPROACH TO LANE CLOSURE FREEWAY EXPRESSWAY
- 701401-13 LANE CLOSURE FREEWAY EXPRESSWAY
- 701411-09 LANE CLOSURE MULTILANE ENTRANCE OR EXIT RAMP 45MPH OR
- 701428-01 MORE TRAFFIC CONTROL SETUP REMOVAL FREEWAY EXPRESSWAY
- 701901-10 TRAFFIC CONTROL DEVICES

I.D.O.T. CONTACT PERSONS

CRAIG POETTKER OFFICE PHONE : (618) 346-3279
(OPERATIONS FIELD ENGINEER)

DAVID CASTENS OFFICE PHONE : (618) 346-3174
(ACTING BRIDGE MAINTENANCE ENGINEER)

GENERAL NOTES

- 1. FORM BSPE 725 IS REQUIRED PRIOR TO START OF EACH CALL-OUT, AND IS NOTED ON THE CALL-OUT SHEET.
- 2. NO UTILITY CONFLICTS ARE ANTICIPATED.
- 3. THE DEPARTMENT STRONGLY ENCOURAGES THE PRIME CONTRACTOR AND THEIR APPROVED SUB-CONTRACTORS TO HIRE MINORITY, WOMEN, AND DISADVANTAGED INDIVIDUALS FROM ITS FEDERALLY FUNDED HIGHWAY CONSTRUCTION CAREERS TRAINING PROGRAM (HCCTP) TO HELP MEET WORKFORCE AND TRAINEE GOALS. THIS PROGRAM IS TRAINING MINORITIES, WOMEN AND DISADVANTAGED INDIVIDUALS IN HIGHWAY CONSTRUCTION-RELATED SKILLS, E.G. MATH FOR THE TRADES, JOB READINESS, TECHNICAL SKILLS COURSEWORK (CARPENTRY, CONCRETE FLATWORK, BLUEPRINT READING, SITE PLANS, SITE WORK, TOOLS USE, ETC.) AND OSHA 10 HOUR CERTIFICATION, TO PREPARE THEM FOR A CAREER IN THE HIGHWAY CONSTRUCTION TRADES. GRADUATES ARE WELL-TRAINED AND READY TO BECOME PRODUCTIVE ENTRY-LEVEL CONSTRUCTION WORKERS. CONTACT THE DISTRICT 8 EEO OFFICE AT 618-346-3360 AND/OR THE HCCTP COORDINATOR AT 618-874-6528 TO LEARN MORE ABOUT THE PROGRAM AND FOR ASSISTANCE IN MEETING WORKFORCE AND TRAINEE GOALS.
- 4. THE RESIDENT ENGINEER SHALL VERIFY THE EXISTENCE OF HIGHWAY LIGHTING AND/OR I.T.S. UTILITIES WITHIN THE PROJECT LIMITS. IF HIGHWAY LIGHTING AND/OR I.T.S. EXISTS WITHIN THE PROJECT LIMITS, AND IF THESE ITEMS REQUIRE LOCATING, THE CONTRACTOR SHALL BE DIRECTED TO DO SO ACCORDING TO SECTION 803 OF THE STANDARD SPECIFICATIONS. THIS WORK SHALL BE PAID FOR ACCORDING TO ARTICLE 109.04 OF THE STANDARD SPECIFICATIONS

COMMITMENTS

NO COMMITMENTS

REV - MS

MODEL: Untitled [Sheet]
FILE NAME: c:\pwr_work\pwr\idot\robert.hughes@illinois.gov\411989\1D876U51-sh1-genmode.dgn

	USER NAME = Robert.Hughes	DESIGNED -	REVISED -	STATE OF ILLINOIS DEPARTMENT OF TRANSPORTATION	INDEX OF SHEETS, HIGHWAY STANDARDS, GENERAL NOTÉS, & COMMITMENTS	F.A. RTE.	SECTION	COUNTY	TOTAL SHEETS	SHEET NO.
		DRAWN -	REVISED -			VAR	*	VARIOUS	7	2
		CHECKED -	REVISED -			CONTRACT NO. 76U51				
	PLOT DATE = 6/12/2025	DATE -	REVISED -			ILLINOIS FED. AID PROJECT				
					SCALE:	SHEET 1	OF 1	SHEETS	STA.	TO STA.

MODEL: SQQ [Sheet]
FILE NAME: c:\pw\work\pwid\robert.hughes@illinois.gov\4119891\0878\J51-shr-SQQ.dgn

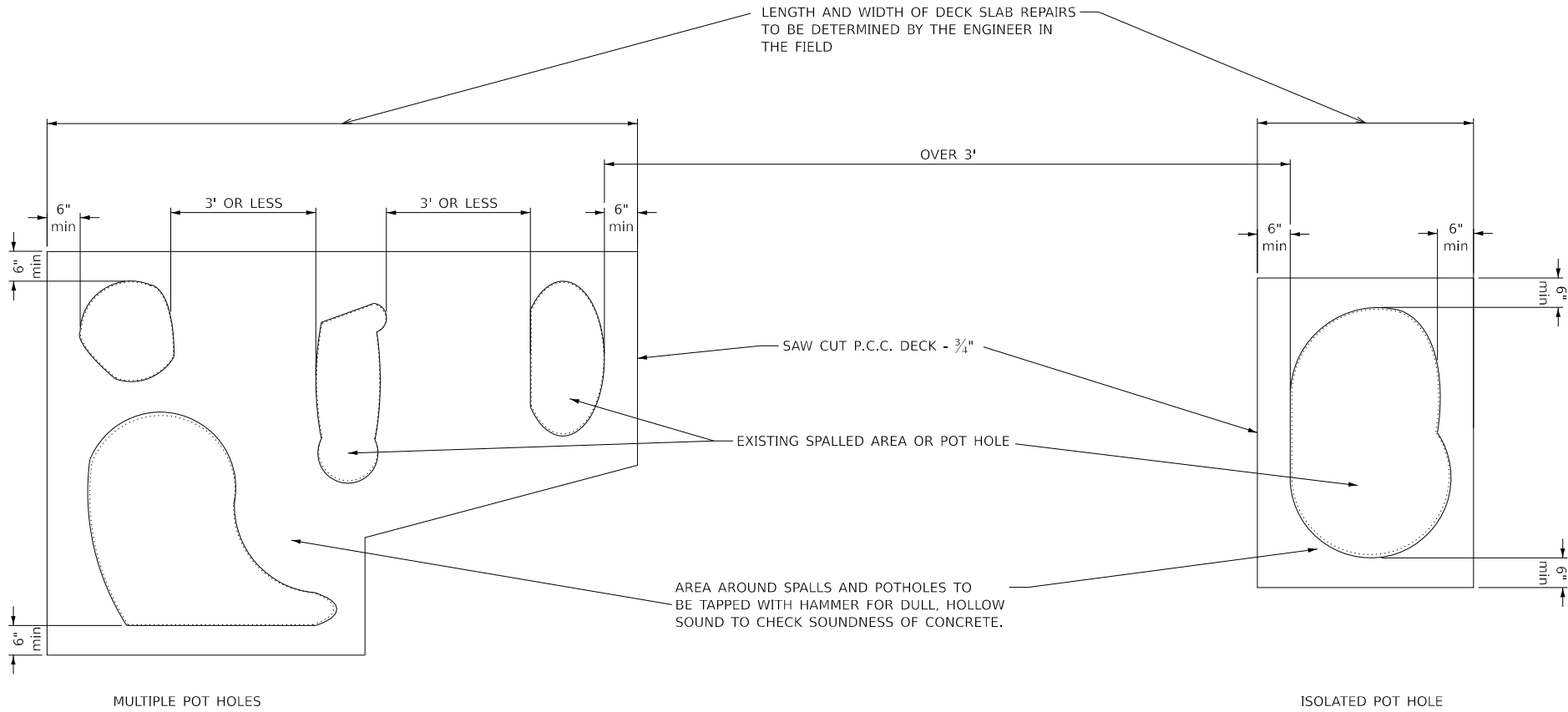
CODE NO.	ITEM	UNIT	TOTAL QUANTITY	CONSTR. CODE
				100% STATE
				BRIDGE
				0047
70100420	TRAFFIC CONTROL AND PROTECTION, STANDARD 701411	EACH	13	13
70103815	TRAFFIC CONTROL SURVEILLANCE	CAL DA	37	37
70107025	CHANGEABLE MESSAGE SIGN	CAL DA	270	270
X7010206	TRAFFIC CONTROL AND PROTECTION, STANDARD 701401 (SPECIAL)	EACH	20	20
X7010218	TRAFFIC CONTROL AND PROTECTION, (SPECIAL)	EACH	13	13
Z0008759	CALL OUT	EACH	33	33
Z0016001	DECK SLAB REPAIR (FULL DEPTH, TYPE I)	SQ YD	10	10
Z0016002	DECK SLAB REPAIR (FULL DEPTH, TYPE II)	SQ YD	200	200
Z0016200	DECK SLAB REPAIR (PARTIAL)	SQ YD	200	200
Ø Z0076604	TRAINEES TRAINING PROGRAM GRADUATE	HOUR	1000	1000

REV - MS

	USER NAME = Robert.Hughes	DESIGNED -	REVISED -	STATE OF ILLINOIS DEPARTMENT OF TRANSPORTATION	SUMMARY OF QUANTITIES			F.A. RTE.	SECTION	COUNTY	TOTAL SHEETS	SHEET NO.
		DRAWN -	REVISED -					VAR	*	VARIOUS	7	3
		CHECKED -	REVISED -					CONTRACT NO. 76U51				
	PLOT DATE = 7/2/2025	DATE -	REVISED -		SCALE:	SHEET 1	OF 1 SHEETS	STA.	TO STA.	ILLINOIS FED. AID PROJECT		

DIST 8 BRIDGE DECK REPAIRS 2026-2

PLAN VIEW (BRIDGE DECK)



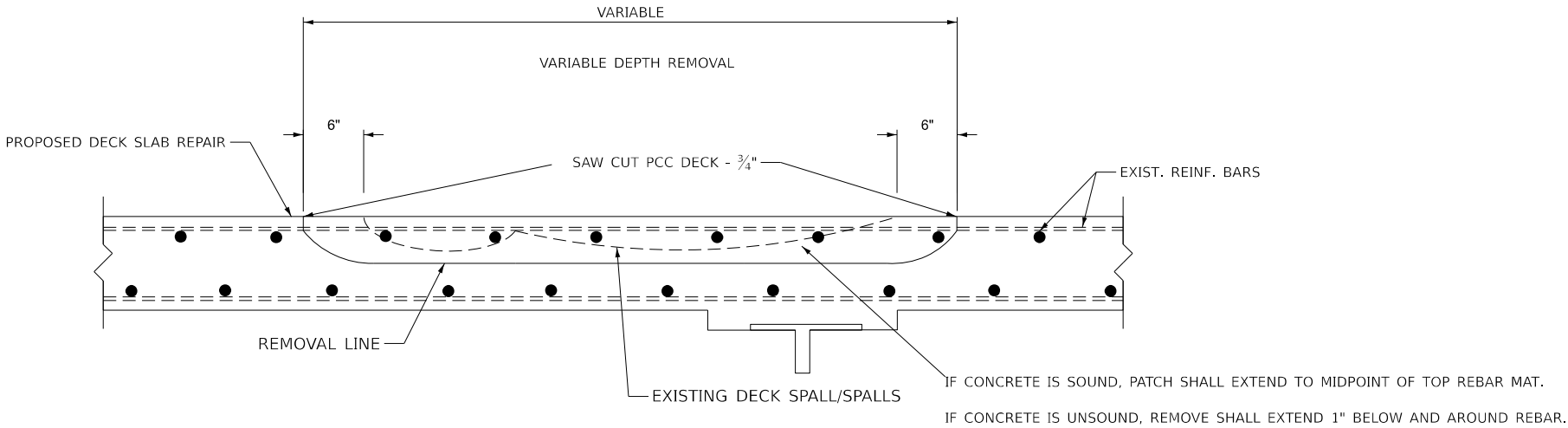
NOTES

ALL EXISTING REINFORCEMENT BARS SHALL REMAIN IN PLACE.

IN ORDER TO PREVENT FRACTURE OF THE DECK, ALL HAND AND MECHANICAL TOOLS USED FOR REMOVING THE SURFACE CONCRETE FROM THE BRIDGE, SHALL BE LIMITED TO 45 POUNDS UNLESS OTHERWISE APPROVED BY THE ENGINEER.

IN THE EVENT DETERIORATED CONCRETE EXTENDS BEYOND THE MAXIMUM 1/2 DECK THICKNESS, AS SPECIFIED FOR PARTIAL DEPTH PATCHES, THE CONCRETE SHALL BE REMOVED FOR THE FULL DEPTH OF THE DECK AND SHALL BE REPLACED IN THE SAME MANNER AS DESCRIBED FOR PARTIAL DEPTH PATCHING. THIS WORK WILL BE MEASURED IN SQUARE YARDS AND WILL BE PAID FOR AS CONCRETE DECK PATCHING, (FULL DEPTH) WHICH SHALL INCLUDE ANY PROTECTIVE SHIELD REQUIRED OVER PEDESTRIAN, VEHICULAR OR NAVIGATIONAL TRAFFIC. THIS WORK SHALL NOT BE PERFORMED ON CONCRETE SLAB BRIDGES AND BRIDGES WITH PRECAST CONCRETE STAY IN PLACE FORMS.

UPON COMPLETION, AS-BUILTS SHOWING SIZE AND LOCATION OF WORK SHALL BE PROVIDED TO THE BUREAU OF BRIDGES AND STRUCTURES.

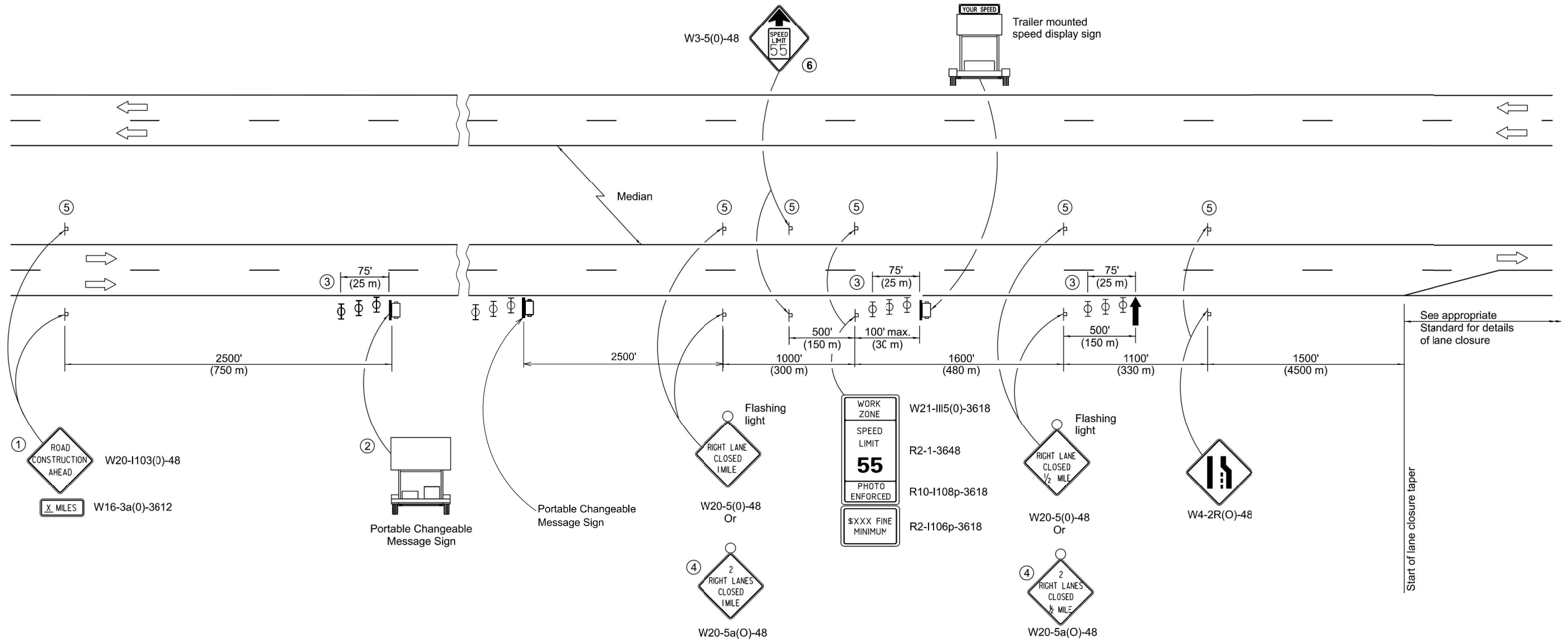


X-SECTION

MODEL: Patch Detail [Sheet]
FILE NAME: c:\p\work\p\wd\robert.hughes@illinois.gov\119691\10876151-sht-details.dgn

	USER NAME = Robert,Hughes	DESIGNED -	REVISED -	STATE OF ILLINOIS DEPARTMENT OF TRANSPORTATION	DECK SLAB REPAIR (PARTIAL)			F.A. RTE.	SECTION	COUNTY	TOTAL SHEETS	SHEET NO.
		DRAWN -	REVISED -					VAR	*		7	4
		CHECKED -	REVISED -					CONTRACT NO. 76U51				
	PLOT DATE = 8/11/2025	DATE -	REVISED -		SCALE:	SHEET 1	OF 1	SHEETS	STA.	TO STA.	ILLINOIS FED. AID PROJECT	

MODEL: TCP 1 [Sheet]
FILE NAME: c:\p_w\work\robert.hughes@illinois.gov\119691\10876\51-sht-details.dgn



SYMBOLS

- ↑ Arrow board
- ☐ Trailer mounted sign
- ┆ Sign
- ⊕ Type II barricade, drum, or vertical barricade with monodirectional flashing light

- ① The Road Construction Ahead sign shall be located 3 to 5 miles in advance of the project limits.
- ② The message board shall be used to display status of lanes within the project. The primary messages shall be:
"Right Lane Closed" / " x Miles Ahead"
"Left Lane Closed" / " x Miles Ahead"
"All Lanes Open"
- ③ Three, Type II barricades, drums, or vertical barricades at 25' (8 m) centers.
- ④ This sign shall be used when 2 lanes are closed.
- ⑤ This sign shall be omitted when median width is less than 10' (3 m).
- ⑥ This sign shall only be used if the existing speed limit is greater than 65 mph.

GENERAL NOTES

This standard is used where at any time a lane is closed on a freeway/expressway. When the left lane is closed, LEFT LANE CLOSED signs shall be substituted for the RIGHT LANE CLOSED signs.

The first sign and the message board are stationary.

The last four signs and arrow board shall be moved as necessary to maintain the required distance from the start of the lane closure taper(s).

All dimensions are in inches (millimeters) unless otherwise shown.

USER NAME = Robert,Hughes	DESIGNED -	REVISED -
	DRAWN -	REVISED -
	CHECKED -	REVISED -
PLOT DATE = 6/25/2025	DATE -	REVISED -

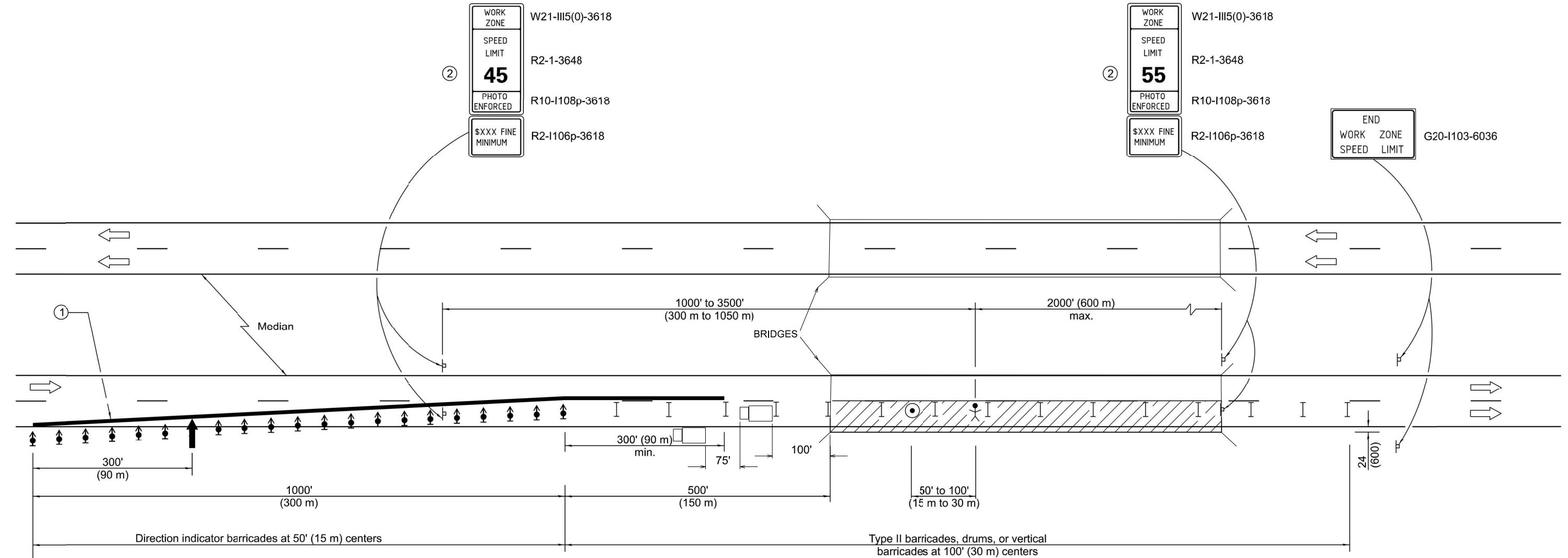
STATE OF ILLINOIS
DEPARTMENT OF TRANSPORTATION

TRAFFIC CONTROL AND PROTECTION STANDARD 701400 (SPECIAL)			
SCALE:	SHEET 1	OF 1	SHEETS
STA.	TO STA.		

F.A. RTE.	SECTION	COUNTY	TOTAL SHEETS	SHEET NO.
VAR	*	VARIOUS	7	5
CONTRACT NO. 76U51				
ILLINOIS FED. AID PROJECT				

MODEL: TCP 2 [Sheet]
FILE NAME: c:\p_w\work\robert.hughes@illinois.gov\d119691\0876\51-sht-details.dgn

(SPECIAL)
See Standard 701400 for approach
Start of lane closure taper



SYMBOLS

- ↑ Arrow board
- ▨ Work area
- ⚡ Worker
- ⚡ Sign
- ⚡ Direction indicator barricade with steady burn monodirectional light
- ⚡ Type II barricade, drum, or vertical barricade
- ⚡ Spotter
- ⚡ Truck with Attenuator/TMA

NOTE: Trucks with Attenuators/TMAs required when workers present.

- ① ReflectORIZED temporary pavement marking tape shall be placed throughout the taper and for 300' (90 m) along-side the work area when the closure time is greater than fourteen days. The edge line shall be white for right lane closure and yellow for left lane closures.
- ② Work Zone speed limit signs shall be moved as necessary to maintain the required spacing between the signs and the workers in each separate work activity. Work Zone Speed Limit 55 Photo Enforced sign shall be omitted when the work area dictates placement of the sign array within 500' (150 m) of the End Work Zone Speed Limit Sign.

GENERAL NOTES

This Standard is used where at any time any vehicle, equipment, workers or their activities will encroach on the lane adjacent to the shoulder, or on the shoulder within 24 (600) of the edge of pavement.

This Standard must always be used in combination with Standard 701400.

This Standard also applies when work is being performed in the left lane. Under these conditions, the setup would be a mirror image to what is shown.

A check barricade shall be placed in the middle of the closed lane and at the shoulder at 1000' (300 m) centers.

All dimensions are in inches (millimeters) unless otherwise shown.

USER NAME = Robert,Hughes	DESIGNED -	REVISED -
	DRAWN -	REVISED -
	CHECKED -	REVISED -
PLOT DATE = 6/25/2025	DATE -	REVISED -

STATE OF ILLINOIS
DEPARTMENT OF TRANSPORTATION

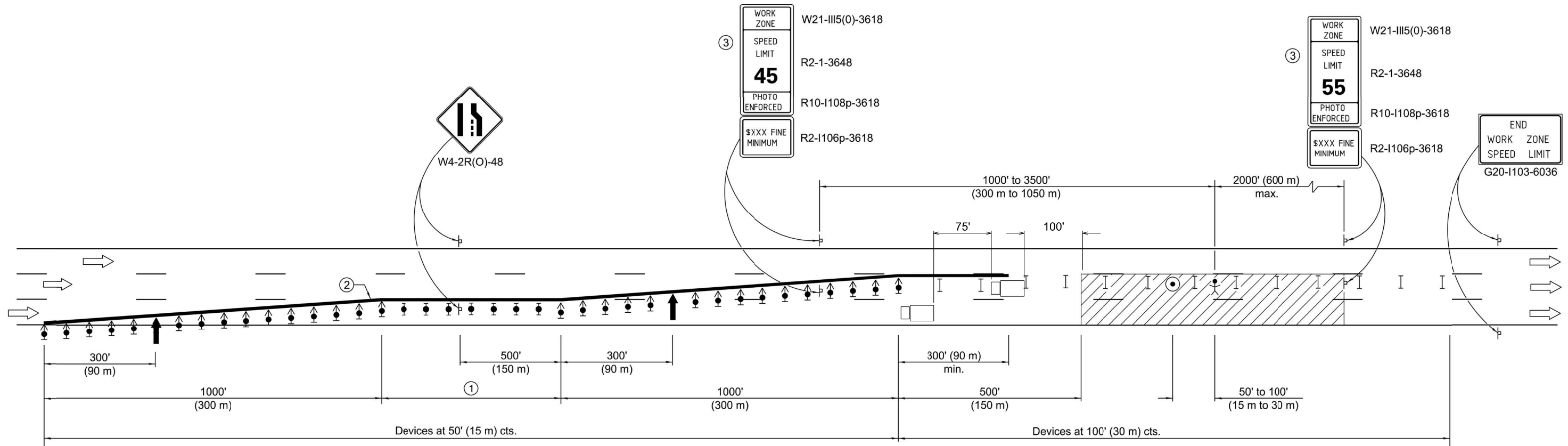
TRAFFIC CONTROL AND PROTECTION, STANDARD 701401 (SPECIAL)

SCALE: SHEET 1 OF 1 SHEETS STA. TO STA.

F.A. RTE.	SECTION	COUNTY	TOTAL SHEETS	SHEET NO.
VAR	*	VARIOUS	7	6
CONTRACT NO. 76U51				
ILLINOIS FED. AID PROJECT				

DIST 8 BRIDGE DECK REPAIRS 2026-2

MODEL: TCP 3 [Sheet]
FILE NAME: c:\paw_work\pawid\robert.hughes@illinois.gov\1196911D876U51-sht-details.dgn



(SPECIAL)
See Standard 701400 for approach
Start of lane closure taper

SYMBOLS

- ↑ Arrow board
- ▨ Work area
- ⚡ Worker
- ⚡ Sign
- ⚡ Direction indicator barricade with steady burn monodirectional light
- ⚡ Type II barricade, drum, or vertical barricade with steady burn monodirectional light
- ⚡ Spotter
- ⚡ Type II barricade, drum, or vertical barricade
- ⚡ Truck with Attenuator/TMA

NOTE: Trucks with Attenuators/TMAs required when workers present.

- ① The length of the tangent section shall be:

Duration of Closure	Length of Tangent Section
< 14 Days	1000' (300 m)
≥ 14 Days	2000' (600 m)

- ② ReflectORIZED temporary pavement marking tape shall be placed throughout the tapers and for 300' (90 m) along-side the work area when the closure time is greater than fourteen days. The edge line shall be white for right lane closures and yellow for left lane closures.
- ③ Work zone speed limits signs shall be moved as necessary to maintain the required spacing between the signs and the workers in each separate work activity. Work Zone Speed Limit 55 Photo Enforced sign shall be omitted when the work area dictates that placement of the sign array within 500' (150 m) of the End Work Zone Speed Limit sign.

GENERAL NOTES

This Standard is used where at any time any vehicle, equipment, workers or their activities will encroach on two lanes of a freeway/expressway.

This Standard must always be used in combination with Standard 701400.

This Standard also applies when work is being performed in the left lanes. Under these conditions, the set up would be a mirror image to what is shown.

Check barricades shall be placed in the middle of the closed lanes at 1000' (300 m) centers.

All dimensions are in inches (millimeters) unless otherwise shown.

USER NAME = Robert,Hughes	DESIGNED -	REVISED -
	DRAWN -	REVISED -
	CHECKED -	REVISED -
PLOT DATE = 6/25/2025	DATE -	REVISED -

STATE OF ILLINOIS
DEPARTMENT OF TRANSPORTATION

TRAFFIC CONTROL AND PROTECTION STANDARD (SPECIAL)

SCALE: SHEET 1 OF 1 SHEETS STA. TO STA.

F.A. RTE.	SECTION	COUNTY	TOTAL SHEETS	SHEET NO.
VAR	*	VARIOUS	7	7
CONTRACT NO. 76U51				
ILLINOIS FED. AID PROJECT				

DIST 8 BRIDGE DECK REPAIRS 2026-2