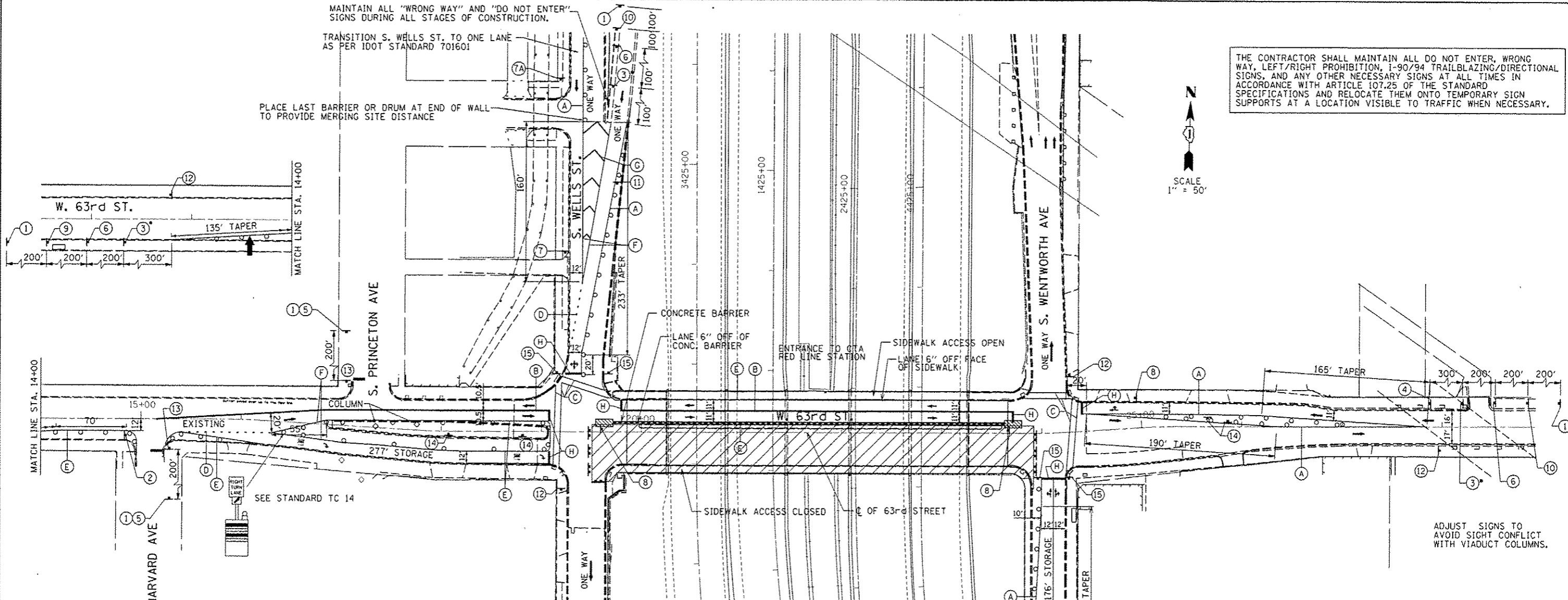


MAINTAIN ALL "WRONG WAY" AND "DO NOT ENTER" SIGNS DURING ALL STAGES OF CONSTRUCTION.

TRANSITION S. WELLS ST. TO ONE LANE AS PER IDOT STANDARD 701601

PLACE LAST BARRIER OR DRUM AT END OF WALL TO PROVIDE MERGING SITE DISTANCE

THE CONTRACTOR SHALL MAINTAIN ALL DO NOT ENTER, WRONG WAY, LEFT/RIGHT PROHIBITION, 1-90/94 TRAILBLAZING/DIRECTIONAL SIGNS, AND ANY OTHER NECESSARY SIGNS AT ALL TIMES IN ACCORDANCE WITH ARTICLE 107.25 OF THE STANDARD SPECIFICATIONS AND RELOCATE THEM ONTO TEMPORARY SIGN SUPPORTS AT A LOCATION VISIBLE TO TRAFFIC WHEN NECESSARY.



ADJUST SIGNS TO AVOID SIGHT CONFLICT WITH VIADUCT COLUMNS.

**STAGE I:**

- 63RD STREET:**
- INSTALL ALL TRAFFIC CONTROL, PAVEMENT MARKING, TAPERS, DRUMS, BARRICADES, SIGNING AND REMOVE CONFLICTING PAVEMENT MARKING. INSTALL CONCRETE BARRIERS AND IMPACT ATTENUATORS. PLACE TEMPORARY TRAFFIC SIGNALS TO STAGE IA CONFIGURATION.
  - REMOVE AND RECONSTRUCT SOUTH (EASTBOUND) PORTION OF BRIDGE, ABUTMENTS, PIERS, APPROACH PANELS, SIDEWALKS AND RECONSTRUCTED PAVEMENTS. CONSTRUCT PORTIONS OF PERMANENT TRAFFIC SIGNALS AND LIGHTING. RECONSTRUCT SOUTH (EASTBOUND) PAVEMENT INCLUDING 63RD STREET/ WENTWORTH AVE. INTERSECTION AND THE EAST PORTION OF THE 63RD STREET/ YALE AVE. INTERSECTION. COORDINATE SHIFTING OF ELECTRICAL CONDUITS.
  - TAPE TEMPORARY PAVEMENT MARKINGS SHALL BE USED ON EXISTING/NEWLY CONSTRUCTED SURFACES. TEMPORARY PAINT SHALL BE USED ON TEMPORARY PAVEMENT OR PAVEMENT TO BE REMOVED.
  - TEMPORARY PAVEMENT MARKING (PAINT) SHALL BE REQUIRED ON ALL TEMPORARY PAVEMENT SURFACES OVER THE WINTER MONTHS. PAINT USED OVER THE WINTER MONTHS IN THE TRANSITION AREAS ON EXISTING SURFACES SHALL BE REMOVED BY GRINDING WHEN THE FINAL PAVEMENT MARKINGS ARE INSTALLED. ON EXPRESSWAYS, EPOXY MARKINGS SHALL BE REQUIRED ON ALL TEMPORARY PAVEMENT SURFACES OVER THE WINTER MONTHS. EPOXY USED OVER THE WINTER IN TRANSITION AREAS AT THE LIMITS OF CONSTRUCTION ON EXISTING SURFACES SHALL BE REMOVED BY GRINDING WHEN FINAL PAVEMENT MARKINGS ARE INSTALLED.

**LEGEND:**

- STAGE I WORK AREA
- CONCRETE BARRIER
- EXISTING PAVEMENT MARKINGS
- PROPOSED PAVEMENT MARKINGS
- 4" YELLOW LINE
- 4" DOUBLE YELLOW LINE
- 6" WHITE LINE
- 6" WHITE DOTTED LINE (2" DASH 6" SKIP)
- 4" WHITE LINE
- 8" WHITE LINE
- 12" WHITE DIAGONAL LINE
- 24" WHITE LINE
- ARROW BOARD
- DRUMS OR TYPE II BARRICADES WITH MONO-DIRECTIONAL STEADY BURN LIGHTS IN MULTI-LANE OR ONE WAY SECTIONS AND BI-DIRECTIONAL STEADY BURN LIGHTS IN TWO LANE TWO WAY SECTIONS, SPACED AT 50' C-C IN TANGENT SECTIONS AND 20' C-C IN TAPER SECTIONS AND CORNER RADII PER THE HIGHWAY STANDARDS.
- TRAFFIC DIRECTION
- IMPACT ATTENUATOR, TEMP. (FULLY REDIRECTIVE, NARROW) TEST LEVEL 2
- TYPE III BARRICADE
- REMOVE EXISTING CURB AND GUTTER AND MEDIAN SURFACE. PAVE WITH TEMPORARY PAVEMENT (10" HMA) ON A 4" AGGREGATE BASE COURSE.

W20-1103(0)-48	W1-3L(0)-48	W21-1A(0)-48	W1-3R(0)-48	M6-4(0)-2115	R2-1-3648	R10-190P-3618
W3-2(0)-48	W6-3-48	W20-5R(0)-48	W20-5L(0)-48	W4-1R(0)-48	G20-1103(0)-3660	R1-1
		* - "WORKERS" SIGN TO BE DISPLAYED ONLY WHEN WORKERS ARE PRESENT				
R5-1	R3					