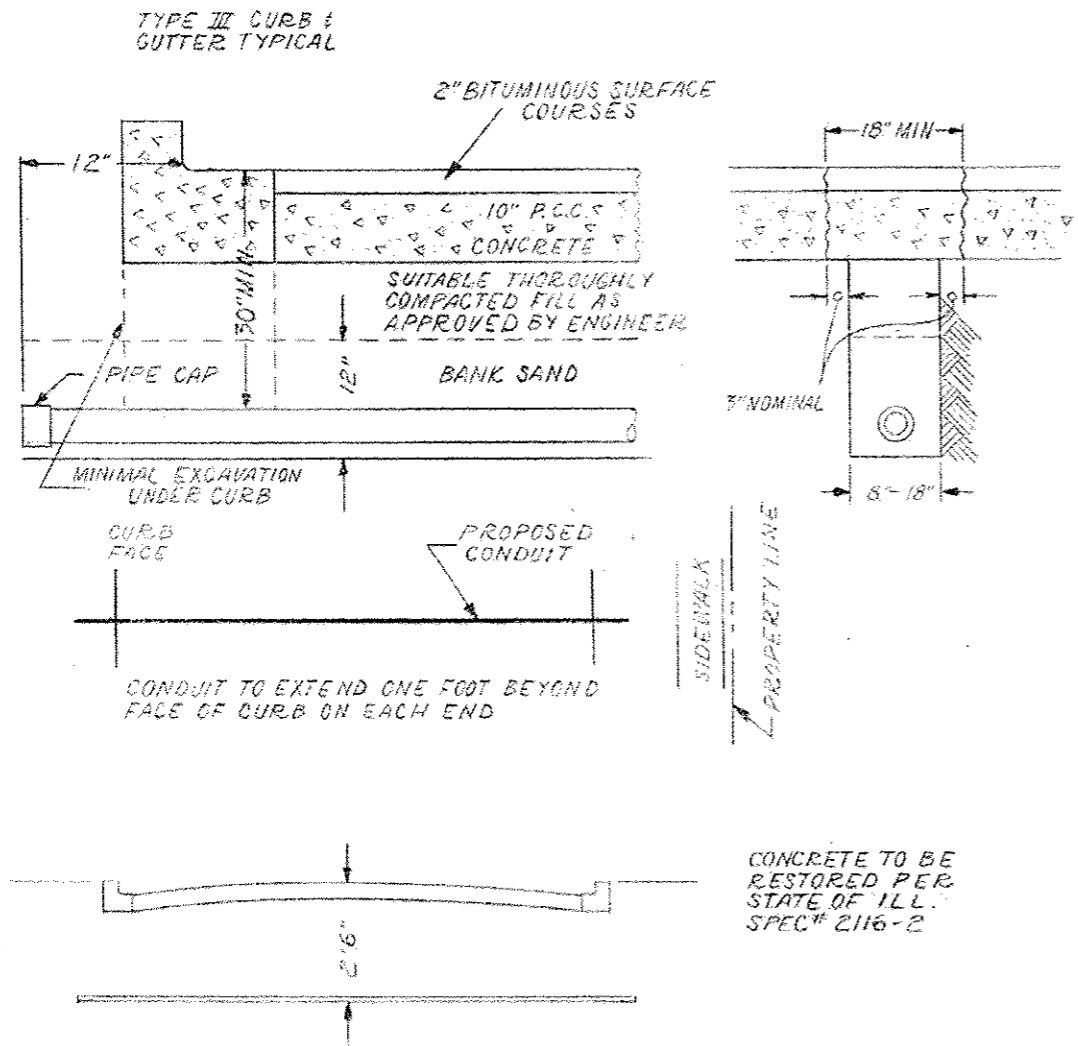
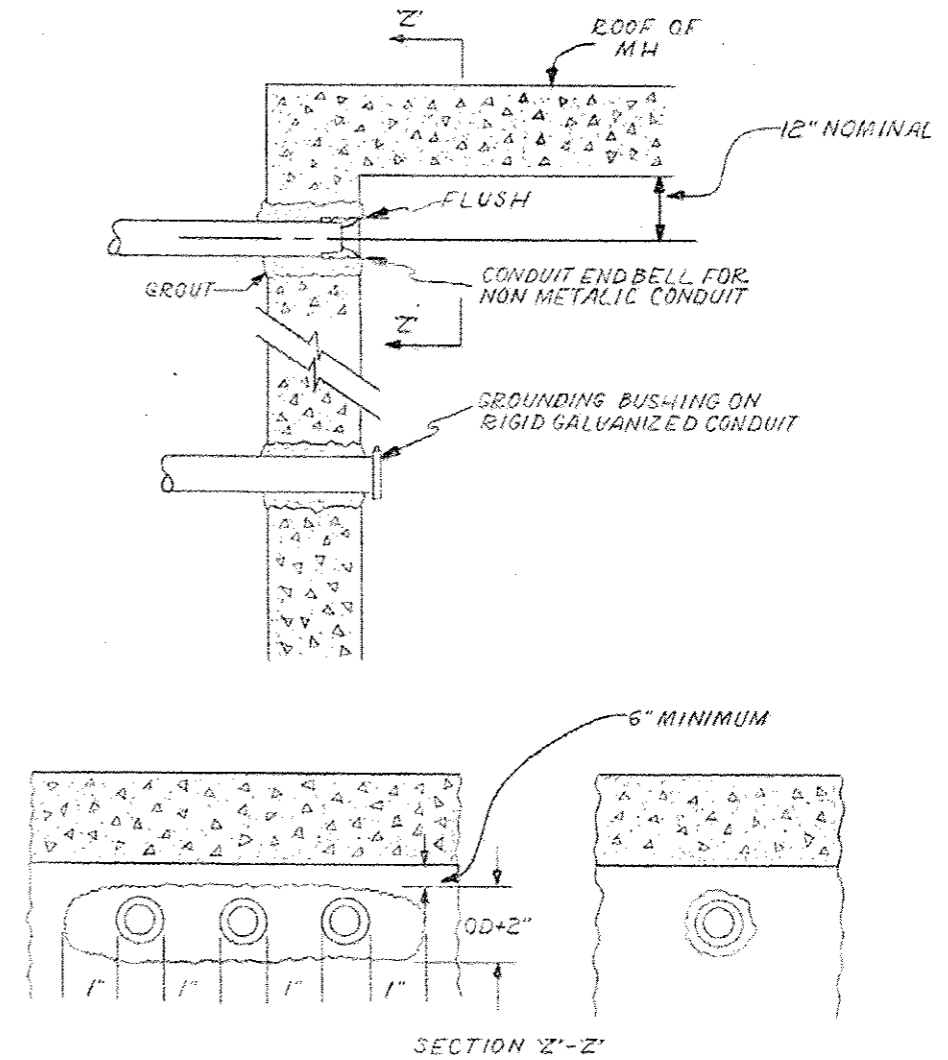


CONDUIT INSTALLATION UNDER PAVED STREET



INSTALLATION METHOD OF INSTALLING CONDUIT UNDER PAVED ROADWAY		
CITY OF CHICAGO DEPT. OF STREETS AND SANITATION BUREAU OF ELECTRICITY DIVISION OF ELECTRICAL ENGINEERING		
DRAWN A.M. JOHNSON	CHECKED R. SYCKOWSKI	ENGINEER E.L. MARTIN
 ENGINEER OF ELECTRICITY		DRG. NO. 813
 DEPUTY CHIEF		DATE 3-13-81
SIZE 8 1/2" X 14"	SCALE N.T.S.	

CONDUIT INSTALLATION THROUGH EXISTING
MANHOLE OR HANDHOLE WALL



INSTALLATION METHOD OF INSTALLING CONDUIT THRU MANHOLE WALL		
CITY OF CHICAGO DEPT. OF STREETS AND SANITATION BUREAU OF ELECTRICITY DIVISION OF ELECTRICAL ENGINEERING		
DRAWN A.M. JOHNSON	CHECKED R. SYCKOWSKI	ENGINEER E.L. MARTIN
 ENGINEER OF ELECTRICITY		DRG. NO. 814
 DEPUTY CHIEF		DATE 3-13-81
SIZE 8 1/2" X 14"	SCALE N.T.S.	

FILE NAME :	USER NAME : *USER*	DESIGNED -	KMM	REVISED -	
		DRAWN -	LV	REVISED -	
	PLOT SCALE : *SCALE*	CHECKED -	JDH	REVISED -	
	PLOT DATE : 5/15/2013	DATE -	02-22-2012	REVISED -	

STATE OF ILLINOIS
 DEPARTMENT OF TRANSPORTATION

63RD STREET OVER DAN RYAN EXPRESSWAY
 CDOT STANDARD DETAILS

F.A.I. RTE.	SECTION	COUNTY	TOTAL SHEETS	SHEET NO.
94	1920-B	COOK	137	36
CONTRACT NO. 60J15				
ILLINOIS FED. AID PROJECT				

SCALE: N.T.S. SHEET NO. OF SHEETS STA. TO STA.