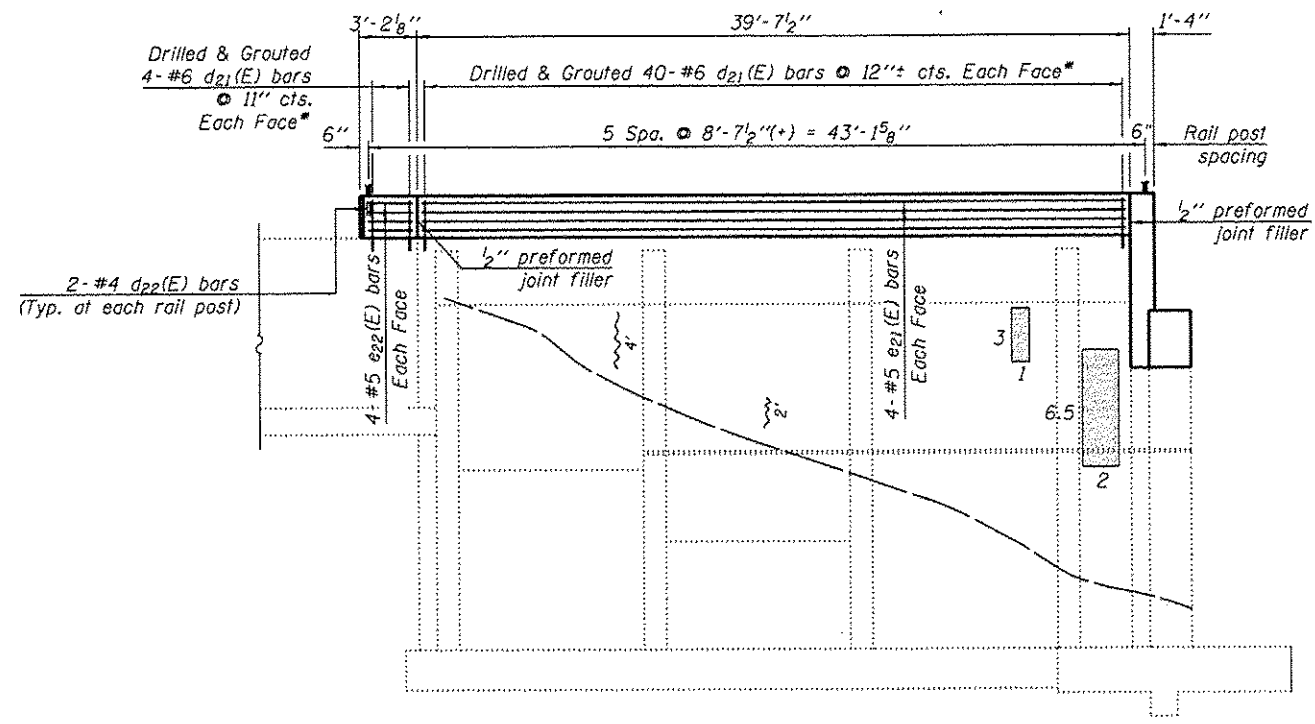
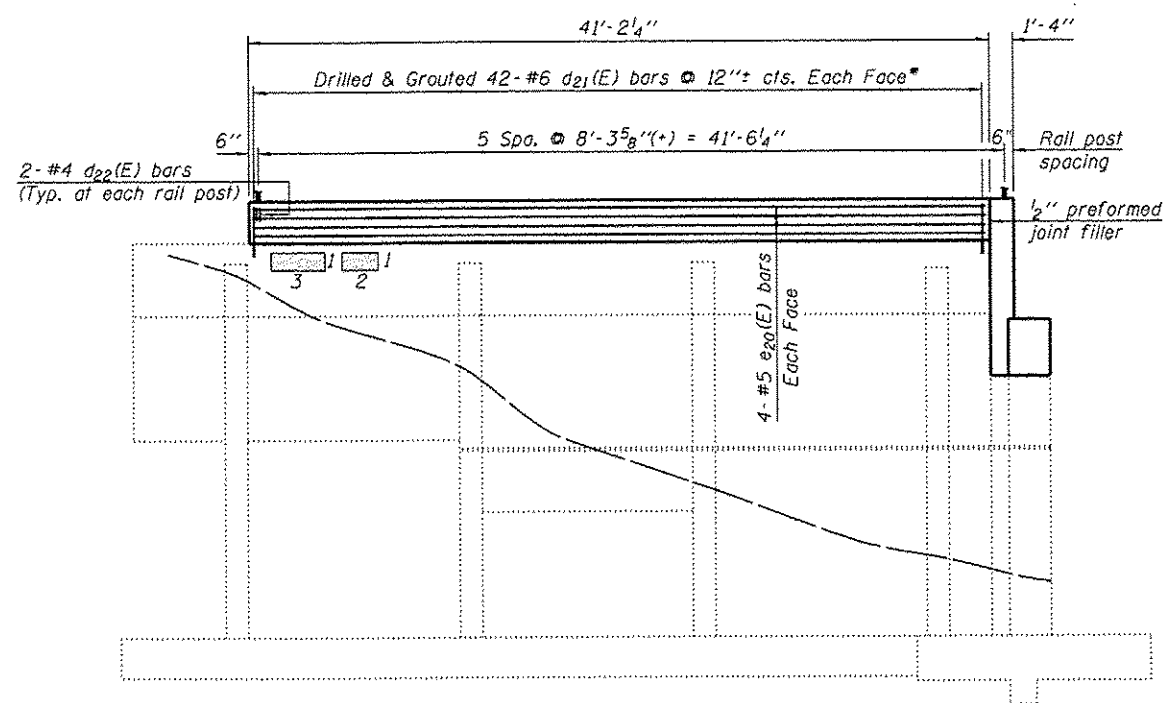


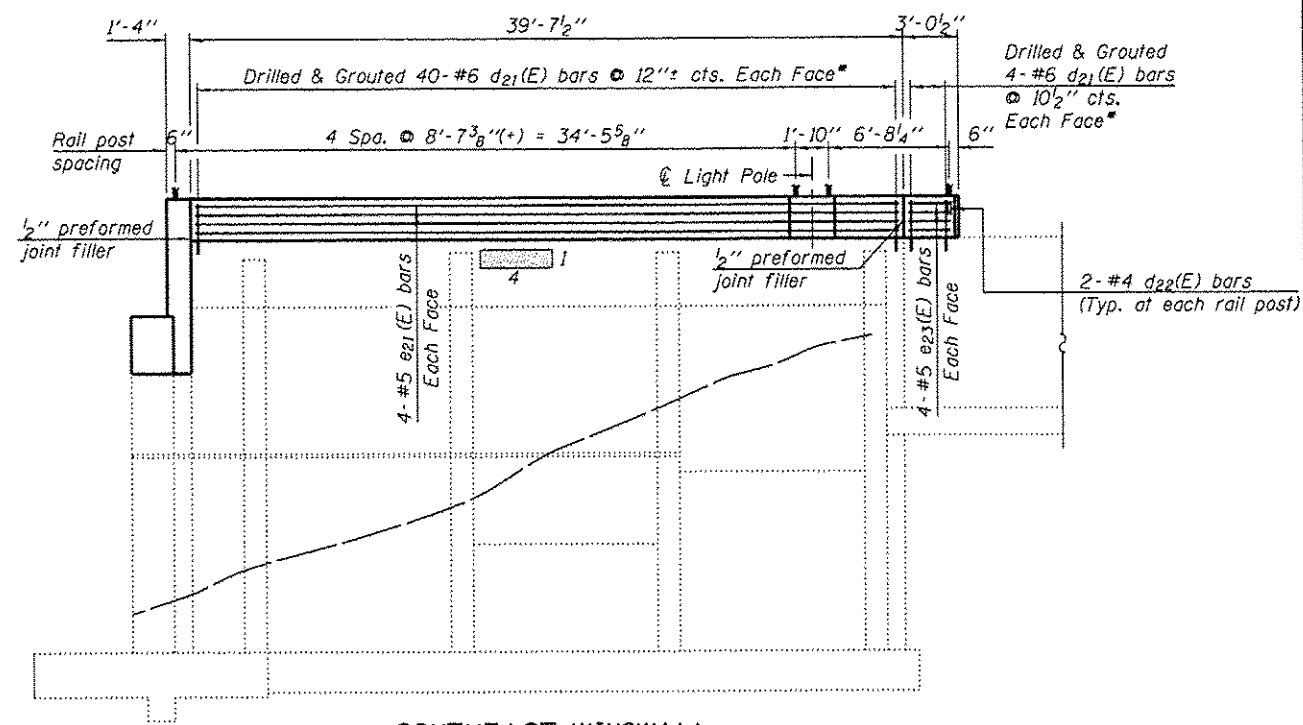
NORTHWEST WINGWALL ELEVATION



NORTHEAST WINGWALL ELEVATION



SOUTHWEST WINGWALL ELEVATION



SOUTHEAST WINGWALL ELEVATION

LEGEND

- Structural Repair of Concrete (Depth Equal to or Less than 5")
- Epoxy Crack Injection

NOTE

\*Epoxy grout d<sub>21</sub>(E) bars in 12" (min.) drilled holes according to Article 584 of the Standard Specifications.

R:\Jobs\2011\20110322\_CAD\Structural\dwg\016-1149\_Final\00\016015-s36-ww-rap2.dgn 5/20/2013 12:43 AM

**GRÖEF**  
8501 W. Higgins Road Suite 280  
Chicago, Illinois 60631 (773) 399-0112

USER NAME :	DESIGNED - J.Z.	REVISED -
PLOT SCALE :	CHECKED - J.A.Z.	REVISED -
PLOT DATE :	DRAWN - E.E.J.	REVISED -
	DATE - 5/17/2013	REVISED -

STATE OF ILLINOIS  
DEPARTMENT OF TRANSPORTATION

WINGWALL REMOVAL & REPAIRS II  
STRUCTURE NO. 016-1149

SHEET NO. S36 OF 50 SHEETS

F.A.I. RTE. 94	SECTION 1920-B	COUNTY COOK	TOTAL SHEETS 137	SHEET NO. 95
				CONTRACT NO. 60J15
ILLINOIS FED. AID PROJECT				