

LEGEND

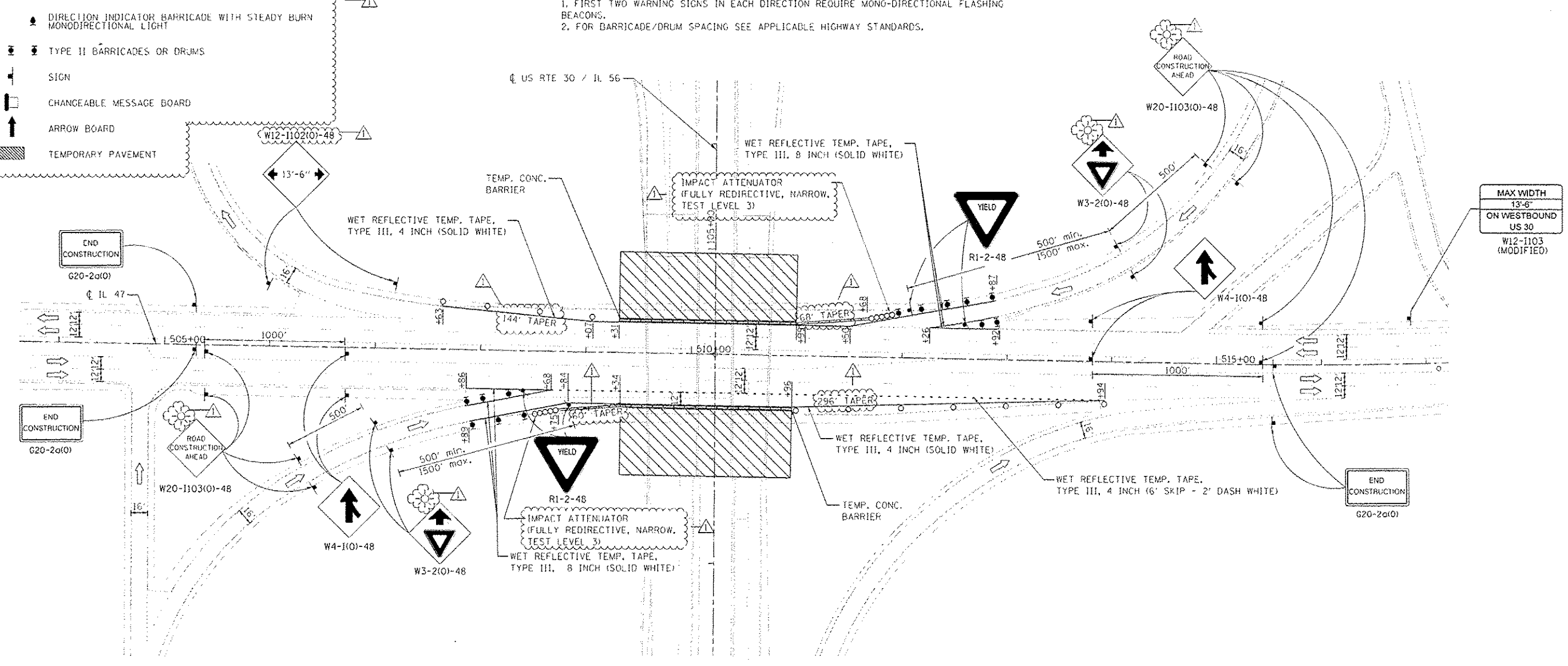
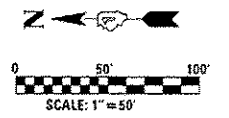
	WORK AREA
	IMPACT ATTENUATORS, TEMPORARY
	TEMPORARY CONCRETE BARRIER
	DRUM WITH STEADY BURN MONODIRECTIONAL LIGHT
	DIRECTION INDICATOR BARRICADE WITH STEADY BURN MONODIRECTIONAL LIGHT
	TYPE II BARRICADES OR DRUMS
	SIGN
	CHANGEABLE MESSAGE BOARD
	ARROW BOARD
	TEMPORARY PAVEMENT

STAGE I CONSTRUCTION:

1. REMOVE CONFLICTING EXISTING PAVEMENT MARKING LINES AND RAISED REFLECTIVE PAVEMENT MARKERS UNDER HIGHWAY STANDARDS 701426-04 AND 701411-08.
2. CLOSE OUTSIDE SHOULDERS OF IL 47 AS SHOWN IN THE PLANS AND IN ACCORDANCE WITH HIGHWAY STANDARD 701411-08.
3. PERFORM OUTSIDE LANE STRUCTURAL AND APPROACH REPAIRS AS SHOWN IN THE PLANS.

NOTES:

1. FIRST TWO WARNING SIGNS IN EACH DIRECTION REQUIRE MONO-DIRECTIONAL FLASHING BEACONS.
2. FOR BARRICADE/DRUM SPACING SEE APPLICABLE HIGHWAY STANDARDS.



USER NAME - #USER1	DESIGNED - SEW	REVISED - 1/ SL 6/30/2013
DRAWN - SEW	CHECKED - ST	REVISED -
PLT SCALE -	DATE - 11/2011	REVISED -
PLT DATE - 9/7/2013		

**STATE OF ILLINOIS
DEPARTMENT OF TRANSPORTATION**

**MAINTENANCE OF TRAFFIC - STAGE I - IL 47
US ROUTE 30 / IL 56 OVER IL 47**

SCALE: 1"=50' SHEET NO. 1 OF 1 SHEETS STA. 503+62 TO STA. 517+21

F.A.P. RTE. 573	SECTION 61 HR-1-7	COUNTY KANE	TOTAL SHEETS 48	SHEET NO. 11
CONTRACT NO. 60N12				
FED. ROAD DIST. NO. ILLINOIS FED. AID PROJECT				