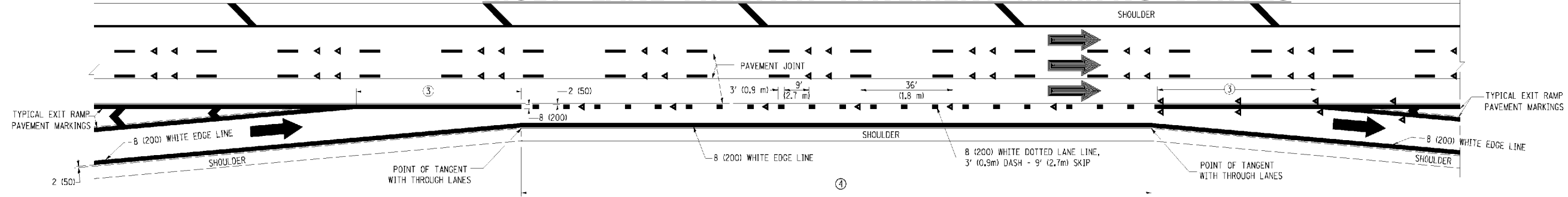
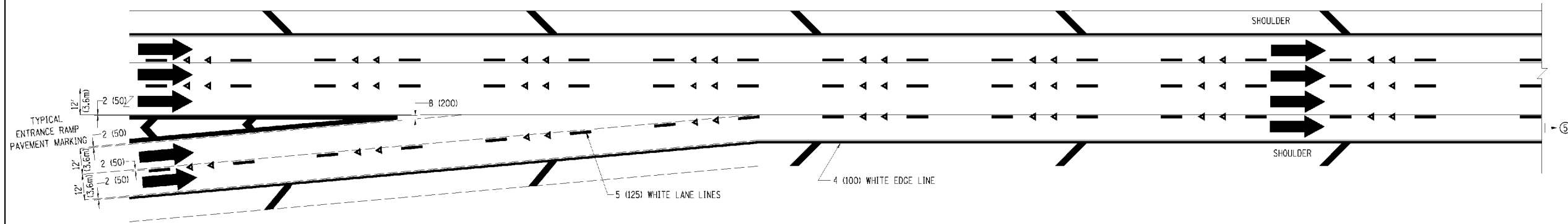


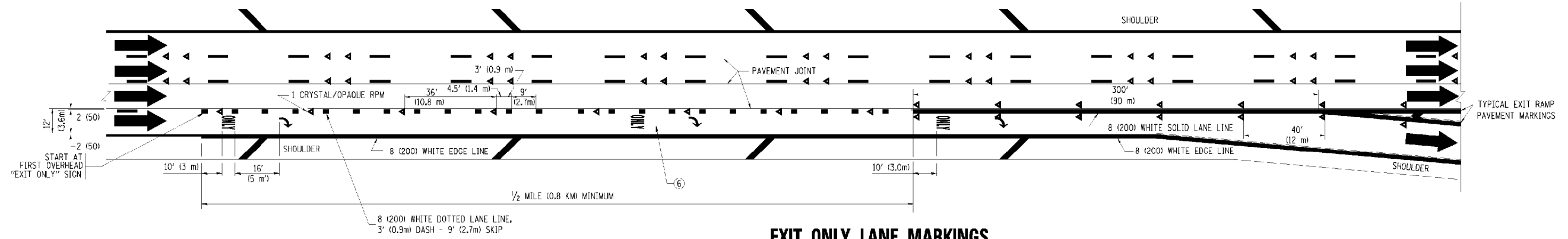
MULTI-LANE FREEWAY PAVEMENT MARKING DETAILS



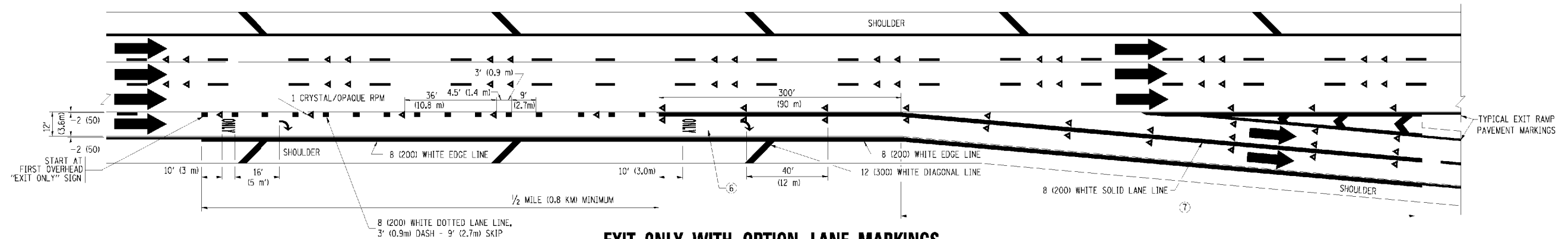
AUXILIARY LANE MARKINGS



TWO LANE ENTRANCE RAMP WITH MERGE MARKINGS



EXIT ONLY LANE MARKINGS



EXIT ONLY WITH OPTION LANE MARKINGS

- NOTES
- ③ OMIT WHEN LENGTH OF AUXILIARY LANE IS LESS THAN 500' (150 m).
 - ④ 8-INCH WIDE DOTTED LANE LINE MARKINGS SHALL BE USED WHEN THE LENGTH OF THE AUXILIARY LANE IS 2 MILES OR LESS.
 - ⑤ FOR TWO-LANE ENTRANCE RAMP, IF RIGHT LANE ENDS, USE TYPICAL ENTRANCE RAMP PAVEMENT MARKINGS.
 - ⑥ ONLY AND ARROWS EQUALLY SPACED, 500' (150 m) MAXIMUM SPACING. FULL SIZE LETTERS AND ARROW SHALL BE USED.
 - ⑦ CONTINUE 8" SOLID LANE LINE THROUGH EXIT TO END OF PAVED GORE.



USER NAME = *USER*	DESIGNED - SEW	REVISED -
PLOT SCALE = *SCALE*	DRAWN - SEW	REVISED -
PLOT DATE = *DATE*	CHECKED - ST	REVISED -
	DATE - 11/2011	REVISED -

STATE OF ILLINOIS
DEPARTMENT OF TRANSPORTATION

DISTRICT STANDARDS	
US ROUTE 30 / IL 56 OVER IL 47	
SCALE: N/A	SHEET NO. 5 OF 9 SHEETS
STA.	TO STA.

F.A.P. RTE.	SECTION	COUNTY	TOTAL SHEETS	SHEET NO.
573	61 HB-1-7	KANE	48	44
TC-12b		CONTRACT NO. 60N12		
FED. ROAD DIST. NO.	ILLINOIS	FED. AID PROJECT		