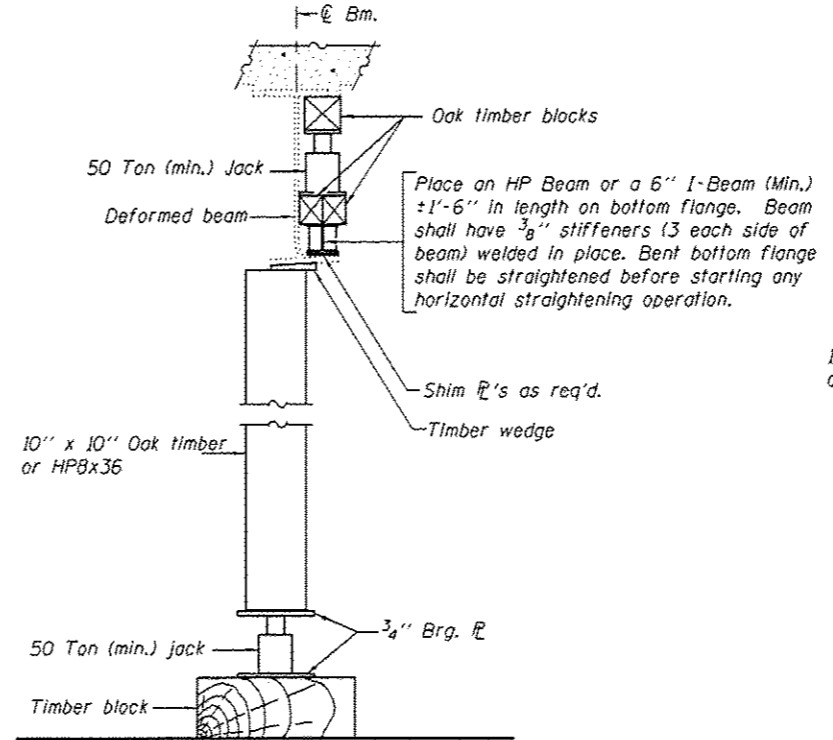
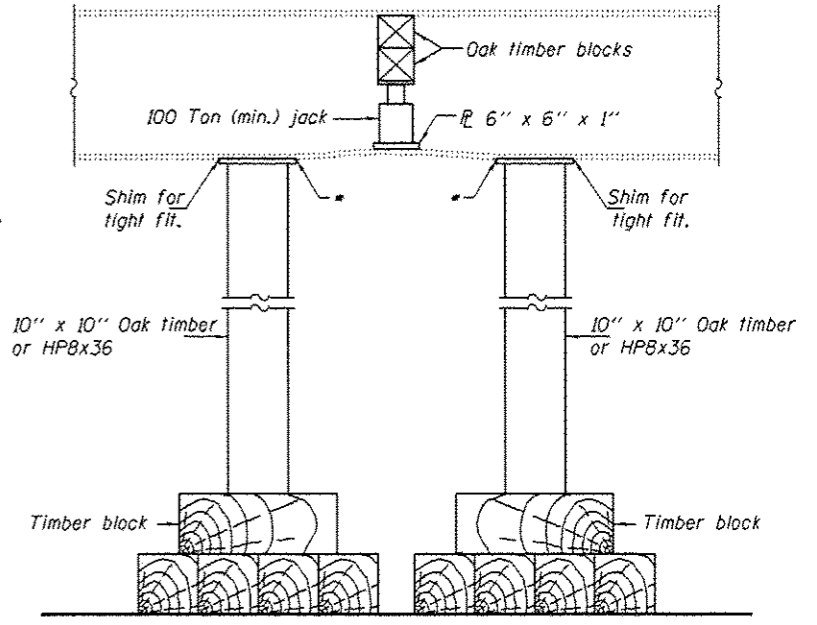


PARTIAL PLANS
SUGGESTED BEAM STRAIGHTENING METHODS
 Straightening force shall be maintained on all load transfer blocking during beam straightening.

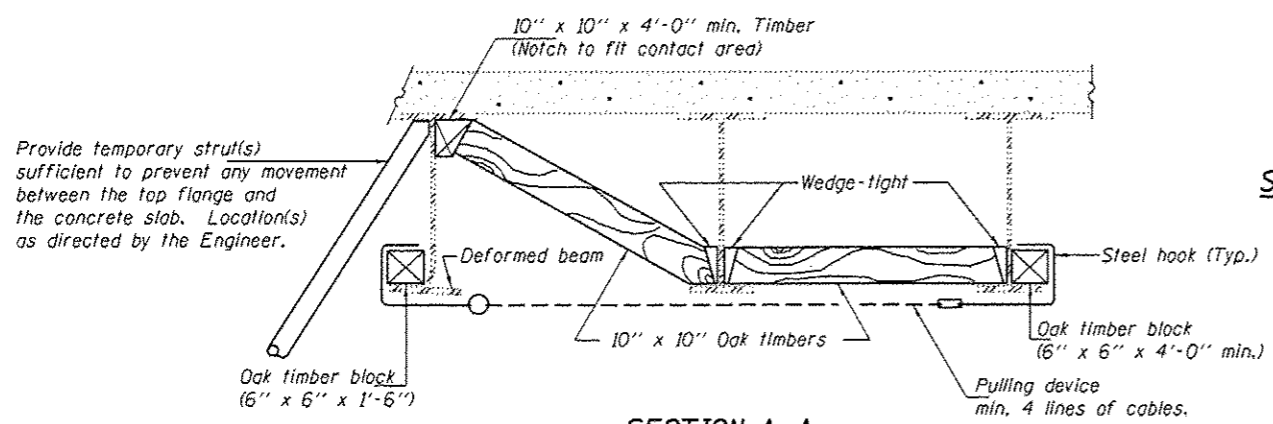


SUGGESTED VERTICAL STRAIGHTENING DETAIL
 (To correct flange rotation.)

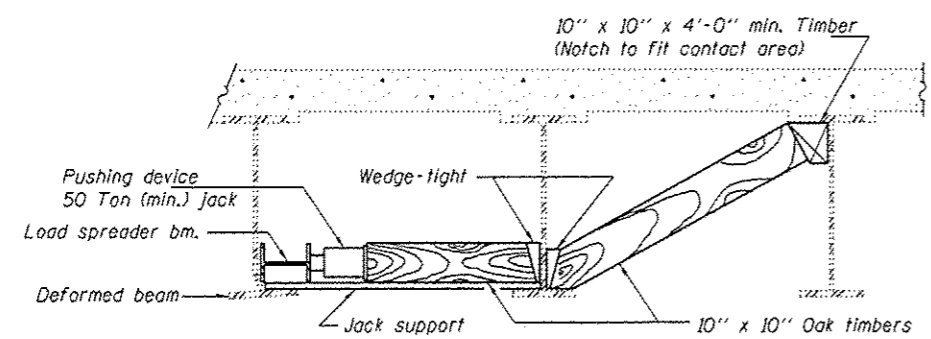


SUGGESTED VERTICAL STRAIGHTENING DETAIL
 (To correct localized vertical flange deformations.)

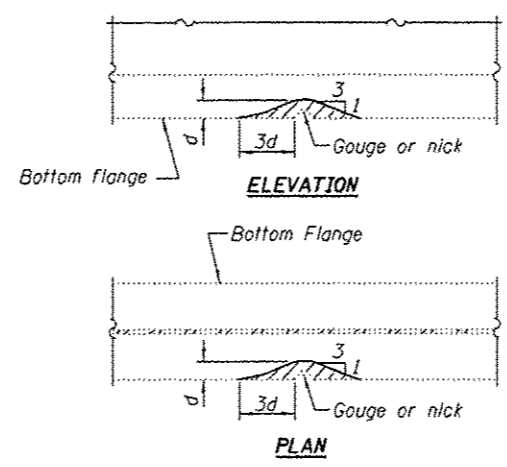
* Edge of plate shall line up with edge of deformation.
 Note:
 Braces and jack assembly shall be placed on same side of web.
 Bent bottom flange shall be straightened before starting any horizontal straightening operations.



SECTION A-A



SECTION B-B



GRINDING DETAIL

Grind existing nicks, gouges and shallow cracks in the damaged beams as detailed. Ground surfaces shall be inspected for cracks using magnetic particle testing prior to initiating any beam straightening operations. Any cracks that cannot be removed by grinding approximately 1/4" deep shall be identified and reported to the Bureau of Bridges and Structures for further disposition. Ground surfaces shall be spot cleaned and painted with an aluminum epoxy mastic primer followed by a finish coat to match the color of the existing beam. Cost of grinding, testing and spot painting included with Beam Straightening.

Beam	A	B	C
1	2 1/2"	1"	1'-9"
10 & 13	0"	1/2"	1'-6"

EXISTING DEFORMATION TO BE STRAIGHTENED

(Looking East at Beam 1 & West at Beams 10 & 13)
 (Approximate max. deflections)
 Deflected length of beam to be straightened is approximately "C".

REP-1 1-14-2005

DESIGNED GGE	EXAMINED	DATE
CHECKED TLC	<i>Timothy A. ...</i>	AUGUST 2, 2013
DRAWN baliva	ACTING ENGINEER OF STRUCTURAL SERVICES	
CHECKED GGE TLC	PASSED	REVISED
	ACTING ENGINEER OF BRIDGES AND STRUCTURES	REVISED

STATE OF ILLINOIS
 DEPARTMENT OF TRANSPORTATION

IMPACT REPAIR DETAILS
 SN 045-0035 (EB) & 0036 (WB)

SHEET NO. 15B OF 21 SHEETS

F.A.P. RTE.	SECTION	COUNTY	TOTAL SHEETS	SHEET NO.
573	61 HB-1-T	KANE	48	33B
CONTRACT NO. 60N12			ILLINOIS FED. AID PROJECT	