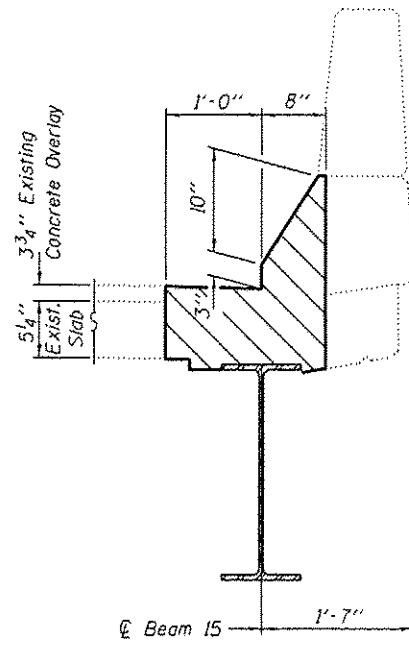
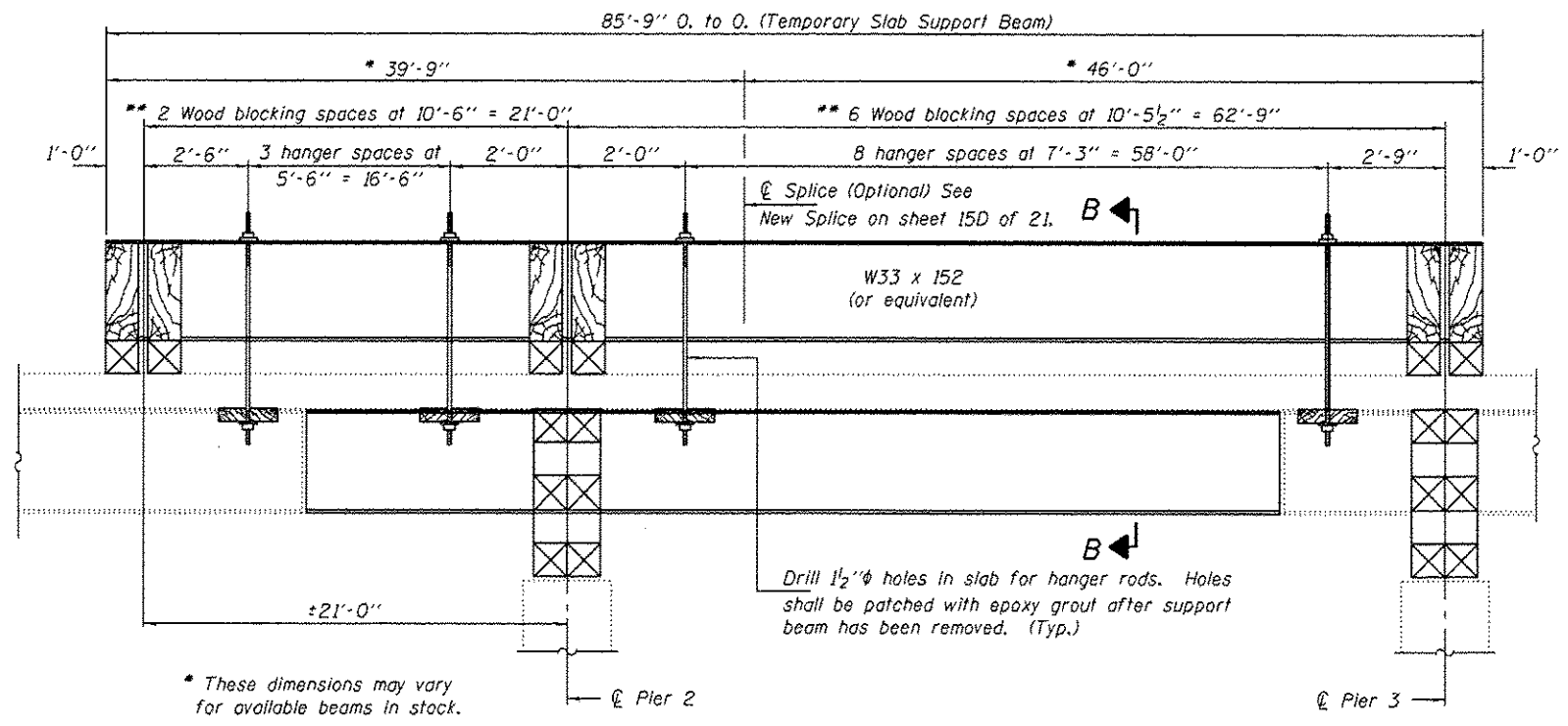


TYPICAL CONCRETE REMOVAL AND REPLACEMENT

Hatched areas indicate concrete sections to be removed and replaced. Perimeters of concrete removal areas shall be saw cut $\frac{3}{4}$ " prior to the removal of concrete.
 Reinforcement shall be cut only if required for fitting bolts. Cut reinforcement shall be spliced as directed by the Engineer. Cost included with Concrete Removal.
 Existing reinforcement extending into the removal area shall be cleaned, straightened and incorporated into the new construction. Any reinforcement bars that are damaged during concrete removal shall be replaced with an approved bar splicer or anchorage system. Cost included with Concrete Removal.

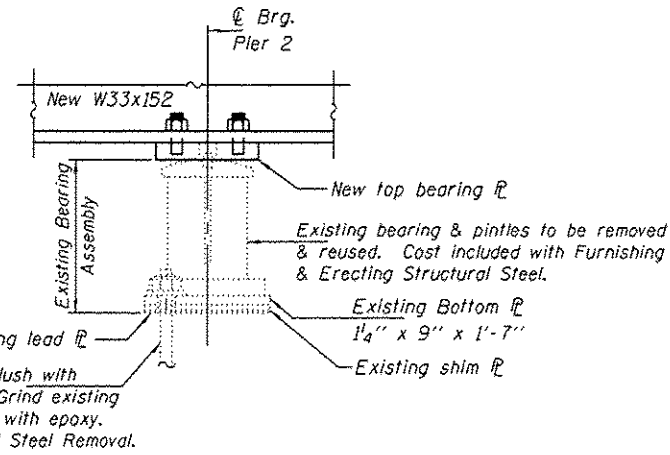


SECTION A-A



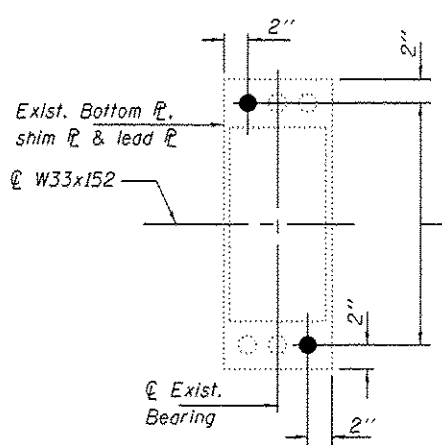
**LONGITUDINAL SECTION
SUGGESTED TEMPORARY SLAB SUPPORT SYSTEM**

** Wood blocking between supports to be placed after support beam deflects under its own weight.



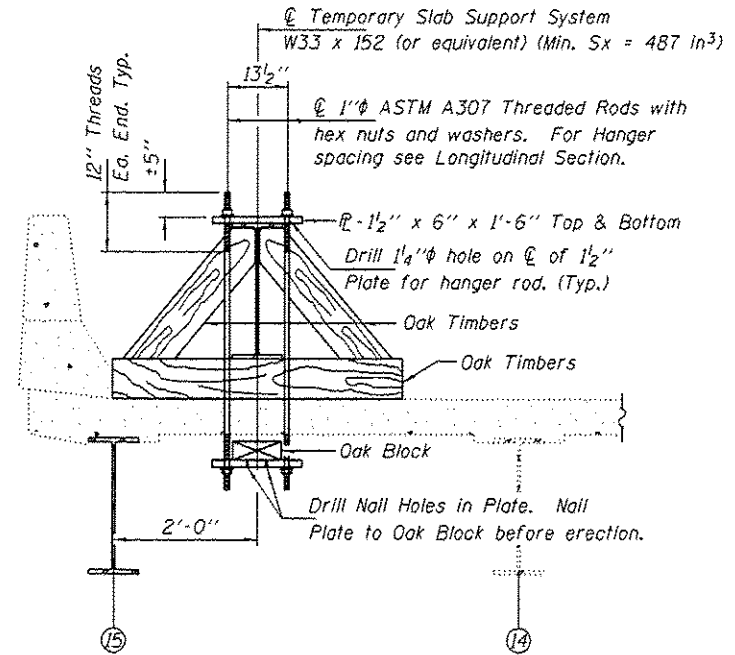
BEARING DETAILS

Burn existing anchor bolts flush with existing concrete surface. Grind existing anchor bolt smooth and seal with epoxy. Cost included with Structural Steel Removal.



ANCHOR BOLT LAYOUT

Notes:
 Anchor bolts shall be ASTM F1554 all-thread (or an Engineer-approved alternate material) of the grade(s) and diameter(s) specified. ASTM A307 Grade C anchor bolts may be used in lieu of ASTM F1554 Grade 36 (Fy=36ksi). The corresponding specified grade of AASHTO M314 anchor bolts may be used in lieu of ASTM F1554.
 Drilled and set anchor bolts shall be installed according to Article 521.06 of the Standard Specifications.



SECTION B-B

DESIGNED GGE	EXAMINED	DATE AUGUST 2, 2013	STATE OF ILLINOIS DEPARTMENT OF TRANSPORTATION		IMPACT REPAIR DETAILS SN 045-0035 (EB) & 0036 (WB)		F.A.P. RTE. 573	SECTION 61 HB-1-7	COUNTY KANE	TOTAL SHEETS 48	SHEET NO. 33C
CHECKED TLC	PASSED		TIMOTHY A. DALY ACTING ENGINEER OF STRUCTURAL SERVICES		SHEET NO. 15C OF 21 SHEETS		CONTRACT NO. 60N12		ILLINOIS FED. AID PROJECT		
DRAWN baliva			CARL J. JAMES ACTING ENGINEER OF BRIDGES AND STRUCTURES								
CHECKED GGE TLC											